

MEMORANDUM

7/18/67
THE WHITE HOUSE

WASHINGTON

8/2
July 18, 1967

MEMORANDUM FOR MR. ROSTOW

In regard to the article in the New York Times this morning stating that statistics indicate the burden of fighting has passed ~~in~~ decisively to the Americans, I have assembled the following charts:

1. US and GVN Force Strength
2. US and GVN KIA
3. US and GVN KIA per Corps Area
4. Ratio of GVN KIA/MIA/Cap to US KIA
per 1,000 OB
5. GVN KIA/MIA/Cap and US KIA
per 1,000 OB

The figures used in the Times article are essentially correct, i.e., there have been more US casualties in May and June than GVN, so I don't think we can argue statistical data with them -- the only thing we can do is try to find fault with the conclusions.

The following facts stand out to me:

1. On a per 1,000 OB basis, they could have written the same article at this time last year, i.e., proportionately there were more US casualties than GVN casualties during the same period.
2. GVN casualties have remained rather stationary, as has their force strength, while US casualties have increased in about the same line as the US force strength.

COPY LBJ LIBRARY

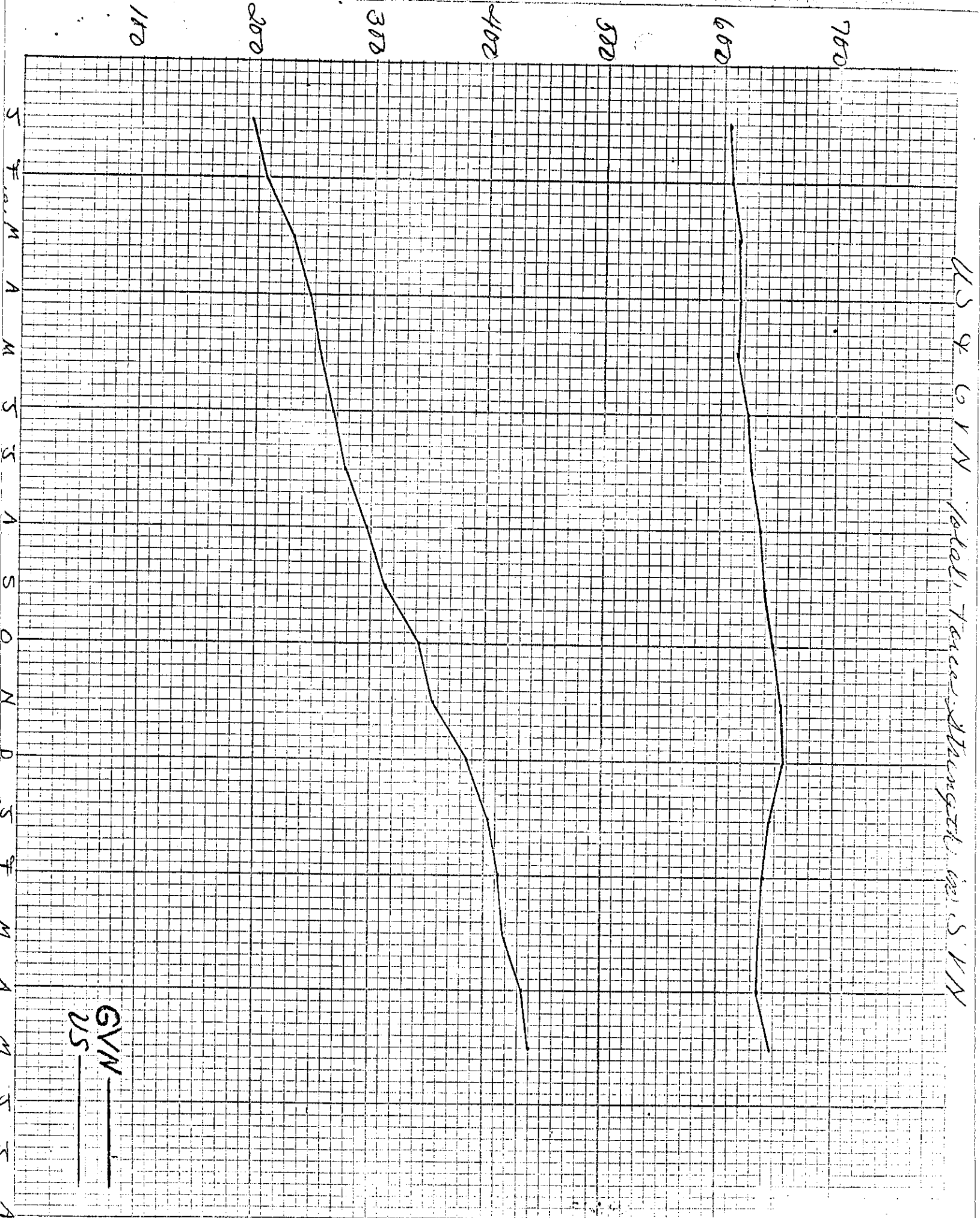
3. In May and June, almost 50 percent of the US casualties were suffered in the First Corps area, reflecting the heavy fighting between US and North Vietnamese forces along the DMZ.

4. Another factor that enters into this would be the increased movement of ARVN forces into the pacification program -- now involving 55 of the 154 RVNAF battalions (some 22 of these are in the First Corps). This GVN effort is still an unknown quantity since they have admittedly not yet gotten off the ground in the pacification work. How this will go in the future will be hard to foretell, but it is possible that with the VC emphasis on RD teams ^{and} in the pacification effort, the GVN forces involved will start taking a large share of the action, especially if the enemy Main Forces resist combat for any extensive period.

I am not sure this effort of mine will help you, but I think it does show some interesting facts and, as was said this morning, you can take any statistics for any particular period and write the story you want. But, as our statistics show, you must look at it over a long-range period and not just for one month or two months. If I had been projecting statistics on the basis of figures of last May and June, I think I may have written the same story. But, as the remainder of the year demonstrated, it would not have been true.


Art McCafferty

US 9 6 1 N Total Tarea through in US 1 N



GVN
US

Hand-drawn graph on grid paper showing two data series: 'GUN' and 'US'. The Y-axis is labeled from 200 to 1,200. The 'GUN' series is represented by a jagged line with peaks around 1,000 and 1,100. The 'US' series is represented by a jagged line with peaks around 400 and 500.

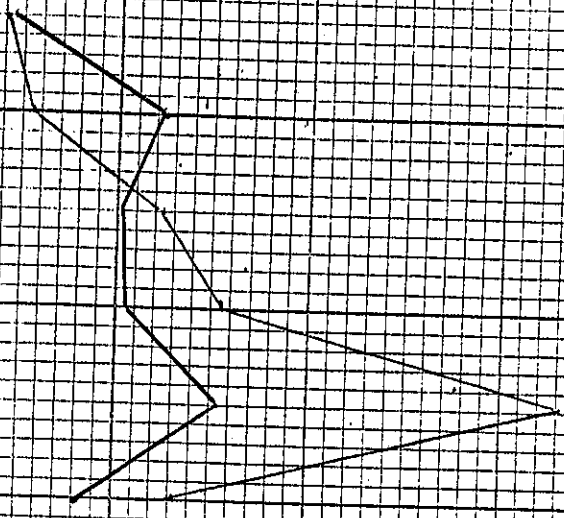
Series	Point 1	Point 2	Point 3	Point 4	Point 5	Point 6	Point 7	Point 8	Point 9	Point 10	Point 11	Point 12	Point 13	Point 14	Point 15	Point 16	Point 17	Point 18	Point 19	Point 20
GUN	1,000	1,100	1,050	1,000	1,050	1,100	1,050	1,000	1,050	1,100	1,050	1,000	1,050	1,100	1,050	1,000	1,050	1,100	1,050	1,000
US	400	500	450	400	450	500	450	400	450	500	450	400	450	500	450	400	450	500	450	400

57

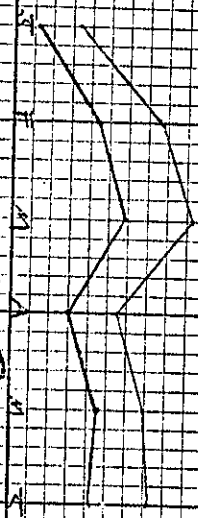
U.S. & CAN. RAILWAY CORP. ANNUAL (1967)

I Corps

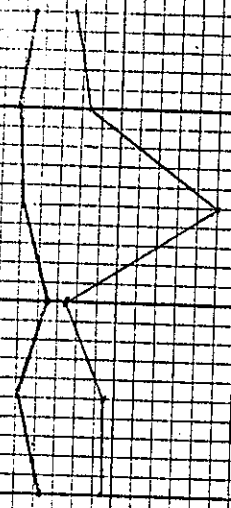
II Corps



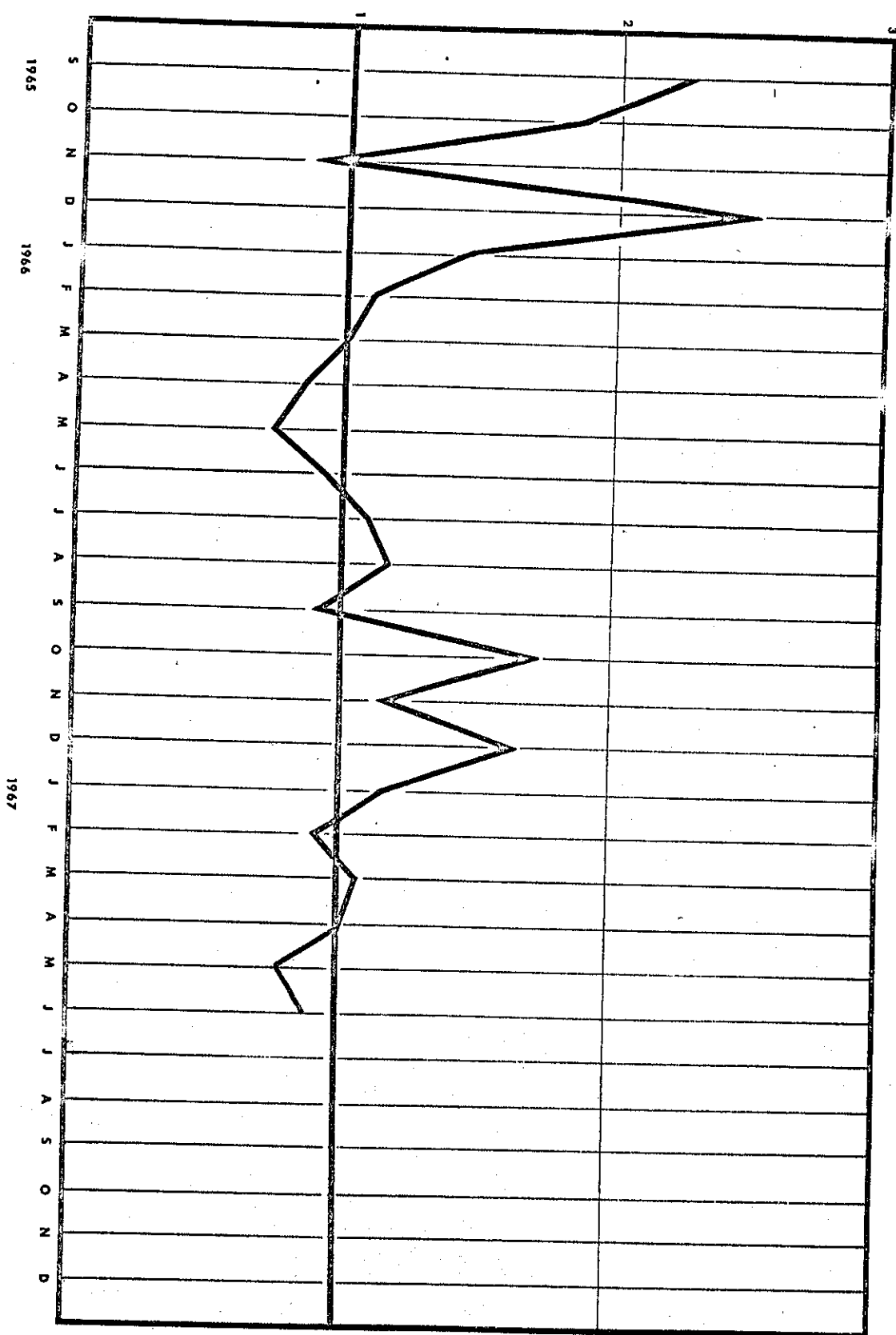
III Corps



IV Corps



Ratio GVN KIA/MIA/Cap to US KIA Per 1,000 OB



GVN KIA/MIA/Gap and US KIA Per 1,000 OB

