

STATIONS

DAU TIENG (translation in Vietnamese WELL KNOWN TREE)

CAMP RAINIER was named after Mt. Rainier in Washington State

Coordinates: XT491472

TRI TAM DISTRICT (pronounced TREE TOM) Population: 22,946

BINH DUONG PROVINCE (pronounced BIN ZONG) Population: 250,422

The Viet Cong referred to this province as THU DAU MOT or MILITARY REGION 1 (MR-1)

26 APRIL 1967 - 9 MARCH 1968

AREA OF OPERATION, WESTERN III CORPS / CAMBODIAN BORDER



269th (COMBAT) AVIATION BATTALION

ARRIVED VIETNAM: 28 JANUARY 1967

DEPARTED VIETNAM: 15 APRIL 1971

PREVIOUS STATION: FORT BRAGG

The 269th Aviation Battalion ("THE BLACK BARONS") was part of the 12th Aviation Group during its service in Vietnam and was located at CuChi. It reinforced the aviation assets of the 25th Infantry Division, 9th Infantry Division, 1st Infantry Division and other units in Western III CTZ.

21st AVIATION COMPANY Reconnaissance



116th Assault Hel. Co.



187th Assault Hel. Co.



188th Assault Hel. Co.



242nd Assault Support Hel. Co.

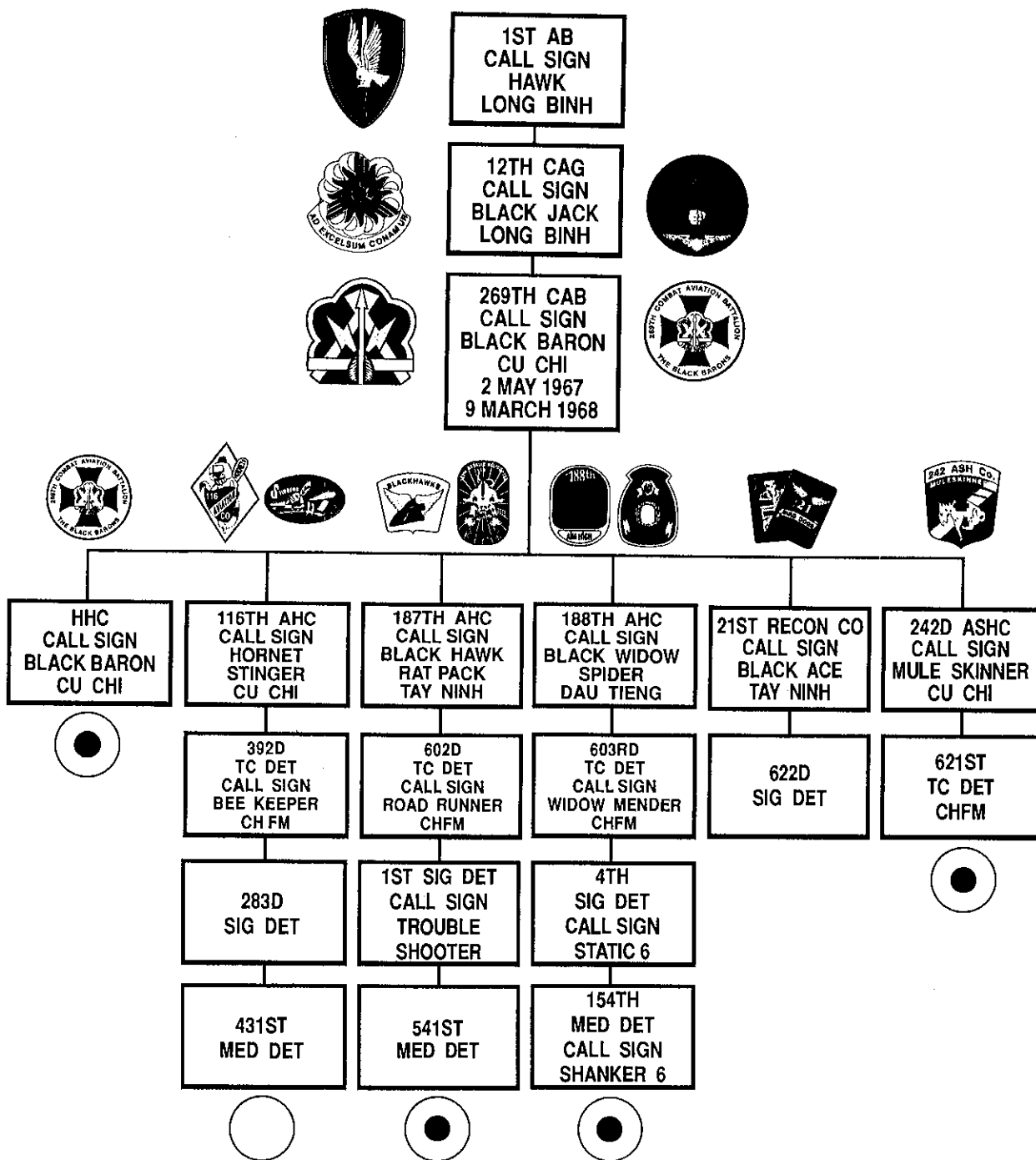


361st Assault Hel. Co. (Cobras)



Source: Vietnam Order of Battle by Shelby L. Stanton, U.S. News Books, Washington, D.C.

ORGANIZATIONAL CHAIN OF COMMAND



● The 269th CAB aircraft markings consisted of a white circle and each company was assigned a distinctive color bullseye for visual identification.

LISTEN UP

1ST AB - 1st AVIATION BRIGADE, LARGEST ARMY COMBAT COMMAND IN VIETNAM.

AHC - ASSAULT HELICOPTER COMPANY

ASHC - ASSAULT SUPPORT HELICOPTER COMPANY

CAB - COMBAT AVIATION BATTALION, III CORPS

CAG - COMBAT AVIATION GROUP

CHFM - CARGO HELICOPTER FIELD MAINTENANCE

HHC - HEADQUARTERS AND HEADQUARTERS COMPANY

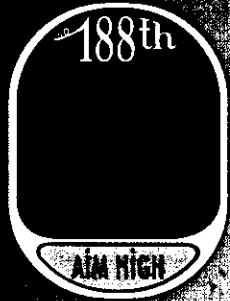
MED DET - MEDICAL DETACHMENT

SIG DET - SIGNAL DETACHMENT

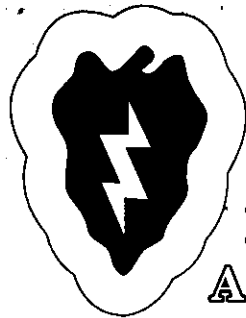
TC DET - TRANSPORTATION COMPANY DETACHMENT

RECON CO - FIXED WING, BIRD DOG RECONNAISSANCE AND SURVEILLANCE COMPANY

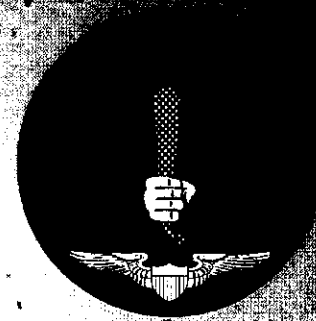
SOURCE: 269th CAB Quarterly Reports, Operational Report Lessons Learned (ORLL) 1967 - 1968

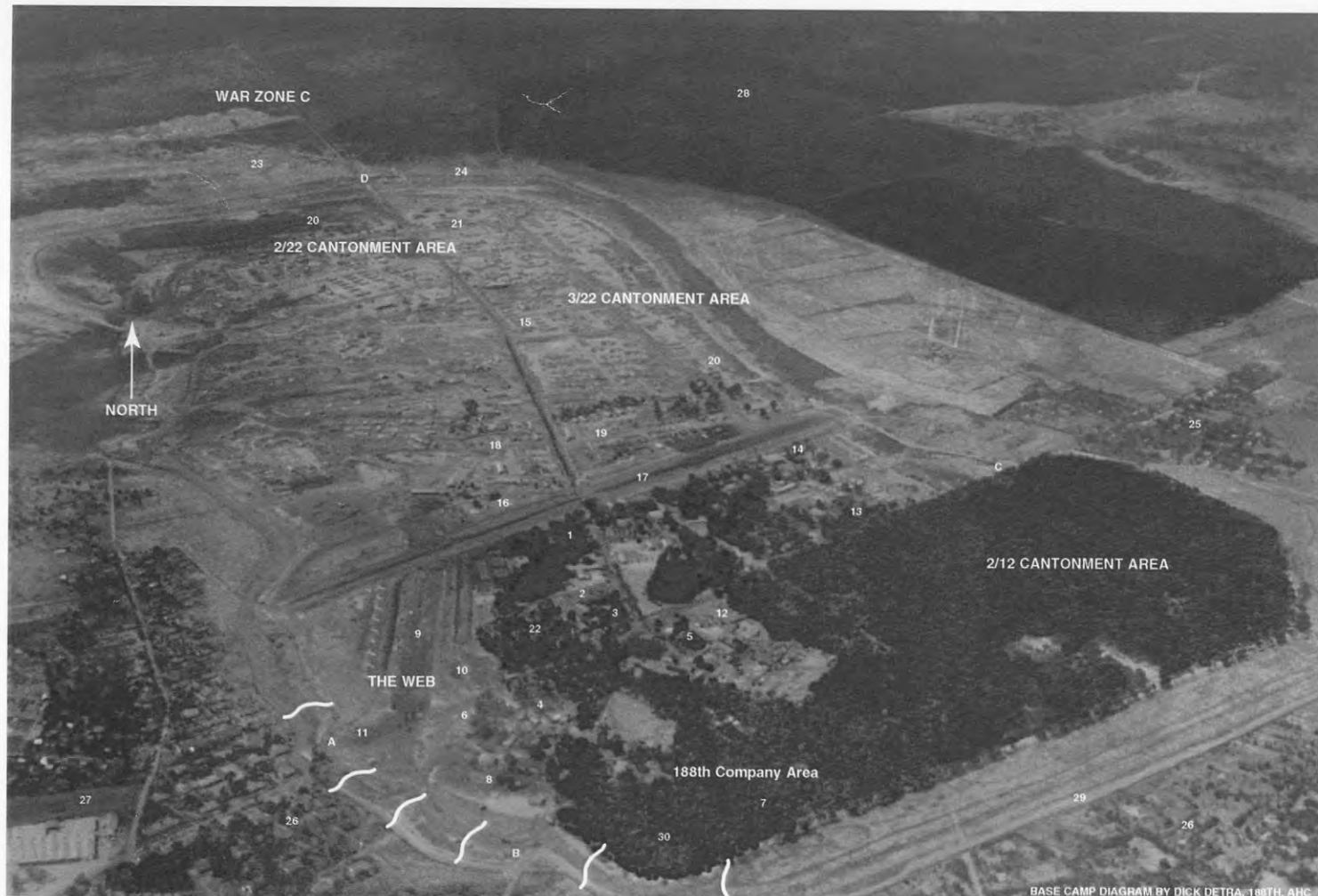


CU CHI



READY TO STRIKE...
ANY WHERE ANY TIME





"Camp Rainier"

Dau Tieng, South Vietnam 1967-1968

Home of the 3rd Brigade, 4th Infantry Division, The Funky Fourth,
until August 1, 1967 when it was redesignated as the
3rd Brigade, 25th Infantry Division, The Electric Strawberry.

POINTS OF INTEREST

- A Southwest Main Gate
- B Gate for the indigenous Vietnamese workers from Dau Tieng
- C Southeast Main Gate
- D North Main Gate
- ✓ Viet Cong tunnels being dug into the base camp. These tunnels were used later in the conflict to gain access to the interior of the camp.
- 1. 3rd Brigade Headquarters (HQ) and Tactical Operations Center (TOC)
- 2. Michelin Villa with swimming pool (used by French managers when they flew up from Saigon)
- 3. Officers swimming pool
- 4. 2/12 "White Warriors" HQ and TOC
- 5. Main swimming pool and snack bar
- 6. 3rd Brigade Hospital, D Company 25th Medical Battalion
- 7. 188th Assault Helicopter Company "Black Widows" HQ and TOC
- 8. 188th Motor Pool
- 9. 188th helicopter revetment area also known as "THE WEB"- JP4, Pol and ammo rearm point
- 10. 188th, 603d and 4th Signal Detachment maintenance area
- 11. 25th Aviation hanger, OH21 and OH23
- 12. PX and Chapel
- 13. 3/22 "Regulars" HQ and TOC
- 14. 1/27 Artillery HQ and TOC (155mm Howitzer), 44th Scout Dog Platoon
- 15. 2/22 "Triple Deuce" HQ and TOC
- 16. Air traffic control-tower, counter mortar standby and the 19th Tactical Air Support Squadron (OV-10) "Bronco's"
- 17. Main Runway 26, C-130, C-123 and C7A fixed wing only

- 18. 25th Supply and Transport
- 19. 2/77 Artillery HQ and TOC, 155mm Howitzer, direct support
- 20. Division artillery, 175mm and 8" Howitzer
- 21. C Battery 1/27 Field Artillery, 155mm Howitzer
- 22. 3rd Platoon, 25th MP Company
- 23. Laterite pit and dump - the Vietnamese would fight over the garbage we dumped, pimps would sell happy smoke and whores, plus a favorite spot for V.C. snipers.
- 24. Small arms familiarization area
- 25. AP Non village, check point (off limits)
- 26. Dau Tieng village, located on the Saigon River, was off limits and controlled at night by the Viet Cong.
- 27. Michelin Latex factory for processing of rubber
- 28. Michelin Rubber Plantation, 32 Hamlets
- 29. Main Road around the base camp, during daylight hours you could buy happy smoke and whores all along this road.
- 30. 603d Transportation Detachment, 154th Medical Detachment and 4th Signal Detachment

LOCATION UNKNOWN

C Company 588th Engineers
Pacific Architects and Engineers (PA and E) - Korean civilians hired to maintain power and lights for the entire base camp.
Troop C 1st Squadron, 10th Cavalry
725th Maintenance
5/2 Artillery, 40mm Duster's and Quad 50's
7/11 Artillery, "On Time", 105mm Howitzer
Delta Company, 65th Engineers
587th Signal Battalion: Mars Station

LZ SALLY



Photo by: CW2 Curt Knapp, Aviation Section, HHC, 2nd Brigade, 101st Airborne Division (Airmobile) November 1968

Home of the 2nd Brigade, 101st Airborne Division "Screaming Eagles" (referred to as the Puking Buzzards) from March 1968 through March 1970 when it was handed over to the 1st ARVN Division. LZ Sally was named after the wife of a 1st Cavalry Company Commander. During the 188th's time at LZ Sally it was a tent city and a much smaller base camp. (Source LTG John H. Cushman, Commander, 2nd Brigade, 101st Airborne Division)

Points of Interest

- A. Southeast Main Gate
- B. North Gate: Backdoor
- C. PK17- 1st ARVN Division Compound
- D. Highway 1
- E. Song Bo River
- F. An Loi Bridge
- G. Saigon to Hanoi Railroad

- 1. 188th, 603rd, 154th Medical Detachment and 4th Signal Company Area
- 2. 603rd Maintenance Area
- 3. 188th Motor Pool
- 4. Helicopter Revetments
- 5. US Navy MCB4 SEABEE's
- 6. C Battery 2/11 Artillery (155mm)
- 7. Dirt Pit, Dump and Small arms target range
- 8. 101st Military Police Detachment
- 9. 2nd Brigade Headquarters, TOC and VIP Pad
- 10. Hdqts and Hdqts Company
- 11. 1st Battalion, 501st Infantry "First Strike"
- 12. 2nd Battalion, 501st Infantry "First Strike"
- 13. 1st Battalion, 502nd Infantry "Geronimo"
- 14. 1st Battalion, 321st Artillery
- 15. C Company, 326th Engineer Battalion
- 16. 47th Scout Dog Platoon
- 17. B Company, 326th Medical Detachment
- 18. 2nd Platoon, Company A, 801st Maintenance BN.
- 19. 501st Supply Company
- 20. 265th Radio Research Company
- 21. 34th Public Information Detachment
- 22. 7th Airforce Detachment
- 23. Access Road
- 24. POL
- 25. Brigade Aviation Section

LISTEN UP: (Available upon request, Black Widow guided tours to the following locations)

DANANG - 65 MILES SOUTH
KHE SAHN - 36 MILES NORTHWEST

DMZ - 32 MILES NORTH
A SHAU VALLEY - 23 MILES WEST