

The 5 photos and 3 maps were donated by Dick Detra who was a door gunner with the 2nd platoon "Slicks" and the gun platoon "Spiders" for the 188th Assault Helicopter Company "Black Widows" (1967-68). These aerial photos and maps of Vietnam are of Camp Ranier a 3rd Brigade 25th Infantry base camp also known as Sau Tieng. It was set up in the Michelin Rubber Plantation next to the airfield.

Dau Tieng 1967-1968

Company Area and Helicopter air strip

31 Hueys in the
company

DICK DETRA COLLECTION 2/6/97

23 SLICKS
8 GUN SHIPS



Looking Southeast directly at the 18th Assault Helicopter Company base camp "BLACK WINDOWS"

RAZOR BACK MTS

Highway 14

Swimming Pool

P.X

188th Company defensive perimeter

2/12 Infantry

"CAMP RANGER"

"DAO TIENG"

DAK DETRA COLLECTION 2/6/97

Dick Detra Collection 1967 DAN TIENG RUBBER PROCESSING PLANT
NUI BA DEN



notice the bridge is still intact. When the bridge was blown in 87 a pontoon bridge replaced it.

The Michelin Rubber Plantation remained operational through out the Vietnam Conflict.

"CAMP RANIER" original unit camp from Ft. Lewis, Wash.
named after Mt. Ranier 1966 -
(3rd Bn. 4th Inf. Division)



Aerial view looking North at Sau Trang Base Camp 1967-1968
Home of the 3rd Brigade 25th Infantry Division

Dick Debra Collection

Dich Dotra Photo collection 2/6/97

tunnels discovered around TET '68

RUBBER PROCESSING PLANT

SAGON RIVER

Air Strip

West gate

188th Company Area

BUNKER LINE

MINE FIELD

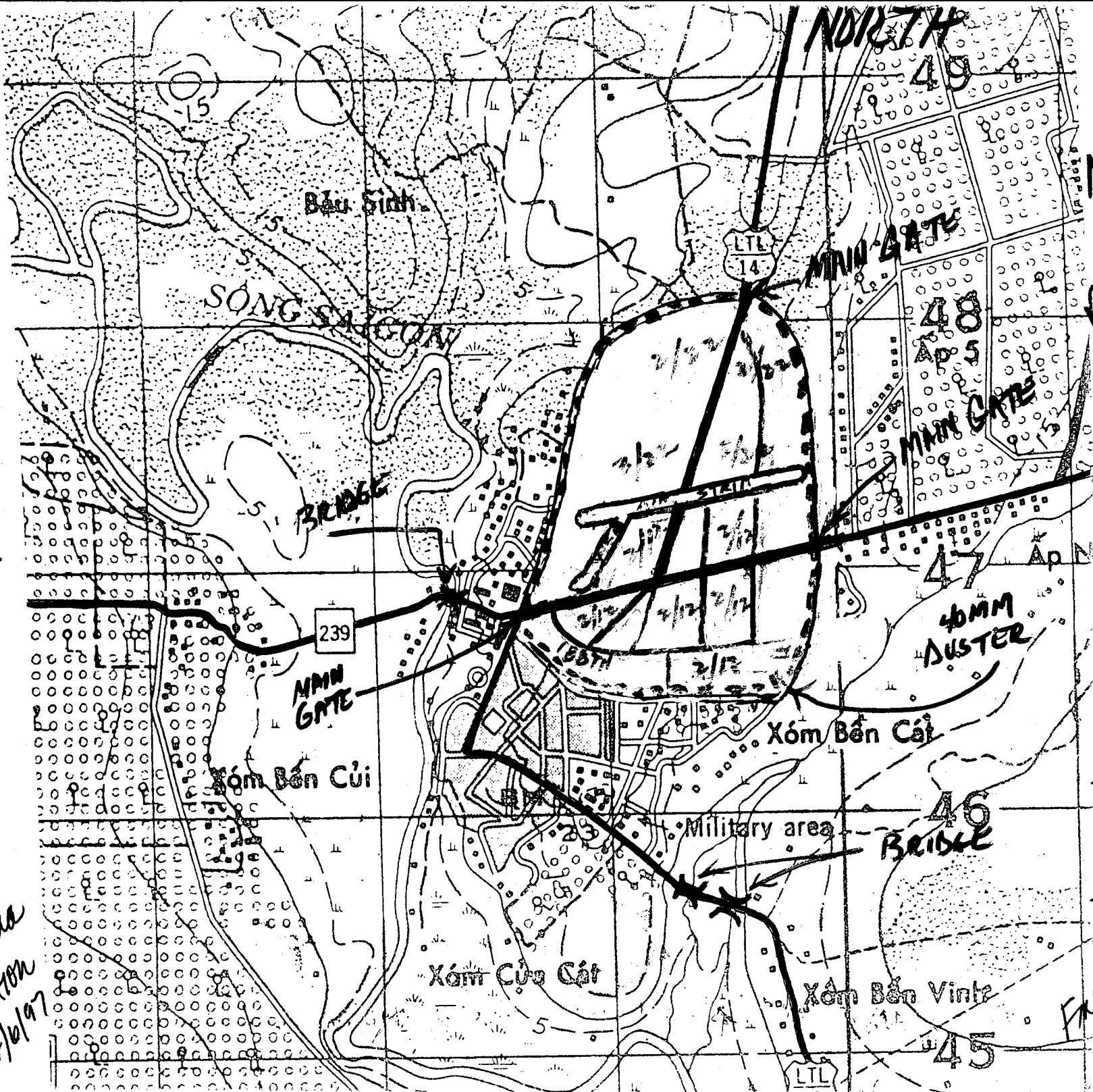
DAU TIENG

188th Assault Helicopter Company "BLACK WINDOWS" "CAMP RANIER"



CAMBODIA

WEST



MICHELIN RUBBER PLANTATION

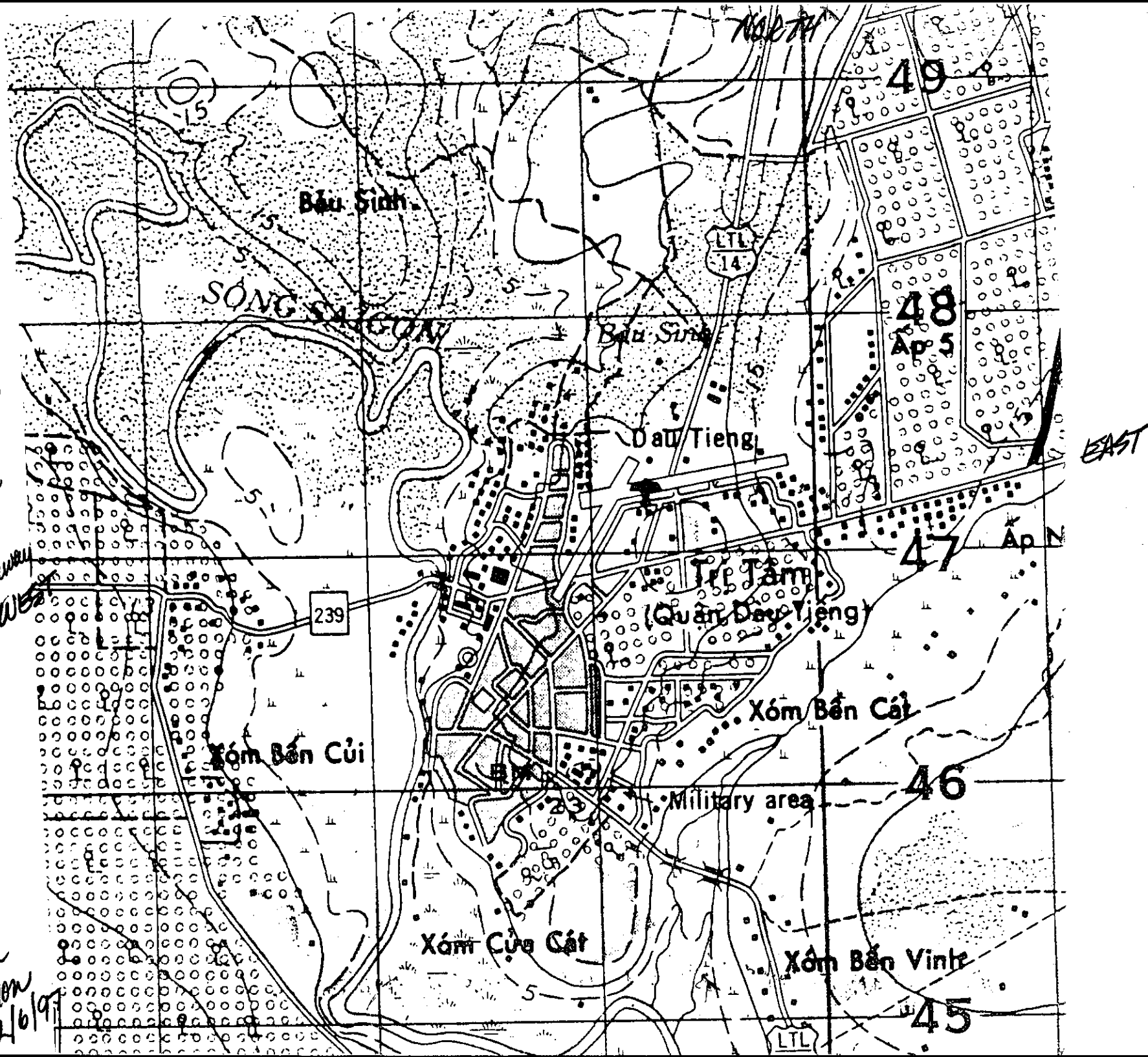
EAST

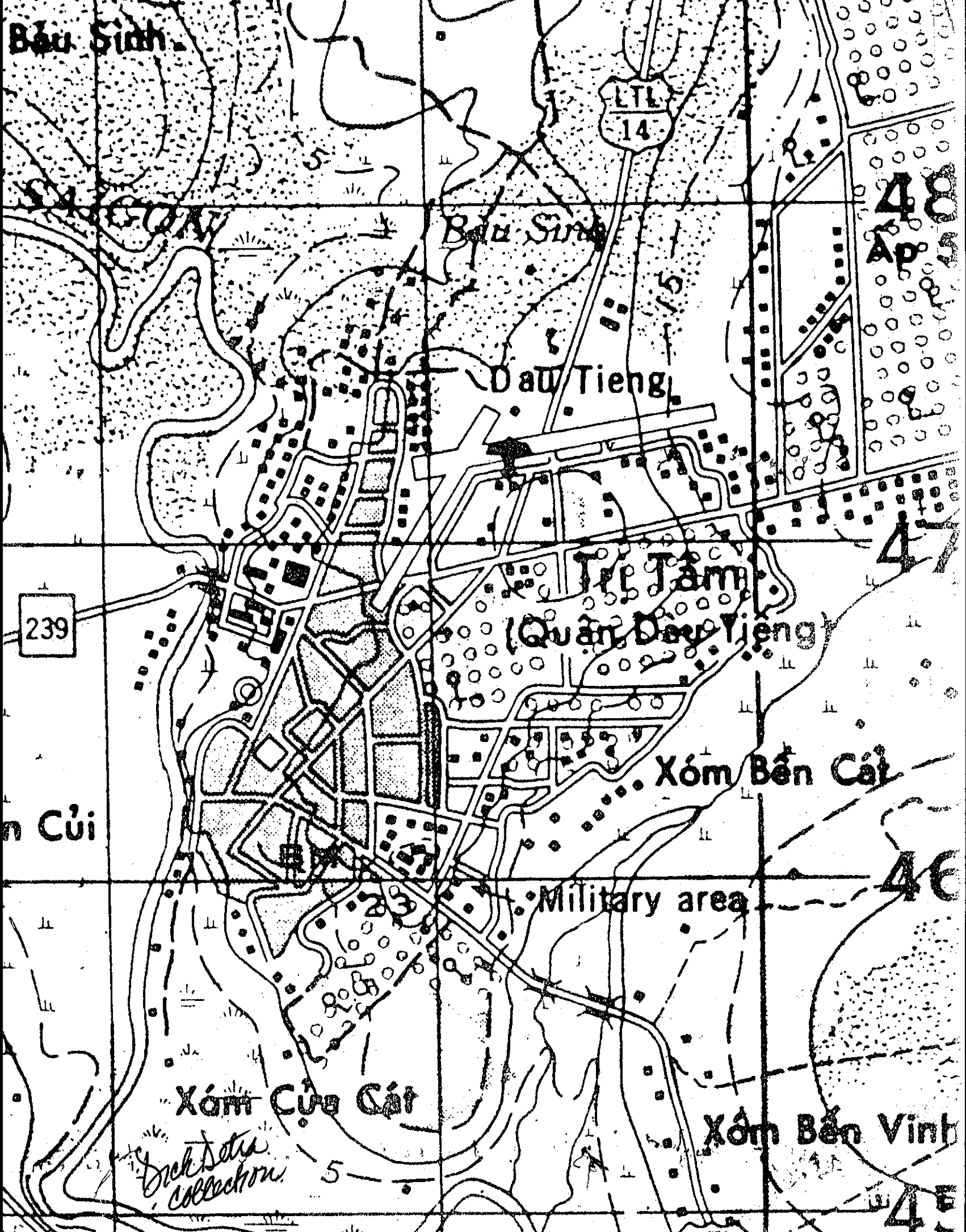
(1st DRAFT)
BASIC LAYOUT
OF BASE CAMP
I'M IN THE
PROCESS OF
FINISHING THIS
PROJECT.

Dick Seta
Collection
2/6/97

The base
camp at
Dau Tieng
had 3 main
gates - 2 on
Highway 239
EAST - WEST
and one on
the north
entrance Highway
14.

Dick Setra
Collection
2/6/97





Bầu Sình.

Bầu Sình

Dầu Tieng

Tĩ Tâm
(Quận Dầu Tieng)

Xóm Bến Cát

Military area

Xóm Củi Cát

Xóm Bến Vinh

*Dich Setu
collection*

ETL
14

239

n Củi

48
Ap 5

47

46

4E