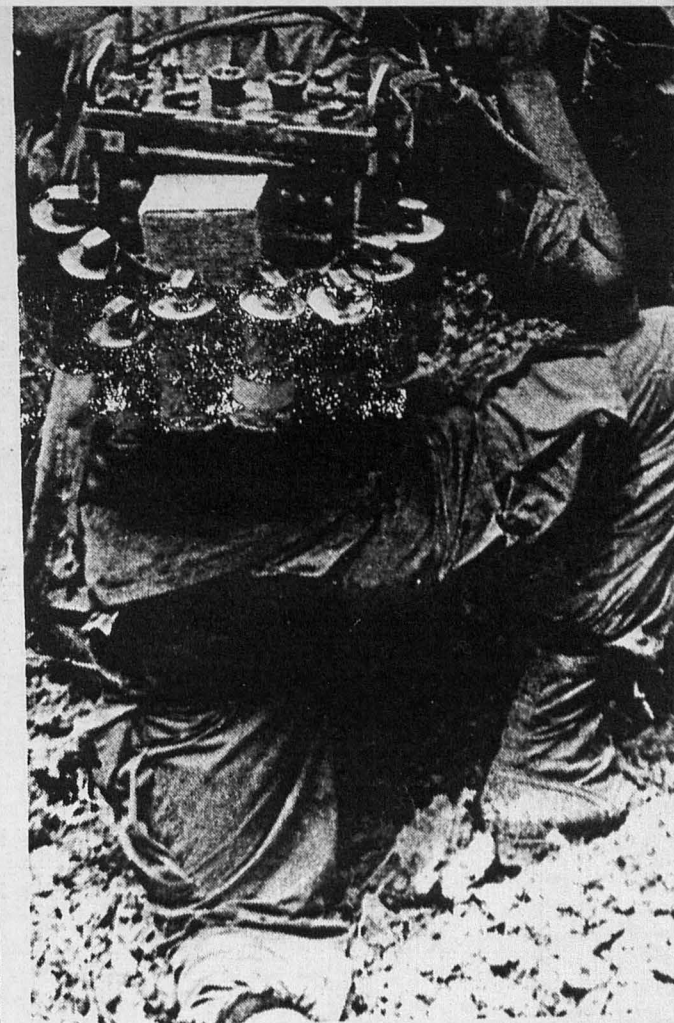




WE WENT THROUGH THE BOMB BLASTED JUNGLE IN

Nov 67
 Regimental base
 camp discovered in the
 Michelin Plantation —
 We were the orphan
 of the Division —
 for little was given
 we had no
 improvise
 as per Buell

NOV 67



A LIEUTENANT AND HIS RTO PREPARE TO ENTER

THE MORTARS ^{WERE} CAME IN —

"Triple Deuces" Destroy Viet Regimental Base

Story And Photos by SP4 Jan

DAU TIENG—A week long siege of a Viet Cong camp found by 3rd Bde, 25th Div, troops southeast of in the destruction of the enemy bastion. Twenty-eight V the combination of heavy airstrikes, artillery and the m 2nd Bn (Mech), 22nd Inf.

Over 400 bunkers, 250 two-man spider holes, and were destroyed in the spiderweb-like base camp.

According to 3rd Bde Commander COL Kenneth was a key to an expected attack on the Vietnamese located in Dau Tieng by the 101st Viet Cong Regiment eight of the enemy who were killed in an ambush in was massing in the areas.

In eight days over 30 airstrikes and thousands smashed into the 900x800 meter entrenchments.

Many bunkers were 10x10x6 feet in size and had cover protecting the Viet Cong who were found in the

The first day the camp was discovered, Bravo and the "Triple Deuces" uncovered 100 bunkers before intense and RPG rocket fire forced their withdrawal. The Air area until it was a veritable dust heap.

Returning to the camp, a grenade factory, complete hand and rifle grenade molds, VC Claymore molds, wooden sandcasting frames were found and destroyed. of rice, a small number of grenades and ammunition, and documents were captured.

Twenty dead enemy troops were found within the low graves or in the blasted underbrush. Another eight mortar squad that had mortared the battalion command ambush patrol from Charlie Co of the "Triple Deuces."



AN F-100 FIGHTER-BOMBER STREAKS OVER THE ENEMY ENTRENCHMENTS.



AFTER A WEEK LONG SIEGE OF A VIET CONG REGIMENTAL SIZED BASE CAMP, MEN OF THE "TRIPLE DEUCES" MOVE T

ces" Cong se Camp

James Friar

ong regimental-sized base
of Dau Tieng has resulted
Viet Cong were killed by
mechanized forces of the

and 1500 meters of trench

h E. Buell, the base camp
ese District Headquarters
eni. Papers found among
indicated that the 101st

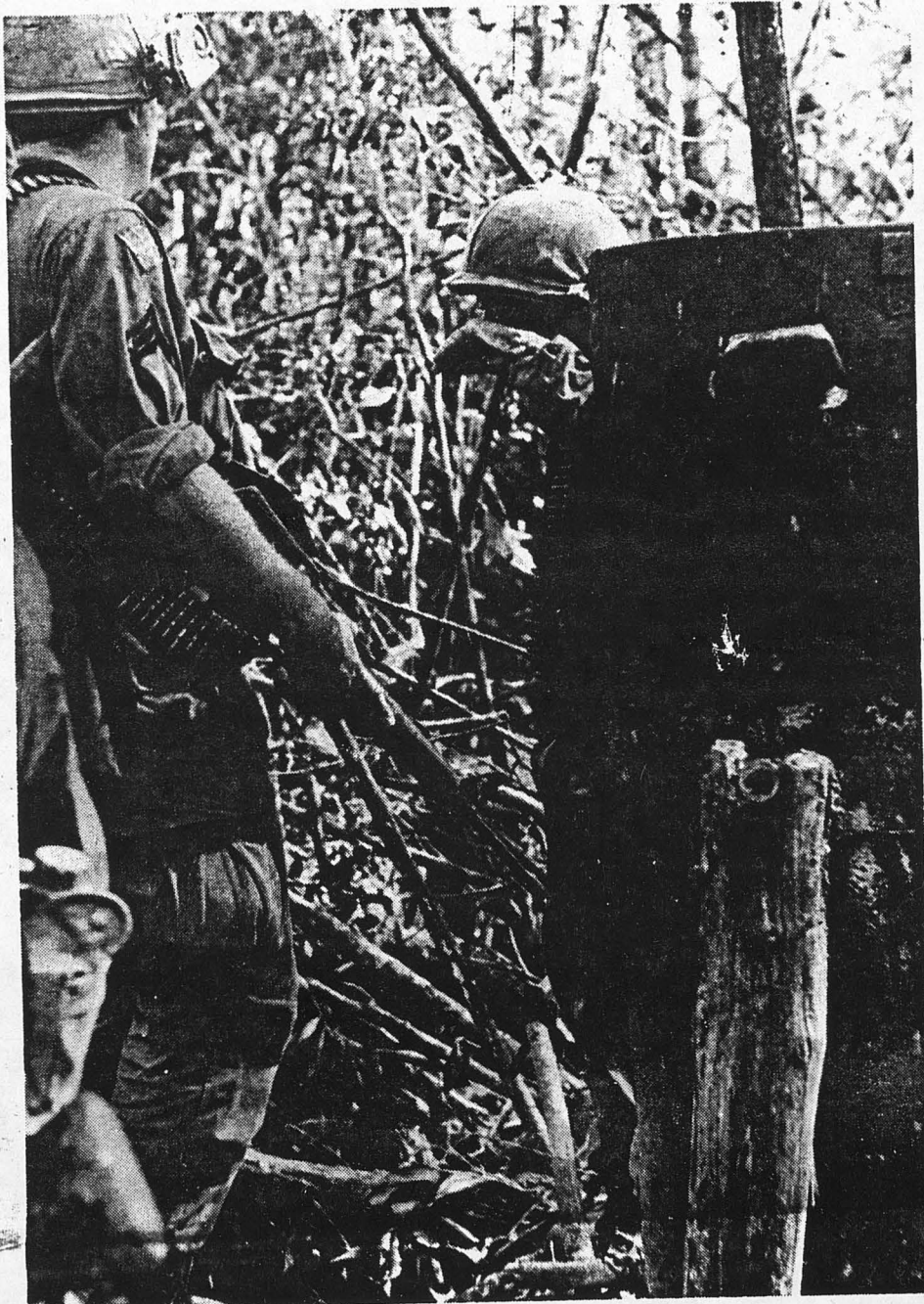
nds of rounds of artillery

ad three feet of overhead
he base camp.

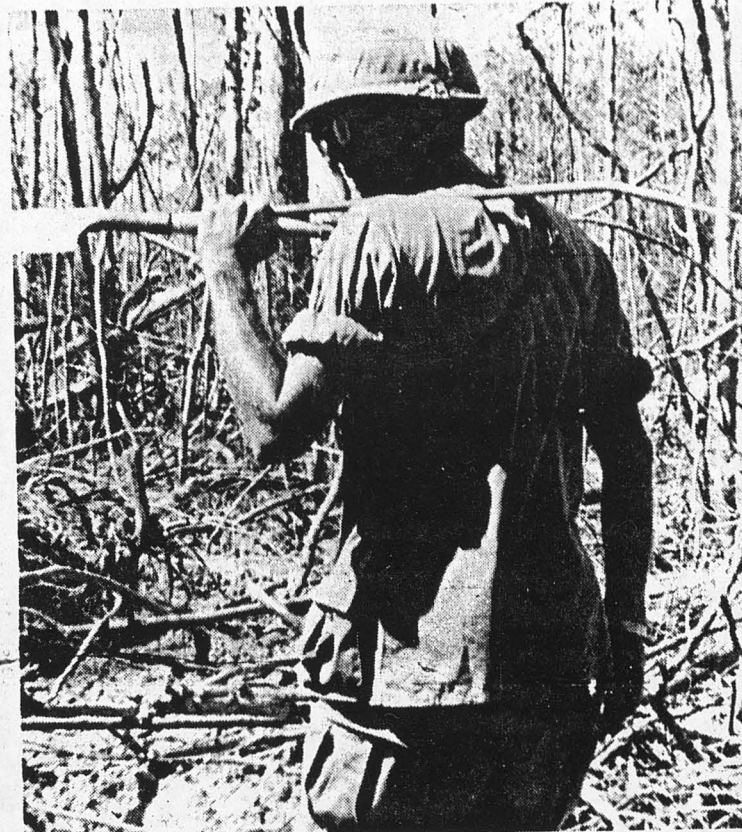
and Charlie Companies of
intense enemy small arms
r Force then pounded the

plete with crude furnace,
ds, scrap metal, and 300
ed. Twelve hundred pounds
n, a typewriter, and clothes

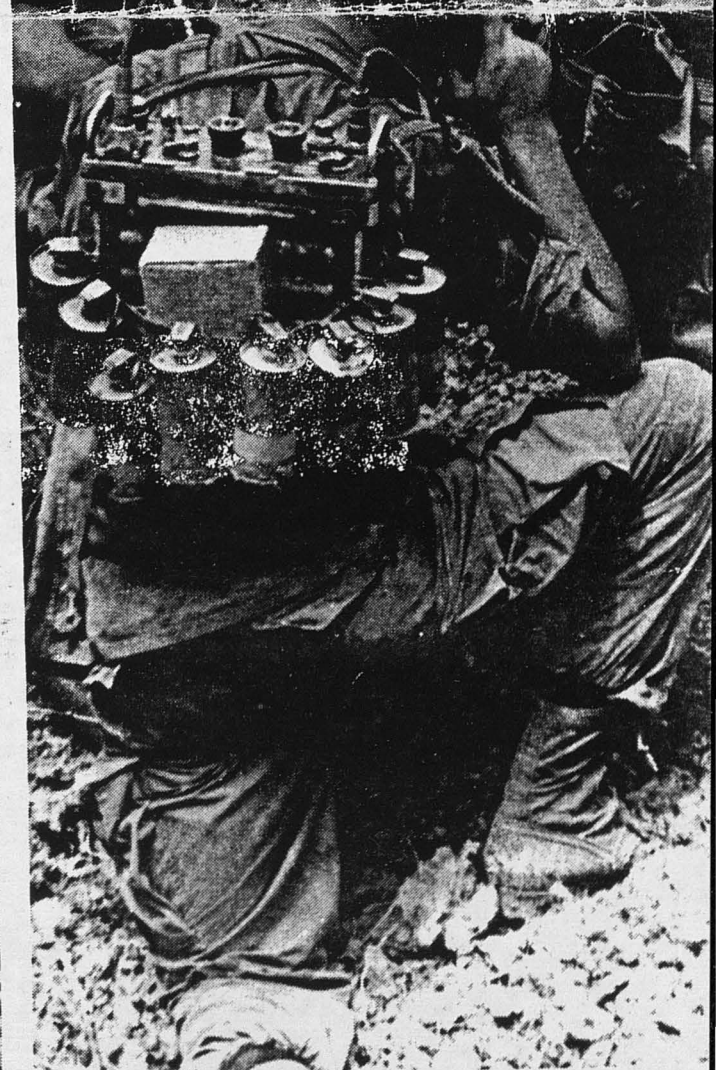
the camp, either in shal-
gh Viet Cong, part of a
nd post, were killed by an
es.



GRENADE MOLDS FOUND IN THE BASE CAMP.



LTC A.G. NORRIS, 2ND BN CO, CARRIES VC LADLE.



A LIEUTENANT AND HIS RTO PREPARE TO ENTER C



IE THROUGH THE BOMB BLASTED JUNGLE IN A SWEEP OF THE AREA.

WHEN THE MORTARS ^{TEFE} CAME IN

NOV 67