

"WELCOME TO EAGLE COUNTRY"
IF YOU WANT IT DONE
ASK THE 101ST



CAMP EAGLE

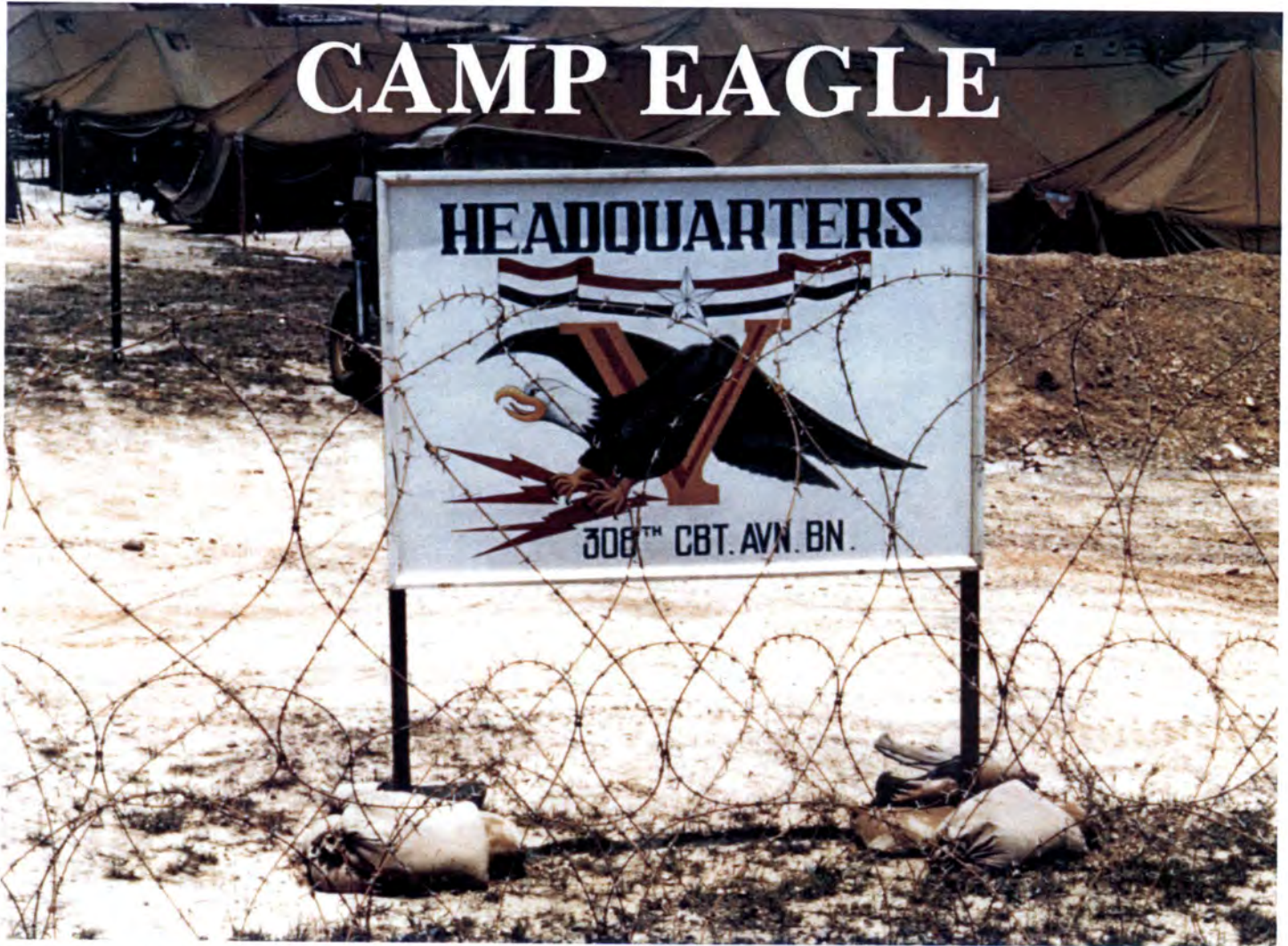


Photo by Colonel Hank Dreher - Black Adler 5, Black Widow 6





South China Sea

Vinh Loc

Da Nang

Hue

Phu Bai

Camp Eagle

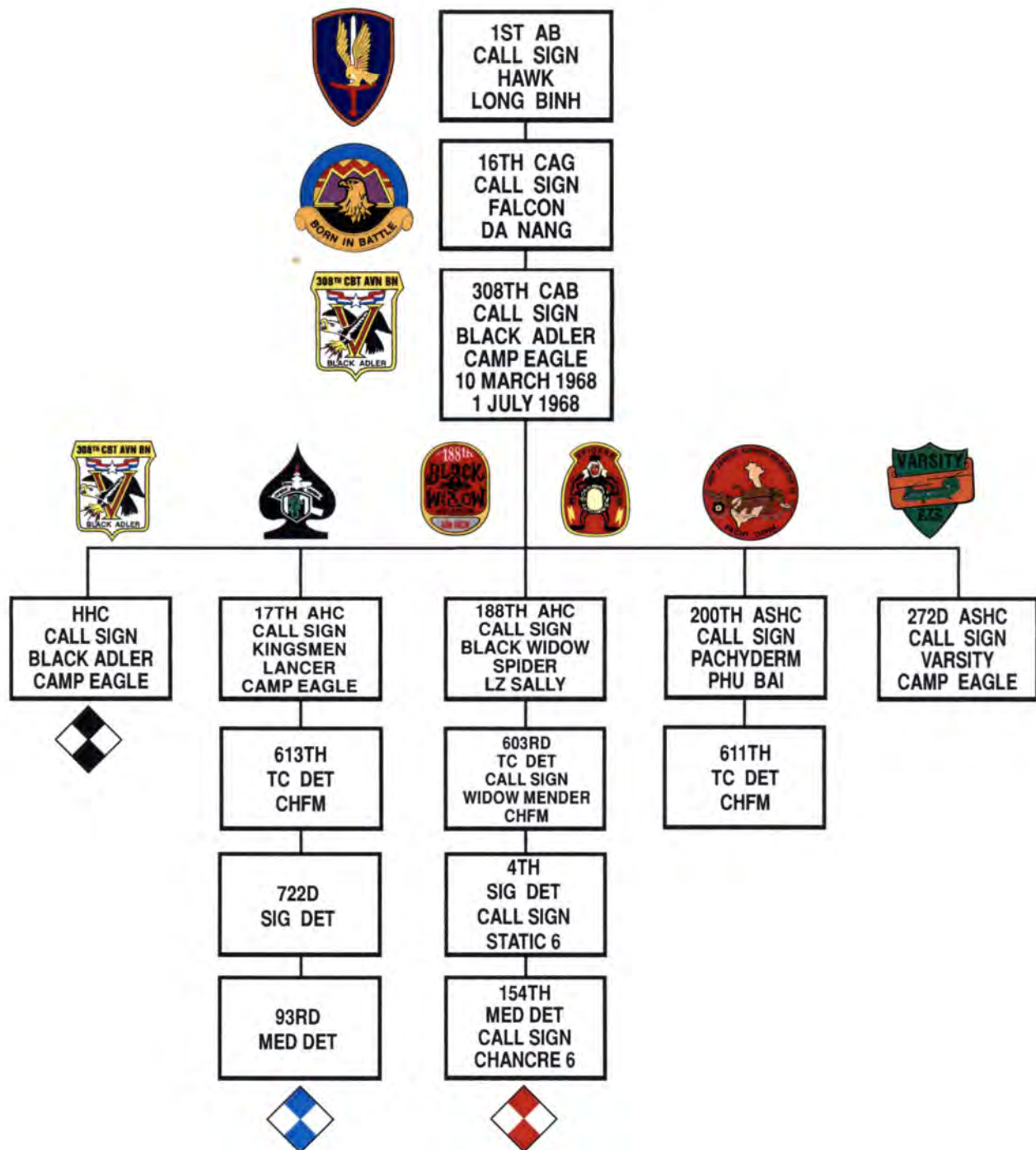
Phu Loc

Bach Ma

A Shau Valley



ORGANIZATIONAL CHAIN OF COMMAND



The 308th CAB aircraft markings consisted of a diamond divided diagonally to form four diamonds, each company was assigned a distinctive color within the diamond configuration for visual identification.

LISTEN UP

1ST AB - 1st AVIATION BRIGADE, LARGEST ARMY COMBAT COMMAND IN VIETNAM.

AHC - ASSAULT HELICOPTER COMPANY

ASHC - ASSAULT SUPPORT HELICOPTER COMPANY

CAB - COMBAT AVIATION BATTALION, I CORPS

CAG - COMBAT AVIATION GROUP

CHFM - CARGO HELICOPTER FIELD MAINTENANCE

HHC - HEADQUARTERS AND HEADQUARTERS COMPANY

MED DET - MEDICAL DETACHMENT

SIG DET - SIGNAL DETACHMENT

TC DET - TRANSPORTATION COMPANY DETACHMENT

SOURCE: 16th CAG (ORLL's) 30 April 1968, 308th CAB Quarterly Report, Operational Report 30 April 1968

CAMP EAGLE

