

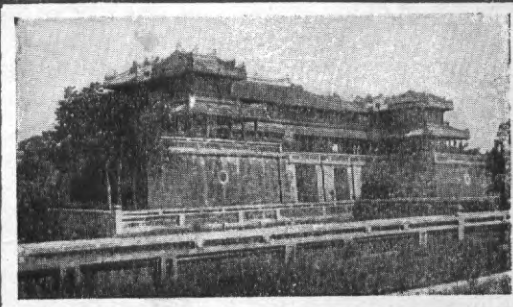


*One of the  
4-faced  
towers of  
the Bayon*

*Terrace of  
the Royal Palace,  
Angkor-Thom*



*South  
entrance  
of the  
Royal  
Palace,  
Hue*



# ALWAYS REMEMBER THE CALL OF FRENCH INDOCHINA

- Fine country.
- Beautiful monuments.
- Curious people.
- Big game plentiful.
- Easy access.
- Good roads.
- Good hotels.

JANUARY 1939

For all information  
**BUREAU OFFICIEL DU**

(Government non profit  
22, Rue Lagrandière

apply to  
**TOURISME INDOCHINOIS**

(Information Bureau)  
SAIGON Cochinchina

Telegrams: "TOURINDO" SAIGON

Printed in French Indochina



*A street in a Tonkinese village*

WE ARE CALLING TOURISTS TO INDOCHINA because we are conscious that nowhere else they would find united so many attractive features.

### INDOCHINA POSSESSES :

#### **For the artists**

Beautiful landscapes and scenery, curious towns, great diversity of populations from the most primitive to the well educated, museums full of ancient and modern art treasures, unique monuments of the vanished civilizations of the Khmer and Cham, also of the more recent Chinese and Annamese construction.

#### **For the learned**

Inexhaustible field of archaeological and historic researches, most interesting work of the Ecole Française d'Extrême-Orient, of the Institut Océanographique, etc. ; most varied flora and fauna, etc...

#### **For sportsmen and fishermen**

In almost every part of the forests and country, abundance of game small and big : tigers, elephants, wild buffaloes, boars, deer and all...

Plenty of fish in the rivers and sea.

#### **For the unhealthy**

Hill resorts with climate to compare with California or the Riviera. Noted physicians and surgeons in attendance.

#### **For quietness lovers**

Peaceful, undisturbed spots inland and on the seashores.

#### **For children**

Fine Government and private schools of all grades, tuition in French.

## A FEW TIPS ABOUT INDOCHINA

Indochina occupies an area of 737,000 Km<sup>2</sup> (290,000 square miles), while that of France is 550,000 Km<sup>2</sup>.

There are a number of rivers, of which the largest ones, the Red River (Fleuve Rouge) is 750 miles long and the Mékong 1,900 miles; they have formed by the enormous amount of their alluvia the great deltas of Tonkin in the North and of Cochinchina in the South.

Between the Mékong river and the China Sea stretches the long Annamitic Chain, with summits 9,000 feet above sea level.

French Indochina is composed of five different countries: Tonkin (North) Annam (East) Laos (West) Cochinchina (South), Cambodia (South-West). The Territory of Kouang-Tchéou-Wan (North of the Hai-Nam Straits) has been leased to France by China.

Indochina has a tropical climate, hot and damp. In Cochinchina, Cambodia, and Laos, the rainy season lasts from May to October, while the temperature ranges from 78° to 80° Fahr. The hottest period occurs at the end of the dry season (April) and may reach from 80° to 85° Fahr.

In Tonkin, the thermometer passes from an average of 60° Fahr. in winter to 80° and more in summer.

It is easy to travel in Indochina at all times, but if possible it is preferable to come from end of October to April.

It is advisable to bring clothes made of light material, with some warmer garments and light overcoats for winter in Tonkin or in the hilly regions. It is a good thing to wear a tropical helmet.

Tonkin is the crossing way to the Chinese province of Yunnan, very curious to visit with its tint of old fashioned China.

Through Cambodia, one may get by rail to Bangkok, the capital of Siam, very picturesque town, through which Penang and Singapore may also be reached.

## HOW TO TRAVEL IN INDOCHINA

The vast territory of Indochina possesses a very extended net of communications and all points interesting to visit can be easily reached.

**RAILWAYS.** — The lines have a comfortable rolling stock which is constantly ameliorated to keep pace with progress and which compares favourably with railway lines of neighbouring countries.

Lines in operation:

1° From Saigon (Cochinchina) to Na-Cham (Chinese Frontier) 1,930 kilomètres.

2° Saigon to Mytho line, 70 kil. (Cochinchina).

3° Tourcham to Dalat 84 kil. taking to the beautiful plateau of Lang-Bian 5,000 feet. (South Annam).

4° Phnom-Penh to Mongkolborey, Cambodia. (322 kil.)

5° Haiphong (Tonkin) to Lao-Kay/Frontier (398 kil.) and thence to Yunnanfu, China (465 kil.)

**ROADS.** — 30,000 kil. of roads, of which 20,000 kil. are passable in cars in all seasons, allow tourists to penetrate into the country in every direction. That enormous system, which is developed from year to year, is kept in an excellent condition.

Tourists who want to bring their car with them, can do so easily. In the case of foreign cars, they shall have no more to deposit the amount of import taxes but will be issued permits on the simple production of their identification documents and licences of circulation, against payment of small fees ranging from 2 to 15 piastres according to length of permit up to 6 months. Motorists having a «Carnet de passages en douane» issued by a Club affiliated to the International Association of recognized Automobile Clubs or to the Alliance Internationale de Tourisme will enter their car free of charges.

Fuel-stations exist in all centres and good garages and service-stations can be found in every town.

There are numerous Car and Bus services connecting principal points.

Besides, there are in all towns, cars for hire at reasonable prices.



*Elephants on the Annamese table-lands.*

WHEN YOU PLAN A TRIP ABROAD FOR YOUR NEXT VACATION, your intention is to go to places where you can see things you don't see everyday.

Such being the case, you will act wisely and save money in fixing your choice on the country which has the most to show in every respect.

### FRENCH INDOCHINA IS THAT COUNTRY

Do not hesitate and make now the necessary preparation for that wonderful voyage.

Keep in mind that every facility will be gladly given you to visit Indochina. You may bring your own car, your arms and ammunition if you are a sportsman, etc. or else you will find here all you want on hire or for sale.

### WRITE TO DAY TO

The OFFICIAL TOURIST BUREAU OF INDOCHINA

22, Rue Lagrandière, SAIGON

In the opinion of all those who have come here and left testimonials of their appreciation

### INDOCHINA IS A PARADISE FOR TOURISTS

having world renowned attractions such as the Bay of Along, the Royal Tombs at Hué, and the unique and captivating ancient khmer monuments of the Angkor group.



*A corner of the Bay of Along*

## HOW TO GET TO INDOCHINA

### 1° FROM THE SOUTH, by sea

from Singapore the port of call of shipping lines coming from Europe, India, Netherlands Indies, Australia, etc.

The trip is made from Singapore to Saigon on board the ships of the Messageries Maritimes (every 14 days) the Chargeurs Réunis (monthly), the K. P. M. (every 28 days) the Affréteurs Réunis (weekly), etc.

### 2° FROM THE SOUTH, by rail,

from Singapore or Penang via Bangkok.

From Bangkok, 8 hours journey on the Siamese Railway to the frontier-station at Aranya; motor car or bus services from Aranya to Angkor (100 miles on a good road).

### 3° FROM THE SOUTH, by air,

from Batavia, Palembang and Singapore by the weekly service of the K. N. I. L. M.

### 4° FROM THE WEST, by sea

from Bangkok to Réam, Kep or Hatién (Cambodia) by the Siam Steam Navigation Company's vessels weekly service, or from Bangkok to Saigon by diverse shipping lines.

### 5° FROM THE WEST, by air

from France and intermediate points of stop by the weekly Air France service to Saigon and Hanoi.

### 6° FROM THE EAST, by sea

from Manila, by the K. P. M. vessels to Saigon (every 28 days).

### 7° FROM THE NORTH, by sea

from Hongkong the port of call of shipping lines coming from China, Japan, Manila, America, etc.

The trip is made from Hongkong to Saigon on the Messageries Maritimes (every 14 days) the Burns Philp Line (every 70 days) and the China Navigation Co (twice a month) from Hongkong to Haiphong on the steamers of the Compagnie Asiatique de Navigation (weekly) and the China Navigation Co (weekly).

### 8° FROM THE NORTH, by rail

from Yunnanfu to Hanoi every day, by trains of the Compagnie Française des Chemins de fer de l'Indochine et du Yunnan.

### 9° FROM THE NORTH, by air

from Hongkong to Hanoi every week by planes of Air France.

Other lines with irregular services also call at Indochinese ports.

## HOTEL ACCOMMODATION IN INDOCHINA

The list of hotels in Indochina is too long to be given in these brief pages.

Tourists may be assured that they will find, at all important places, very comfortable hotels, most of them with all rooms provided with private complete bathrooms.

Even at minor towns, they will find a hotel or bungalow affording the comforts necessary to the traveller.

On lesser used by-roads, the Government maintain at convenient distances rest-houses where the traveller can stop for the night in case of need.

Hotel prices vary here, of course, as everywhere, according to the locality, class of hotel, length of stay, etc. Tourists may generally contemplate for complete « pension », a daily expenditure averaging from 8 to 12 piastres per person, in hotels with modern comfort.

The Indochinese piastre or \$ is worth 10 French francs.



*Moi Hunters*

---

### GOOD FRENCH CUISINE IN ALL HOTELS

---

GOOD WINES ARE IN STORE,  
WHISKY AND ALL DRINKS.

---

For all supplementary information  
apply to

The OFFICIAL TOURIST BUREAU  
22, Rue Lagrandière,  
SAIGON

---