

copy 4 of 4 copies

File

HEADQUARTERS
1st Marines (-) (Rein)
3d Marine Division (Rein), FMF
P.O., San Francisco, 96601

3/mal/sgv
3480
12 February 1966
SER: 0038-66

SECRET

From: Commanding Officer
To: Commanding General, 3d Marine Division (Rein), FMF

1ST MARINES SITREP 22 as of 12 February 1966

Encl: (1) 1st Battalion, 4th Marines SITREP as of 12 February 1966
(2) Consolidated Operations Summary

1. ATTACHMENTS.

A. Co A (-) (Rein), 1st Amph Bn. One LVT-1 and ten LVT-5's are in direct support of 1/4. Two LVT-5's are in direct support of 1/4 at the An Tan Bridge. Thirteen LVT-5's, one LVT-1 and one LVT command tractor are in direct support of Task Force Delta. Two LVT's are deadlined to company maintenance.

B. Co B (-), 3d AT Bn. Company Headquarters continues maintenance and logistical support of the 1st and 2nd platoons which are in direct support of 1/4. One defensive position in the Headquarters, 4th Marines perimeter was manned from 111830H to 120630H. The 1st platoon continues in direct support of 1/4, with the light section located in the Battalion CP (Near). The heavy section is located at Hill 69. No enemy contact during the last twenty four hours. Deadlined equipment included one M58A1 tank and one M54 tank.

SECRET

SECRET

C. Co A (-) (Main), 1st Tank Bn. Company Headquarters continues logistical support of the two tank platoons. Periodic illumination of possible sea approaches to the Regimental Command Post was conducted using 18" searchlights from one M48A3 tank. The 1st platoon is in direct support of 1/4 at Hill 69. The 2nd platoon is in direct support of 1/4. A light section moves from normal daytime positions at BT 527009 to nighttime positions at BT 528104. Lensen infrared surveillance was conducted at intervals during hours of darkness. No enemy contact during the last twenty four hours. Deadlined equipment included one M58A1 tank, one M54 tank and one M48A3 tank.

D. Co A (-) (Main), 1st Eng Bn.

- (1) Continued construction work at Hill 69.
- (2) Constructed one water tower at 1st Marine Command Post.
- (3) Deadlined equipment included four M-274's, two 55 GPM pumps, one water purification unit, one TD-18 tractor and one TD-15 tractor.

MANE PARTICIPATION

Footable	13,480
Raw	11,000
Total	24,480

T. H. HANLIN
by direction

DECLASSIFIED

CONFIDENTIAL

X

1ST BN, 4TH MARINES SITREP NUMBER 282 AS OF 121600H FEBRUARY 1966

1. Unit Action With Contact.

- a. At 112117H, the waterborne patrol apprehended four curfew violators vicinity, (BT 495109). All four had Identification Cards and were turned into SDC Post number one for detention and disposition by the Village Chief in the morning.
- b. At 112228H, FDC on Hill 69 had two rocks thrown into their position vicinity (BT 467068). Two M-26 grenades were thrown by Marines with unknown results.
- c. At 112235H, FDC on Hill 69 vicinity (BT 467068) observed muzzle flashes and heard one to two small arms rounds vicinity, (BT 470060). Impact area believed to be vicinity, (BT 469068).
- d. At 120418H, Company B heard a secondary explosion vicinity (BT 461148) during H&I fires. Area is being kept under surveillance.
- e. At 120530H, Marines on Hill 69 sighted one VC vicinity, (BT 469069). Eight rounds fired at VC with unknown results.
- f. At 120855H, a platoon from Company B reported approximately fifteen rounds small arms fire vicinity (BT 430100). A patrol was sent out to sweep the area, with negative results.
- g. At 121200H a patrol from Company D vicinity (BT 430075) received two rounds small arms fire from vicinity (BT 428085). Marine patrol returned fire. Area was checked, AP mine was discovered vicinity (BT 422078). While attempting to destroy mine, it went off prematurely slightly wounding one man. Another Marine stepped on a mine in the same vicinity which did not go off. However the man wrenched his knee in taking cover. Helicopters received sporadic from the same area while landing to pick up the evacuees. They were unable to locate the origin of fire.
- h. At 121445H, a patrol from Company D vicinity, (BT 423087) received six rounds small arms fire from vicinity, (BT 425090). Fire was returned by the patrol, results unknown.

J. K. Ringler
J. K. RINGLER
Major USMC
S-3

Enclosed (1)
CONFIDENTIAL

DECLASSIFIED

OPERATIONS SUMMARY

ORGANIZATION: _____ BN _____ REGT _____ TAOR

PERIOD: _____ 1001Z _____ TO _____ 1000Z _____

DATE _____

TYPE ACTION	FIRE TEAM DAY / NIGHT	SQUAD DAY / NIGHT	PLATOON DAY / NIGHT	COMPANY #1 DAY / NIGHT	BATTALION #1 DAY / NIGHT
SCOUT SNIPER (SS)	<div><div></div><div>A B</div></div>				
LISTENING POST (LP)	<div><div></div><div>C D</div></div>				
AMBUSH (AMB)	<div><div></div><div>E F</div></div>	<div><div></div><div>G H</div></div>	<div><div></div><div>I J</div></div>		
RECON PATROL (REC)	<div><div></div><div>K L</div></div>	<div><div></div><div>M N</div></div>	<div><div></div><div>O P</div></div>		
SECURITY PATROL (SEC)	<div><div></div><div>Q R</div></div>	<div><div></div><div>S T</div></div>	<div><div></div><div>U V</div></div>		
SEARCH & DESTROY (S&D)		<div><div></div><div>W X</div></div>	<div><div></div><div>Y Z</div></div>	<div><div></div><div>AA BB</div></div>	<div><div></div><div>CC DD</div></div>
CLEARING (CLR)		<div><div></div><div>EE FE</div></div>	<div><div></div><div>GG HH</div></div>	<div><div></div><div>II JJ</div></div>	<div><div></div><div>KK LL</div></div>
REMARKS:					

#1 All Company and Battalion search operations will be reported as S/D or CLR as is most appropriate

CONTACTS

PROVINCE/
COORDINATES

DATE/
TIME

ACTION
SIZE TYPE+

FRD UNIT/
LOSSES

ENM UNIT/
LOSSES

INIT
BY

MATERIAL
WEAPONS
IWC CWC

CAPT
OTH*

CHANG TUN

11

1st Patrol

BT 155109

2117H

PT ENG.

2/10

UNK

0

0

0

CHANG TUN

11

PBC P-8

UNK

BT 187043

2200H

N/A N/A

NONE

UNK

VO 5

0

0

0

CHANG TUN

11

PBC P-8

UNK

BT 187043

2235H

N/A N/A

NONE

UNK

VO 5

0

0

0

CHANG TUN

12

CG

UNK

BT 181118

0110H

N/A N/A

NONE

UNK

VO 5

0

0

0

CHANG TUN

12

1/1 CP P-8

UNK

BT 180049

0530H

N/A N/A

NONE

UNK

VO 5

0

0

0

CHANG TUN

12

Co B

UNK

BT 180100

0850H

PLT ENG.

NONE

UNK

VO 5

0

0

0

CHANG TUN

12

Co B

UNK

BT 180005

1200H

PLT ENG

1 W/L

UNK

VO 5

0

0

0

* USE TYPE ACTION ABBREVIATIONS SHOWN ON REVERSE SIDE
* DESCRIBE CAPTURED MATERIAL OTHER THAN WEAPONS IN REMARKS SECTION.

REMARKS

DECLASSIFIED

DECLASSIFIED

PROVINCE/
COORDINATES

DATE/
TIME

ACTION
SIZE TYPE+

FRD UNIT/
LOSSES

ENM UNIT/
LOSSES

INIT
BY

MATERIAL
WEAPONS
IWC CWC

CAPT
OTH*

QUANG TRI

12

C-3

ONE

BT 123007

1145H

PLF

200

ENM

ONE

TO

•

•

•

DECLASSIFIED

DECLASSIFIED

+ USE TYPE ACTION ABBREVIATIONS SHOWN ON REVERSE SIDE.

* DESCRIBE CAPTURED MATERIAL OTHER THAN WEAPONS IN REMARKS SECTION.

REMARKS

PLANS SUMMARY

ORGANIZATION: _____ BN _____ REGT _____ TAOR
 PERIOD: _____ 1001Z _____ TO _____ 1000Z _____

DATE _____

TYPE ACTION	FIRE TEAM DAY / NIGHT	SQUAD DAY / NIGHT	PLATOON DAY / NIGHT	COMPANY #1 DAY / NIGHT	BATTALION #1 DAY / NIGHT
SCOUT SNIPER (SS)	<div><div></div><div>A</div></div> <div><div></div><div>B</div></div>				
LISTENING POST (LP)	<div><div></div><div>C</div></div> <div><div></div><div>D</div></div>				
AMBUSH (AMB)	<div><div></div><div>E</div></div> <div><div></div><div>F</div></div>	<div><div></div><div>G</div></div> <div><div></div><div>H</div></div>	<div><div></div><div>I</div></div> <div><div></div><div>J</div></div>		
RECON PATROL (REC)	<div><div></div><div>K</div></div> <div><div></div><div>L</div></div>	<div><div></div><div>M</div></div> <div><div></div><div>N</div></div>	<div><div></div><div>O</div></div> <div><div></div><div>P</div></div>		
SECURITY PATROL (SEC)	<div><div></div><div>Q</div></div> <div><div></div><div>R</div></div>	<div><div></div><div>S</div></div> <div><div></div><div>T</div></div>	<div><div></div><div>U</div></div> <div><div></div><div>V</div></div>		
SEARCH & DESTROY (S&D)		<div><div></div><div>W</div></div> <div><div></div><div>X</div></div>	<div><div></div><div>Y</div></div> <div><div></div><div>Z</div></div>	<div><div></div><div>AA</div></div> <div><div></div><div>BB</div></div>	<div><div></div><div>CC</div></div> <div><div></div><div>DD</div></div>
CLEARING (CLR)		<div><div></div><div>EE</div></div> <div><div></div><div>FE</div></div>	<div><div></div><div>GG</div></div> <div><div></div><div>HH</div></div>	<div><div></div><div>II</div></div> <div><div></div><div>JJ</div></div>	<div><div></div><div>KK</div></div> <div><div></div><div>LL</div></div>

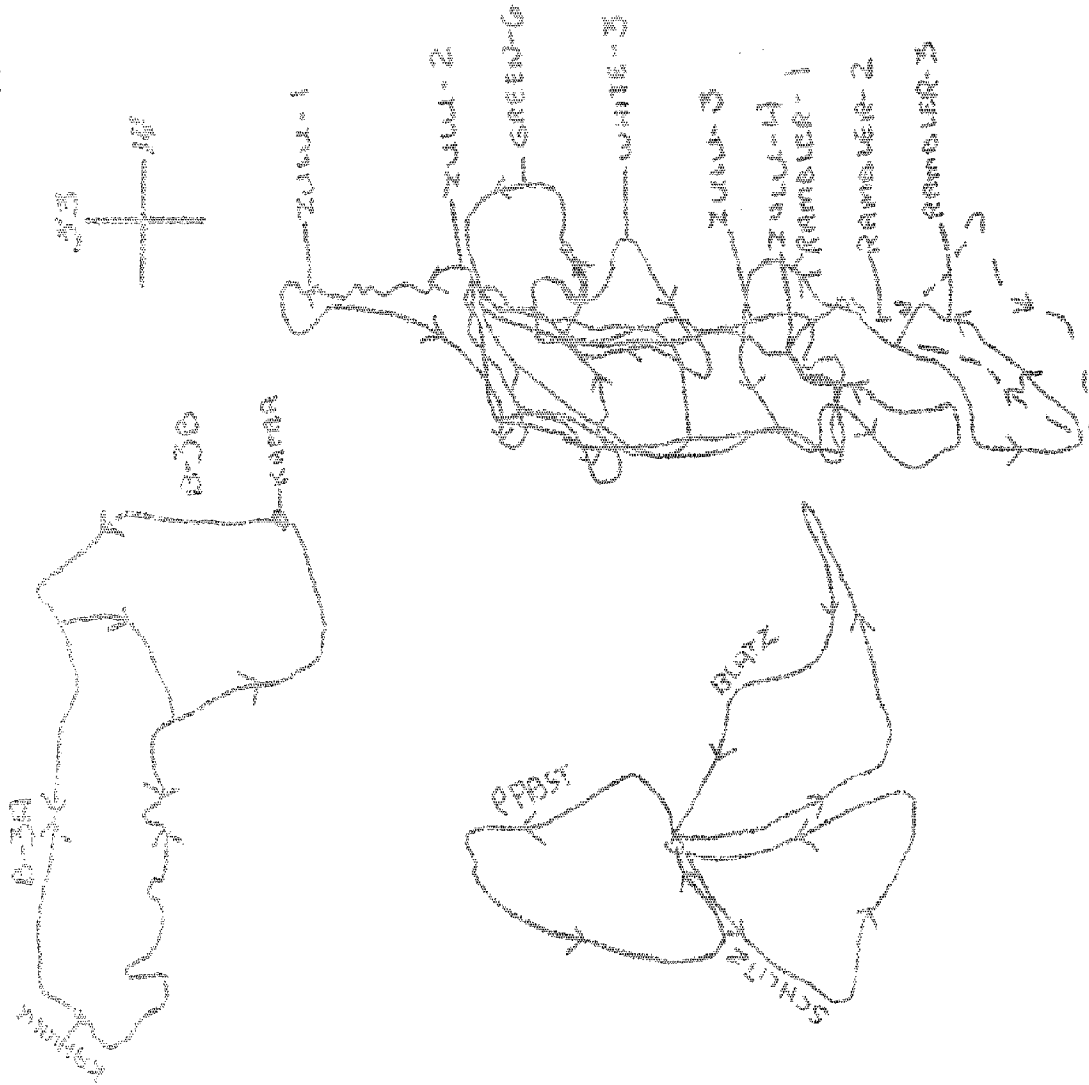
REMARKS:

#1 All Company and Battalion operations will be reported and will be classified as either S/D or CLR as is most appropriate

CONFIDENTIAL

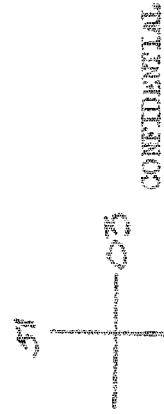
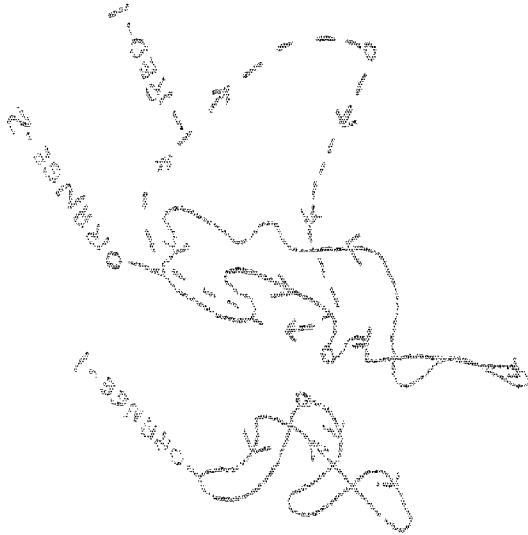
01/21/66
 FOR MR. LTH HARRIS(-) (CIVIL)
 CHU LAI, VIETNAM
 12000 ESTABLISH 1966

DAY PATROLS FOR
 14 FEBRUARY 1966

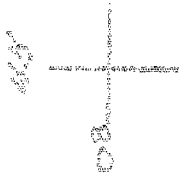
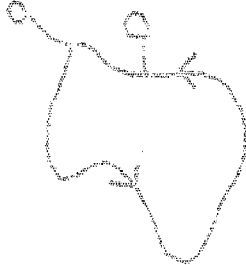
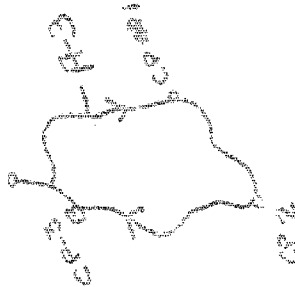


CONFIDENTIAL

106 00. 1000 000000 (0)(P000)
000 101, 000000
100000 000000 1000



CONFIDENTIAL



DAY PATROLS/FORWARD POSITIONS
14 FEBRUARY 1966

CONFIDENTIAL

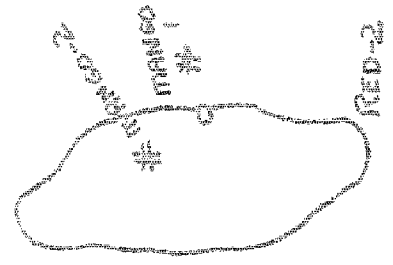
CONFIDENTIAL



24/10/66 0700 5700 0000

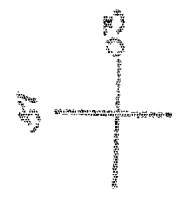
1st Bn. 4th Marines (-)(Rein)
CHU LAI, VIETNAM
121300H FEBRUARY 1966

NIGHT PATROLS/FORWARD POSITIONS
14 FEBRUARY 1966



0105
7104
51
52
53
54
55
56
57
58
59
60
61
62
63
64
65
66
67
68
69
70
71
72
73
74
75
76
77
78
79
80
81
82
83
84
85
86
87
88
89
90
91
92
93
94
95
96
97
98
99
100

0105
7104
51
52
53
54
55
56
57
58
59
60
61
62
63
64
65
66
67
68
69
70
71
72
73
74
75
76
77
78
79
80
81
82
83
84
85
86
87
88
89
90
91
92
93
94
95
96
97
98
99
100



CONFIDENTIAL

OPERATIONS SUMMARY

ORGANIZATION: BN 1st REGT CHU LAI PAOR

PERIOD: 11 1800H Feb 66 TO 12 1800H Feb 66

~~12 February 1966~~
DATE

TYPE ACTION	FILE TEAM DAY/NIGHT	SQUAD DAY/NIGHT	PLATOON DAY/NIGHT	COMPANY #1 DAY/NIGHT	BATTALION #1 DAY/NIGHT
SCOUT SNIPER (SS)	<div><div></div><div>A</div><div></div><div>B</div></div>				
LISTENING POST (LP)	<div><div></div><div>C</div><div>3</div><div>D</div></div>				
AMBUSH (AMB)	<div><div></div><div>E</div><div>35</div><div>F</div></div>	<div><div></div><div>G</div><div>4</div><div>H</div></div>	<div><div></div><div>I</div><div></div><div>J</div></div>		
RECON PATROL (REC)	<div><div></div><div>K</div><div></div><div>L</div></div>	<div><div></div><div>M</div><div></div><div>N</div></div>	<div><div></div><div>O</div><div></div><div>P</div></div>		
SECURITY PATROL (SEC)	<div><div>1</div><div>Q</div><div>23</div><div>R</div></div>	<div><div>5</div><div>S</div><div>6</div><div>T</div></div>	<div><div></div><div>U</div><div></div><div>V</div></div>		
SEARCH & DESTROY (S&D)		<div><div></div><div>W</div><div></div><div>X</div></div>	<div><div>1</div><div>Y</div><div></div><div>Z</div></div>	<div><div>2</div><div>AA</div><div></div><div>BB</div></div>	<div><div></div><div>CC</div><div></div><div>DD</div></div>
CLEARING (CLR)		<div><div></div><div>EE</div><div></div><div>FF</div></div>	(COMBAT PATROL) <div><div></div><div>GG</div><div></div><div>HH</div></div>	<div><div></div><div>II</div><div></div><div>JJ</div></div>	<div><div></div><div>KK</div><div></div><div>LL</div></div>

REMARKS:

#1 All Company and Battalion size operations will be reported and will be classified as either S/D or CLR as is most appropriate

DECLASSIFIED

DECLASSIFIED