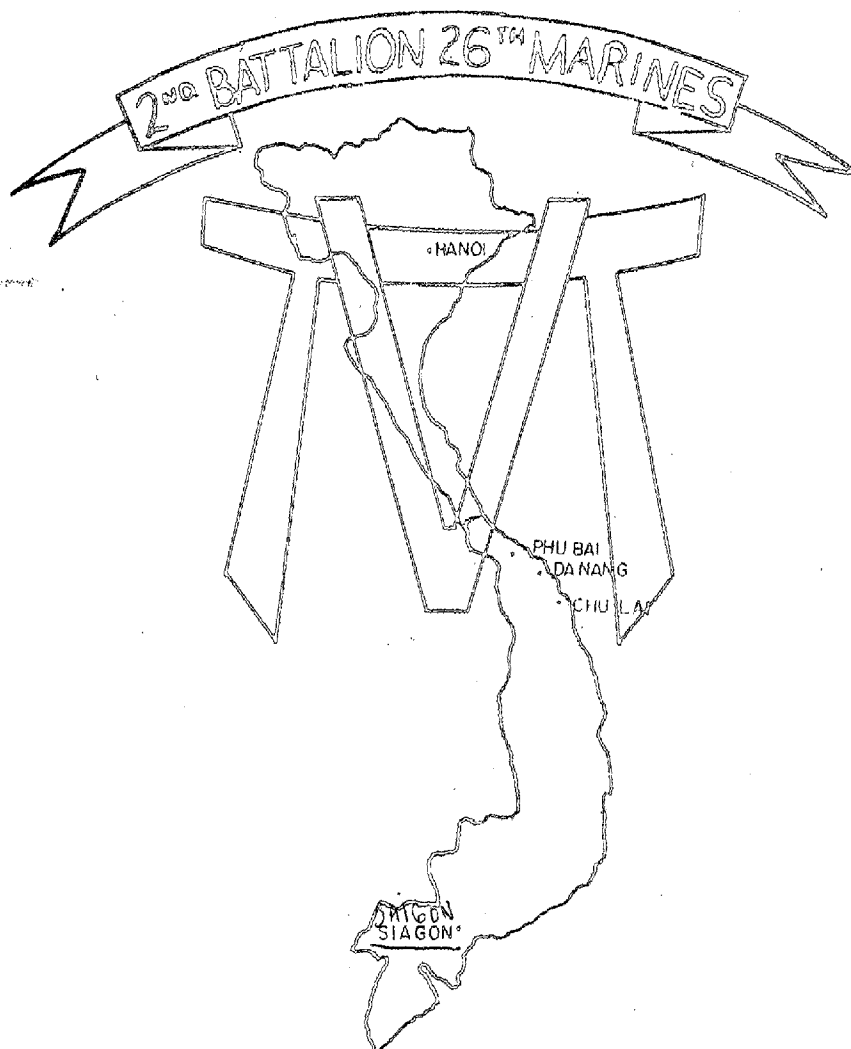


UNCLASSIFIED



2/26

# COMMAND CHRONOLOGY

Dec 1968

UNCLASSIFIED

UNCLASSIFIED

CTG 79.4

009-69

HEADQUARTERS  
Battalion Landing Team 2/26  
9th Marine Amphibious Brigade, FMF  
FPO San Francisco, 96602

004 69#3  
3/HEL/maw  
5750  
06 January 1969  
003700969

From: Commanding Officer  
To: Commanding General, Ninth Marine Amphibious Brigade, FMF  
Subj: Command Chronology for the period 01 December to 31 December 1968.

Ref: (a) MCO 5750.2A  
(b) FMFPACO 5750.8  
(c) BrigO 5750.1c  
(d) MAP: Hoi An, Sheet 6640 I, Series L 7014, 1:50,000

Encl: (1) Battalion Landing Team 2/26 Command Chronology

1. In accordance with the provisions of reference (a), (b), and (c), enclosure is submitted herewith.

*W.F. Sparks*  
W.F. SPARKS  
Lieutenant Colonel  
Commanding

|               |                 |       |
|---------------|-----------------|-------|
| DISTRIBUTION: | CG 9th MAB      | 01-02 |
|               | CTG 79.4        | 03-18 |
|               | CO, 1st MARINES | 19    |
|               | S-3 BLT 2/26    | 20    |
|               | S&C FILES       | 21-22 |

UNCLASSIFIED

BLT 2/26

CMD CHRON

Dec 1968

UNCLASSIFIED

HEADQUARTERS  
Battalion Landing Team 2/26  
9th Marine Amphibious Brigade, FMF  
FPO San Francisco, 96602

3/HEL/maw  
5750  
06 January 1969  
Serial No. \_\_\_\_\_

COMMAND CHRONOLOGY

1 December to 31 December, 1968

INDEX

PART I ORGANIZATIONAL DATA  
PART II NARRATIVE SUMMARY  
PART III LISTINGS OF SIGNIFICANT EVENTS  
PART IV SUPPORTING DOCUMENTS

1

Enclosure (1)

UNCLASSIFIED

## PART I

## ORGANIZATIONAL DATA

## DESIGNATION

UNCLASSIFIED

## COMMANDER

Battalion Landing Team 2/26  
2nd Battalion, 26th Marines

LtCol SPARKS  
LtCol SPARKS

1-31 Dec  
1-31 Dec

## SUBORDINATE UNITS

H&amp;S Co

1stLt HARRINGTON  
1stLt GREENE

1-18 Dec  
19-31 Dec

E Co

1stLt LEWEY  
2ndLt SMITH

1-17 Dec  
18-31 Dec

F Co

Capt HARTMAN  
Capt STOLZ

1-11 Dec  
12-31 Dec

G Co

Capt SEAL

1-31 Dec

H Co

Capt FARMER

1-31 Dec

## ATTACHED UNITS

Btry B, 1st Bn, 13th Mar

Capt FRANZEN

1-31 Dec

Mortar Btry, 1st Bn, 12th Mar

1stLt SAUNDERS

1-31 Dec

1stPlt(Rein) Co A, 5th AmTrac Bn

1stLt COX  
GySgt MOSQUEDA

1-06 Dec  
7-31 Dec

1stPlt (Rein) Co A, 5th AT Bn

SSgt HOOKANO

1-31 Dec

2ndPlt (Rein) H&amp;S Co, 3rd S.P. Bn

1stLt O'NEILL

1-31 Dec

2ndPlt (Rein) Co C, 3rd Engr Bn

1stLt ASHCROFT  
2ndLt MCPHEARSON

1-04 Dec  
5-31 Dec

2ndPlt (Rein) Co C, 3rd MT Bn

1stLt LAMBIN

1-31 Dec

4thPlt (Rein) Co A, 5th Tk Bn

1stLt MURPHY  
2ndLt JENNINGS

1-16 Dec  
16-31 Dec

LSU, BLT 2/26

1stLt BURNS

1-31 Dec

Det, HQ Bn, (Postal, Disb, Photo)

1stLt LOVELACE

1-31 Dec

1st Clearing Plt (Rein) Co D, 5thMedBn Lt (USN) HARP

1-31 Dec

Security Det, HQ Co, 9thMAB

Cpl BROWN

1-31 Dec

Naval Gunfire Liaison Team

None  
Lt (JG) CASSIDY

1-15 Dec  
16-31 Dec

UNCLASSIFIED

Enclosure (1)

UNCLASSIFIED

Det, Radio Relay, HQ Co, 26th Mar

Sgt BUFFA

1-31 Dec

2. LOCATION

BLT Rear

Camp Books BT 934806  
USS OKINAWA (LPH-3)1-07 Dec  
08-31 Dec

BLT CP's

01-07 Dec

Vicinity BT 038613

08-15 Dec

USS OKINAWA

15-24 Dec

Vicinity BT 152515

24-25 Dec

USS OKINAWA

26-31 Dec

Vicinity BT 167491

3. STAFF OFFICERS

Executive Officer

Maj D. H. CLARK  
Maj J. D. LYNCH01-23 Dec  
24-31 Dec

S-1

1stLt J. A. MCELROY

01-31 Dec

S-2

SSgt H. E. ROLAND

01-31 Dec

S-3

Maj J. D. LYNCH  
Maj D. H. CLARK01-23 Dec  
24-31 Dec

S-4

Maj J. C. GREGAN  
Capt G. BEST01-07 Dec  
08-31 Dec

S-5

1stLt R. I. MORGAN

01-31 Dec

4. AVERAGE MONTHLY STRENGTHUSMCUSNOff EnlOff Enl

54 1630

8 89

UNCLASSIFIED

|                                       |                |               |
|---------------------------------------|----------------|---------------|
| 2d Plt, Co C, 3d Engr Bn              | 1stLt ASHCROFT | 25Oct - 16Nov |
| 1st Plt, Co A, 5th RECON Bn           | 1stLt McDONALD | 25Oct - 07Nov |
|                                       | 2ndLt HELLMAN  | 07Nov - 16Nov |
| 4th Plt (Rein), Co A, 5th Tank Bn     | 1stLt MURPHY   | 25Oct - 16Nov |
| Det, 2d Plt (Rein), H&S Co, 3rd SP Bn | 1stLt O'NEILL  | 25Oct - 16Nov |
| 2d Plt (Rein), Co C, 3rd MT Bn        | 1stLt LAMBIN   | 25Oct - 16Nov |
| LSU, BIT 2/26                         | 1stLt BURNS    | 25Oct - 16Nov |
| Security Det, HQ Co, 9th MAB          | Cpl MARKHAM    | 25Oct - 16Nov |
| Det, Hq Bn, (Postal, Disb & Photo)    | 1stLt LOVELAGE | 25Oct - 16Nov |
| F Co (Rein), 2d Bn, 1st Marines       | Capt HAYES     | 11Nov - 12Nov |

## 7. Supporting Forces.

### a. Artillery

(1) A command detonated mine incident resulted in the FSC and his assistant being medevaced out of country, and all of the FSCC's records being destroyed; no data is available on artillery support used on Operation GARRARD BAY by BIT 2/26.

### b. Air

(1) Twenty-four (24) fixed wing sorties.

(a) Sixteen (16) USMC

(b) Three (3) USN

(c) Five (5) USAF

(2) The above does not include:

(a) Sixteen (16) Aerial Observers USMC

(b) Twelve (12) Huey Gunships USMC

(c) One (1) C-130 Flareship USMC

(d) One (1) AC-47 Gun Flareship USAF

(3) In all cases air support was effective once it arrived on station; the average response time for aerial observers/Huey Gunships was thirty (30) minutes from the time of initial request. The average response time for

fixed wing aircraft was one (1) hour. Sixteen (16) of the fixed wing sorties were LZ prep; eight (8) were in support of troops in contact.

(4) Regimental TACP net was used to request air. This in violation of doctrine which states that the Battalion will use the Tactical Air Request Net ( a direct line to DASC). As a result of using Regimental TACP, much time was lost while the request went from Battalion to Regiment to Division-Wing and finally to DASC.

#### 8. Intelligence.

a. Prior to the operation the Dien Ban Local Force Company, the Hoi An Local Force Company and the T-89 Sapper Battalion were known to be operating in the A.O. Further, it was known that the R-20 Battalion which was located in the vicinity of BT 1054, had on occasion conducted operations in the A.O.

b. As the operation progressed the enemy units in the A.O. restricted their activities to intelligence gathering, placement of mines and SFD's with small night probes of the BLT's elements.

9. Mission. Find, fix and destroy enemy forces, caches and installations; interdict enemy LOC to Danang and in conjunction with 1st Marines, ARVN Forces, ROKMC and National Police, conduct detailed Cordon and Search Operations in the A.O.A.

10. Concept of Operation. Commencing at H Hour on 25 October through 16 November, BLT 2/26 conducted a series of Amphibious and Land Based assaults against VC/NVA Forces in the A.O. by helicopterborne forces to find, fix and destroy enemy forces, caches and installations in the A.O.; to interdict enemy LOC to Danang; and in conjunction with 1st Marines, ARVN Forces, ROKMC and National Police, conduct deliberate Cordon and Search Operations in the A.O.

#### 11. Execution.

At 250900H, BLT 2/26 landed to conduct Cordon and Search Operations in accordance with CG III MAF msg 190328Z. On the 25th of October, 15 KBA's at BT 078629, 6 AP SFD's and 3 AT mines were found and one female whose name was on the Black List was detained. At 251530H, Operational Control of BLT 2/26 passed to 1st Marines. BLT 2/26 then commenced Operation GARRARD BAY.

On the 26th, 1 female whose name was on the Black List was detained. At 262345H, an E Company LP exchanged small arms fire with an unknown size enemy unit which resulted in 2 USMC WIA (minor).

At 270850H, BLT 2/26 was helilifted to Phong Ho (BT 062623) sustaining 1 USMC WIA and 1 USMC DOW due to enemy small arms fire while airborne. The days search uncovered 28 bunkers and approximately 3500 lbs of hidden rice caches; the bunkers were destroyed and the rice was sent to 1st Marines. 12 SFD mines were found, one of which was tripped, resulting in 2 USMC WIA's (medevaced) from F Company.

At 280110H, F Company received 20 rounds of 82mm mortar fire from BT 074632 resulting in 5 USMC KIA and 15 USMC WIA (medevaced); counter mortar fire and 106mm RR were used to suppress the enemy mortar fire. Found and destroyed 3 AP mines in the vicinity of BT 059628.

At 110730H, F Company, 2d Battalion, 1st Marines chopped OPCON to BLT 2/26. At approximately 110745H, F Company, 2/1 engaged 2 NVA at BT 103650 resulting in 1 NVA KIA (c) and the capture of 1 AK-47 and an NVA pack. At 110730H, F and H Companies were helilifted into the "Horseshoe Lake" area at BT 104635; E Company was helilifted to the vicinity of BT 094643, while G Company moved over land to the vicinity of BT 092633. 2 SFD's were found and destroyed by H Company. G Company set off an SFD resulting in 1 USMC WIA (medevaced). Also found in the operational area on 11 November were 42 bunkers, 2 tunnels, 1 105mm round and 2 60mm rounds all of which were destroyed.

At 120800H, F Company, 2/1 chopped back to the OPCON of 2d Battalion, 1st Marines. In the vicinity of BT 075647 a tank detonated a mine resulting in 5 USMC WIA (medevaced). Also on 12 November, BLT 2/26 units in the "Horseshoe Lake" area found 1775 pounds of rice, 18 bunkers, 9 SFD's and 5 dud artillery rounds; the rice was shipped to 1st Marines CP and the ordnance destroyed.

BLT 2/26, while continuing to search in the "Horseshoe Lake" area on 13 November, found 250 pounds of rice, 6 bunkers, 1 bolt action rifle, 2 dud artillery rounds and SFD's of which 3 were tripped resulting in 3 USMC WIA (medevaced). Also found were various documents which were forwarded to 1st Marines S-2.

On 14 November, BLT 2/26 found 1660 pounds of rice, 3 artillery rounds, and 7 SFD's of which 1 was tripped resulting in 1 USMC KIA and 1 USMC WIA (medevaced). At 142110H, an E Company ambush killed 1 VC/NVA and captured 1 wounded enemy; 1 AK-47 and grenades were captured. The POW proved to be a Lieutenant Company Commander of a Sapper Company.

At 151130H, while E Company was searching the area of the previous night's ambush, they encountered 2 VC/NVA resulting in 2 VC/NVA KIA (c) and the capture of 1 M-16 rifle with 4 magazines, 1 AK-47 with 1 magazine and uniforms with 2 wallets containing documents. Elements of G Company while moving to an ambush site came under Machine Gun, AK-47 and M-79 fire resulting in 1 USMC WIA (medevaced); G Company returned fire with small arms, artillery mission and directed 2 Huey Gunship attacks on suspected enemy positions with unknown results.

On 16 November, F and H Companies were helilifted to the vicinity of Cam Sa I in the vicinity of BT 079648. The Cordon and Search resulted in the finding of 5 SFD's and 113 detainees out of 383 screened; the detainees were taken to 2/1 CP for further interrogation. Company F suffered 6 USMC WIA (medevaced) from small arms fire while airborne at 161600H enroute from Cam Sa to the 3rd AmTrac Battalion position. Also on 16 November, E and G Companies were helilifted from their night ambush position to 3rd AmTracs followed by F and H Companies after securing the cordon.

## 12. Results.

### a. Casualties.

|              |    |
|--------------|----|
| Friendly KIA | 9  |
| Friendly WIA | 39 |

|               |    |
|---------------|----|
| Enemy KIA     | 5  |
| Enemy KBA     | 15 |
| Enemy WIA/POW | 2  |

- b. Civilians Screened. 1839
- c. Civilians Detained. 238
- d. Enemy Weapons and Equipment Captured or Destroyed.

|                 |    |
|-----------------|----|
| SFD's           | 98 |
| AK-47's         | 2  |
| 7.62 Carbine    | 1  |
| M-16            | 1  |
| AK-47 Magazines | 6  |
| M-16 Magazines  | 24 |

Assorted 782 gear and uniforms.

- e. Bunkers Destroyed. 94
- f. Rice Captured. 10,970 pounds
- g. Dud Artillery Rounds Destroyed.

13. Administrative Matters. Administrative plans were adequate and no administrative problems were encountered. No new problems in logistics, maintenance, transportation and communications were encountered.

14. Special Equipment and Techniques. No special equipment or techniques were used during the operation.

15. Commanders Analysis. The landing of the BLT in the 2d Bn, 1st Marines A.O. resulted in a marked decrease of enemy activity. The tactic of employing BLT 2/26 in a constant series of cordon operations either independently or in conjunction with the resident Battalion (2d Bn, 1st Marines), seized all initiative from the enemy. The repeated cordoning of villages and screening of populations resulted in numerous detainees, a factor that tore at the heart of the VC infrastructure. The type of mission initially assigned is believed for an amphibious force in the environment south of Da Nang. It is easier to achieve the essential element of surprise when operating from a sea base, since a helilifted force can be staged out of sight of the enemy. From this factor accrues the advantages of entrapping more enemy, to include infrastructure, within a cordon and also denying the enemy the opportunity to install the large number of SFD's routinely encountered by in-country units.

UNCLASSIFIED

## PART II

NARRATIVE SUMMARY

At the beginning of December, the BLT was still engaged in Operation MEADE RIVER under the operational control of the 1st Marines. Several subordinate units of the BLT were OPCON to units within 1st Marines. However, by 071600H, all units were chopped back to BLT 2/26 and by 071800H the BLT chopped from the 1st Marine Division and all units returned to the rear position at FLC (Red Beach).

The BLT was now under the operational control of CTG 79.4, and on 08 December commenced embarking aboard ARG shipping. Aboard ship, all units conducted limited rehabilitation and training of its personnel and equipment.

At 0800H on 15 December, the BLT commenced Operation VALIANT HUNT (See OP ORD 120D-68 in Part IV). The four rifle companies, 81mm Mortar Plt., W Battery, 106mm RR Plt., and HQ personnel with the Alfa Command Group landed by helicopter in the vicinity of BT 1451 and BT 1551 (See Ref (d)), and established a cordon around the villages of An Los and Thi Lai. B Battery, 1/13, with elements of the Engineer Plt., and S.P. Plt., landed by surface craft in the vicinity of BT 208575 and established a Fire Support Base. An internal cordon was planned to separate the two villages; but, due to the small number of Vietnamese civilians found in the area, it was cancelled. The company involved was then free to conduct security patrols throughout the A.O..

The BLT helped establish a screening center in the cordon. U.S. Army Civic Action personnel, along with National Police Field Forces, a Provincial Reconnaissance Unit, and elements of C.I.T. and I.T.T. conducted the screening of civilian personnel while the BLT provided security.

By late on the 23rd, the search of the area and screening of personnel was complete and some BLT units started re-embarking aboard the ships. By the 24th all units were lifted out of the cordon area and returned to the ships. However, the F.S.B. was maintained and all units there remained ashore.

For the next two days the BLT enjoyed Christmas aboard ship and the units conducted a limited rehabilitation of personnel and equipment.

At 0730H on 27 December, the BLT again landed in the A.O. (See FRAG ORD 75-68 in Part IV). The four rifle companies, 81mm Mortar Plt., 106mm RR Plt., Engr Plt., W Battery, and HQ personnel with the Alfa Command Group conducted an all helicopter landing in the vicinity of BT 1549 and BT 1649 and established a cordon around the villages of Ap Bon (2) and Hien Luong. As planned, the Vietnamese civilians in Ap Bon (2) were moved into Hien Luong and the cordon was tightened in order to free one company for security patrols throughout the A.O..

Again, all civilians were moved to a central screening center where U.S. Army C.A. personnel, N.P.F.F.'s, PRU's, C.I.T., and I.T.T. personnel conducted the screening. The civilians' diet was augmented by rice caches discovered by Marines while searching the villages.

On 31 December, Operation VALIANT HUNT was still in progress with a scheduled termination date of 05 January, 1969.

UNCLASSIFIED

## PART III

LISTING OF SIGNIFICANT EVENTS1. MISSION/OPERATIONSa. Major Operations

(1) 1-7 December 1968

(a) MEADE RIVER (Continuation from November, see After Action Report, Operation MEADE RIVER in PART IV).

(b) Quang Nam Province, Da Nang area.

(2) 15-31 December 1968

(a) VALIANT HUNT (See Operation Orders 12D-68 in PART IV).

(b) Quang Tin and Quang Nam Province, Da Nang area.

b. Command Relations

(1) During the period of 1-7 December, BLT 2/26 was under the OPCON of the 1st Marines. The Command Headquarters remained with the BLT in the vicinity of BT 0361.

(2) During the period 8-31 December, the BLT was under the operational control of SLF ALFA. The BLT Headquarters was established aboard the USS OKINAWA (LPH-3). Operations conducted during the period utilized ARG shipping.

c. Combat Missions Assigned(1) MEADE RIVER

(a) 1-7 December

(1) Establish cordon around the objective area.

(2) Search and clear villages and adjacent area to destroy enemy forces, caches, material, and installations.

(3) Capture VC infrastructure within the objective area.

(2) VALIANT HUNT

(a) 15-31 December

(1) Establish cordon around the objective areas. (See OP ORD 12OD-68 and FRAG. ORD 75-68.

(2) Assist in population screening and searches for caches.

DECLASSIFIED  
Enclosure (1)

- (3) Conduct patrols and ambushes as necessary to protect the integrity of the cordon.

d. Command Control

- (1) During the period 1-7 December the BLT C.P. was located at BT 038613. Due to the size of the objective area, communications with most sub-ordinate units was by radio. The C.P. was only accessible by walking or OTTER type tracked vehicles. The BLT Rear was located at FLC (Red Beach), Da Nang. Daily admin runs were made to the C.P., and radio communications were maintained.
- (2) During the period 8-31 December, the BLT was aboard ARG shipping. The Headquarters staff and all company offices were located aboard the LPH-3 in order to facilitate administrative matters. During operations ashore, the C.P. maintained tactical communications utilizing TAC/LOG radio nets. Administrative runs from ship-to-shore were made daily utilizing helos. Btry B, 1st Bn, 13th Marines, 2nd Plt. (Rein), H&S Co, 3rd SP Bn, and 1st Plt (Rein), Co A, 5th Am Trac Bn, landed at Blue Beach (See OP ORD 120D-68 in PART IV) and established F.S.B. and B.S.A.

e. Organic Operations

During the period, the BLT conducted (1) 51 day light patrols, (2) 96 night time LP's, and (3) 90 night time patrol/ambushes.

f. NBC Warfare

During the period 1-30 December there were no NBC type devices used by or against the BLT.

2. INTELLIGENCE

a. Situation at the beginning of the reporting period.

- (1) Operation MEADE RIVER At the beginning of the reporting period, BLT 2/26 was concluding Operation MEADE RIVER.

(a) Intelligence provided by the 1st Marine Division indicated the presence of the V25Bn, R20 Bn, U/I elements of the 68B Regt, A82 Bn, and the Q15 IF Co in and around the operating area. The interrogation of the captured DIAN BAN District Economic Chief confirmed the presence of the R20 BN as being located within the cordon area. The above mentioned VCI was captured by E Company.

(b) During Operation MEADE RIVER, VC/NVA forces attempted to evade BLT 2/26 forces and made numerous attempts to pass through the cordon. These attempts were successfully halted by ambushes and LP's. When engaged by friendly fires, the enemy would break contact immediately. Enemy movement was constantly hindered by daily tightening of the cordon and by the use of flareship illumination during the hours of darkness.

(c) Although exact figures are unavailable, it was determined that the VC control over the civilian populace in the MEADE RIVER area was seriously injured. Counterintelligence officials indicated that the number of VC infrastructure captured as a result of the intensive screening of the detainees was "very high".

b. Operation VALIANT HUNT

(1) Operation VALIANT HUNT was conducted within the known operating area of the Q80 and the Q81 LF companies, with a combined strength of 150 men. The last known locations of the 36th Regt (AT 9656) and the 38th LF/NVA Regt (BT 0254), placed them in a position from which to reinforce the Q80 and Q81 Local Force Company.

(b) During Phase I and the majority of Phase II of VALIANT HUNT no major ground contact was established with organized enemy troops. The enemy did, however, engage BLT 2/26 with sniper fire on a limited basis. When engaged by BLT 2/26 the enemy made every attempt to break contact as soon as possible.

(c) Although Phase II of Operation VALIANT HUNT is still in progress, the effect of this operation will be most readily felt by the local VC government within the operating area. A large number of VC infrastructure were captured as a result of the combined efforts of BLT 2/26, National Police Field Force (NPFF) and both QUANG NAM and QUANG TIN Province officials.

c. Enemy initiated incidents During both the latter portion of MEADE RIVER and VALIANT HUNT the enemy engaged BLT 2/26 primarily with harrassing small arms fire. On one occasion during Operation VALIANT HUNT, F Company received 6 rounds of 60mm mortar fire.

d. Enemy Losses

MEADE RIVER

VALIANT HUNT

(1) Casualties

|                    |    |       |
|--------------------|----|-------|
| NVA KIA            | 7  | 11    |
| VC KIA             | 15 | 20    |
| PW's               | 1  | 2     |
| CHIEU HOI          |    | 1     |
| DETAINEES          |    | 3,387 |
| VC INFRASTRUCTURE  |    | 23    |
| VC CIVIL DEFENDERS |    | 18    |
| VCS                |    | 6     |

(2) Captured Equipment

1 - AK-47  
 1 - US M2 Carbine  
 2 - SKS Carbine  
 1 - Mosin-Nagant Carbine  
 9,301 Pounds of rice  
 9 - CHIGOM Grenades  
 4 - Box Mines

UNCLASSIFIED

Enclosure (1)

250 - Round Linked 7.62  
 2 - Claymore mines  
 2 - M79 Rounds  
 1 - 106 Round  
 1 - 60mm Mortar Round  
 4 - NVA Packs  
 2 - Cartridge Belts  
 1 - Canteen  
 35 - Pounds Medical Supplies  
 3 - Communist Flags  
 5 - Sewing Machines  
 Assorted Documents  
 Assorted Civilian and Military Clothing

(3) Destroyed Enemy Positions

400 Meters of Trenchline  
 14 Bunkers  
 12 Fighting holes  
 7 Tunnels

- e. Enemy Trends During Operation MEADE RIVER it was noted that with each additional day, the entrapped enemy forces would increase his efforts to escape through the cordon, in small groups.
- f. Weather Conditions During the month of December weather conditions favored friendly operations. The monsoon rains did not appear as anticipated, and therefore had no adverse effect on friendly operations.

3. SEQUENTIAL LISTING OF SIGNIFICANT EVENTS

- 01 Dec. At 0700H, Co H found a VC hiding in a tunnel.
- 01 Dec. At 0700H, Co F spotted 6 people running from them and opened fire resulting in 6 civilians medevaced.
- 01 Dec. At 1700H, Co G spotted 2 VC sitting on top of a bunker and fired a 106MM RR resulting in 2 VC KIA.
- 02 Dec. At 0010H the BLT CP observed 2 VC and took them under fire resulting in 1 VC KIA and the capture of 2 Chi Com grenades and some documents.
- 02 Dec. At 0930H, Co G took 2 VC under fire resulting in 2 VC KIA.
- 02 Dec. At 2050H, Co H called a 81MM mortar mission on 2 VC resulting in 1 VC KIA.
- 02 Dec. At 2055H, a Co H ambush took 6 VC under fire resulting in 3 VC KIA.
- 03 Dec. At 1150H, Co F captured 1 NVA who was slightly wounded.
- 03 Dec. At 1530H, a Co F patrol found a trench line 2'X3'X400 meters. It contained a VC body and miscellaneous enemy 782 gear and documents.

~~SECRET~~

- 03 Dec. At 2030H, a Co G squad leader threw a grenade which fell short resulting in 1 USMC medevac.
- 04 Dec. At 1120H, Co G took 1 VC under fire resulting in 1 VC KIA.
- 04 Dec. At 1120H, Co H while sweeping an area after a fire fight found 9 NVA KIA's.
- 04 Dec. At 1500H, Co H received sniper fire. Returned fire resulting in 1 VC KIA.
- 04 Dec. At 1655H, Co F found 2 partially uncovered graves in the vicinity of BT 026607. One contained a body with a bullet hole in the head the other had shrapnel wounds in the stomach. The graves were recovered.
- 05 Dec. At 1330H, Co G found 12 one man fighting holes, 4 bunkers, and 3 mines. Bunkers were 5'X8'X4' made of bamboo and dirt. The mines were boxes 5'X5'X12" packed with TNT. All items were blown in place.
- 05 Dec. At 1530H, Co H found five boxes of documents and one electrical mine. The documents were turned over to 1st Marines and the mine was blown in place.
- 06 Dec. At 0945H, Co G found one decapitated NVA in the vicinity of BT 022602 believed to have been killed in action that took place on the 5th.
- 06 Dec. At 2200H, Co F received fire from 2 VC at BT 035601. Returned fire with small arms resulting in 1 VC KIA and 1 AK-47 captured.
- 07 Dec. At 0830H, Co F observed 1 NVA approaching from the west. Took him under fire with M-16 resulting in 1 NVA KIA and 1 M-1 carbine, 2 Chi-Com grenades and 1 cartridge belt captured.
- 07 Dec. At 1535H, Co G in the vicinity of BT 024599 set off a box type mine resulting in 1 USMC KIA and 6 USMC WIA.
- 08 Dec. to 14 Dec BLT 2/26 embarked aboard ARG/SIF ships, conducting rehabilitation and training in preparation for future operations.
- 15 Dec. At 1000H, Co F found 2 bunkers at BT 149528. Destroyed them with demo.
- 15 Dec. At 1250H, a gunship working in support of Co F wounded 1 civilian who was medevaced to the USS Okinawa.
- 15 Dec. At 1407H, Co E in the vicinity of BT 143509 detained 39 VN. Will be forwarded to the screening center.
- 15 Dec. At 1615H, Co E picked up 1 VC suspect who had no I.D. Forwarded to S-2 for questioning.
- 16 Dec. At 1030HH Co H in the vicinity of BT 146514 picked up 40 VN civilians, 150lbs of rice and some documents. Civilians and rice were sent to screening center. The documents went to S-2.

UNCLASSIFIED

~~SECRET~~  
Enclosure (1)

- 16 Dec. At 1110H, Co H found 14 VN hiding in bunkers located at BT 145516. People were escorted to collection point.
- 16 Dec. 1210H, Co H picked up 3 VN in a hut located at BT 146516. People were escorted to the collection point.
- 16 Dec. At 1235H, Co H found miscellaneous documents in 2 bunkers made of brick and bamboo located at BT 145515. Destroyed bunkers with demo and forwarded the documents to S-2.
- 17 Dec. At 2145H, Co H located at BT 146514, had a man slip and fall while throwing a grenade. The grenade detonated wounding the individual who was medevaced.
- 17 Dec. At 2345H, Co H received fire from an AK-47 and a light machine gun. Called a mortar mission; good target coverage. Firing ceased.
- 18 Dec. At 0930H, Co F discovered 1 VN male body at BT 143517 who appeared to have died of shrapnel wounds.
- 19 Dec. At 0730H, Co G found 1 butterfly bomb with anti-disturbance device at BT 152521. Bomb was destroyed in place.
- 19 Dec. At 1145H, Co H conducting a sweep in the vicinity of BT 131505, took 7 VC under fire resulting in 1 VC KIA.
- 19 Dec. At 1620H, Co E observed 1 VC running at the edge of river. Opened fire with machine gun resulting in 1 VC KIA(c).
- 19 Dec. At 1700H, Co H spotted VC running away from their position. Opened fire on him wounding him in the foot. Evacuated to the BLT S-2 for further processing.
- 19 Dec. At 1915H, Co G observed 2 VC in the water at BT 171511. Took under fire resulting in 1 VC KIA.
- 19 Dec. At 1915H, Co G spotted 1 VC in a boat. Opened fire sinking the boat and killing the VC. 1 VC KIA.
- 19 Dec. At 2000H, a Co H ambush enroute to its ambush site had grenades thrown at them by an estimated 10 VC. Returned fire and the VC fled. Had no casualties.
- 19 Dec. At 2330H, Co E spotted 1 VC in river and opened fire with M-79's resulting in 1 VC KIA.
- 20 Dec. At 1400H, Co G found 36 bunkers, 4 spider holes at BT 1657. Bunkers were family type with 12' L shaped tunnels. Destroyed with demolitions.
- 20 Dec. At 1456H, Co G found 1 VN male in a hut with a leg wound. Turned him over to ITT.

UNCLASSIFIED

SECRET  
Enclosure (1)

SECRET

- 20 Dec. At 1830H, Co F spotted 3 VC wearing black clothing and carrying weapons entering a ville at BT 171518. Co G sent 2 squads to the ville to engage the enemy. Results were 1 VC KIA, 1 cartridge belt and 1 Chi-Com grenade captured.
- 20 Dec. At 1830H, Co F spotted 3 armed men in black clothing. Engaged them with 2 squads resulting in 1 NVA KIA (c). Co E supporting Co F by fire observed 3 more NVA KIA. All clothing, arms and equipment forwarded to Co F's CP for further evacuation.
- 20 Dec. At 1900H, Flareship reported 3 bodies previously reported are still in place and there are 3 more bodies in the same area, total 6 NVA KIA.
- 21 Dec. At 0650H, a Co H ambush opened fire on 4 VC. VC ducked out of sight. Upon checking area found blood trails leading into a swamp.
- 21 Dec. At 0800H, Co H found blood trails and many foot prints leading west at BT 141514.
- 21 Dec. At 0800H, Co G found a tunnel 4'X4'X5' with 1 SKS rifle, 4 clips of ammo, 1 Chi-Com grenade, documents and a small amount of medicine. Destroyed tunnel with demo.
- 21 Dec. At 0830H, Co G found 31 family bunkers, made of bamboo also found 2 dud 105's and 1 155 round. Destroyed all with demo.
- 21 Dec. At 1250H, Co H spotted approx 12 VC/NVA. Opened fire wounding one. Observed him being carried into a bunker. Called Arty mission on bunker.
- 21 Dec. At 1700H Co F spotted 2 VC women. VC fired and Co F returned fire resulting in 1 VC KIA and 3 detainees captured.
- 21 Dec. At 1730H Co E found 2 rusty 155 rounds at BT 166520. Destroyed with demo.
- 21 Dec. At 1900H, ITT reported that 16 VC still remain in ville. Checked all bunkers with negative results.
- 22 Dec. At 1100H, Co G found 1 male killed by shrapnel, in a fresh grave. 1 VC KIA.
- 22 Dec. At 1400H, Co E found a fresh grave 50 meters from ambush site of 19 Dec. VC killed by claymore. 1 VC KIA.
- 22 Dec. At 1700H, Co H while calling in arty mission observed 1 VC WIA entering water. 81's and small arms were fired resulting in 1 VC KIA.
- 23 Dec. At 2025H, a Co H ambush spotted 8-10 VN, took them under fire with small arms and claymore. VC returned fire with AK-47. Reloaded ambush site.

11

UNCLASSIFIED  
Enclosure (1)

23 Dec. At 2135H, a Co E ambush received ordnance of an undetermined caliber. Shrapnel hit 1 man who was treated by corpsman. 1 USMC WIA.

SPECIAL ENTRY: Elements of BLT 2/26 were reembarked on ARG shipping on 24 Dec. Landed again on 27 Dec., a continuation of Operation VALIANT HUNT.

27 Dec. At 1430H, Co F found 1 Chi-Com grenade wrapped in cloth at BT 170488. Turned it over to S-2.

27 Dec. At 2020H, Co G heard a bell ringing. May have been a warning system. Alerted troops in the area.

28 Dec. At 0940H, Co F heard sniper shooting at fixed wing. Called arty mission and sniper fire ceased.

28 Dec. At 1210H, Co H located at BT 159482 received sniper fire; returned fire with small arms, also called 81MM mortar mission. Results, 2 female WIA medevaced.

28 Dec. At 1345H, Co E found a bunker 8'X3'X4', made of bamboo. A tunnel ran 9' from the bunker. It contained 1 civilian radio and 1 M-26 grenade. Bunker was destroyed with demo.

28 Dec. At 2200H, Co F heard movement in ville located at BT 168494. Opened fire with M-16's and M-26 resulting in 1 VC KIA (c) and ~~1 Chi-Com grenade captured.~~

28 Dec. At 2035H, Co F observed 1 person moving along with some cows. Sent 2 men to investigate and discovered 15 people in a hut. Transported them to the collection point.

28 Dec. At 2050H, Co E observed an individual moving toward one of their ambush sites. Employed M-26's resulting in the capture of one VCS. Transported suspect to CIT/ITT.

29 Dec. At 0640H, Co F detained 3 individuals, a fifty year old man, 15 year old boy and a 16 year old girl. All three were sent to collection point.

29 Dec. At 0645H Co F had a VC walk into their lines. When told to halt he started to run. Co F opened fire resulting in 1 VC KIA(c).

29 Dec. At 1120H, Co G discovered a spider hole with a small tunnel containing 1 Chi-Com grenade at BT 165484. Destroyed in place.

29 Dec. At 1130H, VC suspect captured last night, led elements of Co E to 3 Vats which contained approximately 250lbs of rice.

29 Dec. At 1200H, Co E found a camouflaged L shaped tunnel 1 Meter wide, 3 meters long, 3 meters deep. Made of bamboo and dirt. Inside were 4 VCS, ages 20 to 30. They wore blue shirts, dark shorts, but had no weapons. Delivered to collection point.

- 29 Dec. At 1230H Co E found 1 L shaped tunnel 5' long which led to a bunker made of bamboo and dirt. There were 3 VCS hiding in the bunker. The bunker was destroyed and the 3 individuals forwarded to the collection point.
- 29 Dec. At 1400H Co E found an L shaped tunnel which contained 1 male who was sent to the collection point. The tunnel was destroyed with demo.
- 29 Dec. At 1450H Co H while searching a hut found that it had a false floor. Under the floor they discovered 800lbs of grain. The grain was forwarded to the collection point.
- 29 Dec. At 1950H Co E apprehended 1 VCS who had no weapon. He had a certificate from the Central Bank of China for 820 piastres. VCS was taken to the collection point.
- 29 Dec. At 2000H Co H fired on movement heard on a trail at BT 155525 and received small arms fire in return. Swept area and found 1 male VC estimated to be 40 years old. Sent to C.I.T..
- 30 Dec. At 0655H a Co H ambush spotted a man jump up and start to run away 25 meters from their position. He was told to halt and did not. The ambush opened fire resulting in 1 VC KIA (e).
- 30 Dec. At 1010H the National Police found an AK-47 with 3 rounds hidden in some bamboo. They kept weapon.
- 30 Dec. At 1100H Co F found 10 gallons of oil buried under the floor of a hut. The hut also contained the following items: clothes, documents, 1 NVA cartridge belt, 1 bottle of penicillin, 1 lighter with a 504 insignia. The oil was destroyed and the remaining equipment sent to C.I.T..
- 30 Dec. At 1230H Co E found a tunnel which contained a box of medical supplies, 1 cartridge belt, 1 canteen and parts of a gas mask. All equipment taken to S-2.
- 30 Dec. At 1230H BLT CP discovered two 250lb caches of rice at BT 167496 and an additional 200lbs at BT 167495. They also found one 5 gallon of gas at BT 167494. The gas was destroyed and the rice sent to the collection point.
- 31 Dec. At 1030H the PRU's found a 3 layer tunnel complex which contained the following: 2 women, 3 men, and a 15 year old boy, medical supplies, documents, 5 sewing machines and clothing. People and items were sent to C.I.T..
- 31 Dec. At 1030H Co E while searching bunkers found 2 claymores and 2 M-79 rounds. Destroyed them in place.

- 31 Dec. At 1100H BLT CP found a female Vietnamese hiding in a bunker in the vicinity of BT 160497. She had an I.D. and some documents. All were turned over to C.I.T..
- 31 Dec. At 1150H Co F found 1500lbs of rice buried in vats in the vicinity of BT 170489. Sent rice to C.I.T..
- 31 Dec. At 1300H Co F found a rice cache of approximately 1700lbs, was found in the vicinity of BT 168491. Rice was turned over to C.I.T..
- 31 Dec. At 1520H Co F found assorted documents and a 120lb bag of rice in a 6'x8'x4' bunker. The documents and rice were turned over to BLT S-2.
- 31 Dec. At 1610H Co F found a 15 year old girl with a high fever and pains. With her were 2 women, and 3 children. The girl was medevaced and the others sent to C.I.T..

#### 4. FIRE SUPPORT

##### a. B Btry, 1st Bn, 13th Marines (105mm)

Note: During the period 1-7 December the Btry was deployed as a provisional rifle company.

##### (1) Missions fired for the period are as follows:

113 H&I's  
53 HE destruction  
17 Illumination

##### (2) Of the above, there were 70 observed missions fired.

##### (3) Total rounds expended are as follows:

3417 H.E.  
287 W.P.  
467 Illumination

##### b. W Btry, 1st Bn, 12th Marines

Note: During the period 1-7 December the Btry was deployed as a provisional rifle company.

##### (1) Missions fired for the period are as follows:

68 H&I's  
25 H.E. destruction  
14 Illumination

##### (2) Of the above, there were 39 observed missions fired.

##### (3) Total rounds expended are as follows:

UNCLASSIFIED

1803 H.E.  
167 W.P.  
244 Illumination

c. Naval Gun Fire

(1) Ships that were available:

|                     |                |
|---------------------|----------------|
| Du Pont DD 941      | 15-16 December |
| Goldsborough DDG 20 | 15-24 December |
| Davis DD 937        | 27-31 December |

(2) Missions fired for the period are as follows:

5 Prep Fire for a total of 262 rnds.  
171 H&I for a total of 2120 rnds.  
4 TOT for a total of 36 rnds.  
28 Call Fires for a total of 954 rnds.  
4 Illumination for a total of 35 rnds.

(3) Of the above, there were 32 observed missions.

d. 81mm Mortar Platoon (Organic)

(1) Missions fired during the period are as follows:

58 H.E. destruction  
34 Illumination  
49 W.P.

(2) All of the above missions were observed fires.

(3) Total rounds expended are as follows:

1077 H.E.  
321 Illumination  
119 W.P.

5. SUPPORT

a. Units

- (1) 1st MAW
- (2) HMM-362 (SLF "A")
- (3) 7th Air Force

b. Missions

- (1) Resupply - 178
- (2) Close Air Support
  - (a) Missions - 8

UNCLASSIFIED

Enclosure (1)

UNCLASSIFIED

(b) Ordnance - Napalm / 7.62mm (AC-47)

- (3) TPQ's - None
- (4) Flare Support - 6 (AC-47)
- (5) Observation - 25
- (6) MED-EVAC - 3 Emergency, 10 Priority.

c. Significant Events

BLT 2/26 made two BLT size landings during the month. Both were supported entirely by HMM - 362. It should be noted that although the squadron operated without gunship support, no missions were aborted even though enemy groundfire was encountered on many occasions. 7th Air Force AC - 47's also rendered timely and effective support during the hours of darkness.

6. PERSONNEL

| a. <u>Combat Losses</u>          | USMC     |          | USN      |          |
|----------------------------------|----------|----------|----------|----------|
|                                  | OFFICERS | ENLISTED | OFFICERS | ENLISTED |
| WIA                              | 0        | 14       | 0        | 1        |
| KIA                              | 0        | 0        | 0        | 0        |
| MIA                              | 0        | 0        | 0        | 0        |
| b. <u>NON-COMBAT LOSSES</u>      |          |          |          |          |
| Killed                           | 0        | 0        | 0        | 0        |
| Injured                          | 3        | 45       | 0        | 4        |
| c. <u>WIA's returned to duty</u> |          |          |          |          |

Number of personnel wounded and returned to duty with the BLT during the period. Ten (10).

d. R&R Trips---128e. Personnel Rotated (PCS)---180f. Replacements Received--- Officers-8; Enlisted-2147. ADMINISTRATIONa. Personnel Accounting

The BLT is composed of four (4) Rifle Companies, one (1) E&S Company and two (2) batteries. Each unit is capable of performing internal administration and each is assigned its own reporting code. While at sea all Company and Battery offices were located aboard the USS Okinawa.

UNCLASSIFIED

8. LOGISTICSa. Supply/Resupply

(1) During the period 1-8 December, the supply effort was directed toward preparation for reembarkation upon completion of Operation MEADE RIVER and resupply of the tactical elements involved in the operation. Resupply of the battalion for the operation required establishment of an LSA on Hill 55. The LSA drew Classes I, II and V from the 1st Marines and arranged air/ground transportation of supplies to all units. The battalion rear located at Red Beach provided certain Class II items and medical supplies which were delivered directly to the field by ground transportation.

(2) Supplies for the first phase of Operation VALIANT HUNT were drawn from the Basic Allowance aboard the ships and subsequent resupplies of Class V were taken from the LForm of the USS Okinawa and the USS Duluth. Replacement of LForm was accomplished by ammunition technicians from the ship traveling to Da Nang to order and stage gear at Tien Sha Ramp for subsequent transport to the ships. Initially an LCU was used, but it proved insufficient because of the time for transport so a new BA was ordered by message and staged at Tien Sha for pick up by the AKA. The BA was then sent to the LPD where it was staged and used for resupply.

For the second phase of the Operation a day of ammunition was preloaded and sent ashore for a BSA established in the vicinity of Blue Beach. The BSA was further supplied with class V items ordered as LForm replacement which arrived by LCU from Tien Sha and were delivered to the BSA. This prevented further depletion of the LForm and permitted better utilization of aircraft. Items other than Class I and V were resupplied from OP stocks aboard ship and ashore by helicopter to the BSA for further distribution by helicopter on regular resupply runs. The LForm replacement has been ordered and will be staged and ready for pick up after the operation.

General resupply of the BLT has been a problem because of the number of unfilled back requisitions and because of coordination for transportation. Individual equipment was and still is in short supply. At present the equivalent to one company of replacements is without gas masks and body armor. Every effort is being made to walk through a priority O2 requisition to fill this shortage.

b. Food/Water

(1) During the period 1-8 December, the tactical elements of the battalion subsisted on "C" rations. The battalion rear at Red Beach subsisted at the FIC messhall. All units subsisted aboard ship during period 9-14 December. During period 15-24 December, tactical elements subsisted on "C" rations supplemented by one hot meal supplied from the ship and delivered by helicopter. The BLT, minus artillery, was aboard ship during period 24-26 December. During period 27-31 December, tactical elements of the BLT subsisted on "C" rations. Hot meals were provided each unit on a round robin basis.

(2) Water. Period 1-8 December, tactical elements utilized natural sources and received water resupply by helicopter. During period 15-31 December, tactical units ashore utilized available natural sources and because of a critical shortage of water cans received limited water resupply by helicopter.

UNCLASSIFIED

SECRET  
Enclosure (1)

~~SECRET~~

M107 water trailers were shuttled between beach and ship to supply BSA and artillery position.

c. Maintenance.

During period 1-8 December, normal 2d and 3rd echelon maintenance were accomplished at Red Beach prior to reembarkation. Certain items requiring 3rd echelon maintenance were left at 1st FSR. During period 15-31 December limited 2d echelon maintenance was performed aboard ship and ashore. Items requiring 3rd echelon maintenance were evacuated to 1st FSR and returned upon completion of repairs. Requisitions for 2d echelon maintenance repair parts for deadlined equipment have been initiated but have not been filled. At present all on hand flamethrowers have been turned in for repair and safety checks prior to the next operation but they have been set aside until completion of BLT 2/26 rehab. These items will not be available for the next operation.

9. NEW TECHNIQUES

During the reporting period there were no new combat techniques or trends developed by the BLT.

10. Training

- (1) Due to the continual tactical deployment of the BLT, the emphasis was placed on on-the-job-training. Operation VALIANT HUNT was the first cordon operation where the BLT was totally responsible for the establishment of the cordon, the search/sweep of the area, and the collection of local people to turn over to the screening center.
- (2) Approximately 200 new personnel were given an indoctrination lecture before they were sent to the field.

11. Civic Action/Psychological Warfare

- (1) BJU, Detachment Foxtrot was assigned to CTG 79.4 and subsequently to BLT 2/26 to provide psyops assistance throughout Operation Valiant Hunt. BJU psyops capabilities consist of two ground loudhailer teams, one helo loudhailer team, and a leaflet preparation-dissemination team.
- (2) The detachment has provided the following psyops support for Operation Hunt:
  - a. One ground loudhailer, consisting of 1 Off/3 enl, was in-country with the Battalion at all times.
  - b. Remaining personnel were on stand-by.
- (3) Actions Conducted:
  - a. The ground loudhailer team has provided initial directions to Vietnamese civilian personnel in each ville via pre-recorded tapes and live broadcasts. In this way, the civ-

UNCLASSIFIED

~~SECRET~~  
Enclosure (1)

T

ilians were informed of the cordon's existence and that they must proceed to a central collection for interrogation.

- b. The team was also placed in charge of the Armed Propaganda Teams supplied by CORDS, Hoi An, to help ferret out any pockets of resistance that might be encountered during the sweep operations.
- c. The team further acted as an occasional liaison between the BLT and other units provided by CORDS. These units were: 1 Co. PFF's, 1 Provincial Reconnaissance Unit, 1 Medical Team, 1 Cultural Drama Team.
- d. The team broadcast general information tapes, JUSFAC news and entertainment tapes, Chieu Hoi, and Rewards tapes to the civilian personnel within the interrogation center.
- e. The team passed out Chieu Hoi and Rewards leaflets at the interrogation center and helped coordinate leaflet drops within the AOA.

## 12. Communications

### a. Radio

- (1) From 1-7 December during Operation Meade River, constant radio communications was maintained between the BLT and higher Headquarters, Rifle Companies, and Supporting Arms. The Tactical Air Control Party continued using UHF and VHF radio equipment in support of the BLT.
- (2) From 15-31 December, during Operation Valiant Hunt, constant radio communications was established and maintained between the Rifle Companies, Supporting Arms, attached units and to higher Headquarters ashore and afloat.
  - a. A TAC LOG net was established and maintained between the BLT ashore and the Amphibious Ready Group ships afloat.
  - b. A LOG/ADMIN net was established and maintained between the BLT ashore and afloat.
  - c. A BN TAC net was established and maintained between BLT units and higher Headquarters ashore and was monitored by the BLT Rear afloat.
  - d. The Tactical Air Control Party employed UHF, HF and VHF equipment in support of the BLT.

### b. Radio Relay

- (1) During Operation Meade River, the Radio Relay attachment maintained two AN/PCC-1 terminals of communication between the BLT Forward CP and 1st Marines CP.
- (2) During Operation Valiant Hunt, the AN/TRC-27 terminals were not employed.

## c. Wire

- (1) During Operation Meade River, a switching central with trunk lines and dial phones to FLC and units within the BLT Rear CP was maintained. Wire lines also were maintained within the Rear CP for perimeter defense. In the field, the Wire Section maintained a complete wire system between the forward CP, two (2) Provisional Companies, and Rifle Companies.
- (2) During Operation Valiant Hunt, a complete wire system was established and maintained between the Forward CP, attached units, and Rifle Companies ashore. Phones and wire lines were established and maintained to augment telephone communications aboard the USS OKINAWA (LPH-3) between the BLT units/sections.

## d. Maintenance/Supply

- (1) Forward and Rear maintenance facilities were established ashore and afloat for repair and maintenance of communications equipment within the BLT.

## e. Significant Events

- (1) During the periods from 8-15 December and 24-26 December, all communications equipment underwent a rehab which was performed by the Tech Shop personnel.

13. Medical/Dental Support

## a. Medical

- (1) During the period 1-7 December, all BAS Administration was handled by the section at Red Beach, Da Nang. All Sick Call was handled by our medical officers and four to six corpsman utilizing the BAS facilities of FLC, Da Nang.
- (2) During the period 8-31 December, the BAS was located aboard the USS OKINAWA (LPH-3) and utilized the ships facilities.
- (3) Currently, there are two medical officers with the unit - they were distributed so one was with the CP Rear, and the other was assigned within the Alfa Command Group. Corpsman were assigned as follows:

4-6 Rear BAS  
 8 Each Rifle Company  
 2 Bravo 1/13  
 3 Shore Party  
 1 Tanks  
 1 Anti-tanks  
 2 Recon

UNCLASSIFIED

2 Engineers  
2 Whiskey 1/12  
1 Dental  
1 Amtracs  
5 Medical Supply  
5 Admin Office  
1 Sanitation  
1 81's

(4) Casualties/injuries treated

- (a) Combat casualties - 34
- (b) Non-combat casualties - 26
- (c) Routine sick call - 256

B. Dental

During the period 01-07 December, our dental clinic was established and operated in conjunction with that of 1st MAW at Camp Books, Da Nang. From 08-31 December, facilities aboard USS Okinawa were utilized. Lt J.C. GABUS, DC, USNR, with the help of DTG3 PANTLIK manned the dental clinic for Battalion 2/26.

C. Significant Events

During the reporting period, DR. G.R. ROWAN, MC, USNR, was embarked aboard USS DULUTH during Operation Tight Jaw from 15-16 DEC 1968 when it transferred prisoners to North Viet Nam.

14. RELIGIOUS ACTIVITIES

a. Personnel

- (1) Chaplain assigned: Lt Jerry A. ZANDSTRA, CHC, USNR
- (2) Chaplain's assistant: L/Cpl Wayne ROBERTS

b. Services conducted:

| <u>Type</u>                  | <u>Number</u> | <u>Attendance</u> |
|------------------------------|---------------|-------------------|
| Sunday Worship - Protestant  | 5             | 161               |
| Sunday Mass - Catholic       | 4             | 132               |
| Weekday Worship - Protestant | 15            | 96                |
| Weekday Mass - Catholic      | 16            | 270               |
| Holy Communion - Protestant  | 11            | 293               |
| Memorial services            | 5             | 519               |
| Christams Eve services       | 1             | 172               |
| Christmas Day services       | 3             | 192               |
| New Year's Eve services      | 2             | 61                |

c. Facilities

- (1) A large Butler building was available for services while the BLT Rear was at FLC (Red Beach) Da Nang.

- [REDACTED]
- (2) In the field, any available spot was used.
  - (3) Ready room, forecastle, and hanger deck were available for services when aboard the USS Okinawa.

d. Significant Events

- (1) Received huge quantities of Christmas "goodies" for the troops. These packages and cards were promptly distributed to the various companies and units of the battalion.
- (2) Received excellent cooperation from the two chaplains aboard LPH-5 in arranging for memorial services. They proved helpful in getting memorial bulletins printed and in securing appropriate places for services.
- (3) Sponsored evening prayer sessions for the rear following the movies while at FLC. Four such services were held before we embarked with 179 persons attending.
- (4) Assisted twelve men in arranging and making priority status MARS calls.

UNCLASSIFIED

[REDACTED]  
Enclosure (1)

PART IV SUPPORTING DOCUMENTS

Tab A - 2/26: Combat After Action Report, Operation VALIANT HUNT

Tab B - 2/26: Combat After Action Report, Operation MEADE RIVER

Tab C - 2/26: Operation Order 120D-68. 12 Dec 1968.

Tab D - 2/26: Frag Order 75-68. 26 Dec 1968.

Tab E - Journal, 1 - 7 Dec; 15 - 31 Dec 68.

Tab F - Pictures

CTG 79.4  
0010-69

HEADQUARTERS  
Battalion Landing Team 2/26  
9th Marine Amphibious Brigade, FME  
FPO San Francisco, 96602

0011 69#1

3/HEL/jmm

1 January 1969

003A00169

From: Commanding Officer  
To: Commander, Task Force 79.4

Subj: Combat After Action Report, Operation VALIANT HUNT

Ref: (a) CTG 79.4 Operation Plan 120A-68  
(b) CTG 79.4 Frag Order 4-68  
(c) CTG 79.4 Frag Order 5-68  
(d) BLT 2/26 Operation Order 120D-68  
(e) MAP: Hoi An, Sheet 6640 I, Series L 7014, 1:50,000

1. Name of Operation. Operation VALIANT HUNT.
2. Dates/Location of Operation. The Operation took place during the period 15 December 1968 to 05 January 1969. The area of operation was within the following grid points of reference (e): BT 1453 to BT 1447 to BT 1847 to BT 1853.
3. Command Headquarters. During the operation the BLT C.P. was located in the following grid points of reference (e):  
15-24 December BT 152515  
25-26 December USS Okinawa (LPH-3)  
27Dec-05Jan BT 167491

4. Task Organization.

BLT 2/26

2ndBn, 26th Marines

H&S Co (-) (Rein)

Company E (Rein)

Company F (Rein)

Company G (-) (Rein)

Company H (Rein)

81mm Mortar Plt (-)

106mm RR Plt

LtCol SPARKS

LtCol SPARKS

1stLt HARRINGTON

2ndLt SMITH

Capt STOLZ

Capt SEAL

Capt FARMER

2ndLt GREEN

GySgt WHIDDEN

Tab A

Btry B, 1stBn, 13th Marines

Capt FRANZEN

Btry W, 1stBn, 12th Marines

1stLt SAUNDERS

1stPlt (-), Co A, 5th AmTrac Bn

GySgt MOSQUEDA

2nd Plt, Co C, 3rd Engr Bn

2ndLt MCPHERSON

Det, H&S Co, 3rd SP Bn

1stLt O'NEILL

3rdPlt (Rein), Co G, 2dBn, 26th Marines (SLF Reserve) SSgt EMMERICK

## 5. INTELLIGENCE

a. Known enemy units that are carried in current enemy order of battle (OOB) that were anticipated to be in the objective area were the Q81 Company and the Q80 Company. Both of these units are Local Force organizations. The Q81 Company strength is carried at 95 men and the Q80 Company strength is listed at 65. Also located within the operating area are two VC guerrilla platoons who are normally assigned the mission of hamlet security forces. The strength of these two platoons is unknown.

b. During Operation VALIANT HUNT the enemy forces encountered by 2/26 moved in small groups of 1-7 persons primarily. However, on 21 December elements of 2/26 observed 20 VC moving into bunkers in the vicinity of BT141523. These VC were engaged by supporting arms. The destruction of the enemy positions precluded a thorough check of the area. Interrogation of detainees revealed that 16 of the 20 VC were killed as a result of the friendly artillery fire. (NOTE: these KIA's are not reflected in 2/26's enemy KIA totals as there was no definite evidence indicating 16 KIA's.) On one other occasion, 19 December, a pilot spotted 15-20 VC wearing dark green uniforms in the vicinity of BT164514. BLT 2/26 received this information 2-3 hours after the sighting, therefore, no action was initiated by ground elements.

## 6. MISSION

- a. Establish a cordon surrounding the objective area.
- b. Assist, as required, in population screening and searching for caches.
- c. Conduct patrols and ambushes as necessary to protect the integrity of the cordon.

## 7. CONCEPT OF OPERATION

At H-Hour on 15 December, 1968, BLT 2/26 initially landed three cordon companies by helicopter assault. At L-Hour, Btry B, and such Engineer/Shore Party support that was required to establish an artillery fire support base, was landed by surface means. BLT 2/26 subsequently landed, by helo, one company (-) to establish an inner cordon. Lastly, Btry W was landed as an ON CALL wave and established a mortar fire support base in the immediate cordon area. All units, except for those at the fire support base, reembarked and spent the period 25 & 26 December aboard ship. At H-Hour on 27 December, BLT 2/26 landed

four infantry companies and necessary combat support units, by helicopter, to establish a new cordon position. They helped establish a screening center and provided security for same. All civilian personnel were moved to a central location enabling the cordon to be tightened thus releasing one company from its original cordon position in order to patrol throughout the AOA.

#### 8. EXECUTION

On 10 December, the BLT Staff Officers started planning for Operation VALIANT HUNT after receiving a warning order from higher headquarters. On 12 December the operation order was issued.

At 0800H on 15 December, BLT 2/26 commenced operations in the VALIANT HUNT AOA (See reference (b)). At 1000H, Co F destroyed two bunkers at BT149528. At 1407H, Co E sent 39 VN to the screening center that were found in the vicinity of BT143509. At 1615H, Co E picked up a VCS who had no I.D. card.

During the morning of 16 December; Co H, working in the vicinity of BT145515, found 57 civilians, 150lbs of rice, various documents, and bunkers. The bunkers were destroyed and the rice and documents turned over to S-2. The civilians were sent to the screening center.

During the day 17 December there was not much activity; however, at 2345H, Co H lines received fire from an AK-47 and light MG. A mortar mission was called and the firing ceased.

At 1145H on 19 December, Co H, while sweeping in the vicinity of BT131505, took 7 VC under fire and killed one. At 1620H the same day, Co E killed one VC with MG fire. At 1700H, Co H wounded a VC running from their position. He was turned over to S-2. At 1915H Co G observed two VC in the river at BT171511 and took them under fire, killing one. At the same time, Co G also spotted a VC in a boat. Opened fire on the boat, sinking it and killing the VC. At 2000H a Co H ambush enroute to its ambush site had grenades thrown at them by a estimated 10 VC. Co H returned fire and the VC fled. There were no casualties. At 1233H, Co E killed one VC in the river with M-79 fire.

At 1400H on 20 December, Co G found and destroyed 36 bunkers and four spider holes in the vicinity of BT1657. At 1456H, Co G found one VN male with a leg wound and turned him over to ITT. At 1456H, Co F spotted three VC, carrying weapons entering a village at BT171518. Co G sent two squads to the village to engage the enemy. The enemy fled, however G was able to kill one and capture a grenade he was carrying. Fox then spotted three NVA in the area and killed one. Co E, who was supporting Fox by fire, observed three more NVA KIA. Later, a flareship reported 3 more bodies that Echo did not see for a total of 6 NVA/KIA.

At 0650H on 21 December, a Co H ambush fired on four VC. Upon checking the area they found blood trails leading away from the area. At 0830H, in the village in the vicinity of BT167515, Co G found 31 bunkers plus two dud 105mm and one dud 155mm round. All were blown with demo. At 1700H, two VC women fired at Co F. Fox returned fire killing one.

At 1700H on 22 December, Co H fired 81mm and small arms at a VC in the river resulting in one VC KIA.

On 23 December at 2025H a Co H ambush took 8-10 VC under fire with small arms and claymore. There were negative results. At 2135H a Co E ambush was hit with enemy ordnance of undetermined caliber resulting in one USMC WIA.

On 24 December the screening was complete and units of the BIF started reembarkation aboard ARG shipping. By the 25th all units except the FSB, were pulled out of the cordon area. Aboard ship, a Frag Order was issued and on the 27th, the operation continued.

At 0730 on 27 December, BIF units commenced a helicopter lift into the new cordon area. The day was spent in setting the cordon, establishing a screening center, and collecting the local Vietnamese population. At 1430H Co F found one Chi-Com grenade at BT170488, wrapped in cloth. This item was turned over to the S-2. At 2020H Co G heard a bell ringing, all troops were put on extra alert, since in the past this has been a VC warning device.

At 0940H on 28 December Co F heard snipers firing at the helicopters and called in an artillery mission, resulting in the sniper fire ceasing. At 1210H, Co H located at BT159482 received sniper fire, which was returned with small arms and 81mm mortar mission. The results were 2 female WIA medevaced. At 1345H, Co E found a bunker 8'X3'X4' made of bamboo with a tunnel that ran 9' from the bunker. It contained 1 civilian radio and 1 M-26 grenade. The bunker was destroyed with demo. At 2200H, Co F heard movement in a village located at BT168494, and opened fire with M-16's and M-26's. The results were one VC KIA, and one Chi-Com grenade captured. At 2035H, Co F spotted one male herding some cows. Sent two men to check, and discovered 15 people in a hut near by. Transported them all under guard to screening center. At 2050H, Co E observed an individual moving toward their ambush site. The use of M-26's enabled the capture of one VCS. Transported VCS to C.I.T./I.T.T..

On the 29th of December at 0640H, Co F detained three people, a 50 year old man, a 15 year old boy and 16 year old girl. All three were taken under guard to the screening center. At 0645H, Co F had a VC walk into their lines, and when told to halt he ran, resulting in one VC KIA. Co G at 1120H found a spider hole with a small tunnel containing 1 Chi-Com grenade at BT 165484. Spider hole and Chi-Com grenade destroyed in place. VC suspect captured the previous night led elements of E Co to 3 vats which contained approximately 250 lbs of rice at 1130H. at 1200H, Co E found a camouflaged L shaped tunnel 1 meter wide, 3 meters long, and 3 meters deep constructed of bamboo and dirt. Inside were 4 VCS ages 20-30, who wore blue shirts, dark shorts but had no weapons. Both were delivered to the screening center. Another tunnel was found by Co E at 1230H, the tunnel was 5 feet long and led to a bunker made of bamboo and dirt. There were 3 VCS hiding in the bunker. It was destroyed after the individuals were taken to the screening center. At 1400H, Co E found a tunnel which contained 1 male, who was sent to the screening center. The tunnel was blown with demo. Co H, at 1450H, while searching a hut, found it had a false floor under which 800 lbs of grain were discovered.

The grain was sent to the screening center. Co E, at 1950H, apprehended 1 VCS. He had a certificate from the Central Bank of China for 820 piasters. VCS was taken under guard to the screening center. At 2000H, Co H fired on movement heard on a trail at BT 155525 and received small arms fire in return. Swept the area and found one male VC estimated to be 40 years old. Turned man over to CIT team at collection point.

On 30 December at 0655H, a Co H ambush spotted a man which was running about 25 meters from their position. He was told to halt; he didn't. The ambush opened fire and this action resulted in one VC KIA. At 1010H the National Police Field Forces found an AK-47 with 3 rounds hidden in some bamboo. The National Police Field Forces kept the weapon and ammo. Co F, at 1100H found 10 gallons of oil buried under the floor of a hut. The hut also contained the following items: clothes, documents, 1 NVA cartridge belt, 1 bottle of penicillin, 1 lighter with 504 insignia on it. The oil was destroyed and the remaining gear was sent to CIT. At 1230H, Co E found a tunnel, which contained the following items: 1 box of Medical Supplies, 1 cartridge belt, 1 canteen, and parts of a gas mask. All the above equipment was turned over to S-2. The BLT CP, at 1230H, discovered, at BT 167495, two 250 lb caches of rice. An additional 200 lbs was found at BT 167495. Also one 5 gallon can of gas was found at BT 167494. The gas was destroyed and the rice sent to the screening center.

The PRU's, at 1030H, on 31 December found a 3 layer tunnel complex which contained the following: 2 men, 3 women, a 15 year old boy, medical supplies, documents, 5 sewing machines, and clothing. All the people and above items were turned over to the CIT team. At 1030H Co E while searching bunkers found 2 claymores and 2 M-79 rounds. All gear was destroyed in place. BLT CP, at 1100H, found a female VN hiding in a bunker in the vicinity of BT 160497. She had an ID card plus some documents in her possession. The female and the items were turned over to CIT. At 1105H, Co F found 1500 lbs of rice buried in vats in the vicinity of BT 170489. Rice was sent to CIT. At 1300H, Co F found a rice cache of approximately 1700 lbs. It was found in the vicinity of BT 168491. Rice was turned over to CIT. At 1520H, Co F found 120 bags of rice and assorted documents in a bunker 6' X 8' X 4' in size. The documents and rice were turned over to the BLT S-2. At 1610H, Co F found a 15 yr. old girl with high fever and pains. With her were two women and three children. The girl was medevaced and the others were sent to CIT. At 2345H, Co G took shrapnel from an enemy M-79 resulting in 1 USMC WIA.

On 01 January at 0830H, Co F with CIT and PRU personnel screened 9 men, 10 women, and 7 teenagers. All personnel were turned over to CIT, IIT teams. At 1130H, a female VCS was apprehended by Co H. She led Co H to two tunnels. One contained a 60mm mortar tube that was home made. The tube and VCS were taken to BLT CP. At 1345, Co H while conducting search and clear in the vicinity of BT 143508 burned a haystack suspected to have a cache hidden inside. As a result, 4 secondary explosions were observed. At 1540H, A PRU triggered a booby trap rigged to a gate at BT 139504. The result of the booby trap was 1 PRU KIA and 4 PRU WIA. At 1500H, Co E at BT 156647, while searching a

routine family bunker, found a false wall. Behind the wall were numerous amounts of medical supplies and cloth. At 0900H Co F at BT 168492, while searching a bunker found a large amount of documents and clothing. All was turned over to S-2. At 1116H Co H, while on search and clear in the vicinity of BT 136504, tripped a M-26 grenade type SFD, resulting in 3 USMC WIA. At 1830H, Co E found a hidden bunker 5'x7'x4' and reinforced with concrete and bamboo in the vicinity of BT 157497. It was blown by the engineers.

At 0700H on the 3rd of January, Co F at BT 168495 found 4 bunkers #1, 16'x6'x4', #2, 5'x3'x2', #3, 8'x8'x2', #4, 4'x3'x3', also found 30 100 lb and 220 lb size cement crocks full of rice. Blew all crocks with C-4, and turned rice over to screening center. At 0730H Co F found a vat containing mens' and women's clothing. Clothing included hats and bras. Also 1 book, some documents and 1 I.D. card. All items were turned over to S-2. At 0900H Co E while searching and probing found a family bunker with 2 false walls at BT 157497. Bunker was searched with negative results and blown in place. At 0910H Co H, on a sweep, received small arms fire from 4 persons. They pursued, which resulted in 1 VC KIA and 1 VC WIA. Other VC escaped across a river. VC KIA was approximately 25 years old and had no weapon. VC WIA was approximately 15 years old and was carrying 1 SKS. This incident happed at BT 144485. At 1030H, in the vicinity of BT 167494, Co F found 1 bandoler of 5.56 ammo and 900 lbs of rice buried in a 50 gallon drum. All items were turned over to S-2. At 1130H Co F, while searching bunkers at BT 165494 found 1 blood transfusion kit on top of a bunker. Also found 1 can of vitamins. Both were destroyed. At 1530H Co E, while probing a family bunker, uncovered a false floor at BT 158498. Inside was found 1 sewing machine. It was blown in place.

At 1145H, on the 4th of January, at BT 166495, while searching a grave, Co E found the following articles: 1 fuse from a smoke grenade, 13 ChiCom blasting caps, 9 primers,  $\frac{1}{2}$  lb of C-4, 6 fuse lighters, 1 spool of trip wire and a dud 105mm round. 105mm round was destroyed and all other articles were sent to S-2. At 1230H Co E at BT 166495 while searching and probing found: 1 175mm round, 1 155mm round, 2 M-79 rounds, 2 W.P. boosters for napalm, 2 rocket heads, and 6 fuses for 105mm rounds. All items were blown by engineers. At 1345H, at BT 151491 Co H came across what was believed to be a SFD. It consisted of a 105mm round with a mine fuse. It was on top of the ground in vegetation. Engineers blew in place. At 1500H Co H, at BT 145501, found a bunker in which 2 persons were hiding. Co H called for people to come out. When people refused, Co H threw 1 M-26 grenade which resulted 2 VC KIA (c). VC were wearing black pajamas and were both approximately 25 years old. At 1530H, at BT 145488, Co H spotted 2 individuals walking down the trail carrying bags of rice. When they were spotted, they began to run. Co H captured the VCS. One was approximately 20 and the other 30 years old. Both were taken to collection point under guard.

At 0800H on the 5th of January, the helo extraction of BLT 2/26 was initiated and at 1400H was completed. The FSB reembarked the same day using surface craft.

9. Results.(a) Enemy Casualties

|              |  |
|--------------|--|
| NVA KIA      | 7  |
| VC KIA       | 27   |
| POW's        | 5  |
| VCS          | 8 (These individuals, at the conclusion of the operation, had not been classified) |
| DETAINEES    | 3431   |
| VC CIVIL DEF | 25   |
| VCI          | 40   |
| CHIEU HOI    | 1  |

(b) Captured Enemy Equipment and Material

12,000 pounds of rice  
 100 pounds of medical gear  
 5 sewing machines  
 3 Communist flags  
 Misc documents  
 7 - CHICOM grenades  
 1 - 60mm Mortar round  
 1 - 106mm RR round  
 2 - cartridge belts  
 2 - claymore mines  
 2 - M-79 rounds  
 1 - canteen  
 250 rounds of 7.62 linked ammo  
 7 individual weapons

10. Commanders Analysis

a. The mission assigned of conducting a cordon and search of designated portions of the AO was not new for the BMT. However, having primary responsibility for coordinating all agencies involved in population control and screening was new and posed certain problems. The first phase of the operation involved U.S. Army and Vietnamese support personnel from Quang Nam Province based at Hoi An, and U.S.M.C. elements from III MAF. Dog Teams, IIT, CIT, PF's, MIT's, NPFF's, PRU's, Cultural Drama Teams, PSYOP Teams, Census Grievance Committees, Army Advisors, Army Liaison personnel and others supported the operation.

b. The problem became complicated during the second phase of the operation when the village of Hien Luong was selected as a target. After the cordon was established and the population had been moved into the screening area, we found that the bulk of the 2,000 people in the compound were from Quang Tin Province. The situation was resolved by officials from Quang Tin when they decided to provide population/screening support units to work in concert with those from Quang Nam. Initially there was some confusion but order was restored and the screening process expedited.

c. Establishing the Cordon. Setting the cordon expeditiously is a prime consideration. The use of multiple LZ's, observation A/C and gunships are necessary to effect an efficient cordon. Once the cordon is established, the

population should be relocated to a screening area utilizing PSYOPS Teams, PRU's and organic troop units. This permits detailed search/probe activity within the village, provides the best possible facility to mass screening/interrogation assets, facilitates the civilian security problem, simplifies census taking and establishes the identity of anyone left in the village as VC/NVA.

d. Civilian Logistic Support. The bulk of the logistic requirements for indigenous personnel were provided by the two Provinces, augmented as necessary by U.S. military assets and captured food stuffs. This included evacuation of VCI/VCS/NVA/VC personnel. Agreements were made prior to the operation concerning specific responsibilities in this area. As a result, little or no confusion resulted.

e. Screening/Interrogation Procedures. All screening/interrogation assets were co-located at the screening center. Province personnel were task organized under their respective Army Advisors. An Army Liaison Officer, located with the BLT C.P., was utilized to coordinate the total effort. EPT/CTI personnel, in addition to performing their normal mission of screening captured VCS/POW's, generally supervised activities at the screening center, coordinated intelligence target missions, and served as a link between the BLT command element and screening center authorities.

f. Summary. Perhaps the most significant aspect of the operation was the accidental requirement for two GVN Provinces to become involved in a joint operation. The experience gained by Quang Tin officials from watching and working with the already experienced Quang Nam personnel will certainly pay dividends in future operations of this type.

11. Lessons Learned. Operation VALIANT HUNT was the first time the BLT was responsible for conducting a total cordon operation. In this respect, the operation was a good "training exercise" for the BLT unit leaders. However, there were no significant problems or enemy techniques encountered.

  
W. F. SPARKS  
Lieutenant Colonel  
Commanding

DISTRIBUTION: CTG 79.4 01-15  
S&C BLT 2/26 17-18

UNCLASSIFIED

HEADQUARTERS  
Battalion Landing Team 2/26  
9th Marine Amphibious Brigade, FMF  
FPO San Francisco, 96602

3/JDL/jmm  
11 December, 1968

From: Commanding Officer  
To: Commanding Officer, First Marines

Subj: Combat After Action Report (Operation MEADE RIVER)

Ref: (a) DivO 3480.1A  
(b) OPORD 315-68 (1st Marines)  
(c) OPORD 51-68 (BLT 2/26)

1. Name of Operation and/or Types of Operations. Operation MEADE RIVER
2. Inclusive Dates of the Operation. The operation took place during the period 20 November to 07 December, 1968.
3. Location. Quang Nam Province.
4. Command Headquarters. The Command Headquarters for the BLT 2/26 was located in the vicinity of BT 050691 between 20-25 November and in the vicinity of BT 038613 between 26 November and 07 December.
5. Reporting Officer. BLT 2/26 LtCol SPARKS.
6. Task Organization. Selected elements of BLT 2/26 were employed during Operation MEADE RIVER. The Operation Task Organization was as follows:

|                            |                  |              |
|----------------------------|------------------|--------------|
| <u>BLT 2/26</u>            | LtCol SPARKS     | 20Nov - 7Dec |
| <u>2ndBn, 26th Marines</u> | LtCol SPARKS     | 20Nov - 7Dec |
| H&S Co (-) (Rein)          | 1stLt HARRINGTON | 20Nov - 7Dec |
| Co E (Rein)                | 1stLt StJOHN     | 20Nov - 1Dec |
|                            | 1stLt LEWY       | 1Dec - 7Dec  |
| Co F (Rein)                | Capt HARTMAN     | 20Nov - 7Dec |
| Co G (Rein)                | Capt SEAL        | 20Nov - 7Dec |
| Co H (Rein)                | Capt FARMER      | 20Nov - 7Dec |
| 81mm Mortar Plt            | 1stLt GREEN      | 20Nov - 7Dec |
| 106mm RR Plt               | GySgt WHIDDEN    | 20Nov - 7Dec |

1

Tab B

2/26  
a/a  
Opn MEADE RIVER

20Nov - 7 Dec 1968

UNCLASSIFIED

|   |                |              |
|---|----------------|--------------|
| Btry B (-) (Rein) 1/13                        | Capt FRANZEN   | 20Nov - 7Dec |
| Mortar Btry (Rein) 1/12                       | 1stLt SAUNDERS | 20Nov - 7Dec |
| 1stPlt (Rein) CoA 5thAmTracBn                 | 1stLt COX      | 20Nov - 7Dec |
| 1stPlt (Rein) CoA 5th ATBn                    | SSgt HOOKANO   | 20Nov - 7Dec |
| 2nd Plt (Rein) CoC 3d Engr Bn                 | 1stLt ASHCROFT | 20Nov - 7Dec |
| 2nd Plt (Rein) H&S Co 3dSP Bn                 | 1stLt O'NEILL  | 20Nov - 7Dec |
| 2nd Plt (Rein) CoC 3rd MT Bn                  | 1stLt LAMBIN   | 20Nov - 7Dec |
| 4th Plt (Rein) CoA 5th Tk Bn                  | 1stLt MURPHY   | 20Nov - 7Dec |
| LSU BLT 2/26                                  | 1stLt BURNS    | 20Nov - 7Dec |
| Det, HQ Bn, (Postal, Disb & Photo)            | 1stLt LOVELACE | 20Nov - 7Dec |
| 1st Clearing Plt (Rein) CoD 5thMedBn Lt (USN) | BALLING        | 20Nov - 7Dec |
| Det, Radio Relay, HQ Co, 26th Mar             | Sgt BUFFA      | 20Nov - 7Dec |

## 7. Supporting Forces.

### a. Artillery

(1) The 1st Bn, 11th Marines was in direct support of Operation MEADE River and BLT 2/26. The Battalion consisted of two 105mm howitzer batteries, Battery A and Battery B, 1 platoon of 105mm howitzer from Battery C, and W Battery. Reinforcing 1/11 was 1/4/11, a 155mm howitzer battery, and a platoon of 8 inch howitzers. Because of the policy to keep friendly Vietnamese property from being destroyed, artillery was used sparingly in the BLT 2/26 A.O. Preparatory fire consisting of a group of targets on each battalion objective were planned but never used as they were not required.

(2) The BLT did call 38 artillery missions on targets inside the cordon during latter phases of the operation. The missions effectively stopped enemy movement and prevented any buildup to the BLT's front.

### b. Air

(1) Four (4) fixed wing sorties.

(a) Four (4) USMC

(2) The above does not include:

(a) Sixteen (16) Aerial Observers USMC

(b) Eight (8) Huey Gunships USMC

(c) Thirty-six (36) C-130 Flareship USMC

(d) Seven (7) AC-47 Gun Flareship USAF

(3) In all cases air support was effective once it arrived on station; the average response time for aerial observers/Huey Gunships was thirty (30) minutes from the time of initial request. The average response time for fixed wing aircraft was one (1) hour. Four of the fixed wing sorties were in support of troops in contact.

(4) Regimental TACP net was used to request air. This is in violation of doctrine which states that the Battalion will use the Tactical Air Request Net (a direct line to DASC). As a result of using Regimental TACP, much time was lost while the request went from Battalion to Regiment to Division-Wing and finally to DASC.

#### 8. Intelligence

(a) Prior to Operation MEADE RIVER the V-25 Bn, R-20 Bn, V/L Elements of the 68B Regt, Q-15 L.F. Co and various guerilla platoons were operating in the 2nd Bn, 26th Marines portion or in adjacent portions of the A.O. This intelligence was gained from the "Dodge City - Co Noi Special Study Nov-68" prepared by the First Marine Division.

(b) Interrogation of a POW captured by the BLT confirmed the location of elements of the 68B Regt, A.K.A., 577 Battery and the R-20 Bn. It was also revealed that the Q-82 Bn and the V-25 Bn's were not in the cordon area. The V-25 Bn was said to be conducting training in Duy Xuyen District.

(c) The terrain in the A.O. is characterized by paddyland and is used primarily for farming. The numerous paddy walls and tree lines provided good cover, concealment and fields of fire. The numerous built up areas provided good cover, and concealment while limiting observation and fields of fire. The dominate terrain features in the A.O. were Highway #1, which was the East boundary and the Thanh Quat and Tam Giap Rivers which were the West, South and North boundaries.

(d) Due to the nature of the operation the civilians in the area were immediately removed to Detention Centers and BLT 2/26 had only limited contact with them. For this reason it is impractical to evaluate the population.

9. Mission. BLT 2/26 mission was to establish a cordon in assigned area; prevent any personnel from entering cordon; prevent any personnel from leaving cordon, except personnel who were authorized to leave the cordon at authorized point to enter 1st Marines screening compound. On order BLT 2/26 swept into the cordon area to new cordon positions.

UNCLASSIFIED

10. Concept of Operation: BLT 2/26 staged at 1st Bn 1st Marines CP on D-1. At H-Hour, D-Day, BLT 2/26 conducted a motor march to assigned dismount points and established a tight cordon in the assigned area. On order, BLT 2/26 swept inland by foot to new cordon positions searching and clearing the area as they proceeded.

11. Execution:

BLT 2/26 commenced Operation Meade River at 200715H. The cordon was established by 0800H in the assigned area. At 1200H, F Company received sniper fire from a house, fire was returned with 1 round of 3.5 and sniper ceased. At 202030H, G Company saw 12 enemy moving at BT 046604; opened fire with small arms and called in 60mm and 81mm mortar missions. Search of the area revealed 1 enemy KIA with weapon, grenades and I.D. papers.

On 21 November, G Company received approximately 15 AK-47 rounds of sniper fire; fire was returned and search of the area revealed nothing. At 210100H, H Company received sniper fire. Fire was returned and search at first light revealed 1 enemy KIA(c) with cartridge belt, grenades and documents. At 210950H, W 1/12 saw 3 men, 2 with AK-47's. Enemy took W 1/12 under fire and fire was returned with unknown results.

On 22 November, 2 USMC were wounded due to accidental discharges; investigations are being conducted. F Company delivered 115 detainees to a collection point where they were transported to 1/1 CF during the day. W 1/12 saw 1 enemy at 222040H and fired M-79's at him with unknown results. At 2105H 81mm Mortar Platoon spotted 10-15 enemy moving at BT 041622, north and east of the cordon. They were taken under fire with small arms, enemy withdrew after returning fire with AK-47's; search of area revealed nothing significant.

At approximately 230530H, W 1/12 LP heard movement. The LP threw 2 grenades and search the area; results of the search were 1 VC WIA with AK-47 and 2 grenades captured. An element of E Company observed 3 enemy carrying weapons moving in the vicinity of BT 049593. Enemy were taken under fire with small arms, mortars and artillery with unknown results.

On 24 November, 11 Vietnamese were detained. And the following found and destroyed: 6 M-16 magazines, 1 Chi-Com grenade, and a 40 ft long tunnel/bunker. An SFD accidentally detonated by H Company resulted in 1 USMC WIA. At 2200H G Company received fire from 4 AK-47's spaced about 50 meters apart. The enemy fire was returned with small arms, 81mm mortar and 105mm missions with unknown results.

106mm RR personnel observed rockets being fired at 250100H and called in artillery mission resulting in secondary explosions. The search on 25 November uncovered a weapon's list, legal papers, 30 pictures of Vietnamese, an ID card, 200 lbs. of rice and a body floating downstream believed to have been killed the night before.

At 260930H, B 1/13 and W 1/12 were chopped to 1st Bn, 1st Marines. The

UNCLASSIFIED

following items were found on 26 November: 1 SFD, 1 reinforced bunker, 2 ID cards and a pack. Also, civilians were taken to the collection point.

In the vicinity of BT 034605, F Company found and destroyed a bunker and fighting hole complex on 27 November. F Company, at BT 034601, found 56 fighting holes, mortar positions, 2 French 4 cylinder engines, a Hell-Box, 180 SFD's and a water heater. The positions were destroyed and the gear evacuated. The PFF's working with H Company detained 32 civilians who were sent to collection point. G Company found 400 pounds of rice. G Company received 2 rounds of sniper fire from BT 025605; the fire was returned resulting in 1 VC/NVA KIA(c) and the capture of 1 7.62mm pistol, 1 Chi-Com grenade and documents. At 1320H, H Company found a SFD which accidentally detonated resulting in 1 USMC WIA (medevaced).

On 28 November, BLT 2/26 units detained 6 civilians and found and destroyed 5 tunnels, 26 bunkers, 400 pounds of rice, 10 SFD's, 2 dud 81mm mortar rounds and forwarded documents to 1st Marines. While moving to an ambush site, An H Company unit heard movement and set up an immediate ambush resulting in 1 VC/NVA KIA(c).

On 29 November, Company E captured a POW with 1 7.62mm pistol, pack, medical supplies, 1 Chi-Com grenade. On the same day, G Company had 1 VC WIA surrender with helmet and pack. F Company found 2 fresh graves with bodies that had been killed by shrapnel wounds.

H Company found 2 females, hiding in a bunker at 301520H. One was wounded and the other was caring for her; interrogation revealed that they were VC. At BT 025608, H Company found approximately 1000 pounds of rice buried in concrete vats underground; rice was evacuated to 1st Marines CP. At 301800H, Company E chopped to 3rd Bn, 26th Marines.

At 010700H, H Company found a VC hiding in a tunnel. F Company spotted 6 persons running from them and opened fire with small arms resulting in 6 civilians medevaced. G Company at 011700H spotted 2 VC sitting on top of a bunker and fired 106mm RR resulting in 2 VC KIA(c).

On 2 December, BLT CP spotted 2 VC and took them under fire resulting in 1 VC KIA(c) and the capture of 2 Chi-Com grenades and documents. At 0935H, G Company took 2 VC under fire resulting in 2 VC KIA(c). H Company called 81mm mortar mission on 2 VC at 2050H resulting in 1 VC KIA(c). At 2055, H Company ambush took 6 VC under fire resulting in 3 VC KIA(c).

On 3 December, F Company captured 1 NVA/WIA. An F Company patrol found a trench line which measured 2<sup>1</sup>/<sub>2</sub> by 3<sup>1</sup>/<sub>2</sub> by 400 meters; the patrol also found a VC body and miscellaneous 782 gear and documents. At 2030H, USMC WIA (medevaced) result from a grenade in G Company.

G Company at 041120H, took 1 VC under fire resulting in 1 VC KIA(c). While

UNCLASSIFIED

sweeping the area, after a fire fight, H Company found 9 NVA KIA(c). At 041510H, H Company took sniper fire and returned fire resulting in 1 VC KIA(c). F Company found two bodies, one killed by bullet wound, the other by shrapnel wounds; F Company also found 250 rounds of 7.62 linked ammo and 4 NVA packs.

At 051000H, E Company chopped to 1st Bn, 1st Marines. On 5 December, BLT 2/26 units found the following: documents, 4 box mines, 12 fighting holes and 4 bunkers. G Company found one decapitated VC/NVA(c), at 060945H. At 062200H, F Company returned sniper fire resulting in 1 VC KIA(c) and 1 AK-47.

On 7 December, F Company took 1 NVA under fire resulting in 1 NVA KIA(c), 1 US M-2 Carbine, 2 Chi-Com grenades, cartridge belt, and documents. At 071300H, G Company Chopped to 1/1. At 071535, G Company detonated an SFD resulting in 1 USMC KIA and 6 USMC WIA (medevaced). At 071600H E and G Companies chopped to BIT 2/26; at 071800H BLT 2/26 chopped from 1st Marine Division.

## 12. Results.

### a. Casualties:

|               |       |
|---------------|-------|
| Friendly KIA  | 10 *  |
| Friendly WIA  | 61 *  |
| Enemy KIA     | 77 ** |
| Enemy WIA/POW | 20 ** |

### b. Enemy Weapons and Equipment Captured or Destroyed:

|                                 |          |
|---------------------------------|----------|
| SFD's                           | 21       |
| SFD's Cache                     | 180      |
| AK-47                           | 2        |
| US M-2 Carbine                  | 1        |
| 7.62mm Type 58 Pistol           | 2        |
| Claymore                        | 1        |
| TNT, Chi-Com                    | 4 cases  |
| Chi-Com Grenades                | 17       |
| C-4                             | 100 lbs. |
| RPG 2's                         | 3        |
| Assorted 782 gear and uniforms. |          |

|  |           |
|--|-----------|
| c. <u>Bunkers Destroyed</u>              | 46        |
| d. <u>Tunnels Destroyed</u>              | 7         |
| e. <u>Trench 2'by3'by 400 meters</u>     | 1         |
| f. <u>Rice Captured</u>                  | 3320 lbs. |
| g. <u>Dud Artillery Rounds Destroyed</u> | 13        |

\* Includes 23 WIA and 1 KIA as result of a command detonated mine on 200735H and casualties suffered by Co's E and G when OPCON to other units.

\*\* Includes activities of Co's E and G when OPCON to other units.

UNCLASSIFIED

13. Administrative Matters: Administrative plans were adequate and no administrative problems were encountered. No new problems in logistics, maintenance, transportation and communications were encountered.

14. Special Equipment and Techniques: No special equipment or techniques were used during the operation.

15. Commander's Analysis: From the viewpoint of BLT 2/26, Operation Meade River was a complete success. It was well organized, controlled, executed and supported. While the initial troop commitment is large, the concept of cordoning a large area, removing the civilian population, and then closing the cordon to destroy the remaining VC/NVA units was proven to be extremely sound. It is felt that this concept is superior to that of inserting a blocking force and then conducting search and destroy operations toward the block.



D.H. CLARK  
By direction

DISTRIBUTIONCopy #

|               |       |
|---------------|-------|
| 1st Marines   | 1-14  |
| CG 9th MAB    | 15    |
| CTG 79.4      | 16-28 |
| CG 1st MARDIV | 29    |
| S&C BLT 2/26  | 30-33 |

UNCLASSIFIED

Copy of 65 Copies  
BLT 2/26  
USS Okinawa (LST-3)  
121600H Dec 1968

Operation Order 120D-68

Ref: (a) Map: HOI AN 6640 I  
(b) SLF COI

Time Zone: H

Task Organization: Annex A (Task Organization)

### 1. SITUATION

a. Enemy Forces Intelligence brief

b. Friendly Forces

- (1) SLF and 1st MAW provide air support.
- (2) 7th Fleet provides NGF support.
- (3) In-country sources provide CIT, ITT, APT, and PFF units.
- (4) CTC 76.4 provides (1) PsyOps team.

c. Attachments and Detachments No change

### 2. MISSION

BLT 2/26 established a cordon surrounding the village of Thi Lai and An Lac as shown in Annex B (operation overlay); assists, as required, in population screening and searching for caches; conducts patrols and ambushes as necessary to protect the integrity of the cordon.

### 3. EXECUTION

a. Concept of Operation. BLT 2/26 initially lands three cordon companies by helicopter assault in accordance with Annex C (Landing Plan). BLT 2/26 lands, by surface means, Battery B and such Engineer/Shore Party support as required to establish a coastal artillery fire support base. BLT 2/26 subsequently lands, by helicopter, one company (-) to establish an inner cordon. Lastly, BLT 2/26 lands, by helicopter, W Battery and establishes a mortar fire support base in the immediate cordon area.

b. Company E (Rein)

- (1) Land IAW Annex C (Landing Plan).
- (2) Establish cordon position IAW Annex B (Operation Overlay).

UNCLASSIFIED

Prevent any persons from exfiltrating through cordon in assigned area.

- (3) Be prepared to provide security for a POW compound.
- (4) Be prepared to employ one section 106 RR Plt in rear defense role.
- (5) Plan night activities designed to protect both front and rear of cordon in assigned area.

d. Company G (-) (Rein)

- (1) Land IAW Annex C (Landing Plan).
- (2) Establish Interior cordon positions IAW Annex B (Operation Overlay). Prevent any persons from moving between the two target villages.
- (3) Be prepared to provide assistance in moving population to designated screening area.
- (4) Be prepared to assimilate 3d Platoon (Rein), Co G into cordon upon release as SLF reserve (Sparrow Hawk).

e. Company H (Rein)

- (1) Land IAW Annex C (Landing Plan).
- (2) Establish cordon positions IAW Annex B (Operation Overlay). Prevent any persons from exfiltrating through cordon in assigned area.
- (3) Be prepared to employ one section 106 RR Plt in rear defense role.
- (4) Be prepared to assimilate 81mm Mortar Plt in cordon.
- (5) Plan night activities designed to protect both front and rear of cordon in assigned area.

f. 81mm Mortar Platoon

- (1) Land IAW Annex C (Landing Plan). Establish firing positions within Co H sector of cordon.
- (2) D/S BLT 2/26.
- (3) Be prepared to displace to mortar fire support base (to be selected).

g. 106 RR Platoon

- (1) Land IAW Annex C (Landing Plan).
- (2) Initially D/S BLT 2/26.
- (3) Be prepared to attach a section each to Companies E, F and H.

h. Battery B, 1st Bn, 13th Marines

- (1) On order land IAW Annex C (Landing Plan).
- (2) Establish fire support base as shown in Annex B (Operation Overlay).
- (3) D/S BLT 2/26.

UNCLASSIFIED

i. W Battery, 1st Bn, 12th Marines

- (1) On order, land IAW Annex C (Landing Plan).
- (2) Establish mortar fire support base in area to be selected.
- (3) G/S BLT 2/26.

j. 2d Platoon, Co C, 3d Engr Bn

- (1) Land IAW Annex C (Landing Plan).
- (2) Initially D/S Btry B. Conduct minesweep of area prior to landing of Btry B. Assist Btry B in construction of firing positions.
- (3) Be prepared to helilift to cordon area on order.
- (4) Be prepared to construct POW compound if required.

k. Det, H&S Co, 3d SP Bn

- (1) Land IAW Annex C (Landing Plan)
- (2) Provide Shore Party support to fire support base.
- (3) On order, provide limited HST support to cordon area.
- (4) Be prepared to establish an LSA in the vicinity of the Fire Support Base, capable of supporting BLT 2/26.

l. Det, H&S Co, 3d SP Bn (EOD)

- (1) Land IAW Annex C (Landing Plan).
- (2) D/S BLT 2/26.

m. Security Det, Hq Co, 9th MAB

- (1) Land IAW Annex C (Landing Plan).
- (2) Provide POW escort from cordon area to District POW collection point.

n. SLF Reserve

- (1) 3d Plt (Rein), Company G (Sparrow Hawk)
  - (a) Be prepared for commitment in any sector of cordon.
  - (b) Be prepared for commitment as security for a downed helicopter (s).
  - (c) On order, land IAW Annex C (Landing Plan) and revert to OPCON, G Company.

o. Coordinating Instructions

- (1) D-Day 15 December (To be confirmed).
- (2) L Hour 0800 (To be confirmed).
- (3) H Hour TBA.
- (4) Operation Code name: Valiant Hunt.
- (5) Thrust Points
  - (a) Cigarettes BT 1955
  - (b) Beer BT 1450
  - (c) Tooth Paste BT 1745
  - (d) States BT 2352
  - (e) Desserts BT 1752
  - (f) Cars BT 1649
- (6) Annex B (Operation Overlay).

UNCLASSIFIED

- (7) Annex C (Landing Plan).
- (8) Be alert to mines and booby traps.
- (9) Troops are to remain aloof from civilian population.
- (10) Rules of Engagement apply.
- (11) Sparrow Hawk Plt Cdr. report to SLF S-3 at H-60 Minutes.
- (12) Companies will carry probes for use in possible subsequent search operation.
- (13) Fire Support Coordination.
  - (a) B Battery is in direct support.
  - (b) W Battery is in general support.
  - (c) B Battery CO is Artillery Groupment Commander.
  - (d) B Battery Fire Direction Officer will assign battery fire.
  - (e) All artillery F. O.'s and both batteries will be on COF #1 initially (ref. B).
  - (f) COF #2 will be used as directed by the Artillery Groupment Commander.
  - (g) All Artillery F. O.'s will send fire missions to B Battery on COF #1 (Ref. B).
  - (h) Save-A-Plane clearance will be obtained from the Supporting Arms Coordination Center by the Fire Support Coordination Center using the Fire Direction Net (ref. B).
  - (i) Corrections will be sent directly to the battery which is firing the mission.

#### 4. ADMINISTRATION AND LOGISTICS

a. Admin and logistics instructions contained in Administration Plan 1-68 except as follows:

- (1) Supplies
  - (a) Basic allowance Class X.
  - (b) Three days rations, minimum two canteens.
  - (c) Primary resupply for cordon units and mortar fire support base to be by helicopter. Submit resupply requirements by 1200 the day prior to resupply.
  - (d) Resupply of artillery fire support base to be by surface means. Submit resupply requirements by 1200 the day prior to the resupply.
  - (e) Request for resupply will be submitted on the Admin Net to S-4A at BLT CP.
- (2) Evacuation and hospitalization.
  - (a) All KIA's to USS Okinawa.
  - (b) Routine MEDEVAC requests to USS Okinawa via S-4A and Admin net to TACLOG net. Other MEDEVAC request use fastest means available.
  - (c) Communication with helicopters in the LZ for routine MEDEVACS is HST Logistics Net. For all other MEDEVACS use TACP Local Net.
  - (d) Civilian and detainee casualties to be MEDEVACED to NSA, Danang.

UNCLASSIFIED

5. ~~COMMAND AND COMMUNICATIONS-ELECTRONICS~~

- a. Reference (b)
- b. Guard radio nets commencing 0600 D-Day.
- c. Wire lines will be installed at each company and terminated at a switchboard in the BLT Command Post.
- d. Used dry cell batteries will be destroyed beyond the point of any possible enemy use.
- e. Command Post

- (1) SLF.....USS Okinawa
- (2) BLT 2/26.....Vic BT 155524
- (3) Companies and Batteries report command post locations ashore when established.

## ANNEXES:

A-Task Organization  
B-Operation Overlay  
C-Landing Plan  
Z-Distribution

*W. F. Sparks*  
W. F. SPARKS

Lieutenant Colonel, U.S. Marine Corps  
Commanding

DISTRIBUTION: Annex Z (Distribution) to Operation Order 120D-68.

UNCLASSIFIED

Copy No. \_\_\_\_ of 65 Copies

BLT 2/26

USS OKINAWA (LPH-3)

121000H December 1968

Annex A (Task Organization) to Operation Order 120D-68

Time Zone: H

(All attachments effective 141600H December 1968)

BLT 2/262d Bn, 26th MarinesH&S Co. (-) (Rein)

"A" Cnd Group  
 Det, MP Co  
 Det, EOD Plt

Company E (Rein)

Det, Comm Plt, H&S Co  
 FO Tn, Btry B  
 FO Tn, 81mm Mortar Plt  
 NGF Spot Team  
 S-2 Scout

Company F (Rein)

Det, Comm Plt, H&S Co  
 FO Tn, Btry B  
 FO Tn, 81mm Mortar Plt  
 NGF Spot Team  
 S-2 Scout  
 FAC Party

Company G (-) (Rein)

Det, Comm Plt, H&S Co  
 FO Tn, Btry B  
 FO Tn, 81mm Mortar Plt  
 S-2 Scout

Company H (Rein)

Det, Comm Plt, H&S Co  
 FO Tn, Btry B  
 FO Tn, 81mm Mortar Plt  
 S-2 Scout

LtCol SPARKS

LtCol SPARKS

1stLt HARRINGTON

2ndLt SMITH

Capt STOLZ

Capt SEAL

Capt FARMER

A-1

S E C R E T

UNCLASSIFIED

81mm Mortar Plt (-)

1stLt GREEN

106mm RR Plt

GySgt WHIDDEN

Battery, 1st Bn, 13th Marines

Capt FRANZEN

W Battery, 1st Bn, 12th Marines

1stLt SAUNDERS

1st Plt, (-), Co A, 5th Amph Bn

GySgt MOSQUEDA

2d Plt, Co, 3rd Engr Bn

2ndLt McPHERSON

Det, H&S Co, 3rd Shore Party Bn

1stLt ONEILL

SLF Reserve

SSgt HUMPHREY

3d Plt (Rein), Co G, 2d Bn 26th Marines  
RA Squad

By Command of Lieutenant Colonel SPARKS

D. H. CLARK  
Major, U.S. Marine Corps  
Executive Officer

DISTRIBUTION: Annex 2(Distribution) to Operation Order 120D-68.

S E C R E T

Copy of 65 Copies  
 BLT 2/26  
 USS Okinawa (LPH-3)  
 121600H Dec 68

Annex C (Landing Plan) to Operation Order 120D-68.

Ref: (a) CTG 79.4 OpPlan 120A-68  
 (b) NWP 22(B)  
 (c) FMFM 6-3  
 (d) FMFM 3-3  
 (e) NWIP 22-3 (B)

Time Zone: H

1. GENERAL.

- a. Annex B (Operation Overlay).
- b. This plan provides for a combined surface and helicopter-borne amphibious assault as follows:
  - (1) Rifle Companies, BLT CP group, 81mm Mortar Platoon, 106mm RR Platoon, and "W" Btry, 1st Bn, 12th Marines to be helilifted to the assigned objective.
  - (2) Battery B, 1st Bn, 13th Marines, 2d Plt, Co C, 3d Engr Bn, Det H&S Co, 3d SP Bn and Det, BMU to be transported by surface means to establish an artillery Fire Support Base.

2. CONTROL MEASURES

- a. Ship to shore control in accordance with reference (a), (b), (c), (d), and (e).
- b. BLT Tac-Log will be established in accordance with paragraphs 2905 and 2918c (6) of reference (e).

By Command of Lieutenant Colonel SPARKS



D. H. CLARK  
 Major, U.S. Marine Corps  
 Executive Officer

C-1

S E C R E T

**S E C R E T****APPENDIXES:**

1. Assault Schedule
2. Serial Assignment Table
3. Landing Sequence Table
4. Landing Diagram
5. Landing Craft and Amphibious Vehicle Assignment Table
6. Helitank Serial Assignment Table
7. Helitank Wave and Serial Assignment Table
8. Helicopter Employment and Assault Landing Table

**DISTRIBUTION:** Annex Z (Distribution) to Operation Order 1200-68

S E C R E T

Copy of 65 Copies  
 BLT 2/26  
 USS Okinawa  
 121600H Dec 1968

APPENDIX 1 to Annex C (Landing Plan) to Operation Order 120D-68

ASSAULT SCHEDULE

| SERIAL | WAVE    | TIME   | CRAFT/VEHICLE | UNIT          |
|--------|---------|--------|---------------|---------------|
| 500    | 1       | H-Hour | 4 LVTP-5      | Amtrac Plt(-) |
| 501    |         |        | 1 LVTP-5      | Engr Plt(-)   |
|        |         |        |               | Det. SP Plt   |
|        |         |        |               | Det. B-1/13   |
| 610    | ON CALL |        | 1 LCU         | SP Plt(-)     |
|        |         |        |               | Det. Engr Plt |
|        |         |        |               | Det. BMU      |
|        |         |        |               | Det. B-1/13   |
| 1100   | ON CALL |        | 1 LCM-8       | Floating Dump |
| 726    | ON CALL |        | 1 LCM-8       | Det. B 1/13   |
| 727    |         |        | 1 LCM-8       | Det. B 1/13   |
| 720    | ON CALL |        | 1 LCM-6       | Det. B 1/13   |
| 721    |         |        | 1 LCM-6       | Det. B 1/13   |
| 722    |         |        | 1 LCM-6       | Det. B 1/13   |
| 723    |         |        | 1 LCM-6       | Det. B 1/13   |
| 724    |         |        | 1 LCM-6       | Det. B 1/13   |
| 725    |         |        | 1 LCM-6       | Det. B 1/13   |

C-1-1

S E C R E T

S E C R E T

Copy of 65 Copies  
BLT 2/26  
USS Okinawa  
121600H Dec 1968

## APPENDIX 2 to Annex C (Landing Plan) to Operation Order 120D-68

| SERIAL ASSIGNMENT TABLE |                |      |  |                 |      |                                  |
|-------------------------|----------------|------|--|-----------------|------|----------------------------------|
| SERIAL                  | UNIT           | PERS | MATERIAL/<br>EQUIP   | TYPE<br>CRAFT   | SHIP | REMARKS                          |
| 500                     | Amtrac Plt (-) | 18   |  | 4 LVTP-5        | LPD  |                                  |
|                         | Engr Plt (-)   | 45   |  |                 |      |                                  |
|                         | Det. SP Plt    | 4    |  |                 |      |                                  |
|                         | Det. B 1/13    | 20   |  |                 |      |                                  |
| 501                     | Amtrac Plt     | 4    |  | 1 LVTP-5<br>CMD | LPD  |                                  |
| 610                     | SP Plt (-)     | 40   | 1 TD-15<br>1 M-151<br>1 M-51<br>1 M-416<br>1 M-107<br>1 6000 lb P.L.<br>1 2M CRANE                     | LCU             | LSD  | ALL EQUIP<br>PRELOADED ON<br>LCU |
|                         | Det. Engr Plt  | 3    | 3 M-274  |                 |      |                                  |
|                         | Det. B 1/13    | 2    | 1 TD-15  |                 |      |                                  |
|                         |                | 1    | 1 MRC-109  |                 |      |                                  |
|                         | Det. EMU       |      | 1 TD-25<br>COMM. EQUIP   |                 |      |                                  |
| 720                     | B 1/13         | 10   | 1 M-35<br>1 M-105 (HOW)  | LCM-6           | LSD  |                                  |
| 721                     | B 1/13         | 10   | 1 M-105 (HOW)  | LCM-6           | LSD  |                                  |
| 722                     | B 1/13         | 10   | 1 M-105 (HOW)  | LCM-6           | LSD  |                                  |
| 723                     | B 1/13         | 10   | 1 M-105 (HOW)  | LCM-6           | LSD  |                                  |
| 724                     | B 1/13         | 10   | 1 M-105 (HOW)  | LCM-6           | LSD  |                                  |
| 725                     | B 1/13         | 10   | 1 M-105 (HOW)  | LCM-6           | LSD  |                                  |
| 726                     | Det. B 1/13    | 2    | 1 M-35<br>1 M-107  | LCM-8           | LSD  |                                  |
| 727                     | Det. B 1/13    | 2    | 1 M-35<br>1 M-105  | LCM-8           | LSD  |                                  |
| 1100                    |                |      | 105mm Ammo,<br>220 rolls Concertina, 400<br>long Engr stakes, 8 reels<br>barbed wire, Engr Demo Equip. | LCM-8           |      | ALL TO BE<br>PRELOADED           |

C-2-1

S E C R E T

S E C R E T

Copy of 65 Copies  
 RPT 2/26  
 USS Okinawa  
 121600H Dec 1968

## APPENDIX 3 to Annex C (Landing Plan) to Operation Order 120D-68

LANDING SEQUENCE TABLE

| SERIAL | UNIT          | ELEMENT             | NO. AND<br>TYPE CRAFT | SHIP | REMARKS                  |
|--------|---------------|---------------------|-----------------------|------|--------------------------|
| 610    | 3rd SP Bn     | Det. H&S Co.        | 1 LCU                 | LSD  |                          |
| "      | 3rd Engr Bn   | Det. 2nd Flt, C Co. |                       |      |                          |
|        | 1/13          | Det. Btry B         |                       |      |                          |
|        | BMU           | Det. EMU            |                       |      |                          |
| 1100   | Floating Dump |                     | 1 LCM-8               | LPD  | TO BE OFFLOADED<br>BY SP |
| 726    | 1/13          | Det. Btry B         | 1 LCM-8               | LSD  |                          |
| 727    | 1/13          | Det. Btry B         | 1 LCM-8               | LSD  |                          |
| 720    | 1/13          | Det. Btry B         | 1 LCM-6               | LSD  |                          |
| 721    | 1/13          | Det. Btry B         | 1 LCM-6               | LSD  |                          |
| 722    | 1/13          | Det. Btry B         | 1 LCM-6               | LSD  |                          |
| 723    | 1/13          | Det. Btry B         | 1 LCM-6               | LSD  |                          |
| 724    | 1/13          | Det. Btry B         | 1 LCM-6               | LSD  |                          |
| 725    | 1/13          | Det. Btry B         | 1 LCM-6               | LSD  |                          |

C-3-1

S E C R E T

S E C R E T

Copy Of 65 Copies  
BLT 2/26  
USS Okinawa  
121600H Dec 1968

## APPENDIX 4 to Annex C (Landing Plan) to Operation Order 120D-68

LANDING DIAGRAM

| <u>H-HOUR TBA</u> |   |     |      |                     |      | <u>BEACH BURE</u> |
|-------------------|---|-----|------|---------------------|------|-------------------|
| WAVE 1            | Eng Plt (-), Det. S.P. Plt., Det. "B" 1/13            |     |      |                     |      |                   |
| H-Hour            | 1-1   | 1-2 | 1-3  | 1-4                 | 1-5* |                   |
|                   | P   | P   | P    | P                   | C    |                   |
| -----             |   |     |      |                     |      |                   |
| ON CALL           | S.P. Plt. (-), Det. Eng Plt., Det. EMU, Det. "B" 1/13 |     |      |                     |      |                   |
|                   | 2-1   |     |      |                     |      |                   |
|                   | U   |     |      |                     |      |                   |
| -----             |   |     |      |                     |      |                   |
| ON CALL           | Flooding Dump   |     |      |                     |      |                   |
|                   | 3-1   |     |      |                     |      |                   |
|                   | (8)   |     |      |                     |      |                   |
| -----             |   |     |      |                     |      |                   |
| ON CALL           | Det. "B" 1/13   |     |      |                     |      |                   |
|                   | 4-2   |     | 4-1* |                     |      |                   |
|                   | (8)   |     | (8)  |                     |      |                   |
| -----             |   |     |      |                     |      |                   |
| ON CALL           | "B" 1/13 (-)  |     |      |                     |      |                   |
|                   | 5-6   | 5-4 | 5-2  | 5-1*                | 5-3  | 5-5               |
|                   | (6)   | (6) | (6)  | (6)                 | (6)  | (6)               |
| -----             |   |     |      |                     |      |                   |
| P....LVTP5A1      |   |     |      | (8)....LCM-8        |      |                   |
| C....LVTP5 CMD    |   |     |      | (6)....LCM-6        |      |                   |
| U....LCU          |   |     |      | *....Troop Wave CMD |      |                   |

C-4-1

S E C R E T

S E C R E T

Copy of 65 Copies  
BLT 2/26  
USS Okinawa  
121600H Dec 1968

## APPENDIX 5 to Annex C (Landing Plan) to Operation Order 120D-68

LANDING CRAFT AND AMPHIBIAN VEHICLE ASSIGNMENT TABLE

| CRAFT                  | EQUIP AND/OR PERSONNEL   | BOAT SPACE                 | FORMATION            |
|------------------------|--|----------------------------|----------------------|
| LVTP 1-1               | Elem. B 1/13<br>Elem. Engr Plt   | 5<br><del>12</del><br>17   | 1-1<br>X<br>1-2      |
| LVTP 1-2               | Elem. B 1/13<br>Elem. Engr Plt   | 5<br>12<br>17              | X<br>1-3<br>X<br>1-4 |
| LVTP 1-3               | Elem. B 1/13<br>Elem. Engr Plt   | 5<br>12<br>17              | X<br>1-5 (C)         |
| LVTP-5 1-4             | Det. SP Plt<br>Elem. Engr Plt  | 4<br>9<br>13               |                      |
| LVTP-5<br>CMD          | Elem. B 1/13<br>Det. SLF Comm  | 5<br>3                     |                      |
| -----                  |  |                            |                      |
| LCU 2-1<br>(ON CALL)   | SP Plt (-) w/preloaded equip.<br>Det. Engr Plt w/preloaded equip.<br>Det. BMU w/preloaded equip<br>Det. B 1/13 w/preloaded equip | 40<br>3<br>---<br>3<br>46+ |                      |
| -----                  |  |                            |                      |
| LCM-8 3-1<br>(ON CALL) | Floating Dump w/ammc, Engr supply  |                            |                      |
| -----                  |  |                            |                      |
| LCM-8 4-1<br>(ON CALL) | Det. B 1/13 w/M-35, M-105  | 2                          | 4-2<br>X<br>4-1      |
| LCM-8 4-2<br>(ON CALL) | Det. B 1/13 w/M-35, M-107  | 2                          |                      |
| -----                  |  |                            |                      |
| LCM-6 5-1<br>(ON CALL) | Gun # 1, B 1/13 (w/M-35)   | 10                         | 5-6                  |

C-5-1

S E C R E T

## S E C R E T

|                        |                          |    |          |
|------------------------|--------------------------|----|----------|
| LCM-6 5-2<br>(ON CALL) | Gun # 2, B 1/13 (w/M-35) | 10 | X<br>5-4 |
| LCM-6 5-3<br>(ON CALL) | Gun # 3, B 1/13 (w/M-35) | 10 | X<br>5-2 |
| LCM-6 5-4<br>(ON CALL) | Gun # 4, B 1/13 (w/M-35) | 10 | X<br>5-1 |
| LCM-6 5-5<br>(ON CALL) | Gun # 5, B 1/13 (w/M-35) | 10 | X<br>5-3 |
| LCM-6 5-6              | Gun # 6, B 1/13 (w/M-35) | 10 | X<br>5-5 |

C-5-2

S E C R E T

S E C R E T

Copy of 65 Copies  
Blk 2/26  
USS Okinawa  
121600R Dec 1968

## APPENDIX 6 to Annex C (Gen Ltr, Misc) to Operation Order 1200-68

## SERIAL ASSIGNMENT TABLE

| SERIAL | UNIT                       | EQUIPMENT                  | A/S<br>NO/TYPE       | SHIP  | REMARKS |
|--------|----------------------------|----------------------------|----------------------|-------|---------|
| 100    | 1st Plt, E Co              | Normal Combat              | 9 UH-34D             | LPD-6 |         |
| 101    | 2d Plt CP E Co             | Normal Combat              | 10 UH-34D            | LPD-6 |         |
| 102    | 3d Plt, E Co               | Normal Combat              | 9 UH-34D             | LPD-6 |         |
| 110    | 1st Plt, F Co              | Normal Combat              | 9 UH-34D             | LPH-3 |         |
| 111    | 2d Plt F CP                | Normal Combat              | 11 UH-34D            | LPH-3 |         |
| 112    | 3d Plt F Co                | Normal Combat              | 9 UH-34D             | LPH-3 |         |
| 113    | 1st Plt G Co               | Normal Combat              | 10 UH-34D            | LPH-3 |         |
| 114    | 2d Plt G CP                | Normal Combat              | 10 UH-34D            | LPH-3 |         |
| 115    | 3d Plt G Co                | Normal Combat              | 7 UH-34D             | LPH-3 |         |
| 116    | 1st Plt H Co               | Normal Combat              | 10 UH-34D            | LPD-6 |         |
| 131    | 2d Plt H Co                | Normal Combat              | 8 UH-34D             | LPD-6 |         |
| 132    | 3d Plt H Co                | Normal Combat              | 8 UH-34D             | LPD-6 |         |
| 133    | 106mm Plt                  | 4 106mm RL<br>2 106mm Ammo | 11 UH-34D            |       |         |
| 141    | 106mm Plt                  | 2 106mm RL<br>2 106mm Ammo | 10 UH-34D            | LPD-6 |         |
| 142    | 106mm Plt                  | 2 106mm RL<br>2 106mm Ammo | 10 UH-34D            | LPD-6 |         |
| 143    | 106mm Plt                  | 2 106mm RL<br>2 106mm Ammo | 10 UH-34D            | LPD-6 |         |
| 144    | 106mm Plt                  | 2 106mm RL<br>2 106mm Ammo | 10 UH-34D            | LPD-6 |         |
| 145    | 106mm Plt                  | 2 106mm RL<br>2 106mm Ammo | 10 UH-34D            | LPD-6 |         |
| 146    | 106mm Plt                  | 2 106mm RL<br>2 106mm Ammo | 10 UH-34D            | LPD-6 |         |
| 147    | 106mm Plt                  | 2 106mm RL<br>2 106mm Ammo | 10 UH-34D            | LPD-6 |         |
| 148    | 106mm Plt                  | 2 106mm RL<br>2 106mm Ammo | 10 UH-34D            | LPD-6 |         |
| 149    | 106mm Plt                  | 2 106mm RL<br>2 106mm Ammo | 10 UH-34D            | LPD-6 |         |
| 150    | 106mm Plt                  | 2 106mm RL<br>2 106mm Ammo | 10 UH-34D            | LPD-6 |         |
| 151    | 106mm Plt                  | 2 106mm RL<br>2 106mm Ammo | 10 UH-34D            | LPD-6 |         |
| 152    | 106mm Plt                  | 2 106mm RL<br>2 106mm Ammo | 10 UH-34D            | LPD-6 |         |
| 153    | 106mm Plt                  | 2 106mm RL<br>2 106mm Ammo | 10 UH-34D            | LPD-6 |         |
| 154    | 106mm Plt                  | 2 106mm RL<br>2 106mm Ammo | 10 UH-34D            | LPD-6 |         |
| 155    | 106mm Plt                  | 2 106mm RL<br>2 106mm Ammo | 10 UH-34D            | LPD-6 |         |
| 156    | 106mm Plt                  | 2 106mm RL<br>2 106mm Ammo | 10 UH-34D            | LPD-6 |         |
| 157    | 106mm Plt                  | 2 106mm RL<br>2 106mm Ammo | 10 UH-34D            | LPD-6 |         |
| 158    | 106mm Plt                  | 2 106mm RL<br>2 106mm Ammo | 10 UH-34D            | LPD-6 |         |
| 159    | 106mm Plt                  | 2 106mm RL<br>2 106mm Ammo | 10 UH-34D            | LPD-6 |         |
| 160    | 106mm Plt                  | 2 106mm RL<br>2 106mm Ammo | 10 UH-34D            | LPD-6 |         |
| 161    | 106mm Plt                  | 2 106mm RL<br>2 106mm Ammo | 10 UH-34D            | LPD-6 |         |
| 162    | 106mm Plt                  | 2 106mm RL<br>2 106mm Ammo | 10 UH-34D            | LPD-6 |         |
| 163    | 106mm Plt                  | 2 106mm RL<br>2 106mm Ammo | 10 UH-34D            | LPD-6 |         |
| 164    | 106mm Plt                  | 2 106mm RL<br>2 106mm Ammo | 10 UH-34D            | LPD-6 |         |
| 165    | 106mm Plt                  | 2 106mm RL<br>2 106mm Ammo | 10 UH-34D            | LPD-6 |         |
| 166    | 106mm Plt                  | 2 106mm RL<br>2 106mm Ammo | 10 UH-34D            | LPD-6 |         |
| 167    | "A" Cmd Grp<br>+ W/1/12 CP | Normal Combat              | 15UH-34D<br>12UH-34D | LPH-3 |         |

C-6-1

S E C R E T

S E C R E T

Copy of 65 Copies  
BLT 2/26  
USS Okinawa  
121600H Dec 1968

APPENDIX 7 to Annex C (Landing Plan) to Operation Order 120D-68

HELITEAM WAVE AND SERIAL ASSIGNMENT TABLE

| WAVE | HELITEAM FLIGHT |  | UNIT    | PERS | WEIGHT |        | TOTAL  | LZ      | REMARKS |
|------|-----------------|--|---------|------|--------|--------|--------|---------|---------|
|      | SERIAL          |  |         |      | EQPT   | PERS   |        |         |         |
| 1    | MURRY 101-109   |  | Co H    | 45   |        | 9000   |        | Vulture |         |
|      | 130/1-9         |  |         |      |        |        |        |         |         |
|      | MURRY 110-118   |  | Co F    | 45   |        | 9000   | 9000   | Eagle   |         |
|      | 110/1-9         |  |         |      |        |        |        |         |         |
| 2    | MURRY 201-209   |  | Co H    | 45   |        | 9000   | 9000   | Vulture |         |
|      | 130/10-13       |  |         |      |        |        |        |         |         |
|      | MURRY 210-218   |  | Co F    | 45   |        | 9000   | 9000   | Eagle   |         |
|      | 111/1-9         |  |         |      |        |        |        |         |         |
| 3    | MURRY 301-309   |  | Co H    | 45   |        | 9000   | 9000   | Vulture |         |
|      | 131/6-8         |  |         |      |        |        |        |         |         |
|      | MURRY 310-318   |  | Co F    | 45   |        | 9000   | 9000   | Eagle   |         |
|      | 111/10-11       |  |         |      |        |        |        |         |         |
| 4    | MURRY 401-402   |  | Co H    | 10   |        | 2000   | 2000   | Vulture |         |
|      | 132/7-8         |  |         |      |        |        |        |         |         |
|      | MURRY 403-404   |  | Co F    | 10   |        | 2000   | 2000   | Eagle   |         |
|      | 112/8-9         |  |         |      |        |        |        |         |         |
|      | MURRY 405-416   |  | Co G    | 60   |        | 12,000 | 12,000 | Hawk    |         |
|      | 120/1-10        |  |         |      |        |        |        |         |         |
| 5    | MURRY 501-508   |  | Co G    | 40   |        | 8000   | 8000   | Hawk    |         |
|      | 121/3-10        |  |         |      |        |        |        |         |         |
|      | MURRY 509-516   |  | Co H    | 40   |        | 8000   | 8000   | Hawk    |         |
|      | 100/1-8         |  |         |      |        |        |        |         |         |
| 6    | MURRY 601-616   |  | "A" Cmd | 60   |        | 12000  | 12000  | Hawk    |         |
|      | 167/1-12        |  |         |      |        |        |        |         |         |
|      | 101/1-3         |  | Co E    | 20   |        | 4000   | 4000   | Hawk    |         |

C-7-1

S E C R E T

S E C R E T

WAVE AND SERIAL ASSIGNMENT TABLE

| HORIZONAL FLIGHT |   |        |      | WEIGHT     |             | TOTAL | LZ      | REMARKS |
|------------------|---|--------|------|------------|-------------|-------|---------|---------|
| WAVE             | SERIAL                                      | UNIT   | EQPT | PERS       | EQPT        |       |         |         |
| 7                | MURRY 701-716<br>101/4-10<br>102/1-9        | Co E   | 80   |            | 1600        | 16000 | Hawk    |         |
| 8                | MURRY 801-813<br>150/1-3 151/1-5<br>152/1-5 | 81mm   | 45   | 4 81's     | 9000 2000   | 11000 | Vulture |         |
|                  |   |        |      | 2M-274(x)  |             |       |         |         |
| 9                | MURRY 901-912<br>150/4-5 153/1-5<br>154/1-5 | 81mm   | 45   | 4 81's     | 9000 200    | 11000 | Vulture |         |
|                  |   |        |      | 2M-274(x)  |             |       |         |         |
|                  | MURRY 1001-1010<br>140/1-4                  | 106mm  | 5    | 1 106 RR   | 18000 2200  | 4000  | Vulture |         |
|                  |   |        |      | 2M-274(x)  |             |       |         |         |
| 10               | MURRY 1101-1104<br>140/5-8                  | 106mm  | 5    | 1 106RR    | 1500 100    | 1600  | Vulture |         |
|                  | MURRY 1201-1210<br>140/7-11<br>141/1-1      | 106mm  | 9    | 3 106RR    | 1600 3900   | 5700  | Hawk    |         |
|                  |   |        |      | 3M-274(x)  |             |       |         |         |
|                  | MURRY 1301-1314<br>141/4-7                  | 106mm  | 5    | 1 106RR    | 1000 2200   | 3200  | Eagle   |         |
|                  |   |        |      | 2M-274(x)  |             |       |         |         |
| 11               | MURRY 1401-1403<br>141/8-10                 | 106mm  | 7    | 1 106RR    | 1400 1300   | 2700  | Eagle   |         |
|                  |   |        |      | 1M-274(x)  |             |       |         |         |
| ON CALL SERIAL   | 122/1-7                                     | Co G   | 35   |            | 7000        | 7000  | TBA     |         |
| ON CALL SERIALS  | 160-2                                       |        |      |            | 12000 14000 | 26000 | TBA     |         |
|                  | 161/1-4                                     | W/1/12 | 62   | 6 4.2 Mtrs |             |       |         |         |
|                  | 162/1-4                                     |        |      | and Ammo   |             |       |         |         |
|                  | 163/1-4                                     |        |      |            |             |       |         |         |
|                  | 164/1-4                                     |        |      |            |             |       |         |         |
|                  | 165/1-4                                     |        |      |            |             |       |         |         |
|                  | 166/1-5                                     |        |      |            |             |       |         |         |

C-7-2

S E C R E T

S E C R E T

Copy of 65 Copies  
BLT 2/26  
USS Okinawa  
121600H Dec 1968

## APPENDIX 8 to Annex C (Landing Plan) to Operation Order 120D-68

| HELICOPTER EMPLOYMENT AND ASSAULT LANDING TABLE |                       |                |                   |       |      |        |      |    |          |
|---|-----------------------|----------------|-------------------|-------|------|--------|------|----|----------|
| WAVE  | HELO UNIT<br>FLT. NO. | NO/TYPE<br>A/C | REPORT<br>FROM TO |       | LOAD | LAUNCH | LAND | IZ | UNIT     |
| 1   | MURRAY<br>101-109     | 9 UH-34D       | LPH-3             | LPD-6 | L-45 | L-20   | L Hr | V* | Co H     |
|   | MURRAY<br>110-118     | 9 UH-34D       | LPH-3             | LPH-3 | L-30 | L-20   | L Hr | E* | Co F     |
| 2   | MURRAY<br>201-209     | 9 UH-34D       | LPH-3             | LPD-6 |      |        |      | V* | Co H     |
|   | MURRAY<br>210-218     | 9 UH-34D       | LPH-3             | LPH-3 |      |        |      | E* | Co F     |
| 3   | MURRAY<br>301-309     | 9 UH-34D       | LPH-3             | LPD-6 |      |        |      | V* | Co H     |
|   | MURRAY<br>310-318     | 9 UH-34D       | LPH-3             | LPH-3 |      |        |      | E* | Co F     |
| 4   | MURRAY<br>401-402     | 2 UH-34D       | LPH-3             | LPD-6 |      |        |      | V* | Co H     |
|   | MURRAY<br>403-404     | 2 UH-34D       | LPH-3             | LPH-3 |      |        |      | E* | Co F     |
|   | MURRAY<br>405-416     | 12 UH-34D      | LPH-3             | LPH-3 |      |        |      | H* | Co G     |
| 5   | MURRAY<br>501-508     | 8 UH-34D       | LPH-3             | LPH-3 |      |        |      | H* | Co G     |
|   | MURRAY<br>509-516     | 8 UH-34D       | LPH-3             | LPD-6 |      |        |      | H* | Co E     |
| 6   | MURRAY<br>601-612     | 12 UH-34D      | LPH-3             | LPH-3 |      |        |      | H* | A Cmd    |
|   | MURRAY<br>613-616     | 4 UH-34D       | LPH-3             | LPD-6 |      |        |      | H* | Co E     |
| 7   | MURRAY<br>701-716     | 16 UH-34D      | LPH-3             | LPD-6 |      |        |      | H* | Co E     |
| 8   | MURRAY<br>801-813     | 13 UH-34D      |                   | LPH-3 |      |        |      | V* | 81mm Plt |

C-8-1

S E C R E T

\*V-Vulture  
\*E-Eagle  
\*H-Hawk

SECRET

APPENDIX S to Annex C (Landing Plan) to Operation Order 120D-68

HELICOPTER EMPLOYMENT AND ASSAULT LANDING TABLE

|    |                     |           |       |      |             |
|----|---------------------|-----------|-------|------|-------------|
| 9  | MURRAY<br>901-912   | 12 UH-34D | LPD-6 | V*   | 81mm Plt    |
|    | MURRY<br>913-916    | 4 UH-34D  | LPH-3 | V*   | 106 RR Plt  |
| 10 | MURRAY<br>1001-1002 | 2 UH-34D  | LPH-3 | V*   | 106 RR Plt  |
|    | MURRAY<br>1003-1007 | 5 UH-34D  | LPH-3 | H*   | 106 RR Plt  |
|    | MURRAY<br>1008-1010 | 3 UH-34D  | LPD-6 | H*   | 106 RR Plt  |
|    | MURRAY<br>1011-1014 | 4 UH-34D  | LPD-6 | H*   | 106 RR Plt  |
| 11 | MURRAY<br>1101-1103 | 3 UH-34D  | LPD-6 | H*   | 106 RR Plt  |
|    | ON CALL             | 7 UH-34D  | LPH-3 | TBA* | Sparrowhawk |
|    | ON CALL             | 27 UH-34D | LPD-6 | TBA* | W/1/12      |

12-11-68  
 12-11-68  
 12-11-68  
 12-11-68

C-8-2

SECRET

S E C R E T

Copy No. \_\_\_\_\_ of 65 Copies

BLT 2/26

USS OKINAWA (LPH-3)

121000H December 1968

Annex Z (Distribution) to Operation Order 120D-68

Time Zone: H

| <u>UNIT</u>                       | <u>NUMBER OF COPIES</u> | <u>COPY NUMBER</u> |
|-----------------------------------|-------------------------|--------------------|
| CTF 79                            | 2                       | 1-2                |
| CTG 79.4                          | 10                      | 3-12               |
| CTF 76                            | 5                       | 13-17              |
| CTG 76.4                          | 20                      | 18-37              |
| CO HMM 362                        | 2                       | 38-39              |
| CG III MAF                        | 1                       | 40                 |
| CG AMERICAL DIV                   | 1                       | 41                 |
| CG 2ND ROKMC BRIGADE              | 1                       | 42                 |
| <u>BLT</u>                        |                         |                    |
| S-1                               | 1                       | 43                 |
| S-2                               | 1                       | 44                 |
| S-3                               | 2                       | 45-46              |
| S-4                               | 1                       | 47                 |
| Naval Gunfire Liaison Officer     | 1                       | 48                 |
| Communication Officer             | 1                       | 49                 |
| Company E                         | 1                       | 50                 |
| Company F                         | 1                       | 51                 |
| Company G                         | 1                       | 52                 |
| Company H                         | 1                       | 53                 |
| H&S Company, 2nd Bn, 26th Marines | 1                       | 54                 |

Z-1

S E C R E T

S E C R E T

## Annex Z (Continued)

| <u>UNIT</u>                       | <u>NUMBER OF COPIES</u> | <u>COPY NUMBER</u> |
|-----------------------------------|-------------------------|--------------------|
| Btry B, 1st Bn, 13th Marines      | 1                       | 55                 |
| Mortar Btry, 1st Bn, 12th Marines | 1                       | 56                 |
| 81mm Mortar Plt                   | 1                       | 57                 |
| Logistic Support Unit             | 1                       | 58                 |
| 1st Plt, B Co, 1st AmTrac Bn      | 1                       | 59                 |
| 2nd Plt, C Co, 3rd Engr Bn        | 1                       | 60                 |
| 2nd Plt, H&S Co, 3rd SP Bn        | 1                       | 61                 |
| S&C, 2nd Bn, 26th Marines         | 4                       | 62-65              |



D. H. CLARK  
Major, U.S. Marine Corps  
Executive Officer

DISTRIBUTION: Annex Z (Distribution) to Operation Order 120D-68

Z-2

S E C R E T

Copy \_\_\_\_\_ of \_\_\_\_\_ Copies  
BLT 2/26  
USS OKINAWA (LPH-3)  
260800H

FRAG ORDER 75-68

Ref: (a) MAP: HOI AN 64401  
(b) BLT 2/26 OP ORDER 120 D-68 W/Ch I  
(c) SLF COI

Time Zone: H

Task Organization: Annex A (Task Organization) to Reference (b).

### 1. SITUATION

- a. Enemy Forces. Intelligence Brief.
- b. Friendly Forces. See reference (b).
- c. Attachments and Detachments. No change.

### 2. MISSION

BLT 2/26 establishes a cordon surrounding the village of Hien Luong as shown in Annex A (Operation Overlay); assists, as required, in population screening and searching for caches; conducts patrols and ambushes as necessary to protect the integrity of the cordon.

### 3. EXECUTION

- a. Concept of Operations. BLT 2/26 lands four cordon Companies and necessary combat support units by helicopter as shown in Annex B (Landing Plan). BLT 2/26 closes the cordon and assists, as required, in the establishment of a screening center. BLT 2/26 releases one company from cordon positions to patrol throughout the AOA.
- b. Company E (Rein)
  - (1) Land IAW Annex B (Landing Plan).
  - (2) Establish cordon position. (Operation Overlay).
  - (3) Be prepared to employ one section 106mm RA Plt in rear defense role.
  - (4) Conduct search/probe operations in cordon sector of responsibility.
  - (5) Be prepared to adjust lines on PL APPLE to compensate for removal of Co H from cordon.

Tab D

c. Company F. (Rein)

- (1) Land IAW Annex B (Landing Plan).
- (2) Establish cordon position. (Operation Overlay).
- (3) Be prepared to employ one section 106mm RR Plt in rear defense role.
- (4) Conduct search/probe operations in cordon sector of responsibility.
- (5) Be prepared to adjust lines on PL APPLE to compensate for removal of Co H from cordon.

d. Company G (-) (Rein)

- (1) Land IAW Annex B (Landing Plan).
- (2) Establish cordon position. (Operation Overlay).
- (3) Be prepared to employ one section 106mm RR Plt in rear defense role.
- (4) Be prepared to assimilate 3rd Plt (Rein), Co G, into cordon upon release as SLF reserves.
- (5) Be prepared to provide one platoon to assist PRU in moving population to screening center on D+1.
- (6) Conduct search/probe operations in cordon sector of responsibility.
- (7) Be prepared to adjust lines to compensate for removal of Co H from cordon.
- (8) Be prepared to provide local security for screening center.

e. Company H (Rein)

- (1) Land IAW Annex B. (Landing Plan).
- (2) Establish cordon position. (Operation Overlay).
- (3) On order, close cordon to PL APPLE. Move population of Ap Bon (2) and other houses in area to Hien Luong.
- (4) Be prepared to conduct Company patrols, in conjunction with PRU, throughout AOA.

f. 81mm Mortar Plt

- (1) Land IAW Annex B. (Landing Plan).
- (2) D/S BLT 2/26.

g. 106mm RR Plt

- (1) Land IAW Annex B. (Landing Plan).
- (2) Initially D/S BLT 2/26
- (3) Be prepared to attach a section each to Companies E, F, and G.

h. Battery B, 1st Bn, 13th Marines

- (1) Maintain present position.
- (2) D/S BLT 2/26.

i. W Battery (-), 1st Bn, 12th Marines

- (1) On order, land IAW Annex B. (Landing Plan).
- (2) D/S BLT 2/26.

j. 2nd Plt, Co C, 3rd Engr Bn

- (1) Land IAW Annex B. (Landing Plan).
- (2) Initially D/S BLT 2/26. Conduct minesweep of screening center site.
- (3) Be prepared to assist in construction of the screening center.
- (4) Be prepared to attach engineer teams to Companies E, F, G, and H as required.

k. Det. H&S Co, 3rd SP Bn

- (1) Continue to provide support to artillery FSB.
- (2) Continue preparation to establish Blue Beach BSA capable of supporting BLT 2/26.

1. Det, Supply Co, Provisional Serv Bn (EOD).

(1) Land IAW Annex B. (Landing Plan).

(2) D/S BLT 2/26.

m. Security Det., Hq Co, 9th MAB

(1) Land IAW Annex B. (Landing Plan).

(2) Provide POW escort from cordon area to District POW collection point.

n. SIF Reserve

(1) 3rd Plt (Rein), Co G (Sparrow Hawk)

(a) Be prepared for commitment to any sector of cordon.

(b) Be prepared for commitment as security for downed helicopters.

(c) On order, land IAW Annex B, (Landing Plan), and revert to OPCON, Company G.

o. Coordinating Instructions

(1) D-Day 27 December 1968.

(2) L-Hour 0730.

(3) Operation Code Name: Valiant Hunt.

(4) Thrust Points:

(a) Cigarette BT 1955

(b) Beer BT 1450

(c) Toothpaste BT 1745

(d) States BT 2352

(e) Desserts BT 1752

(f) Cars BT 1649

- (5) Annex A (Operation Overlay).
- (6) Annex C (Landing Plan) to reference (b).
- (7) Annex B (Landing Plan).
- (8) Be alert for mines and booby traps.
- (9) Troops are to remain aloof from civilian population.
- (10) Rules of Engagement apply.
- (11) Sparrow Hawk Plt Cdr. report to SLF S-3 at H-60 minutes.
- (12) Companies will carry probes for use in possible subsequent search operation.
- (13) Fire Support Coordination.
  - (a) B Battery is in direct support.
  - (b) W Battery is in direct support.
  - (c) B Battery CO is Artillery Groupment Commander.
  - (d) B Battery Fire Direction Officer will assign battery fire.
  - (e) All artillery F.O.'s and both batteries will be on COF #1 initially (ref. c).
  - (f) COF #2 will be used as directed by the Artillery Groupment Commander.
  - (g) All Artillery F.O.'s will send fire missions to B Battery on COF #1 (ref. c).
  - (h) Save-A-Plane clearance will be obtained from the Supporting Arms Coordination Center by the Fire Support Coordination Center using the Fire Direction Net (ref. c).
  - (i) Corrections will be sent directly to the battery which is firing the mission.

#### 4. ADMINISTRATION AND LOGISTICS

- a. See paragraph 4 of reference (b).

- b. Submit daily ammunition expenditures to S-4A, by 0900 of day following the expenditures.

5. COMMAND AND COMMUNICATIONS-ELECTRONICS

a. See paragraph 5 of reference (b).

b. Reference (c).

c. Command Posts

(1) SLF.....USS Okinawa (LPH-3)

(2) BLT 2/26.....VIC BT 166493

*W. F. Sparks*  
W. F. SPARKS

Lieutenant Colonel, U.S. Marine Corps  
Commanding

ANNEXES:

A. Operation Overlay.

B. Modification to Annex C (Landing Plan) of reference (b).

DISTRIBUTION: Annex Z (Distribution) to reference (b).

S E C R E T

Copy \_\_\_\_\_ of \_\_\_\_\_ Copies  
 BLT 2726  
 USS OKINAWA (LPH-5)  
 252000H Dec 68

Annex B (Modification to Annex C (Landing Plan) to Operation Order 120D-68) to Frag. Order 75-68

Annex C (Landing Plan) of the basic operation order (OPORD 120D-68) will be utilized with the following modifications, for Frag. Order 75-68. These modifications are effective for this operation only and are not to be misconstrued as changes to the basic operation order.

Annex C: Disregard sub-paragraph 1., b, (2).

Appendixes 1, 2, 3, 4, and 5: Disregard in total.

Appendix 6: (1) For serials 164 and 165, modify "1 4.2 Mortar, Ammo/Pers" under EQUIPMENT to read "Personnel".

(2) Disregard serial 166 and reduce helos required for additional ammo from 15 to 8.

(3) The following serials will be added for Frag. Order 75-68:

|                      |               |          |       |
|----------------------|---------------|----------|-------|
| 605 Engr Plt (-)     | Normal Combat | 4 UH-34D | LPH-3 |
| 606 3rd Sqd Engr Plt | Normal Combat | 3 UH-34D | LPD-6 |

Appendix 7: Appendix 7 (Heliteam Wave and Serial Assignment Table), as modified, is reproduced in total as Appendix 1 to Annex B.

Appendix 8: Appendix 8 (Helicopter Employment & Assault Landing Table), as modified, is reproduced in total as Appendix 2 to Annex B.

*W. F. Sparks*  
 W. F. SPARKS

Lieutenant Colonel, U.S. Marine Corps  
 Commanding

Appendixes:

1. Heliteam Wave and Serial Assignments Table
2. Helicopter Employment & Assault Landing Table

Distribution: Annex Z (Distribution) of reference (b)

S E C R E T

S E C R E T

Copy of 65 Copies  
 BLT 2/26  
 USS Okinawa  
 260800H Dec 1968

APPENDIX 1 to Annex B (Landing Plan) to Frag Order 75-68.

HELITEAM WAVE AND SERIAL ASSIGNMENT TABLE

| WAVE | <u>HELITEAM FLIGHT</u><br>SERIAL             | UNIT     | PERS | EQPT | TOTAL WEIGHT        | LZ   |
|------|--|----------|------|------|---------------------|------|
| 1    | MURRAY 101-108<br>110/1-8                    | CoF      | 40   | N.C. | All Loads 1200#/ALC | JUDY |
|      | MURRAY 109-116<br>130/1-8                    | CoH      | 40   | N.C. |                     | JOAN |
| 2    | MURRAY 201-208<br>110/9 111/1-7              | CoF      | 40   | N.C. |                     | JUDY |
|      | MURRAY 209-216<br>130/9-13 131/1-3           | CoH      | 40   | N.C. |                     | JOAN |
| 3    | MURRAY 301-308<br>111/8-11 112/1-4           | CoF      | 40   | N.C. |                     | JUDY |
|      | MURRAY 309-316<br>131/4-7 132/1-4            | CoH      | 40   | N.C. |                     | JOAN |
| 4    | MURRAY 401-408<br>112/5-9 120/1-3            | Co's F/G | 40   | N.C. |                     | JUDY |
|      | MURRAY 409-416<br>132/5-8 100/1-4            | Co's H/E | 40   | N.C. |                     | JOAN |
| 5    | MURRAY 501-508<br>120/4-8 121/1-3            | CoG      | 40   | N.C. |                     | JUDY |
|      | MURRAY 509-516<br>100/5-9 101/1-3            | CoE      | 40   | N.C. |                     | JOAN |
| 6    | MURRAY 601-608<br>121/4-10 167/1             | CoG      | 40   | N.C. |                     | JUDY |
|      | MURRAY 609-616<br>122/4-7 150/4-5<br>153/1-2 | CoE/81's | 38   | N.C. |                     | JOAN |

B-1-1

S E C R E T

S E C R E T

HELITEAM WAVE AND SERIAL ASSIGNMENT TABLE

| WAVE    | HELITEAM FLIGHT<br>SERIAL   | UNIT       | PERS | EQPT          | TOTAL WEIGHT        | LZ  |
|---------|---|------------|------|---------------|---------------------|---|
| 7       | MURRAY 701-708<br>167/2-9   | CP         | 40   | N.C.          | All Loads 1200#/ALC | JUDY  |
|         | MURRAY 709-716<br>153/1-5 154/1-3                                       | 81's       | 32   | N.C.          |                     | JOAN  |
| 8       | MURRAY 801-808<br>167/10-13 140/1-4                                     | CP/106's   | 20   |               |                     | JUDY  |
|         | MURRAY 809-816<br>154/4-5 605/1-4<br>141/1-Z                            | 81's/Engrs | 32   |               |                     | JOAN  |
| 9       | MURRAY 901-907<br>140/5-11  | 106's      | 12   | (4Ext)        |                     | JUDY  |
|         | MURRAY 908-916<br>150/1-3 151/1-5<br>152/1                              | 81's       | 47   |               |                     | JOAN  |
| 10      | MURRAY 1001-1008<br>141/3-10  | 106's      | 15   | (4Ext)        |                     | JOAN  |
|         | MURRAY 1009-1011<br>606/1-3   | Engrs      |      |               |                     | JOAN  |
|         | MURRAY 1012-1015<br>152/2-5   | 81's       |      |               |                     | JOAN  |
| ON CALL | 122/1-7   | CoG        | 35   | (Sparrowhawk) |                     | TBA   |
| ON CALL | 160/1<br>161/1-4<br>162/1-4<br>163/1-4<br>164/1-4<br>165/1-4<br>168/1-8 | 4.2's      | 60   | N.C./Ammo     |                     | TBA<br>TBA<br>TBA<br>TBA<br>TBA<br>TBA<br>TBA |

*W. F. Sparks*  
W. F. SPARKS

Lieutenant Colonel, U.S. Marine Corps  
Commanding

Distribution: Annex Z (Distribution) of reference (b)

B-1-2

S E C R E T

SECRET

Copy of 65 Copies  
BLT 2/26  
USS Okinawa  
260800H Dec 1968

APPENDIX 2 to Annex B (Landing Plan) to Frag Order 75-68.

HELICOPTER EMPLOYMENT AND ASSAULT LANDING TABLE

| WAVE | HELO UNIT<br>FMT NO | NO/TYPE<br>A/C | FROM  | REPORT<br>TO | LOAD | LAUNCH | LAND | LZ   | UNIT                   |
|------|---------------------|----------------|-------|--------------|------|--------|------|------|------------------------|
| 1    | MURRAY<br>101-108   | EH-34D         | LPH-3 | LPH-3        | L-30 | L-20   | L-hr | JUDY | CoF                    |
|      | 109-116             | 8 "            | "     | LPD-6        | L-45 | L-20   | L-hr | JOAN | CoH                    |
| 2    | 201-208             | 8 "            | "     | LPH-3        |      |        |      | JUDY | CoF                    |
|      | 209-216             | 8 "            | "     | LPD-6        |      |        |      | JOAN | CoH                    |
| 3    | 301-308             | 8 "            | "     | LPH-3        |      |        |      | JUDY | CoF                    |
|      | 309-316             | 8 "            | "     | LPD-6        |      |        |      | JOAN | CoH                    |
| 4    | 401-408             | 8 "            | "     | LPH-3        |      |        |      | JUDY | F/G                    |
|      | 409-416             | 8 "            | "     | LPD-6        |      |        |      | JOAN | H/E                    |
| 5    | 501-508             | 8 "            | "     | LPH-3        |      |        |      | JUDY | G                      |
|      | 509-516             | 8 "            | "     | LPD-6        |      |        |      | JOAN | E                      |
| 6    | 601-608             | 8 "            | "     | LPH-3        |      |        |      | JUDY | G                      |
|      | 609-616             | 8 "            | "     | LPD-6        |      |        |      | JOAN | E/81's                 |
| 7    | 701-708             | 8 "            | "     | LPH-3        |      |        |      | JUDY | CP                     |
|      | 709-716             | 8 "            | "     | LPD-6        |      |        |      | JOAN | 81's                   |
| 8    | 801-808             | 8 "            | "     | LPH-3        |      |        |      | JUDY | CP/106's               |
|      | 809-816             | 8 "            | "     | LPD-6        |      |        |      | JOAN | Engrs<br>81's<br>106's |
| 9    | 901-907             | 7 "            | "     | LPH-3        |      |        |      | JUDY | 106's                  |
|      | 908-916             | 9 "            | "     | LPD-6        |      |        |      | JOAN | 81's                   |
| 10   | 1001-1008           | 8 "            | "     | LPD-6        |      |        |      | JOAN | 106's                  |
|      | 1009-1011           | 3 "            | "     | LPH-3        |      |        |      | JOAN | Engrs                  |

B-2-1

SECRET

S E C R E T

HELICOPTER EMPLOYMENT AND ASSAULT LANDING TABLE

| <u>WAVE</u> | <u>HELO UNIT</u><br><u>FLT NO</u> | <u>NO/TYPE</u><br><u>A/C</u> | <u>FROM</u> | <u>REPORT</u><br><u>TO</u> | <u>LOAD</u> | <u>LAUNCH</u> | <u>LAND</u> | <u>LZ</u> | <u>UNIT</u>  |
|-------------|-----------------------------------|------------------------------|-------------|----------------------------|-------------|---------------|-------------|-----------|--------------|
|             | 1012-1015                         | 4UH-34D                      | LPH-3       | LPH-3                      |             |               |             |           | JOAN 81's    |
| ON CALL     | 7                                 | "                            | "           | LPH-3                      | TBA         | TBA           | TBA         | TBA       | Sparrow Hawk |
| ON CALL     | 21                                | "                            | "           | LPD-6                      | TBA         | TBA           | TBA         | TBA       | 4.2's        |



W. F. SPARKS

Lieutenant Colonel, U. S. Marine Corps  
Commanding

Distribution: Annex Z (Distribution) of reference (b).

B-2-2

S E C R E T

CONFIDENTIAL

2d Battalion, 26th Marines

## JOURNAL

| IN   | OUT | SER # | DTG     | INCIDENTS, MESSAGES & ORDERS   | ACTION |
|------|-----|-------|---------|--|--------|
| 0615 |     | 1     | 010530H | SITREP # 41  | FSR    |
| 0925 |     | 2     | 010700H | SptRpt: At BT 025606 WWH while checking area of last nights action found one VC hiding in a tunnel. When marines approached he called Chieu Hoi. It is evident that he called Chieu Hoi to avoid being shot. He is a male 20 years old. Will interrogate while awaiting transport to PH. | FSR    |
| 1015 |     | 3     | 011015H | DAY ACTS for 01 December.  | FSR    |
| 1235 |     | 4     | 011200H | SITREP # 42  | FSR    |
| 1305 |     | 5     | 011250H | SptRpt: At BT 035601 WWF spotted 6 personal running from them. Took under fire with M-16 and M-79. Check of the area showed them to be VN civilians. All 6 were emergency Medevac.   | FSR    |
| 1515 |     | 6     | 011500H | Message from WW REAR.  | FS     |
| 1710 |     | 7     | 011645H | NIGHT ACTS for 01 December.  | FSR    |
| 1734 |     | 8     | 011700H | SptRpt: At BT 017600 WWG spotted 2 VC sitting on top of a bunker watching arty being fired in the area. They were taken under fire with 106's resulting in 2 VC KIA (c).   | FSR    |
| 1800 |     | 9     |         |  |        |

DECLASSIFIED

DECLASSIFIED

Tab E

CONFIDENTIAL

2d Battalion, 26th Marines

## JOURNAL

| IN   | OUT | SER # | DTG     | INCIDENTS, MESSAGES & ORDERS  | ACTION |
|------|-----|-------|---------|---|--------|
| 1839 |     | 9     | 011630H | SptRpt: WWF at BT 027600 found a 155mm round in a bunker. Blown in place with C-4.  | FSR    |
| 1900 |     | 10    | 011800H | SITREP # 43   | FSR    |
| 1930 |     | 11    | 011830H | SptRpt: At BT 039603 WWF saw movement which consisted of 5 persons. WWF followed and heard movement in a house nearby. A M-26 grenade was thrown resulting in 9 civilian WIA and 3 enemy WIA. All were Medevaced.           | FSR    |
| 2330 |     | 12    | 012330H | SITREP # 44   | FSR    |
| 0020 |     | 13    | 020010H | SptRpt: At BT 039612 WW CP spotted 2 VC and Took under fire with small arms. This resulted in 1 VC KIA (c). He was carrying one Chi-Com grenade and documents. Documents were turned over to S-2 and the grenade was blown. | FSR    |
| 0030 |     | 14    | 020030H | SptRpt: WWG at BT 018599 while conducting an arty mission heard 3 secondary explosions.   | FSR    |
| 0615 |     | 15    | 020600H | SITREP # 45   | FSR    |
| 0955 |     | 16    | 020935H | SptRpt: At BT 044616 a man from WWF walked into a friendly unmarked mine field while following a blood trail from last night  |        |

DECLASSIFIED

DECLASSIFIED

CONFIDENTIAL

## 2d Battalion, 26th Marines

## JOURNAL

| IN   | OUT  | SER # | DTG      | INCIDENTS, MESSAGES & ORDERS   | ACTION |
|------|------|-------|----------|--|--------|
|      |      |       |          | action. He was a priority Medevac.   | FSR    |
| 1045 |      | 17    | 021145H  | SptRpt: At BT 026606 WWH found 4 concrete vats of 250 pounds rice each. Rice taken to H CP for Medevac.  | FSR    |
| 1200 |      | 18    | 021155H  | SITREP # 46  | FSR    |
| 1840 |      | 19    | 021445H  | SptRpt: At BT 022605 WWH spotted 2 VC. Took under fire with small arms and LAAW resulting in 2 VC KIA (c).                                       | FSR    |
| 1850 |      | 20    | 021830H  | SITREP # 47  | FSR    |
| 2155 |      | 21    | 022050H  | SptRpt: At BT 019602 WWH spotted 2 VC. An 81 mission was called resulting in 1 VC KIA(c).  | FSR    |
| 2200 |      | 22    | 022055H  | SptRpt: At BT 025606 WWH spotted 6 or 7 VC. Took under fire with small arms which resulted in 3 VC KIA(c). WWH ambush relocated to cover bodies. | FSR    |
| 2330 |      | 23    | 022330 H | SITREP # 48  | FSR    |
|      | 0015 | 24    | 022358H  | Message from WW Rear to WW Forward.  | FSR    |
| 0040 |      | 25    | 031220H  | SptRpt: At BT 043622 WWW was taken under fire by squad sized VC unit. Fire was returned with small arms and M-79.                                | FSR    |
| 0650 |      | 26    | 030530H  | SITREP # 49  | FSR    |

DECLASSIFIED

DECLASSIFIED

CONFIDENTIAL

2d Battalion, 26th Marines

## JOURNAL

| IN   | OUT | SER # | DTG     | INCIDENTS, MESSAGES & ORDERS   | ACTION |
|------|-----|-------|---------|--|--------|
| 1010 |     | 27    | 030930H | SptRpt: At BT 022605 WWH saw approximately 4 VC. Fired M-79 and 60mm with unknown results.   | FSR    |
| 1225 |     | 28    | 031150H | SptRpt: At BT 024598 WWF captured one NVA who was minorly injured. Is being held at WWF for questioning while awaiting Medevac to PH.          | FSR    |
| 1233 |     | 29    | 031200H | SptRpt: REFERENCE TO # 28. Captured NVA is 24 year old Sgt.  | FSR    |
| 1242 |     | 30    | 031225H | SITREP # 50  | FSR    |
| 1530 |     | 31    | 031400H | SptRpt: At BT 024601 WWG found a small quantity of propoganda type documents in a hole on the river bank. Documents to be sent to WW CP.       | FSR    |
| 1625 |     | 32    | 031440H | NIGHT ACTS for 03 December.  | FSR    |
| 1700 |     | 33    | 031110H | SptRpt: REFERENCE # 28. Captured NVA had the Following items in his possession: clothes, food, and a wallet with documents.                    | FSR    |
| 1724 |     | 34    | 031630H | SptRpt: At BT 024606 WWH spotted VC running. VC was carrying weapon that was approx. 8" longer than AK-47. WWH followed with negative results. | FSR    |
| 1727 |     | 35    | 031700H | NIGHT ACTS of KMC for 03 December.   | FSR    |
| 1755 |     | 36    | 031530H | SptRpt: At BT 023599 WWF while on patrol found trench line approx.   |        |

DECLASSIFIED

DECLASSIFIED

CONFIDENTIAL

2d Battalion, 26th Marines

## JOURNAL

| IN   | OUT | SER # | DTG     | INCIDENTS, MESSAGES & ORDERS                                       | ACTION |
|------|-----|-------|---------|--|--------|
|      |     |       |         | 10 meters from the river bank. It measured 2' X 3' X 400 meters.   |        |
|      |     |       |         | At BT 025598 WWF patrol found body of dead VC and one 155mm round. |        |
|      |     |       |         | Round was blown in place. WWF patrol also found: photos, ID's,     |        |
|      |     |       |         | 9mm pistol clip (loaded), map, food, record book, shower shoes,    |        |
|      |     |       |         | 3 battle dressings, unknown pills and medication. All were         |        |
|      |     |       |         | medevaced to WW.   | FSR    |
| 1801 |     | 37    | 031740H | SITREP # 51  | FSR    |
| 2111 |     | 38    | 032030H | SptRpt: At BT 024602 WWG had movement. Squad Leader threw M-26     |        |
|      |     |       |         | which fell short resulting one USMC Medevac.                       | FSR    |
| 0010 |     | 39    | 032350H | SITREP # 52  | FSR    |
| 0545 |     | 40    | 040530H | SITREP # 53  | FSR    |
| 1210 |     | 41    | 041120H | SptRpt: At BT 023601 WWG spotted 1 VC. Took under fire with        |        |
|      |     |       |         | small arms resulting in 1 VC KIA(c).                               | FSR    |
| 1217 |     | 42    | 041120H | SptRpt: At BT 021606 WWH while working in a sweep found 9 NVA      |        |
|      |     |       |         | KIA(c). This was believed to be a result of an earlier fire fight. | FSR    |
| 1220 |     | 43    | 041130H | SITREP # 54  | FSR    |
| 1510 |     | 44    | 041510H | SptRpt: At BT 020605 WWH took sniper fire from their rear.         |        |

DECLASSIFIED

DECLASSIFIED

CONFIDENTIAL

2d Battalion, 26th Marines

## JOURNAL

| IN   | OUT | SER # | DTG     | INCIDENTS, MESSAGES & ORDERS   | ACTION |
|------|-----|-------|---------|--|--------|
|      |     |       |         | Small arms fire was returned resulting in 1 VC KIA(c).   | FSR    |
| 1555 |     | 45    | 041500H | SptRpt: At BT 021601 WWG took sniper fire. Small arms fire was returned resulting in 1 VC KIA(c).  | FSR    |
| 1610 |     | 46    | 041600H | SptRpt: At BT 021601 WWg observed 1 NVA sitting on bunker observing friendly arty mission. Took under fire with LAAW. NVA was seen hit and going down.   | FSR    |
| 1630 |     | 47    | 041620H | SITREP:# 55  | FSR    |
| 1745 |     | 48    | 041655H | SptRpt: WWf at BT 026607 found 2 graves partiel buried. The grave contained 1 body with bullet hole in the head and the other with shrapnel wounds in stomach, graves were covered after inspection. | FSR    |
| 1747 |     | 49    | 041655H | SptRpt: WWf at BT 026608 found 250 rounds of 7.62 linked ammo and 4 NVA packs in a hole, confiscated for own use.  | FSR    |
| 0050 |     | 50    | 050010H | SITREP:# 56  | FSR    |
| 1148 |     | 51    | 051100H | POS RPT: WME chopped to Trailer Park at 1100H.   |        |
| 1200 |     | 52    | 051125H | SptRpt: At BT 022606 WWH found misc. documents in grass near a grave sight. Documents turned over to PH.   | FSR    |

DECLASSIFIED

DECLASSIFIED

CONFIDENTIAL

2d Battalion, 26th Marines

## JOURNAL

| IN   | OUT | SER # | DTG     | INCIDENTS, MESSAGES & ORDERS   | ACTION |
|------|-----|-------|---------|--|--------|
| 1245 |     | 53    | 051225H | SptRpt: At BT 025405 WWH found a booby trap. It was hidden out of sight in the bushes. The SED was a blasting cap in concrete. Was blown in place.   | FSR    |
| 1300 |     | 54    | 051240H | SITREP # 57  | FSR    |
| 1430 |     | 55    | 051330H | SptRpt: At BT 022600 WWH found twelve 1 man fighting holes, 4 bunkers, and 3 mines. Bunkers were 5' X 8' X 4', made of bamboo and dirt. Mines were boxes 5" by 5" by 12" packed with TNT. All items were blown in place. | FSR    |
| 1549 |     | 56    | 051730H | SITREP # 57  | FSR    |
| 1605 |     | 57    | 051530H | SptRpt: At BT 023605 WWH found five boxes with documents. Also found an electrical operated road mine. Documents were turned over to PH and the mine was blown in place.   | FSR    |
| 1619 |     | 58    | 051601H | SptRpt: WW Rear at BT 937803 saw one suspicious looking VN worker carrying bag. He was stopped and searched. He was carrying a pound and a half of C-4. Turned over to CIT.  | FSR    |
| 1725 |     | 59    | 051550H | NIGHT ACTS for 05 December.  | FSR    |
| 2356 |     | 60    | 052345H | SITREP # 58  | FSR    |

DECLASSIFIED

DECLASSIFIED

CONFIDENTIAL

2d Battalion, 26th Marines

## JOURNAL

| IN   | OUT | SER # | DTG     | INCIDENTS, MESSAGES & ORDERS  | ACTION |
|------|-----|-------|---------|---|--------|
| 0632 |     | 61    | 060600H | SITREP # 60   | FSR    |
| 1019 |     | 62    | 060945H | SptRpt: At BT 022602 WWG found one decapitated NVA. Believed to have been killed in yesterday's action.   | FSR    |
| 1130 |     | 63    | 061100H | Message from WW Rear to WW 3.   | FSR    |
| 1245 |     | 64    | 061230H | SITREP # 61   | FSR    |
| 1538 |     | 65    | 061533H | Message from WW Rear to WW Forward  | FSR    |
| 1715 |     | 66    | 061500H | NIGHT ACTS FOR 06 December.   | FSR    |
| 1815 |     | 67    | 061735H | SITREP # 62   | FSR    |
| 2250 |     | 68    | 062200H | SptRpt: At BT 035601 WWF took fire from 2 VC. Returned fire with small arms resulting in 1 VC KIA(c). Numerous personal articles and 1 AK-47 were found on the body.  | FSR    |
| 0020 |     | 69    | 062355H | SITREP # 63   | FSR    |
| 0600 |     | 70    | 070545H | SITREP # 64   | FSR    |
| 1015 |     | 71    | 070830H | SptRpt: At BT 035601 WWF saw one NVA approaching from the west. Took under fire with M-16 resulting in 1 NVA KIA(c). Dead NVA was carrying M-1 carbine, 2 Chi-Com grenades, cartridge belt, and some documents. | FSR    |

DECLASSIFIED

DECLASSIFIED

DECLASSIFIED

DECLASSIFIED

| IN   | OUT | SER # | DTG     | INCIDENTS, MESSAGES & ORDERS   | ACTION |
|------|-----|-------|---------|--|--------|
| 1535 |     | 72    | 071535H | SptRpt: AT BT 024599 WWG while crossing the Blue in front of WWF set of a box type mine. This resulted in 1 USMC KIA and 6 USMC WIA. All were Medevaced. | FSR    |
| 1600 |     | 73    | 071600H | WWE was chopped to BLT 2/26.   | FSR    |
| 1600 |     | 74    | 071600H | WWG was chopped to BLT 2/26.   | FSR    |
| 1800 |     | 75    | 071800H | BLT 2/26 chopped from 1ST MAR DIV.   | FSR    |
| 1300 |     | 76    | 071300H | WWG chopped to 1/1. -- LATE ENTRY --   | FSR    |

CONFIDENTIAL

## 2d Battalion, 26th Marines

## JOURNAL

| IN | OUT | SER # | DTG    | INCIDENTS, MESSAGES & ORDERS                                  | ACTION |
|----|-----|-------|--------|---|--------|
|    |     | 73    | 151115 | SPECIAL SITREP  | FSR    |
|    |     | 74    | 151250 | Spt Rpt. At BT 152518, gunship working in support of SMF      |        |
|    |     |       |        | wounded 1 civilian who was medevaced to SMR.                  | FSR    |
|    |     | 75    | 151200 | SITREP #1   | FSR    |
|    |     | 76    | 151330 | Message from SM3 to PH3.                                      |        |
|    |     | 77    | 151340 | Message from PH3 to SM3.                                      |        |
|    |     | 78    | 151407 | Spt Rpt. At BT 143509 SME detained 39 VN, holding at SME CP.  | FSR    |
|    |     | 79    | 151310 | Pos Rpt LZ Locations  | FSR    |
|    |     | 80    | 151000 | Spt Rpt At BT149528 SMF found 2 bunkers. Searched then blown. | FSR    |
|    |     | 81    | 151550 | Message from PH to SM6.                                       |        |
|    |     | 82    | 151600 | Message from PH3 to SM3.                                      |        |
|    |     | 83    | 151603 | Message from SM3 to PH3.                                      |        |
|    |     | 84    | 151615 | Spt Rpt At BT 156521 SME picked up 1 VC suspect, had no ID.   |        |
|    |     |       |        | Sent to SM.   | FSR    |
|    |     | 85    | 151250 | Spt Rpt. At BT 143153 SMH spotted 1 man running away in a     |        |
|    |     |       |        | westerly direction. Called in W mission.                      | FSR    |
|    |     | 86    | 151435 | Message from SM3 to PH3.                                      |        |

DECLASSIFIED

DECLASSIFIED

CONFIDENTIAL

2d Battalion, 26th Marines

## JOURNAL

| IN | OUT | SER # | DTG    | INCIDENTS, MESSAGES & ORDERS  | ACTION |
|----|-----|-------|--------|---|--------|
|    |     | 87    | 151640 | Night Acts for 15 Dec.  |        |
|    |     | 88    |        |   |        |
|    |     | 89    | 151745 | Spt Rpt. At BT 146576 SMH captured 1 POW suspect found hiding in a bunker 10m from a hootch. Taken to SM. | FSR    |
|    |     | 90    | 151800 | SITREP #2   | FSR    |
|    |     | 91    | 151835 | Message from SM3 to SM5.  |        |
|    |     | 92    | 152000 | Message from SM3 to PH3.  |        |
|    |     | 93    | 152100 | Message from SM3 to PH3.  |        |
|    |     | 94    | 152145 | Message from SM3 to PH3.  |        |
|    |     | 95    | 152300 | Message from PH3 to SM3.  |        |
|    |     | 96    | 152400 | SITREP #3   | FSR    |
|    |     | 97    | 160600 | SITREP #4   | FSR    |
|    |     | 98    | 160900 | Message from SM3 to SM5.  |        |
|    |     | 99    | 160900 | Message from SM3 to PH3.  |        |
|    |     | 100   | 161045 | Day Acts for SMH.   |        |
|    |     | 101   | 161030 | SPECIAL SITREP  | FSR    |
|    |     | 102   | 161030 | Spt Rpt. At BT 146514 SMH picked up documents and 40 VN   |        |

DECLASSIFIED

DECLASSIFIED

CONFIDENTIAL

## 2d Battalion, 26th Marines

## JOURNAL

| IN | OUT | SER # | DTG    | INCIDENTS, MESSAGES & ORDERS   | ACTION |
|----|-----|-------|--------|--|--------|
|    |     | 103   | 161000 | civilians and 150 lbs of rice. Documents to S-2.   | FSR    |
|    |     | 103   | 161000 | Spt Rpt. At BT 164523 SMG while on patrol found 5 spider holes and 3 L shaped bunkers. Blown with M26.                         | FSR    |
|    |     | 104   | 161045 | Message from SM3 to PH3  |        |
|    |     | 105   | 161045 | Spt Rpt at BT 159523 SME found a VN going through trash pit and tried to run away but was captured and taken to collection pt. | FSR    |
|    |     | 106   | 161235 | Spt Rpt. At BT 145515 SMH found misc documents made of brick and bamboo. Destroyed bunkers.                                    | FSR    |
|    |     | 107   | 161200 | SITREP #5  | FSR    |
|    |     | 108   | 161400 | SPECIAL SITREP   |        |
|    |     | 109   | 161110 | Spt Rpt. At BT 192513 SMH found a total of 14 VN in bunkers. People escorted to collection point.                              | FSR    |
|    |     | 110   | 161700 | Night Acts SME   |        |
|    |     | 111   | 161210 | Spt Rpt. At BT 146516 SMH picked up 3 VN in a hootch which had false walls and bottom. People to collection point.             | FSR    |
|    |     | 112   | 161145 | Spt Rpt. At 146516 SMH was taken under fire by small arms & .30 cal machine gun. SMG returned fire, results unknown.           | FSR    |

DECLASSIFIED

DECLASSIFIED

CONFIDENTIAL

2d Battalion, 26th Marines

## JOURNAL

| IN | OUT | SER # | DTG    | INCIDENTS, MESSAGES & ORDERS  | ACTION |
|----|-----|-------|--------|---|--------|
|    |     | 113   | 161230 | Spt Rpt. At BT 152524 SMF found 6 fighting holes, 2 bunkers,<br>1 buried body, 10 years old. Neg cause of death. 2 water<br>buffaloes in underground stable. Reburied body. | FSR    |
|    |     | 114   | 161710 | Message from Rear to SM6  |        |
|    |     | 115   | 161810 | SITREP #6   | FSR    |
|    |     | 116   | 162000 | Message from Rear to SMFlame A  |        |
|    |     | 117   | 161230 | Spt Rpt. At BT 146518 SMF found 1 bunker 6x6. Contained little b<br>bottle of alcohol, 2 bags of drugs, 1 ID card. Collected<br>for evacuation.                             | FSR    |
|    |     | 118   | 162345 | SITREP #7   | FSR    |
|    |     | 119   | 170600 | SITREP #8   | FSR    |
|    |     | 120   | 170745 | Message from SM3 to PH3.  |        |
|    |     | 121   | 170845 | Message from SM to PH.  |        |
|    |     | 122   | 170845 | Spt Rpt. At BT 148517 SMH received sniper fire, SMF will<br>check area.   | FSR    |
|    |     | 123   | 171140 | Message from SM3 to PH3.  | FSR    |
|    |     | 124   | 171150 | SITREP #9   | FSR    |

DECLASSIFIED

DECLASSIFIED

CONFIDENTIAL

2d Battalion, 26th Marines

## JOURNAL

| IN | OUT | SER # | DTG    | INCIDENTS, MESSAGES & ORDERS  | ACTION |
|----|-----|-------|--------|---|--------|
|    |     | 125   | 171259 | Message from SM3R to SM3A.  |        |
|    |     | 126   | 171600 | Spt Rpt. At BT 147518 SMF found 2 old M-79 rounds. Destroyed.   | FSR    |
|    |     | 127   | 171530 | Spt Rpt. At BT 141518 SMF spotted 1 VC suspect running along tree line, opposite side of blue. Suspect ran into hootch, SMF fired LAW, now under observation. | FSR    |
|    |     | 128   | 171715 | Night Acts.   | FSR    |
|    |     | 129   | 171820 | SITREP #10  | FSR    |
|    |     | 130   | 171830 | Spt Rpt. At BT 137508 SMH received 1 sniper round. Attempting Whiskey clearance.  | FSR    |
|    |     | 131   | 171825 | Message from SM3 to PH3.  |        |
|    |     | 132   | 172400 | SITREP # 11   | FSR    |
|    |     | 133   | 180600 | SITREP # 12   | FSR    |
|    |     | 134   | 172345 | Spt Rpt. At BT 137507 SMH received fire from AK-47 and light machine-gun fire. Called in W Mission.   | FSR    |
|    |     | 135   | 172145 | Spt Rpt. At BT 146514 SMH had 1 USMC slip and fall while throwing M26. Man was medevaced.   | FSR    |
|    |     | 136   | 180900 | Message from SM3 to PH3   |        |

DECLASSIFIED

DECLASSIFIED

CONFIDENTIAL

## 2d Battalion, 26th Marines

## JOURNAL

| IN | OUT | SER # | DTG    | INCIDENTS, MESSAGES & ORDERS  | ACTION |
|----|-----|-------|--------|---|--------|
|    |     | 137   | 180915 | Message from SM3 to PH3   |        |
|    |     | 138   | 180930 | Spt Rpt. At BT 143517 SMF recovered 1 VN male body. Died from shrapnel wounds. Believed to be man seen crossing river night of the 15th. Searched neg. results. | FSR    |
|    |     | 139   | 181515 | Message from SM3 to PH3.  |        |
|    |     | 140   | 181410 | Spt Rpt. At BT 141516 SMH found documents in a bunker. Documents evacuated to PH2.  | FSR    |
|    |     | 141   | 181355 | Spt Rpt. At BT 181355 SMH found 10 .50 cal casings in a hootch. Blew hootch, continued patrol.  | FSR    |
|    |     | 142   | 181200 | SITREP #13  | FSR    |
|    |     | 143   | 181800 | SITREP #14  | FSR    |
|    |     | 144   | 181800 | Night Acts for 18Dec68  |        |
|    |     | 145   | 182045 | Message from PH to SM.  |        |
|    |     | 146   | 190630 | SITREP #16  | FSR    |
|    |     | 147   | 190715 | Spt Rpt. At BT 146520 SMF spotted 1 VC suspect who ran in a bunker. Fired tango round. Under observation.   | FSR    |
|    |     | 148   | 190845 | Message from SM3 to PH3.  |        |

DECLASSIFIED

DECLASSIFIED

CONFIDENTIAL

## 2d Battalion, 26th Marines

## JOURNAL

| IN | OUT | SER # | DTG    | INCIDENTS, MESSAGES & ORDERS  | ACTION |
|----|-----|-------|--------|---|--------|
|    |     | 149   | 190920 | Message from SM3 to PH3.  |        |
|    |     | 150   | 191010 | Message from SM to PH.  |        |
|    |     | 151   | 190730 | Spt Rpt. At BT 152521 SMG found 1 butterfly bomb armed with<br>Anti-Disturbance device. Was not tampered with. Destroyed.                                     | FSR    |
|    |     | 152   | 191145 | Spt Rpt. At BT 131505 SMH while sweeping East drove 7 VC across<br>blue. Taken under fire, results 1 VC KIA (c) BNR. Others ran<br>West. Continue to observe. | FSR    |
|    |     | 153   | 191200 | SITREP #17  | FSR    |
|    |     | 154   | 191400 | Spt Rpt. At BT 132505 SMH while sweeping East drove 1 VC to<br>river bank, taken under fire results 1 VC KIA (c) BNR. Araz<br>under observation.              | FSR    |
|    |     | 155   | 191440 | Message from SM3 to Pal Joey B-6/   |        |
|    |     | 156   | 191510 | Message from SM to PH.  |        |
|    |     | 157   | 191630 | Message from PH to SM.  |        |
|    |     | 158   | 191635 | Message from SM to PH Bailey.   |        |
|    |     | 159   | 191605 | Message from PH2 to SM.   |        |
|    |     | 160   | 191700 | Message from SM3 to Pal Joey Bravo 6.   |        |

DECLASSIFIED

DECLASSIFIED

CONFIDENTIAL

## 2d Battalion, 26th Marines

## JOURNAL

| IN | OUT | SER # | DIG    | INCIDENTS, MESSAGES & ORDERS  | ACTION |
|----|-----|-------|--------|---|--------|
|    |     | 161   | 191620 | Spt Rpt. At BT 166516 SME spotted VC suspect running at edge of blue.   | FSR    |
|    |     |       |        | Fired Machine-Gun results 1 VC KIA (c) BNR.   |        |
|    |     | 162   | 191145 | Spt Rpt. At BT 131505 SMH recovered 1 body. Found blood and drag marks.   | FSR    |
|    |     | 163   | 191725 | Message from PH to SM.  |        |
|    |     | 164   | 191700 | Spt Rpt. At BT 135506 SMH spotted VC running away. VC was shot in foot by SMH. Evacuated to SM.   | FSR    |
|    |     | 165   | 191825 | Night Acts 19Dec68  |        |
|    |     | 166   | 191850 | Night Acts from SM3 to PH3.   |        |
|    |     | 167   | 191915 | Spt Rpt. At BT 171511 SMG spotted 2 VC in water. Took under fire resulting in 1 VC KIA (c) BNR. Other crawled away on opposite shore. Area under observation. | FSR    |
|    |     | 168   | 191915 | Spt Rpt. At BT 169520 SMG spotted 1 VC in a boat. Took under fire, boat was sunk, Results 1 VC KIA (c) BNR.   | FSR    |
|    |     | 169   | 191150 | SITREP #18  | FSR    |
|    |     | 170   | 191800 | SITREP #19=   | FSR    |
|    |     | 171   | 200600 | SITREP #20  | FSR    |

DECLASSIFIED

DECLASSIFIED

CONFIDENTIAL

## 2d Battalion, 26th Marines

## JOURNAL

| IN | OUT | SER # | DTG    | INCIDENTS, MESSAGES & ORDERS                                  | ACTION |
|----|-----|-------|--------|---|--------|
|    |     | 172   | 192330 | Spt Rpt. At BT 168518 SME spotted 1 VC in river, fired M*79's |        |
|    |     |       |        | VC disappeared from view. Results 1 VC KIA (c) BNR.           | FSR    |
|    |     | 173   | 191800 | Spt Rpt. At BT 168523 SME found 1 VC alone in ville. Taken    |        |
|    |     |       |        | to SM.  | FSR    |
|    |     | 174   | 201130 | Message from SM3 to PH.                                       |        |
|    |     | 175   | 201240 | Spt Rpt. At BT 164513 SME observed secondary explosions as    |        |
|    |     |       |        | a result of Artillery mission.                                | FSR    |
|    |     | 176   | 192000 | Spt Rpt. At BT 135504 SMH A-2 received incoming M26's while   |        |
|    |     |       |        | enroute to A site. Estimated 10 VC in contact. Returned fire  |        |
|    |     |       |        | VC fled.  | FSR    |
|    |     | 177   | 192130 | Spt Rpt. At BT 144520 SMF spotted 2 boats which appeared to   |        |
|    |     |       |        | be empty, moving down blue. Destroyed with M-79's.            | FSR    |
|    |     | 178   | 192030 | Spt Rpt. At BT 169522 SME sprung ambush on 5 VC. Returned     |        |
|    |     |       |        | fire with LAW, M-79, M-60, s/a. Searched in AM, neg results.  | FSR    |
|    |     | 179   | 201200 | SITREP #21  | FSR    |
|    |     | 180   | 201320 | Day Acts SMH for 20Dec68.                                     |        |
|    |     | 181   | 201315 | Spt Rpt. At BT 177509 SMF took s/a fire. Returned w/Tangos    |        |

DECLASSIFIED

DECLASSIFIED

CONFIDENTIAL

## 2d Battalion, 26th Marines

## JOURNAL

| IN | OUT | SER # | DIG    | INCIDENTS, MESSAGES & ORDERS   | ACTION |
|----|-----|-------|--------|--|--------|
|    |     |       |        | Echo to search area.   | FSR    |
|    |     | 182   | 201300 | Spt Rpt. At BT 173508 SMF took small arms fire from clump of trees. Returned with Tangos and M-60's. SME to search area. | FSR    |
|    |     | 183   | 201330 | Spt Rpt. At BT 176509 SME received small arms fire. SMF returning fire with Tangos and M-60's.                           | FSR    |
|    |     | 184   | 201330 | Spt Rpt. At BT 179508 SMF received small arms fire. Returned with Tangos and M-60's.                                     | FSR    |
|    |     | 185   | 192030 | Spt Rpt. At BT 137504 SMH taken under fire by light machine-gun M26's. Called Spooky. Contact broken, neg results.       | FSR    |
|    |     | 186   | 201230 | Message from PH to Rural Tracker 3700.   |        |
|    |     | 187   | 201645 | SPECIAL SITREP   | FSR    |
|    |     | 188   | 201410 | Night Acts 20Dec68   |        |
|    |     | 189   | 201910 | Message from PH3 to SM3  |        |
|    |     | 190   | 201600 | Message from PH3 to SM3  |        |
|    |     | 191   | 201456 | Spt. Rpt. At BT 167514 SMG found 1 VN male in hootch w/leg. wound from Tangos. Turned over to ITT.                       | FSR    |
|    |     | 192   | 201830 | Spt Rpt. At BT 171518 SMF spotted 3 NVA <del>had</del> weapons and   |        |

DECLASSIFIED

DECLASSIFIED

CONFIDENTIAL

## 2d Battalion, 26th Marines

## JOURNAL

| IN | OUT | SER # | DTG    | INCIDENTS, MESSAGES & ORDERS                                    | ACTION |
|----|-----|-------|--------|---|--------|
|    |     |       |        | wearing black clothing. SMG sent 2 squads toward ville using    |        |
|    |     |       |        | M-79, 3.5, and small amrs. Results 1 VC KIA (c), 1 M1 cartridge |        |
|    |     |       |        | belt, 1 ChiCom. Body buried.                                    | FSR    |
|    |     | 193   | 201830 | Spt Rpt. At BT 171518 SMF spotted 3 armed men w/black clothing. |        |
|    |     |       |        | SMF sent 2 squads took NVA under fire, results 1 NVA KIA (c)    |        |
|    |     |       |        | SME supported SMF by fire with M60, M79, SMW, SMFW & Spooky.    |        |
|    |     |       |        | Flares showed 3 NVA KIA (c) BNR. 1 NVA buried, 1 ChiCom         |        |
|    |     |       |        | destroyed. All clothing, arms, and equip held at SMFCP.         | FSR    |
|    |     | 194   | 201400 | Spt Rpt. At BT 1657 SMG found 36 bunkers, 4 spider holes.       |        |
|    |     |       |        | Bunkers were family type. 12' tunnels in L shape w/2 ents.      |        |
|    |     |       |        | Destroyed with Demo.  | FSR    |
|    |     | 195   | 201900 | SITREP #22  | FSR    |
|    |     | 196   | 201900 | Spt Rpt. At BT 169524 Spooky Flares show 3 NVA KIA BNR          |        |
|    |     |       |        | still in place. SME in place to prevent recovery of 3 bodies.   |        |
|    |     |       |        | Spooky reports 3 additional bodies. Total 6 NVA KIA (c) BNR     |        |
|    |     |       |        | 1 NVA KIA (c)   | FSR    |
|    |     | 197   | 210700 | SITREP # 24   | FSR    |

DECLASSIFIED

DECLASSIFIED

CONFIDENTIAL

2d Battalion, 26th Marines

## JOURNAL

| IN | OUT | SER # | DTG    | INCIDENTS, MESSAGES & ORDERS  | ACTION |
|----|-----|-------|--------|---|--------|
|    |     | 198   | 210830 | Message from SM3 to SM3E8.  |        |
|    |     | 199   | 210800 | Spt Rpt. At BT 141514 SMH spotted 1 VC running W/side of river. Fired LAW saw body drop. Now searching.   | FSR    |
|    |     | 200   | 210850 | Day Acts 21D <sub>0</sub> c68   |        |
|    |     | 201   | 210800 | Spt Rpt. (Final) At BT 141514 SMH found blood trails and many foot prints. Leading West.  | FSR    |
|    |     | 202   | 210650 | Spt Rpt. At BT 154518 SMH while on A site, spotted 4 VC. Opened fire with small arms, VC ducked out of site. Found blood trails leading to ville and swamp. Neg results.  | FSR    |
|    |     | 203   | 211050 | SPECIAL SITREP  | FSR    |
|    |     | 204   | 210800 | Spt Rpt. At BT 167515 SMG sent out to check last nights movements, found tunnel 4x4x5 with 1 SKS rifle (no bolt) 4 clips ammo, 1 ChiCom, documents and dairy, small amount of medicine. Destroyed tunnel with Demo. | FSR    |
|    |     | 205   | 210830 | Spt Rpt. At BT 1651 SMG found 31 family type bunkers, made of bamboo & L shaped. Found 2 dud 105's & 1 155 dud. Destroyed with Demo.  | FSR    |

DECLASSIFIED

DECLASSIFIED

CONFIDENTIAL

2d Battalion, 26th Marines

## JOURNAL

| IN | OUT | SER # | DTG    | INCIDENTS, MESSAGES & ORDERS  | ACTION |
|----|-----|-------|--------|---|--------|
|    |     | 206   | 211030 | Day Acts SMH  |        |
|    |     | 207   | 211130 | Message from SM to PH.  |        |
|    |     | 208   | 210800 | Spt Rpt. At BT 167515 SMG sent unit out to check last nights movement.  | FSR    |
|    |     | 209   | 210630 | Spt Rpt. At BT 173516 SMF1 swept area of last nights contact with neg results.  | FSR    |
|    |     | 210   | 211040 | Spt Rpt. At BT 148516 SMH P-2 came across 6 people all males in a rice paddy, ran when told to stop resulting in shot in leg & stomach. Medevaced to NSA. | FSR    |
|    |     | 211   | 211040 | Spt Rpt (Refer 199) At BT 177535 SMH found the man, who was wearing white clothes. Approx 45 years old.   | FSR    |
|    |     | 212   | 211540 | Spt Rpt. At BT 177535 SMF took small arms fire from AK47's Fired Little W and other supporting arms.  | FSR    |
|    |     | 213   | 211250 | Spt Rpt. At BT 141523 SMH spotted approx 12 VC&NVA. Opened fire wounding 1, who they took into bunker. Arty now being called in on bunker.                | FSR    |
|    |     | 214   | 211625 | Message from SM to SM3A.  |        |

DECLASSIFIED

DECLASSIFIED

CONFIDENTIAL

## 2d Battalion, 26th Marines

## JOURNAL

| IN | OUT | SER # | DTG    | INCIDENTS, MESSAGES & ORDERS   | ACTION |
|----|-----|-------|--------|--|--------|
|    |     | 215   | 211120 | Night Acts 21Dec68.  |        |
|    |     | 216   | 211800 | Spt Rpt. SMF chased 3VC/NVA, and couldn't catch. SMG had contact with 3-4 VC/NVA at BT 174512. Enemy withdrew into tree line.                            | FSR    |
|    |     | 217   | 211745 | At BT 177509 SMG A1 while moving in position received AK47 fire from tree line. Returned fire with small arms, M79. Found AK 47 rounds, called in Big W. | FSR    |
|    |     | 218   | 211800 | SITREP #26   | FSR    |
|    |     | 219   | 211900 | Spt Rpt. At BT 1651 SMG ITT reports that 16 VC remain in ville. Checked bunkers with neg results.  | FSR    |
|    |     | 220   | 212010 | Message from SM3 to PH3.   |        |
|    |     | 221   | 211730 | Spt Rpt. At BT 166520 SME found 2 rusty 155 rounds. Destroyed  | FSR    |
|    |     | 222   | 212035 | Spt Rpt. At BT 147514 SMH A5 received 3 M979 rounds. Believed to be for pinpointing position. Neg results.   | FSR    |
|    |     | 223   | 212115 | Message from PH to SM3.  |        |
|    |     | 224   | 211530 | Spt Rpt. At BT 173534 SMF received small arms fire. Returned fire with small arms and 12 60mm. Continue moving toward enemy.                             | FSR    |

DECLASSIFIED

DECLASSIFIED

CONFIDENTIAL

21 Battalion 26th Marines

JOURNAL

| IN | OUT | SERIAL | TIME   | INCIDENTS, MESSAGES & ORDERS   | ACTION |
|----|-----|--------|--------|--|--------|
|    |     | 225700 | 211700 | Spt Rpt. At BT 177534 SMF spotted 2 VC women. VC fired<br>SMF returned fire with small arms. Results 1 VC KIA (c)<br>and 3 detainees captured. | FSR    |
|    |     | 226    | 212000 | Spt Rpt. At BT 177535 SMF received small arms fire. Returned fi<br>fire with small arms and called Arty mission.                               | FSR    |
|    |     | 227    | 212350 | SITREP #27   | FSR    |
|    |     | 228    | 220650 | SITREP #28   | FSR    |
|    |     | 229    | 220755 | Day Acys 22Dec68   |        |
|    |     | 230    | 220840 | Spt Rpt. At BT 145514 SMH spotted 2-3 at blue trying<br>to cross. SMH now moving to apprehend.   | FSR    |
|    |     | 231    | 220950 | Spt Rpt. At BT 161516 SMH found 1 155 round. Destroyed.  | FSR    |
|    |     | 232    | 221100 | Spt Rpt. At BT 175512 SMG found 1 male killed by<br>shrapnel in a fresh grave. 1 VC KIA (c).   | FSR    |

CONFIDENTIAL

DECLASSIFIED

DECLASSIFIED

CONFIDENTIAL

2d Battalion 26th Marines

## JOURNAL

| IN | OUT | SER# | DTG    | INCIDENTS, MESSAGES & ORDERS   | ACTION |
|----|-----|------|--------|--|--------|
|    |     | 233  | 221110 | Spt Rpt. At BT 138502 SMH spotted 4 VN dressed in khakis, hiding behind haystack. After being spotted they disappeared.      |        |
|    |     |      |        | Now conducting search of the area.   | FSR    |
|    |     | 234  | 221125 | Spt Rpt. At BT 147502 SMH P-2 spotted approx 6-7 VN dressed in khakis, trying to hide in ville. Arty called in on ville.     | FSR    |
|    |     | 235  | 221225 | SITREP #29   | FSR    |
|    |     | 236  | 221125 | Spt Rpt. At BT 147502 SMH checked out area of Arty mission with neg results.   | FSR    |
|    |     | 237  | 221400 | Spt Rpt. At BT 165523 SME found a fresh grave 50m from A site of 19Dec68. VC killed by Claymore. 1 VC KIA (c)                | FSR    |
|    |     | 138  | 221700 | Spt Rpt. At BT 153529 SMH while calling Arty mission observed 1 VC WIA enter water. 81s and s/a. fired. 1 VC KIA (c) BNR FSR |        |

CONFIDENTIAL

DECLASSIFIED

DECLASSIFIED

CONFIDENTIAL

2d Battalion 20th Marines

## JOURNAL

| IN | OUT | SERIAL | DTG    | INCIDENTS, MESSAGES & COMMENTS                          | ACTION |
|----|-----|--------|--------|---|--------|
|    |     | 239    | 221730 | Night Acts 22Dec68                                      |        |
|    |     | 240    | 221801 | SITREP #30  | FSR    |
|    |     | 241    | 221535 | Spt Rpt. At BT 174531 SMF received small arms fire.     |        |
|    |     |        |        | Returned fire with small arms and 60mm, Results unkown. | FSR    |
|    |     | 242    | 221300 | Spt Rpt. At BT 177553 SMF received small arms fire.     |        |
|    |     |        |        | Returned with small arms and 60mm. Results unknown      | FSR    |
|    |     | 243    | 221500 | Spt Rpt. At BT 174581 SMF received small arms fire.     |        |
|    |     |        |        | Returned with small arms and 60mm. Results unknown      | FSR    |
|    |     | 244    | 230600 | SITREP #32  | FSR    |
|    |     | 245    | 230747 | Message from SM3 to PH3 & SM5.                          |        |
|    |     | 246    | 230815 | Day Acts 23Dec68.                                       |        |
|    |     | 247    | 230800 | Message from SM3 to SM5.                                |        |
|    |     | 248    | 231130 | Spt Rpt. At BT 137504 SMH came across a bunker 4x4x8    |        |

CONFIDENTIAL

DECLASSIFIED

DECLASSIFIED

CONFIDENTIAL

2d Battalion 25th Marines

CONFIDENTIAL

| IN | OUT | REF | DTG    | INCIDENTS, MESSAGES & ORDERS                                | APPROV |
|----|-----|-----|--------|---|--------|
|    |     |     |        | also found medicine bottle wrapped in a document. Destroyed |        |
|    |     |     |        | medicine, document to SM-2.                                 | FSR    |
|    |     | 249 | 231155 | Spt Rpt. At BT 146517 SMH P-3 found 2 detainees. Taken      |        |
|    |     |     |        | to SM.  | FSR    |
|    |     | 250 | 231330 | SITREP #33  | FSR    |
|    |     | 251 | 231535 | Night Acts for 23Dec68.                                     | FSR    |
|    |     | 252 | 232025 | Spt Rpt. At BT 145516 SMH A spotted 8-10 VN. Taken under    |        |
|    |     |     |        | fire with small arms & claymore. VC returned fire with      |        |
|    |     |     |        | AK-47. Relocated A, results unknown.                        | FSR    |
|    |     | 253 | 232135 | Spt Rpt. At BT 166524 SME received ordnance of an           |        |
|    |     |     |        | undetermined cal at rear of A site. Shrapnel hit 1          |        |
|    |     |     |        | USMC, who was treated by Corpsman.                          | FSR    |
|    |     | 254 | 232355 | SITREP # 34   | FSR    |

CONFIDENTIAL

DECLASSIFIED

DECLASSIFIED

CONFIDENTIAL

2d Battalion 26th Marines

JOURNAL

| IN | OUT | SEQ | TIME   | INCIDENTS, MESSAGES & ORDERS                               | LOCATION |
|----|-----|-----|--------|--|----------|
|    |     | 255 | 240600 | SITREP #35   | FSR      |
|    |     | 256 | 271050 | SITREP #36   | FSR      |
|    |     | 257 | 271215 | PosRpt.  |          |
|    |     | 258 | 271030 | Spt Rpt. At 271030H lift off of little people initiated.   | FSR      |
|    |     | 259 | 271215 | Spt Rpt. SMH at 271205H moved to P.L APPLE.                | FSR      |
|    |     | 260 | 271415 | Spt Rpt. Fairlane Whiskey in position to fire.             | FSR      |
|    |     | 261 | 271505 | Change in Pos Rpt.   |          |
|    |     | 262 | 271645 | At BT 174488 SMF received 1 round of sniper fire. Returned |          |
|    |     |     |        | with small arms, now checking area.                        | FSR      |
|    |     | 263 | 271720 | SITREP #37   | FSR      |
|    |     | 264 | 271815 | Message from SM to SMR.                                    |          |
|    |     | 265 | 271430 | Spt Rpt. At BT 170488 SMF found 1 ChiCom wrapped in cloth. |          |
|    |     |     |        | Turned over to SM-2.                                       | FSR      |

CONFIDENTIAL

DECLASSIFIED

DECLASSIFIED

CONFIDENTIAL

## 2d Battalion, 26th Marines

## JOURNAL

| IN | OUT | SER # | DTG    | INCIDENTS, MESSAGES & ORDERS   | ACTION |
|----|-----|-------|--------|--|--------|
|    |     | 266   | 272110 | Message from SM3B to SM.   |        |
|    |     | 267   | 271800 | Night Acts 27Dec68.  |        |
|    |     | 268   | 272115 | Message from PH3 to SM3B.  |        |
|    |     | 269   | 272020 | Spt Rpt. At BT 165482 SMG heard a bell ringing. May have been<br>a warning system. Alerted troops in area.                       | FSR    |
|    |     | 270   | 272245 | SITREP #38   | FSR    |
|    |     | 271   | 280500 | SITREP #39   | FSR    |
|    |     | 272   | 280600 | Spt Rpt. At BT 168496 SME heard rushing sound in brush which<br>came within 25 meters. Opened fire resulting in 1 1201b pig KIA. | FSR    |
|    |     | 273   | 280840 | Day Acts SMG 28Dec68.  |        |
|    |     | 274   | 280940 | Spt Rpt. At BT 168484 SMF heard sniper fire shooting at<br>fixed wing. Arty mission now being called.                            | FSR    |
|    |     | 275   | 281005 | Message from SM3 to PH3.   |        |
|    |     | 276   | 280900 | Spt Rpt. At BT 164483 SMG heard sniper fire, called W mission<br>with unknown results.   | FSR    |
|    |     | 277   | 280420 | Spt Rpt. At BT 169492 SME heard and saw movement. Fired<br>M-46s and m-79 with neg results.                                      | FSR    |

DECLASSIFIED

DECLASSIFIED

CONFIDENTIAL

## 2d Battalion, 26th Marines

## JOURNAL

| IN | OUT | SER # | DTG    | INCIDENTS, MESSAGES & ORDERS   | ACTION |
|----|-----|-------|--------|--|--------|
|    |     | 278   | 281030 | Spt Rpt. At BT 145479 SMH took sniper fire 5-7 rounds, called W Mission with unknown results.  | FSR    |
|    |     | 279   | 281045 | SITREP #40   | FSR    |
|    |     | 280   | 281210 | Spt Rpt. At BT 159482 SMH received sniper fire. Returned with small arms, called 8ls and 79 support, resulting in 2 female WIA. Medevaced. | FSR    |
|    |     | 281   | 281345 | Spt Rpt. At BT 158492 SME found 1 bunker 8x3x4 made of bamboo. A tunnel ran 9' from bunker, found 1 Civilian radio, 1 M-26. Bunker blown.  | FSR    |
|    |     | 282   | 281210 | Spt Rpt. At BT 145486 SMH found approx 30 fresh graves. Are now excavating at random.  | FSR    |
|    |     | 283   | 281500 | Day Acts 28Dec68.  |        |
|    |     | 284   | 281500 | Night Acts 28Dec68   |        |
|    |     | 285   | 281645 | SITREP #41   | FSR    |
|    |     | 286   | 281900 | Spt Rpt. At BT 166483 SM received small arms fire. Returned fire with small arms and 79s, fire ceased.                                     | FSR    |
|    |     | 287   | 282200 | Spt Rpt. At BT 168494 SMF heard movement in ville. Opened  |        |

DECLASSIFIED

DECLASSIFIED

CONFIDENTIAL

## 2d Battalion, 26th Marines

## JOURNAL

| IN | OUT | SER # | DTG    | INCIDENTS, MESSAGES & ORDERS  | ACTION |
|----|-----|-------|--------|---|--------|
|    |     |       |        | fire with M16s and M26 results 1 VC KIA (c) had 1 ChiCom.   | FSR    |
|    |     | 288   | 282015 | Message from SM3 to PH3.  |        |
|    |     | 289   | 281945 | Spt Rpt. At BT 168494 SMF2 saw movement. Threw 1 M26 with<br>neg results.   | FSR    |
|    |     | 290   | 282050 | Spt Rpt. At BT 163501 SME spotted individual moving W-E<br>toward SME A1 position. Employed M26s and captured 1 VC suspect<br>Transported suspect to CIT/INT. | FSR    |
|    |     | 291   | 282400 | SITREP #42  | FSR    |
|    |     | 292   | 290500 | SITREP #43  | FSR    |
|    |     | 293   | 282010 | Spt Rpt. At BT 168495 SMF3 heard movement inside ville.<br>Threw M26 with neg results.  | FSR    |
|    |     | 294   | 282035 | Spt Rpt. At BT 168494 SMF saw 1 person moving along w/cows.<br>Sent 2 USMC to check, found 15 people in hootch. People heli-<br>lifted to CIT position.       | FSR    |
|    |     | 295   | 290645 | Spt Rpt. At BT 180484 SMF had 1 VC walk into their lines.-<br>When told to halt started running. SMF opened fire, results<br>1 VC KIA (c).                    | FSR    |

DECLASSIFIED

DECLASSIFIED

DECLASSIFIED

DECLASSIFIED

| IN | OUT | SER # | DTG    | INCIDENTS, MESSAGES & ORDERS   | ACTION |
|----|-----|-------|--------|--|--------|
|    |     | 296   | 290310 | Spt Rpt. At BT 168494 SMF spotted 1 figure. Opened fire with M-79s, figure ran out of range.   | FSR    |
|    |     | 297   | 291042 | SITREP # 44  | FSR    |
|    |     | 298   | 291130 | Message from SM3 to PH3.   |        |
|    |     | 299   | 291130 | Spt Rpt. At BT 162495 VC suspect captured last night lead SME3 to 3 vats 25lbs of rice. CIT recommendation to leave and pick up later. | FSR    |
|    |     | 300   | 291120 | Spt Rpt. At BT 165464 SMG found 1 ChiCom, 1 Spider hole with small tunnel. Blown in place.   | FSR    |
|    |     | 301   | 291100 | Spt Rpt. At BT 157498 SME found clothes under bursh. Taken to CIT.   | FSR    |

CONFIDENTIAL

2d Battalion, 26th Marines

## JOURNAL

| IN   | OUT | SER # | DTG     | INCIDENTS, MESSAGES & ORDERS   | ACTION |
|------|-----|-------|---------|--|--------|
| 1240 |     | 301   | 291130H | Spt Rpt. At BT 162495 SMF lead by a captured VCS to 3 vats of rice 750 lbs. Sent to C.I.T.   | FSR    |
| 1300 |     | 302   | 290930  | Spt Rpt. At BT 156486 SMG found a spider trap with a tunnel. Spider trap was 2' by 3'. The tunnel was 2' by 3' By 4'. At Bt 166453 a Chi Com grenade (not SFD) was found in brush. Destroyed Chi Com.  | FSR    |
| 1315 |     | 303   | 290640  | Spt Rpt. At BT 178485 SMF while on the move through the ville, spotted 50 yr old man moving into the ville. Five minutes later SMF spotted 15 yr old boy trying to evade the patrol. At BT 174485 SMF found 16 yr old girl with a small child, in a hooch. The old man wore grey shirt and black shorts. The boy wore stripped white shirt and tan shorts. The girl wore white top and black pants. All three sent to C.I.T. | FSR    |
| 1345 |     | 304   | 291235H | Day Acts for 29 December   | FSR    |
| 1410 |     | 305   | 291200H | Spt Rpt. At BT 165494 SMF found a camouflaged L shaped tunnel 18" to 20" high. 1 meter wide-3meters long, 3 meters deep. It was made of bamboo and dirt. In side were 4 VCS ages 20 to   |        |

DECLASSIFIED

DECLASSIFIED

CONFIDENTIAL

## 2d Battalion, 26th Marines

## JOURNAL

| IN   | OUT | SER # | DTG     | INCIDENTS, MESSAGES & ORDERS  | ACTION |
|------|-----|-------|---------|---|--------|
|      |     |       |         | 30 years old. They wore blue shirts, dark shorts and had no weapons. Blew bunker and sent VCS's to C.I.T.   | FSR    |
| 1425 |     | 306   | 291230H | Spt Rpt. At 166493 SME found 1 L shaped tunnel 5' by 3' by 30" high. It lead to an oval bunker of bamboo and dirt. Inside were 3 VCS. They wore blue shirts, dark shorts. Took VCS to C.I.T. and blew bunker. | FSR    |
| 1515 |     | 307   | 291400H | Spt Rpt. At BT 163495 SME found 1 VCS in L shaped tunnel. He wore green shorts and white shirt. Had no weapon. Blew tunnel and took VCS to C.I.T.   | FSR    |
| 1520 |     | 308   | 291345H | Spt Rpt. At BT 161497 SME found 1 L shaped tunnel entrance under cement grave stone hidden in brush. It was 18" by 30" and bunker was 3 meters by 4 meters. Reinforced with bamboo and dirt. Blew complex.    |        |
| 1525 |     | 309   | 291330H | Spt Rpt. At BT 167492 SME found L shaped tunnel 1 meter by 3 feet by 3 feet. Under a tree. Made with bamboo and dirt.   | FSR    |
| 1605 |     | 309   | 291450H | Spt Rpt. At BT 143508 SMH while searching a hooch found a false bottom floor in it. In it was 800 lbs of grain. Hooch   |        |

DECLASSIFIED

DECLASSIFIED

CONFIDENTIAL

## 2d Battalion, 26th Marines

## JOURNAL

| IN.  | OUT. | SER #. | MTG     | INCIDENTS, MESSAGES & ORDERS  | ACTION |
|------|------|--------|---------|---|--------|
|      |      |        |         | was constructed of straw and bamboo. Arrangements were made to take grain to the Detainees point.   | FSR    |
| 1635 |      | 310    | 291625H | Ref Msg # 291450H. The 800lbs of grain was destroyed by the PRU's.  | FSR    |
| 1706 |      | 311    | 291650H | Sit Rep # 10 From 291100H to 291700H.   | FSR    |
|      | 1720 | 312    | 291715H | Msg from SM-5B to SM-3.   | FSR    |
| 1804 |      | 313    | 291805H | Msg from SM-3 to SM-5.  | FSR    |
| 1910 |      | 314    | 291500H | Night Acts for 29 December.   | FSR    |
| 1945 |      | 315    | 291630H | Spt Rpt. At BT 156497 SME spotted 8 to 9 VC at BT 166513. They wore, 1 green uniform and the rest were blue. Called artillery on them. Unknown results.   |        |
| 2005 |      | 316    | 291950H | Spt Rpt. At BT 156497 SME spotted 1 VCS moving east to west. Was commanded to halt but did not. VCS was captured. Had no weapon. 820 piastres found on him, in a certificate from the Central Bank of China. Wore blue shirt dark shorts. Was taken to C.I.T. |        |
| 2040 |      | 317    | 292000H | Spt Rpt. At BT 155525 SMH heard movement on a trail. Took under fire and received small arms fire in return. Checked fire and recovered 1 male VC. Est 40 years old. Found clothing and black pills, on him.  |        |

DECLASSIFIED

DECLASSIFIED

CONFIDENTIAL

## 2d Battalion, 26th Marines

## JOURNAL

| IN.  | OUT  | SER #. | DTG      | INCIDENTS, MESSAGES & ORDERS   | ACTION |
|------|------|--------|----------|--|--------|
| 2305 |      | 318    | 292300H  | Sit Rep. # 11 From 291700H to 292300H.                                   | FSR    |
| 2308 |      | 319    | 2922025H | Spt Rpt. At BT 169491 SMF recieved one 105 round. Checked Pal Joey,      |        |
|      |      |        |          | found gunners error. Checked sheath and continued night actions.         | FSR    |
|      | 2310 | 320    | 292100H  | Msg. from SM-5 to SM-3.  | FSR    |
| 0015 |      | 321    | 300015H  | Spt Rpt. At BT 190480 SMG heard 1 round ricochay and land at BT 161488.  |        |
|      |      |        |          | Notified ship to change positions.                                       | FSR    |
| 0655 |      | 322    | 300545H  | Sit Rep. # 12 from 292300H to 300500H.                                   | FSR    |
| 0915 |      | 323    | 301420H  | Spt Rpt. At BT 160496 SME-3 found 1 tunnel with 18" to 20' entrance.     |        |
|      |      |        |          | 5' wide 5' long 5' deep. It had no exit. The entrance was concrete.      |        |
|      |      |        |          | Blew tunnel and observed a secondary explosion.                          | FSR    |
| 0945 |      | 324    | 292215H  | Spt Rpt. At BT 168495 SMF heard movement. They fired 2 rounds M-16.      |        |
|      |      |        |          | Searched area-negative results.  | FSR    |
| 0945 |      | 325    | 292240H  | Spt Rpt. At Bt 168494 SMF had a trip flare go off by movement. Fired 1   |        |
|      |      |        |          | claymore and 1 M-26. Searched area with negative results.                | FSR    |
| 0953 |      | 326    | 292215H  | Spt Rept. At BT 165495 SMF received 5 rounds sniper fire. Returned fire. |        |
|      |      |        |          | Checked area with negative results.                                      | FSR    |
| 1000 |      | 327    | 300655H  | Spt Rpt. I&F At BT 154519 SMH at ambush site spotted a man pop up 25     |        |

DECLASSIFIED

DECLASSIFIED

CONFIDENTIAL

2d Battalion, 26th Marines

## JOURNAL

| IN.  | OUT | SER #. | DTG     | INCIDENTS, MESSAGES & ORDERS   | ACTION |
|------|-----|--------|---------|--|--------|
|      |     |        |         | meter away. He started to run. SMH called Halt with negative results.        |        |
|      |     |        |         | Opened fire with small arms. Results, 1 VC KIA(c). VC was around 45 years    |        |
|      |     |        |         | old. He had no I.D., documents or weapon. Found a lighter with 504 insignia  |        |
|      |     |        |         | on it. Personal effects turned over to CP S-2.                               | FSR    |
| 1145 |     | 328    | 300900H | Spt Rpt. At BT 164496 SMF-3 found 1 picture inside empty rice crock.         |        |
|      |     |        |         | Is 8" by 10" and believed to be Ho Chi Mien. Also found documents in a       |        |
|      |     |        |         | bunker at the same grid. Forwarded to SMCP S-2.                              | FSR    |
| 1150 |     | 329    | 301050H | Sit Rep # 13 from 300500H to 301100H.  | FSR    |
| 1235 |     | 330    | 301010H | Spt Rpt. At BT 164497 National Police found 1 AK-47 with 3 rounds hidden     |        |
|      |     |        |         | in a bunch of bamboo. National Police kept weapon.                           | FSR    |
| 1300 |     | 331    | 301100H | Spt Rpt. At BT 168493 SMF found 10 gallons of oil buried under floor of      |        |
|      |     |        |         | a hooch. Also found a secret compartment 3' by 6' with cloths and documents. |        |
|      |     |        |         | 1 NVA cartridge belt, 1 bottle of penicillin, 1 lighter with 504 insignia.   |        |
|      |     |        |         | Oil destroyed and findings forwarded to C.I.T.                               | FSR    |
| 1304 |     | 332    | 301150H | Spt Rpt. AT BT 174485 SMF patrol 1 spotted 3 males Viet Nameese. All         |        |
|      |     |        |         | thought to be under 25 years old. Took under fire with small arms with       |        |
|      |     |        |         | negative results.  | FSR    |

DECLASSIFIED

DECLASSIFIED

CONFIDENTIAL

2d Battalion 26th Marines

## JOURNAL

| IN   | OUT | SEP# | DTG     | INCIDENTS, MESSAGES & ORDERS  | ACTION |
|------|-----|------|---------|---|--------|
| 1305 |     | 333  | 301245H | Day Acts. For 30 December.  | FSR    |
| 1310 |     | 334  | 301230H | Spt Rpt. At BT 158495 SME found 1 tunnel 18" to 20", 5' by 5'. Inside was found a box of medical supplies, 1 cartridge belt, 1 canteen and parts of a gas mask. Taken to SMCP S-2.                              | FSR    |
| 1355 |     | 335  | 301230H | Spt Rpt. At BT 167496 SMCP found two 250lb caches of rice. At BT 167495 they found two 100lb bags of rice. At BT 167494 they found 1 five gallon can of gasoline. Gas was destroyed. R. Rice sent to the C.I.T. | FSR    |
|      |     |      |         |   |        |
|      |     |      |         |   |        |
|      |     |      |         |   |        |
|      |     |      |         |   |        |
|      |     |      |         |   |        |

CONFIDENTIAL

DECLASSIFIED

DECLASSIFIED

CONFIDENTIAL

2d Battalion 26th Marines

## JOURNAL

| IN   | OUT | SER# | DTG     | INCIDENTS, MESSAGES & ORDERS  | ACTION |
|------|-----|------|---------|---|--------|
| 1330 |     | 336  | 301200H | Spt Rpt. At BT 7167494 SMCP found 3 tubes of glucose, 3 bottles of penicillin. All were hidden in the brush.  |        |
|      |     |      |         | Also hidden in the brush near the same area were found 3 BA-30's. All findings forwarded to C.I.T.  | FSR    |
| 1425 |     | 337  | 300900H | Spt Rpt. At BT 158494 SME tripped Chi Com while investigating noise in a bunker. Threw 1 M-26 in bunker resulting in 2 VC POW's not injured. Found 2 Chi Com grenades and 1 106 round. Sent VC's and all findings to C.I.T. |        |
|      |     |      |         | Medivaced 1 USMC injured from SFD.  | FSR    |
| 1435 |     | 338  | 301300H | Spt Rpt. At BT 168495 SMCP found 1 50lbs bag of rice, which was buried under some bricks. At BT 167496 SMCP found 1 60lb and 1 110lb bags of rice in a bunker 2 1/2' by 4' by 8'. Forwarded to C.I.T.                       | FSR    |

CONFIDENTIAL

DECLASSIFIED

DECLASSIFIED

CONFIDENTIAL

2d Battalion 25th Marines

## JOURNAL

| IN   | OUT | SERIAL | TIME    | INCIDENTS, MESSAGES & ORDERS   | REMARKS |
|------|-----|--------|---------|--|---------|
| 1640 |     | 339    | 301530H | Spt Rpt. At BT 156497 SME found 3 VCS while searching a tunnel 18" by 20" entrance, 3' by 3' by 4'. VCS were turned over to C.I.T.   | FSR     |
| 1800 |     | 340    | 301655H | Sit Rep # 14 from 301100H to 301700H   | FSR     |
| 1805 |     | 341    | 301530H | Night Acts for 30 December   | FSR     |
| 1850 |     | 342    | 300950H | Spt Rpt. At BT 151516 SMH came across 1 male body, estimate 40 to 45 years old. Was dressed in black cloths. Found no I.D. or any documents. Was killed by shrapnel. Buried the body.                                | FSR     |
| 1905 |     | 343    | 301300H | Spt Rpt. At BT 161496 SMG led by VCS swept the ville. VCS pointed out 1 well camouflaged tunnel. Was near a hooch. At BT 158497 and 156496, VCS pointed out 2 more in hedgerow. A PRU with a loudspeaker broadcasted |         |

CONFIDENTIAL

DECLASSIFIED

DECLASSIFIED

CONFIDENTIAL

21 Battalion 26th Marines

FOUO

| IN   | OUT  | REF | TIME    | INCIDENTS, MESSAGES & ORDERS                                | ACTION |
|------|------|-----|---------|---|--------|
|      |      |     |         | Chu Hoi to all tunnels then threw M-26 in each. Searched    |        |
|      |      |     |         | with negative results.                                      | FSR    |
| 2000 |      | 344 | 301600H | Spt Rpt. At BT 158488 SMG took sniper fire. Returned        |        |
|      |      |     |         | fire with small arms fire and M-79. Checked area with       |        |
|      |      |     |         | negative results.   | FSR    |
| 2010 |      | 345 | 301700H | Spt Rpt. At BT 157500 SME found numerous documents and      |        |
|      |      |     |         | books hidden in a haystack. Turned over to CP S-2.          | FSR    |
|      | 2205 | 345 | 302115H | Msg from SM-5 to SM-3                                       | FSR    |
| 2305 |      | 346 | 302300H | Sit Rep # 15 from 301700H to 302300H                        | FSR    |
| 2335 |      | 347 | 302145H | Spt Rpt. At BT 168497 SMF heard movement. They fired        |        |
|      |      |     |         | small arms with negative results.                           | FSR    |
| 2340 |      | 347 | 301930  | Spt Rpt. At BT 166494 SMF took sniper fire while setting    |        |
|      |      |     |         | up an ambush site. They returned fire with negative results | FSR    |

CONFIDENTIAL

DECLASSIFIED

DECLASSIFIED

CONFIDENTIAL

2d Battalion 26th Marines

## JOURNAL

| IN   | OUT  | REF | DTG     | INCIDENTS, MESSAGES & ORDERS  | ATTACH |
|------|------|-----|---------|---|--------|
| 0500 |      | 348 | 310500H | Sit Rep # 16 from 302300H to 310500H.   | FSR    |
| 0915 |      | 349 | 310800H | Day Acts for 31 December.   | FSR    |
| 0925 |      | 350 | 310730H | Spt Rpt. At BT 168496 SMF checked area of last night's action and found personal clothing which they turned over to CP S-2.   | FSR    |
| 1115 |      | 351 | 311100H | Sit Rep # 17 from 310500H to 311100H.   | FSR    |
| 1130 |      | 352 | 310825H | Spt Rpt. At BT 167493 SMF threw 1 M-26 in a 12' by 12' 4' bunker and found a hidden room which contained 1 pair of black cloths. The room was 5' by 5' by 4'. Turned cloths over to CP S-2. | FSR    |
| 1230 | 1230 | 353 | 311200H | Msg from SM to PH.  | FSR    |
| 1320 |      | 354 | 311100H | Spt Rpt. At BT 160497 SMCP found 1 female VCS hiding in a bunker. She had an I.D. and documents. VCS, I.D.  |        |

CONFIDENTIAL

DECLASSIFIED

DECLASSIFIED

CONFIDENTIAL

## 2d Battalion, 26th Marines

## JOURNAL

| IN.  | OUT. | SER #. | DTG     | INCIDENTS, MESSAGES & ORDERS   | ACTION |
|------|------|--------|---------|--|--------|
|      |      |        |         | and documents forwarded to C.I.T.  | FSR    |
| 1335 |      | 355    | 311105H | Spt Rpt. At BT 170489 SMF found 1500lbs of rice buried under the ground      |        |
|      |      |        |         | in vats. Sent rice to C.I.T.   | FSR    |
| 1340 |      | 356    | 311030H | Spt Rpt. At BT 158495 SME found 2 claymores and 2 M-79 rounds while          |        |
|      |      |        |         | searching a blown bunker. Blew findings in place.                            | FSR    |
| 1600 |      | 356    | 311030  | Spt Rpt. At BT 168495 PRU's found a tunnel complex consisting of 3 layers.   |        |
|      |      |        |         | Inside were found 2 women, 3 men, and 15 year old boy along with medical     |        |
|      |      |        |         | supplies, documents, 5 sewing machines and clothing. People and items were   |        |
|      |      |        |         | sent to C.I.T.   | FSR    |
| 1625 |      | 367    | 311610H | Spt Rpt. At BT 185479 SMF found a 15 year old girl with a high fever and     |        |
|      |      |        |         | pains, 2 women, and 3 children. Girl was medevaced and others sent to C.I.T. | FSR    |
| 1715 |      | 357    | 311200H | Sit Rep # 18 from 311100H to 311700H.  | FSR    |
| 1740 |      | 358    | 311520H | Spt Rpt. At BT 168494 SMF found assorted documents in a bunker which was     |        |
|      |      |        |         | 6' by 8' by 4'. Also found outside of the bunker 120lb bag of rice.          |        |
|      |      |        |         | Items were turned over to CP S-2.  | FSR    |
| 1805 |      | 359    | 311300H | Spt Rpt. At BT 168491 SMF found a rice cache with estimate 1700lbs of        |        |
|      |      |        |         | rice. Cache was buried. Rice sent to C.I.T.                                  | FSR    |

DECLASSIFIED

DECLASSIFIED

CONFIDENTIAL

21 Battalion 26th Marines

## JOURNAL

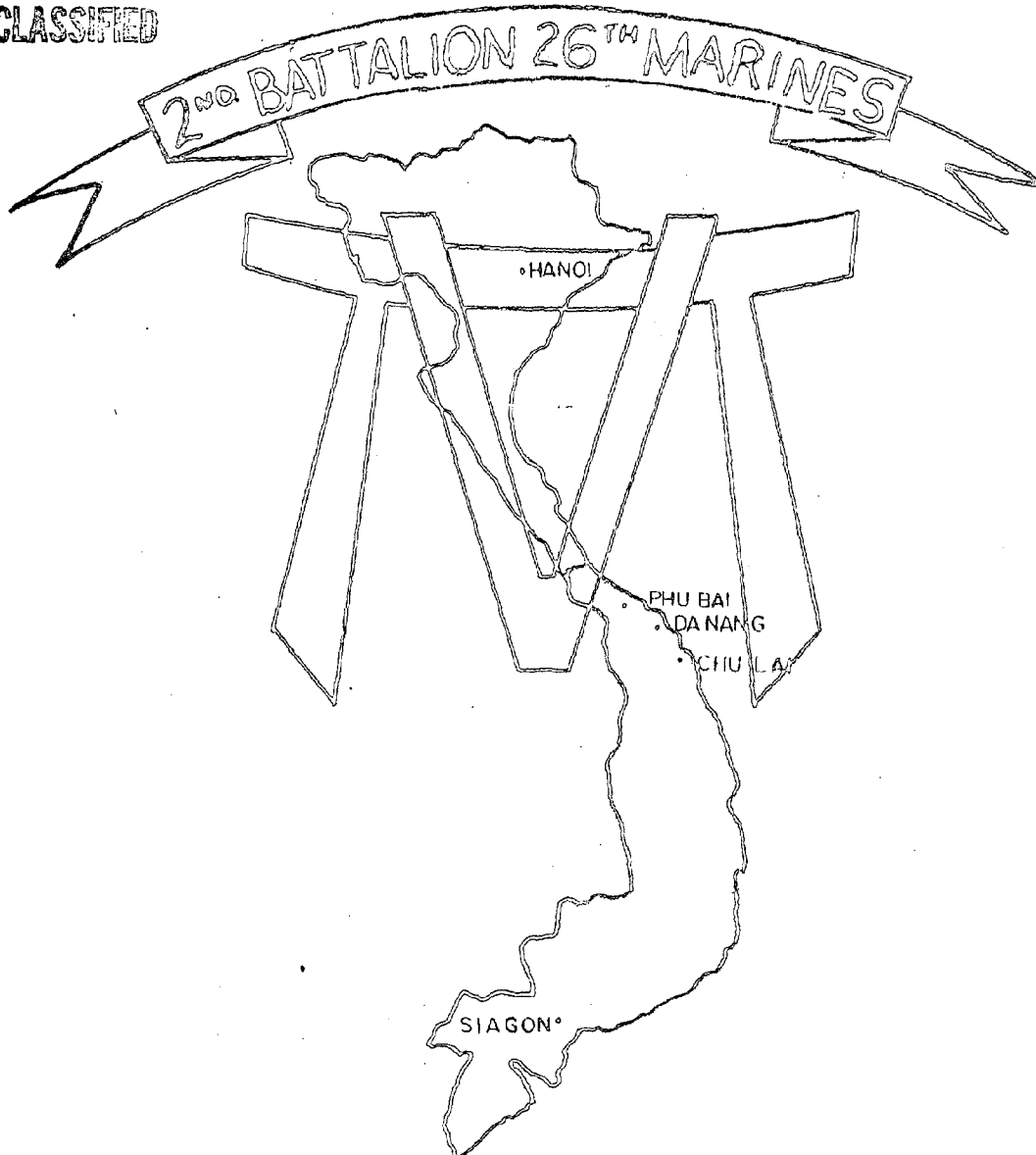
| IN   | OUT | SERIAL | TIME    | INCIDENTS, MESSAGES & ORDERS  | ACTION |
|------|-----|--------|---------|---|--------|
| 2030 |     | 360    | 311800H | Spt Rpt. At BT 161496 SMCB found 100lbs of rice while searching a tunnel complex. Rice was destroyed by PRU's. Will continue search in the morning.                                 | FSR    |
| 2135 |     | 361    | 311935H | Spt Rpt. At BT 153524 PRU's received information after interrogation on a young female, of a tunnel which contains 1 weapon and some grenades. Area will be checked in the morning. | FSR    |
| 2325 |     | 362    | 312300H | Sit Rep # 19 from 311700H to 312300H.   | FSR    |
|      |     |        |         |   |        |
|      |     |        |         |   |        |
|      |     |        |         |   |        |
|      |     |        |         |   |        |
|      |     |        |         |   |        |
|      |     |        |         |   |        |

CONFIDENTIAL

DECLASSIFIED

DECLASSIFIED

~~SECRET~~  
UNCLASSIFIED



# COMMAND CHRONOLOGY

UNCLASSIFIED

~~SECRET~~



MOVING INTO THE CORDON POSITION

*Tab F*



CONDUCTING THE SWEEP - LOOKING FOR SFD'S  
(NOTE GOOD INTERVIAL BETWEEN TROOPS)

DECLASSIFIED



PROBING VILLAGE AREA FOR HIDDEN CACHES

DECLASSIFIED



HOT CHOW IN THE FIELD



THE ALFA CMD. GROUP



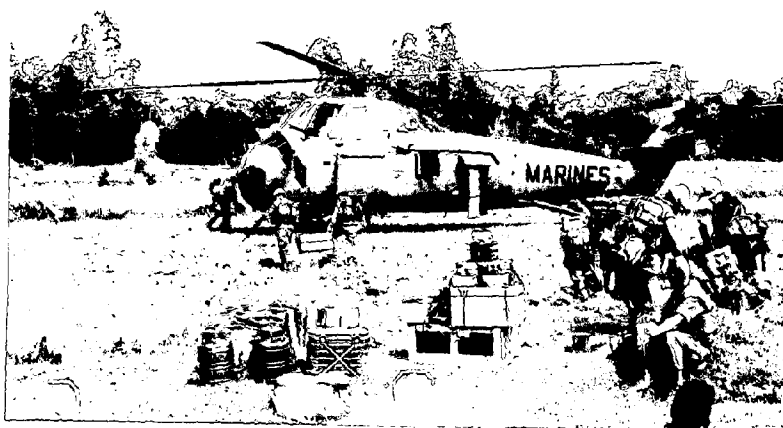
THE NEW OPS. OFFICER AND THE "OLD MAN" TALK IT OVER

JAN 1969



-- HMM-362 ON THE JOB --

JAN 69



JAN 69



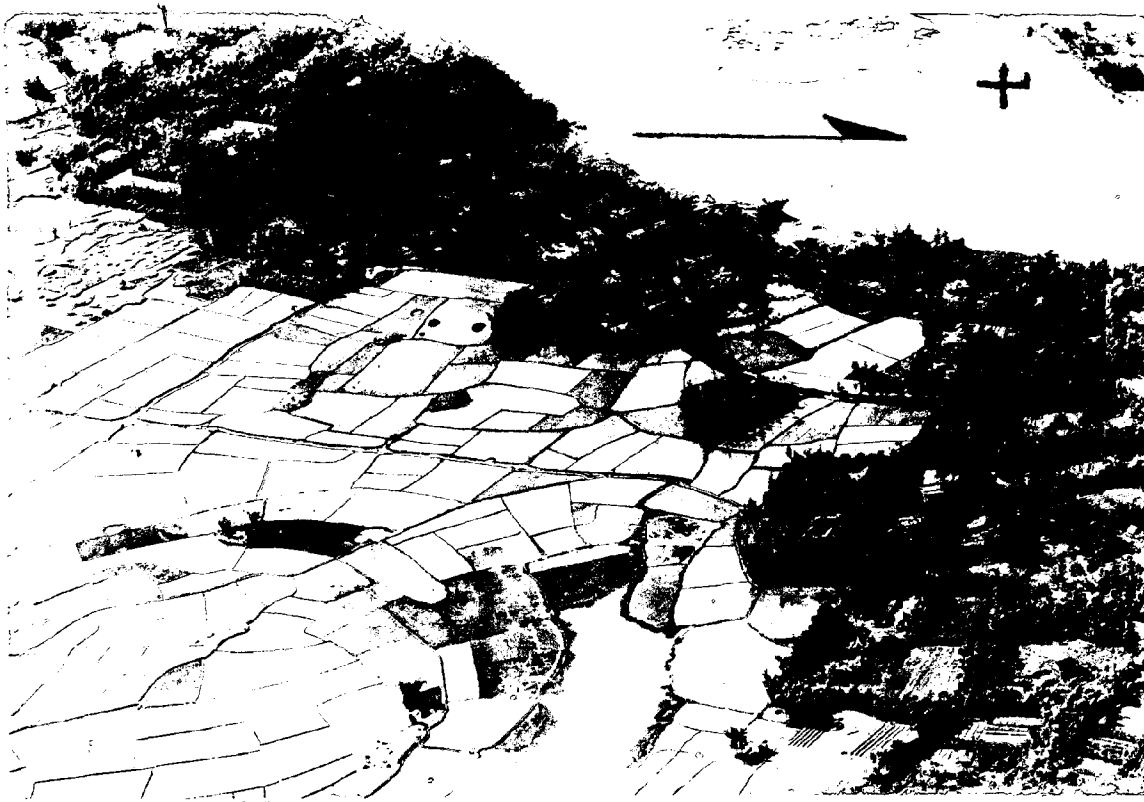
SOME LZ'S ARE OPEN -

JAN 69



AND SOME LZ'S ARE "TIGHT"

DECLASSIFIED



THE VALIANT HUNT AOA  
VICINITY BT143514

DECLASSIFIED

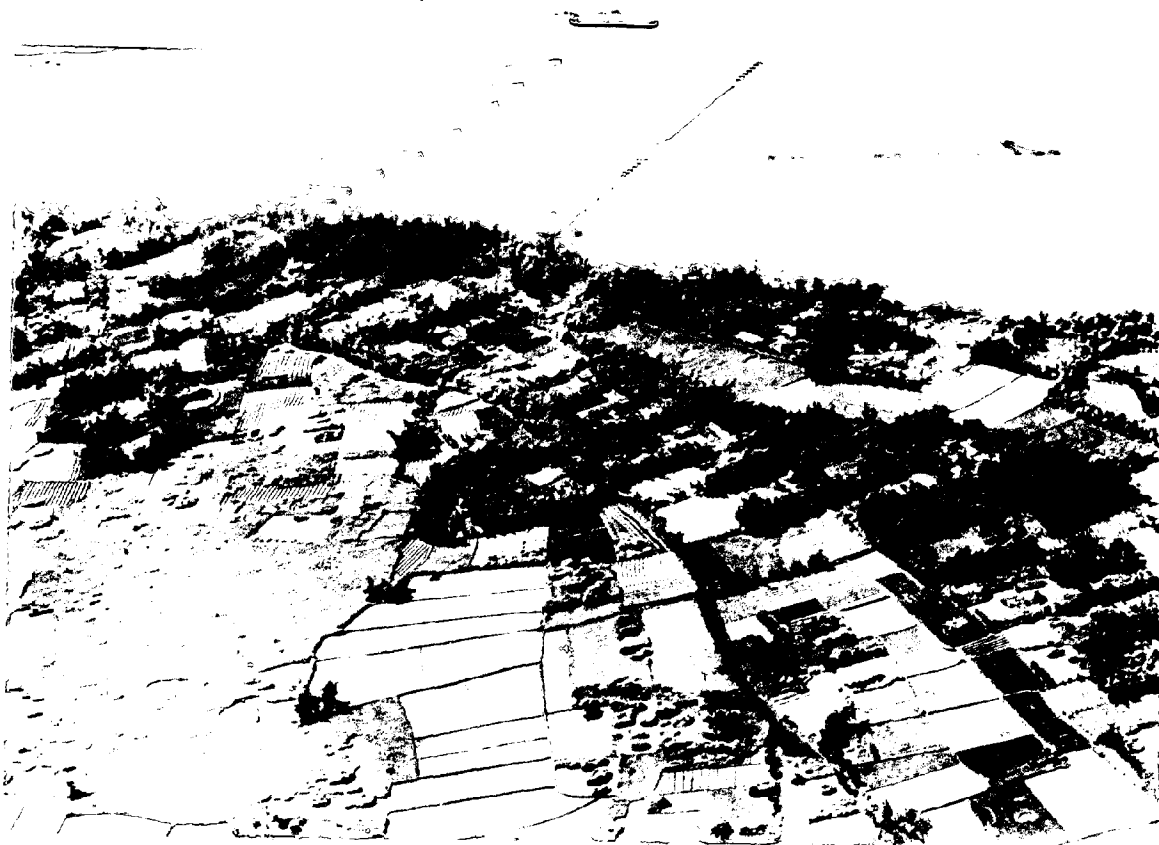
DECLASSIFIED



THE VALIANT HUNT AOA  
VICINITY BT146514

DECLASSIFIED

DECLASSIFIED



THE VALIANT HUNT AOA  
VICINITY BT145518

DECLASSIFIED



THE VALIANT HUNT AOA  
VICINITY UNK