

SECRET

INDEX TABS

- A. VIET CONG MILITARY STRUCTURE
- B. VIET CONG WEAPONS AND EQUIPMENT
- C. VIET CONG ORGANIZATION MODELS AND I CORPS ASSIGNED UNITS
- D. DISPOSITION OF VIET CONG FORCES IN SOUTH VIETNAM
- E. NORTH VIETNAMESE ARMY
- F. PAVN ORGANIZATION MODELS
- G. EQUIPMENT SUMMARIES: INFANTRY DIVISION
INFANTRY BRIGADE
ARMED REGIMENT

FORWARD

The source material utilized in the compilation of this document are: COMUSMACV's, "VIETCONG MILITARY ORDER OF BATTLE SOUTH OF THE 17TH PARALLEL", of 31 March 1965; U.S. Army Project No. 5630, "WORLD WIDE ORDER OF BATTLE", of 1 March 1965; and the U.S. Army Pacific Special Report No. 450, "NORTH VIETNAMESE ORDER OF BATTLE", of 15 March 1965.

~~37-2273~~**SECRET**

SECRET
SECRETVIET CONG MILITARY STRUCTURE

Viet Cong military units fall into three general categories according to the political level to which they are subordinate-regulars, provincial, and militia/guerrilla.

REGULAR UNITS: The best trained and equipped units are those immediately subordinate to the higher VC political echelons. These top category units, properly called regular, go by the Vietnamese term, Chu Luc, literally Main Force. Such units are assigned to the Central Office, South Vietnam (COSVN) and to the five military regions. In general, regular units have a sizeable cadre of PAVN officers and NCO's with the remainder of their strength drawn from local recruiting. In some cases complete units have been sent from the DRV for service in areas with limited recruiting potential. Such units are specially organized, trained, and equipped for Viet Cong service, and are in fact considerably different from a regular PAVN battalion.

PROVINCIAL FORCES: These are the full time forces subordinate to the VC province and district, designated the Dai Phuong, composed of battalions, separate companies and platoons and various other special function units. These units have had a highly instrumental role in the establishment and nurturing of the VC movement in the countryside.

MILITIA/GUERRILLA UNITS: These are composed of part time soldiers of limited training and are subordinate to village and hamlet committees. The militia/guerrilla units are only partially equipped, many of their weapons are rudimentary in nature and are products of their own home work shops. These units provide the backing force to VC political activities at these levels. Such units are responsible for much of the local terrorism, propaganda, and sabotage. Even though not completely armed, these units will support operations conducted by higher echelon VC units in their general area. They usually will not participate in assault operations but will take over many support roles acting as porters, evacuating the wounded and dead, and policing the battlefield for weapons and equipment of value.

VIET CONG FORCE OBJECTIVES

Past VC policy of force structure development has been to build toward the regimental echelon (with organic battalions and support elements) at province level; the company level at district level; the

SECRET
SECRET

TAB-A

SECRET
SECRET

platoon level at village level; and toward squad level at hamlet level. In areas of good VC control these objectives have been achieved in either the regular (military region) or the provincial (province and district) category but generally not in both. Under the guidance of COSVN, where the presence of Chinese Communist advisors has frequently been reported, a more ambitious program has been reported. This would provide for a regular division to be directly subordinate to COSVN, two regiments attached to each military region, and a regiment for each province. Such an objective is probably desired by the Viet Cong leadership and certainly is useful for its psychological value alone. This latter structure would double the present hard core VC strength; and it could be achieved by extensive infiltration of PAVN personnel, improved local recruiting and upgrading of local VC units, and the concomitant mass influx of weapons, ammunition and other supplies from out-of-country. For the future, it is likely that the Viet Cong will continue at the effective covert level seen in the past rather than implement any crash program. Without more effective curtailment of this Communist military expansion than has been seen to date, even this past tempo of activity will permit the VC to achieve these ambitious force objective levels.

SECRET
SECRET

TAB-A

SECRET
SECRETVIET CONG WEAPONS AND EQUIPMENT

The VC possess a conglomeration of weapons of varied origin, ranging from the simple but very effective spike board (caltrop) to US and Chinese manufactured 75mm recoilless rifles and 81mm mortars.

The VC appear to be making some progress toward standardization of types of weapons, but not by origin or manufacture, in their Main Force units. Thus, in the VC rifle company, there is almost certain to be found 60mm mortars, light machineguns and automatic rifles. In the heavy weapons companies of the battalions are to be found 81mm mortars and either 57mm or 75mm recoilless rifles. Some heavy weapons companies are equipped with 12.7mm or .50 caliber machineguns. A sample infantry battalion T/E is as follows:

2x81mm Mortars
6x60mm Mortars
3x57mm Recoilless Rifles
5xLMG's
26x7.62mm Assault Rifles
20xCarbines
Unknown number of SMG's

The most poorly armed elements are the guerrillas. They are equipped largely with home-made grenades, knives, daggers, and simple rifles, shotguns and pistols manufactured in home workshops. Lately however, these elements are receiving more sophisticated weapons from the Military Region Logistical Section.

Individual soldiers of the main and local forces are generally armed with a manufactured bolt-action rifle or submachinegun of French, British, US or USSR origin. The VC have captured large numbers of individual and unit weapons of late US manufacture from RVN military and paramilitary units and it can be expected that these weapons will replace many of the less standard weapons presently in VC hands, inasmuch as locally available ammunition will ease the VC ammunition resupply problem.

There has been a recent increase in the capture of Sino-Soviet Bloc weapons, ammunition and explosives from the VC. The majority

SECRET
SECRET

TAB. 8

SECRET
SECRET

of these have been Chicom submachineguns, 7.62mm ammunition, 57mm recoilless rifles and ammunition and Chicom TNT.

The individual soldier in the main force and local units is normally issued the following items of individual equipment, either brought from the DRV through infiltration channels, procured locally with funds provided from the DRV, or locally manufactured with materials locally purchased:

2 sets of outer clothing (similar to that worn by the surrounding populace)

- 1 mosquito bar
- 1 hammock
- 1 woolen jacket (for troops in mountainous areas)
- 1 plastic sheet approximately 2.5 meters long (ground cloth or shelter half)
- 1 plastic sheet approximately 1.5 meters long (rain coat)
- 1 cap
- 1 waist belt
- 1 pair of rubber sandals or sneakers
- 1 locally produced canteen
- 1 mess kit

Each VC main force squad is normally equipped with 1 shovel, 1 kitchen knife, 2 kettles and 2 pots.

SECRET
SECRET

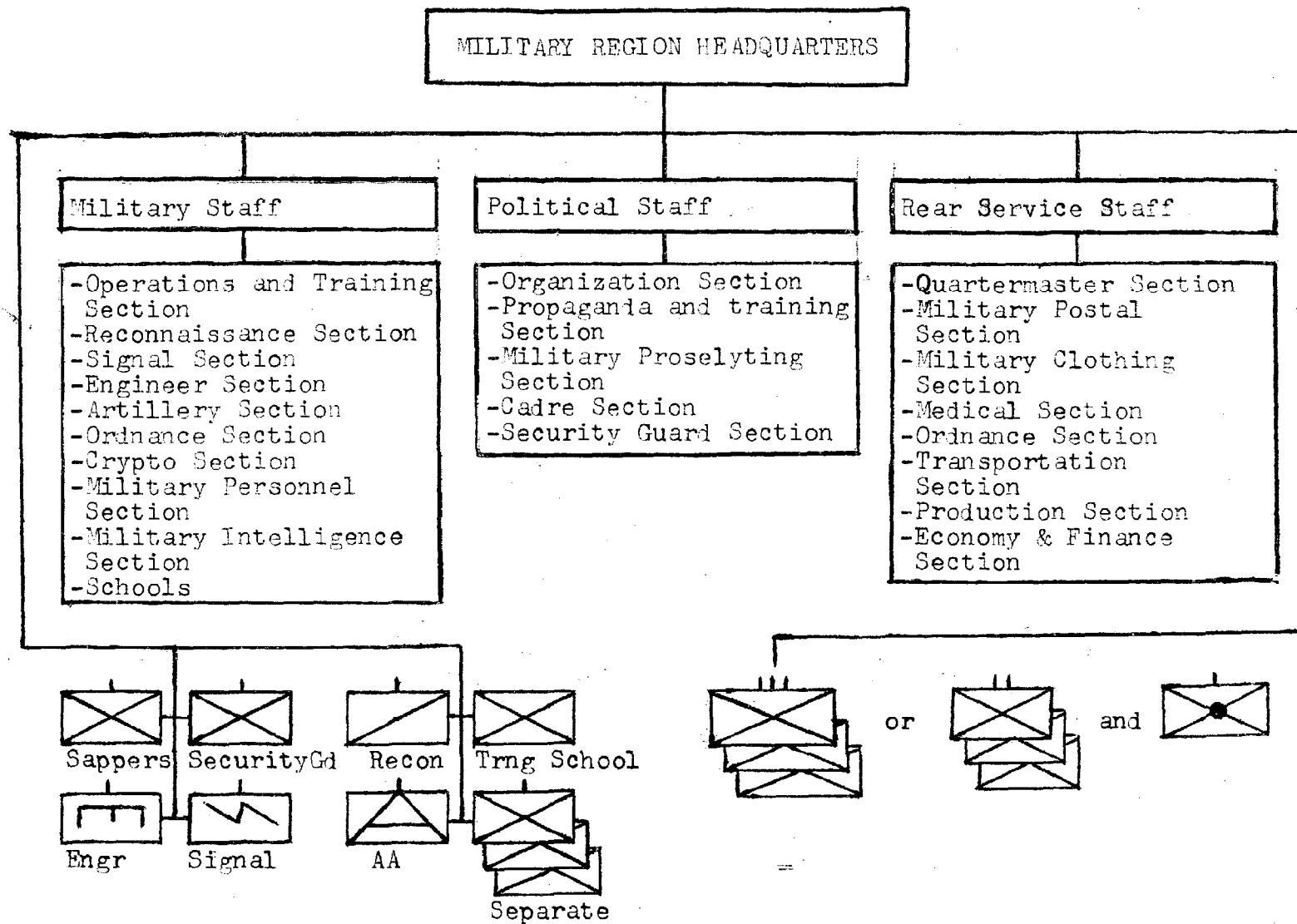
VIET CONG ORGANIZATION MODELS

&

I CORPS ASSIGNED UNITS

TAB-C

VIET CONG MILITARY REGION HEADQUARTERS



DECLASSIFIED

SECRET

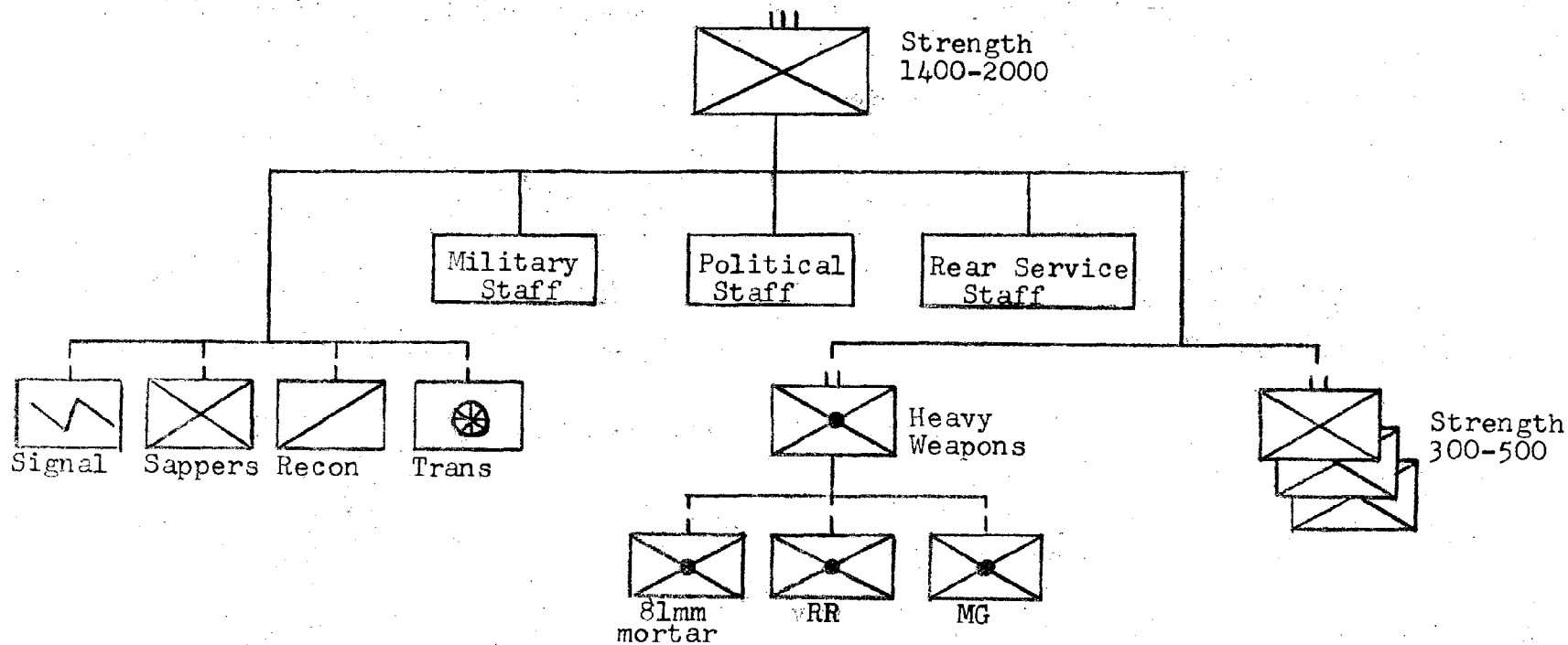
7A8-2

SECRET

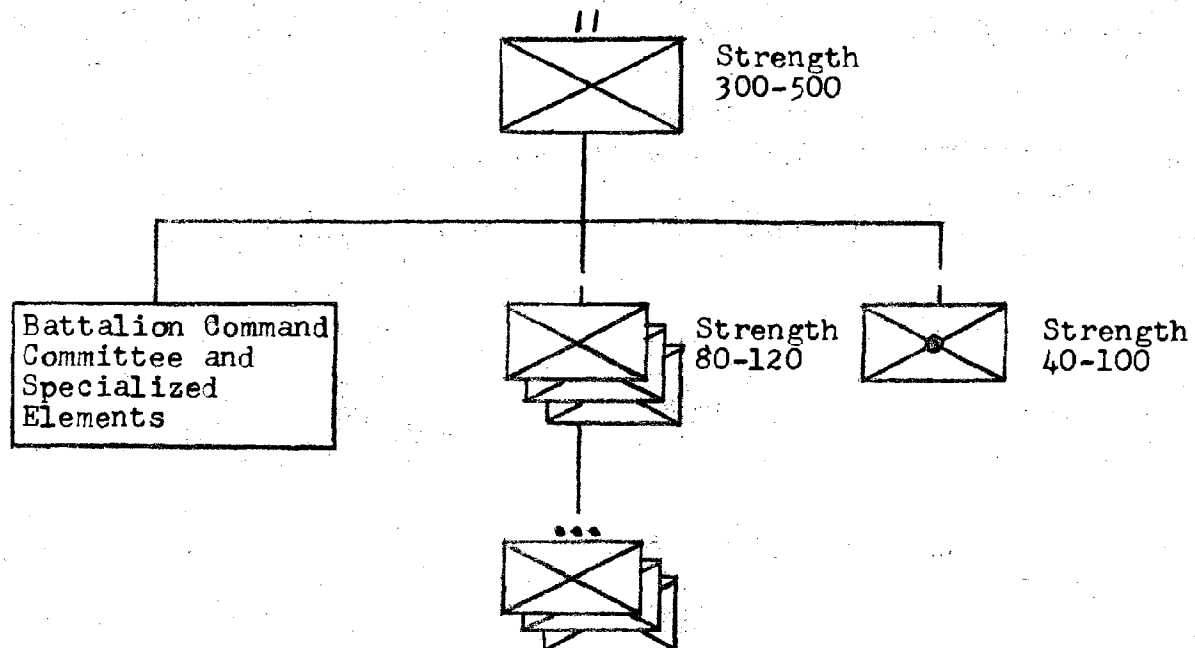
DECLASSIFIED

SECRET

VIET CONG INFANTRY REGIMENT

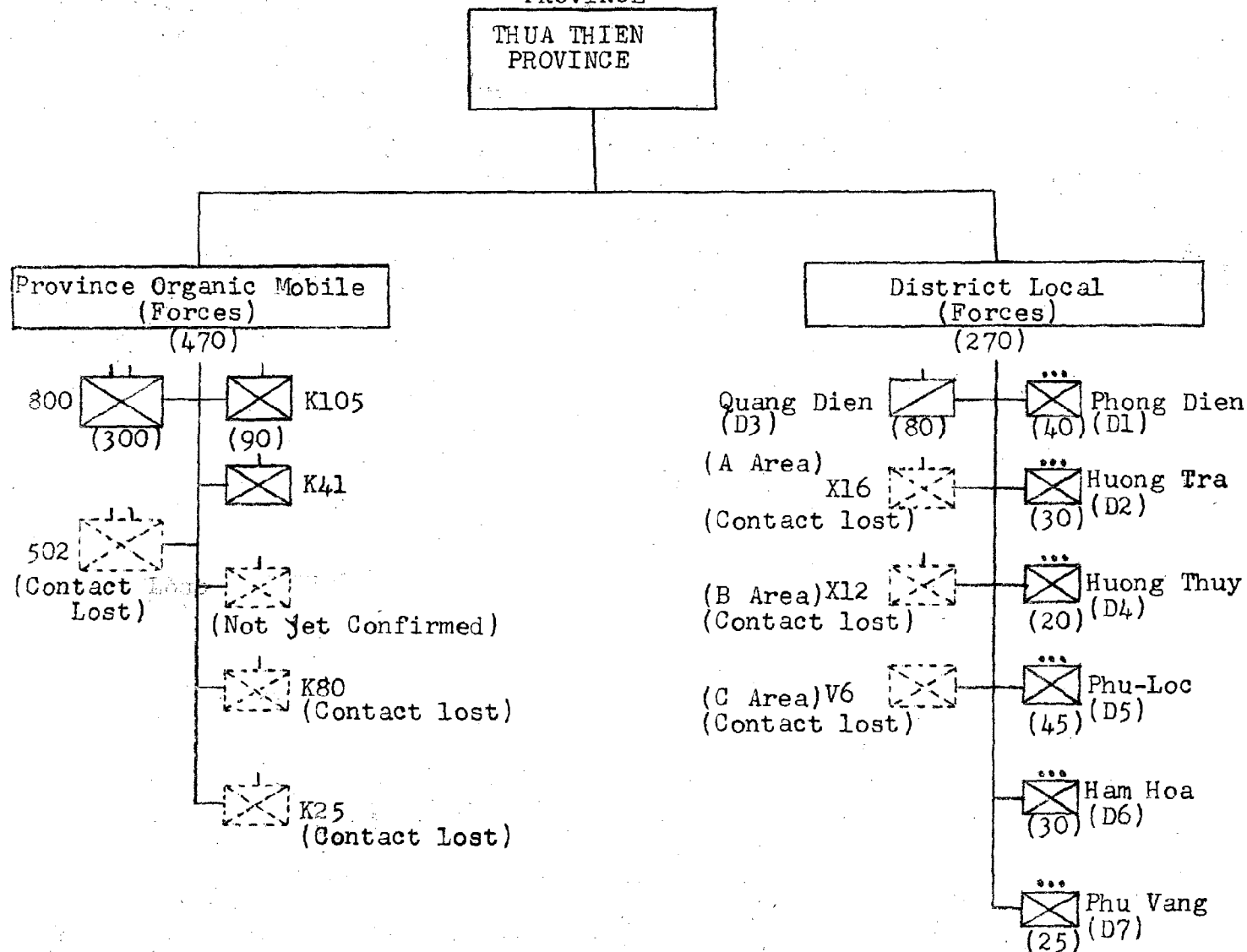


798-2
SECRET

SECRETVIET CONG INFANTRY BATTALION**SECRET**

TAB-C

ORGANIZATION CHART OF THE VC ARMED FORCES IN THUA THIEN PROVINCE



SECRET

DECLASSIFIED

DECLASSIFIED

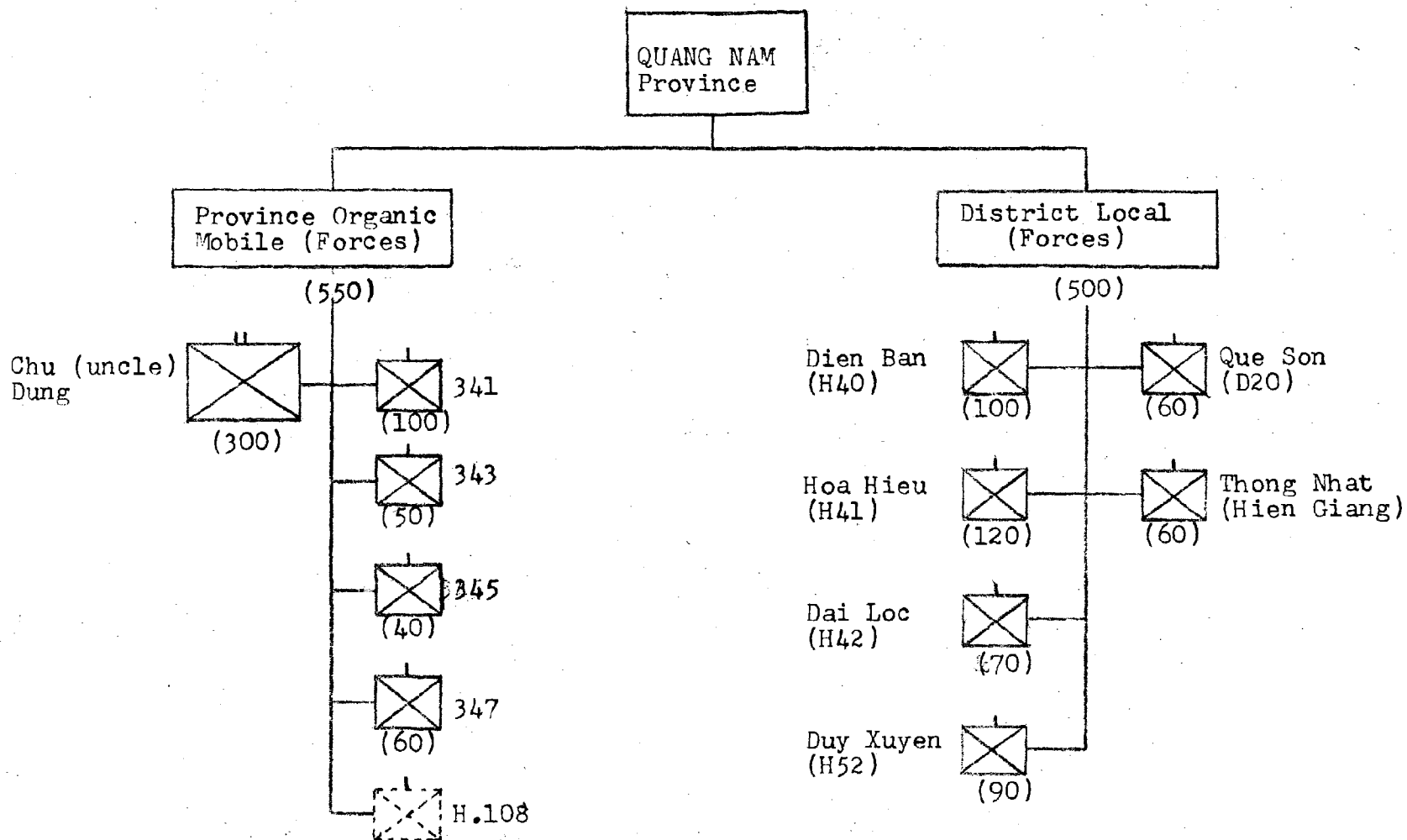
SECRET

7A8-C

ORGANIZATION CHART OF THE VC ARMED FORCES IN QUANG NAM PROVINCE

SECRET

DECLASSIFIED

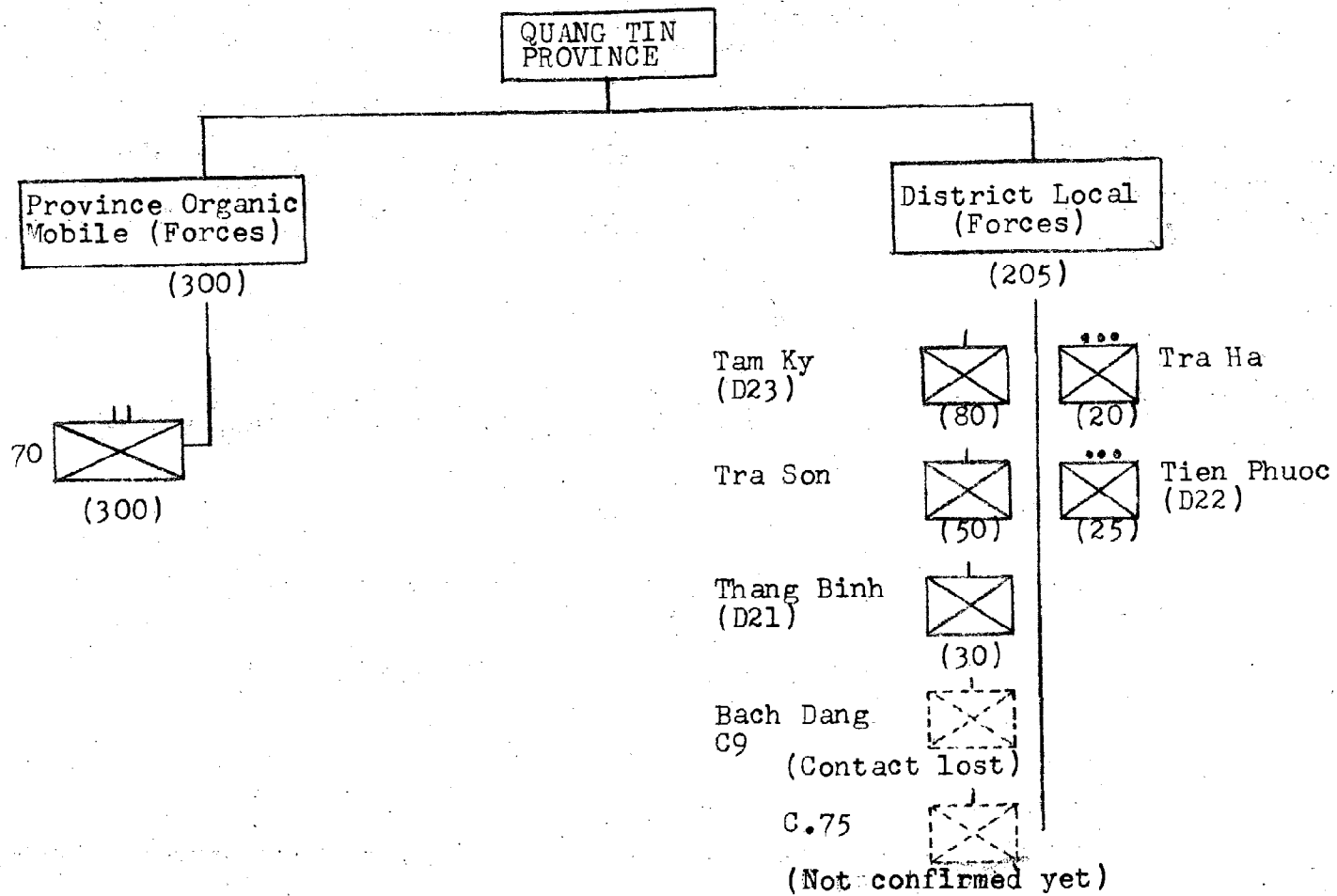


DECLASSIFIED

SECRET

TA3-2

ORGANIZATION CHART OF VC ARMED FORCES IN QUANG TIN PROVINCE



SECRET

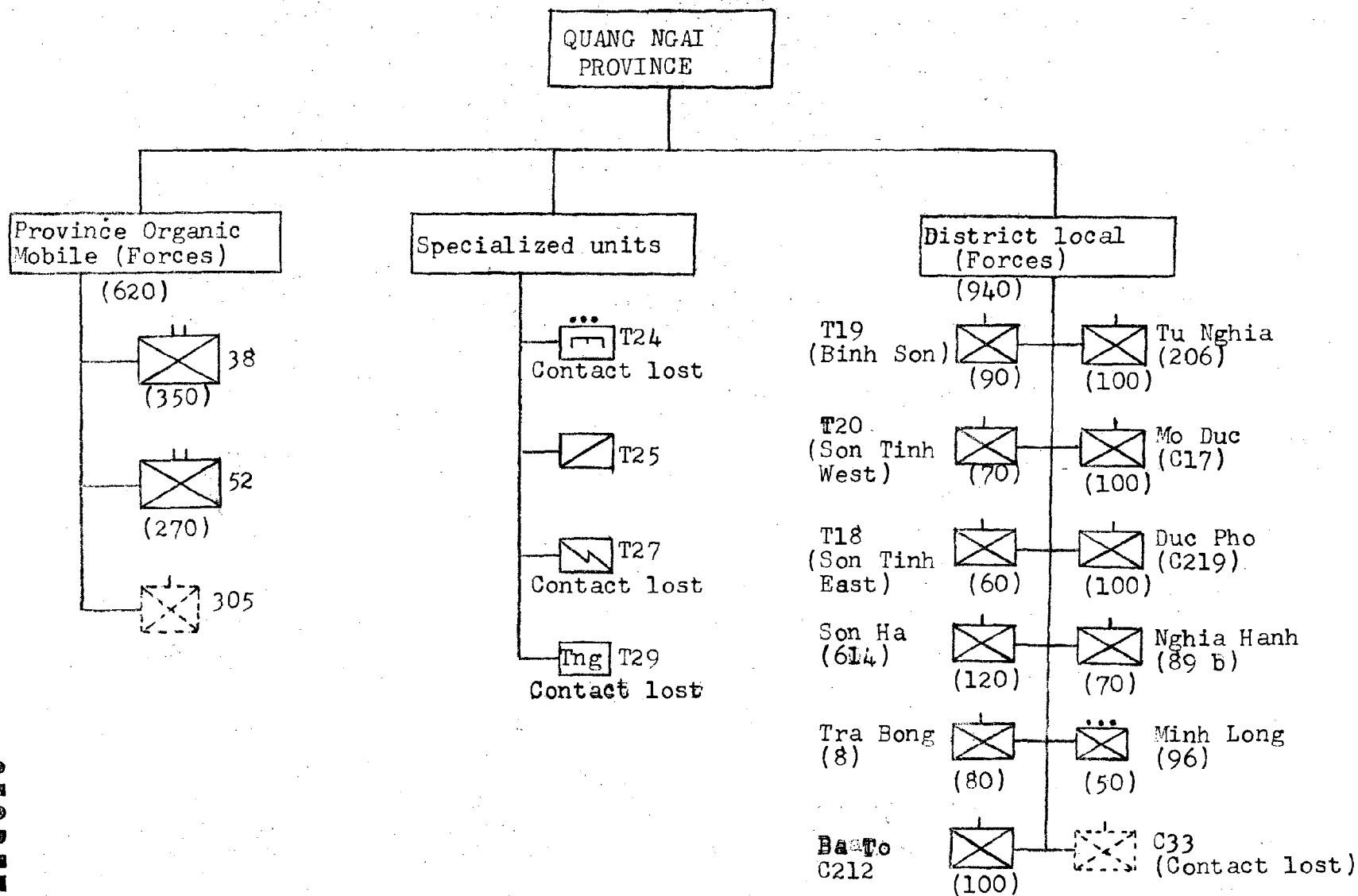
DECLASSIFIED

DECLASSIFIED

SECRET

7A8-C

ORGANIZATION CHART OF VC ARMED FORCES IN QUANG NGAI PROVINCE



DECLASSIFIED

SECRET

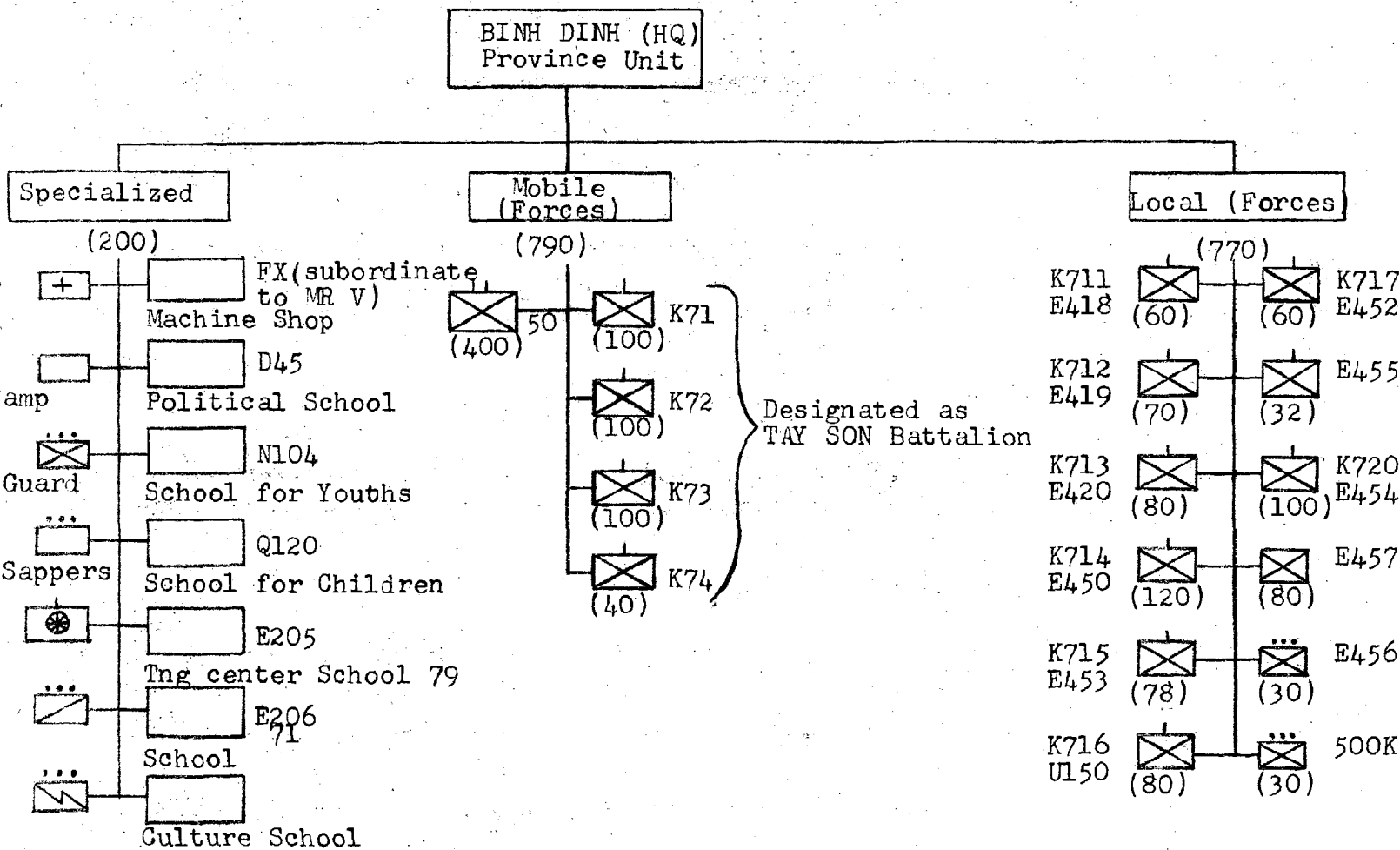
798-2

SECRET

DECLASSIFIED

ORGANIZATION CHART OF VC ARMED FORCES IN BINH DINH PROVINCE

SECRET

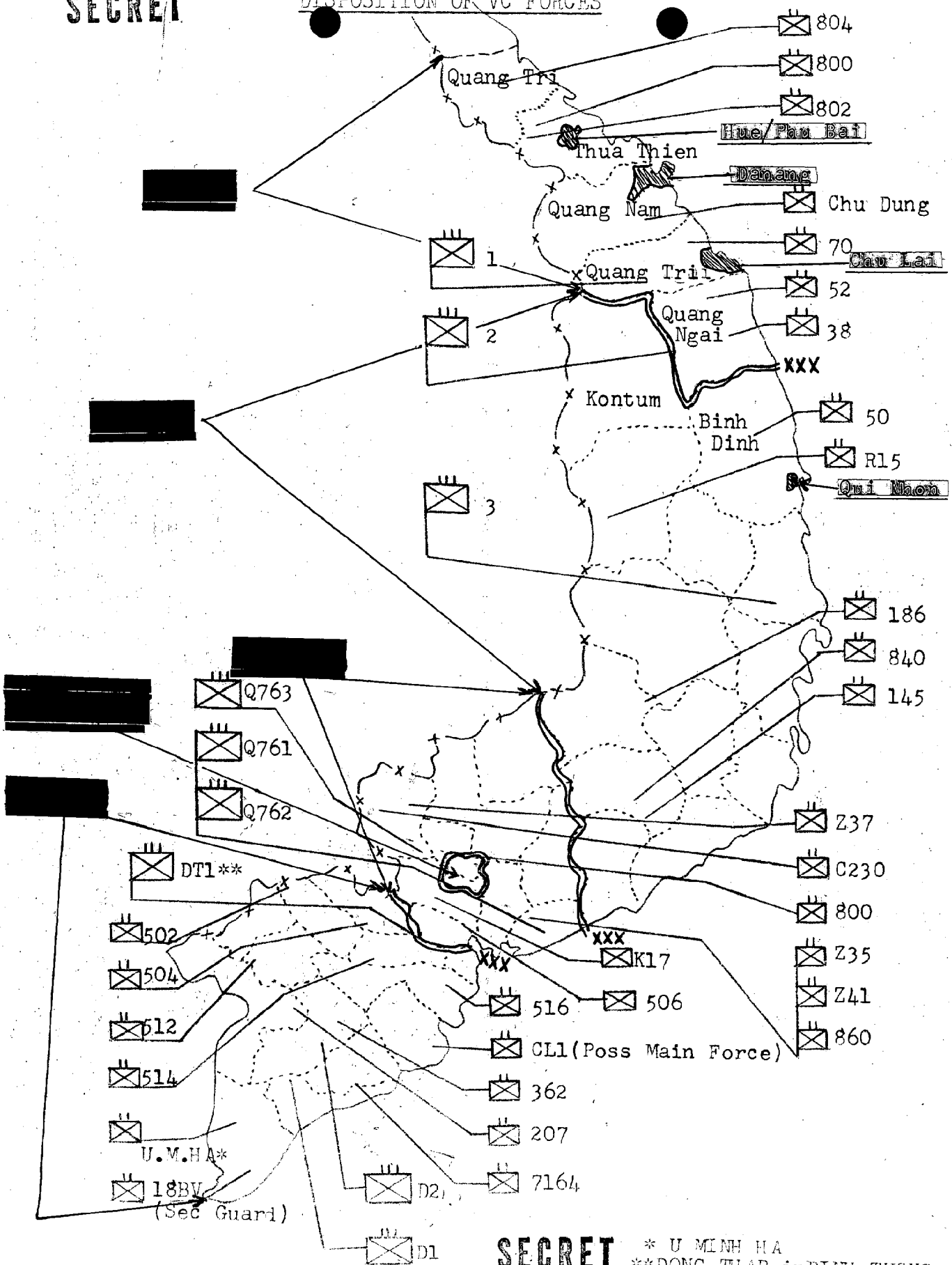


DECLASSIFIED

SECRET

7A8-2

DECLASSIFIED

SECRETDISPOSITION OF VC FORCES**SECRET**

* U MINH HA
 **DONG THAP in DINH TUONG

TAB-D

I Corps

II Corps

III Corps

Capital Mil.
District

IV Corps

SECRETNORTH VIETNAMESE ARMY

The North Vietnamese Army (PAVN) is a well trained combat effective force capable of coordinated division-level offensive and defensive conventional operations as well as sustained guerrilla campaigns. The PAVN is capable of maintaining internal security, repelling aggression by neighboring countries, with the exception of Communist China, and invading and defeating military forces of other Southeast Asian countries. Its combat trained personnel, inured to physical hardships, are capable of high-level guerrilla warfare and paramilitary activity in Laos and South Vietnam. PAVN leadership is dedicated and capable, resulting in a disciplined organization whose loyalty is assured through tight party control. The principal limitations of the North Vietnamese Army are; deficiencies in advanced weapons and heavy equipment, an underdeveloped and vulnerable transportation system, a relatively low level of education and a lack of technical skills.

TYPES OF TACTICAL UNITS

a. Infantry Division: The infantry division normally has a headquarters; three infantry regiments; three field artillery or mortar battalions; and anti-aircraft artillery battalion; engineer, medical, and signal battalions; and company-size service units. Estimated actual strength of the division is 12,500. The field artillery and mortar battalions are grouped under an artillery regimental headquarters.

b. 351st Artillery Division: The 351st Artillery Division, which appears to include a headquarters and up to 6 artillery regiments, probably provides tactical support to the Tonkin Delta infantry units. The designation "351", however, seems to encompass a wider range of activities, to include an artillery headquarters in Hanoi and an artillery training center at Son Tay. In the same way, the 367th AAA Division, besides commanding the AAA guns deployed throughout the country, probably serves as a AAA Command Headquarters.

c. Infantry Brigade: The infantry brigade which has emerged since 1958 probably contains three infantry battalions, but may have up to five. Its artillery comprises a battalion of field guns and one of AA guns. Brigade troops, after the pattern of the infantry division, provide appropriate service and combat support units. Estimated actual strength is 5,000.

SECRET

TAB-E

SECRET

d. Infantry Regiment (Divisional): The divisional infantry regiment consists of a headquarters, three infantry battalions, one heavy weapons battalion, and service units. Estimated actual strength of the divisional infantry regiment is 3,080. The separate infantry regiments are similarly organized.

e. Infantry Battalion: The infantry battalion consists of a battalion headquarters, a heavy weapons company and three rifle companies. Its heavy weapons company includes 7.62 HMG's, 82 MM mortars and 57MM recoilless rifles. Estimated battalion strength is 700.

f. Infantry Company: The infantry company consists of a company headquarters, a heavy weapons platoon and three infantry platoons. The heavy weapons platoon consists of 7.62MM HMG's, 60MM mortars and 90MM rocket launchers. Estimated company strength is 160.

SUMMARY OF REGULAR ARMY COMBAT UNITS

- 6 - Infantry Divisions
- 1 - Artillery Division
- 1 - Antiaircraft Artillery Division
- 8 - Infantry Brigades
- 8 ~~10~~ - Infantry Regiments
- 1 - Armored Regiment

Total Army Personnel Strength: 226,600

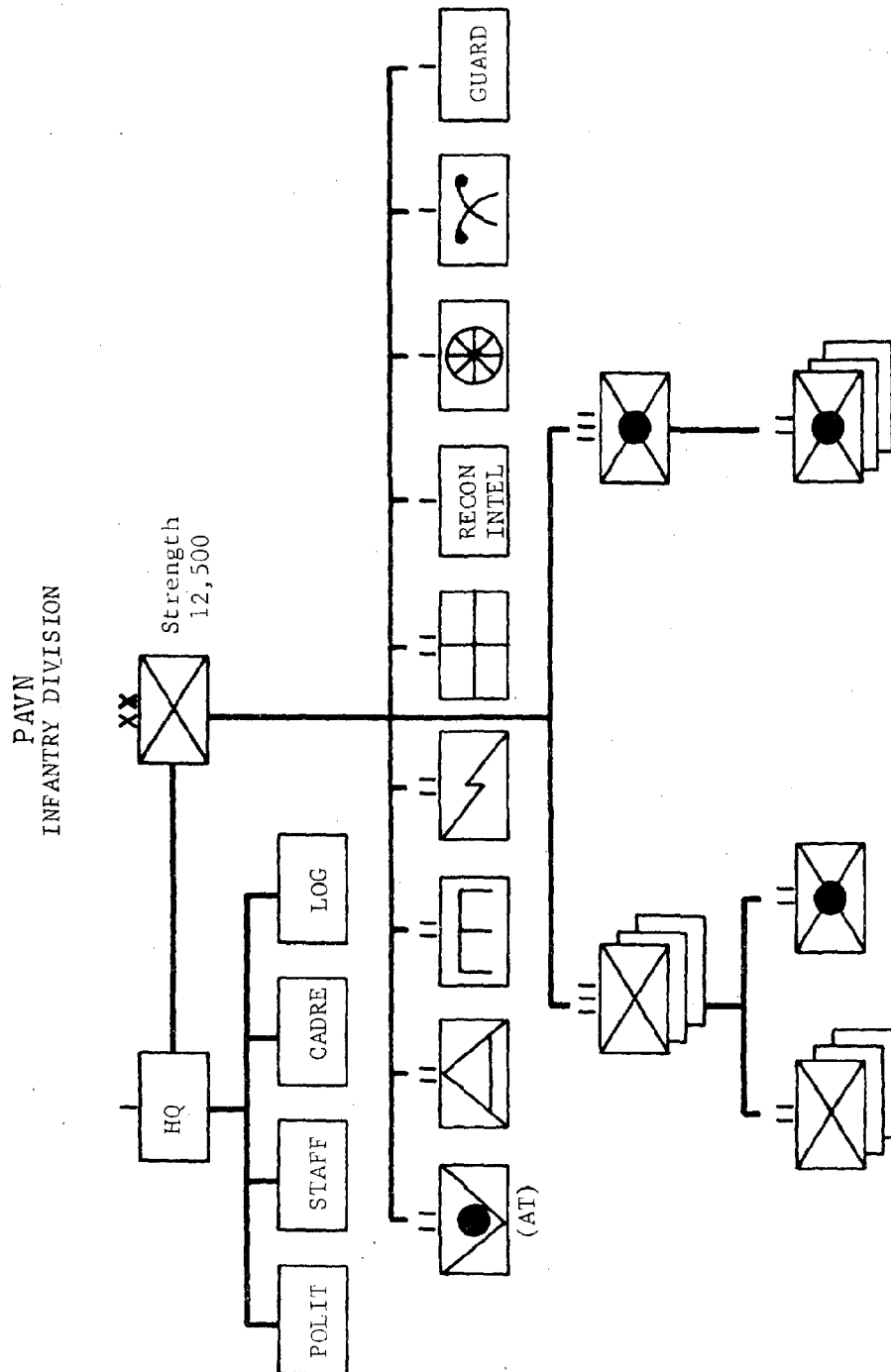
SECRET

TAB-E

PAVN ORGANIZATION MODELS

TAB-F

SECRET

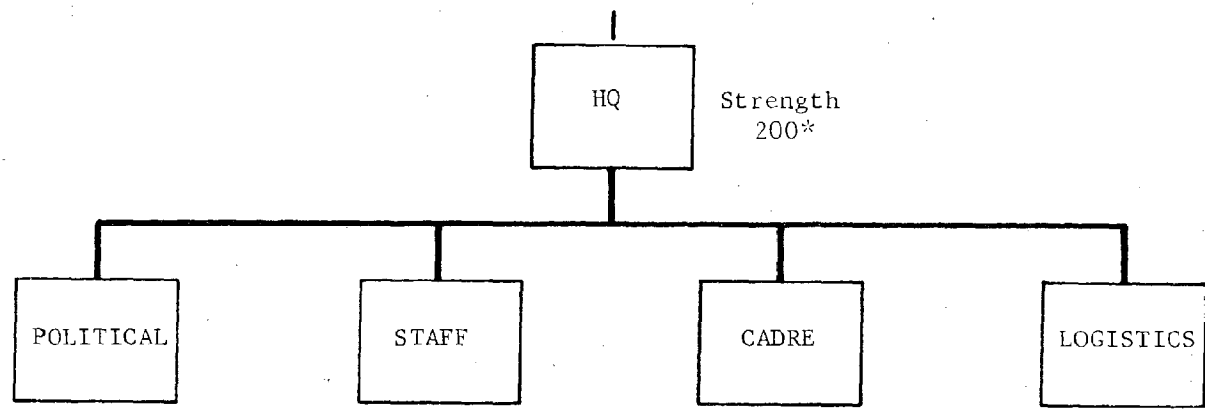


SECRET

SECRET

DECLASSIFIED

PAVN
HEADQUARTERS COMPANY/INFANTRY DIVISION



PERSONNEL

Officers 10*
EM 190*

WEAPONS

7.62mm Pistol 20*
7.62mm Carbine) 150*
7.62mm Rifle)
7.62mm LMG
7.62mm HMG

VEHICLES

Cargo 4x4 or 6x6 2
Utility 1/4 ton 6

SIGNAL

POLITICAL

Party Organization
Propaganda & Training of Military
Mass Civil Propaganda
Party Records
Social & Cultural Activities
Counter-Subversion

CADRE

Personnel Records
Administration
Replacement & Training School

STAFF

Operations
Training
Intelligence
Reconnaissance
Tactics & Strategy
Security
Signal
Engineer

LOGISTICS

Quartermaster
Military Equipment
Accounting & Management
Procurement
Ordnance
Transportation
Medical
Chemical

*Unconfirmed

DECLASSIFIED

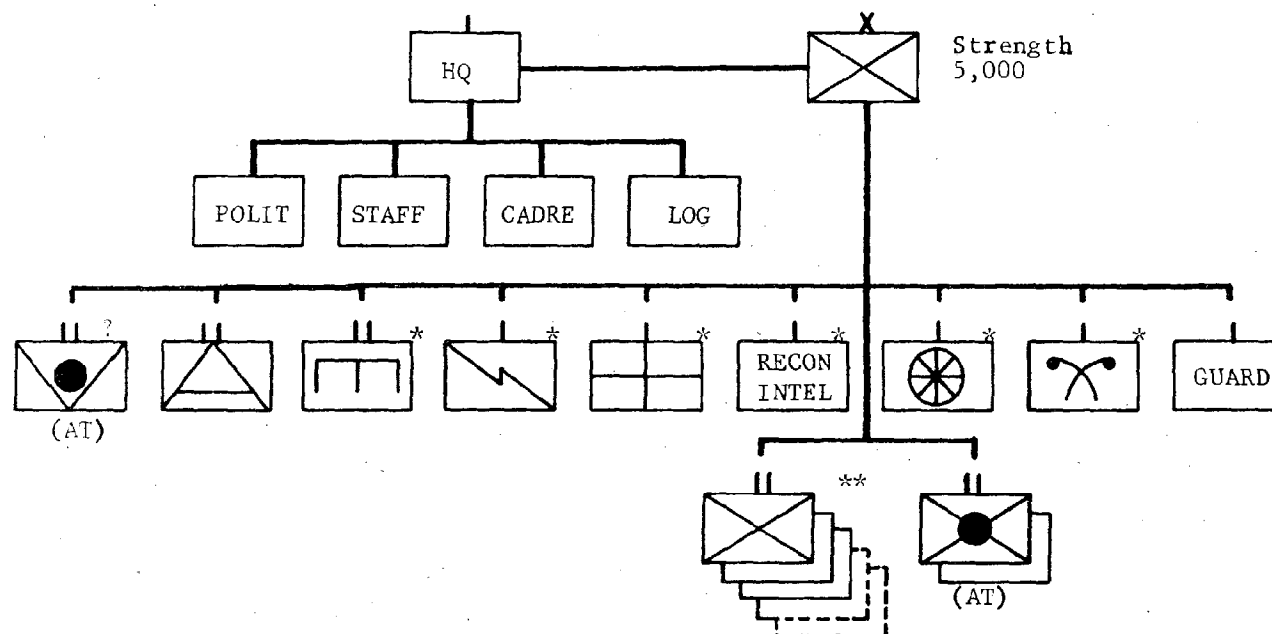
SECRET

7A B. F

SECRET

DECLASSIFIED

PAVN
INFANTRY BRIGADE



* Echelon & type confirmed (Composition probably the same as similar element in an infantry regiment).

** A brigade may have from three to five battalions.

DECLASSIFIED

SECRET

TAA 15

SECRET

PAVN
INFANTRY REGIMENT/INFANTRY DIVISION

PERSONNEL*

Officers 155
EM 2,925

WEAPONS

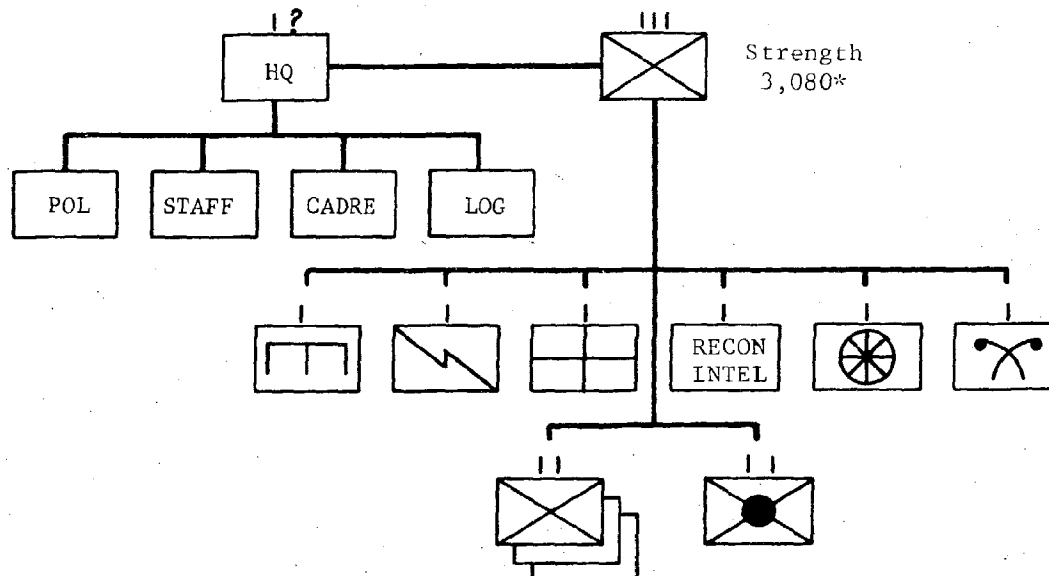
7.62mm Pistol 155*
7.62mm Carbine 2,590*
7.62mm Rifle
7.62mm SMG
7.62mm LMG 81
7.62mm HMG 36
12.7mm HMG 9
14.5mm HMG
60mm Mortar 18
82mm Mortar 27
120mm Mortar
RPG-2 RL (AT) 81
57mm RR 27
75mm RR 9

VEHICLES*

Cargo 6x6 or 4x4 15
Utility 1/4 ton 11
Motorcycle

SIGNAL

702 Handi-talkie
71B Walkie-talkie
102E
103

ENGINEER EQUIPMENT

*Unconfirmed

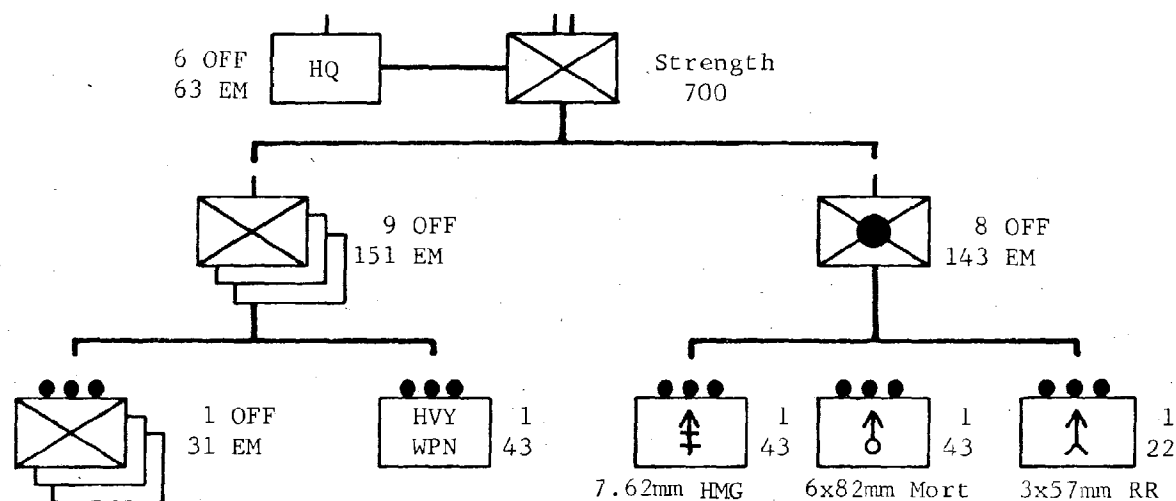
SECRET

SECRET

DECLASSIFIED

PAVN

INFANTRY BATTALION / INFANTRY REGIMENT

PERSONNEL

| | |
|----------|-----|
| Officers | 41 |
| EM | 659 |

WEAPONS

| | |
|----------------|-----|
| 7.62mm Pistol | 41 |
| 7.62mm Carbine | 244 |
| 7.62mm Rifle | 138 |
| 7.62mm LMG | 27 |
| 7.62mm HMG | 12 |
| 60mm Mortar | 6 |
| 82mm Mortar | 6 |
| RPG-2 RL (AT) | 27 |
| 57mm RR | 9 |

VEHICLES

| |
|------------------|
| Cargo 4x4 or 6x6 |
| Utility 1/4 ton |

SIGNAL

| |
|-------------------|
| 702 Handi-talkie |
| 71B Walkie-talkie |

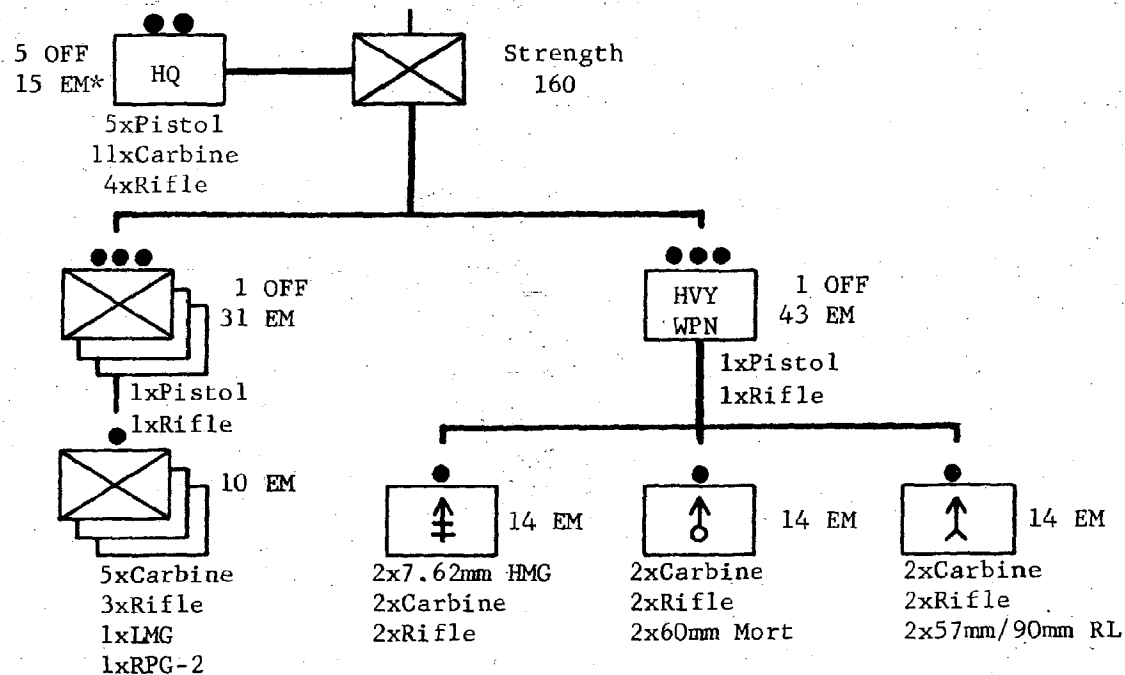
DECLASSIFIED

SECRET

TA8-F

SECRET

PAVN
INFANTRY COMPANY / INFANTRY BATTALION / INFANTRY REGIMENT



PERSONNEL
Officers 9
EM 151

WEAPONS
7.62mm Pistol 9
7.62mm Carbine 62
7.62mm Rifle 41
7.62mm LMG 9
7.62mm HMG 2
60mm Mortar 2
90mm RL
RPG-2 RL (AT) 9
57mm RR 2

VEHICLES
Cargo 4x4 or 6x6
Utility 1/4 ton

SIGNAL

*Estimated Strength

SECRET

| EQUIPMENT SUMMARY | | | | | | | | | | | | | | | | | | | | | | | | | | | | | | |
|---|---------|----------------|----------------|-----------------|------------------|-----------------|-----------------|-------------------|-------------------|-----------------|-------------------|----------------------------------|------------------|--------------------|-------------------|-------------------|---------------------|---------------------|-------------------|----------------------------------|----------------|--------------------|--------------------|--------------------|------------------|-------------------|--------------------|---------------------|---------------------|---|
| | INF DIV | Hq Co. Inf Div | AT Bn. Inf Div | AAA Bn. Inf Div | Engr Bn. Inf Div | Sig Bn. Inf Div | Med Bn. Inf Div | Recon Co. Inf Div | Trans Co. Inf Div | Cml Co. Inf Div | Guard Co. Inf Div | INF REGT. INF DIV (3 per Div) | Hq Co. Inf Regt. | Engr Co. Inf Regt. | Sig Co. Inf Regt. | Med Co. Inf Regt. | Recon Co. Inf Regt. | Trans Co. Inf Regt. | Cml Co. Inf Regt. | INF BN. INF REGT (3 per Regt) | Inf Co. Inf Bn | Hv Wpns Co. Inf Bn | Hv Wpns Bn. Inf Bn | ARTY REGT. INF DIV | Hq Co. Arty Regt | Sig Co. Arty Regt | Med Sec. Arty Regt | Recon Co. Arty Regt | Trans Co. Arty Regt | ARTY BN. ARTY REGT (3 per Arty Regt) |
| | (1) | (2) | (3) | (4) | (5) | (6) | (7) | (8) | (9) | (10) | (11) | (12) | (13) | (14) | (15) | (16) | (17) | (18) | (19) | (20) | (21) | (22) | (23) | (24) | (25) | (26) | (27) | (28) | (29) | (30) |
| PERSONNEL | | | | | | | | | | | | | | | | | | | | | | | | | | | | | | |
| Officers: | 696 | 10 | 20 | 14 | 20 | 12 | 20 | 10 | 8 | 5 | 8 | 155 | | | | | | | | 41 | 9 | 8 | | 104 | | | | | | |
| Enlisted: | 11,804 | 190 | 210 | 222 | 380 | 238 | 230 | 150 | 142 | 95 | 116 | 2,925 | | | | | | | | 659 | 151 | 143 | | 1,056 | | | | | | |
| TOTAL: | 12,500 | 200 | 230 | 236 | 400 | 250 | 250 | 160 | 150 | 100 | 124 | 3,080 | | | | | | | | 700 | 160 | 151 | 450 | 1,160 | | | | | | |
| SMALL ARMS | | | | | | | | | | | | | | | | | | | | | | | | | | | | | | |
| 7.62mm Pistol (Soviet M-1933/Chicom Type 51) | | 20 | 20 | | 20 | 4 | | 4 | 4 | 4 | | 155 | | | | | | | | 41 | 9 | 8 | | | | | | | | |
| 7.62mm Carbine (Soviet SKS/Chicom Type 56) | | 150 | X | | 300 | 200 | 150 | X | 100 | 75 | | 2,590 | | | | | | | | 244 | 62 | 30 | | 960 | | | | | | |
| 7.62mm Assault Rifle (Soviet AK-47/Chicom Type 56) | | X | 180 | | X | | X | 130 | | X | | X | | | | | | | | 138 | 41 | 33 | | | | | | | | |
| 7.62mm SMG (Soviet PPSH-41/Chicom Type 50) | | X | X | | X | | 6 | | | | | X | | | | | | | | X | X | | | | | | | | | |
| 7.62mm LMG (Soviet RPD/Chicom Type 56) | | | | | 18 | | | | | | | 81 | | | | | | | | 27 | 9 | | | | | | | | | |
| 7.62mm HMG (Soviet SG-43 Goryunov/Chicom Type 53) | | | | | | | | | | | | 36 | | | | | | | | 12X | 2 | | | | | | | | | |
| 12.7mm HMG (Soviet DShK/Chicom Type 54) | | | | | | | | | | | | 9 | | | | | | | | | | | 9 | | | | | | | |
| MORTARS | | | | | | | | | | | | | | | | | | | | | | | | | | | | | | |
| 60mm Mort (Chicom Type 31) | | 54 | | | | | | | | | | 18 | | | | | | | | 6 | 2 | | | | | | | | | |
| 82mm Mort (Soviet M-1937/Chicom copy) | | 81 | | | | | | | | | | 27 | | | | | | | | 6 | | 6 | 9 | | | | | | | |
| 120mm Mort (Soviet M-1943/Chicom copy) | | 12 | | | | | | | | | | | | | | | | | | | | | X | 12 | | | | | | X |
| ARTILLERY | | | | | | | | | | | | | | | | | | | | | | | | | | | | | | |
| 57mm Gun (Soviet M-1943/Chicom Type 55) | | X | | X | | | | | | | | | | | | | | | | | | | | | | | | | | |
| 75mm Gun (German PAK-40) | | X | | | | | | | | | | | | | | | | | | | | | | | | | | | | |
| 75mm How (US M1A1) | | 12 | | | | | | | | | | | | | | | | | | | | | | | 12 | | | | | |
| 76.2mm Gun (Soviet M-1942/Chicom Type 54) | | 12 | | 12 | | | | | | | | | | | | | | | | | | | | | | | | | | |
| 85mm Field Gun (Soviet D-44/Chicom copy) | | X | | X | | | | | | | | | | | | | | | | | | | | | | | | | | |
| 105mm How (US M2) | | 12 | | | | | | | | | | | | | | | | | | | | | | | | | | | | |
| 122mm How (Soviet M-1938/Chicom copy) | | X | | | | | | | | | | | | | | | | | | | | | | | X | | | | | |
| 122mm Gun (Soviet M-31/37) or 152mm Gun (Soviet M-1937 (WL 20) POSSIBLE)) | | | | | | | | | | | | | | | | | | | | | | | | | | | | | | |
| RECOILLESS | | | | | | | | | | | | | | | | | | | | | | | | | | | | | | |
| RPG-2 RL (AT) (Soviet RPG-2/Chicom copy) | | | | | | | | | | | | 81 | | | | | | | | 27 | 9 | | | | | | | | | |
| 90mm RL (Chicom Type 51, copy of US 3.5") | | | | | | | | | | | | | | | | | | | | | | | | | | | | | | |
| 57mm RR (Chicom Type 36, copy of US) | | 81 | | | | | | | | | | 27 | | | | | | | | 9 | 2 | 3 | | | | | | | | |
| 75mm RR (Chicom Type 52, copy of US) | | 27 | | | | | | | | | | 9 | | | | | | | | | | | 9 | | | | | | | |
| ANTI-AIRCRAFT ARTILLERY | | | | | | | | | | | | | | | | | | | | | | | | | | | | | | |
| 14.5mm HMG (Soviet ZPU-4) | | X | | | | | | | | | | | | | | | | | | | | | | | | | | | | |
| 37mm AA Gun (Soviet M-1939/Chicom Type 55) | | 16 | | | 16 | | | | | | | | | | | | | | | | | | | | | | | | | |
| 57mm AA Gun (Soviet S-60) | | | | | | | | | | | | | | | | | | | | | | | | | | | | | | |
| 85mm AA Gun (Soviet M-1939) | | | | | | | | | | | | | | | | | | | | | | | | | | | | | | |
| 88mm Gun (German M-18, M-36, M-37) | | | | | | | | | | | | | | | | | | | | | | | | | | | | | | |
| 100mm AA Gun (Soviet KS-19) | | | | | | | | | | | | | | | | | | | | | | | | | | | | | | |
| VEHICLES | | | | | | | | | | | | | | | | | | | | | | | | | | | | | | |
| GAZ 51 (4 x 2) | | X | X | | X | | | X | X | X | | X | | | | | | | | | | | | | | | | | | X |
| GAZ 63 (4 x 4) | | 6 | 2 | | | 2 | | 2 | 2 | 2 | | 11 | | | | | | | | | | | | | | | | | 2 | |
| GAZ 67B (4 x 4) | | X | X | | X | | | X | X | X | | X | | | | | | | | | | | | | | | | | X | |
| GAZ 69 (4 x 4) | | | X | | 6 | 10 | | | | | | | | | | | | | | | | | | | | | | | | |
| GAZ 46 (4 x 4)(Amphibious) | | | | | | | | | | | | | | | | | | | | | | | | | | | | | | |
| ZIL 150 (4 x 2) | | | | | | | | X | | X | X | X | | | | | | | | | | | | | | | | | | |
| ZIL 164 (4 x 2) | | | | | | | | X | | X | X | X | | | | | | | | | | | | | | | | | | |
| ZIL 151 (6 x 6) | | 2 | 15 | 15 | | X | | | | 50 | 1 | 15 | | | | | | | | | | | | 50 | | | | | 15 | |
| ZIL 157 (6 x 6) | | X | X | X | | X | | | | X | X | X | | | | | | | | | | | | X | | | | | X | |
| ZIL 485 (6 x 6)(Amphibious) | | | | | | | | | | | | | | | | | | | | | | | | | | | | | | |
| Motorcycle (2 Wheel) | | | | | | | | | | | | | | | | | | | | | | | | | | | | | | |
| Motorcycle (3 Wheel) | | | | | | | | | | | | | | | | | | | | | | | | | | | | | | |
| ambulance | | | | | | | | | | | | | | | | | | | | | | | | | | | | | | |
| ARMORED VEHICLES | | | | | | | | | | | | | | | | | | | | | | | | | | | | | | |
| BTR-40 Armored Personnel Carrier | | | | | | | | | | | | | | | | | | | | | | | | | | | | | | |
| SB-76 Support Gun (76mm) | | | | | | | | | | | | | | | | | | | | | | | | | | | | | | |
| PT-76 Amphibious Tank | | | | | | | | | | | | | | | | | | | | | | | | | | | | | | |
| T-34 Tank (85mm) | | | | | | | | | | | | | | | | | | | | | | | | | | | | | | |
| SIGNAL | | | | | | | | | | | | | | | | | | | | | | | | | | | | | | |
| 702 Handi-Talkie | | | | | | | | | | | | | | | | | | | | | | | | | | | | | | |
| 713 Walkie-Talkie | | | | | | | | | | | | | | | | | | | | | | | | | | | | | | |
| 142E (Radio) | | | | | | | | | | | | | | | | | | | | | | | | | | | | | | |
| 143 (Radio) | | | | | | | | | | | | | | | | | | | | | | | | | | | | | | |
| Radec (Fire Control) | | | | | | | | | | | | | | | | | | | | | | | | | | | | | | |
| Radec (EW/GCI) | | | | | | | | | | | | | | | | | | | | | | | | | | | | | | |
| Radec (Height Finder) | | | | | | | | | | | | | | | | | | | | | | | | | | | | | | |

LEGEND: - Obsolete
X - Equipment types interchangeable and/or mixed

SECRET

SECRET

- Indicates TOE Chart page numbers

SECRET

| EQUIPMENT SUMMARY | INF BDE | | | | | | | | | | | | | INF BN (3 to 5 per Bde) | ARTY BN (2 per Bde) |
|---|---------|------|------|------|------|------|------|------|------|------|------|------|------|----------------------------|------------------------|
| | (31) | (32) | (33) | (34) | (35) | (36) | (37) | (38) | (39) | (40) | (41) | (42) | (43) | | |
| PERSONNEL | | | | | | | | | | | | | | | |
| Officers: | 308 | 8 | 20 | 14 | 15 | 7 | 15 | 10 | 5 | 8 | 8 | 49 | 23 | | |
| Enlisted: | 4,697 | 192 | 210 | 222 | 331 | 83 | 160 | 150 | 145 | 92 | 116 | 602 | 295 | | |
| TOTAL: | 5,000 | 200 | 230 | 236 | 346 | 90 | 175 | 160 | 150 | 100 | 124 | 851 | 318 | | |
| SMALL ARMS | | | | | | | | | | | | | | | |
| 7.62mm Pistol (Soviet M-1933/Chicom Type 51) | | | 20 | | 15 | 7 | 15 | 10 | 5 | 8 | | 49 | 23 | | |
| 7.62mm Carbine (Soviet SKS/Chicom Type 56) | | | | | | | | | | | | | | | |
| 7.62mm Assault Rifle (Soviet AK-47/Chicom Type 56) | | | | | | | | | | | | | | | |
| *7.62mm SMG (Soviet PPSH-41/Chicom Type 50) | | | | | | | | | | | | | | | |
| 7.62mm LMG (Soviet RPD/Chicom Type 56) | 81-130* | | | | | | | | | | | 27 | | | |
| 7.62mm HMG (Soviet SG-43 Goryunov/Chicom Type 53) | 18-30* | | | | | | | | | | | 6 | | | |
| 12.7mm HMG (Soviet DShK/Chicom Type 54) | 18-30* | | | | X | | | | | | | 6 | | | |
| MORTARS | | | | | | | | | | | | | | | |
| *80mm Mort (Chicom Type 31) | 18-30* | | | | | | | | | | | 6 | | | |
| 82mm Mort (Soviet M-1937/Chicom copy) | 18-30* | | | | | | | | | | | 6 | | | |
| 120mm Mort (Soviet M-1943/Chicom copy) | 8 | | | | | | | | | | | | | | |
| ARTILLERY | | | | | | | | | | | | | | | |
| 57mm Gun (Soviet M-1943/Chicom Type 55) | | | | X | | | | | | | | | | | |
| *75mm Gun (German PAK-40) | | | | X | | | | | | | | | | | |
| 75mm How (US M1A1) | 8 | | | | | | | | | | | | | 4 | |
| 76.2mm Gun (Soviet M-1942/Chicom Type 54) | | | | 12 | | | | | | | | | | | |
| 85mm Field Gun (Soviet D-44/Chicom copy) | | | | X | | | | | | | | | | | |
| 105mm How (US M2) | 8 | | | | | | | | | | | | | 4 | |
| 122mm How (Soviet M-1938/Chicom copy) | X | | | | | | | | | | | | | X | |
| 122mm Gun (Soviet M-31/37) or 152mm Gun (Soviet M-1937 (ML 20) POSSIBLE) | | | | | | | | | | | | | | | |
| RECOILLESS | | | | | | | | | | | | | | | |
| RPG-2 RL (AT) (Soviet RPG-2/Chicom copy) | 81-130* | | | | | | | | | | | 27 | | | |
| 90mm RL (Chicom Type 51, copy of US 3.5") | | | | | | | | | | | | | | | |
| 57mm RR (Chicom Type 36, copy of US) | 18-30* | | | | | | | | | | | 6 | | | |
| 75mm RR (Chicom Type 52, copy of US) | 18-30* | | | | | | | | | | | 6 | | | |
| ANTI-AIRCRAFT ARTILLERY | | | | | | | | | | | | | | | |
| 14.5mm HMG (Soviet ZPU-4) | X | | | X | | | | | | | | | | | |
| 37mm AA Gun (Soviet M-1939/Chicom Type 55) | 16 | | | 16 | | | | | | | | | | | |
| 57mm AA Gun (Soviet S-60) | | | | | | | | | | | | | | | |
| 85mm AA Gun (Soviet M-1939) | | | | | | | | | | | | | | | |
| *88mm Gun (German M-18, M-36, M-37) | | | | | | | | | | | | | | | |
| 100mm AA Gun (Soviet KS-19) | | | | | | | | | | | | | | | |
| VEHICLES | | | | | | | | | | | | | | | |
| GAZ 51 (4 x 2) | | | 2 | | | 2 | | 2 | | | | 3 | | | |
| GAZ 63 (4 x 4) | | | 14 | | | 3 | 6 | | 30 | | | 5 | | | |
| GAZ 67B (4 x 4) | | | | | | | | | | | | | | | |
| GAZ 69 (4 x 4) | | | | | | | | | | | | | | | |
| GAZ 46 (4 x 4) (Amphibious) | | | | | | | | | | | | | | | |
| ZIL 150 (4 x 2) | | | | | | | | | | | | | | | |
| ZIL 164 (4 x 2) | | | | | | | | | | | | | | | |
| ZIL 151 (6 x 6) | | | | | | | | | | | | | | | |
| ZIL 157 (8 x 6) | | | | | | | | | | | | | | | |
| ZIL 485 (6 x 6) (Amphibious) | | | | | | | | | | | | | | | |
| Motorcycle (2 Wheel) | | | | | | | | | | | | | | | |
| Motorcycle (3 Wheel) | | | | | | | | | | | | | | | |
| Ambulance | | | | | | | | | | | | | | | |
| ARMORED VEHICLES | | | | | | | | | | | | | | | |
| BTR-40 Armored Personnel Carrier | | | | | | | | | | | | | | | |
| SU-76 Support Gun (76mm) | | | | | | | | | | | | | | | |
| PT-76 Amphibious Tank | | | | | | | | | | | | | | | |
| T-34 Tank (85mm) | | | | | | | | | | | | | | | |
| SIGNAL | | | | | | | | | | | | | | | |
| 702 Handi-Talkie | | | | | | | | | | | | | | | |
| 719 Walkie-Talkie | | | | | | | | | | | | | | | |
| 102E (Radio) | | | | | | | | | | | | | | | |
| 103 (Radio) | | | | | | | | | | | | | | | |
| Radar (Fire Control) | | | | | | | | | | | | | | | |
| Radar (EW/GCI) | | | | | | | | | | | | | | | |
| Radar (Height Finder) | | | | | | | | | | | | | | | |

LEGEND: - Obsolete
X - Equipment types interchangeable and/or mixed

SECRET

SECRET

SECRET

| EQUIPMENT SUMMARY | | ARMORED REGT | | ARMORED Bn | Amph Tk Bn | ARTY DIV | | Hq Co, Arty Div | Sig Co, Arty Div | Guard Co, Arty Div | ARTY REGT, ARTY DIV | Hq Co, Arty Regt | ARTY BN, ARTY REGT | AAA DIV | Hq Co, AAA DIV | Sig Co, AAA Div | Recon Co, AAA Div | Guard Co, AAA Div | AAA REGT, AAA DIV | AAA BN, (WGS) AAA | AAA BN, (Lt) AAA D | TRANS GP | Scty Bn (Coastal) | Scty Bn (Frontier) | Scty Bn (APSF) | ENGR REGT | Engr Bn |
|---|--|--------------|------|------------|------------|----------|------|-----------------|------------------|--------------------|---------------------|------------------|--------------------|---------|----------------|-----------------|-------------------|-------------------|-------------------|-------------------|--------------------|----------|-------------------|--------------------|----------------|-----------|---------|
| | | (44) | (45) | (46) | (47) | (48) | (49) | (50) | (51) | (52) | (53) | (54) | (55) | (56) | (57) | (58) | (59) | (60) | (61) | (62) | (63) | (64) | (65) | (66) | (67) | | |
| PERSONNEL | | | | | | | | | | | | | | | | | | | | | | | | | | | |
| Officers: | | 75 | 21 | 21 | 350 | | | | 104 | | | | | 400 | | | | | 50 | 20 | 20 | 30 | 88 | 34 | 34 | 87 | 25 |
| Enlisted: | | 925 | 250 | 250 | 4,150 | | | | 1,096 | | | | | 5,100 | | | | | 850 | 380 | 405 | 420 | 562 | 466 | 466 | 1,663 | 475 |
| TOTAL: | | 1,000 | 271 | 271 | 4,500 | | | | 1,200 | | | | | 5,500 | | | | | 900 | 400 | 425 | 450 | 600 | 500 | 500 | 1,750 | 500 |
| SMALL ARMS | | | | | | | | | | | | | | | | | | | | | | | | | | | |
| 7.62mm Pistol (Soviet M-1933/Chicom Type 51) | | | | | | | | | | | | | | | | | | | | | | | | | | | |
| 7.62mm Carbine (Soviet SKS/Chicom Type 56) | | | | | | | | | | | | | | | | | | | | | | | | | | | |
| 7.62mm Assault Rifle (Soviet AK-47/Chicom Type 56) | | | | | | | | | | | | | | | | | | | | | | | | | | | |
| 7.62mm SMG (Soviet PPSH-41/Chicom Type 50) | | | | | | | | | | | | | | | | | | | | | | | | | | | |
| 7.62mm LMG (Soviet RPD/Chicom Type 56) | | | | | | | | | | | | | | | | | | | | | | | | | | | |
| 7.62mm HMG (Soviet SG-43 Goryunov/Chicom Type 53) | | | | | | | | | | | | | | | | | | | | | | | | | | | |
| 12.7mm HMG (Soviet DShK/Chicom Type 54) | | | | | | | | | | | | | | | | | | | | | | | | | | | |
| MORTARS | | | | | | | | | | | | | | | | | | | | | | | | | | | |
| 60mm Mort (Chicom Type 31) | | | | | | | | | | | | | | | | | | | | | | | | | | | |
| 82mm Mort (Soviet M-1937/Chicom copy) | | | | | | | | | | | | | | | | | | | | | | | | | | | |
| 120mm Mort (Soviet M-1943/Chicom copy) | | | | | | | | | | | | | | | | | | | | | | | | | | | |
| ARTILLERY | | | | | | | | | | | | | | | | | | | | | | | | | | | |
| 57mm Gun (Soviet M-1943/Chicom Type 55) | | | | | | | | | | | | | | | | | | | | | | | | | | | |
| 75mm Gun (German PAK-40) | | | | | | | | | | | | | | | | | | | | | | | | | | | |
| 75mm How (US M1A1) | | | | | | | | | | | | | | | | | | | | | | | | | | | |
| 76.2mm Gun (Soviet M-1942/Chicom Type 54) | | | | | | | | | | | | | | | | | | | | | | | | | | | |
| 85mm Field Gun (Soviet D-44/Chicom copy) | | | | | | | | | | | | | | | | | | | | | | | | | | | |
| 105mm How (US M2) | | | | | | | | | | | | | | | | | | | | | | | | | | | |
| 122mm How (Soviet M-1938/Chicom copy) | | | | | | | | | | | | | | | | | | | | | | | | | | | |
| 122mm Gun (Soviet M-31/37) or 152mm Gun (Soviet M-1937 (ML 20) POSSIBLE)) | | | | | | | | | | | | | | | | | | | | | | | | | | | |
| RECOILLESS | | | | | | | | | | | | | | | | | | | | | | | | | | | |
| RPG-2 RL (AT) (Soviet RPG-2/Chicom copy) | | | | | | | | | | | | | | | | | | | | | | | | | | | |
| 90mm RL (Chicom Type 51, copy of US 3.5") | | | | | | | | | | | | | | | | | | | | | | | | | | | |
| 57mm RR (Chicom Type 36, copy of US) | | | | | | | | | | | | | | | | | | | | | | | | | | | |
| 75mm RR (Chicom Type 52, copy of US) | | | | | | | | | | | | | | | | | | | | | | | | | | | |
| ANTI-AIRCRAFT ARTILLERY | | | | | | | | | | | | | | | | | | | | | | | | | | | |
| 14.5mm HMG (Soviet ZPU-4) | | | | | | | | | | | | | | | | | | | | | | | | | | | |
| 37mm AA Gun (Soviet M-1939/Chicom Type 55) | | | | | | | | | | | | | | | | | | | | | | | | | | | |
| 57mm AA Gun (Soviet S-60) | | | | | | | | | | | | | | | | | | | | | | | | | | | |
| 85mm AA Gun (Soviet M-1939) | | | | | | | | | | | | | | | | | | | | | | | | | | | |
| 88mm Gun (German M-18, M-36, M-37) | | | | | | | | | | | | | | | | | | | | | | | | | | | |
| 100mm AA Gun (Soviet KS-19) | | | | | | | | | | | | | | | | | | | | | | | | | | | |
| VEHICLES | | | | | | | | | | | | | | | | | | | | | | | | | | | |
| GAZ 51 (4 x 2) | | | | | | | | | | | | | | | | | | | | | | | | | | | |
| GAZ 63 (4 x 4) | | | | | | | | | | | | | | | | | | | | | | | | | | | |
| GAZ 67B (4 x 4) | | | | | | | | | | | | | | | | | | | | | | | | | | | |
| GAZ 69 (4 x 4) | | | | | | | | | | | | | | | | | | | | | | | | | | | |
| GAZ 46 (4 x 4)(Amphibious) | | | | | | | | | | | | | | | | | | | | | | | | | | | |
| ZIL 150 (4 x 2) | | | | | | | | | | | | | | | | | | | | | | | | | | | |
| ZIL 164 (4 x 2) | | | | | | | | | | | | | | | | | | | | | | | | | | | |
| ZIL 151 (6 x 6) | | | | | | | | | | | | | | | | | | | | | | | | | | | |
| ZIL 157 (6 x 6) | | | | | | | | | | | | | | | | | | | | | | | | | | | |
| ZIL 485 (6 x 6)(Amphibious) | | | | | | | | | | | | | | | | | | | | | | | | | | | |
| Motorcycle (2 Wheel) | | | | | | | | | | | | | | | | | | | | | | | | | | | |
| Motorcycle (3 Wheel) | | | | | | | | | | | | | | | | | | | | | | | | | | | |
| Ambulance | | | | | | | | | | | | | | | | | | | | | | | | | | | |
| ARMORED VEHICLES | | | | | | | | | | | | | | | | | | | | | | | | | | | |
| BTR-40 Armored Personnel Carrier | | | | | | | | | | | | | | | | | | | | | | | | | | | |
| SU-76 Support Gun (76mm) | | | | | | | | | | | | | | | | | | | | | | | | | | | |
| PT-76 Amphibious Tank | | | | | | | | | | | | | | | | | | | | | | | | | | | |
| T-34 Tank (85mm) | | | | | | | | | | | | | | | | | | | | | | | | | | | |
| SIGNAL | | | | | | | | | | | | | | | | | | | | | | | | | | | |
| 702 Handi-Talkie | | | | | | | | | | | | | | | | | | | | | | | | | | | |
| 718 Walkie-Talkie | | | | | | | | | | | | | | | | | | | | | | | | | | | |
| 102E (Radio) | | | | | | | | | | | | | | | | | | | | | | | | | | | |
| 103 (Radio) | | | | | | | | | | | | | | | | | | | | | | | | | | | |
| Radar (Fire Control) | | | | | | | | | | | | | | | | | | | | | | | | | | | |
| Radar (EW/GCI) | | | | | | | | | | | | | | | | | | | | | | | | | | | |
| Radar (Height Finder) | | | | | | | | | | | | | | | | | | | | | | | | | | | |

LEGEND: * - Obsolete
X - Equipment types interchangeable and/or mixed

SECRET

SECRET

SECRET