

SECRET

HEADQUARTERS
Marine Aircraft Group 36
1st Marine Aircraft Wing FMFPac
FPO San Francisco 96602

REG # 6333

Copy 1 of 7 copies
30:SRS:ojr
5750
0030A28866
15 October 1966

SECRET

From: Commanding Officer
To: Commanding General, 1st Marine Aircraft Wing (Attn: ACofS, G-3)
Subj: Command Chronology (U)

Ref: (a) WgO 5750.1B

Encl: ✓(1) Part One - Organizational Data
 ✓(2) Part Two - Narrative Summary
 ✓(3) Part Three - Significant Events
 ✓(4) Part Four - Supporting Documents

1. In accordance with reference (a), enclosure (1) through (4) are submitted for the month of September 1966.

Victor A. Armstrong
VICTOR A. ARMSTRONG

Copy to:
CG, 1st MAW (Copy 1 of 7 plus enclosures)
CG, 1st MAW (Copies 2 thru 5 less enclosure (4))
File (Copy 6 less enclosure (4))
S&C (Copy 7 of 7 less enclosure (4))

DOWNGRADED AT 3 YEAR INTERVALS
DECLASSIFIED AFTER 12 YEARS
DOD DIR 5200.10

SECRET

SECRET

SECRET

5750

15 October 1966

b. Commanders and Staff of attached units:

H&MS-36

CO	MOONEY, T. G. CARLSON, W. C.	LTCOL(1-5Sep) LTCOL(6-30Sep)
XO	BONNEY, R. A.	MAJOR
MAINT O	CHRISTIE, C. O. BOUDREAUX, JR. S. J.	MAJOR(1-8Sep) CAPT(9-30Sep)

MABS-36

CO	CARLSON, W. C. NELSON, J. A.	LTCOL(1-5Sep) LTCOL(6-30Sep)
XO	BUCKNER II, G. H.	MAJOR
OPS	PETTIGREW, W. M. KIRKPATRICK, S. A.	CAPT(1-18Sep) 1STLT(19-30Sep)

HMM-361

CO	TWEED, M. D.	LTCOL
XO	KUCI, R. A.	MAJOR
OPS	VANEK, R. A.	MAJOR

HMM-362

CO	ARMSTRONG, M. B.	MAJOR
XO	DUVALL, R. L. BRAY, R. P.	MAJOR(1-15Sep) MAJOR(16-28Sep)
OPS	BRAY, R. P. LEWIS, H.	MAJOR(1-15Sep) MAJOR(16-28Sep)

HMM-363

CO	MC GOUGH, J. D.	COL
XO	VOBORA, G. J.	MAJOR(1-27Sep)
FROM THE PERIOD 28 SEP TO 30 SEP NO XO ASSIGNED.		
OPS	GRAHAM, W. H. OWLETT, F.	MAJOR(1-27Sep) CAPT(28-30Sep)

SECRET

5750
15 October 1966

PART I

1. Organizational Data Period 1 to 30 September 1966

a. Commanding Officer and Staff of MAG-36

CO	ARMSTRONG, V. A.	COL
XO	COSTELLO, K. W. PHILLIPS, A. L.	LTCOL(1-10Sep) LTCOL(11-30Sep)
ADJ	TUTTEROW, H. W.	CAPT
S-1	CHAMBERS, D. L.	CAPT
S-2	PRESSON, R. E. GLAZER, A. A.	MAJ(1-10Sep) MAJ(11-30Sep)
S-3	ZITNIK, R. J. SLATON, C. H.	LTCOL(1-13Sep) LTCOL(14-30Sep)
S-4	GARRATTO, A. F.	LTCOL
Flt. Surgeon	SCHENK, T. PATTERSON, J. H.	LT(USN)(1-10Sep) LT(USN)(11-30Sep)
MTO	MOFFETT, F. L.	CAPT
EMB	PARKER, G. R. SELLARS, J. A.	2NDLT(1-16Sep) 2NDLT(17-30Sep)
ORD	PARKER, G. R. SELLARS, J. A.	2NDLT(1-16Sep) 2NDLT(17-30Sep)
Maintenance	CHRISTIE, C. O.	MAJ(1-8Sep)
Communications	BOUDREAUX, S. J. MEEKS, C. I. TAYLOR, C. W.	CAPT(9-30Sep) CAPT(1-7Sep) CAPT(8-30Sep)
Civil Affairs	GONZALES, C. E.	CAPT
Avn Safety	BONNEY, R. A.	MAJ
NATOPS	PURCELL, R. D.	MAJ
Legal	None	
Security	GONZALES, C. E.	CAPT

SECRET

5750
15 October 1966

HMM-364

CO	SOMMERVILLE, D. A.	LTCOL
XO	NEEDHAM, M. J.	MAJOR
OPS	RIORDAN, C. D.	CAPT

HMM-165

CO	ELDRIDGE, JR. W.W.	LTCOL
XO	BRADLEY, W. C.	MAJOR
OPS	READ, W. T.	CAPT

VMO-6

CO	MALONEY, W. R.	MAJOR
XO	GREFORY, R. M.	MAJOR
OPS	DODDS, W. E.	MAJOR

2. Task Organization and Unit Location:

UNIT DESIGNATION	LOCATION	DATE
H&MS-36	KY HA	1-30 September 1966
MABS-36	KY HA	1-30 September 1966
HMM-361	KY HA	1-30 September 1966
HMM-362	KY HA	1-28 September 1966
HMM-363	U.S.S. IWO JIMA	1-28 September 1966
	KY HA	28-30 September 1966
HMM-364	KY HA	1-30 September 1966
HMM-165	MCAF SANTA ANA, CALIF.	1-6 September 1966
	U.S.S. VALLEY FORGE	7-30 September 1966
VMO-6	KY HA	1-30 September 1966

SECRET

5750

15 October 1966

3. Average monthly strength: September 1966

UNIT	Mar. Off.	Mar. Enl.	Navy Off.	Navy Enl.
MAG-36	325	1525	7	28
H&MS-36	48	260	0	0
MABS-36	14	464	4	25
HMM-361	40	139	0	0
HMM-362	51	159	1	0
HMM-363	50	158	1	3
HMM-364	33	58	0	0
HMM-165	56	199	0	0
VMO-6	33	88	1	0

SECRET

5750
15 October 1966

PART II

1. Narrative summary.

a. MAG-36 continued to support the 1st and 3rd Marine Divisions, the Republic of Korea Marine Corps Brigade, and the Vietnamese I Corps Forces throughout the month of September. The helicopter capabilities were exploited in a wide range of missions including large tactical troop lifts, tactical medical evacuations, insertions and retraction of Reconnaissance teams into and from isolated and unsecure zones, and logistic resupply lifts into established outposts.

b. There were no incidents involving tactical recovery of downed aircraft.

c. The "Sparrow Hawk" 15 minute alert stand-by was utilized three times. Twice Korean Marines were lifted into strike zones in support of other Korean Marine Corps troops. On the third launch, U. S. Marines were lifted to the site of a jet aircraft crash to provide security while the wreckage was being inspected.

d. Operation El Paso commenced on 5 September. On 6 September the operation was continued under the code name of NAPA. The operation was conducted in the area west of Tam Ky and lasted until 15 September. The operation was conducted by elements of the 5th Marine Regiment and 1st Reconnaissance Battalion. Initial helicopter support consisted of company size troop lifts, area recon flights and reconnaissance team insertions. Thereafter helicopter support largely consisted of direct support missions such as company resupply and med-evac lifts.

e. Operation Fresno was conducted from 8 through 16 September by elements of the 7th Marine Regiment and 1st Reconnaissance Battalion. The operation took place in the Mo Duc area, approximately 30 to 35 miles south of Chu Lai. Helicopter support was mainly company resupply and med-evac lifts, while operating out of the logistic support area LSA at Quang Ngai Airfield. Company size troops lifts and the insertion and retraction of Reconnaissance teams were conducted throughout the operation.

f. As operation Fresno ceased, Operation Golden Fleece commenced in the same area. This operation ran from 17 through 26 September, with the purpose of preventing the Viet Cong from molesting the Vietnamese rice harvest. Helicopter support was again characterized by logistic resupply, med-evac, and tactical air control (airborne) missions. Also extensive use was made of the command and control helicopters.

SECRET

5750

15 October 1966

g. Operation Monterey commenced on 29 September, with MAG-36 providing TAC(A), command and control, logistic and med-evac support. The operation terminated on 30 September, with no significant occurrences.

h. On 17 September MAG-36 provided tactical Air control (airborne) support for operation DeckHouse IV.

5750
15 October 1966

PART III

1. Significant events:

- a. On four September, the CG FMFPac toured the Chu Lai complex.
- b. Helicopter support was provided to the ARVN forces at Kham Duc for approximately one week. The helicopters participated in the insertion and retraction of reconnaissance teams and one tactical troop lift involving the Republic of Viet Nam forces.
- c. On 11 September MAG-36 provided support for National Election Reaction Force Missions. All went well on election day and the reaction force was not needed.

SECRET

PART IV

Table of Contents

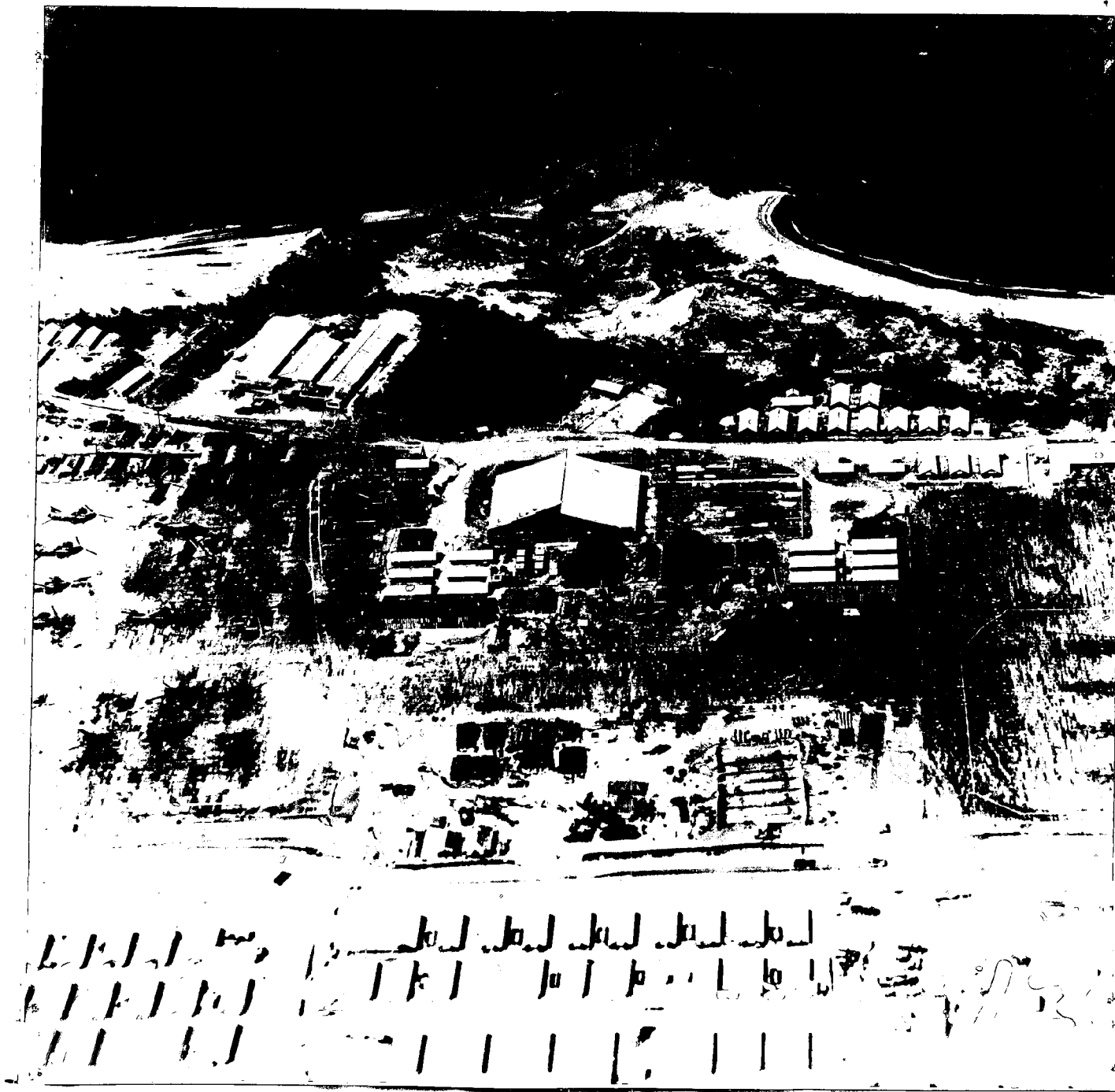
✓ ANNEX A -	H&MS-36 Command Chronology	} Filed
✓ ANNEX B -	MABS-36 Command Chronology	
✓ ANNEX C -	HMM-361 Command Chronology	
✓ ANNEX D -	HMM-363 Command Chronology	
✓ ANNEX E -	HMM-364 Command Chronology	
✓ ANNEX F -	VMO-6 Command Chronology	} Sep
✓ ANNEX G -	HMM-165 Command Chronology	
✓ ANNEX H -	Photo of Center Taxiway, MCAF Ky Ha, RVN	
✓ ANNEX I -	Photo of North Mat Extension showing Construction, MCAF Ky Ha, RVN	
✓ ANNEX J -	Photo looking SE, MCAF Ky Ha, RVN	
✓ ANNEX K -	Photo looking East, MCAF Ky Ha, RVN	
✓ ANNEX L -	Photo of North Mat, MCAF Ky Ha, RVN	

Enclosure (4)
SECRET

SECRET

ANNEX H to Part IV

1. Attached Photo of Center Taxiway, MCAF Ky Ha, RVN



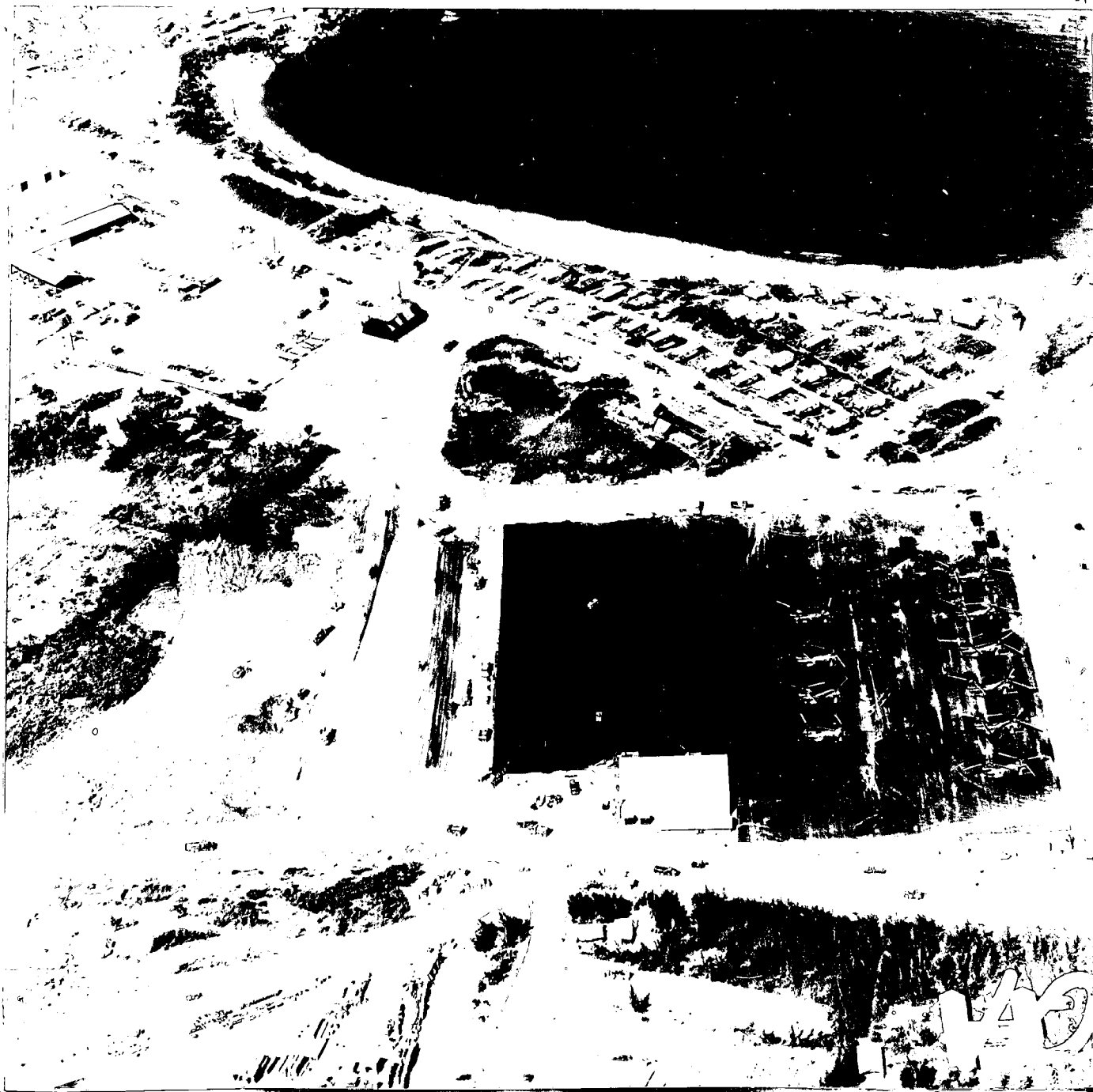
H-1

Enclosure (4)
SECRET

SECRET

ANNEX I to Part IV

1. Attached Photo of North Mat extension showing construction, MCAF Ky Ha, RVN.



I-1

Enclosure (4)
SECRET

SECRET

ANNEX J to Part IV

1. Attached Photo looking SE, MCAF Ky Ha, RVN.



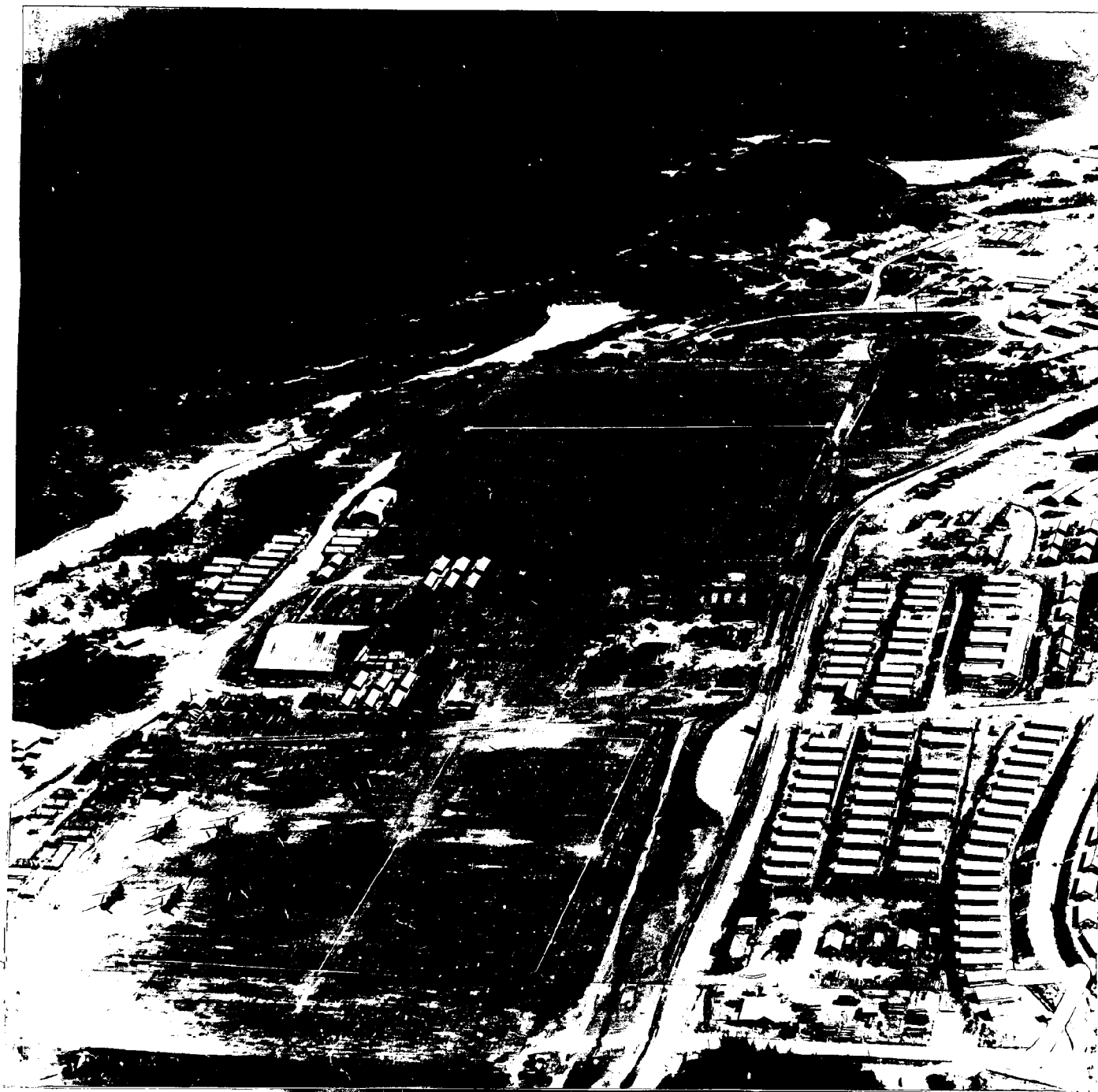
J-1

Enclosure (4)
SECRET

SECRET

ANNEX K to Part IV

1. Attached Photo, looking East, MCAF Ky Ha, RVN.



K-1

Enclosure (4)
SECRET

SECRET

ANNEX L to Part IV

SECRET Attached Photo of North Mat, MCAF Ky Ha, RVN.



L-1

Enclosure

SECRET

SECRET