

SECRET

HEADQUARTERS  
Marine Aircraft Group 36  
1st Marine Aircraft Wing FMFPac  
FPO San Francisco 96602

Copy 1 of 2 copies  
30:SK3:WLn  
5750  
C30A31966  
15 November 1966

SECRET

From: Commanding Officer  
To: Commanding General, 1st Marine Aircraft Wing (Attn: ACoS, G-3)

Subj: Command Chronology (U)

Ref: (a) Wing Order 5750.1B

Encl: ✓(1) Part One - Organizational Data  
✓(2) Part Two - Narrative Summary  
✓(3) Part Three - Significant Events  
✓(4) Part Four - Supporting Documents

1. In accordance with reference (a), enclosures (1) through (4) are submitted for the month of October 1966.

*Victor A. Armstrong*  
VICTOR A. ARMSTRONG

Copy to:  
CG, 1st MAW (Copy 1 of 7 plus enclosures)  
CG, 1st MAW (Copies 2 thru 5 less enclosure (4))  
File (Copy 6 less enclosure (4))  
S & C (Copy 7 of 7 less enclosure (4))

DOWNGRADE AT 3 YEAR INTERVALS  
DECLASSIFIED AFTER 12 YEARS  
DOD DIR 5200.10

SECRET

SECRET

MAW-36

Cmnd Chron

Oct 1966

SECRET

5750

15 November 1966

## b. Commanders and Staff of attached units:

## H&amp;MS-36

CO	CARLSON, W. C.	LTCOL
XO	BONNEY, R. A.	MAJ
MAINT O	BOUDREAUX, S. J.	CAPT

## MABS-36

CO	NELSON, J. A.	LTCOL
XO	FISH, T. E.	MAJ
OPS	KIRKPATRICK, S. A. KERWIN, F. J.	1STLT (1-9Oct) CAPT (10-31Oct)

## HMM-361

CO	TWEED, M. D.	LTCOL
XO	KUCI, R. A.	MAJ
OPS	VANER, K. S.	MAJ

## HMM-363

CO	McGOUGH, J. D. HUNTINGTON, K. E.	COL (1-5Oct) LTCOL (6-31Oct)
XO	DAY, M. E.	MAJ((6-31Oct)
OPS	OWLETT, F. ECKMANN, R. P.	MAJ (1-5Oct) MAJ (6-31Oct)

## HMM-165

CO	ELDRIDGE, W. W. JR.	LTCOL
XO	BRADLEY, W. C.	MAJ
OPS	READ, W. T.	MAJ

SECRET

5780  
15 November 1966

## PART I

## 1. Organizational Data Period 1 to 31 October 1966

## a. Commanding Officer and Staff of MAG-36

CC	ARMSTRONG, V. A.	COL
XO	PHILLIPS, A. L.	LTCOL
ADJ	TUTTEROW, H. W.	CAPT
S-1	CHAMBERS, D. L.	CAPT
S-2	SMITH, L. W.	MAJ
S-3	SLATON, C. H.	LTCOL
S-4	GARRATTO, A. F.	LTCOL
Flt. Surgeon	PATTERSON, J. H.	LT(USN)
MTG. OFF.	MOFFETT, F. L.	CAPT (1-4 Oct)
	BURGESS, J. J.	CAPT (5-31 Oct)
EMB	SELLARS, J. A.	2NDDT
ORD	SELLARS, J. A.	2NDLT
Maintenance	BOUDREAUX, S. J.	CAPT
Communications	TAYLOR, C. W.	MAJ
Civil Affairs	DAY, D. L.	1STLT
Avn Safety	BONNEY, R. A.	MAJ
NATOPS	GREGORY, R. M.	MAJ
Legal	None	
Security	SMITH, L. W.	MAJ

SECRET

5750  
15 November 1966

## VMO-6

CO	MALONEY, W. R.	MAJ
XO	GREGORY, R. M.	MAJ (1-19Oct)
	DODDS, W. E.	MAJ (20-31Oct)
OPS	DODDS, W. E.	MAJ (1-19Oct)
	HENDRIX, C. E.	MAJ (20-31Oct)

## 2. Task Organization and Unit Locations:

UNIT DESIGNATION	LOCATION	DATE
H&MS-36	KY HA	1-31 October 1966
MABS-36	KY HA+	1-31 October 1966
HMM-361	KY HA	1-31 October 1966
HMM-363	KY HA	1-31 October 1966
HMM-165	KY HA	1-31 October 1966
VMO-6	KY HA	1-31 October 1966

## 3. Average monthly strength: October 1966

UNIT	Mar. Off.	Mar. Enl.	Navy Off.	Navy Enl.
MAG-36	223	1299	7	28
H&MS-36	40	271	0	0
MABS-36	13	468	5	28
HMM-361	35	120	0	0
HMM-363	44	150	1	0
HMM-165	57	183	0	0
VMO-6	34	107	1	0

SECRET

5750  
15 November 1966

## PART II

## 1. Narrative Summary

a. MAG-36 continued to fly missions in support of III Marine Amphibious Force, the Republic of Korea Marine Corps Brigade and the I Corps Forces of the Republic of Vietnam. The entire spectrum of helicopter support operations was provided. Included in this was large tactical lifts into hostile zones, insertion and extractions of reconnaissance teams into unsecure landing sites, medical evacuations, large logistic resupply lifts and recovery of downed aircraft from hostile areas.

b. There were three incidents involving the tactical recovery of a downed aircraft. All three aircraft were successfully recovered. On 10 October, one UH-1E made a forced landing at BT 240 215. The Sparrow Hawk helicopters dropped troops into the zone for security of downed aircraft. Later the same day the aircraft and troops were successfully extracted. On 11 October, one UH-1E was forced to land in an unsecure area because of control problems. Security troops and maintenance personnel were inserted around aircraft. The downed UH-1E was successfully flown out of the zone and the security troops and maintenance men were extracted. On 14 October, one UH-34D went down in an unsecure area while on an SAR mission. The crew and ordnance was recovered, but because of bad weather and darkness, an attempt to insert security troops and maintenance personnel was aborted. On 16 October another attempt at recovery was made. Troops and maintenance personnel were inserted, but only certain parts of the aircraft could be removed. On 26 October, 185 troops, an EOD team and a mech team were inserted and this time, with the help of an Army CH-54 "Flying Crane", the aircraft was successfully recovered.

c. The Sparrow Hawk 15 minutes alert stand-by launched 5 times. On 9 October the Sparrow Hawk was launched in order to take emergency reinforcements to the Korean Marines Forces. On 10 October the Sparrow Hawk was launched to provide security troops for an aircraft down in hostile territory. Again on 11 October the Sparrow Hawk was utilized to carry security troops and maintenance personnel to the site of another downed aircraft. Ground fire was received and one Sparrow Hawk aircraft was hit, but mission was concluded successfully. On 14 October the Sparrow Hawk was launched once again to provide security troops for still another downed aircraft. After arriving over drop zone, the mission was aborted because of darkness and weather. The last Sparrow Hawk of the month occurred on 19 October. Troops of the 1st Battalion, 11th Marines were inserted to inspect a ship which had been burned on the beach. The mission was successfully completed four hours after it started.

d. On 7 October, MAG-36 flew logistic support for Korean Marine Forces conducting Operation Lee.

SECRET

5750

15 November 1966

e. From 17 October to 21 October MAG-36 furnished continuous helicopter support to the U. S. Marines and ARVN Forces conducting Operation Prairie. Operation Prairie is a large continuous operation being conducted in the Northern most Quang Tri Province in the vicinity of the Demilitarized Zone. Helicopter support from MAG-36 consisted chiefly of large troop lifts and large logistic resupply missions to troops in the field.

f. Operation Dover was conducted from 26 October through 29 October in an area approximately 12 miles Northwest of Chu Lai. Initial helicopter support consisted of Battalion size troop lifts into the operation area. MAG-36 supplied logistic, med evac, TAC(A), and command control support for the remainder of the operation. Upon termination of the operation, the 1st Battalion, 5th Marines and I Corps ARVN Forces participating in the operation were Heli-lifted back to their respective base areas.

**SECRET**

5750

15 November 1966

**PART III****1. Significant Events**

a. The Civil Affairs team and Med Cap team made visits to Ly Son (Cu Lao Re) Island on 6, 15, and 24 October. Conferences were held with the Island Officials and Elders. Soap and other health items were distributed. There were 225 Medical cases and 111 Dental cases handled during the month.

b. On 30 October, the CG, FMFPac, Lt Gen V. Krulak toured the Chu Lai complex, and presented the CNO Aviation Safety award to VMO-6.

SECRET

5750  
15 November 1966

## PART IV

## 1. Supporting Documents

- Filed* {  
*Adj* {  
*Filed* {  
*W* {  
*Cmd* {  
*Chm* {
- ✓ a. Command Chronology H3MS-36
  - ✓ b. Command Chronology MABS-36
  - ✓ c. Command Chronology HMM-362
  - ✓ d. Command Chronology HMM-363
  - ✓ e. Command Chronology HMM-165
  - ✓ f. Command Chronology VMO-6
  - ✓ g. Photograph Sand Ramp and Pier Construction
  - ✓ h. Photograph North Mat, Taxiway, Base Utilities Yard
  - ✓ i. Photograph North Mat Extension
  - ✓ j. Photograph South Mat and Taxiway
  - ✓ k. Photograph Main Camp Area, Taxiway and South Mat
  - ✓ l. Photograph Panoramic View



DECLASSIFIED

OCTOBER, 1966  
MCAF, KY HA. S. CAMP AREA SHOWING NEW PIER CONSTRUCTION AND  
STORAGE AREA. LOOKING NW.

SECRET



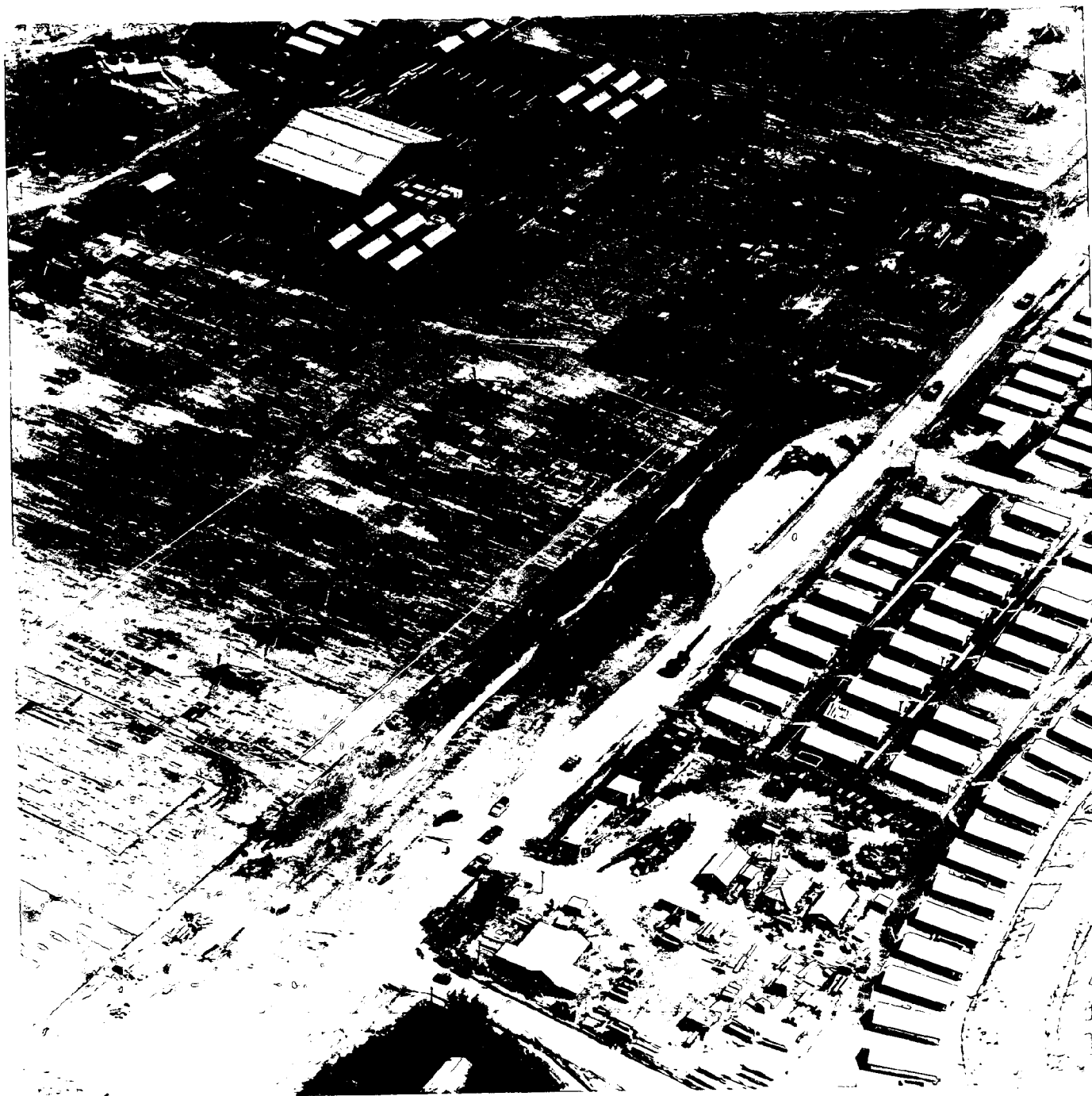
Tab G, Pt 4

SECRET

DECLASSIFIED

OCTOBER, 1966  
MCAF, KY HA. MO MAT, CENTER TAXI WAY AND BASE LITIES YARD,  
LOOKING EAST.

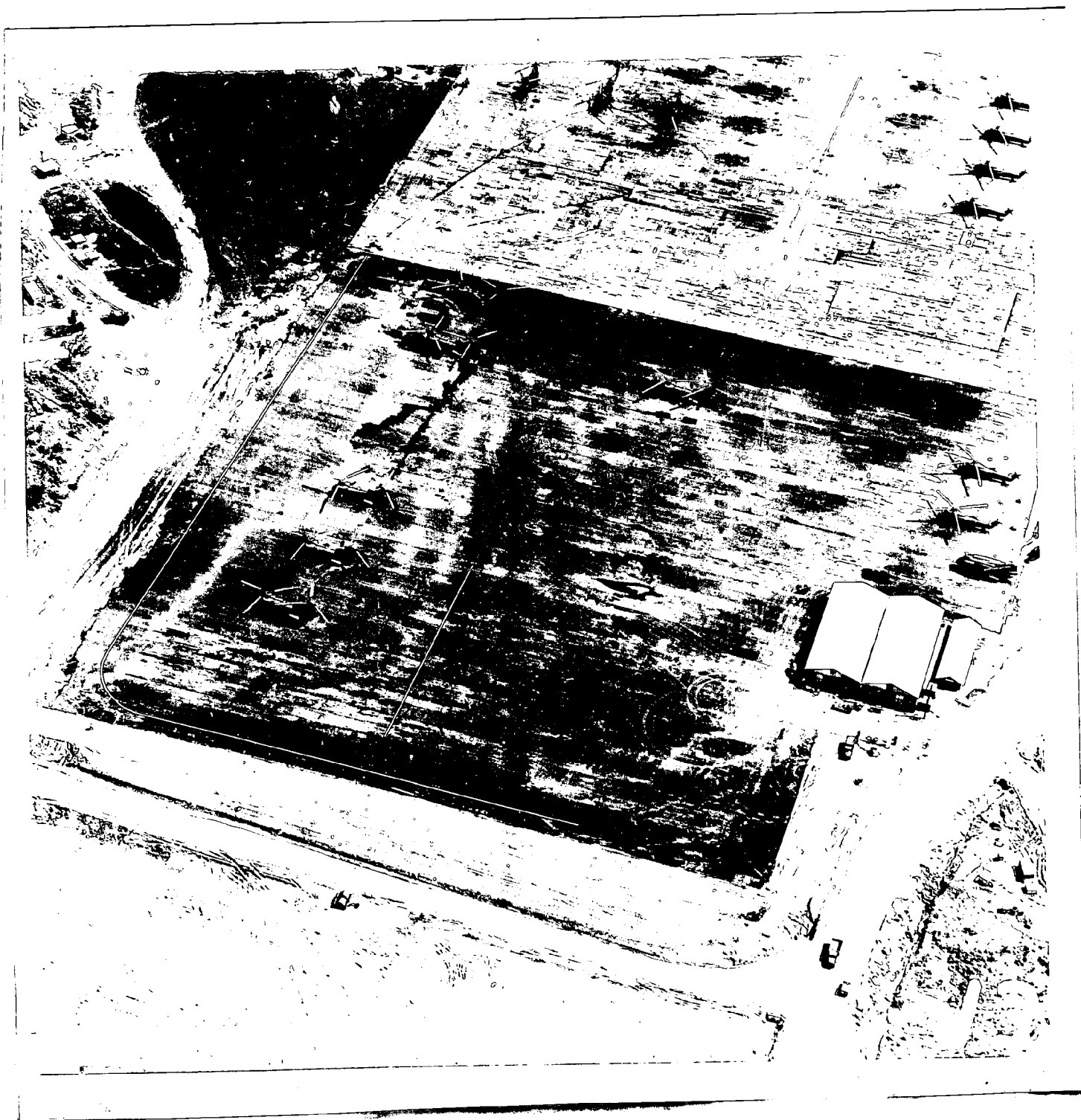
SECRET



Tab H, PL 4

MCAF, KY HA. NO. [REDACTED] AT EXTENSION LOOKING EAST.

SECRET



SECRET

*Tab i, Pl 4*

DECLASSIFIED

MCAF, KY HA. CEN TAXI WAY, SOUTH MAT LOOKING

SECRET

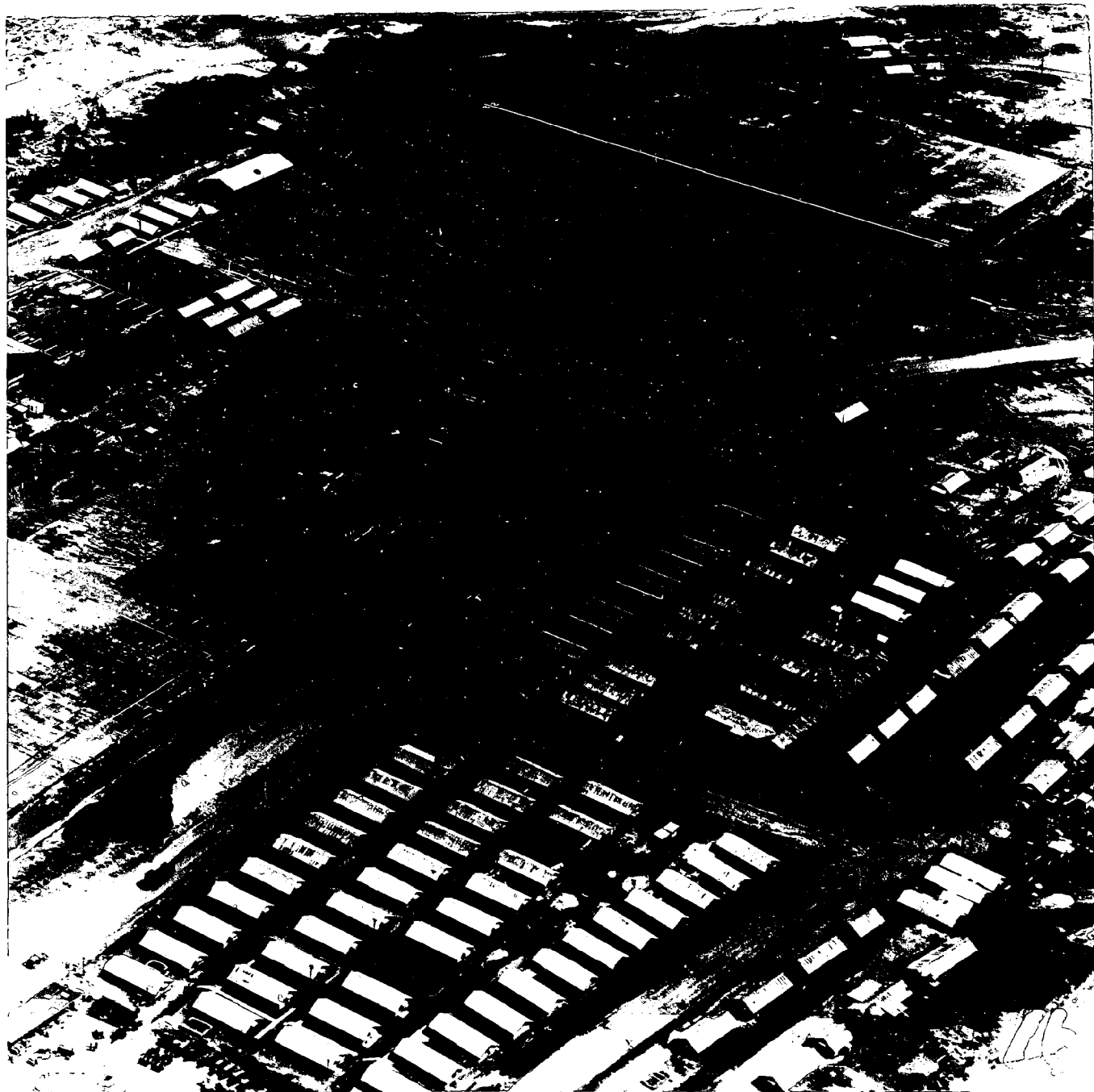


Tab J, Pt 4

DECLASSIFIED

OCTOBER, 1966  
MAIN CAMP AREA, CENTER TAXI WAY AND SOUTH MAT LOOKING SE.

SECRET



Tab K, P4

DECLASSIFIED

OCTOBER, 1966  
PANORAMIC VIEW OF CAF, KY HA LOOKING W. (ALIGN P. LE REGISTRATION MARKS)



(5 photos)  
PC 4, Tab 2

SECRET

DECLASSIFIED



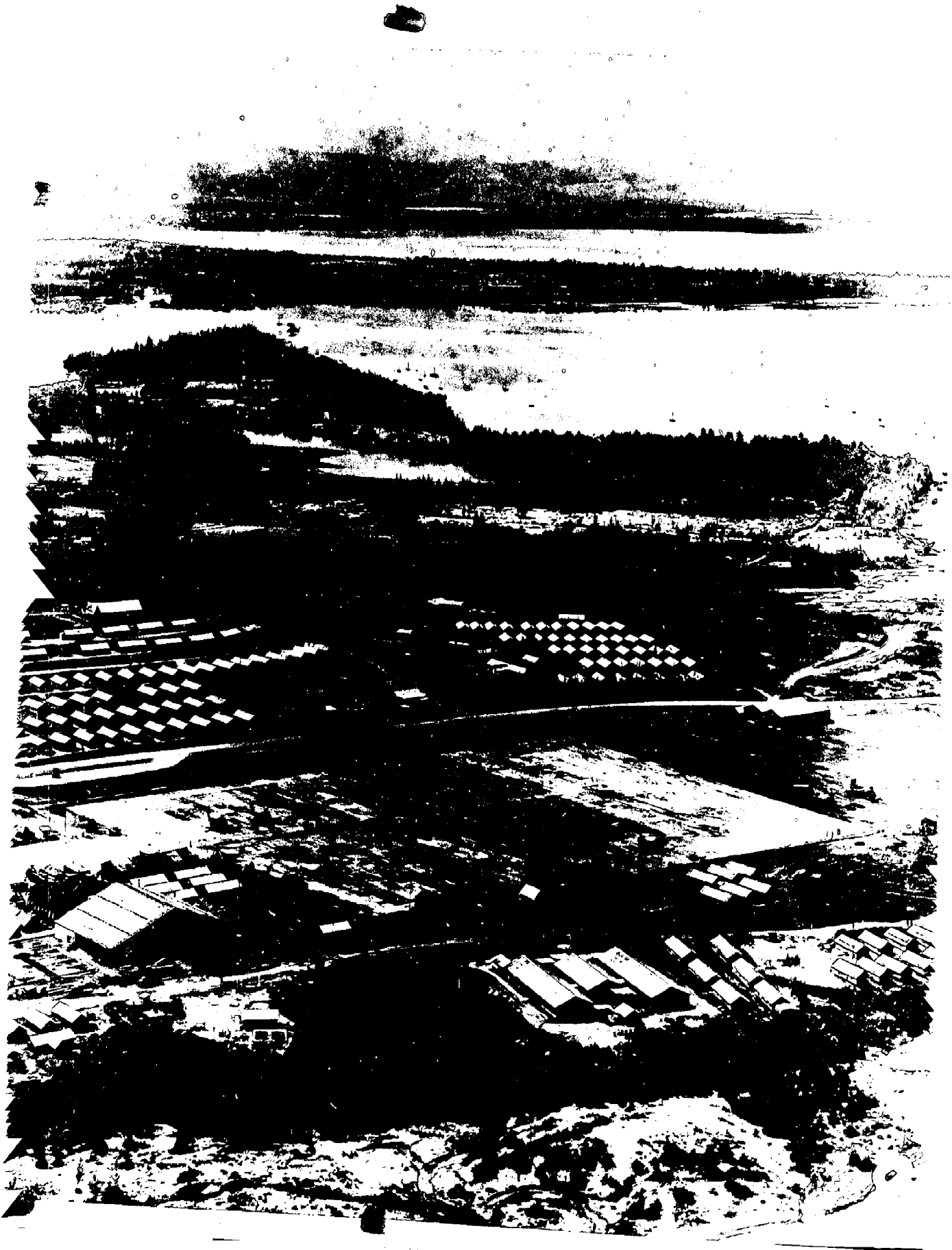
DECLASSIFIED



DECLASSIFIED

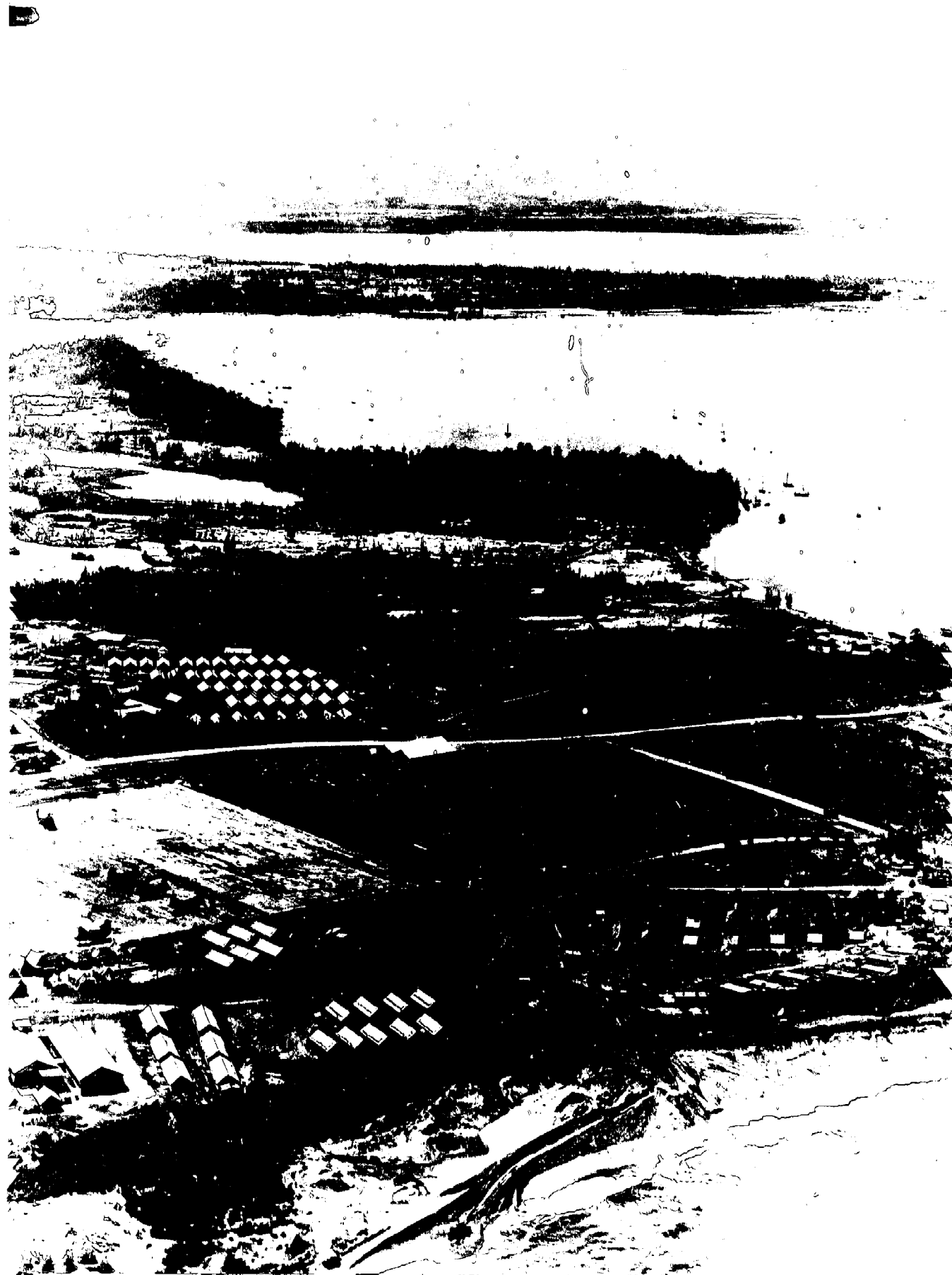


DECLASSIFIED



DECLASSIFIED

DECLASSIFIED



DECLASSIFIED