

A
POCKET
GUIDE
TO

O KINAWA

DoD PG-13
DA PAM 20-196
NAVFAC 10-02
AFP 34-123
NAVMC 2574





KINAWA

PUBLISHED BY ARMED FORCES INFORMATION
AND EDUCATION, DEPARTMENT OF DEFENSE

*DoD PG-13
DA PAM 20-196
NAVPERS 92822
AFP 34-3-23
NAVMC 2574



CONTENTS

	Page
Introduction.....	1
The Land.....	5
A Strategic Outpost.....	9
A Long, Checkered History.....	15
A Look at the Economy.....	23
A Democratic Government.....	34
Meet the People.....	47
Religious Faiths and Festivals.....	81
Pastimes—Familiar and Otherwise.....	94
Getting Around.....	106
In Conclusion.....	118
Appendix.....	120

*DoD Pam 2-50 has been renumbered as DoD PG-13; Service identification numbers are unchanged.

For sale by the Superintendent of Documents, U.S. Government Printing
Office, Washington, D.C., 20402 - Price 45 cents



INTRODUCTION

Your assignment to the Ryukyu (Rub-YOU-QUE) Islands—of which Okinawa is the largest—will place you in pleasant surroundings, face to face with people quite different from those back home. If you have not been in the Far East before, the sights you see and the people you meet will seem strange at first. But you will feel at home once you get acquainted with the Ryukyuan people and make friends with them.

It would be a mistake, in an essentially rural and village country such as the Ryukyus, to expect the dazzling attractions found in Tokyo, London, or Paris. But the Ryukyus have much to offer, not the least of which is the natural beauty of a varied landscape. And wherever you go, you will find the Ryukyuan people friendly and hospitable. These winning traits of the people have earned Okinawa such titles as "Land of Courtesy" and "Isle of Smiles." Even the most glum visitor will enjoy the good-natured smiles and laughter of the Okinawans.

Most Americans had never heard of the Ryukyus until Okinawa became the scene of the last battle of World War II in 1945. But American history was linked with Okinawa's almost a hundred years earlier by a distinguished American naval officer, Commodore Matthew C. Perry, who sailed into Naha harbor en route to Japan

on 26 May 1853. Although apprehensive of foreign visitors at the time, the Okinawans received Perry and his expedition with their usual courtesy. Perry, a man of remarkable vision, realized at once that Okinawa might be useful to the United States as an outpost. In the course of his visit he established a coaling depot and a cemetery for American citizens who died there.

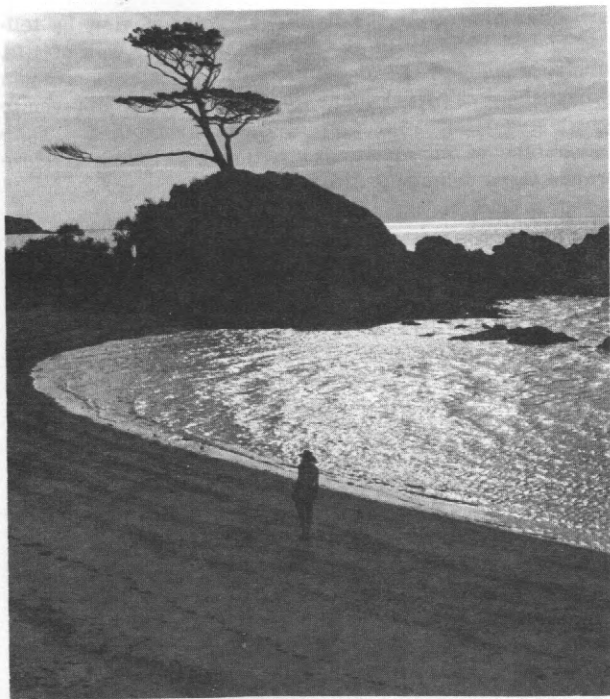
Anticipating by many years the technical aid programs now conducted by the U.S. Government, Commodore Perry presented to the Okinawans a butter churn and cotton gin, among other gifts, in the interest of their technological development. The Okinawans, according to a member of Perry's expedition, had no conceivable use for these articles, however, and were considerably mystified by them.

The picture today is quite different. Okinawans and Americans have grown very well acquainted since World War II. The democratic way of life being developed in the Ryukyus under American guidance is a source of American and Ryukyuan pride. Okinawa is the site of one of the most important United States military bases in the entire Pacific. For this and for other reasons it commands the attention of the world.

Because of the strategic importance of the Ryukyus, it is essential that you understand the islands' background and people and the political circumstances under which the United States retains control there. This guide will

help you appreciate the Ryukyuan point of view by telling you a little about the Ryukyans, their way of life, their problems, and their aspirations. The more you know about the Ryukyans, the more you will appreciate them and enjoy your tour of duty among them. Take advantage of an unusual opportunity to know at close range these delightful Asian people.





A tranquil vista of sea, sand, and sky.

THE LAND

The Ryukyu Islands are known by many names. The Chinese characters of the name are read by the Japanese as Ryukyu and by the Chinese as Liu Ch'iu. Among variant spellings by westerners are Loo Choo, Lewchew, and Luchu.

The Ryukyu archipelago extends in an arc along the coast of the Asian mainland between Japan on the north and Taiwan (Formosa) on the south. Of the 140-odd islands in the chain, only 48 are populated. About 850 square miles in area, the Ryukyus are smaller than the State of Rhode Island.

The islands are really peaks of submerged mountains, a few of them volcanic in origin and many of them, including Okinawa, fringed by coral reefs. Most of the islands are hilly, with a few fertile valleys.

The Ryukyus fall into four main groups of islands: (1) the Amami-Oshima group, closest to Japan in the north; (2) Okinawa and the small islands surrounding it; (3) the Miyako group; and (4) the Yaeyama group, nearest to Taiwan in the south. All of the Ryukyus except the Amami-Oshima group in the north are administered by the U.S. Civil Administration, Ryukyu Islands (USCAR).

Okinawa, the largest and most important of the Ryukyus, claims about half the total area of the Ryukyus chain. The island is 67 miles long and ranges from 2

to 16 miles in width. At some points you can see the China Sea on the west and the Pacific Ocean on the east. The northern two-thirds of Okinawa are rugged and mountainous; the southern third, of rolling hills, is broken by terraces, cliffs, and ravines.

A Warm, Humid Climate

Although the Ryukyus lie within the Temperate Zone, the Japan Current provides a rather warm climate similar to that of southern Florida. The average annual temperature is 72° F., but the thermometer may dip to the low 40's in winter and rise to about 90 in summer. The high humidity makes these moderate temperatures seem more extreme than they are, but fresh breezes keep the climate fairly agreeable the year round.

Okinawa has plenty of rain, especially in the summer months. The average annual rainfall is 82 inches. In spite of this, maintaining an adequate water supply is a serious and sometimes critical problem. Water runs off the land rapidly because of the nature of the soil, inadequate ground cover, and the small size of the island. There are few ponds of any size and few rivers of even limited importance. The Ryukyu Domestic Water Corporation expects soon to develop an adequate supply of water for the major municipalities of Okinawa by tapping underground resources, building storage reservoirs, and integrating distribution systems. Until this is ac-

complished, water shortages will occur. Everyone is expected to do his utmost to conserve what little there is.

As you would expect in a country as rainy as the Ryukyus, most days are overcast. A day is considered clear when the overcast is less than 20 percent. Cloudy days have their compensations, though—the cloud formations are often strikingly beautiful. Smog is practically unknown, probably because there is almost no smoke, either domestic or industrial.

The combination of warmth, dampness (the humidity averages 76 percent), and salty atmosphere from the surrounding waters presents many problems in daily living—for example, rust, mildew, mold, and just about every pest that bores, crawls, or flies. Automobiles must be washed, waxed, and polished frequently. Anything stored, even in heated closets, requires constant inspection. To combat destructive insects, periodic spraying by pest engineers must be supplemented.

The humidity, too, can cause heat rash. This is not only irritating but it also makes you more susceptible to various fungi and bacteria. Consequently, personal cleanliness and hygiene are even more important than at home, especially in summer. To avoid painful sunburn, don't overexpose yourself to the sun's rays.

Typhoons

Typhoons are an awesome feature of the Ryukyuan

climate. These severe windstorms, accompanied by torrential rain, resemble the hurricanes that visit the eastern and southern coasts of the United States. A typhoon can be compared to a gigantic doughnut, some hundreds of miles in diameter, moving slowly across the surface of the earth. Don't be deceived when the center, or eye, brings comparative calm for only one-half of the typhoon has passed and the other is on its way. Stay under shelter until the official "all clear" signal is given.

To give you some idea of the force of a typhoon, winds of up to 200 miles per hour and 17 inches of rain in a 24-hour period have been recorded. Typhoon winds can push a fence picket through a telephone pole.

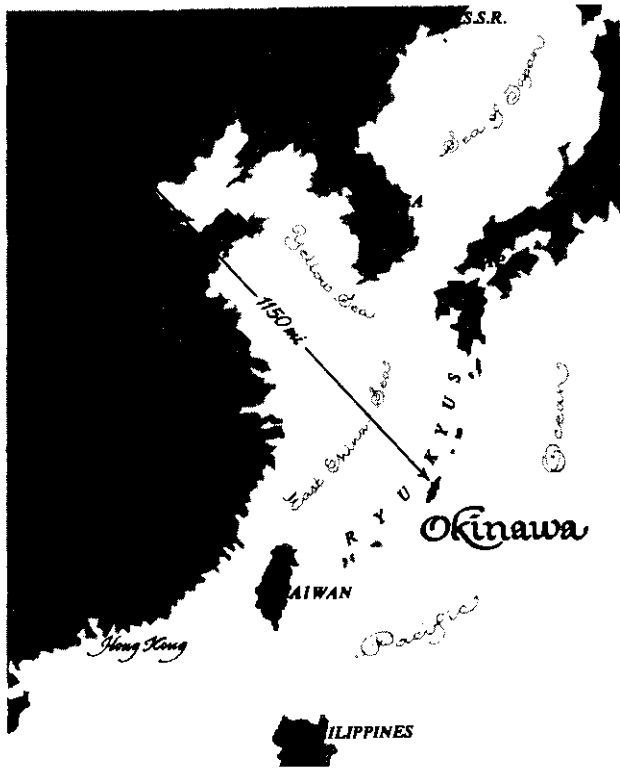
Most typhoons will be nothing more than a temporary inconvenience, however, if you follow instructions and refrain from being foolhardy. Military installations and living quarters were built to resist typhoons, and excellent weather services give ample warning of impending typhoons.

The warnings are in three forms: Condition Three indicates that a typhoon has been found but there is no immediate danger; Condition Two means that a typhoon is approaching and requires certain precautionary measures; Condition One indicates that a typhoon is a present and immediate danger. When Condition One is announced, take cover in the nearest shelter. Your local command will brief you further on what to do.

A STRATEGIC OUTPOST

Okinawa has been described as a keystone in our Pacific defenses. A glance at the map on page 10 will show you why. Located in the center of the Ryukyus chain, Okinawa is also in the center of our advance line of defense in the Pacific—a line extending from the Philippines northward through Taiwan (Formosa), the Ryukyus, and Japan to the Aleutians and Alaska. Within the radius of a few hundred miles are the free world nations of Japan, the Republic of China located on Taiwan, the Republic of Korea, and the Philippines. Also within a few hundred miles are the Communist regimes of China and North Korea, a constant threat to the security of the area.

Japan has long recognized the strategic value of the Ryukyus and formally annexed the islands in 1879. Commodore Matthew C. Perry, USN, as mentioned earlier, found Okinawa a convenient coaling site on his historic expedition to Japan in 1853. The United States is primarily interested in the Ryukyus today as an essential military base from which to contain Communist expansion in Asia. From Okinawa, air strikes and amphibious or airborne operations could be launched at once in the event of enemy aggression against free world territory in the Far East. This was demonstrated in 1950 when American troops and B-29's from Okinawa helped turn



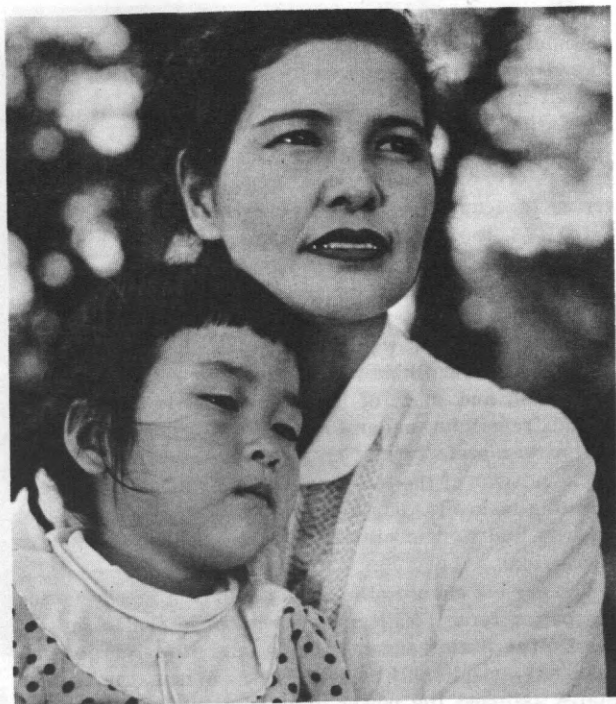
back the Communist aggressors in Korea.

Under Article 3 of the Treaty of Peace with Japan, signed at San Francisco in 1951, Japan concurs in the United States exercising the "powers of administration, legislation and jurisdiction" over the Ryukyus. The United States, however, recognizes Japan's residual sovereignty over the islands and has no intention of trying to acquire permanent possession.

In 1953, the United States relinquished the authority over the Amami-Oshima group of the Ryukyus, north of Okinawa, and Japan resumed full sovereignty over them. As long as the present international tensions in the Far East exist, however, we must maintain our present degree of authority over Okinawa and the islands of the Ryukyus east, west, and south of it. The portion of the Ryukyu Islands remaining under United States control comprises the prewar prefecture of Okinawa.

The mission of the U.S. Armed Forces in the Ryukyus—and this makes it your mission—is to help maintain our security and that of our Asian allies against Communist aggression.

You are *not* going to the Ryukyus to be a member of an occupation force. Military government of the Islands by the United States ended in 1950, and the situation has changed considerably since then. When the United States assumed the power of administration in the Ryukyus under the terms of the Treaty of Peace with



Okinawan charm . . . in Western clothing.

Japan, it also assumed the responsibility of administering the area well and of working constantly for the advancement and welfare of the Ryukyuan people. You share with our Government the obligation to do all you can to promote the welfare and win the good will of the Ryukyans.

It's More Than a Military Job

The strength of a military base depends upon more than guns and fortifications. It depends partly upon your attitude and the attitude of the Ryukyans. We urgently need the friendly cooperation of the Ryukyans, thousands of whom are employed by the U.S. Armed Forces. Duty in the Ryukyus would be far more confining and less enjoyable without the services of these diligent and faithful employees. It is your duty and privilege to maintain the friendly relations that now exist between Ryukyans and Americans.

The Ryukyans are eager to get acquainted with Americans but will not intrude on those who appear aloof. It would be a great mistake not to encourage their friendship. A smile or the slightest friendly gesture will break the ice. Mutual understanding is a solid basis for friendship. You can help attain this by mingling with the Ryukyuan people, getting to know them at first hand, and exchanging ideas with them. Invite them into your home for tea or a meal. They will appreciate the courtesy, and you will enjoy their company. What you say to the

Ryukyuan will be far more appreciated if you say it in Japanese, the language spoken by most of them. Even a few phrases, no matter how poorly pronounced, will be warmly received as an indication of your genuine interest in the Ryukyuan people.

There are several excellent reasons, aside from personal ones, for cultivating the friendship and respect of the people among whom you will serve. For one, the Communists are trying very hard to create a false impression of Americans in the minds of Asian peoples. Their propaganda mill works day and night trying to convince Asians that Americans are a crass, ignorant, arrogant people who have no consideration for the rights or traditions of others. A thoughtless word or a slight misstep on your part might serve as grist for the Communist-inspired "hate America" campaign.

The Ryukyuan will want to find out about life in the United States. By supplying facts, you can help dispel unfounded fears and suspicions and back up your Government's efforts to promote international understanding and friendship. The burden of this program falls upon you and other individual Americans overseas, for there are so many more of you than there are official ambassadors to do the job.

A LONG, CHECKERED HISTORY

The Ryukyuan are a mixture of several races, probably including Malay, Mongol, and Ainu. The Ainu, a primitive people whose modern descendants live in Japan, are of Caucasian stock, with light-colored skin, European-like features, and luxurious hair. The first settlers in the Ryukyus probably came from the Pacific islands to the south and succeeding waves from China and Japan.

Ryukyuan history is closely linked with that of two powerful neighbors—China and Japan. Chinese and later Japanese ideas and customs profoundly influenced Ryukyuan life. The Ryukyuan, however, adapted what they borrowed into a distinctly Ryukyuan culture. Both China and Japan exacted allegiance and tribute from the Ryukyus—for a time simultaneously. This, perhaps, explains why Ryukyuan once regarded China as a mother and Japan as a father.

Chinese Influence

China's policy of expansion under the Ming dynasty led to demands for tribute from weak neighboring states, among them Liu Ch'iu, as the Chinese called Okinawa. Okinawa began paying tribute to China in 1372 and continued to do so for about five centuries. At the time the payments began, Okinawa was divided into three rival kingdoms—northern, central, and southern—but by 1429

the central (Chuzan) kingdom ruled the entire island.

The Okinawans did not particularly mind having to pay allegiance and tribute to China, for the tribute payments were modest, Chinese authority was lightly felt, and the arrangement brought Okinawans increased opportunities for trade. From 1372 until the Japanese invasion of Okinawa in 1609, China's influence was dominant. Okinawans adopted many cultural features from China, and Chinese traders settled in Okinawa at Naha.

The Okinawans enjoyed a long period of peace, prosperity, and cultural advances, known as the Golden Era of Ryukyuan history, dating roughly from the unification of the island in 1429 by Sho Hashi and reaching its peak during the reign of Sho Shin, which ended in 1526. Although the Ryukyus had few natural resources from which to produce articles for trade, daring and enterprising Ryukyuan seamen ranged far and wide to carry on a flourishing maritime trade between China, Japan, and farflung parts of Southeast Asia. Okinawa became the center of this active seaborne commerce and Naha an important port for transshipment of goods to other areas.

Upon the arrival of European traders in the area—Portuguese, followed by Spanish, British, and Dutch—with better ships, improved methods of navigation, and firearms, Ryukyuan commerce began to decline. By the beginning of the 17th century it had dwindled to a limited trade between China and Japan through the Ryukyus.

Japan Enters the Picture

Japan's interest in the Ryukyus traditionally dates back to the 12th century—even before China began exacting tribute—when, according to legend, Tametomo, a distinguished Japanese warrior of the Minamoto clan, met defeat at the hands of a rival clan and fled to Okinawa. He married an Okinawan girl who bore him a gifted son, Shunten, the first of a new and able line of Ryukyuan rulers.

In 1451, the Ryukyans began paying tribute to Japan while continuing payments to China. Not until 1609, however, did Japan attempt to assert its claim to the Ryukyus by force. A Japanese expedition under the Lord of Satsuma then subdued most of the Ryukyus, including Okinawa. China did not resist Japanese encroachment, and for the next 260-odd years the Satsuma clan controlled the foreign affairs and internal administration of the Ryukyus.

The Ryukyus were most useful to Japan and China during the long period of Japanese seclusion, lasting from the 1630's until the ratification of Commodore Perry's treaty in 1854. Japan's seclusion policy made it a capital offense for Japanese merchants to leave Japan. Trade between China and Japan continued, however, through the Ryukyus. The fact that Ryukyans were paying allegiance to Japan as well as China was ignored in order to continue a trade profitable to all involved.



The influence of Japan is apparent here.

Under Japanese Rule

Japan abolished the Ryukyuan monarchy in 1879 and made the Ryukyus a prefecture (or province) of Japan, governed by Japanese officials appointed in Tokyo.

The Ryukyuan did not actively oppose the annexation, for it brought some benefits as well as drawbacks. By replacing Ryukyuan dialects with standard Japanese, it permitted the establishment of a school system and thus raised the literacy rate. Previously, isolated Ryukyuan

villages had developed cultural and linguistic patterns all their own. The annexation allowed the Ryukyuan to share the well-developed cultural advantages of Japan, such as Japanese literature, music, sports, styles, and eventually radio broadcasts and motion pictures.

Belonging to a vigorous and expanding empire insured political tranquillity. It brought such civic advances as police and fire protection and, to some degree, public health and welfare activities, public utilities, and public transportation.

Resettlement and emigration were encouraged in order to ease the old problem of overpopulation. Despite a land-reform program that gave farmers small plots of their own to cultivate and the introduction of some features of Western technology, Japanese efforts to develop the islands economically met with little success, and from an economic point of view the Ryukyus were a liability.

The Ryukyuan were regarded by the Japanese as "country cousins" and they seldom reached positions of leadership in the days of the Japanese Empire.

Okinawa's chief value to Japan was strategic. Here the Japanese built a major base to guard the southern approaches to Japan. When Iwo Jima and Saipan fell to the Allies in World War II, they appreciated the importance of Okinawa all the more.

World War II Battleground

On 1 April 1945, after intensive preparatory naval and aerial bombardment, a joint expeditionary force of the U.S. Fifth Fleet landed the U.S. Tenth Army under the command of Lt. Gen. Simon Bolivar Buckner on Okinawa. Here the Tenth Army, composed of marines and infantry, with close naval gunfire and air support, fought the last battle of World War II and the largest battle of the war in the Pacific.

In the course of the bitter struggle that lasted until 22 June, General Buckner, for whom Buckner Bay is named, was killed in action. Of the American forces, 12,520 were killed or reported missing and 36,631 wounded. Japanese casualties were much higher, and many thousands of Ryukyans—largely civilians—lost their lives.

After the island was secured it became a base for assembling a great army for the invasion of the Japanese home islands. This never became necessary, however, for Japan surrendered in August.

With the suspension of Japanese authority over the Ryukyus at the close of the war in 1945, the islands came under U.S. Military Government control, exercised by the Navy until 30 June 1946, and from then until 5 December 1950, by the Army. Since the termination of the military government in 1950, United States authority



The monument to Ernie Pyle, on Ie Shima.

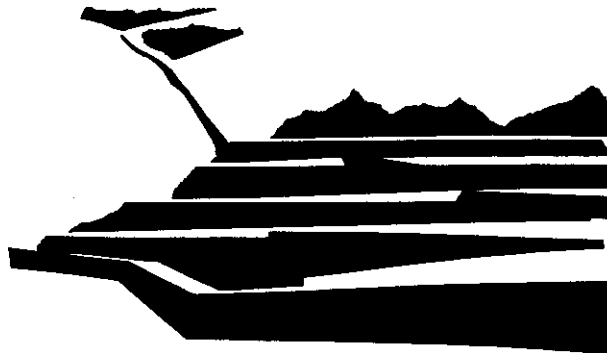
has been exercised by the U.S. Civil Administration, Ryukyu Islands (USCAR).

The effect of the war on Okinawa was almost beyond belief. In the southern part of the island, which bore the brunt of the fighting, practically everything above ground was destroyed, including about 95 percent of the buildings, both public and private, and all of the crops. Previously the poorest prefecture in the Japanese Empire, the war reduced Okinawa to utter ruin.

War Reminders

A number of reminders of the war can be seen today, such as the monument to American war correspondent Ernie Pyle on Ie Shima, a tiny island off the west coast of Okinawa; the "Cave of Virgins" where a group of volunteer nurses of high school age died; and the monument to many primary school children who perished when a ship taking them to Japan was torpedoed.

Another type of war reminder can be deadly—live explosives! These threats to life and limb still turn up occasionally. Should you come upon an object that you suspect is explosive, don't touch it. Instead, call the Ryukyus Armed Services Police (RASP) or the Security Guards. They will seal off the area and notify the Ordnance Bomb Disposal Section. It's better to give a false alarm than to risk your life investigating on your own.



A LOOK AT THE ECONOMY

The Ryukyus are not overly endowed with natural resources, unless you include in this category the picturesque scenery and warm, moist climate. Much of the terrain is too rugged for farming. Minerals are few. Water shortages are a constant threat and a handicap to economic development.

On the brighter side, the bountiful rainfall—even though it runs off rapidly—and the semitropical climate produce an astonishing variety of plant life, native both to temperate and tropical regions. This includes trees



Bananas are small but sweet.



Tempting samples of the abundant pineapple crop.

and bushes of many kinds, a number of fiber plants from which fabrics are made, farm products, and assorted flowers, among them the beautiful, fragrant Okinawa lily.

The war and postwar years stripped Okinawa of much of its usable timber. This was a serious loss to a people who use wood for building and charcoal for fuel. Measures to ease the critical shortage include a reforestation program, cutting timber on islands that are heavily forested and sparsely populated, substituting concrete and tile for lumber in building, and using petroleum products for fuel.

Weaving, dyeing, and designing of cloth are traditional industries. The chief plants that supply the raw materials are banana, sisal, ramie, and pandanus.

Until the war, most of the people subsisted on sweet potatoes and rice grown on very small farms, supplemented by a limited variety of fish caught in nearby waters. The Japanese promoted silk and sugarcane production for export.

Since World War II

The war left the Ryukyuan economy, which had never been robust, in a critical condition. In the short span of years since then, Okinawa has staged a remarkable comeback with the assistance of Americans stationed there and financial and technical aid from the United States.

To provide immediate relief for the destitute Okinawans, rations, medicine, and clothing were supplied



Homemaking skills are developed in the classroom.

from U.S. military stores. Congress quickly voted funds for an organized aid program, which reached a peak of \$50 million in fiscal year 1950 and declined sharply later as the need diminished. USCAR financial management programs, notably that of the Development Loan Corporation, have contributed enormously to the economic growth. The Development Loan Corporation is virtually the only source of development capital.

As a result of these measures and the hard work of the Okinawans, most Okinawans are far better off today than they were before the war. Their standard of living, life expectancy, and educational opportunities have topped prewar levels. Through military construction and engineering there are better highways, port facilities, schools, power and water systems, and public buildings. Military spending for Ryukyuan goods and services has boosted the economy. Jobs with the U.S. Armed Forces are providing a livelihood for thousands of Ryukyus and training them in technical skills and the use of modern equipment.

Agriculture is still the mainstay of the economy. Although modern techniques and equipment are increasing the food supply, food imports far exceed exports. Sweet potatoes, rice, and fish continue to be food staples. Of these, only sweet potatoes are plentiful enough to supply local needs. Grains (including rice) and fish are the chief foods imported. Rice grows less abundantly than vege-

tables, since it requires more fertile soil and a more plentiful and constant supply of water.

Sugarcane is well ahead among cash crops—those grown in sufficient quantities to export after domestic needs are met. Another increasingly important cash crop is pineapple.

Fishing is a small but growing industry. Commercial fisheries developed since the war are increasing the supply and variety of fish. Whatever is not used immediately is salted, smoked, canned or quick frozen. Fishing for deep-sea fish once consisted only of catching porpoises stranded in the shallows, but modern whaling boats and freezing and processing facilities have put whaling on a sound basis.

Ryukyuan livestock includes pigs, goats, horses, and cattle, with pigs well ahead in numbers.

Although industry contributes less than 10 percent of the national income, some progress has been made and more is promised. There are approximately 1,500 small industrial enterprises of all types in the Ryukyus, and the national income from manufacturing and mining is rising steadily. Among the leading industries are processing plants for sugar, pineapples, and fish. Soy sauce, soybean paste, cigarettes, cement products, textiles, plywood, fertilizer, and rubber goods are also produced commercially.

To appreciate the industrial growth, you must remember that industry scarcely existed at the end of the war.



New methods have put fishing on a commercial basis.



Roundup time for a Ryukyuan cowboy.

At that time, all the elements needed for a sound industrial economy were lacking or inadequate—raw materials to manufacture, first-rate transportation and communications facilities, and a skilled labor and managerial force familiar with modern industrial and commercial methods.

Cottage industries, similar to those in the United States a century ago, are still turning out excellent products that are useful as well as artistic. The work of skilled Ryukyuan craftsmen, about which more will be said later, finds a ready market among Americans. Lacquerware, handmade and hand-carved furniture, hand-turned pottery, and handspun and woven textiles are exported.

Ryukyuan Women at Work

Just about everybody in the Ryukyus works. Small children carry even smaller children on their backs to free their bigger sisters for carrying burdens on their heads and their bigger brothers for carrying burdens on yokes across their shoulders. Women work alongside their husbands in the fields and help pull the fishing boats up on the beach.

Farming occupies almost half the people and fishing a much smaller, though growing, percentage. Less than 30 percent of the land is arable, but what there is is tilled diligently. Many Ryukyuan women work at small family businesses and many others are engaged in wholesale or retail trade, construction work, industry, or work for the Ryukyuan Government. Transportation, journalism, enter-



Hard-working women can wield a shovel if necessary.

tainment, and specialties too numerous to classify occupy smaller numbers of the work force.

The U.S. Armed Forces employs about 40,000 Ryukyuan women in a variety of jobs, many of which were unknown in the islands before 1945. These conscientious and competent workers operate heavy equipment and complicated machinery, construct and maintain power and communications networks, perform clerical duties in offices, wait on tables at service clubs, serve as clerks in exchanges, assist service wives as domestics—in short, do

about every kind of work, including the most exacting.

Although the real per-capita Ryukyuan income has risen about one-third above the prewar level, it is still under \$250 per year. This is higher than in many other Asian areas. Still, it would be tactless for you to make a show of your money.

A DEMOCRATIC GOVERNMENT

Americans and Ryukyans alike can take pride in the democratic Government of the Ryukyu Islands (GRI) developed under American guidance since World War II. You will want to know something about its structure and functions. You will also be interested in another governing body—the U.S. Civil Administration, Ryukyu Islands (USCAR), for the Ryukyus are the only area in the world where the U.S. Army is now conducting a civil affairs program.

Its Organization and Functions

With the termination of military government operations in 1950, USCAR was established. Its basic mission is to promote a responsible Ryukyuan Government, based on democratic principles, and to build up the islands' economy and the standard of living. Although these functions are assigned to USCAR, it is the duty of every American serving in the Ryukyu Islands to help carry them out.

Heading USCAR is a High Commissioner of general



Democracy in action. Ryukyuan Assembly, Naha.

officer rank who wears three hats.

As High Commissioner, he acts in effect as civil governor, and is responsible for preserving to the Ryukyuan people the basic liberties that Americans enjoy, including freedom of speech, assembly, petition, religion, and press, and security from unreasonable searches and seizures, and from deprivation of life, liberty, or property without due process of law. While these are duties of USCAR, it is also the duty of all Americans serving in the Ryukyus to assist in carrying them out by making sure they do not infringe on these rights in any way.

As Commanding General, U.S. Army, Ryukyu Islands, IX Corps, he has these important military duties: Providing and coordinating the ground defense of the Ryukyus, maintaining the necessary logistical base, and, within certain limits, responsibility for air and sea operations. His third hat is that of representative of the Commander in Chief, Pacific. In this capacity, he is responsible for matters of joint concern to the various components of the Armed Forces.

USCAR is divided into departments similar in function to our own governmental departments. They are: Economic development, education, finance, judicial, public safety, labor, legislative and legal, public affairs, and public health and welfare.

Municipal elections were held in 1948 and elections for regional officials in 1950.

In 1952 a central government—the Government of the Ryukyu Islands—was established, with legislative, executive, and judicial branches. GRI officials are all Ryukyuan. The American High Commissioner appoints the chief executive after consulting with the legislature. All other GRI officials are elected by popular vote or appointed by the Ryukyuan chief executive. The members of the one-house legislature are elected. GRI departments correspond to those of USCAR, and each of them cooperates with its USCAR counterpart.

Universal suffrage extended the vote to women. Ryukyuan take their voting responsibilities seriously.

They now elect more of their officials, proportionately, than they did as a prefecture of Japan.

There are several active political parties or groupings, among them the Okinawa Liberal Democratic Party (conservative); Okinawa Socialist Masses Party (middle of the road); Independents; and a grouping of leftist parties, including the Okinawa People's Party and Okinawa Socialist Party, which affiliate with a leftist front group called the Liaison Council for Democracy (*Minren*). All parties favor return of the Ryukyus to Japan—the leftist parties immediately.

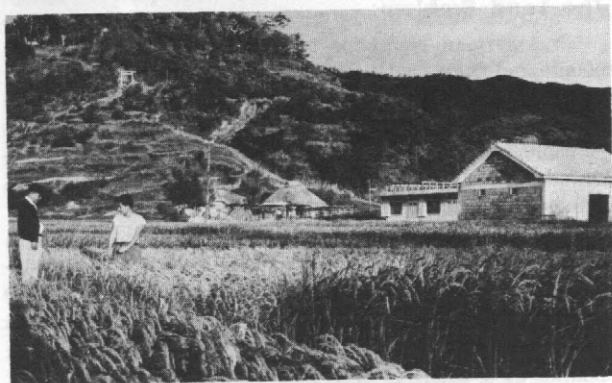
The Land Problem

No American can hope to understand the Ryukyuan people and their problems unless he keeps certain facts in mind. To begin with, Okinawa is one of the most densely populated islands in the world. This fact alone will help you understand why friction sometimes develops between Okinawans and Americans. Here are some statistics to think about.

More than 876,000 people live in the Ryukyu Islands in a land area of about 850 square miles—an area considerably smaller than Rhode Island. Of these, some 700,000 are crowded together on Okinawa, which covers less than 500 square miles. The population density of the Ryukyu Islands as a whole is over 1,000 persons per square mile, an area occupied by about 58 people in the United States.

Furthermore, the Okinawan population is far from static—it grows at the rate of some 20,000 per year. Since the war the life expectancy of Okinawans has risen sharply. This means an increasing number of mouths to feed in a land of limited resources.

Emigration is one way of easing the population pressure. Ryukyans emigrated in considerable numbers to South America and on a smaller scale to Hawaii and the United States until the war. The number emigrating has dwindled since then, but movement to South America continues on a limited scale. It may interest you to learn



Ryūkyuans make the most of the limited farmland.

that there are in Hawaii some 30,000 descendants of Ryukyans, now U.S. citizens.

Another solution to the problem of survival is to diversify and industrialize the economy. A start in this direction has been made. But the transition from an agricultural to an industrial economy takes time. It took about 150 years in the United States. Even with the advice and assistance of the United States it is going to be a difficult adjustment for the Ryukyans.

A Postwar Land Problem

United States military installations on Okinawa require considerable space, some of it arable land. When you consider that only 27 percent of Ryukyuan land is arable and how highly the possession of land is prized, you can easily understand why the land occupied by Americans has been a source of some discontent.

Since 1950, when military government by the United States ended, the land used by American forces has been rented from the Okinawan owners. The destruction of land ownership records during the war has made it difficult in some cases to determine just who owns what land, but on the whole the rental arrangement is considered fair by all concerned.

In addition to paying rent for the land used by our Armed Forces, the United States is financing the resettlement of farm families, especially those whose land is being



A small sample of Okinawa's dense population.

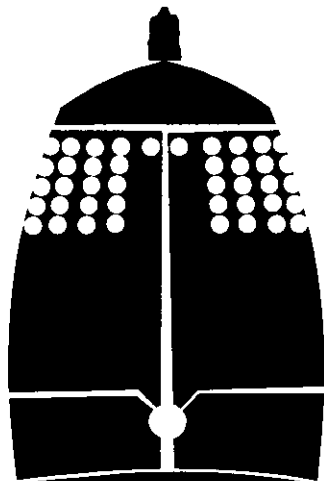
used by U.S. forces, from overpopulated areas of Okinawa to less thickly populated areas on Okinawa and to other islands in the Ryukyus.

Most Okinawans are fully aware of the benefits—economic as well as security—derived from the presence of American forces on the island. They appreciate the assistance the United States has provided in rehabilitating their country and raising the standard of living. Only a few extremists would welcome our immediate departure from Okinawa, though the majority of Okinawans favor eventual reversion to Japan. To dispel suspicion of American motives among the extremists, and to maintain the friendship of Okinawans as a whole, it is important that you behave at all times, whether on or off duty, in such a way as to convince the Okinawans that we have no axe to grind—that you are there as a friend and ally.

Ryukyuan-American Friendship

Close ties of friendship have developed between Ryukyuan and Americans since Commodore Perry arrived at Naha in 1853. The anniversary of Perry's visit is celebrated as Ryukyuan-American Friendship Week each year.

When Perry returned to the United States, he brought with him a beautiful brass bell, a gift from the Regent, which he hoped would ring out from the very top of the Washington Monument. This hope failed to materialize,



so Perry's wife presented the bell to the U.S. Naval Academy at Annapolis, where it is rung to mark such important occasions as a Navy football victory over Army. The ancient bell, cast in 1456—36 years before Columbus discovered America—had hung in Gokoku-ji, a Buddhist temple on Okinawa.

As a token of our appreciation for the gift to Perry, the United States High Commissioner presented a replica of the ancient bell, complete in every detail, to the University of the Ryukyus in 1960.

If you meet Okinawans who seem especially anxious to talk about the United States in English, they will probably be from one of two groups who have gone to the United States for periods of study. Members of one group are leaders in professions and government who visit the United States for several months to study and observe American democracy. The second group consists of students who study in American colleges and universities for periods of one to two years in most cases. The influence of the exchange program is felt in many ways.

American-sponsored cultural centers promote understanding and good will between Americans and Ryukyans. These are equipped with auditoriums, books and magazines, movies and filmstrips, records, maps, and pictures. They sponsor theater and folk dancing groups, art exhibits, musical gatherings, classes in flower arrangement, and handicraft and English language clubs.