

**CONFIDENTIAL**

Copy 1 of 15 Copies  
4-3 Inf  
12 SUE (BS568878) SVN  
142000 Feb 68  
EDS

OPLAN 4-68 (HAWK) Relief/Reinforcement of CIDG Camps

References: Maps, S Vietnam 1:50,000; AMS L7014: Sheets, 6738III & 6738IV

Task Org: Current TF Organization

1. SITUATION:

a. Enemy forces:

(1) The enemy has freedom of movement, resources and available time to prepare detailed plans for the assault of isolated USASF/CIDG Camps.

(2) Enemy forces can be assembled over extended periods of time and can assault isolated USASF/CIDG Camps before a relief force can effectively react.

(3) Enemy attacks on USASF/CIDG Camps are most likely to occur during periods of reduced visibility when friendly capabilities to support, reinforce or relieve camps are minimized.

(4) Enemy plans for an attack on isolated camps will probably include establishment of ambushes on avenues of approach likely to be used by friendly relief forces.

b. Friendly forces:

(1) On order 11th Inf Bde (Lt) provides one infantry battalion-sized force and one arty btry OPCON to Americal Division for the purpose of reinforcing or relieving CIDG Camps at BA TO, GIA VUC and MUN LONG, and prepares to relieve or reinforce designated USASF/CIDG Camps located at THIEN PHUOC, TRA BOND, HA THANH and KHAM DUC as directed by Americal Division.

(2) 3-1 Inf.

(a) On order releases one rifle company to OPCON 1-20 Inf within two hours following receipt of notification.

(b) Prepares to assume mission of 1-20 Inf.

(3) 1-20 Inf: Provide command and staff element to plan and control relief force and one rifle company.

**CONFIDENTIAL**

**CONFIDENTIAL**

(4) 6-11 Arty: On order provide one DS 105mm How Btry to 1-20 Inf.

(5) R/1st Cav: Continue present mission.

(6) C/26th Engr: On order provide one engr sqd to OPCON 1-20 Inf with demo and pioneer capabilities.

c. Attachments and detachments: Task Org.

d. Assumptions:

(1) Attacks on USASF/CIDG Camps will be conducted during hours of reduced visibility, darkness and/or inclement weather.

(2) Sufficient aircraft will be available to move reaction force as required.

(3) LZs will not be secure and enemy will probably interdict them.

(4) Avenues of approach into besieged camps will support foot movement only.

(5) LZs will not be marked unless a USASF/CIDG patrol not in contact is available for marking of LZs.

(6) Enemy will attack USASF/CIDG Camp with sufficient forces to successfully overrun the installation.

(7) Pursuit operations will be hampered by enemy dispersing his forces into small groups and utilizing multiple routes of withdrawal.

2. MISSION: On order 4-3 Inf releases one rifle company to OPCON 1-20 Inf for employment as part of a battalion-sized reaction force to relieve/reinforce USASF/CIDG Camps and prepares to assume mission of 1-20 Inf.

3. EXECUTION:

a. Concept of Operation:

(1) Maneuver:

On order 4-3 Inf releases to OPCON 1-20 Inf, company not engaged or company least engaged in combat operations. Upon notification of release to OPCON 1-20 Inf, company will immediately select, secure and organize PZ for pickup by helicopter and prepare for employment as part of a battalion-sized reaction force. **Adopt See CHAME 1**

(2) Fire Support:

**CONFIDENTIAL**

CONFIDENTIAL

(a) Arty fires provided by units located at and within supporting range of designated CIDG Camps.

(b) 7th USAF provides air support as required.

(c) Armed helicopter support as required on request.

b. Co A.

c. Co B.

d. Co C.

e. Co D.

f. Co E.

g. Coordinating instructions:

(1) Staff and Commanders down to and including plat level conduct recon of obj areas and IZs on order this Hq.

(2) Be prepared for commitment of 72 hours or longer.

(3) Units select possible PZs during normal operations.

(4) Units maintain and update lift requirements for personnel and equipment daily and inform this Hq of any changes.

(5) Upon notification of impending deployment, establish and maintain continuous communications with 1-20 Inf.

(6) Effective for planning on receipt; for execution on order.

4. ADMINISTRATION AND LOGISTICS:

*Delete See ch 1*  
Annex C: ~~Administration and Logistics.~~

5. COMMAND AND SIGNAL:

a. Signal: Current SOI/SSI in effect.

b. Command:

(1) Bn CP: No change. *add see ch 1*

CONFIDENTIAL

CONFIDENTIAL

(2) 11th Bde CP: No change.

Acknowledge:

Annexes: A - Intelligence (TBP) *Adkins* ADKINS  
B - Fire Support (TBP) LTC  
C - ~~Administration & Logistics (TBP)~~

*OPNS Overlay*  
D - Admin & Logistics - A0000 *See CN#2*  
Distribution: Special

OFFICIAL:

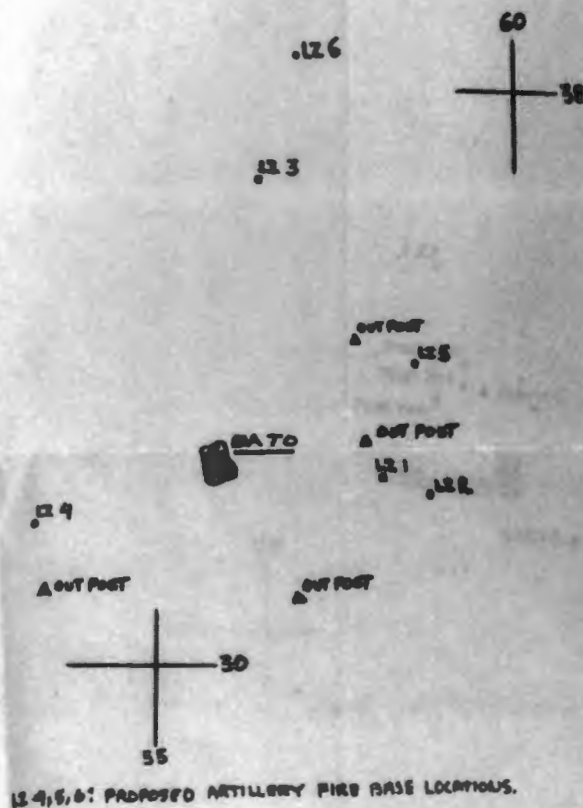
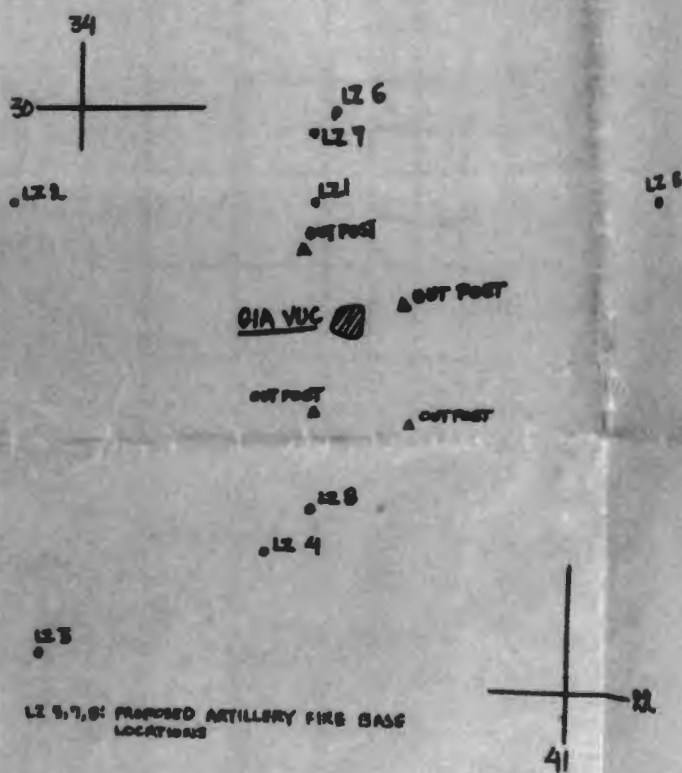
HOLCK  
S3

CONFIDENTIAL

COPY 1 OF 8 PAGES

CONFIDENTIAL

ANNEX C (OPERATIONS OVERLAY) TO OPLAN 468 (HAWK) RELIEF/REINFORCEMENT OF CIDG CAMPS  
4TH BN, 3D INF, 11TH INFANTRY BRIGADE, LZ SUE (568070)



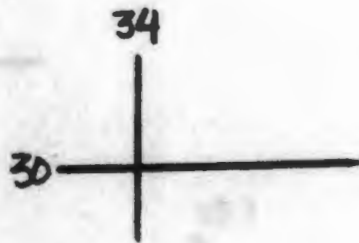
OFFICIAL:

HOLCK  
9-3

ADKINS  
LTZ

CONFIDENTIAL

ANNEX C (OPERATIONS OVERLAY) TO OPLAN 4-6  
4TH BN. 3D INF. 11TH INFANTRY BRIGADE



• LZ 2

• LZ 6  
• LZ 7

• LZ 1

▲ OUT POST

• LZ 5

GIA VUC 

▲ OUT POST

OUT POST  
▲

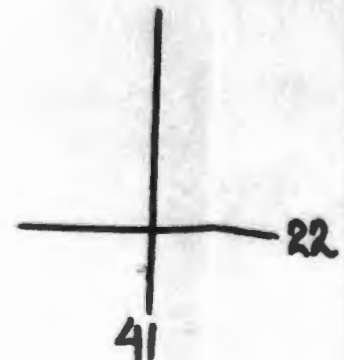
▲ OUT POST

• LZ 8

• LZ 4

• LZ 3

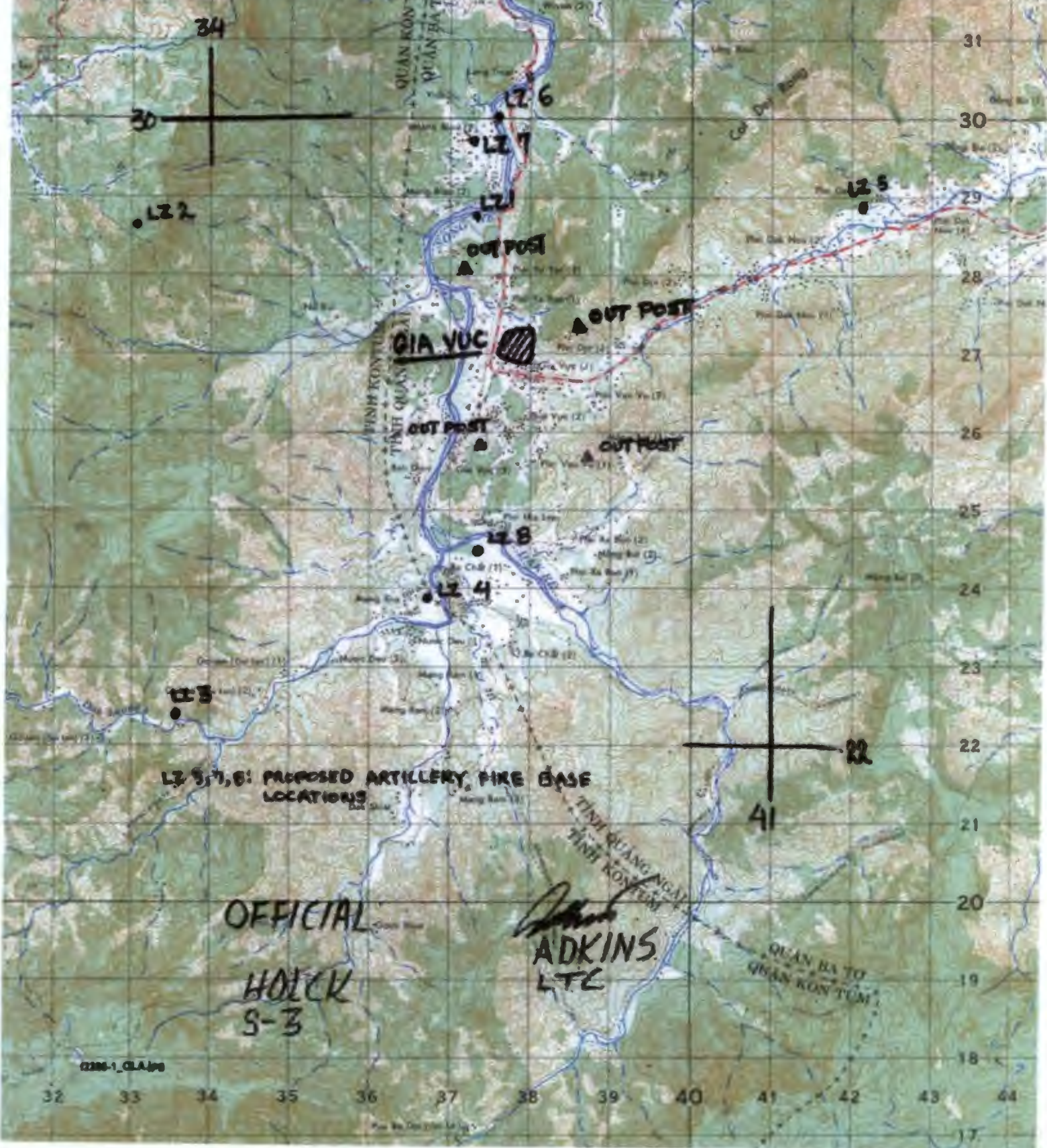
LZ 5, 7, 8: PROPOSED ARTILLERY FIRE BASE  
LOCATIONS



ANNEX C (OPERATIONS OVERLAY) TO OPLAN 4-68 (HAWK) RELIEF/REINFORCEMENT OF CIDG CAMPS

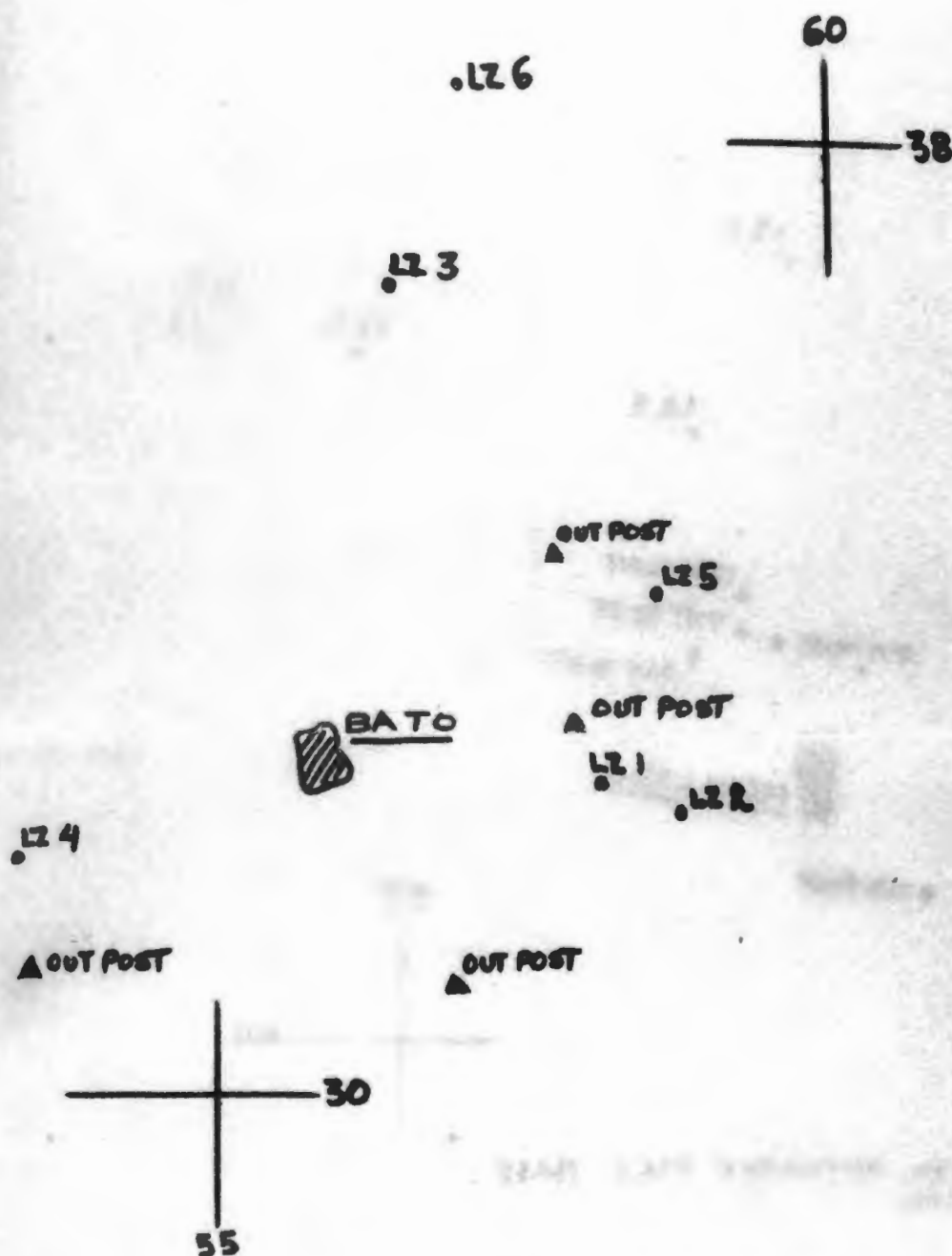
4TH BN, 3D INF, 11TH INFANTRY BRIGADE, LZ SUE (568878)

Two overlays on one page. Table 1 of 2.



02286-1\_GIA/04

8(HAWK) RELIEF/REINFORCEMENT OF CIDG CAMPS  
DE. LZ SUE (568878)



LZ 4, 5, 6: PROPOSED ARTILLERY FIRE BASE LOCATIONS.

*Adkins*  
ADKINS  
LTC

ANNEX C (OPERATIONS OVERLAY) TO OPLAN 468 (HAWK) RELIEF/REINFORCEMENT OF CIDG CAMPS  
 4TH BN, 3D INF, 11TH INFANTRY BRIGADE, 12 SUE (568078)



LZ 4, 5, 6: PROPOSED ARTILLERY FIRE BASE LOCATIONS

OFFICIAL:

HOLCK  
 S-3  
 S-3

NÚ TÂN RI  
 ADKINS  
 LTC

52  
57

LZ 1

LZ 3 LZ 5  
LZ 4

LZ 2

OUT POST  
OUT POST  
OUT POST  
OUT POST

MINH LONG

LZ 7

OUT POST

LZ 6

57  
44

LZ 1, 5, 7: PROPOSED ARTILLERY FIRE BASE LOCATIONS.

ANNEX C (OPERATIONS OVERLAY) TO PLAN 4-60 (HANK) REUSE/REINFORCEMENT OF KIDG CAMPS  
4TH BN. 30 INF. 11TH INFANTRY BRIGADE, LZ 506 (568078)

52  
57

OUT POST  
OUT POST  
OUT POST  
OUT POST

MINH LONG

MINH LONG (CRUNCH)

OUT POST

57

44 50

Grid alignment was not correct. Value used with assumption that the other grid alignment values were correct.

LZ 1, 5, 7: PROPOSED ARTILLERY FIRE BASE LOCATIONS.

Revised  
27 Feb 68  
DRE

CONFIDENTIAL

Copy 1 of 8 Copies  
4-3 Inf  
LZ SUE (B9568878) SVN  
262100 Feb 68  
AUG

Change 1 to OPLAN 4-68 (HAWK) Relief/Reinforcement of CIDG Camps

OPLAN 4-68 (HAWK) Relief/Reinforcement of CIDG Camps, this headquarters, 142000 Feb 68, is changed as follows:

\* \* \* \* \*

3. a. (1) (ADDED) Company will also be prepared to provide security for selected arty fire base and to conduct CA into IZ as directed and move to assault vic besieged USASF/CIDG Camp.

\* \* \* \* \*

4. (DELETED) Annex C: Administration and Logistics. (ADDED):

a. Administration: No change.

b. Logistics:

(1) All personnel carry basic load of small arms ammunition.

(2) All units be prepared to airlift 81mm Mortars by helicopter.

(3) S4/Service Platoon:

(a) Prepare to airlift three (3) days' supply of C-rations to reaction force company.

(b) Prepare to airlift 100 rds HE and 50 rds ILL 81mm Mortar ammunition. Ammunition will be airlifted with reaction force company.

(c) Coordinate with S4, 1-20 Inf for resupply of ammunition. Be prepared to assume responsibility of TF ammunition resupply from 1-20 Inf.

\* \* \* \* \*

5. b. (1) (ADDED) Reaction force company enter 1-20 Inf alternate command net upon notification of release to OPCON 1-20 Inf.

\* \* \* \* \*

Annexes: C (DELETED) Administration & Logistics (TRP). (ADDED) Opns Overlay.

CONFIDENTIAL

POSTED  
15 MAR 68

CONFIDENTIAL

Copy 1 of 8 Copies  
4-3 Inf  
LZ SUR (BS568878) SVN  
041430 Mar 68  
RAV

Change 2 to OPLAN 4-68 (HAWK) Relief/Reinforcement of CIDG Camps

OPLAN 4-68 (HAWK) Relief/Reinforcement of CIDG Camps, this headquarters, 142000 Feb 68 and Change 1 to OPLAN 4-68 (HAWK) Relief/Reinforcement of CIDG Camps, this headquarters, 262100 Feb 68, is changed as follows:

\* \* \* \* \*

4. (DELETED)

a. Administration: No change.

b. Logistics:

(1) All personnel carry basic load of small arms ammunition.

(2) All units be prepared to airlift 81mm Mortars by helicopter.

(3) S4/Service Platoon:

(a) Prepare to airlift three (3) days' supply of C-rations to reaction force company.

(b) Prepare to airlift 100 rds HE and 50 rds ILL 81mm Mortar ammunition. Ammunition will be airlifted with reaction force company.

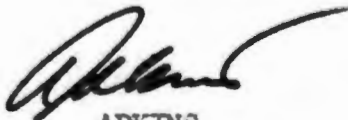
(c) Coordinate with S4, 1-20 Inf for resupply of ammunition. Be prepared to assume responsibility of TF ammunition resupply from 1-20 Inf.

(ADDED): Annex D: Administration and Logistics (TBP)

\* \* \* \* \*

Annexes: (ADDED) D: Administration and Logistics (TBP)

Acknowledge:

  
ADKINS  
LTC

Distribution: Special

OFFICIAL:

HOLCK  
S3

CONFIDENTIAL

CONFIDENTIAL

Acknowledge:



ADKINS

LTC

Distribution: Special

OFFICIAL:

HOLCK  
S3

CONFIDENTIAL