

CONFIDENTIAL  
**CONFIDENTIAL**

Copy / of 3 Copies

4-3 Inf

LZ O'CONNOR (AT934243) RVN

031500 H Aug 68

FTA

FRAGORD 50-68 to OPORD 7-68

Reference: Maps, S Vietnam 1:50,000; Series L7014; Sheets 6640 II & III.

|           |           |                  |                       |
|-----------|-----------|------------------|-----------------------|
| Task Org: | A/4-3 Inf | E/4-3            | B/1-14 Arty (GS)      |
|           | B/4-3     | HHC/4-3          | D/5-46 Inf (OPCON)    |
|           | C/4-3     | LRRP X-RAY/4-3   | 2/B/4-31 Inf (OPCON)  |
|           | D/4-3     | B/3-82 Arty (DS) | 3(-)/H-17 Cav (OPCON) |

1. MISSION: 4-3 Inf secures LZ KAREN (AT913288), LZ LURCH (AT926238), LZ O'CONNOR (AT934243), and HILL 210 (AT939212); conducts offensive operations in assigned sector; commences movement from TF COOKSEY AO to 198th LIB AO; assumes security of HILL 54 (BT396145) and OP 10 (BT400150); assumes security of Ba Bau Bridge (BT379174) and Ong Bau Bridge (BT430109).

2. Co A moves by CH-47B from LZ O'CONNOR to HILL 54, commencing at 040953 H Aug 68; assumes security of HILL 54 with Co C and conducts 2 plat size ambushes at coordinates BT393137 & BT397150; one squad secures Ba Bau Bridge (BT379174).

3. Co B secures LZ O'CONNOR; establishes minimum of 3 night OPs; conducts plat combat sweep to a range of 500m from FSB perimeter, commencing 040600 H Aug 68; prepares to move by CH-47B from LZ O'CONNOR to CHU LAI Trains.

4. Co C moves from LZ LURCH to HILL 54 by CH-47B, commencing 041130 H Aug 68; assumes security of HILL 54 with Co A; 3d plat moves to and secures OP 10 (BT400150) at 041415 H Aug 68; provides one squad for security of Ong Bau Bridge (BT430109).

5. Co D secures LZs KAREN & LURCH; establishes minimum of 3 night OPs per FSB; secures arty move from LZ KAREN to LZ LURCH; conducts plat combat sweep, commencing 040600 H Aug 68, to a range of 500m from FSB perimeter; prepares to move to HILL 54.

6. Co E prepares for movement to HILL 54; Recon Plat OPCON Co D.

7. D/5-46 Inf(-) moves by CH-47B from HILL 210 04 Aug 68; released from OPCON 4-3 Inf upon completion of extraction.

CONFIDENTIAL  
**CONFIDENTIAL**



CONFIDENTIAL  
**CONFIDENTIAL**

8. 2/B/4-31 Inf moves to and assumes security of HILL 210; OPCON 4-3 Inf upon arrival at HILL 210.

9. 3(-)/H-17 Cav OPCON 4-3 Inf, effective arrival of 4-3 Inf at HILL 54; provides 2 APCs for security of TAM KY Bridge (BT330209), and 2 APCs for security of ONG BAU Bridge (BT430109).

Acknowledge:

  
RUSSELL  
LTC

Annex A - Operation Overlay

Distribution: S

OFFICIAL:

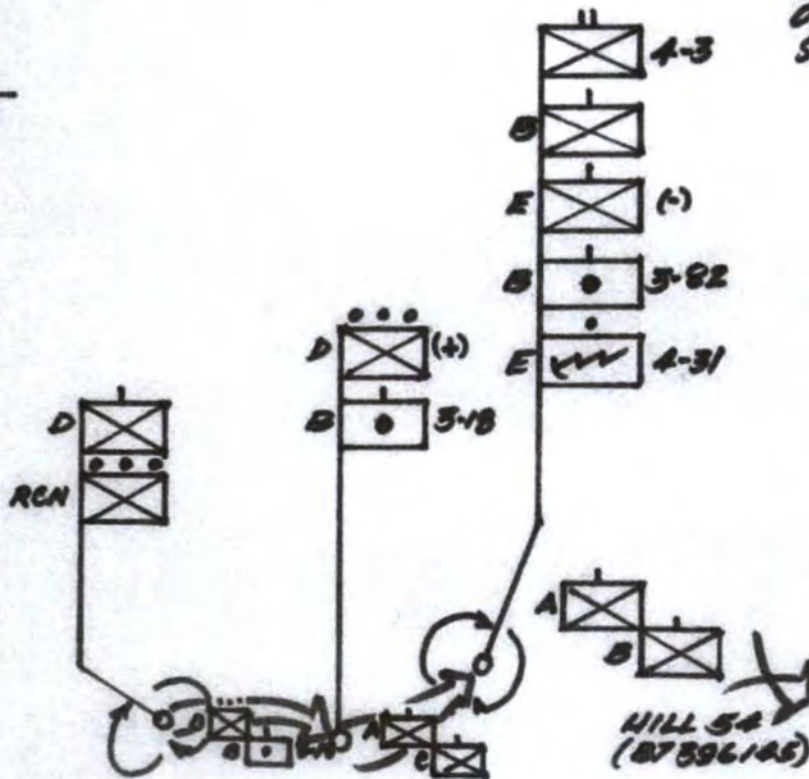
McANAW  
S3

CONFIDENTIAL  
**CONFIDENTIAL**

~~CONFIDENTIAL~~  
~~CONFIDENTIAL~~

ANNEX A (OPERATION OVERLAY) TO  
FRAG ORD 50-68 TO OPORD 7-68  
(PAGE 1 OF 2 PAGES)

COPY 1 OF 3 COPIES  
4-3 INF  
LTJ O'CONNOR (87994243) AMN  
031500 AUG 68  
SCP



ACKNOWLEDGE:

DISTRIBUTION: S

OFFICIAL:

MCANAW  
S3

Russell  
RUSSELL  
LTC

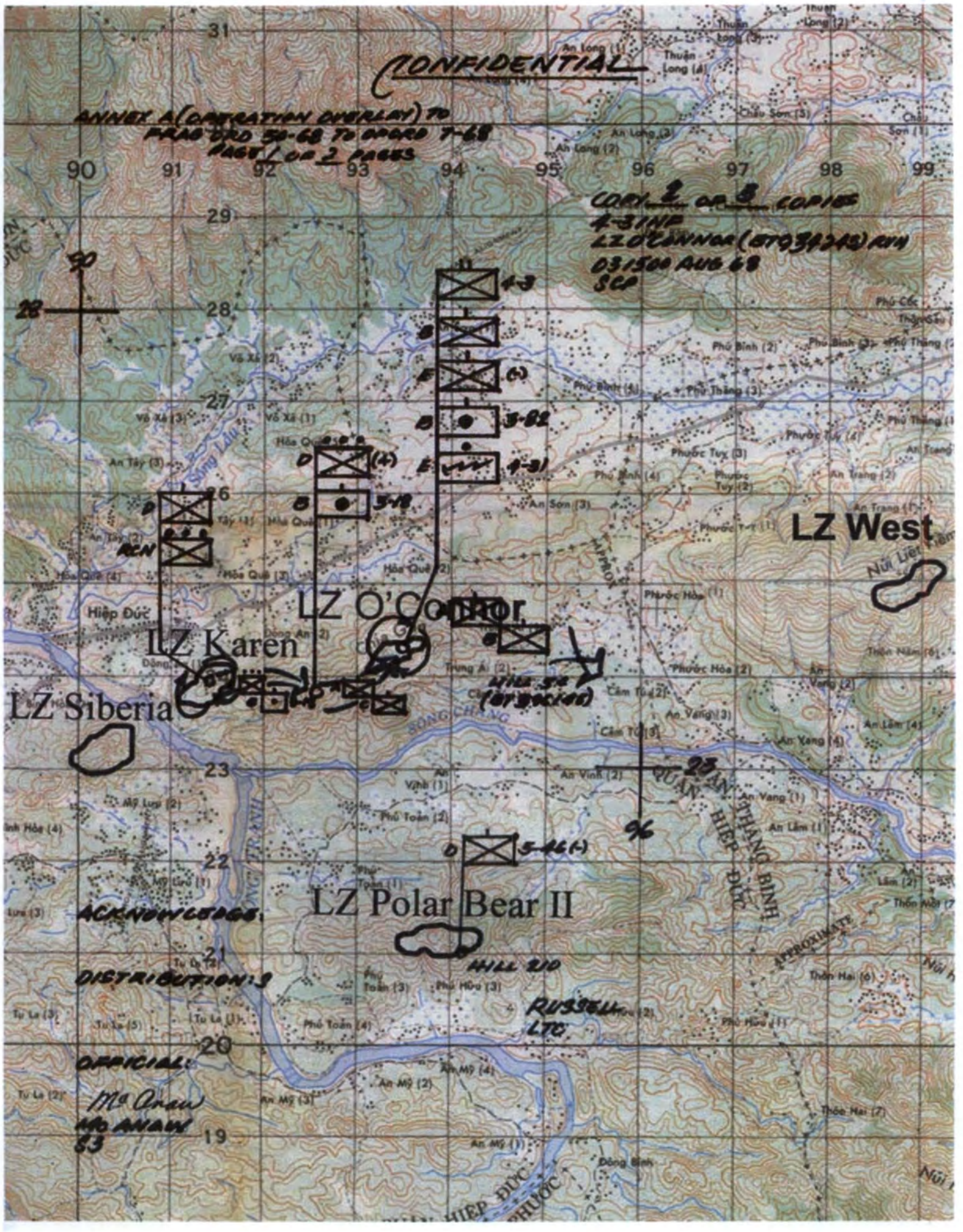
~~CONFIDENTIAL~~  
~~CONFIDENTIAL~~



**CONFIDENTIAL**

ANNEX A (OPERATION OVERLAY) TO  
FRAG ORD 50-68 TO ORD 7-68  
PAGE 1 OF 2 PAGES

COPY 2 OF 3 COPIES  
4-51P  
LZ O'CONNOR (BT039245) RVN  
031500 AUG 68  
SCP



LZ West

LZ O'Connor

LZ Karen

LZ Siberia

LZ Polar Bear II

ACKNOWLEDGE

DISTRIBUTION: 3

OFFICIAL

Mr. Anan  
83

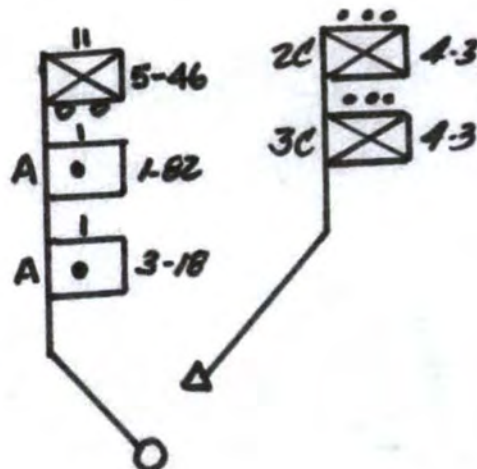
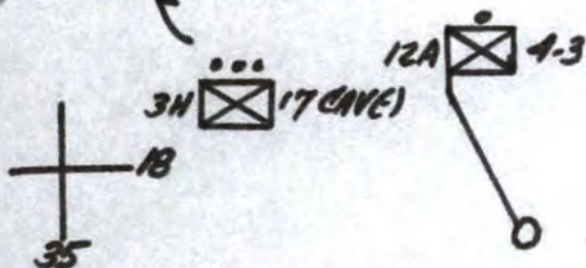
RUSSELL  
LTC



EX A (OPERATIONS OVERLAY) TO  
FRAG ORD 50-68 TO OPORD 7-68  
(PAGE 2 OF 2 PAGES)

TAN KY  
(BT 330209)

COPY 1 OF 3 COPIES  
4-3 INF  
Hill 54 (BT 396 MS) RVN  
030900 AUG 68  
BT



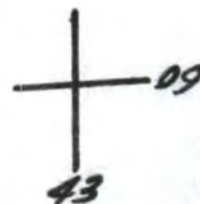
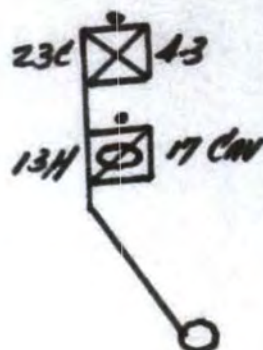
ACKNOWLEDGE:

DISTRIBUTION: S

OFFICIAL:

McANAW  
S3

Russell  
RUSSELL  
LTC





ANNEX A (OPERATION OVERLAY) TO  
FRAG ORD 50-68 TO OPORD 7-68  
(PAGE 2 OF 2 PAGES)

TAM KY  
(BT 330209)

COPY 2 OF 3 COPIES  
1-3 INF

HILL 54 (BT 396 MS) RVN  
030900 AUG 68  
RBT

3H 17 CM

12A 4-3

5-46

2C 4-3

3C 4-3

1-82

3-18

HILL 54

A 1  
C 1

23C 4-3

13H 17 CM

ACKNOWLEDGE:

DISTRIBUTION: 8

OFFICER:

McANAN  
McANAN  
53

RUSSELL  
ETC

09  
43  
FAT CITY