

CONFIDENTIAL

File
WAM
Copy of 12 Copies
2d Bn 1st Inf, 196th Bde
LZ HAWK HILL (BT225315) RVN
161130H January 1970

Frag Order 3 to OPORD 03-70

1. Co A:

- a. Continue OPCON to 1/1 Cav.

2. Co B:

- a. Continue Defense of Hawk Hill.
- b. Continue Arty survey party security mission.
- c. Be prepared mission for recon of grids BT2130, BT2131, BT2132 and west half of BT2230 continues in effect.

3. Co C:

- a. Continue recon in force in assigned AO. (see overlay)
- b. Be prepared to conduct blocking mission for 1/1 Cav, on order.

4. Co D:

- a. Continue combined recon in force operations in assigned AO. Concentrate activities in cross-hatched area on attached overlay. (see overlay)
- b. Be prepared to conduct coordinated perimeter defense with F/17 Cav.
- c. Be prepared to PZ for CA on 3 hours notice.

5. Co E:

a. Mortars:

- (1) Continue current support missions.
- (2) Be prepared to provide one mortar to Co C mission continues in effect.

b. Recon:

- (1) Continue screening mission in assigned AO.
- (2) Be prepared mission to become OPCON to Co B remains in effect.

GROUP 4
DOWNGRADED AT THREE YEAR INTERVAL
DECLASSIFIED AFTER 10 YRS.

CONFIDENTIAL

CONFIDENTIAL

Frag Order 3 to OPORD 03-70

6. Coordinating Instructions:

a. Submit tentative patrol plans, NDP location, ambush locations and night patrol plans prior to 1200H daily.

b. Submit locations every hour on the odd hour during hours between 0700H and 1700H. Every hour on the hour between 1800H and 0700H.

ACKNOWLEDGE:

ANNEX A (Operation overlay)

NERONE
LTC

DISTRIBUTION: Special

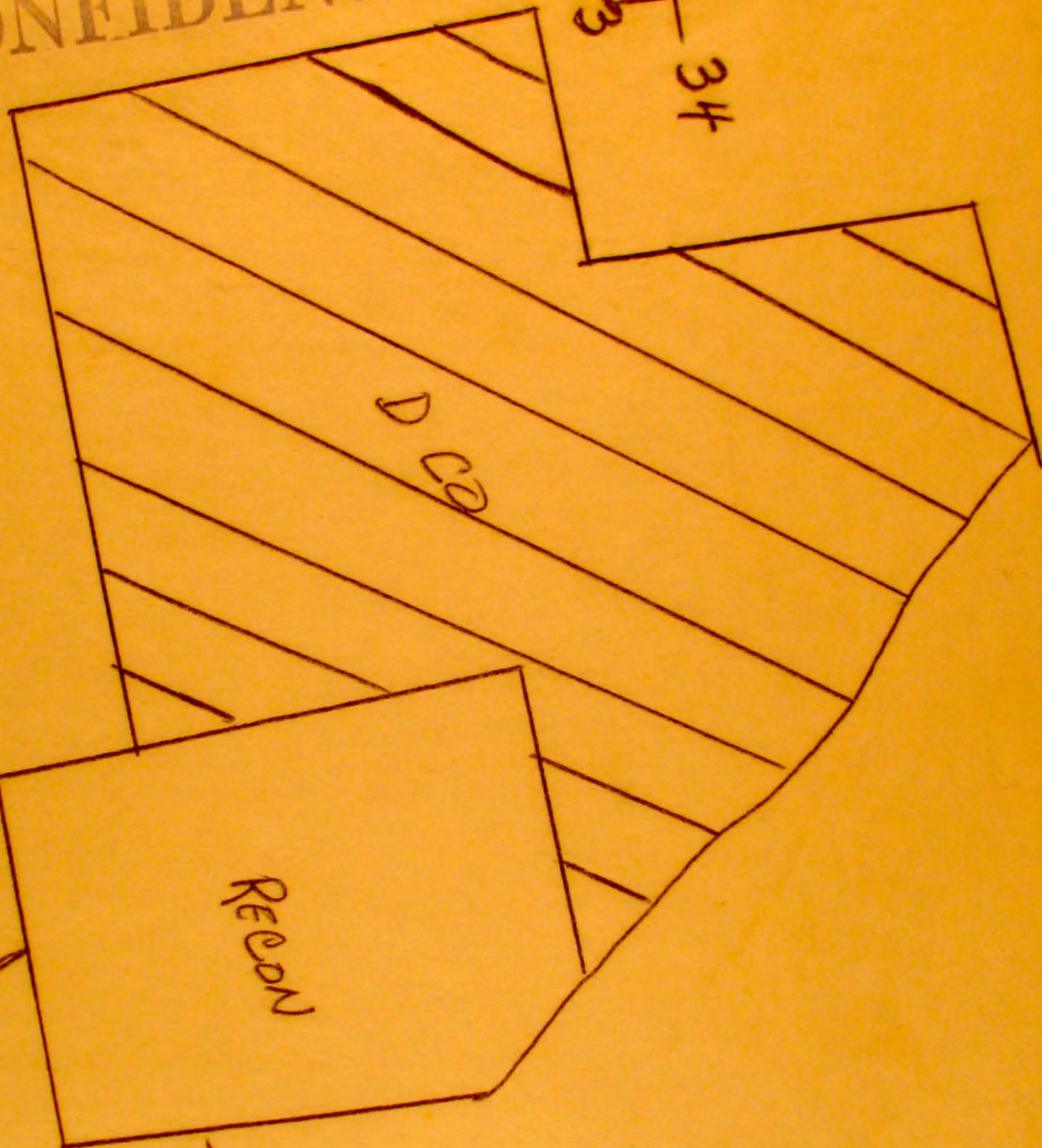
OFFICIAL:

SMITH
S3

CONFIDENTIAL

CONFIDENTIAL

ANNEX 19 TO FRAGO 3 TO OPORD 3-70



13
34

22
28
C CO

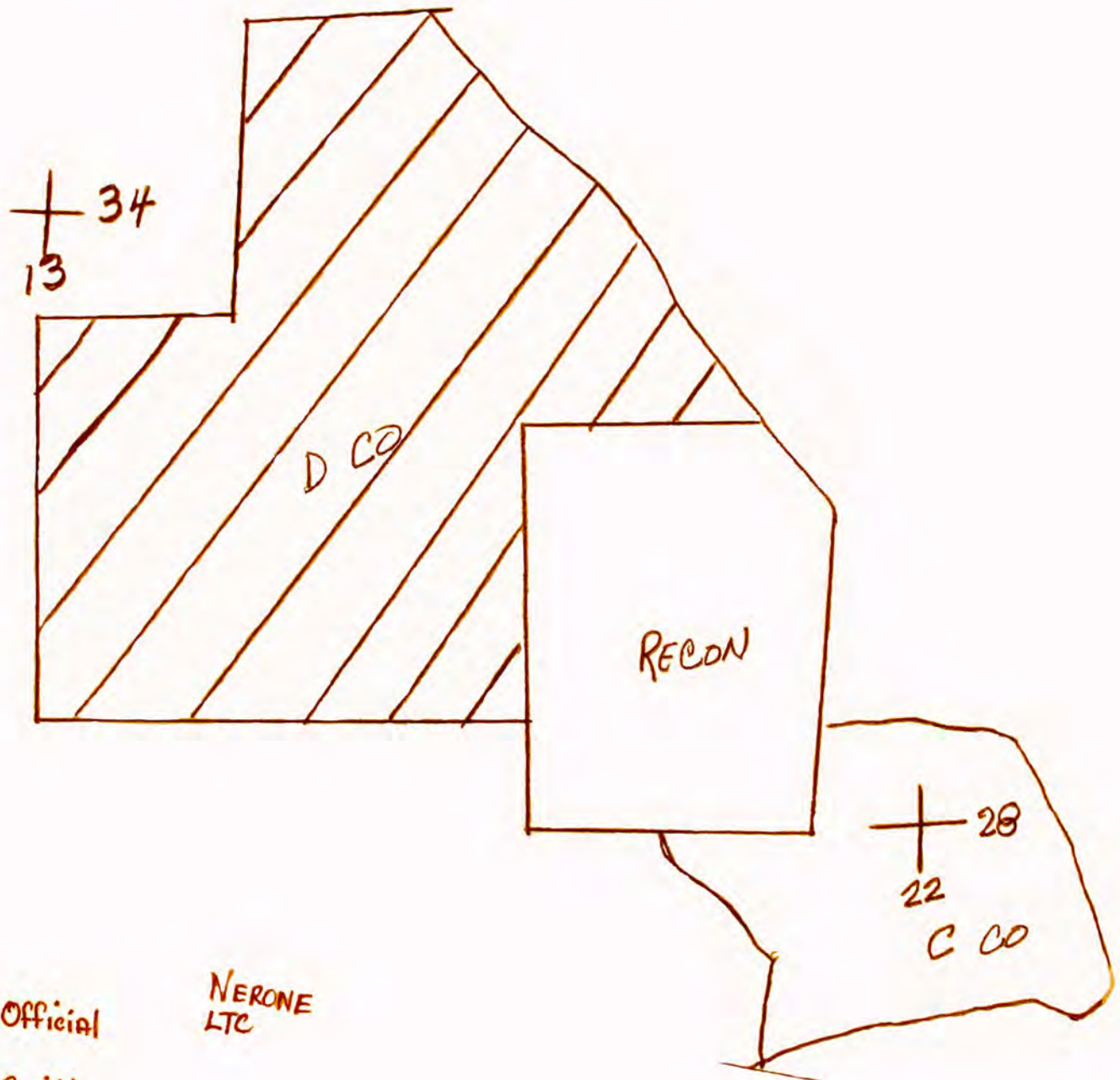
NERONE
LTC

Official

Smith
S-3

CONFIDENTIAL

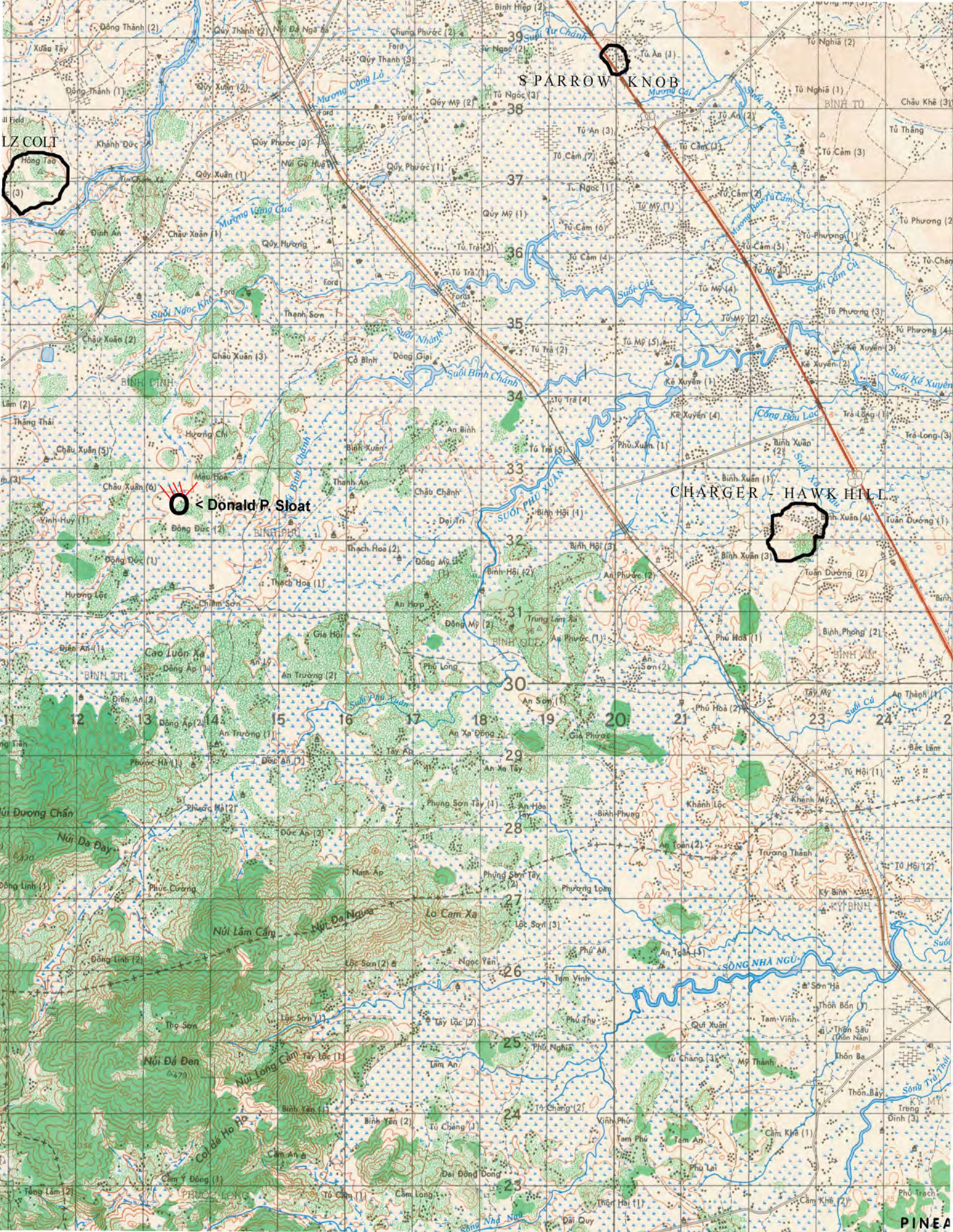
ANNEX A TO FRAGO 3 TO OPORD 3-20



Official

NERONE
LTC

Smith
S-3



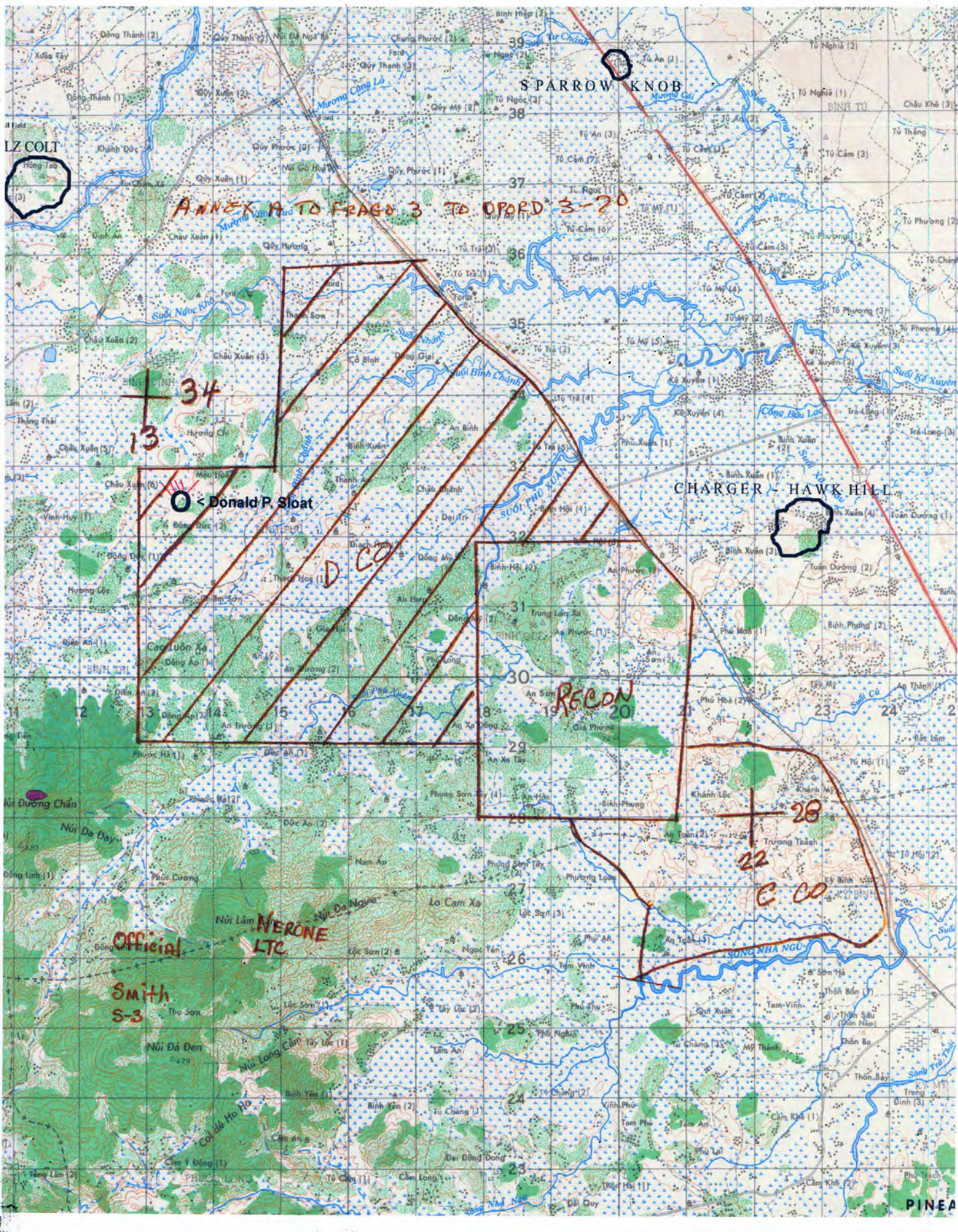
LZ COLT

S PARROW KNOB

Donald P. Sloat

CHARGER - HAWK HILL

PINEA



Copy / of 8 Copies
2d Bn 1st Inf, 196th Bde
LZ HAWK HILL (BT225315) RVN
151830H January 1970

Frags Order 2 to OPORD 03-70

Reference: No Change

1. 2-1 Inf continue current operations.
2. Co B:
 - a. Continue current missions.
 - b. Provide 1 platoon for Arty survey party security mission for period 16 - 20 Jan.
3. Coordinating Instructions:
 - a. Platoon (-) to consist of 15 men with E-6 or above in command daily.
 - b. Report to Bn S-4 building 160830H for transportation.
 - c. Conduct coordination with survey party for transportation on preceeding days.
 - d. Security element will have a minimum of one PRG 25 radio with long whip antenna.
 - e. Maintain radio contact with 2-1 TOC on Bn CMD freq, utilizing platoon call sign.
 - f. Location to be submitted hourly.
 - g. Security element will carry C-rations and adequate water to subsist on daily.
 - h. Security duty to be rotated daily within platoon.
 - i. Conduct link-up with survey party initially at BT378175.

ACKNOWLEDGE:

NERONE
LTC

DISTRIBUTION: Special

OFFICIAL:

SMITH
S3

GROUP 4
DOWNGRADED AT THREE YR INTERVAL
DECLASSIFIED AFTER 12 YRS.

DAILY STAFF JOURNAL OR DUTY OFFICERS LOG (AR 220-346)				Page no 1	No of Pages 5
ORGANIZATION OR INSTALLATION		LOCATION	PERIOD COVERED		
S2/S3 2d Bn 1st Inf		LZ HAWK HILL BT225315	FROM HOUR 0001	DATE 17 Jan 70	TO HOUR 2400 DATE 17 Jan 70
ITEM NO	TIME IN OUT	INCIDENTS, MESSAGES, ORDERS, ETC.	ACTION TAKEN		INI
1	0001	Journal opened			
2	0635	(C) BN S3 to Bde S3: Request political and military clearance to conduct military operations in the following box: upper left BT1929, lower right 2226, time 17/0600 to 20/2400. Cleared OP box political and military BT1929, 1926, 2129, 2126.	S3		JC
3	0800	(C) Bn S3 to Bde S3: Blue Ghost clearance for box: upper left BT1429, lower right BT1825, standard americal rules of engagement.	S3		JC
4	0810	(C) Blue Ghost 24 to S3: On station 0748H, off station 0810H.	S3		JC
5	0820	(C) D Co to S3: While moving on foot with F Trp, 1st plt with attachment from third plt stepped on booby trap at BT135325, resulting in 1 US KIA and 3 US WIA, casualties: KIA: Sloat, Donald P, RN 68, 442-48-8372. WIA: Tipton, Beverly E, RN 74, SSN 406-64-8954, Lewis Dewayne, RN 109, SSN, 478-58-1812, Hacker, William S. RN 21, SSN, 043-36-3195, All had mofable frag wounds all over body.	S3		JC
6	0846	(C) C Co to S3: 3rd plt departing to check grids BT2127 and BT2327.	S3		JC
7	0900	(C) S3 to Recon: Return to Hawk Hill Sweep toward Hawk Hill arrive NLT 1500H.	S3		JC
8	0911	(C) Recon to S3: Departing to patrol to S half of BT2031.	S3		JC
9	0929	(C) C Co to S3: C Co request complete 90 recoilless rifle.	S3		JC
10	0940	(C) D Co to S3: [REDACTED] trap was baseball type hand grenade, trip wire, tripped by point man, 2nd man in line reached down to pick up grenade when it rolled out from under rock, grenade blew up when he picked it up to throw.	S3		JC

TYPED NAME AND GRADE OF OFFICER OR OFFICIAL ON DUTY.	SIGNATURE	GROUP 4 DOWNGRADED AT THREE YEAR INTERVAL DECLASSIFIED AFTER 1978.
------------------------------------------------------	-----------	--------------------------------------------------------------------------

DAILY STAFF JOURNAL OR DUTY OFFICERS LOG (AR 220-346)				Page no 2		No of Pages 5	
ORGANIZATION OR INSTALLATION		LOCATION	PERIOD COVERED				
S2/S3 2d Bn 1st Inf		LZ HAWK HILL BT225315	FROM		TO		
			HOUR	DATE	HOUR	DATE	
			0001	17 Jan 70	2400	17 Jan 70	
ITEM NO	TIME		INCIDENTS, MESSAGES, ORDERS, ETC.	ACTION TAKEN	INL		
	IN	OUT					
11	0945		(C) D Co to S3: Need 5 fatigue shirts for men who used shirts to carry men who were wounded to medic.	S3	JC		
12	0951		(C) D Co to S3: 1st and 2nd plt checking out ville at BT128323.	S3	JC		
13	1000		(C) Bde Arty to S3: Tam K ¹ A/S grid BT17225, time 18/0600 to 18/1800H, clear.	S3	JC		
14	1000		(C) Bde Arty to S3: Calibration target. BT340122, time ASAP to 17/1900, clear 2/1.	S3	JC		
15	1025		(C) C Co to S3: 1st Plt on patrol to grid BT1927 and southern half BT1928.	S3	JC		
16	1037		(C) D Co to S3: 1st and 2nd plt at BT142324.	S3	JC		
17	1100		(C) C Co to S3: Tentative activities: NDP BT185283, amb. BT182284, roving patrol BT193284.	S3	JC		
18	1100		(C) C Co to S3: At BT197275 3rd plt observed 15 VC with pks and wpns dressed in black PJ's Processed Arty on BT197275, 196280 VC evaded E, area will be checked out.	S3	JC		
19	1201		(C) Recon to S3: Closed Hawk Hill.	S3	JC		
20	1330		(C) C Trp to S3: Drop off of A Co complete.	S3	JC		
21	1345		(C) A Co to S3: Location BT184275.	S3	JC		
22	1415		(C) Pacification to S3: 3A-Deleted, 3B-VC, 3C- 5th and 142nd PF plt with D Co, 57 & 58 PF plt with 2 81mm mortar sections from E Co at hill 30. 3D-N/A.	S3	JC		
23	1415		(C) D Co to S3: activities: All night amb BT154327, patrol BT1332, 1333, 1432, 1433, 1532, 1533. Tomorrow activities: Entire Co and 5th and 142d PF plt check grids 1530, 1531, 1532, 1630, 1631, 1632, 1730, 1731, 1732.	S3	JC		
TYPED NAME AND GRADE OF OFFICER OR OFFICIAL ON DUTY.				SIGNATURE			

DAILY STAFF JOURNAL OR DUTY OFFICERS LOG (AR 220-346)				Page no 3	No of Pages 5
ORGANIZATION OR INSTALLATION		LOCATION	PERIOD COVERED		
S2/S3 2d Bn 1st Inf		LZ HAWK HILL BT225315	FROM TO		
			HOUR	DATE	HOUR DATE
			0001	17 Jan 70	2400 17 Jan 70
ITEM NO	TIME IN OUT	INCIDENTS, MESSAGES, ORDERS, ETC.	ACTION TAKEN		INI
24	1520	(C) FDC to S3: Neg 4.2, 81 report.	S3		JC
25	1530	(C) B Co 2nd plt to S3: Location BT336206.	S3		JC
26	1535	(C) E Co to S3: Continue support mission. Be prepared to insert 81mm mortar to C Co NDP on 1 hour notice.	S3		JC
27	1535	(C) S3 to Recon: Continue refit and training, OPCON to Co B on order.	S3		JC
28	1610	(C) F Trp to S3: 2nd plt F Trp will set up a NDP at BT136317 tonight they have a downed Sheridan and are attempting to fix it. F Trp notified of D Co location.	S3		JC
29	1627	(C) B Co to S3: 2nd plt closed Hawk Hill.	S3		JC
30	1645	(C) A Co to S3: A Co's NDP will be BT183275, amb BT186275.	S3		JC
31	1705	(C) Bde S2 to S3: Request Div LRRP box; BT2608 E to 2908 S to 2906 E to 3006 S to 3002 W to 2604, time 18/0600 to 24/2400, clear with 2/1.	S3		JC
32	1720	(C) A Co to S3: Closed NDP BT184276.	S3		JC
33	1730	(C) D Co to S3: At BT139332 2nd sqd 1st plt observed 1 VC/NVA with neg pk or wpr, black clothing, engaged with SA, VC evaded W.	S3		JC
34	1735	(C) C Co to S3: Closed NDP BT188285.	S3		JC
35	1800	(C) F Trp to S3: NDP BT130307.	S3		JC
36	1800	(C) Thang Binh to S3: Night locations: 229302, 235301, 245301, 208303, 205308, 208308, 208311.	S3		J6
37	1815	(C) Bde S3 to Bn S3: Col Meyer said B Co fired into friendly village to NW of Hawk Hill on wire patrol this morning. B Co is checking into it, B Co did not fire, heard shots (9) Lt Rodman was on patrol.	S3		JC
TYPED NAME AND GRADE OF OFFICER OR OFFICIAL ON DUTY.			SIGNATURE		

ORGANIZATION OR INSTALLATION		LOCATION	PERIOD COVERED			
			FROM		TO	
			HOUR	DATE	HOUR	DATE
S2/S3 2d Bn 1st Inf		LZ HAWK HILL BT225315	0001	17 Jan 70	2400	17 Jan 70
ITEM NO	TIME IN OUT		INCIDENTS, MESSAGES, ORDERS, ETC.		ACTION TAKEN	INI
38	1845		(C) Bde S3 to Bn S3: Plan operation to check out and destroy bunkers discovered by 1/1 Cav at the following locations: BT209219, 194264, 186272, 189251, 188236, 195268, 190271. full support from Bde as far as charges, extra birds, etc.		S3	JC
39		1900	(C) S3 to Bde S3: Blue Ghost clearance, time 0800 - 1800H 18 Jan, upper left BT1429, lower right BT1822, standard Americal rules of engagement.		S3	JC
40	1908		(C) Radar to S3: Radar is in operation.		S3	JC
41	1925		(C) Bde S3 to Bn S3: 3/21 locations: BT064293, 070255, 103307. ARVN locations 194193, 191203, 189203, 181205, 189153, 166151, 189157, 224522, 198181, 193185.		S3	RS
42	1950		(C) Bde S3 to Bn S3: The 196th Inf Bde Avn section gets a total of 3 resupply birds daily. 1 from 0800 to 1800H which usually is used to support ARVNs. 2 from 1000-1800H, which are used by each Bn to resupply units in the field. In the past all Bn have requested resupply bird late in the afternoon when blade time is more critical. In the future Bn will schedule the use of their resupply birds between 1000-1800H whenever tactically possible to relieve some of the pressure on the Avn sections.		S3	RS
43	2045		(C) Bde S3 to Bn S3: EOD Tm will be on S4 pad, at 18/0800H.		S3	RS
44	2210		(C) A Co to S3: Change in mission: Conduct detail search for and destroy tunnel complexes vic BT194264, 186272, 189251, 188236, 195268, 190271 and 193227.		S3	RS
45	2245		(C) Bn CO to S3: Request operation area for A and C Co grids 1729 E to 1829 N to 1831 E to 2131 S to 2122 W to 1722 N to 1729		S3	RS

TYPED NAME AND GRADE OF OFFICER OR OFFICIAL ON DUTY.

SIGNATURE

TYPED NAME AND GRADE OF OFFICER OR OFFICIAL ON DUTY.

SIGNATURE *Richard M. Smith*

RICHARD N SMITH, MAJ, ARMOR, S3

CONFIDENTIAL

5-3 FILE

W H W

Copy of 12 Copies
2d Bn 1st Inf, 196th Bde
LZ HAWK HILL (BT225315) RVN
171230H January 1970

Frag Order 4 to OPORD 03-70

1. Co A:
 - a. Conduct recon in force in assigned AO.
 - b. Be prepared to orient operations to South of present AO on order.
2. Co B:
 - a. Continue defense of Hawk Hill.
 - b. Arty survey party security mission remains in effect.
 - c. Be prepared mission for close in recon vic Hawk Hill remains in effect.
3. Co C: Continue recon in force in assigned AO.
4. Co D:
 - a. Continue combined recon in force operations in assigned AO.
 - b. Continue coordination for operations and perimeter defense with F-17th Cav.
 - c. Be prepared to PZ for CA on 1 hours notice.
5. Co E:
 - a. Mortars
 - (1) Continue present support mission.
 - (2) Be prepared to insert 81mm mortar to Co C NDP on 1 Hours notice.
 - b. Recon:
 - (1) Continue refit and training.
 - (2) OPCON to Co B on order.

Page 1 of 2 Pages

DOWNGRADED AT THREE YEAR INTERVALS
DECLASSIFIED AFTER TWELVE YEARS

CONFIDENTIAL

CONFIDENTIAL

Frag Order 4 to OPORD 03-70

6. Coordinating Instructions:

a. Submit tentative NDP, ambush sites, night patrol activities NLT 1200 hrs daily.

ACKNOWLEDGE

ANNEX A (Operation overlay)

NERONE
LTC

DISTRIBUTION: Special

OFFICIAL:

SMITH
83

CONFIDENTIAL

CONFIDENTIAL

Copy No 5 of 12 copies
2nd Bn, 1st Inf
LZ Hawk Hill, RVN
171500 January 1970

*J. de
Wann*

Annex A (Intel) to OPRD 4-70
Reference: Map, TAN KY, 1:50,000

1. SUMMARY OF ENEMY SITUATION:

In recent months, the terrain vic Hill 251 has been used extensively by the enemy. The heavily vegetated mountains and slopes have been developed as observation points, forward base camps and staging areas; the natural routes of movement, e.g., the valleys leading from the Nui Da Den (BT134246) and the Col de Ho Ho (BT140238) areas into the lowlands, have been heavily traveled. The areas dominated by Hill 251 have served as indirect fire launch sites; hamlets in the adjacent valleys, especially Loc Son (1), have been used as VC/NVA coordination meeting sites (See: Appendix 1: Summary of Incidents)

Enemy strength in the area is variable, depending upon the activity of US/ARVN units in the lowlands and the current phase of enemy operations. During the period, 1 - 14 January 1970, a definite pre-Tet build-up in the region has been discernible and is expected to continue through the projected high point of enemy activity. Total strength at present is at least battalion size, consisting of elements of several units. Recent agent reports have indicated the presence of a battalion of the 31st (AKA 3rd) NVA Regiment in the area with attached sapper units and LF support elements.

Control of the area provides the enemy with several significant capabilities, i.e., (1) to conduct rocket and indirect fire attacks from secure positions against Allied installations and units in the lowlands; (2) to mass forces in protected areas for night assaults on NDP's or installations; (3) to obtain resupply from lowland villages, using the valleys to the north and south of Hill 251 as transportation routes; (4) to monitor US/ARVN movements in the AO and to conduct visual reconnaissance preparatory to night assaults. Opposition to US presence on Hill 251 is probable and should increase in intensity as our interdictory efforts are felt.

Enemy forces appear to be sufficiently well-fed and motivated, especially for Tet period activities. Equipment and weapons are available and well-maintained. Stockpiling has taken place in the area in recent weeks. The enemy is known to possess mortars, recoilless weapons, 122 mm rockets, machine guns, RPG's and grenades in addition to small arms. Communications is primarily by courier although the 31st Regiment has a radio, wire, and pyrotechnic capability. Radio intercept teams could be operational within the area.

2. ESSENTIAL ELEMENTS OF INFORMATION

a. EEI: What are the patterns of movement and activity of the enemy forces operating in the area dominated by Hill 251, especially in reference to staging areas, routes of transport, cache locations, and coordination sites? Is the enemy massing? If so, in what areas and with what forces?

b. Other intelligence requirements (not in priority):

- (1) What are the characteristics of tunnels found in the area?
- (2) What are the supply and consumption levels of salt for the enemy?
- (3) Does the enemy demonstrate an extensive wire capability?
- (4) Is there any evidence of the use of a new multi-purpose SA weapon?

CONFIDENTIAL

CONFIDENTIAL

ANNEX A to Frag Order 4 to OPORD 03-70

ACKNOWLEDGE

13
34

NERONE
LTC

DISTRIBUTION: Special

OFFICIAL

SMITH
S3

F-17
2-1
D

D-C

C
A

D
A

+28
22

CONFIDENTIAL

ANNEX A to Frag Order 4 to OPORD 03-70
ACKNOWLEDGE

NERONE
LTC

DISTRIBUTION: Special

OFFICIAL

SMITH
S3

34
13

F-17
2-1
D

D C

D
A

C
A

28
22

CONFIDENTIAL

(Anx A (Intel) to OPORD 4-70 - 2/1 Inf)

(5) What is the density of AA positions found in the area ? Are there many of recent construction or use ?

(6) What is the orientation of suspected rocket launch sites found vic Hill 251 ?

(7) What is the apparent effectiveness of recent CS drops in the valleys adjacent to Hill 251 ?

3. INTELLIGENCE ACQUISITION TASKS:

a. Recon platoon / outpost company:

(1) Report as obtained any and all information regarding the size, activity, unit, terrain utilization and/or equipment of the enemy per SOP for intelligence spots.

(2) Provide necessary support for the implantation and monitoring of sensor systems assigned to Outpost Legionnaire, and insure the effective integration of all attached systems.

(3) Conduct complete evaluation of the effects of all artillery, indirect fire and air strikes as soon as feasible.

(4) Interrogate and extract, if necessary, all suspect personnel within the operational area.

(5) Conduct thorough de-briefing of all reconnaissance and combat patrols.

4. MEASURES FOR HANDLING PERSONNEL, DOCUMENTS, AND MATERIAL:

a. Tag with complete data; process through S-2 per SOP.

5. DOCUMENTS AND/OR EQUIPMENT REQUIRED:

a. SOP distribution of map, Tam Ky, 1:50,000.

b. Sensors, surveillance radar equipment and integrated observation system to be issued as available.

6. COUNTERINTELLIGENCE:

a. All units stress maximum use of SECURE for radio traffic, and strict adherence to correct procedures, to include authentication, for all other transmissions.

b. Sound/light discipline to be insured at all times.

7. REPORTS AND DISTRIBUTION: SOP

8. MISCELLANEOUS:

a. Requests for aerial photo missions processed through S-2.

b. Aerial reconnaissance coordinated through S-3 Air.

Appendices: 1 - Terrain gradient analysis

2 - VR overlay

3 - Summary of incidents

NERONE

LTC

OFFICIAL:

Gardner
GARDNER
S2

CONFIDENTIAL

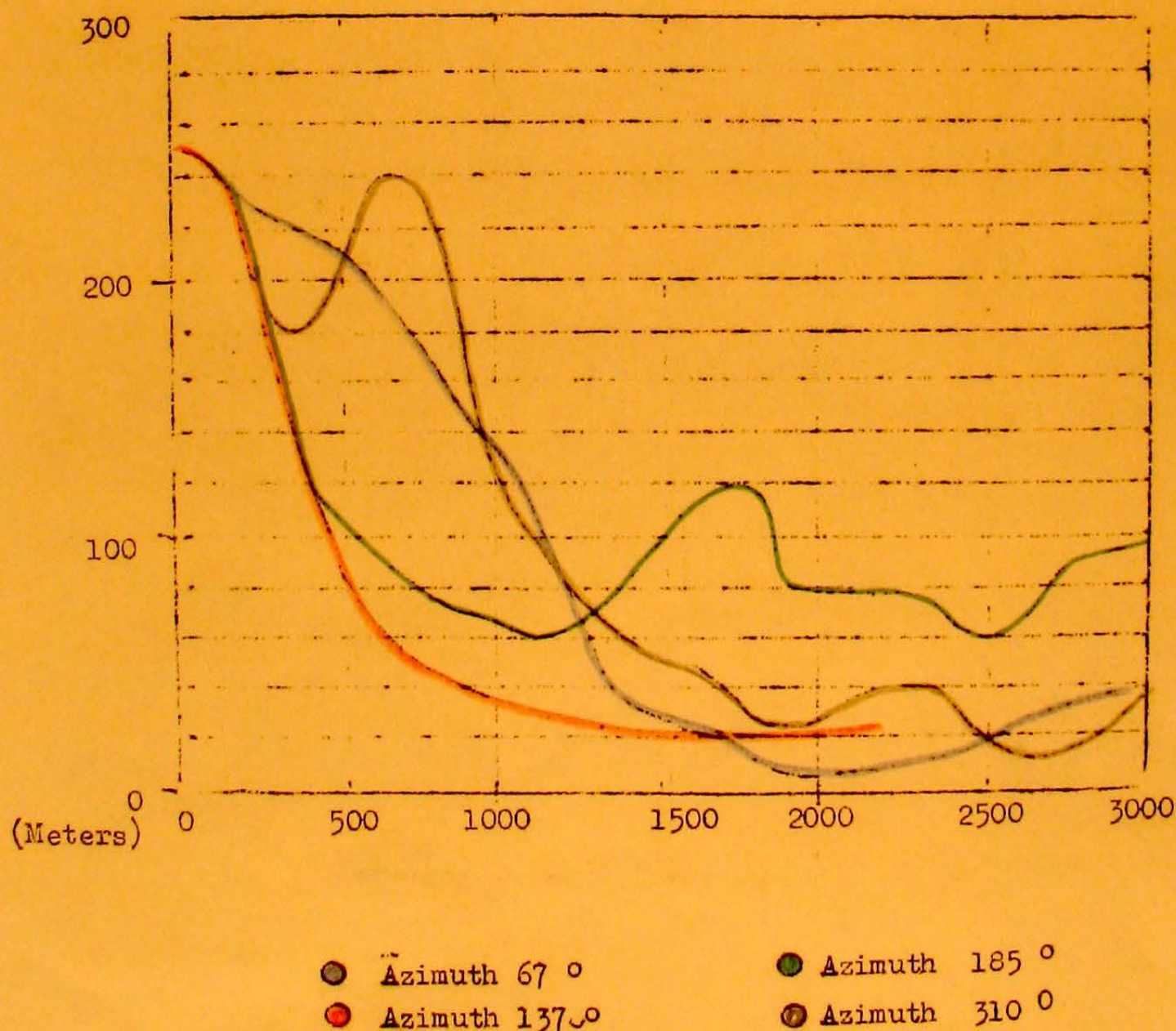
CONFIDENTIAL

Appendix 1 (Terrain gradient analysis) to Annex A (Intel) to OPORD 4-70
Reference: Map, Tam Ky, 1:25,000

1. SUMMARY:

Fields of observation from Hill 251 itself are excellent in all directions and are improved by location on the hill 800 meters to the east-northeast of the Hill 251 benchmark. It is on this easternmost knob of the Hill 251 complex that Outpost Legionnaire is planned. From this vantage point, an observer has line-of-sight coverage of the lowlands to the east, the valleys to the north and south and the higher mountains to the west.

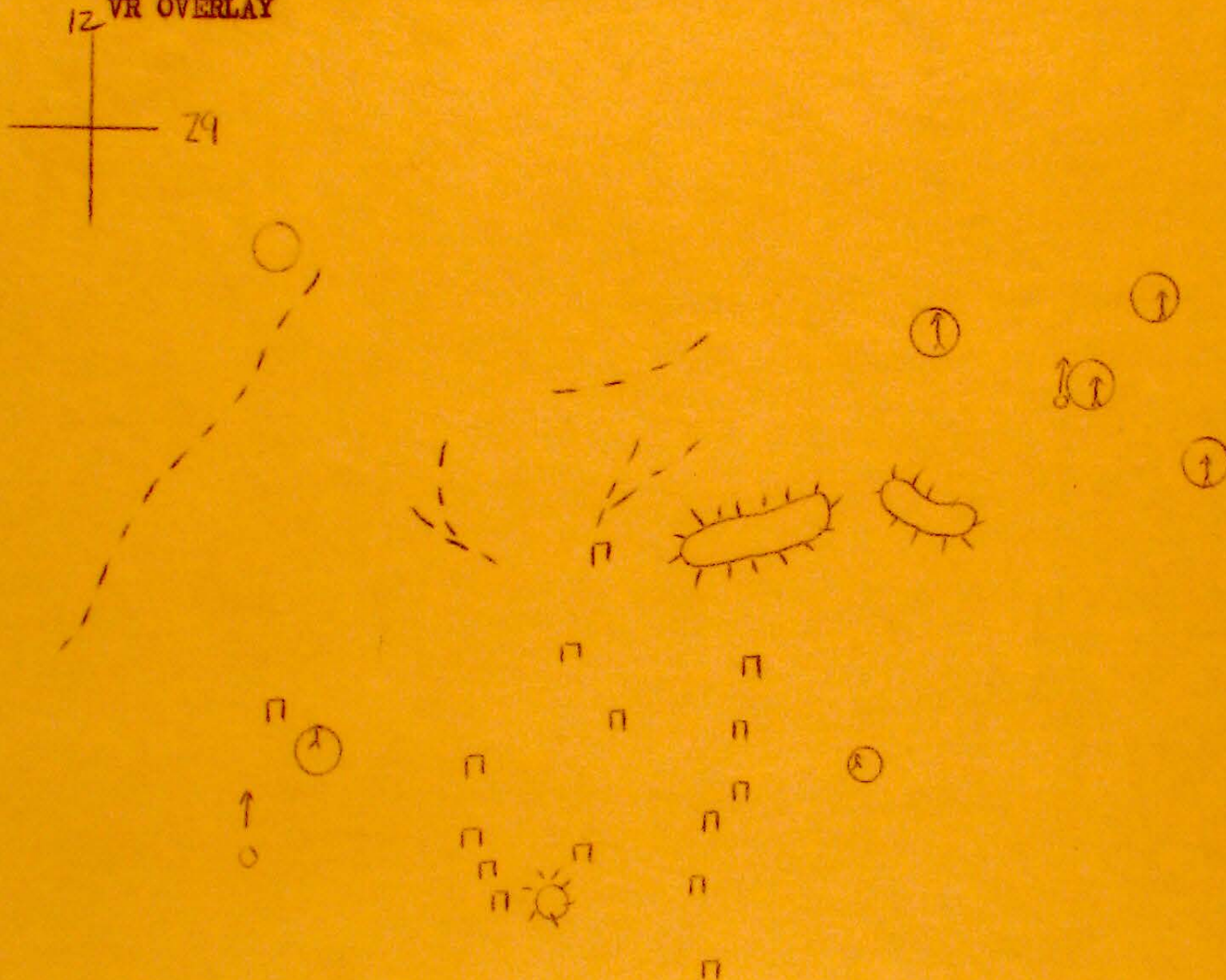
To demonstrate this extent of visibility graphically, the following slope analysis diagrams are presented. They plot horizontal distance in one thousand meter increments and vertical elevation in one hundred meter increments for each of four selected azimuths:



CONFIDENTIAL

CONFIDENTIAL

(Appendix 2 to Annex A (Intel) to OPORD 04-70)
References: Map, Tam Ky, 1:50,000
VR OVERLAY



LEGEND

- Trail Activity (Light)
- Mortar Position
- Fortified Area
- Foxhole
- AA/AW Position
- Cultivated Area

NERONE
LTC

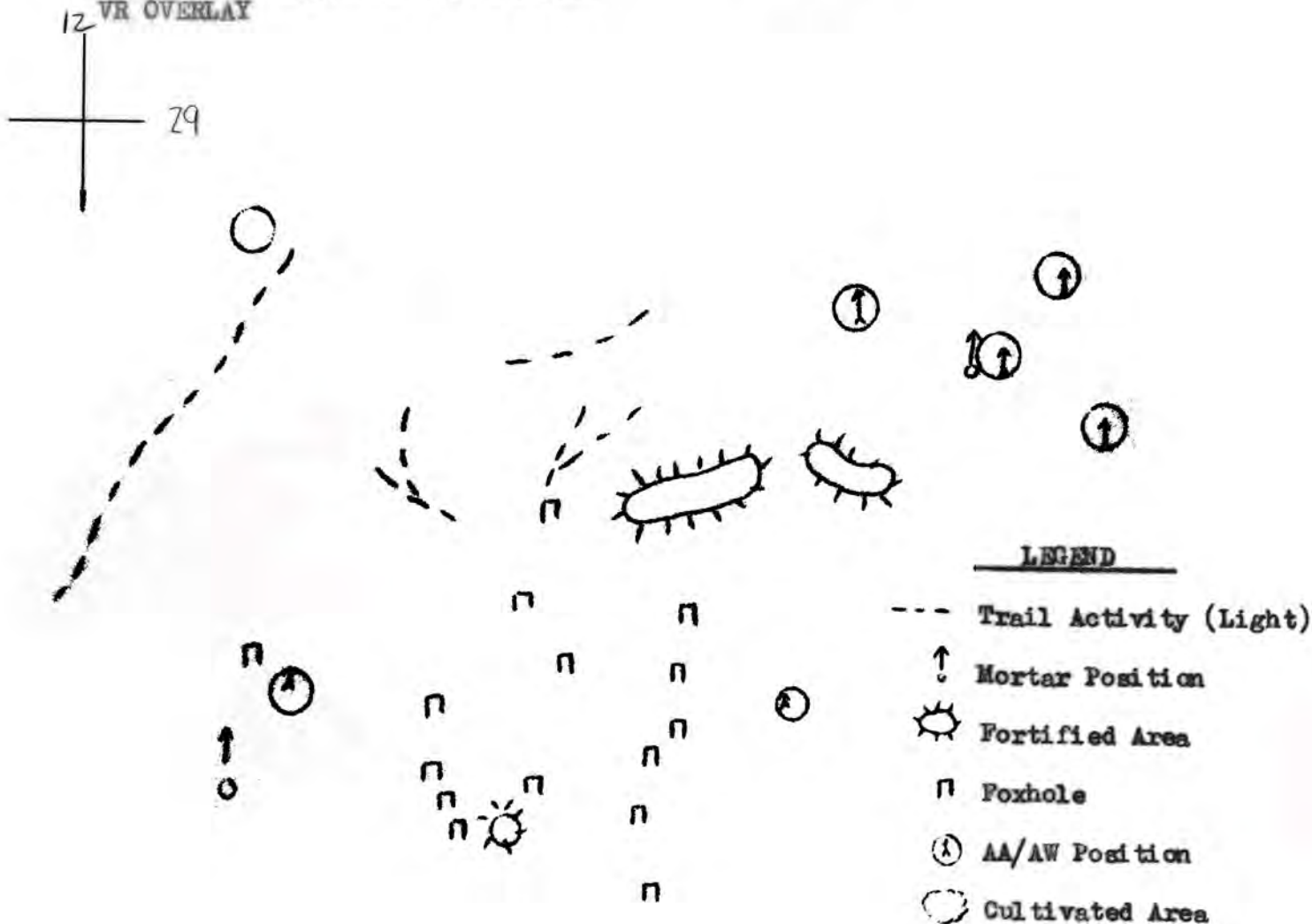
Official
GARDNER
Gardener
S-2

GROUP 4
DOWNGRADED AT THREE YR INTERVAL
DECLASSIFIED AFTER 12 YRS.

CONFIDENTIAL

CONFIDENTIAL

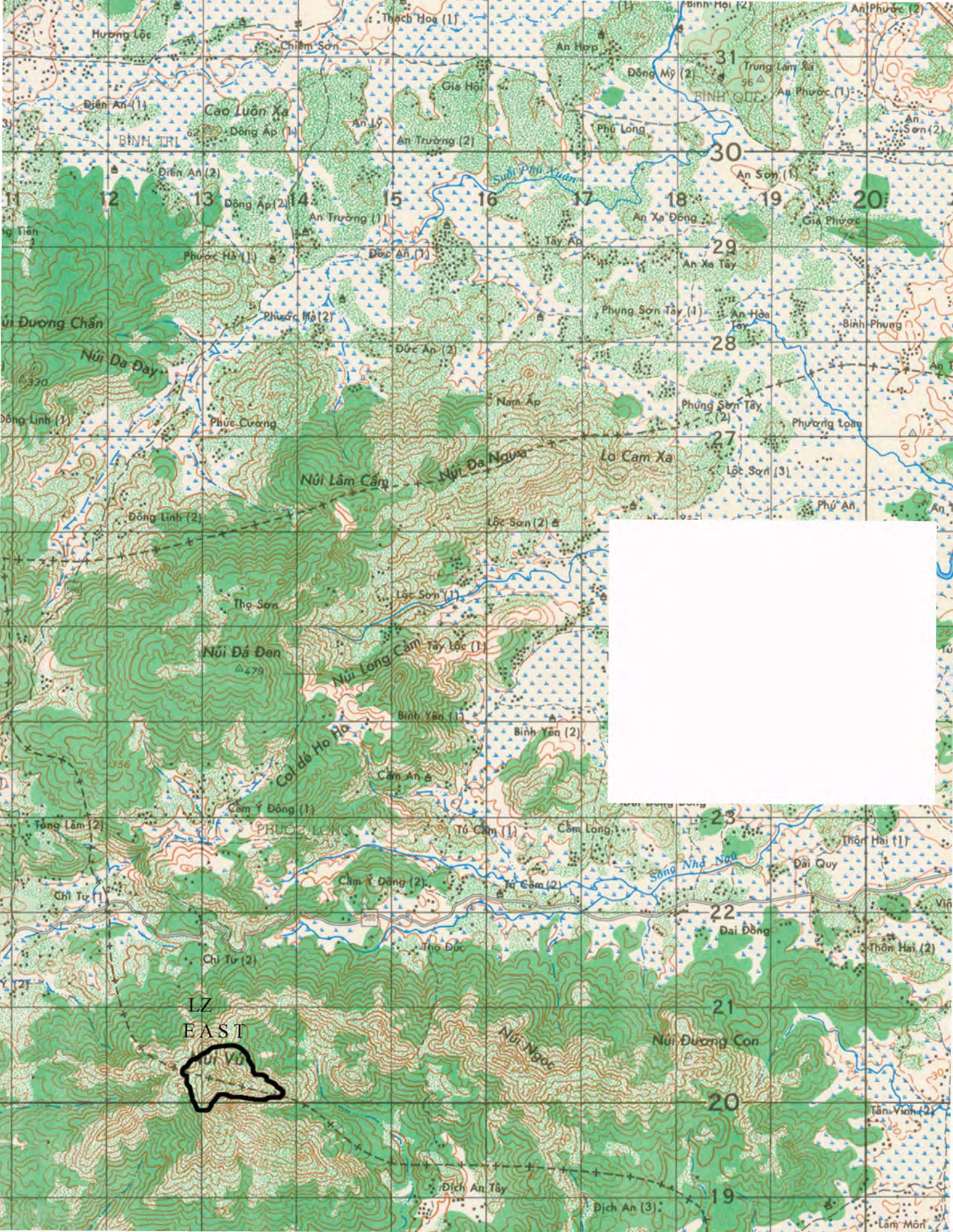
(Appendix 2 to Annex A (Intel) to OPORD 04-70)
Reference: Map, Tan Ky, 1:50,000
VR OVERLAY



NERONE
LTC

Official
GRADNER
Gardener
S-2

GROUP 4
DOWNGRADED AT THREE YR INTERVAL
DECLASSIFIED AFTER 12 YRS.



VR. OVERVIEW

Trail Activity (Light)

Mortar Position

Fortified Area

Foxhole

① AA/AW Position

Cultivated Area

LZ
EAST

NERONE

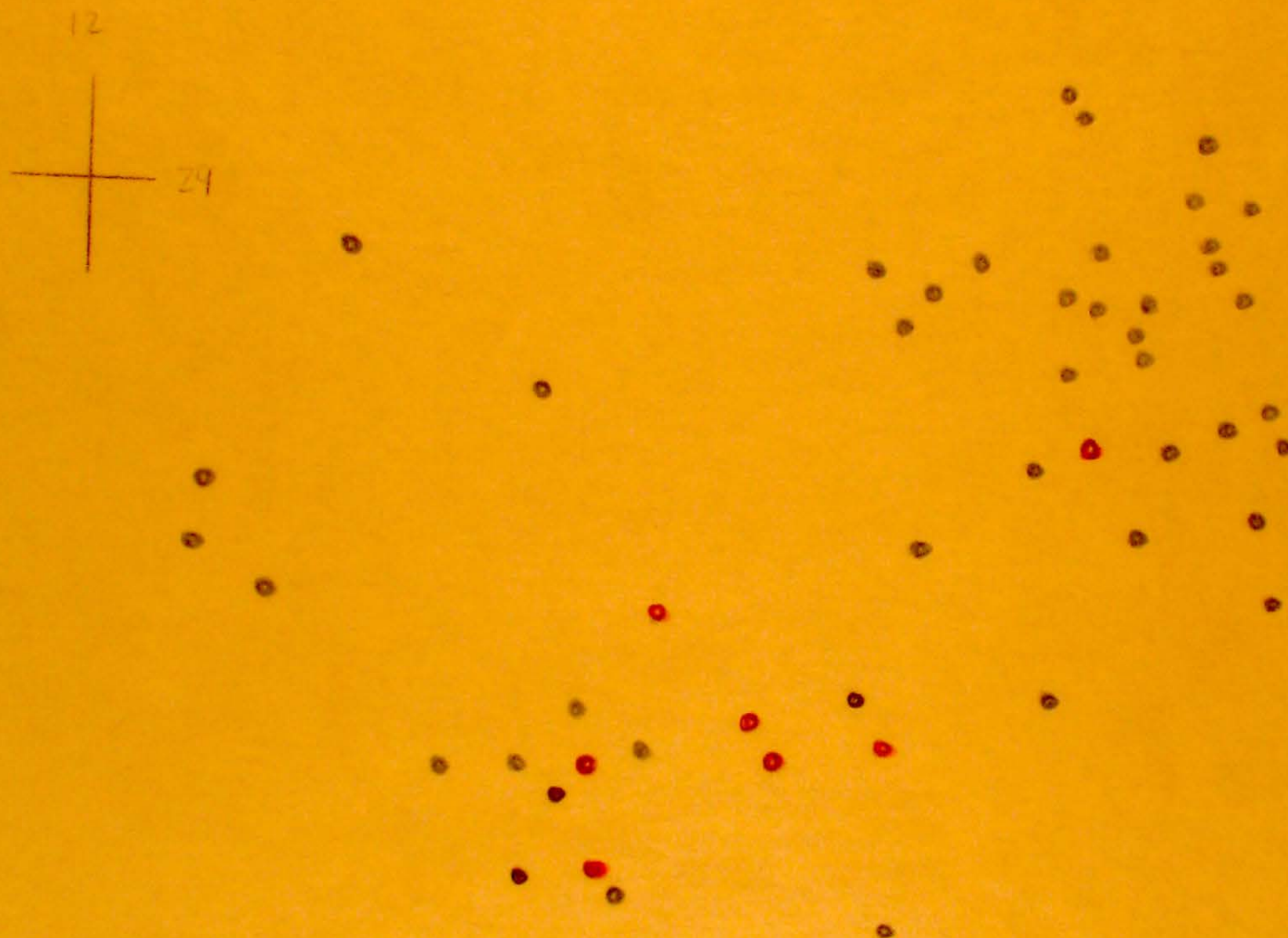
Ước lượng

Official
GRADNER
TORNADO
8-2

Ngũ Dương Côn
B. GROUP 4
DOWNWARD 4.1-4.3 YR INTERVAL
DUE TO RISE AFTER 12 YRS

CONFIDENTIAL

(Appendix 3 to Annex A (Intel) to OPORD 4-70)
Reference: Map, Tam Ky, 1:50,000



LEGEND

- Rice Cache
- Weapons Cache
- Contact/Sighting

NERONE
LTC

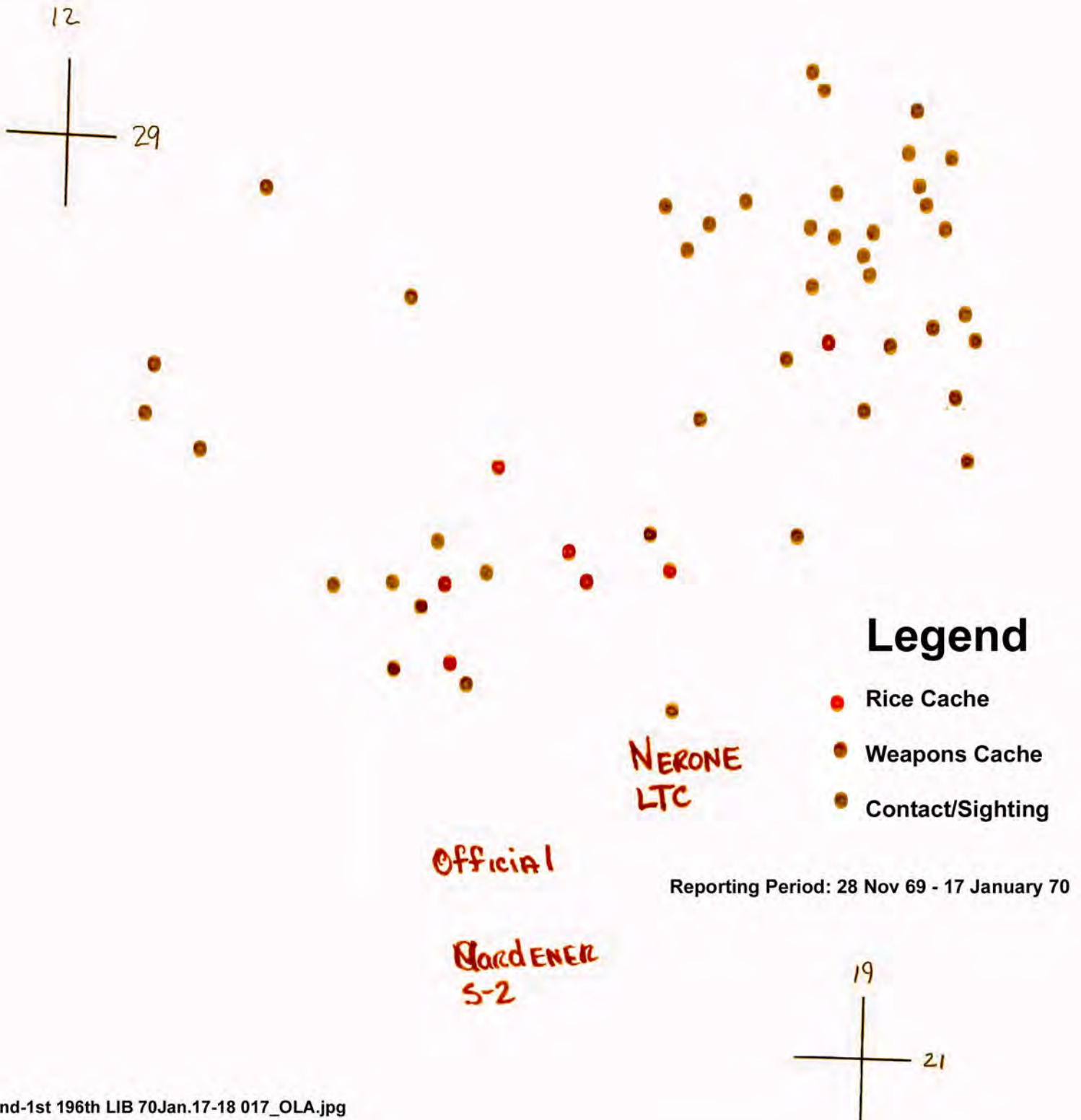
Official

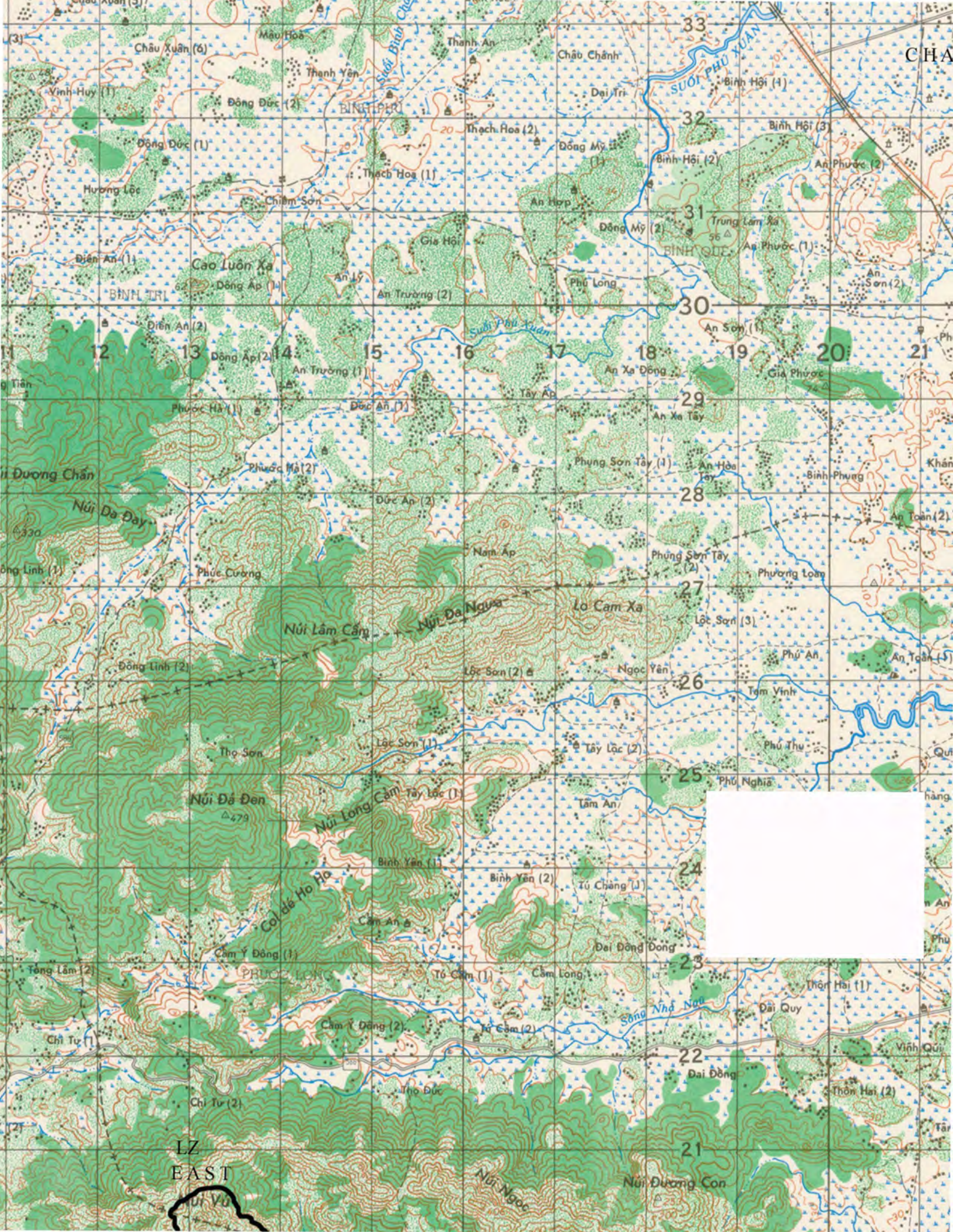
Reporting Period: 28 Nov 69 -
17 Jan 70 **WARDENER**
S-2

GROUP 4
DOWNGRADED AT THREE YR INTERVAL
DECLASSIFIED AFTER 12 YRS.

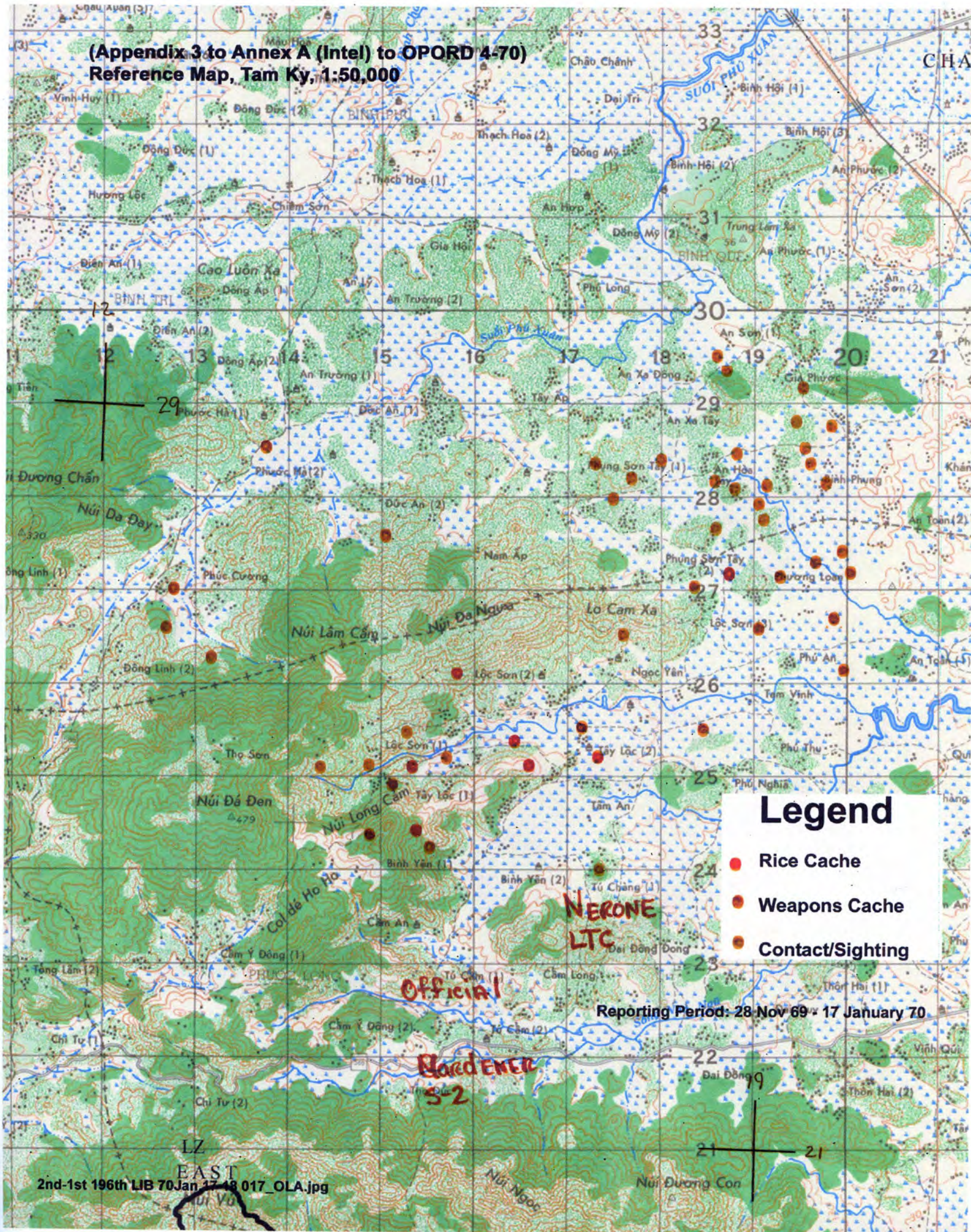
CONFIDENTIAL

(Appendix 3 to Annex A (Intel) to OPOD 4-70)
Reference Map, Tam Ky, 1:50,000





(Appendix 3 to Annex A (Intel) to OPORD 4-70)
Reference Map, Tam Ky, 1:50,000



DAILY STAFF JOURNAL OR DUTY OFFICERS LOG (AR 220-346)						Page no		No of Pages	
ORGANIZATION OR INSTALLATION			LOCATION		PERIOD COVERED				
S3/S2 2d Bn 1st Inf			LZ HAWK HILL BT225315		FROM		TO		
					HOUR	DATE	HOUR	DATE	
					0001	18 Jan 70	2400	18 Jan 70	
ITEM NO	TIME		INCIDENTS, MESSAGES, ORDERS, ETC.			ACTION TAKEN		INITIALS	
	IN	OUT							
1	0001		Journal opened.						
2	0005		(C) Tam Ky to S3: PF's made contact at BT244270 while in amb site, called for CAP Tm 116. CAP 116 made contact with 10 VC at BT244260 (1000M S) VC evaded successfully SW, neg friendly casualties.			S3		JC	
3	0400		(C) D Co to S3: 1 trip flare went off just outside perimeter wire on SE side, illum was fired. 2 chicom were thrown. One was a dud the other rolled into foxhole injuring 2 EM. They saw 3 individuals in black PJ's evaded SW, engaged with SAF, M-60, M-79 fired Arty illum, wire check was made, no indication that anyone got in.			S3		JC	
4	0430		(C) D Co to S3: Dust off requested 0404H complete 0436H, casualties: RN 130, PFC Webery, wounds in left foot and elbow (minor) RN 100, PFC Jackson, left thigh and foot, were taken to 91st evac in Chu Lai.			S3		JC	
5	0741		(C) Helix 15 to S3: On station 0715H, off station 0741H.			S3		JC	
6	0800		(C) D Co to S3: Follow up to D Co spot 18/0400H Jan. Further check of area revealed 3 unexploded Chicoms near foxhole where one exploded and 1 unexploded outside wire. Distance from concertina to foxhole is 37M, as paced by Co CO.			S3		JC	
7		0900	(C) S2 to line Co: (especially emphasized for A and C in current operations) All major tunnel systems found and destroyed will be described in detail over radio. Actual sketches of the [redacted] will be made and extracted to Ha [redacted] (show dimensions, features, etc) to S2. All tunnels found will be blown.			S3		RG	
8		0905	(C) Bn S2 to Bde S2: APD sniffer mission 17 Jan 1300H-1500H, area upper left 2814, lower right 3604, readings at 353128, 364106, 368103.			S3		JC	
TYPED NAME AND GRADE OF OFFICER OR OFFICIAL ON DUTY.						SIGNATURE			


DAILY STAFF JOURNAL OR DUTY OFFICERS LOG (AR 220-346)					Page no	No of Pages
ORGANIZATION OR INSTALLATION		LOCATION		PERIOD COVERED		
S2/S3 2d Bn 1st Inf		LZ HAWK HILL BT225315		FROM		TO
				HOUR	DATE	HOUR
				0001	18 Jan 70	2400 18 Jan 70
ITEM NO	TIME IN	TIME OUT	INCIDENTS, MESSAGES, ORDERS, ETC.	ACTION TAKEN	INITIALS	
9	0925		(C) A CO To S3: 1st and 2nd plt departed on patrols to check following grids: 186272, 190271, 194264, and 195268.	S3	JC	
10	0945		(C) Bn S3 to Bde S3: Blue Ghost VR request upper left BT2414, lower right BT2712, time 19/0800 to 19/1800, cleared 2/1.	S3	JC	
11	1000		(C) Bde Arty to S3: Tam Ky request A/S grids: BT137227, 250145, 215255, time 19/0600 to 19/1800, cleared by Cpt Sherrard.	S3	JC	
12	1020		(C) Bde S2 to Bn S2: URI's BT267121, 146282.	S3	JC	
13	1115		(C) S2 to Bde S2: IR and sniffer missions requested by 2/1 Inf. Boundries upper left BT1228, lower right BT1723, time early evening 19 Jan. Prox of 2/1 Inf, 1500M east clear with 3/21, Bde will run a sniffer mission covers this area.	S3	JC	
14	1200		(C) Bde S3 to Bn S3: Received neg clearance for 2/1 sniffer mission. Bde will run a sniffer mission upper left BT0828, lower right BT1723, time 18/1800H, maj Smith.	S3	JC	
15	1300		(C) Helix 19 to S3: On station 1300H, off station, 1308, A/S on BT149248, cleared with Maj Smith and Thang Binh, Helix informs that weather is too bad and will not be able to put A/S in.	S3	JC	
16	1320		(C) D Co to S3: Night activities: LP/amb BT1533, 1432, 1532, 1332, 1432.	S3	JC	
17	1350		(C) Bde Arty to S3: Tam Ky A/S grid 214256, immediate to 1800H 18 Jan, cleared 2/1.	S3	JC	
18	1405		(C) A Co to S3: [REDACTED] departing on patrol checking grid BT186273.	S3	JC	
19	1410		(C) C Co to S3: NDI BT188298, tentative night amb BT187296.	S3	JC	
TYPED NAME AND GRADE OF OFFICER OR OFFICIAL ON DUTY.				SIGNATURE		

DAILY STAFF JOURNAL OR DUTY OFFICERS LOG (AR 220-346)				Page no	No of Pages
ORGANIZATION OR INSTALLATION		LOCATION	PERIOD COVERED		
			FROM	TO	
S2/S3 2d Bn 1st Inf		EZ HAWK HILL BT225315	HOUR 0001	DATE 18 Jan 70	HOUR 2400 DATE 18 Jan 70
ITEM NO	TIME		INCIDENTS, MESSAGES, ORDERS, ETC.	ACTION TAKEN	INITIALS
	IN	OUT			
20	1415		(C) Bde S3 to Bn S3: Bde requirement: Provide 1 plt (25-30 men) to be OPCON 1/1 cav effective 19/0800H. Will be OPCON for approx 5 days will initially be CA by hook to Blue Ghost pad, Tam Ky where they will receive briefing, then will be OPCON to one of the Cav Trps, Operations will initially be in pineapple forest area then west and southwest of pineapple forest. S3 recommend plt from C Co.	S3	JC
21	1440		(C) Blue Ghost 24 to S3: On station 1430H, off station 1510H.	S3	JC
22	1500		(C) C Co to S3: At BT198284 center of mass of hamlet destroyed 10 tunnel complexes. Used 11 cratering charges to destroy. Largest tunnel led from the floor, doorway was camouflaged had 2 rooms in opposite directions, rooms 8x6x4 ft and 10x6x4 ft, had escape exits 18 ft from hootch, reinforced with logs. Rooms had cooking utensils dishes and pots. Next tunnel led from hootch had camouflaged entrance led to large sleeping area 5x6x10 ft, reinforced with engine stakes, next tunnel led from hootch had 2 entrance way. E side of hootch was 3' long and 8' deep led to small room 4x3 ft with another tunnel 4-5' long to a lower level 3' deeper. this led to another room 5x3'. W side of hootch tunnel 4' long and 4' deep to room 4'x3' with an adioint room 5' away that was 3'x4'. Two feet before last room an escape tunnel led to back along trail camouflaged with straw. Next tunnel led from inside hootch 8' underground to room 3x5' with another tunnel 4' which solits in 3 different directions. Tunnel 7' to left and 12' to right with exit in banks camouflaged with straw. Other tunnel led 10' to top with escape exit to trail camouflaged with woven basket. Next tunnel led from hootch 9' deep 20 ft long with dimensions 4x5 led from hootch to trail with end camouflaged with straw. Next tunnel found on bank of trail	S3	JC

TYPED NAME AND GRADE OF OFFICER OR OFFICIAL ON DUTY.	SIGNATURE
	<i>[Signature]</i>

DAILY STAFF JOURNAL OR DUTY OFFICERS LOG (AR 220-346)				Page no	No of Pages
ORGANIZATION OR INSTALLATION		LOCATION	PERIOD COVERED		
			FROM	TO	
S2/S3 2d Bn 1st Inf		LZ HAWK HILL BT225315	HOUR 0001	DATE 18 Jan 70	HOUR 2400 DATE 18 Jan 70
ITEM NO	TIME		INCIDENTS, MESSAGES, ORDERS, ETC.	ACTION TAKEN	INITIALS
	IN	OUT			
22	cont		<p>openning not camouflaged, looked like spider hole 3' deep with sharp turn to left to room 10'x4'. Tunnel inside structure with an above ground bunker of under block 6'x 9'. Inside above ground bunker was a camouflaged entrance to room 8' x 6' reinforced with wooden logs. Next tunnel entrance 2' wide from back of trail 2' deep with tunnel making sharp turn to tunnel 25' long 5' high. 3' wide, ne exit no camouflage. Next tunnel led from beside a hootch entrance not camouflaged 3' x 3' led to large room 9' x 6' reinforced, with logs. Next tunnel led from bank of trail entrance 3x3' led vertically 4' to tunnel that cuts sharply along bank 20x3x5' no escape exit. Tunnels described from N to S and of hamlet. found, when they came through hamlet last night there were 8-10 cattle today they found no cattle. Fires were burning in hamlet this morning. Found ordinary VN clothing and black PJ's and shirts no weapons. No sign of recent use within last week. Tunnels were not dug within last month and reinforced ones were probably not dug within 3 months. Two cratering charges used on first tunnel described. if fire Arty on hamlet their will be no place to hide.</p>	S3	JC
23	1530		<p>(C) Blue Ghost 24 to S3: At BT173227 spotted 2 hootches with military clothing and ponch outside, engaged with WP, two hootches destroyed. At BT175227 spotted numerous empty ammo cans and military uniforms. no action taken. at BT143253 1 MAM evading 20 yrs old dressed all black., in triple canopy jungle, did not engage.</p>	S3	JC
24	1540		<p>(C) FDC to S3: 4,2 report: 1-12, 2-0, 3-12, 4-24, 5-0, 6-24, 7-24, 8-0, 9-0, 10-0, 81; 1-0, 2-0, 1600H; 1-12, 2-24.</p>	S3	J6
25	1545		<p>(C) Pacification to S3: 3A-Deleted, 3B-NC, 3C-57 and 58 PF plts Hill 30 with 2 MM sections. 2 PF plts with D Co. 3D-N/A.</p>	S3	JC
TYPED NAME AND GRADE OF OFFICER OR OFFICIAL ON DUTY.			SIGNATURE		

DAILY STAFF JOURNAL OR DUTY OFFICERS LOG (AR 220-346)				Page no	No of Pages
ORGANIZATION OR INSTALLATION		LOCATION	PERIOD COVERED		
S2/S3 2d Bn 1st Inf		LZ HAWK HILL BT225315	FROM HOUR 0001	TO DATE 18 Jan 70	TO HOUR 2400
ITEM NO	TIME		INCIDENTS, MESSAGES, ORDERS, ETC.	ACTION TAKEN	INI
	IN	OUT			
26	1620		(C) Maj McGondel to S3: Bde agrees to pick up 1 plt C Co from PZ at 19/0800H, will be taken to 1/1 Cav AO.	S3	JC
27	1627		(C) B Co to S3: B Co's 2nd plt enroute to Hawk Hill.	S3	JC
28	1640		(C) Bde Arty to S3: Tam Ky request A/S BT208228, ASAP to 18/1800H, clear,	S3	JC
29	1650		(C) C Co to S3: C Co closed NDP BT189298.	S3	JC
30	1700		(C) A Co to S3: Closed ND BT183275.=	S3	JC
31	1725		(C) S3 DO to S3: Freq for 3rd plt C Co C/A 59.85, PZ control P79, PZ BT186300, 33 men, OPCON to 1/1 Cav.	S3	JC
32	1730		(C) Bde S2 to S3: URI BT221136.	S3	RS
33	1740		(C) S3 to S1: Called request on casualty clerk to be attached 1/1 Cav for the time the 3rd plt C Co attached to 1/1 Cav to report our casualties to this unit. S1 said they cannot respond but will coordinate directly with S1 1/1 cav.	S3	RS
34	1805		(C) C Co to S3: Night activities: Amb BT193295, NDP BT190298.	S3	JC
35	1810		(C) Bde S3 to Bn S3: 23rd med chopper pad is off limits, violaters will be held by MP's.	S3	JC
36	1825		(C) Thang Binh to S3: Night locations: 200323, 204328, 206309, 206305, 206308, 209303, 230302, 235301, and 243299.	S3	JC
37	1900		(C) Radar to S3: Radar in operation.	S3	JC
38	1930		(C) C Co to S3: C Co sprung it's amb at BT193295, observed 1 VC with pk and wpn engaged with SA; VC evaded E, dropped hat and meat he was carrying. Checked area out neg other findings, will check in morning		
TYPED NAME AND GRADE OF OFFICER OR OFFICIAL ON DUTY.			SIGNATURE		

DAILY STAFF JOURNAL OR DUTY OFFICERS LOG (AR 220-346)					Page no	No of Pages
ORGANIZATION OR INSTALLATION		LOCATION	PERIOD COVERED			
			FROM		TO	
S2/S3 2d Bn 1st Inf		LZ HAWK HILL BT225315	HOUR 0001	DATE 18 Jan 70	HOUR 2400	DATE 18 Jan 70
ITEM NO	TIME IN OUT		INCIDENTS, MESSAGES, ORDERS, ETC.		ACTION TAKEN	INITIALS
39	1950		(C) Bde Arty to S3: 198th Bde Request S/S grid BT308017, time 18/1800 to 19/0800.		S3	JC
40	2010		(C) D Co to S3: At 1770334 detected active VC broadcasting system putting out propaganda, processing 81mm mortars, Subject of broadcast VC wanted PF's and villagers to come over to their side.		S3	JC
41	2045		(C) Bde S3 to Bn S3: F Trp BT112349, 3/21 locations: BT069293, 090249, 065252, ARVN locations: 181205, 244177, 065252, 192177, 231512.		S3	JC
42	2057		(C) A Co to S3: At BT183275 trip flare went off on W side of perimeter, took 2 incoming chicom, engaged area with SA, M79, and MG shadow requested, observed 2-3 VC/NVA evade W contact broken at 2202H, Checked area with neg findings.		S3	JC
43	2150		(C) Bde S3 to Bn S3: 198th request S/S grids BT306119, 310111, time ASAP to 19/0800 cleared by Lt Kornegay.		S3	JC
44	2305		(C) Shadow to S3: On station 2305H, off station 2315H.		S3	JC
			SUMMARY: 2/1 Inf continues operation FREDERICK HILL with A Co continues recon in force in assigned AO. B Co (-) continues defense of Hawk Hill. C Co continues recon in force in assigned AO. D Co continues combined recon in force in assigned AO. Significant Events: D Co rec'd 2 incoming Chicom grenades 1 dud and 1 went off in foxhole wounding 2 US EM.			
45	2400		Journal closed			
TYPED NAME AND GRADE OF OFFICER OR OFFICIAL ON DUTY. SIGNATURE RICHARD N SMITH, MAJ, ARMOR, S3 						

CONFIDENTIAL

File with HM
Copy of 12 Copies
2d Bn 1st Inf, 196th Bde
LZ HAWK HILL (BT225315) RVN
181330H January 1970

Frag Order 5 to OPORD 03-70

1. Co A:

a. Continue current tunnel search mission in assigned AO, destroying all tunnel complexes discovered.

2. Co B:

a. Continue defense of Hawk Hill.

b. Platoon (-) Arty survey party security mission remains in effect.

c. Be prepared mission for platoon recon in force area Hawk Hill remains in effect.

3. Co C:

a. Continue recon in force in assigned AO.

b. Destroy any tunnel complexes discovered during recon in force operations.

c. Be prepared to accept insertion and extraction of NDP kit daily.

4. Co D:

a. NLT 190730 begin dismantling of present NDP position, concurrently continuing local patrols.

b. Be prepared to move into new operational area South, NLT 191300H Jan, recommended NDP for 19 Jan vicinity BT185299.

5. Co E:

a. Mortars:

(1) Continue current fire support mission.

(2) Be prepared to insert 81mm mortar and crew serviced starlight into Co C NDP NLT 1700H daily.

(3) 81mm mortar and crew to be ready for extraction from NDP NLT 0700H daily.

b. Recon:

(1) Continue refit and training.

(2) OPCON to Co B on order.

CONFIDENTIAL

CONFIDENTIAL

Frag Order 5 to OPORD 03-70

6. Coordinating Instructions:

a. Submit tentative patrol activities, NDP, LP/ambush locations and night patrol routes NLT 1200H daily.

ACKNOWLEDGE

ANNEX A (Operation overlay)

NERONE
LTC

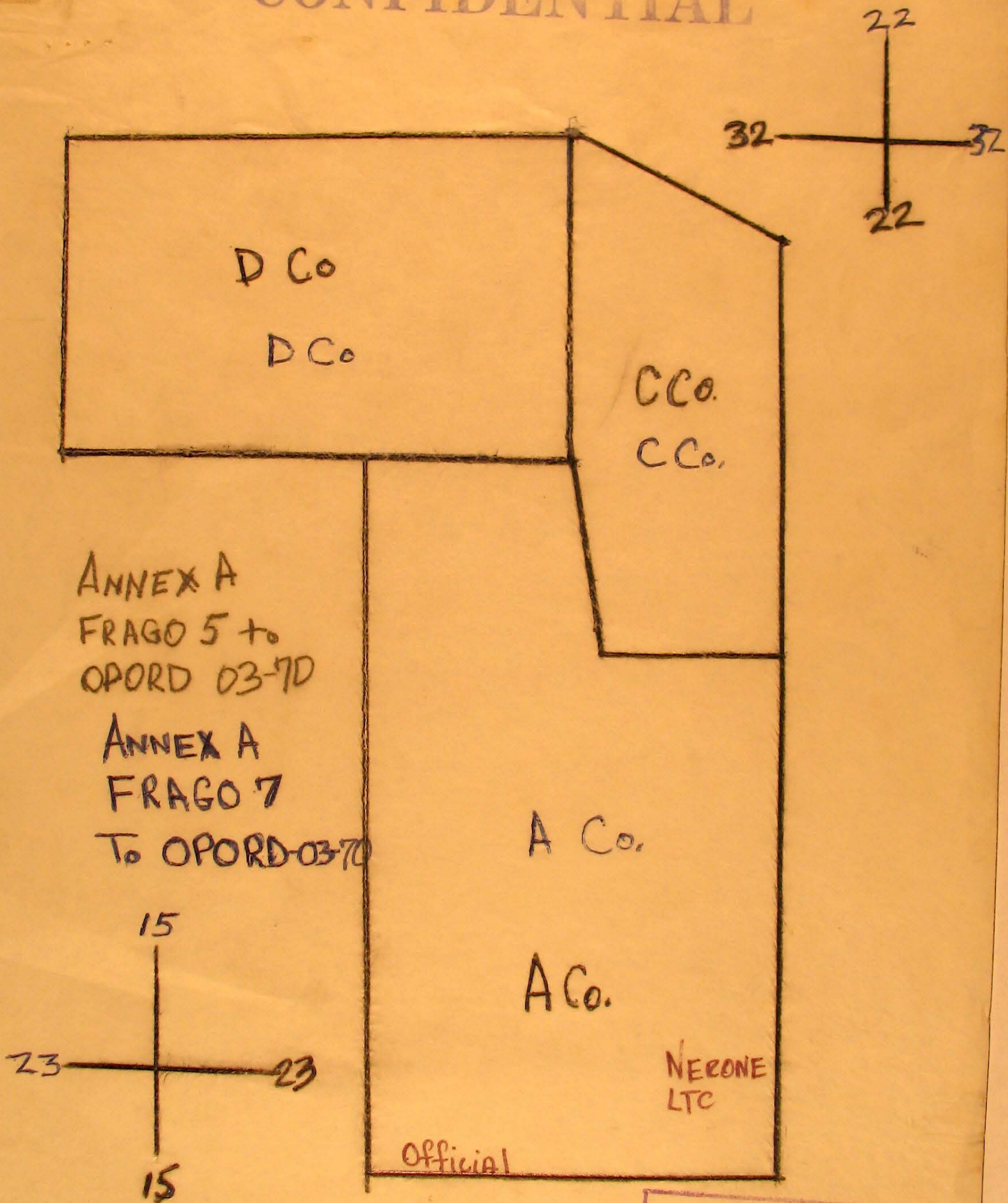
DISTRIBUTION: Special

OFFICIAL:

SMITH
S3

CONFIDENTIAL

CONFIDENTIAL



GROUP 4
DOWNGRADED AT THREE YR INTERVAL
DECLASSIFIED AFTER 12 YRS.

