

INTERIOR PAINTING INSTRUCTIONS,
MSTS CIVIL-SERVICE-MANNED SHIPS

PAINT COLOR SCHEDULE

Interior Painting

MSTS CIVIL-SERVICE-MANNED SHIPS (USNS)

(Except as modified by Appendix A of enclosure (1) and Notes 5 and 6)

1. Compartment color schemes. (For MSTS color code see enclosure (7))

a. Living and Working Spaces.

<u>Space</u>	<u>Bulkheads</u>	<u>Overhead</u>	<u>Deck 1/</u>	*
Ammunition Spaces	White, 26	White, 26	White, 33	
Barber Shop	White, 16	White, 16	Dark Gray, 35	
Baths	White, 17	White, 17	Dark Gray, 35	
Chart House	Green, 7	Green, 7	Dark Gray, 35	
Clipping Rooms	White, 26	White, 26	Dark Gray, 35	
Crew's Quarters and Mess Rooms	White, 16	White, 16	Dark Gray, 35	
Galleys, and all Food Handling Rooms (dry)	White, 16	White, 16	Dark Gray, 35	
Gun Mount Enclosures	White, 26	White, 26	Dark Gray, 35	
Gyro Room	Green, 7	White, 16	Dark Gray, 35	
Laundry	White, 17	White, 17	Dark Gray, 35	
Machinery Spaces, except those having "Color Dynamics" paints	White, 16	White, 16	Red, 36	
Medical and Dental Spaces (excepting Offices)	Green, 7	Green, 7	Dark Gray, 35	
Offices	Green, 7	White, 16	Dark Gray, 35	
Pantries	White, 16	White, 16	Dark Gray, 35	
Passageways	White, 16	White, 16	Dark Gray, 35	
Pilot House	Green, 7	Green, 7	Dark Gray, 35	
Quarters and Mess Rooms, Officer and CPO's	Green, 7	White, 16	Dark Green, 37	
Radio Room	Green, 7	White, 16	Dark Gray, 35	
Sculleries	White, 17	White, 17	Dark Gray, 35	
Shops	White, 16	White, 16	Red, 36	
Staterooms and Cabins	Green, 7	White, 16	Dark Green, 37	
Store and Issue Rooms	White, 16	White, 16	Dark Gray, 35	

Enclosure (1)

23 May 1966

Living and Working Spaces (cont'd)

* Space	Bulkheads	Overhead	Deck 1/
Troop Berthing and Messing	White, 16	White, 16	Dark Gray, 35
Troop Recreation Room	Green, 7	White, 16	Dark Gray, 35
Washrooms, Showers and Water Closet Spaces	White, 17	White, 17	Dark Gray, 35

- * In lieu of painting living and working space bulkheads Marine Green S-GL (MSTS-7) as required above, administrative commanders may authorize use of Beach-Sand S-GL (MSTS-3), Sea Spray Blue S-GL (MSTS-13) or Sun Glow S-GL (MSTS-15) on a deck by deck basis. Example; on a Victory Ship, colors as follows could be used: MSTS-3 on Main Deck, MSTS-15 on O1 level, MSTS-7 on O2 level and MSTS-13 on O3 level. On a deck where officer and crew staterooms exist, use of a different color in each class of stateroom is permitted.

b. Special Compartments.

Battery Shop	Acid-resisting enamel, 63, over one coat White, 16	Acid-resisting enamel, 63, over one coat White, 16	Dark Gray, 35
Dark Rooms	Acid-resisting enamel, 63, tinted to match 28	Acid-resisting enamel, 63, tinted to match 28	Dark Gray, 35
Gratings - Refrigerated Spaces	Spar varnish, 59	Spar varnish, 59	
Light Locks and Light Traps	Dull Black, 50	Dull Black, 50	Dull Black, 50
Refrigerated Spaces	Orange Shellac, 60 Tnemec Diamond Kote 554 or equal, 66	Orange shellac, 60 Tnemec Diamond Kote 554 or equal, 66	None (lead deck w/mastic)

c. Cargo Spaces.

(1) Bulkheads, interior of cargo hatch coamings and sides of ship in way of cargo spaces shall be painted white or aluminum. If aluminum paint, is used, the battens shall be similarly painted. If white is used on the bulkheads and sides of cargo spaces, cargo battens shall be painted dark gray, MSTS Code 35. In both cases, all ladders shall be painted black, except for yellow markings (see subparagraph 3.a).

(2) Overhead shall be painted white, MSTS Code 17.

(3) Decks shall be painted dark gray, MSTS Code 35.

23 May 1966

Living and Working Spaces (cont'd)

(4) All U-bolts, padeyes and other fittings installed in cargo holds to facilitate shifting of heavy cargo shall be painted with red enamel, MSTTS Code 4 or equal. A sign reading "Attach Block Here" shall be stenciled adjacent to such fittings.

d. Preservative Coatings.

<u>Compartment</u>	<u>Coatings</u>	<u>MSTTS Code</u>
Peak tanks	Zinc dust <u>4/</u>	57
Drinking water tanks	Zinc dust <u>4/</u>	57
Feed water tanks	Zinc dust <u>4/</u>	57
Fuel oil tanks	Bare steel (coated with oil)	--
Gasoline tanks	Bare steel	--
Cargo oil tanks	Bare steel (coated with oil)	--
Lubricating oil tank	Rust preventive compound Grade 2	58
Bilges/bilgewells	Red MSTTS Code 36 or Red lead primer, MSTTS Code 31 or commercial primer equal to Rust-Oleum damp proof red primer	
Chain locker	Bituminous emulsion coating (except where galvanized)	61
Voids (non-floodable)	Red throughout	36
Drainage & Sanitary tanks	Bituminous emulsion coating	61
Cofferdams	Red	36

2. Equipment Color Schemes.a. Piping and Wiring

(1) Machinery Spaces Except on Ships Having "Color Dynamics" Paint. All piping in machinery spaces, including that below floor plates, shall be painted to match the surrounding compartment surface. Valve bodies and valve wheels, except as noted below, shall be given one or more coats of high gloss black enamel. Heat-resisting aluminum paint, MSTTS Code 54, shall be used on uninsulated valves subjected to high temperatures. Fire-main and carbon dioxide system valve bodies and handles shall be given one or more coats of red enamel, MSTTS Code 4, or equal. All piping shall be stenciled to indicate contents and direction of flow. The color of paint on wiring in machinery spaces shall match the adjacent compartment surface, except in bilges, where such wiring, if run, shall be painted white, MSTTS Code 16.

(2) Outside of Machinery Spaces. Piping and wiring outside of machinery spaces shall be painted to match adjacent compartment surfaces, except for valves, which shall be painted black enamel, MSTTS Code 48, or with heat-resisting aluminum paint, MSTTS Code 54, if necessary. Fire-main and carbon dioxide system valve bodies and handles shall be painted red enamel, MSTTS Code 4 or equal.

b. Machinery Except on Ships Having "Color Dynamics" Paint. Machinery shall be painted with light gray equipment enamel, MSTS Code 28, trimmed out with black enamel, MSTS Code 48, except surfaces subjected to high temperature, which shall be painted with heat-resisting aluminum paint, MSTS Code 54.

c. Damage Control Lockers and Equipment. Distinctive marking of damage control lockers and the equipment stowed therein is considered necessary to provide ready identification and to avoid misplacement or misuse of equipment. Therefore, in order that the identifying paint markings for all damage control lockers and equipment in MSTS ships will be standardized, the following markings are prescribed:

- * (1) The inner and outer sides of damage control locker doors shall be painted international orange, MSTS Code 55. The outer side of Repair Lockers No. 1 and No. 2 shall have one or two black stripes 1" wide painted under the door label, same length as label plate.
- * (2) The handles or other suitable parts of tools and other equipment stowed in damage control lockers shall be painted international orange, MSTS Code 55 and, where practicable, marked with one or two black stripes to indicate that the tools or equipment belong to damage control locker number one or number two. Ships having only one repair locker shall omit the black stripe on door and equipment.

d. Door Finger Guards. New door finger guards are coated with "Entone" Wax Emulsion #18 to prevent corrosion of the aluminum guards. This is a water soluble wax preparation which can be applied by brushing or wiping. It is directed that the guards be wiped down with a liquid wax about once a year, in order to preserve this coating. Variations in this schedule should be based on service experience.

e. Highline Transfer Equipment. This equipment shall be maintained in accordance with the color identification specified in NWP 38 which is white enamel, MSTS Code 17.

3. Markings of Hazards to Personnel.

a. Hazards to personnel, such as low beams, high hatch coamings and other "strike against, stumbling and tripping hazards," shall be painted with alternate bands of black, MSTS Code 48, and brilliant yellow, MSTS Code 47, particularly in troop areas. Band stripes shall vary from 1½" to 4" in width, depending upon the size and disposition of the area to be painted; small areas will require smaller stripe widths. On interior stairways a 4" band of brilliant yellow shall be applied immediately under the tread on the top and bottom risers. Cargo hold ladder handrails shall be painted solid yellow from the deck up six feet and from the top down one foot. Top and bottom rungs shall also be painted solid yellow.

5 March 1965

b. Professional judgment and experience shall be the guide line for the use of these warning stripes. Such striping shall not be used in cabin passenger areas on dependent transports.

c. The top and bottom riser on stairways in dependent areas may be painted white, MSTS Code 17 as a safety feature.

4. Walkways, Ladder Landings, and Similar Areas. International Dekgrip Code #898 or equal may be used.

5. Refurbished Transports. Refurbished MSTS dependent transports shall maintain the colors designated by the Interior Designer except as modified by COMSTS. All paint colors are Porter Paint Company or equal except #34-3 Lily Green and #61 Silver Gray which are Pratt & Lambert Company or equal. Paint schedules are listed below: *

P2-SE2-R1 CLASS SHIPS

PASSAGES - UPPER DECK

#97T Pumpkin - Passage side of all stateroom doors
Federal Std No. 595 Color No. 22648 FSN 8010-616-0003 - Bulkheads
#282P Avalon Blue - Ceilings
#169T Persian Orange - Exit doors

VIP STATEROOM #0104

White - Toilet ceiling
#143R Citron - Stateroom low ceiling
#9P Alabaster - Bulkheads, high ceiling, valances, wardrobes and both sides of wardrobe and toilet doors
#169T Persian Orange - Room side of Entrance door

VIP STATEROOM #0103

#282P Avalon Blue - Stateroom low ceiling. Remainder of room same as Stateroom #0104

PASSENGER STATEROOMS - ALL DECKS EXCEPT VIP ROOM #0103 and #0104

White - Ceilings
Federal Std No. 595 Color No. 23695 FSN 8010-579-9200 - Bulkheads, beds, closet doors
#285R Nile Blue - Exterior of chests and stateroom side of doors
#330T Charcoal - Base in staterooms
Federal Std No. 595 Color No. 22648 FSN 8010-616-0003 - Toilet bulkheads

MAIN LOBBY, PASSAGE FR 98-120 AND PURSERS OFFICE FR 120-124

#282P Avalon Blue - Ceilings
#444 Off White - Bulkheads
#300T Pageant Blue - Both sides of double doors at stairs and passage side of stateroom doors

COMSTSINST 4750.1B

5 March 1965

MAIN LOBBY (cont'd)

#330T Charcoal - Stair stringer

#169T Persian Orange - 2 sets P/S double doors

MAIN DECK - PASSAGES

#300T Pageant Blue - Passage side of stateroom doors

#444 Off White - Bulkheads

#282P Avalon Blue - Ceilings

#169T Persian Orange - Exit doors

STAIR BETWEEN MAIN DECK AND UPPER DECK FR 106-113

#282P Avalon Blue - Ceiling

#169T Persian Orange - Stair soffit

#300T Pageant Blue - Bulkheads

#124P Moon Mist - Stair balustrades

#330T Charcoal - Stair stringer

MAIN LOUNGE FR 119½ - 142

#282P Avalon Blue - High ceiling

#34-3 Lily green - 6'11" high ceiling

#444 Off White - 6'8" high ceiling and fascia between all high and low ceilings, valances, ledges and forward and aft side of columns

#143R Citron - P/S outboard bulkheads and bulkheads at FR 120 and 142

#210R Chamois - Lounge side of aft doors

#169T Persian Orange - Lounge side of forward doors and P/S sides of columns

SALOON MESS FR 142-172

#282P Avalon Blue - High ceiling and interior of light cove

#444 Off White - Face of light cove and valance P/S detail, sheet D2

Federal Std No. 595, Color No. 23711 FSN 8010-616-0008 - Forward, P/S bulkheads and aft bulkhead Fr 166 up to double doors except behind screens as noted below for PATCH and similar ships

#34-3 Lily Green - Low ceiling

#444 Off White - Inboard bulkhead including transverse bulkhead at Fr 157 P/S and aft side of aft alcove Fr 166-172. Trunk columns

#173 - Spring Yellow - Area behind P/S screens at Fr Nos. 141, 156 and 165

#285T Peacock - Area behind P/S screens at Fr Nos. 144, 154 and 162

#169T Persian Orange - Area behind P/S screens at Fr Nos. 142, 151 and 166

#124P Moon Mist - Exterior of screens, ledge and trim of expanded metal window screens P/S detail sheet D2, trim of screens at entrance to pantry P/S, "H" posts and saloon side of all doors

White - Expanded metal window screens P/S detail sheet D2 and expanded metal window screens at entrance to pantry P/S

CHILDREN'S PLAYROOM FR 88-94 MAIN DECK

#282P Avalon Blue - High and low ceiling, fascia and ceiling of toilet

#300T Pageant Blue - Doors and 2 free standing pipes

Federal Std No. 595 Color No. 23695, FSN 8010-579-9200 - Playroom and toilet bulkheads

AFT SMOKING LOUNGE FR 189-197

#143R Citron - Ceiling
#444 Off White - Valance
#124P Moon Mist - New pilasters to right and left of airports,
bulkhead areas marked "A", see Dwg #8N1-4C, lounge side of P/S double
doors, starboard storage room and both sides of doors
Surf Green - Bulkheads

STAIR AND PASSAGE AT FR 197-202

#282P Avalon Blue - Ceiling
#169T Persian Orange - Stair soffit. P/S outboard double doors
#444 Off White - Bulkheads
#330T Charcoal - Stair stringer
#300T Pageant Blue - Passage doors and corridor side of lounge
double doors

PASSENGER ENTRANCE AND PASSAGES FR 98-128 SECOND DECK

#282P Avalon Blue - High ceiling and passage ceilings
#74T Sunglow - Low ceiling P/S passenger entrance
#169T Persian Orange - Exit doors. Both sides of P/S passage doors
at Fr 98, 120 and 138
Federal Std No. 595 Color No. 26492, FSN 8010-616-0005 - Curved
forward transverse bulkhead at Fr 113. P/S bulkheads around double
door of passenger entrance
Federal Std No. 595, Color No. 25526, FSN 8010-616-0016 - Starboard
inboard passage bulkhead Fr 111-138. Port inboard passage bulkhead
Fr 117-120

#330T Charcoal - New vertical battens, forward bulkhead
#444 Off White - P/S outboard passage bulkheads Fr 98-138. P/S
inboard passage bulkheads Fr 98-112
#173R Spring Yellow - Passage side of all stateroom doors
#300T Pageant Blue - Double doors P/S entrance

OTHER PASSAGES - SECOND DECK

#173R Spring Yellow - Passage side of all stateroom doors
#444 Off White - Bulkheads
#282P Avalon Blue - Ceilings
#169T Persian Orange - Exit doors

AUDITORIUM

#74T Sunglow - Ceiling
Federal Std No. 595, Color No. 25526, FSN 8010-616-00161 - All bulkheads
#330T Charcoal - Base, head, pilasters, curtain valance and interior
of altar stowage, auditorium side of doors and stage platform risers

DISPENSARY

White - Ceiling
Federal Std No. 595, Color No. 23695, FSN 8010-579-9200 - Bulkheads
#285R Nile Blue - Doors

5 March 1965

DOCTOR'S OFFICE, PHARMACY AND LAB

White - Ceiling

Federal Std No. 595, Color No. 23711, FSN 8010-616-0008 - Bulkheads

#285R Nile Blue - Doors

PASSAGE FR 120-128, SECOND DECK

#282P Avalon Blue - Ceiling

#444 Off White - Bulkheads

#169T Persian Orange - Column

#285R Nile Blue - Doors

BARBER SHOP

White - Ceiling

Federal Std No. 595, Color No. 23711, FSN 8010-616-0008 - Bulkheads

#285R Nile Blue - Doors and cabinets

TROOP AREA

White - Ceilings in Mess, Recreation and Berthing areas

#97T Pumpkin - All doors

#132 Candlewick - Bulkheads in Berthing areas

#282P Avalon Blue - Bulkheads in Mess areas

#2P Oyster Gray - Bulkheads in Recreation areas

#61 Silver Gray Floor Enamel - Hatch boards

ACCESS STAIRWAYS

White - Ceiling

#282P Avalon Blue - Bulkheads

#330T Charcoal - Stair stringer and stair side of doors

#169T Persian Orange - Handrails and stair soffit

P2-S2-R2 CLASS SHIPS

PASSENGER LOUNGE FR 87-101½

#282P Avalon Blue - Ceiling, pipes, ducts and beams

#210R Chamois - Aft bulkhead and lounge side of doors in forward bulkhead

#136P Jade White - P/S bulkheads, forward bulkhead Fr 89½ and columns

#143R Citron - Forward bulkhead Fr 87

OFFICERS' AND PASSENGERS' DINING ROOM

#282P Avalon Blue - Ceiling, pipes, ducts and beams

Federal Std No. 595, Color No. 23711, FSN 8010-616-0008 - Forward bulkhead Fr 106

#444 Off White - P/S bulkheads Fr 106 to 109, 122 to 127, forward bulkhead at Fr 109 P/S columns, P/S bulkheads above dado, P/S bulkheads below windows and P/S screens at entrance

#124P Moon Mist - Servers, bulkhead doors and trim of P/S screens at entrance.

5 March 1965

PASSAGES P/S FR 101½-106 MAIN DECK, INCLUDING ALL OTHER PASSAGES

#444 Off White - Ceiling, stair soffit and stair spandrels

#282P Avalon Blue - Bulkheads

#169T Persian Orange - Stair handrails

ENTRANCE FOYER - SECOND DECK, INCLUDING STARBOARD PASSENGER LOBBY FR 114-130

#444 Off White - Ceilings, beams, ducts and pipes

#282P Avalon Blue - All bulkheads and columns except aft bulkhead at entrance to lounge

#300T Pageant Blue - All doors

#258R Tropical Blue - Trim of coffee bar and finish of existing back bar

#143R Citron - Face of coffee bar and aft bulkhead at entrance to lounge

CHILDREN'S PLAYROOM

#143R Citron - Ceiling, pipes, ducts and beams

#274 Spray Blue - Bulkheads

#169T Persian Orange - Doors and gate

#444 Off White - Toilet and passage leading to children's playroom

STATEROOMS**Scheme #1**

#282P Avalon Blue - Bulkheads and doors

#143R Citron - Chests, lockers and desks

Scheme #2

#9P Alabaster - Bulkheads and doors

#285R Nile Blue - Chests, lockers and desks

Scheme #3

#132P Candlewick - Bulkheads and doors

#285R Nile Blue - Chests, lockers and desks

Schemes #1, #2 and #3

White - Ceilings

#61 Silver Gray Floor and Deck Enamel - Decks

NOTE: No like color schemes are to adjoin each other. Each scheme shall be rotated so they occur in every third room.

TROOP AREA

White - Ceilings in Mess, Recreation and Berthing areas

#97T Pumpkin - All doors

#132 Candlewick - Bulkheads in Berthing areas

#282P Avalon Blue - Bulkheads in Mess Areas

#2P Oyster Gray - Bulkheads in Recreation areas

#61 Silver Gray - Decks in Mess, Recreation and Berthing areas

5 March 1965

P2-S1-DN3 CLASS

FOYER FR 84½-91, 01 LEVEL

- #444 Off White - Ceiling
- #282P Avalon Blue - Bulkheads
- #169T Persian Orange - Stair Soffit
- #300T Pageant Blue - Elevator doors and P/S doors

PASSAGE LOBBY FR 91-95, 01 LEVEL

- #444 Off White-Ceiling
- #9P Alabaster - Aft bulkhead Fr 95 and all doors
- #282P Avalon Blue - P/S and forward bulkheads and aft bulkhead around doors to enclosed promenade fr 94½ and return to Fr 95

LOUNGE FR 95-107, 01 LEVEL

- #282P Avalon Blue - High ceiling and facia
- #9P Alabaster - Low ceiling, valance, all bulkheads and doors

ARCADE FR 107-119, 01 LEVEL

- #282P Avalon Blue - Ceiling
- #136P White Jade - All bulkheads except around soda fountain
- #313P Horizon Blue - Bulkhead around soda fountain and all doors

LIBRARY FR 111-119

- #282P Avalon Blue - Ceiling
- #136P White Jade - Bulkheads, ledge, valance and port door
- #313P Horizon Blue - Starboard door

CHILDREN'S PLAYROOM - 02 LEVEL

- White - Ceiling
- #34-3 Lily Green - All bulkheads, doors and sides of wall desks
- #169T Persian Orange - Trim of blackboard
- #282P Avalon Blue - Toilet bulkhead
- #300T Pageant Blue - Toilet door

LOBBY FR 91-107, SECOND DECK

- White - Ceiling
- #282P Avalon Blue - Passage bulkheads, vestibule at entrance ramp, bulkheads at Fr 91, 95 and 95½, and P/S bulkheads around double doors
- #330T Charcoal - New vertical battens
- #300T Pageant Blue - All doors except as noted below
- #169T Persian Orange - Outside double door at ramp P/S, aft passage doors at Fr 107 and trim of troop office window

ALL PASSAGES

White - Ceilings

#282P Avalon Blue - Bulkheads

#300T Pageant Blue - Passage side of stateroom doors

#169T Persian Orange - Doors between passages and exit doors to stairs

SALOON MESS FR 71-91, THIRD DECK

#282P Avalon Blue - High ceiling and facia

#34-3 Lily Green - Low ceiling

#143R Citron - Columns, two pilasters on forward bulkheads, two pilasters on each P & S bulkhead, entrance to kitchen and entrance vestibule to saloon mess

#258 Tropical Blue - Forward and aft bulkheads behind screens, P & S bulkheads

#285T Peacock - Exterior of servers, new screen stanchions and all doors

STATEROOMS

White - Ceilings

#282P Avalon Blue - Bulkheads in rooms which have (a) gray and blue floor tile or (b) black and green floor tile

#143R Citron - Exterior chests, berths, closet doors, stateroom side of door and toilet doors which have (a) gray and blue floor tile or (b) black and green floor tile

#9P Alabaster - Bulkheads in rooms which have terra cotta floor tile

#285R Nile Blue - Exterior chests, berths, closet doors, stateroom side of doors, and toilet doors in rooms which have terra cotta floor tile

TROOP AREA

White - Ceilings in Mess, Recreation and berthing areas

#97T Pumpkin - All doors

#132 Candlewick - Bulkheads in berthing areas

#282P Avalon Blue - Bulkheads in Mess areas

#2P Oyster Gray - Bulkheads in Recreation areas

#61 Silver Gray Floor Enamel - Hatchboards

6. Unrefurbished Transports. Administrative commanders are granted authority to paint out interior spaces of unrefurbished transports in accordance with paint schedules listed in paragraph 5 above.

*

5 March 1965

NOTES:

1/ Decks covered with magnesite, tile, quarry tile or other similar deck covering shall be maintained in accordance with BUSHIPS Technical Manual, Chapter 14. If the detergent, P-C-431, FSN GE7930-249-8035, specified in the manual for cleaning magnesite deck coverings is found to be unsatisfactory, particularly for excessively soiled and deteriorated areas, authorization is granted to use commercial detergent, Diasyn No. 7 or its equivalent.

2/ As an alternate, bare steel passageway decks may be left unpainted except for a 6" gray deck dado on the bulkhead, at the intersection of the bulkhead and deck, and an 8" deck dado on the deck at the same point. The unpainted steel deck between dados should be coated with boiled linseed oil then wiped with a cloth to remove the excess oil. In accomplishing this painting, care must be taken to remove all paint from the section of the deck which is left unpainted, and should be burnished to a high polish.

3/ Wherever gray deck paint is used, a 6" dado, or mopping band, should be carried up the adjacent bulkhead.

4/ Zinc dust replacing cement wash to be applied at discretion of cognizant commander at such times as cement wash requires renewal.

5/ The attached painting schedule, Appendix A of enclosure (1), covers interior painting of certain spaces in dependent transports. This enclosure will serve as a guide in the event that transports of other classes are activated. This paint schedule for these ships will be followed, except that when no color has been indicated for a space, the same color as shown in the table, subparagraph 1.a. of enclosure (1) for the remainder of the ships will be used.

* 6/ In those ships having "Color Dynamics" engine spaces, painting shall be maintained to preserve the existing color scheme.

* 7/ Attention is directed to the fact that machinery nameplates and identification plates shall be maintained in a legible condition. Care must be exercised that these plates are not covered with paint.

APPENDIX A

COMSTINST 4750.1B

5 MAR 1965

INTERIOR PAINT SCHEDULE

MIL. SPEC.	MSTS NO.	COLOR NAME	MIL. SPEC.	MSTS NO.	COLOR NAME
MIL-E-	(FORMULA)		MIL-E-	(FORMULA)	
17133A	1	CREAM, GL	17326(SHIPS)	9	CLIPPER BLUE, 8-GL
17134A	2	LIGHT GRAY, GL	17327(SHIPS)	10	LIGHT GRAY, 5-GL
17136A	3	BEACH-SAND, 8-GL	17328(SHIPS)	11	CLOUD GRAY, 5-GL
17137A	4	RED, GL	17329(SHIPS)	12	LIGHT BLUE, 8-GL
17138A	5	MEDIUM BLUE, GL	17330(SHIPS)	13	SEA SPRAY BLUE, 8-GL
17139A	6	JADE GREEN, GL	17152(SHIPS)	14	DARK OAK, GL
17140A	7	MARINE GREEN, 8-GL	17466(SHIPS)	15	SUNGLOW, 8-GL
17325(SHIPS)	8	ROSE-WOOD, 8-GL		16	OFF WHITE, 8-GL

GENERAL NOTES

1 -	P2-SI-DN3-DECKS	04 LEVEL		02 LEVEL		01 LEVEL		MAIN DK		SECOND DECK		THIRD DECK	
		DECK	SIDES	DECK	SIDES	DECK	SIDES	DECK	SIDES	DECK	SIDES	DECK	SIDES
	PASSAGEWAYS												
	SHIPS & MIL. OFFICERS	16	9					16	11			16	3
	TROOPS, CREW, & E.M.												
	CABIN PASSENGERS			16	16	16	11	9	9				
	ACCESS, FOYER & ARCADE												
	CREW & E.M.			16	11	16	11	16	11	16	11	16	11
	CABIN & TROOP PASSENGERS			16	11	16	11	16	11	16	11	16	11
	LOBBY												
	CREW, E.M. & TROOPS												
	CABIN PASSENGERS			16	3	16	11			16	3		
	STATEROOMS												
	SHIP & MILITARY OFFICERS	16	13	16	13	16	13	16	13				
	CABIN PASSENGERS			16	11	16	13	16	13				
	LOBBY (PASSAGE SIDE)												
	PASSAGEWAYS	9	2	4									
	MAIN STAIR LOBBY			11	4					11		11	
	OFFICER'S STATEROOMS												
	CREW QUARTERS									11	2		
	CABIN PASSENGER STATEROOMS					4	5						

2 - THE GOVERNMENT FURNISHED FURNITURE FOR P2-SI-DN3, P2-SI-DN3 AND, CS-IN P&C SHIPS IS SHERWIN-WILLIAMS COMPANY "KENGAD ENAMEL, GLOSS, LIGHT GRAY CH8904 AND DARK GRAY CH8905.

3 - THIS PLAN SUPERSEDES MSTS PLAN NO. 51901-1082017 ALT2 DATED 6/23/60

4 - ALL WET SPACES, NO 17, WHITE, GLOSS, ENAMEL.

CORRECTED OR DESIGNATIONS ADDED G.N. NO. 4		3-21-58	GUIDANCE PLAN	MSTS PLAN NO.		
ALTERATIONS				51901	1082314	ALT 1
INC.	DESCRIPTION	DATE		DATE: 14 APRIL 1963 PAGE 1 OF 4		

PAINT SCHEDULE (INTERIOR)

PUBLIC SPACES	AREA	P2-SI-DN3	P2-SI-DN3	C3-IN-P&C	C3-SI-A3	C1-M-AVI
		DECK	SIDES	DECK	SIDES	DECK
	AUDITORIUM					
	DECKHEAD		16			
	BULKHEADS		11			
	BARBER SHOP					
	DECKHEAD	16	16	16	16	
	SIDES	11	11	11	11	
	CHILDREN'S PLAY ROOM					
	DECKHEAD	9	9	9	9	16
	SIDES	3	3	3	3	3
	DINING SALOON					
	DECKHEAD	16	16	16	16	11
	SIDES	7	7	7	7	11
	OUTBOARD BULKHEADS		7		7	
	INBOARD BULKHEADS		15		15	
	GYMNASIUM					
	DECKHEAD		16			
	BULKHEADS		3			
	HOSPITAL AREA					
	DECKHEAD	16	16	16	16	7
	SIDES	7	7	7	7	7
	LOUNGE					
	DECKHEAD	16	16	16	16	11
	SIDES	3	3	3	3	11
	SIDES, LARGE LOUNGE				8	
	SIDES, SMALL LOUNGE				9	
	SIDES, MAIN DECK				3	
	OUTBOARD BULKHEADS		8			
	INBOARD BULKHEADS		9			
	SMOKING ROOM					
	SIDES			8		11
	DECKHEAD		16	16		11
	SIDES, MAIN DECK				8	
	SIDES, UPPER DECK				3	
	VESSEL'S EXCHANGE					
	DECKHEAD	16	16	16	16	16
	SIDES	11	11	11	3	3

MSTS PLAN NO. 51901-1082314

PAGE 2 OF 4

PAINT SCHEDULE (INTERIOR)

AREA	P2-SI-DN3	P2-SI-DN3	C3-IN-P&C	C3-SI-A3	C1-M-AVI
	DECK	SIDES	DECK	SIDES	DECK
LOBBIES & PASSAGEWAYS					
DECKHEAD	*	16	16	16	16
SIDES	*	3	3	3	3
SHIP'S OFFICERS DAY ROOM					
DECKHEAD	16	16	16		16
SIDES	3	3	3		3
STATEROOMS					
DECKHEAD	*	25	15	15	16
SIDES	*	11	11	11	3
WASHROOMS					
DECKHEAD		16		16	
SIDES		13		13	
MESSROOM					
DECKHEAD	16	16	16	16	16
SIDES	13	13	13	13	3
PASSAGEWAYS & STAIRWELLS					
DECKHEAD	*	16	16	16	16
SIDES	*	11	11	11	11
QUARTERS					
DECKHEAD	16	16	16	16	16
SIDES	16	16	16	16	11
RECREATION AREA					
DECKHEAD	16	16	16	16	16
SIDES	3	3	3	3	3
DAYROOM					
DECKHEAD	16	16		16	16
SIDES	13	13		13	3
MESSROOMS					
DECKHEAD	16	16	16	16	16
SIDES	11	11	11	11	3
PASSAGEWAYS & STAIRWELLS					
DECKHEAD	*	16	16	16	16
SIDES	*	11	11	11	11
QUARTERS					
DECKHEAD	16	16	16	16	16
SIDES	13	3	3	3	11

MSTS PLAN NO. 51901-1082314

PAGE 4 OF 4

PAINT SCHEDULE (INTERIOR)

AREA	P2-SI-DN3	P2-SI-DN3	C3-IN-P&C	C3-SI-A3	C1-M-AVI
	DECK	SIDES	DECK	SIDES	DECK
FIRE CONTROL ROOM					
DECKHEAD	15	13	13	13	13
SIDES	13	13	13	13	15
OFFICES					
DECKHEAD	16	16	16	16	16
SIDES	11	11	11	11	3
RADAR & RADIO ROOMS					
DECKHEAD	13	13	13	13	13
SIDES	13	13	13	13	13
WHEELHOUSE & CHART ROOM					
DECKHEAD	13	13	13	13	13
SIDES	13	13	13	13	13
FURNITURE					
CHILDREN'S PLAYROOM	12	12	12	12	2
ALL OTHER FURNITURE	**	**	**	2	2
INTERIOR DOORS (PASSAGE SIDE)					
04 LEVEL	9				
03 LEVEL	*	2	2	2	2
02 LEVEL	*	2	5	2	2
POOP DK (01 LEVEL)					2
UPPER DECK (01 LEVEL)		14	6	6	
MAIN DECK	*	6	14	5	2
2ND DECK	*	5		4	2
3RD DECK	*	4	2	2	
4TH DECK					
FIRST PLATFORM		2			
01 LEVEL	*				
INTERIOR DOORS (ROOM SIDE)					
ALL DOORS (ALL DECKS)		2	2	2	2
* SEE PAGE 1 - NOTE 1					
** SEE PAGE 1 - NOTE 2					

MSTS PLAN NO. 51901-1082314

PAGE 3 OF 4

EXTERIOR PAINTINGMSTS CIVIL-SERVICE-MANNED SHIPS (USNS)

1. Exterior Color Schemes. Color schemes indicated below shall be followed unless sponsors for special project ships request otherwise. *
Under these circumstances, COMSTS will furnish color schemes and direct their use.

a. Vertical Surfaces. Hull and superstructure vertical surfaces including weather side of damage control locker doors shall be painted haze gray, MSTS Code 45, except that name boards, hull markings and stacks shall be painted in accordance with enclosures (4) and (5).

b. Horizontal Surfaces. All deck areas and horizontal surfaces exposed to aerial detection shall be painted dark gray, MSTS Code 35, with the following exceptions:

(1) Lifeboats shall be painted in accordance with enclosure (6).

(2) Unexposed Horizontal Surfaces. The use of white, MSTS Code 33, is authorized for the painting of the undersides of deck heads and other horizontal surfaces not visible to surface or air detection, where the use of such paint will provide a desirable increase of the lighting in such areas. Where the use of the white paint provides no such advantage, the horizontal surfaces shall be painted with the same color paint as is used on adjacent bulkheads or supporting structure.

(3) Deck Surfaces Subject to Excessive Wear. Tests conducted on certain exterior deck surfaces, subject to excessive wear due to concentrated traffic, indicate that vinyl alkyd paints have a high resistance to such wear. The use of these paints in such areas is advantageous even though the cost of the material and the cost of application are higher than the usual deck paints. However, because of the additional cost, the application of vinyl alkyd paints should be limited to those external deck areas on which the wear and abrasion due to heavy traffic is so great that the extra expense is warranted. All MSTS Civil-Service-Manned Ships (USNS) and MSTS Commissioned Ships (USS) are authorized to use vinyl alkyd on external deck areas subject to excessive wear and abrasion. The method used for applying these paints shall be as follows:

(a) As the vinyl alkyd paint should be applied over base metal, the surface to be coated shall be cleaned to base metal in the most economical manner.

(b) After surface preparation, the surface in question shall be given one coat of pretreatment wash primer, MSTS Code 32.

(c) The protected area in turn should be covered with three to five coats (total thickness 5 mils) of red lead primer (vinyl), MSTS Code 31.

(d) The primer shall then be covered with one or two coats, as necessary, of gray, vinyl alkyd paint, MSTS Code 30.

(e) When applying Navy standard vinyl alkyd paint, the safety precautions given in paragraph 3 of enclosure (6) shall apply. However, it has been ascertained that commercial vinyl alkyd paints are now available with more desirable characteristics. These paints do not require lengthy drying time between coats and have a safer flash-point. Procurement of such paints will enable MSTS Civil-Service-Manned Ships (USNS) to carry a supply in ships' stores for maintenance and touch-up at sea. Commercial paints of high quality vinyl alkyd are authorized. The colors shall comply with Federal Standard No. 595, Colors Nos. 26251 and 36081. The commercial vinyl alkyd paints and compatible thinners shall fully meet the requirements of CG Regulation 147.05-100.

(4) Lifeboat Sea Painters.

(a) Locations for securing sea painters for all lifeboats aboard MSTS ships will be established. Securing places must be far enough forward to permit the lifeboats to be directly under the davits when the boats are riding to their sea painters.

(b) The established locations for the sea painters shall be marked with a label plate for identification purposes. The label plates shall consist of the words "SEA PAINTER" followed by the lifeboat number (or numbers for nested boats). Paragraph 75.20-15(z) of the U. S. Coast Guard "Rules and Regulations for Passenger Vessels" (CG-256) describes sea painters for lifeboats to meet the Coast Guard requirements.

(5) Wooden Decks. Wooden decks shall not be painted but will be kept clean and bright with sand.

(6) Wellin Gravity-Type Davits. "Witness marks" shall be painted on both the gravity-type davit tracks and arms of all ships to indicate the point at which power hoisting of the davits shall be stopped. Stripes in form of "witness marks" shall be painted with white paint, MSTS Code 33, on both davit tracks and davit arms. These stripes shall be wide enough (at least $1\frac{1}{2}$ "") to be readily visible by the winch operator from the deck, and so located on each trackway and arm that the marks will line up before the limit switch is required to function.

COMSTSINST 4750.1B
5 Mar 1965

(7) ABC Defense Washdown Fog Nozzle Brackets. Until permanent washdown systems are installed in MSTS ships, ship's force will paint washdown brackets with international orange.

c. Inorganic Zinc Coated Surfaces. Horizontal and vertical surfaces coated with inorganic zinc compound shall be painted as required by the effective edition of COMSTS Instruction 9190.4. *

23 May 1966

**BOTTOM PAINTING INSTRUCTIONS FOR
MSTS CIVIL-SERVICE-MANNED SHIPS (USNS)**

1. All MSTS ships under administrative control of COMSISFV may use cold plastics for bottom coatings. In addition, at request of other commands, cold plastics may be used for bottom coatings when ships are drydocked outside continental United States and commercial paints equivalent to MARAD standards are not available.

2. Hot plastic antifouling paint is prescribed for ships under the technical cognizance of the NAVSHIPSYSCOMHQ. The application of this hot plastic is far more expensive than commercial bottom paints. As MSTS ships are drydocked annually the hot plastic covering is damaged by exposure to the air, especially under hot weather conditions. In view of the greater economy effected by the employment of commercial bottom paints, the use of hot plastic bottom covering is not justified for MSTS service. Therefore, MSTS civil-service-manned ships (USNS) will follow commercial practice in the application of bottom paints. The following Maritime Administration material specifications, which comply with Federal specification requirements, are deemed satisfactory for this purpose:

<u>Paint</u>	<u>Specification</u>	<u>MSTS Code</u>
Ship-bottom, anticorrosive	52-MA-401b	38
Ship-bottom, antifouling	52-MA-403c	40

Commercial bottom paints equal to above may be used in lieu of paint conforming to MARAD specifications.

3. The following general instructions shall apply in all cases:

a. All loose paint, rust, scale, dirt, marine growth, grease or foreign substance shall be removed by scrapers, wire brooms, sandwashing, etc. Wire brushing, however, shall not be done unless and until the bottom is practically dry. It is not the intention herein to specify the details of how bottoms shall be cleaned, provided the results desired are satisfactorily attained.

b. When corrosion is light and the old paint film is in good condition and intact, repainting may be accomplished without removing intact paint. When surfaces are clean and dry, areas devoid of paint shall receive a touch-up coat of anticorrosive, MSTS Code 38, and then the entire bottom from keel to 12" above the average maximum load line, except at the stern, shall be painted with two coats of anticorrosive paint. The two coats of anticorrosive paint shall be followed by one coat of antifouling paint, MSTS Code 40, which shall be applied to a point 6" below the average minimum load line.

Enclosure (3)

23 May 1966

c. If corrosion is prevalent or the paint is in poor condition, the underwater body shall have surface preparation as outlined in "General Specifications for Ships of the United States Navy", for complete repainting. When surfaces are clean and dry, three coats of anticorrosive paint shall be applied, followed by one coat of antifouling paint. The areas to be covered with anticorrosive and antifouling paint shall be as defined in b. above.

d. The outside plating between a point 6" below the average minimum load line and 12" above the average maximum load line shall have two coats of black commercial marine boot-topping paint. Boot-topping paint shall be compatible with the anticorrosive paint. The first or primer coat of boot-topping shall have a flat finish, MSTs Code 41; the second or finish coat shall dry with a glossy finish, MSTs Code 42.

e. In general, the drying time for anticorrosive paint and the flat primer coat of boot-topping paint is about four hours; the drying time for the gloss finish coat of boot-topping is about six hours.

f. Ships presently painted with hot plastic may be touched-up with cold plastic as outlined in "General Specifications for Ships of the United States Navy". When complete repainting is required, the instructions contained in paragraph 2 above shall apply as to materials.

g. Two coats of electrical insulating paint, MSTs Code 44, shall be applied to the rudder post, the submerged portion of the rudder, the propeller hub, and to the stern section of the hull approximately 20' forward from the stern frame from the keel to a point 6" below the average minimum load line. This application of paint is in lieu of the usual anticorrosive paint below the light load line. Above the light load line, anticorrosive paint shall be applied as outlined in subparagraphs b. and c. above. This special paint does not replace the customary zinc plates. Antifouling paint shall be applied over electrical insulating paint, MSTs Code 44.

h. The film thickness of two coats of brush applied anticorrosive paint shall not be less than 3 mils. Application of anticorrosive paint by spraying should meet this criterion.

i. Boot-topping paint, MSTs Code 43, shall not be used on steel hulls. Additionally, outside, dull black paint, MSTs Code 50, is not a boot-topping paint.

j. Zinc chromate paint shall not be used as primer where it is subject to immersion in water. It tends to blister and does not provide proper protection. Anticorrosive paint, in accordance with paragraph 1, shall be used.

COMSTINST 4750.1B
5 Mar 1965

k. Red lead primer, MSTS Code 52, has been developed primarily for use with alkyd-type paints; is not compatible with commercial anticorrosive paints; and shall not be used in priming coat under anticorrosive paints.

1. "General Specifications for Ships of the United States Navy", Section 9190, Table 2, Note 2, outlines a formula for a suitable rust inhibitor for use where large areas of underwater body have been wet sand-blasted. MSTS Code 32, which has been specified in some instances, is a surface treatment material but is expensive in comparison with the rust inhibitor mentioned above.

**DISTINCTIVE MARKINGS APPLICABLE TO
MSTS CIVIL-SERVICE-MANNED SHIPS (USNS)**

1. Stack Markings. The upper portion of each stack of all MSTS civil-service-manned ships (USNS) shall be painted with the following distinctive MSTS stack banding: *

Top of the stack shall be painted black, MSTS Code 48, to a width of two-fifteenths (2/15) of the height of the stack. Immediately below the black band will be a band painted haze gray, MSTS Code 45, of a width of one-fifteenth (1/15) of the height of the stack (one-half the width of the black band). Immediately below the haze gray band there shall be painted a blue band, MSTS Code 46, the same width as the haze gray band. Below the blue band there shall be painted a yellow band, MSTS Code 47, the same width as the blue band. The remaining lower portion of the stack shall be painted haze gray, MSTS Code 45. Identify demarkation line between bands by welding beads. The foregoing banding must be applied regardless of color applied to ship's hull or stack.

2. Hull Markings. *

a. All MSTS ships (USNS) over 200' long shall have painted on each side of the bow the caption "U S NAVAL SHIP" directly above the ship's name. "U S NAVAL SHIP" will be in letters 10" high and $1\frac{1}{4}$ " in nominal thickness. A 6" vertical space will separate the caption "U S NAVAL SHIP" and the ship's name. The name will be painted in letters 15" high, with a nominal thickness of $1\frac{7}{8}$ ". Paint will be black, MSTS Code 48. On the stern of each ship will appear a similar legend; however, the vertical space between the caption "U S NAVAL SHIP" and the ship's name will be 24". Letters shall be outlined by welding beads.

b. ATA, AKL, LST and similar type ships less than 200' long shall have painted on each side of the bow the caption "U S NAVAL SHIP" over the letters and number and/or name designating the ship. The caption "U S NAVAL SHIP" will be 9" high. The letters and numbers designating the ship will be 12" high, and there will be a 12" vertical space between the two sections of the markings. The caption "U S NAVAL SHIP" will have a nominal thickness of $1\frac{1}{4}$ ", while the letters and numbers designating the ship will be 2" in nominal thickness. Paint shall be black, MSTS Code 48. On the stern of each ship will appear a similar legend and the vertical space between the caption "U S NAVAL SHIP" and the ship's designation will be 12". Letters and/or numbers shall be outlined by welding beads.

COMSTSINST 4750.1B CH-1
23 May 1966

- * 3. Draft Marks. Draft marks shall be painted on all ships. Over boot-topping (black) and/or antifouling paint use white paint MSTS Code 33. On surface above boot-topping and/or antifouling use black paint, MSTS Code 48. All numbers will be 6" high and the bottom of each number will coincide with the specific foot draft marking at that point. Numbers shall be outlined by welding beads.
4. Name Boards. Ships shall be equipped with name boards of teak or hardwood finished with spar varnish, MSTS Code 59, on which the name of the ship and border of board (without the caption "U S NAVAL SHIP") shall be painted with gold leaf or yellow, MSTS Code 47. Letters to be 12" high with $1\frac{7}{8}$ " nominal width where length of the name permits. In other cases, smaller letters compatible with the length of the name shall be used.
5. Ring Life Buoys and Lifefloats. All ring life buoys and lifefloats shall be painted international orange, using international orange plastic compound, MSTS Code 56. Three coats of compound are required to obtain coverage. Caution should be taken while using this compound as it is flammable.
- * 6. Deck Hatch Boards. Most hatch boards within a hatch are interchangeable. Interchangeable hatch boards shall not be color coded. Hatch boards within the same hatch that are not interchangeable and can be considered hazardous shall be color coded as follows:
- a. One stripe, $1\frac{1}{2}$ " wide shall be painted across the center of each board athwartship on both sides.
 - b. A color code approximately 12" square shall be painted inside the hatch coaming port and starboard adjacent to and corresponding to the color for each row of boards.
 - c. A different color shall be used for striping each row or rows of boards of different sizes. The following colors shall be used:
(1) Red - MSTS Code 65, (2) Blue - MSTS Code 46, (3) Yellow - MSTS Code 47.
7. Boom Tips. The outboard 6 feet of each boom located forward of the stack shall be painted white, MSTS Code 33. The outboard 6 feet of each boom located aft of the stack shall be painted black, MSTS Code 48.
8. Insignia. Painting of insignia or distinctive markings on stack or hull, other than indicated above, is prohibited.

(2) Lower 'Tween Deck.

(a) First section of hatch boards, two stripes $1\frac{1}{2}$ " wide and 2" apart.

(b) Second section, two pairs of stripes $1\frac{1}{2}$ " wide and 2" apart, each pair 6" apart.

(c) Third section, three pairs of stripes $1\frac{1}{2}$ " wide and 2" apart, each pair 6" apart.

b. Identification of hatches shall be accomplished by use of a color code as follows:

(1) Number 1 hatch - red stripes MSTTS Code 65.

(2) Number 2 hatch - white stripes MSTTS Code 33.

(3) Number 3 hatch - blue stripes MSTTS Code 46.

(4) Number 4 hatch - yellow stripes MSTTS Code 47.

(5) Number 5 hatch - green stripes MSTTS Code 64.

(6) Additional hatches - same sequence of color, starting with red stripes.

c. A color code approximately 12" square shall be painted inside the hatch coaming, port and starboard for each hatch corresponding to the hatch board markings.

d. Hatch beams shall be marked in accordance with this basic plan corresponding to the hatch section in which they belong.

7. Boom Tips. The outboard 6 feet of each boom located forward of the stack shall be painted white, MSTTS Code 33. The outboard 6 feet of each boom located aft of the stack shall be painted black, MSTTS Code 48.

* 8. Insignia. Painting of insignia or distinctive markings on stack or hull, other than indicated above, is prohibited.

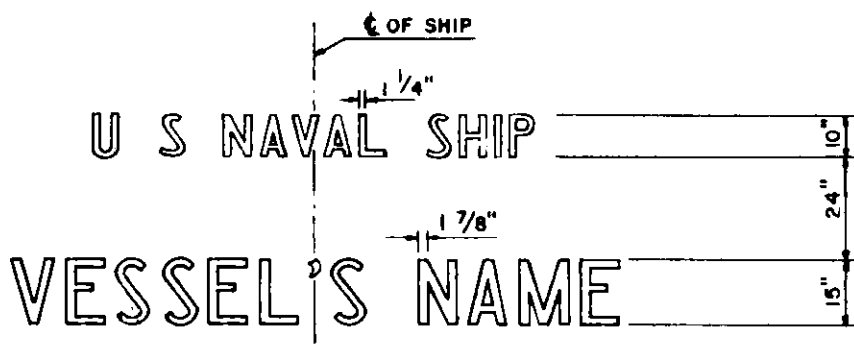


BOW MARKING

BOW MARKING - STARBOARD SHOWN, PORT TO OPPOSITE HAND.

TWO (2) SETS REQUIRED PER SHIP.

PAINTING - BLACK, NAVY FORMULA*24 - SPEC MIL - P-698.



STERN MARKING

(a) CRUISER TYPE STERN - STARBOARD SHOWN, PORT TO OPPOSITE HAND

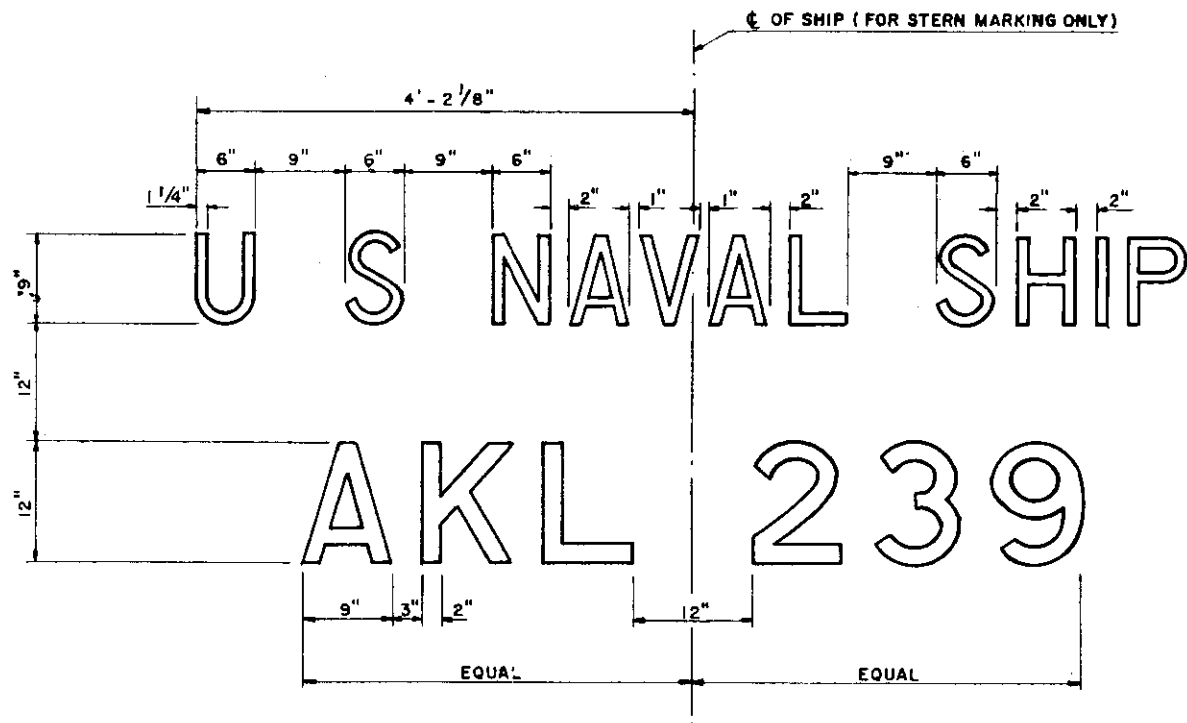
TWO (2) SETS REQUIRED PER SHIP.

(b) FANTAIL TYPE STERN - MARKING ON CL OF SHIP LOOKING FWD

ONE (1) SET REQUIRED PER SHIP.

PAINTING - BLACK, NAVY FORMULA*24 - SPEC MIL - P-698

APPLICABLE FOR USNS TRANSPORTS, TANKERS AND CARGO SHIPS WITH NAMES AND OVER 200' LONG.



STERN MARKING

STERN MARKING ON $\frac{1}{2}$ OF SHIP LOOKING FWD.

ONE (1) SET REQUIRED PER SHIP.

PAINTING - BLACK, NAVY FORMULA #24 - SPEC MIL-P-698.

BOW MARKING

BOW MARKING - STARBOARD SHOWN, PORT TO OPPOSITE HAND.

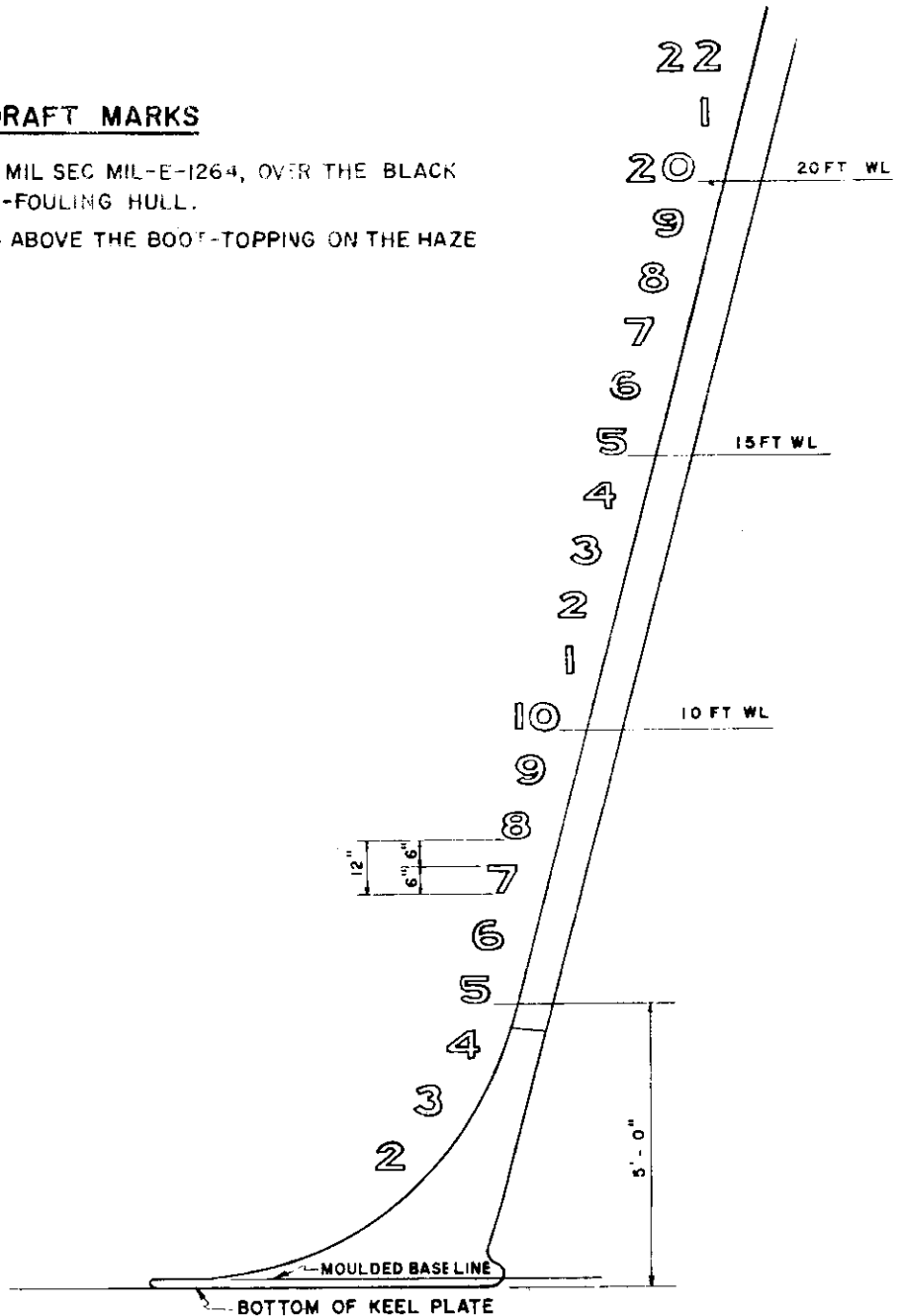
TWO (2) SETS REQUIRED PER SHIP.

PAINTING - BLACK, NAVY FORMULA #24 - SPEC MIL-P-698.

APPLICABLE FOR USNS AKL, ATA, LST, YO, ETC. TYPE SHIPS
WITH NUMBERS IN LIEU OF NAME OR BELOW 199' LONG.

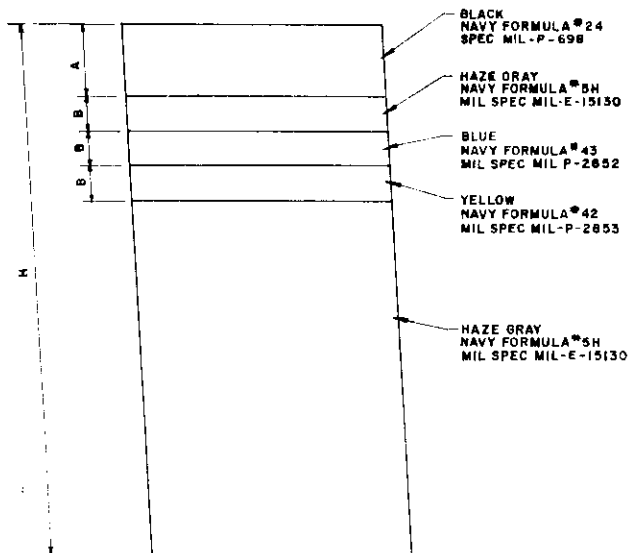
PAINING DRAFT MARKS

1. WHITE, NAVY FORMULA*6, MIL SEC MIL-E-1264, OVER THE BLACK (BOOT-TOPPING) AND ANTI-FOULING HULL.
2. BLACK, NAVY FORMULA*24 ABOVE THE BOOT-TOPPING ON THE HAZE GRAY SURFACE.



DRAFT MARKS AT BOW

20-1-10-10-10

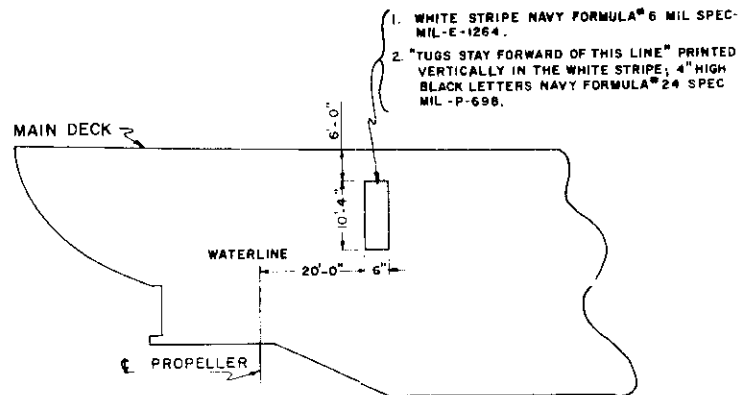


STACK LEGEND

H - HEIGHT ABOVE CASING
A - $\frac{2}{15} H$
B - $\frac{1}{15} H$

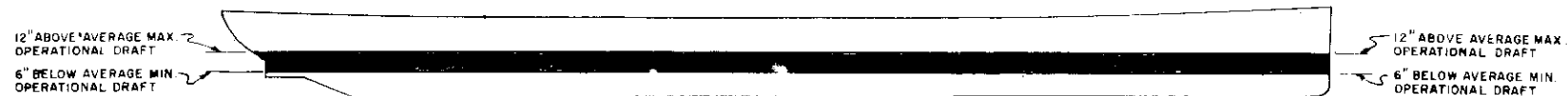
PAINTING OF STACKS

COMUSINST 4750.1B
5 March 1965



TYPICAL TUG WARNING SIGN

(TWIN SCREW SHIPS ONLY)



TYPICAL BOOT-TOPPING SKETCH

BLACK BOOT-TOPPING PAINT - 2 COATS COML MARINE

5 Mar 1965

INSTRUCTIONS FOR LIFEBOAT PAINTING AND PRESERVATION

1. Appreciable reduction in maintenance costs has been realized in recent years through use of vinyl alkyd paints for MSTs lifeboats. The slightly higher initial cost and the added precautions necessary for safe application are well justified by the increased service life and long-range preservative properties of a well-designed vinyl alkyd system.

2. It is essential that these special painting instructions be carefully followed for the painting of and touch-up of vinyl alkyd painted surfaces of all lifeboats.

a. Preparation of Surfaces. The abrasive blasting process shall be used in removing deteriorated paint and rust from metal surfaces whenever manual methods (wire-brushing and scaling) are inadequate. Sandblasting is not approved. Precaution is essential when blasting steel material to insure that the galvanized coating is not penetrated. All surfaces, whether wood or metal, shall be cleaned and free from grease, scale, and loose dirt.

b. Painting of Metal Surfaces. Galvanized steel surfaces requiring complete repainting (after surface preparation) shall be given:

(1) One coat of wash primer, MSTs Code 32.

(2) Two coats of red-lead primer, MSTs Code 31.

(3) For the exterior hull, the final finish shall consist of two coats of Gray, No. 27, MSTs Code 29.

(4) The interior hull surfaces, except as noted in 2.e.(5) below, shall be given two coats of Gray No. 7, MSTs Code 30 or two coats of equivalent formula with international orange pigmentation, color No. 12197 of Fed. Std. 595, MSTs Code 55.

(5) The release lever shall be painted bright red, MSTs Code 4 with one inch wide band of luminous tape (FSN #D8305-276-9580) around the handle end. The raised letters on the lever shall be painted white, MSTs Code 33. The background areas of hull and footings immediately below and for a distance of six inches adjacent to the release lever in the closed position shall be painted white, MSTs Code 26.

c. Aluminum boats shall be given the same coatings except that two coats of vinyl zinc chromate primer Navy formula 120, Specification MIL-P-15930 will be used in lieu of the red lead primer.

Enclosure (6)

5 Mar 1965

d. Touch-Up Painting of Metal Surfaces. Lifeboats requiring only minor touch-up of vinyl-alkyd paints shall be repainted in accordance with accepted procedure for such painting. In touching up these paints, care will be exercised not to remove paint which is firmly adhering to the metal surfaces. Usually one coat of red lead primer or zinc chromate in the case of aluminum boats followed by two coats of the vinyl alkyd finish paint will be sufficient when the bare metal is not uncovered. When it is uncovered the full painting of the exposed metal will be necessary as required in subparagraphs 2.b. and 2.c. above.

e. Painting of Wooden Surfaces. Wood surfaces requiring complete repainting (after preparation) shall be given:

(1) A treatment (by brush application) with copper naphthenate wood preservative, MSTs Code 62.

(2) One coat of pretreatment wash primer, MSTs Code 32.

(3) One coat of red lead primer, MSTs Code 31.

(4) Two coats of vinyl alkyd Specification MIL-P-15130 with international orange pigmentation to match color No. 12197 of Fed. Std. 595, MSTs Code 55 shall be applied for the final finish.

(5) For those lifeboats stowed forward and below the navigation bridge (such as aboard certain C3-S1-A3 class ships) the lifeboats interior wooden surfaces shall have a final finish of two coats vinyl alkyd paint, Gray No. 7 (122-7), MSTs Code 30. (See NOTE below)

f. Touch-Up Painting of Wooden Surfaces. Loose and deteriorated paint shall be removed by scraping, care being exercised not to remove paint which is firmly adhering to the wooden surface. One coat of the international orange should be sufficient to cover small spots where the wood is not exposed. Where large areas of the wood surface are exposed, treatment with preservative and wash primer followed by a final coat of international orange will be required.

3. Precautions.

a. A minimum drying time of 48 hours between finish coats is necessary. Red lead primer, vinyl, MSTs Code 31, or vinyl alkyd finish coats, MSTs Code 29 and 30 shall not be applied to bare metal or wood surfaces.

b. Since the solvents used are highly flammable, the following precautions are quoted:

"The solvents used as components in the formulations of the paints composing the vinyl system are:

wash primer	ethyl alcohol
vinyl primer	methyl-isobutyl-ketone and toluene
vinyl alkyd paints	methyl-isobutyl-ketone and xylene

"These are more volatile and more flammable than those in other paints. Their vapors can produce physiological and toxic effects if breathed continuously for long periods, but no more so than results from previously used paint coating solvents. All precautions and safety measures pertaining to flammable materials, such as no smoking, welding, burning in the immediate areas, grounding of spray equipment and elimination of chipping and other spark producing operations, should be enforced. Proper gas masks or respirators for spray hands and proper ventilation (of the explosion-proof type) especially in confined spaces should be utilized."

c. The materials listed below shall not be carried in ships' paint stores. These paints all contain highly volatile ingredients, with flash points below the acceptable limit established by the U.S. Coast Guard (Dangerous Cargo Regulations CG 187, Section 147.05-100) for ship stores.

<u>Material</u>	<u>MSTS Color Code</u>	<u>Federal Stock Number</u>
Wash Primer Pretreatment (117)	32	8010-664-4966
Red Lead Primer Vinyl (119)	31	8010-290-0373
Vinyl-Zinc Chromate Primer (120)	51	8010-290-0374
Vinyl Alkyd Gray, No. 27 (122-27)	29	8010-634-7324
Vinyl Alkyd Gray, No. 7 (122-7)	30	8010-285-7013

d. Commercial vinyl alkyd paints as approved and specified in subparagraphs 1.b.(3)(e) of enclosure (1) (for deck surfaces subject to excessive wear) are also authorized for maintenance of lifeboats. International orange vinyl paint for inner surfaces of lifeboats shall conform to Federal Standard (595) No. 12197 for color. A sufficient amount of these approved commercial paints shall be carried in ships' stores to enable ships' forces to undertake maintenance and touch-up at sea.

NOTE: The international orange color used on lifeboats located forward of the wheelhouse aboard certain C3-S1-A3 ships interferes with efficient navigation by reflecting light.