

MILITARY SEA TRANSPORTATION SERVICE, PACIFIC
NAVAL SUPPLY CENTER
OAKLAND, CALIFORNIA 94625

SPECIFICATION NUMBER: MSTSP 70-74

9 March 1970

S P E C I F I C A T I O N S

For

DRYDOCKING - INACTIVATION

USNS GEN. JOHN POPE (T-AP 110)
(Principal Dimensions)

Length - - - - -	662' 7"
Breadth- - - - -	75' 6"
Depth - - - - -	51' 6"
Gross Tonnage - - - - -	17,558
Displacement - - - - -	13,720 Tons
U.S. Maritime Commission Design - - - -	P2-S2-R2

The General Conditions dated 15 July 1955 and Amendment No. 1 dated 23 November 1962 to the General Conditions for work under Department of Defense, Department of the Navy, Master Contract for Repair and Alteration of Vessels are a part of these specifications and any conflict between these specifications and the Master Contract for Repair and Alteration of Vessels shall be governed by the provisions of the Master Contract.

These specifications consist of the following pages:

Index: Page A
Information Sheet: Page 2
Plan List: Page 3
Pages: 001-1 through 00-2 (A total of 2 pages)
Pages: 901-1 through 913-1 (A total of 15 pages)

Approved: Dir., Transport/Tanker/Oceanographic Engr. Div.

Approved: Supt. Port Engineer

Geo. P. Naulen
J. J. Speer

I N D E X

CATEGORY "A" ITEMS

<u>ITEM</u>	<u>TITLE</u>	<u>PAGE</u>
	INFORMATION SHEET	2
	LIST OF PLANS	3
001	SERVICES	001-1
002	TELEPHONES AND GARBAGE	002-1
901	DELIVERY AND DRYDOCKING	901-1
902	PAINTING UNDERWATER BODY	902-1
903	CHAIN LOCKER SUMP	903-1
904	SEA CHEST, STRAINERS, AND OVERBOARD DISCHARGES	904-1,3
905	FORE PEAK, AFT PEAK & DISTILLED WATER TANKS	905-1
906	CLEANING OF COMPARTMENTS	906-1
907	RUDDER	907-1
908	STERN GLAND STUFFING BOXES	908-1
909	CATHODIC PROTECTION STUDS	909-1
910	SIDE PORT DOOR	910-1
911	PAINTING OF PROPELLERS	911-1
912	FATHOMETER SEA CHEST	912-1

CATEGORY "B" ITEM

INDEFINITE	
ITEM 913 -	CRANE SERVICES
	913-1

INFORMATION REGARDING THE INVITATION FOR BIDS INCLUDING THESE SPECIFICATIONS

Prior to the time of bid opening and after award of job order, inquiries should be directed to one of the following:

Procurement and Contractual Matters
(Engineering Office)

<u>Title</u>	<u>Telephone</u>
Director, Procurement & Control Division	466-5185
Head, Contract Branch	466-5185

Legal Matters
(Office of Counsel)

<u>Title</u>	<u>Telephone</u>
Assistant Counsel	466-6481
Counsel	466-6481

Engineering and Technical Matters
(Engineering Officer)

<u>Title</u>	<u>Telephone</u>
Deputy Engineering Officer	466-6955

Statement of Manufacturer's Representative

On any specification item which calls for supervision by the manufacturer's representative the following shall be strictly complied with:

Submit a statement of supervision exercised by the representative, prepared and signed by the representative. The statement shall include certification of work actually performed and certification either that work was performed to the satisfaction of the representative, or that work deficiencies, explicitly identified by the manufacturer's representative, exist. The original plus four copies of each statement shall be delivered to the MSTSP Inspector.

Overtime Policy

The Contracting Officer may require of the Contractor's statement in writing regarding the need for overtime in the performance of the contract in the event of the issuance of a Change Order or a Supplemental Agreement for extra work. No overtime premium pay shall be considered in the price or equitable adjustment to be paid by the Government on account of the Change Order or a Supplemental Agreement unless authorized by the Contracting Officer.

The following list of plans form a part of these specifications.

<u>ITEM NO.</u>	<u>PLAN NUMBER</u>	
901	AP 112-S0701-51602 MSTSPAC FILE NO. 2221	"DOCKING PLAN"
904	G.T. 120-1067765 MSTSPAC FILE NO. 11169	"OUTBOARD BLANKING OF SEA CHESTS (WELDED TYPE)"
904	800-PAC-C1231	"FLOATATION FLOODING MARKER FOR LAY-UP"
912	T-AP 113-800-1176286 MSTSPAC FILE NO. 800-PAC-10425	"TRANSDUCER COVER PLT"

CATEGORY "A" ITEMS

ITEM 001 - SERVICES: (MAC)

Upon arrival of the ship in the Contractor's plant, the Contractor shall provide the following services for a period of six (6) continuous calendar days.

(a) ELECTRIC POWER

Provide adequate lighting for all compartments and spaces 120/240 volts DC 500 amps minimum.

(b) VENTILATION

Provide portable blowers for ventilation as required for the safety of contractors assigned working personnel during the inactivation of the ship.

(c) FIRE PROTECTION

Provide temporary fire protection independent of the ship's facilities.

(d) TEMPORARY PUMPING FACILITIES

Provide temporary but adequate means for pumping of bilges, shaft alley and other spaces subject to collection of water.

At the time of the ships departure from Contractor's plant, all circuit breakers and switches on the main switchboard shall be left in their open positions.

CATEGORY "A" ITEMS

ITEM 002 - TELEPHONES AND GARBAGE: (MAC)

During the entire period while the ship is in the contractor's plant, the contractor shall furnish the following services.

Garbage and Debris Removal:

Remove, on a daily basis, all garbage and debris generated by the ship.

Telephones (3)

One (1) twenty-four hour telephone for official use only at ships access, at the established quarter deck,

Two (2) telephones through the contractor's plant switchboard during regular work day hours as follows:

One (1) in the Captain's Office

One (1) in the MSTS Inspector's Office

CATEGORY "A" ITEMS

USNS POPE (T-AP 110)
MSTSP 70-74

ITEM 901 - DELIVERY AND DRYDOCKING: (MC)

A suitable drydock shall be furnished by Contractor and ship placed in same for accomplishment of all work specified in individual items of these specifications or any additional work found necessary which can be accomplished during the ship's availability.

The ship will proceed to and from the Contractor's yard under its own power or with the assistance of tug boats without expense to the Contractor.

Ballast conditions, trim weights, draft, etc., shall be carefully checked by the Contractor, prior to drydocking of the ship.

The Contractor shall accomplish all work to trim the ship, as required for drydocking.

Obtain the ship's keel block record for its last drydocking, from ship.
DO NOT duplicate the previous drydocking position.

Furnish a record sketch, in quadruplicate, showing the new locations and widths of the keel blocks to the MSTS Inspector.

The Contractor shall haul in and/or off load all ships mooring lines, coil and place on Government ~~Furnished~~ transportation at departure of ship from Contractor's yard.

CATEGORY "A" ITEMS

ITEM 902 - PAINTING UNDERWATER BODY: (MAC)

Reference (a) MSTS Plan 800-PAC-C-1231 Floatation Flooding Marker For Lay-Up.

Prepare surfaces and paint underwater body, rudder and all appendages from the keel to four (4) feet above line of delivery floatation.

Line of delivery floatation shall be established as draft of the ship minus one (1) foot, on arrival at Contractors plant.

Remove all marine growth, scale, rust, paint, which is not firmly bonded to hull, grease, and all other foreign matter, to bare metal, or firm paint film, by sand blast.

Wash down all areas with fresh water prior to applying primer to hull.

Clean and grease the fathometer plates prior to painting.

After surfaces of the hull have been prepared, paint the entire underwater body surface with two (2) coats of anti-corrosive paint, Maritime Specification 52-MA-401 D MSTS color Code 38

No anti-fouling paint shall be applied.

Apply four (4) coats of cold tar epoxy, of not less than 14 mils in total thickness, on the entire hull from four (4) feet above down to two (2) feet below the line of floatation.

Paint in six (6) inactivation floatation markers in accordance with plan Reference (a) one (1) foot above the line of floatation, in the following locations.

One each port and starboard, forward at the bow.

One each port and starboard, aft on the stern frame.

One each port and starboard on the trailing edge of the rudder

Repaint all ships draft marks fore and aft.

CATEGORY "A" ITEMS

ITEM 903 - CHAIN LOCKER SUMP: (MAC)

Open the chain locker sumps, below the chain locker gratings and remove all mud, dirt, water and debris.

Remove all loose adhering paint by scraping, scaling and wire brushing.

After cleaning has been accomplished and inspected by MSTS Inspector, all interior surfaces of the sumps shall be given one (1) coat of Bituminous Emulsion, MSTS Color Code 61.

CATEGORY "A" ITEMS

ITEM 904 - SEA CHEST, STRAINERS, AND OVERBOARD DISCHARGES: (MAC)

Reference (a) Plan No. G. T. 120-1067765 titled, "Outboard Blanking of Sea Chests (Welded Type)."

Reference (b) Plan No. AP 112-S0701-501602 titled, "Docking Plan."

Remove all sea chest strainer plates. Clean and paint as specified in another item in these specifications titled, "Painting Underwater Body". Thoroughly clean the interior of the sea chests to clean bare metal.

Examine the strainer securing lugs on the sea chests and install new lugs and studs as directed by the MSTS Inspector to replace defective units found. An estimated amount of ten (10) lugs and ten (10) studs shall be installed.

Flush with fresh water all sea chests, sea valves, steaming out valves and adjacent connecting piping and leave in dry condition.

Completely close all sea valves and steaming out valves for sea chests.

Wire all valves in the closed position.

Hammer test all accessible surfaces of all sea chests after cleaning and prior to painting.

The tests shall be conducted in the presence of the MSTS Inspector.

A written report shall be submitted in quintuplicate of any deficiencies found. Submit report to the MSTS Inspector.

Paint the interior of the sea chests with two (2) coats of Apexior No. 3 or equal as approved, and reinstall the strainer plates.

Replace the holding nuts and individually thread a wire through cotter key holes and around each lug to prevent loosening and loss of nuts.

On completion of the foregoing and when notified by the MSTS Inspector, install mild steel blanking plates over each of the sea chests and hull openings, for the sea injection and discharges, also for all sea valves and overboard discharges below the waterline. Blanking plates shall be fabricated using reference (a) and (b) for guidance only.

All blanking plates shall be fabricated from one-half ($\frac{1}{2}$) inch mild steel plate Specification MIL-S-16113.

Prepare the surfaces and paint internal surfaces of blanks with one coat of red lead MSTS color Code. 31.

CATEGORY "A" ITEMS

ITEM 904 - SEA CHEST, STRAINERS, AND OVERBOARD DISCHARGES: (CONTINUED)

Paint exterior surfaces of blanking plates as specified in another item in these specifications titled "Painting Underwater Body."

Fit each blanking plate with a half-inch ($\frac{1}{2}$) air test fitting consisting of a welded boss and standard pipe plug.

Air test all blanks with sea valves closed to 5 PSI.

All blanking plates extending within the area, from two (2) feet below to four (4) feet above the floatation line shall be flush type.

Flush type blanks shall be used on all six (6) inches in size or smaller sea connections.

Seal weld all air test fitting pipe plugs on completion of air testing.

Systems to be dealt with shall include but not limited to the following list for guidance.

<u>FWD FIRE PUMP ROOM</u>				<u>EVAPORATOR FLAT</u>			
Fire Pump Suct	8"	Gate	10 P	#1 Brine Ov'bd	6"	Gate	122 P
Steaming Out	3/4"	Globe	10 P	#2 Brine Ov'bd	6"	Gate	122 P
Diesel Eng				Subm Pump Ov'bd	5"	Globe	125 P
Cooling Suct	1-1/2"	Globe	10 P	(Air Controller)			
Bilge Sump Ov'bd	1-1/2"	Globe	20 P	Clean Ball Suct	5"	Globe	123 P
<u>FWD ENGINE ROOM</u>				Fire Pump Suct	12"	Gate	122 P
Boiler Blow Ov'bd	2"	Stp-Ck	102 S	Steaming Out	1"	Globe	122 P
Blr Blow Evap Ov'bd	3"	Stp-Ck	102 S	Laundry Drain	5"	Gate	122 P
Bilge Pump Ov'bd	5"	Stp-Ck	113 S	<u>AFT ENGINE ROOM</u>			
Feed Pump Oil				Feed Pump Oil			
Cooling Ov'bd	1"	Gate	104 S	Cooling Ov'bd	1"	Globe	130 S
Comb Contr Air				Aux Circ Suct	12"	Gate	131 S
Cooling Ov'bd	3/4"	Gate	106 S	Steaming Out	1"	Globe	131 S
Mn. High Inject	16"	Gate	106 S	Sanit Pump Suct	3-1/2"	Globe	131 S
Steaming Out	1"	Globe	106 S	Fire Pump Suct	6"	Gate	131 S
Mn. Low Inject	20"	Gate	105 S	#3 Aux Circ Ov'bd	8"	Gate	135 S
Steaming Out	1"	Globe	105 S	#4 Aux Circ Ov'bd	8"	Gate	135 S
Emer Bilge Suct	14"	Globe	107 S	Bilge Pump Suct	8"	Gate	142 S
LO Cooler Ov'bd	5"	Gate	112 S	Steaming Out	1"	Globe	142 S
Main Circ Ov'bd	20"	Gate	113 S	Contam Evap Ov'bd	2"	Stp-Ck	142 S
A/C Circ Ov'bd	10"	Gate	105 P	Blr Blow Evap Ov'bd	3"	Stp-Ck	130 P
Contam Evap Ov'bd	2"	Stp-Ck	106 P	Boiler Blow Ov'bd	2"	Stp-Ck	130 P
A/C Circ Suct	12"	Gate	108 P	Bilge Pump Ov'bd	5"	Stp-Ck	131 P
Steaming Out	1-1/2"	Globe	108 P	Main Low Inject	20"	Gate	133 P
Bilge Pmp Sea Suct	8"	Gate	110 P	Steaming Out	1"	Globe	133 P
Steaming Out	1"	Globe	110 P	Sea Chest Vent	1-1/2"	Globe	133 P
#1 Aux Circ Ov'bd	8"	Gate	113 P	Emer Bilge Suct	14"	Globe	135 P
#2 Aux Circ Ov'bd	8"	Gate	113 P	Main High Inject	16"	Gate	134 P
Aux Circ Suct	12"	Gate	116 P	Steaming Out	1"	Globe	134 P
Steaming Out	1"	Globe	116 P	Comb Contr Air			
Sanit Pump Suct	3-1/2"	Globe	116 P	Cooling Ov'bd	3/4"	Globe	134 P
Fire Pump Suct	6"	Gate	116 P	Main Circ Ov'bd	20"	Gate	140 P
				LO Cooler Ov'bd	5"	Gate	139 P

CATEGORY "A" ITEMS

ITEM 904 - SEA CHEST STRAINERS, AND OVERBOARD DISCHARGES: (CONTINUED)

REEFER FLAT

Reefer Circ Suct	5"	Stp-Ck	119 S
Steaming Out	1"	Globe	119 S
Dirty Ball, Ov'bd	5"	Globe	122 S
Reefer Circ Ov'bd	4"	Stp-Ck	125 S
Freon Ov'bd	1"	Globe	127 S

SHAFT ALLEY

Stern Tube Flush	1"	Globe	205 S
Bearing Cool Ov'bd	2"	Gate	194 S
D. Fire Pump Suct	8"	Gate	190 P
Steaming Out	1"	Globe	190 P
D. Eng. Cool Suct	1-1/2"	Globe	190 P
Bearing Cool Ov'bd	2"	Stp-Ck	194 P
Stern Tube Flush	1"	Globe	205 P

AFT FIRE PUMP ROOM

Bilge Sump Ov'bd	1-1/2"	Globe	187 P
------------------	--------	-------	-------

CATEGORY "A" ITEMS

ITEM 905 - FORE PEAK, AFT PEAK AND DISTILLED WATER TANKS: (MAC)

While the ship is in drydock, remove the bleeder plugs and drain the fore and aft peak tanks and the distilled water tank.

Remove the manhole covers and wash down internals of tanks.

Remove all remaining water, mud, scale, dirt and debris from tanks and thoroughly dry out tanks.

Fit each manhole opening with heavy gauge steel expanded metal bound all around with a 1½-inch by 3/16-inch steel angle shaped to fit over the bolt circle of the manhole cover securing studs. Install a No. 16 USSG galvanized steel spool piece through the tack welded to the expanded metal manhole covers, to receive the vinyl coated wire inserted airtight vent ducts. Secure each expanded metal cover to the manhole studs with four (4) existing nuts.

Stow existing manhole covers adjacent to their respective manholes.

TANK CAPACITY

Fore Peak	A-1W	152.9 tons
After Peak	C-1W	126.2 tons
Distilled water	B-906-W	21.7 tons

CATEGORY "A" ITEMS

ITEM 906 - CLEANING OF COMPARTMENTS: (MAC)

Thoroughly clean all interior spaces throughout the ship entered to accomplish work to overhaul sea valves, reach rods, draining of tanks or any other work specified in these specifications.

Cleaning shall include removal of all water, debris, grease, oil, residue, rags, dust and litter.

Sweep down all areas entered, broom clean.

All work shall be to the satisfaction of the MSTS Inspector.

All water closets, commodes, urinals and their associated traps and piping, soiled or used by the Contractor's personnel for any purpose shall be thoroughly cleaned and dried prior to the ship leaving the Contractor's Yard.

CATEGORY "A" ITEMS

ITEM 907 - RUDDER (BK)

Rudder gland shall be tightened to prevent any leakage.

Remove drain plug to prove rudder free of water, reinstall plug and air test rudder to five (5) pounds air pressure. Repair leaks, as found, and prove rudder tight.

Fill and drain rudder upon completion of repairs (if any), using U.S. Government furnished rust preventive compound.

USNS POPE (T-AP 110)
MSTSP 70-74

CATEGORY "A" ITEMS

ITEM 908 - STERN GLAND STUFFING BOXES: (BK)

Tighten the port and starboard stern gland stuffing boxes to prevent any leakage.

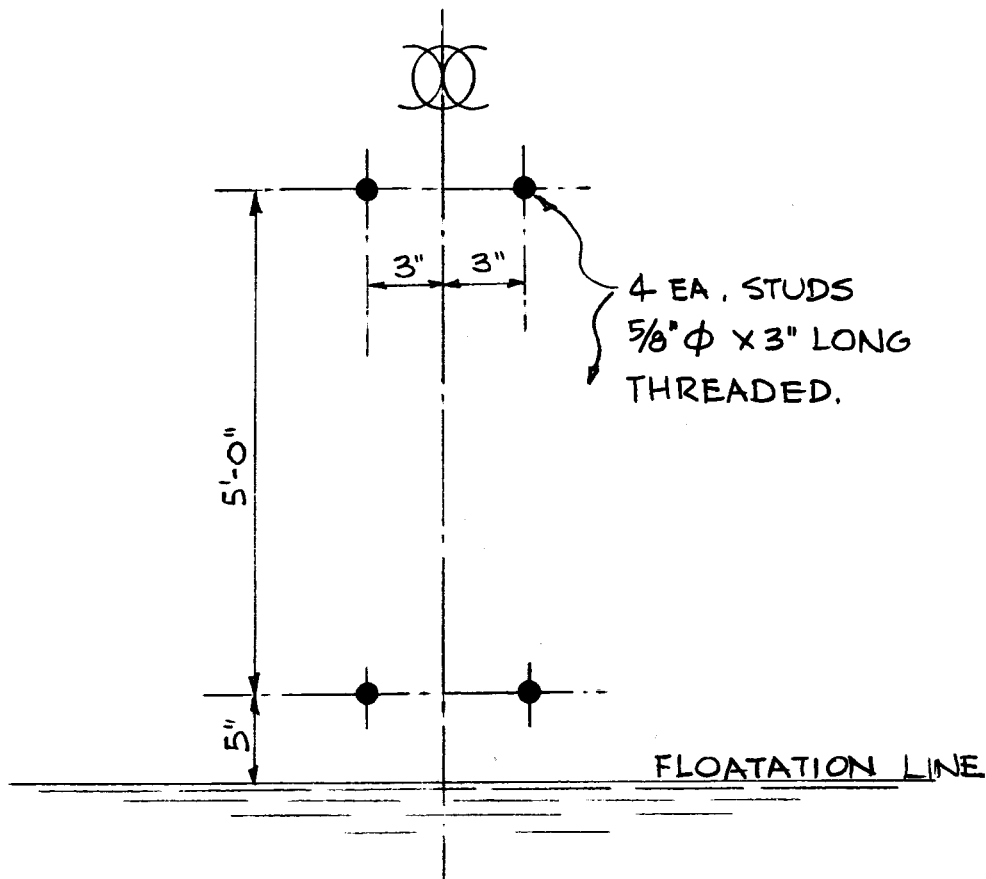
CATEGORY "A" ITEMS

ITEM 909 - CATHODIC PROTECTION STUDS: (MAC)

LOCATION: Midship centerline, Port and Starboard

Install eight (8) each, 5/8-inch diameter, mild steel studs, welded to the outboard side of the shell plating, four (4) each, port and four (4) each starboard in the location and pattern shown in sketch below.

Include one (1) each brass nut and washer with each stud.



CATEGORY "A" ITEMS

ITEM 910 - SIDE PORT DOOR: (LJM)

Open one (1) sealed side port door for access to ship during drydocking period.

On completion of all work and prior to undocking ship, seal the side port door used for access, as follows.

Free up and chase damaged threads on all dog studs.

Straighten all damaged dogs.

Clean all gasket faces and gasket bearing surfaces by removing all sealers, paints, oil, grease, and rust. Including all previously sealed cracks, voids, and crevices.

Coat all gasket faces and gasket bearing surfaces with adhesive equal to specification MIL-A-5092 (AER).

When the applied adhesive is tacky and free of any foreign matter, close the side port door and tightly dog down.

On completion of the above seal all inboard and outboard voids, cracks, and crevices all around, with a caulking gun applied sealer equal to specification MIL-C-19869-B.

NOTE: This door has been previously sealed in the manner specified above.

USNS POPE (T-AP 110)
MSTSP 70-74

CATEGORY "A" ITEMS

ITEM 911 - PAINTING OF PROPELLERS: (MAC)

Clean the port and starboard propellers to bright metal and paint all surfaces with four (4) coats of anti-corrosive paint Maritime Specification 52-MA-401b, MSTSP Color Code 38.

CATEGORY "A" ITEMS

ITEM 912 - FATHOMETER SEA CHEST: (CL)

Install transducer cover plates (2) as per MSTIS guidance Plan TAP 113-800-1176286 Detail "B", MSTSPAC File Number 800-PAC-10425. Drill and tap existing mounting rings to suit. Install with 1/4" rubber gasket and CRS bolts.

Install stowage racks for cover plates in area of cofferdams.

CATEGORY "B" ITEMS

INDEFINITE

ITEM 913 - CRANE SERVICES: (MAC)

Submit a separate bid price to provide from time to time, as requested by the MSTS Inspector, the services of a crane, crane operator and three (3) slingmen to remove equipment and/or stores from any weather deck or cargo hatch of the ship to dock and load on Government furnished transportation. Equipment and/or stores to be removed from the ship will be placed on pallets on weather decks or in an accessible area of hatch openings.

A total of eight (8) hours of the foregoing services will be used to evaluate the bid.

BID PRICE PER HOUR \$ _____