

S	65	SMOKE DETECTING # 2	BLOWER MOTOR	A.F.F.		
INDEX	UNIT	SERVICE			CARD NO.	
Location: Deck	Frame	Compt.	Position Top Wheel House			
Manufacturer	Janett Mfg. Co.	Contract No.	Mfg. Dwg. No.	Date Mfg.		
Voltage	230	Phase	D.C.	Cycles	Amps.	1.4
Power Rating	HP 1/8	RPM	3200	Serial No.	376565	
Model No.	Type	Class	Form	Mo. Fr.		
Exc. Volts	Res.	Winding	Enclosure: W. T.	N. W. T.	D. P.	
Duty	Load	Time	Temp. Rise	C°		
Bearings: Type	Sleeve	No. Fwd.	No. Aft	Spare Parts Box No.		
Plan No.	S. O. No.	Dwg. No.	Pressure: Cut In	Cut out		
Navy Spec. No.	Pc. No.					

DATE	REMARKS	HRS. IN USE
10/10/53	Replaced bearings.	
7-2-54	<i>7-2-54</i>	
9-4-54	<i>Installed 1 new brush, and serviced</i>	
1965	Reactivation. See Spec. No. MSTSP 66-16	
9-66	COMPLETE OVERHAUL	
6-66	CHECKED BRUSHES & OILED BEARINGS	
8-66	" " " "	
10-66	" " " "	
12-66	" " " "	
2-67	COMPLETE OVERHAUL	
3-67	CHECKED BRUSHES - OILED BEARINGS	
6-67	" " " "	

DATE

REMARKS

HRS. IN USE

10-68

Pulled mtr. undercut comm. - cleaned - new brushes - placed back in service

FEB 68

TWO NEW SLEEVE BEARINGS

6/69

CLEANED OUT ALL CARBON DUST AND RENEWED BRUSHES.

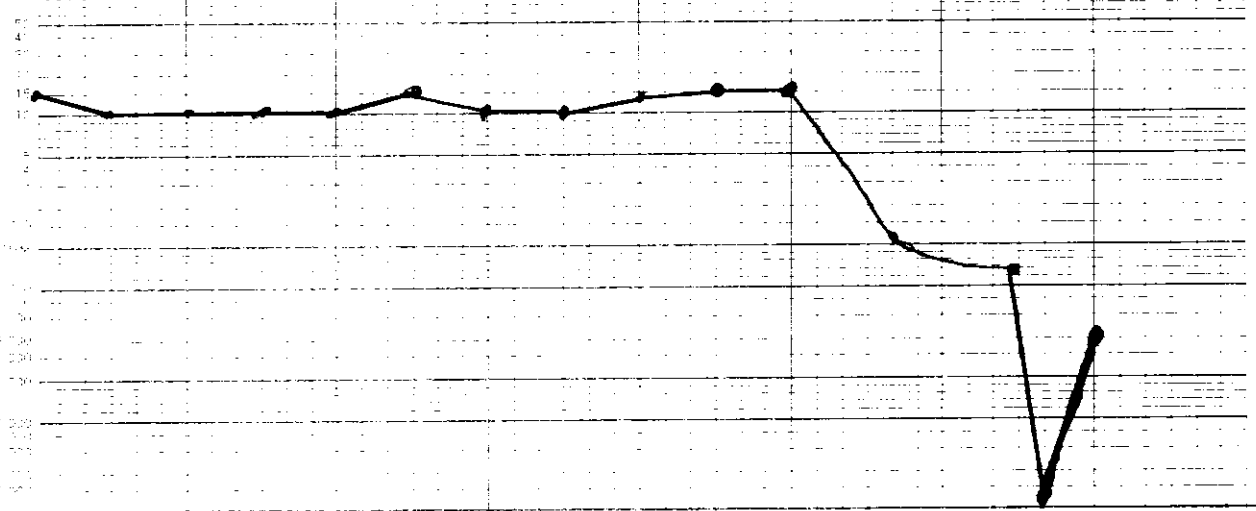
U. S. GOVERNMENT PRINTING OFFICE 16-52905-1

PLUG ONLY INDICATION
DEFICIENCIES (AS FAR AS WHICH
HAVE BEEN CORRECTED TO

73 343 1500 250
53 220 1500 250
53 220 1500 250

MFG. CHIMS

IN ACCORDANCE WITH
REVISION MANUAL CHAPTER



6/69 CLEANED OUT ALL CARBON DUST
IN MOTOR

Q A T M

OHMS

PLUG ONLY IN-CULATION
RESISTANCE VALUES WHICH
HAVE BEEN CORRECTED TO

MESD-M

MELCOHIMS

NO. C. IN ACCORDANCE WITH
40-REHS. MANUAL CHAPTER
10.

100 200 300 400 500 600 700 800 900 1000

FEB MAY AUG NOV FEB MAY AUG NOV FEB MAY AUG NOV FEB MAY AUG NOV FEB

INDEX

UNIT

CARD No.

S 65		SMOKE DETECTING # 1 BLOWER MOTOR FWD.		SERVICE		CARD NO.
INDEX	UNIT					
Location:	Deck	Frame	Compt.	Position	Top Wheel House	
Manufacturer	Janett. Mfg. Co.		Contract No.	Mfg. Dwg. No.	Date Mfg.	
Voltage	230	Phase	Cycles	Amps. 1.4	PF	
Power Rating	HP 1/8	RPM 3200	Serial No.	C. R. No.		
Model No.	Type	Class	Form	Mo. Fr.		
Exc. Volts	Res.	Winding	Enclosure: W. T.	N. W. T.	D. P.	
Duty	Load	Time	Temp. Rise	C°		
Bearings: Type	No. Fwd.	No. Aft	Spare Parts Box No.			
Plan No.	S. O. No.	Dwg. No.	Pressure: Cut In	Cut out		
Navy Spec. No.	Pc. No.					
DATE	REMARKS					HRS. IN USE
8/28/52	Turned down armature.					
11/ 9/53	Replaced bearings.					
10/27/55	Motor Sent ashore, Armature and fields cleaned, commutator turned and undercut Armature and Impeller balanced, new bearings installed, returned and reinstalled.					
7-7-56	<i>Turned down armature - commutator turned and undercut, armature and impeller balanced, new bearings installed, returned and reinstalled.</i>					
9-4-56	<i>serviced</i>					
1965	Reactivation. See Spec. MSTSP 66-16					
2-66	CHECKED BRUSHES					
4-66	" " - OILED					
8-66	" " "					
10-66	" " "					

DATE

FEB

MAY

AUG

NOV

FEB

MAY

AUG

NOV

FEB

MAY

AUG

NOV

FEB

MAY

AUG

NOV

FEB

MEG OHMS

20% IN ACCORDANCE WITH
BOSCH'S MANUAL QUALITY
4030
25
20
15
10
5
0

OHMS

PLOT ONLY INSULATION
RESISTANCE VALUES WHICH
HAVE BEEN CORRECTED TO

★ MEG OHM

500,000
450,000
400,000
350,000
300,000
250,000
200,000
150,000
100,000
50,000
0

INDEX

UNIT

CARD NO