

# MacCLUNEY

(St. Pierre)

*Rig-latch*

## HOOCS



A  
**Sure-Release  
Hook  
for Lifeboats  
and Rafts**

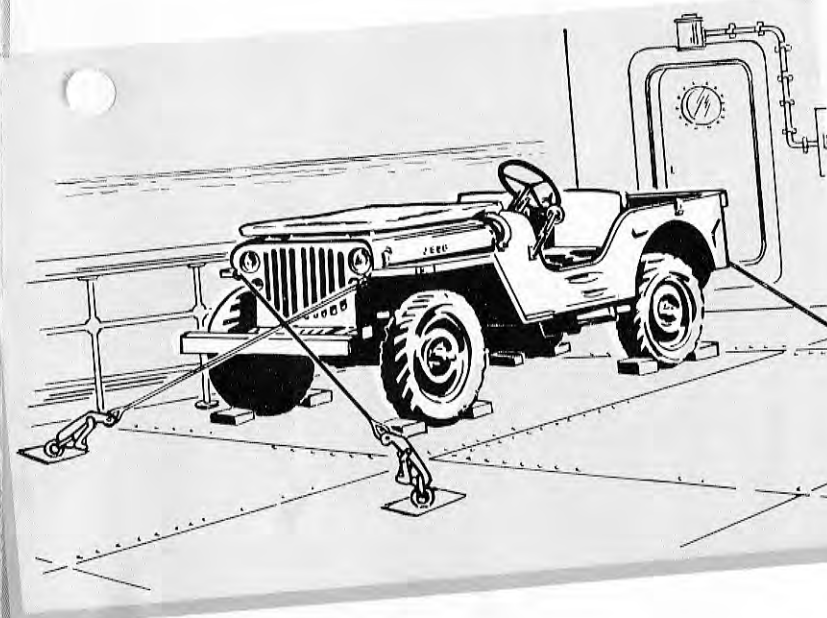




## IT NEVER FAILS TO OPEN

- Under Extreme Tension
- Under Water
- Regardless of the Angle or List of the Ship

The MacCLUNEY-St. Pierre Rig-Latch Hook was designed to save lives. It will provide foolproof, safe operation under every possible adverse condition. Experience in launching lifeboats and the testimony of survivors of sea disasters bears out the dire need of just such hooks as the MacCLUNEY-St. Pierre. Its non-failing operation has been proven in every possible way — it will open under severe tension, it will open regardless of the angle or list of the ship, it will open under water, it will open without the aid of a tool and it can be safely opened by hand.



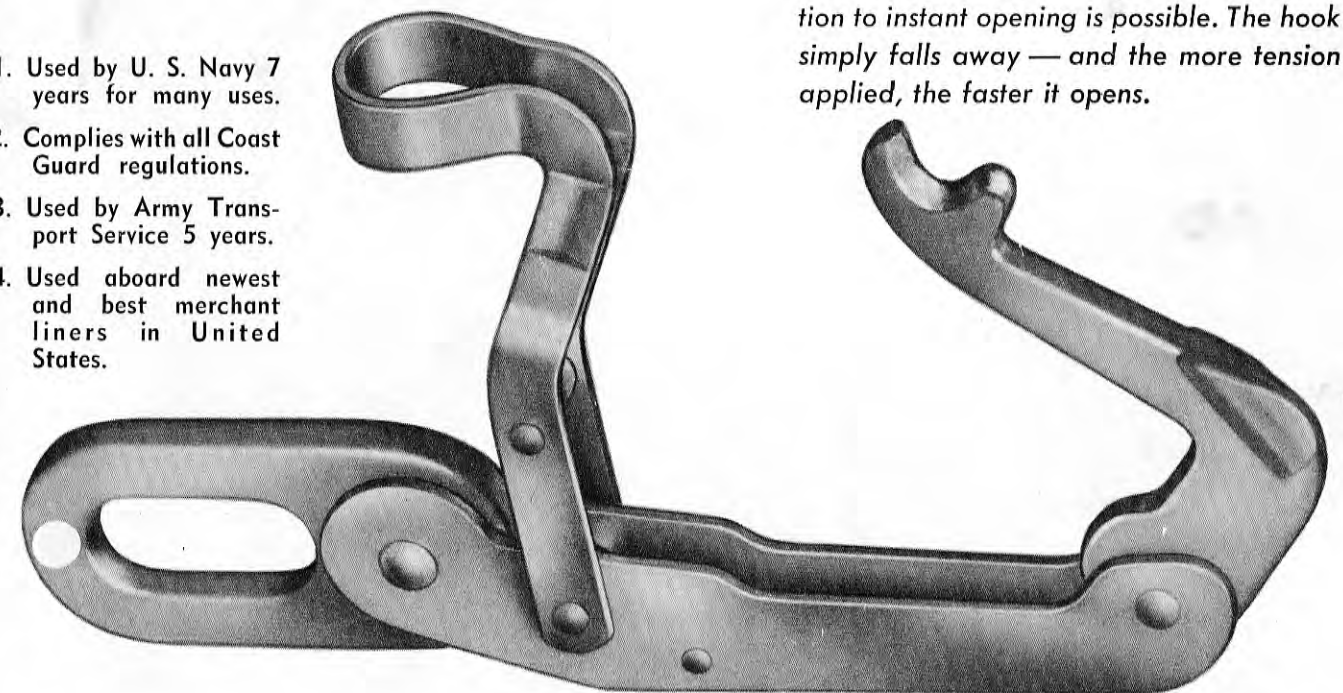
## New Features offered only in the **MACCLUNEY** (*St. Pierre*) **HOOKS**

- It is impossible to jam it.
- Operates under extreme tension.
- Operates under water.
- Operates without the aid of tool.
- Operates quickly.
- Safe to operate by hand.
- Stronger than the best steel cable of the size for which it is specified.
- High safety factors are possible with a minimum of weight.
- Constructed to meet all government requirements.

### POSITIVE OPENING IS ASSURED

Once the release lever is pulled no obstruction to instant opening is possible. The hook simply falls away — and the more tension applied, the faster it opens.

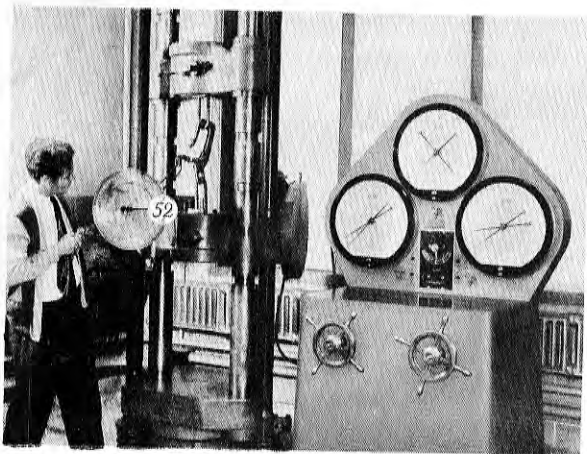
1. Used by U. S. Navy 7 years for many uses.
2. Complies with all Coast Guard regulations.
3. Used by Army Transport Service 5 years.
4. Used aboard newest and best merchant liners in United States.



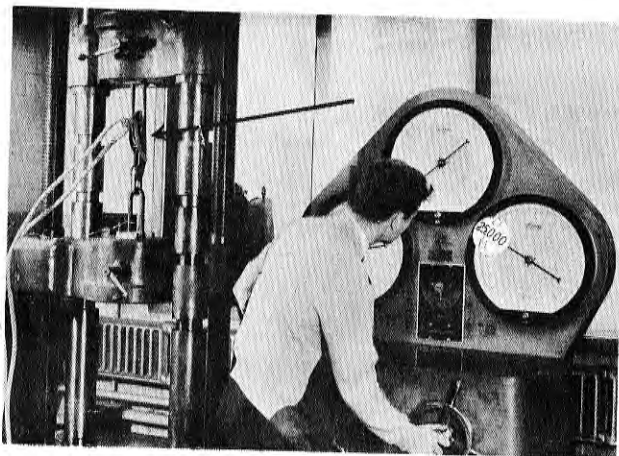


## Tested for Load on Link and Required Pull to Release

In first of two tests at Materials Testing Laboratory of Worcester Polytechnic Institute, Worcester, Mass., a pull of 52 pounds released MacCLUNEY-St. Pierre Rig-Latch under a load of 10,000 pounds on the link.



In second test for strength, only MacCLUNEY-St. Pierre Rig-Latch showed no failure with load on link of 25,000 pounds.



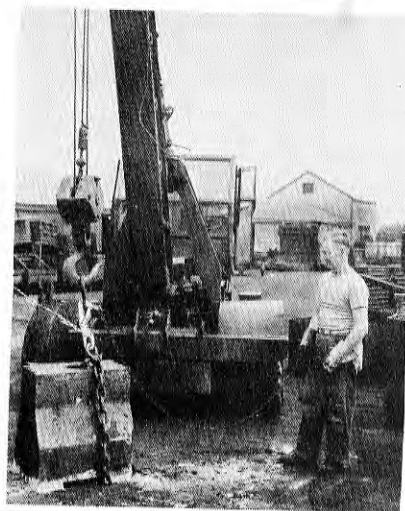
**It is IMPOSSIBLE To Bind Any Of Its Moving Parts - No Matter How Great The Applied Tension.**

The tension line illustrates the value of keeping the eye over the load. The main pin at the top represents the eye and the sling link at the bottom represents the load. The line of tension passes through the frame and over a substantial part of the lower pin distributing the load through all the parts.

The MacCLUNEY-St. Pierre Rig-Latch operates simply, either by hand or attached line. A slight pull will swing releasing lever "A" outward freeing hook "B" that releases the gripe under any load.

The MacCLUNEY-St. Pierre Rig-Latch Hook is constructed of high grade heat-treated steel, plated to protect against corrosion and rust. It is manufactured in the following sizes:

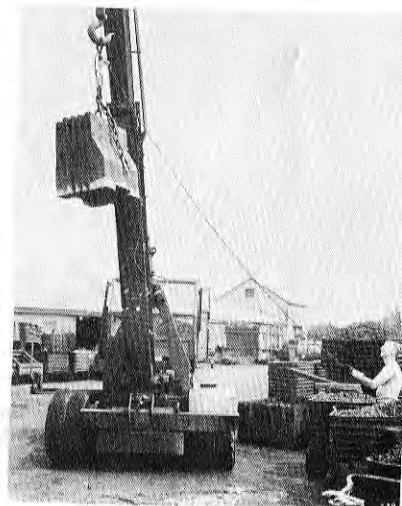
Part No.	Size	Size of Cable
28423	3/8"	3/8"
28366	5/8"	5/8"
28418	3/4"	3/4"
28440	1"	1"



**For releasing heavy loads**  
Loads weighing from 5000 to 10,000 pounds and held by a MacCluney-St. Pierre Rig-Latch, are quickly released with a 52 pound pull.

**For releasing loads from a distance and relieving cable wear**

Man hours are saved by using a MacCluney-St. Pierre Rig-Latch when a load must be released at a height or in a remote position away from the crane.



**A PRODUCT OF** *St. Pierre* **CHAIN CORPORATION**  
WORCESTER, MASS.

U. S. Patent Numbers: 2,519,914,  
2,419,650, 2,422,916, 2,407,758