

# WARRANTY

The name RADIANT is your warranty that this Projection Screen has been thoroughly checked and tested for efficient operation and projection quality.

So carefully has the manufacture of the Screen been supervised, that RADIANT positively warrants this product to be free from defects in materials or workmanship.

Under this warranty, the manufacturer's obligation shall be to repair or replace, within 1 year of date of purchase, any part or parts of screen that in our judgment show evidence of such a defect.

This warranty shall not apply to any RADIANT Projection Screen which has been tampered with, altered in any way or otherwise subjected to accident, misuse or abuse. Damage (including concealed damage) occurring in transit should be reported immediately to the carrier and a claim for damages filed.

*here's  
how  
to operate  
your  
new*

**RADIANT MANUFACTURING CORP.**  
8220 AUSTIN AVENUE • MORTON GROVE, ILLINOIS



## RADIANT

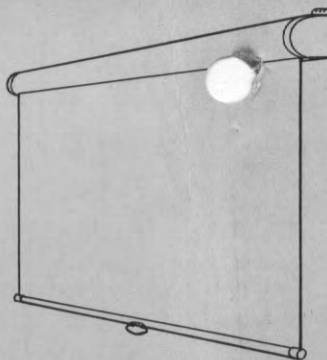
PROJECTION SCREEN

900-207

PRINTED  
IN  
U.S.A.

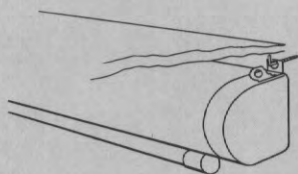


## hanging the "ECED"

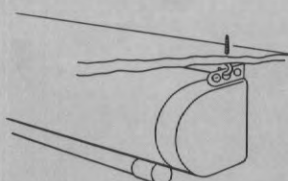


*congratulations!*

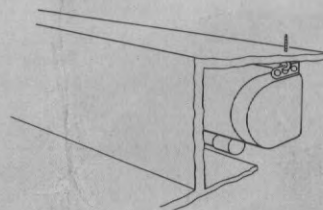
You now own the world's finest screen. Radiant screens are constructed of carefully selected materials and are design engineered to provide many years of trouble-free service.



**1. Wall Mounting:** (Fig. A.) Measure the distance between the mounting bracket centers. Mark the measured dimension on the wall at the required height. Make sure that the mounting holes are at an equal height for level mounting of the screen case.



**2. Ceiling Mounting:** (Fig. B.) Measure the distance between the mounting bracket centers. Mark the measured dimension on the ceiling. Make sure that the mounting hooks are set out far enough to allow the extended screen to clear any obstructions on the wall.



**3. Recessed Mounting:** (Fig. C.) For in-the-ceiling installation, the screen case can be mounted above the ceiling level using the same mounting procedure as for ceiling mounting. After the screen has been mounted, cover the opening in the ceiling leaving sufficient clearance for retraction of the screen slat bar without interference.

## how to care for your screen

Your Radiant Screen is a precision engineered unit, which is guaranteed to be in perfect operating condition when it is delivered to you. To keep your Radiant Screen in perfect operation, follow these simple steps:

When rolling up screen, always release **slowly** to prevent damaging the fine screen fabric.

When not in use, keep screen rolled up into protective housing.

Always brush screen after using, particularly if used outdoors. Use a soft brush to remove all traces of dust, dirt, or other foreign matter.

## Your Radiant Guarantee

*Radiant Manufacturing Corporation guarantees the material and workmanship in this product against any defects which may appear within a reasonable time after proper installation and use, according to the enclosed instructions.*

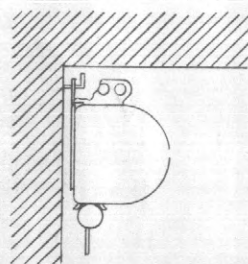
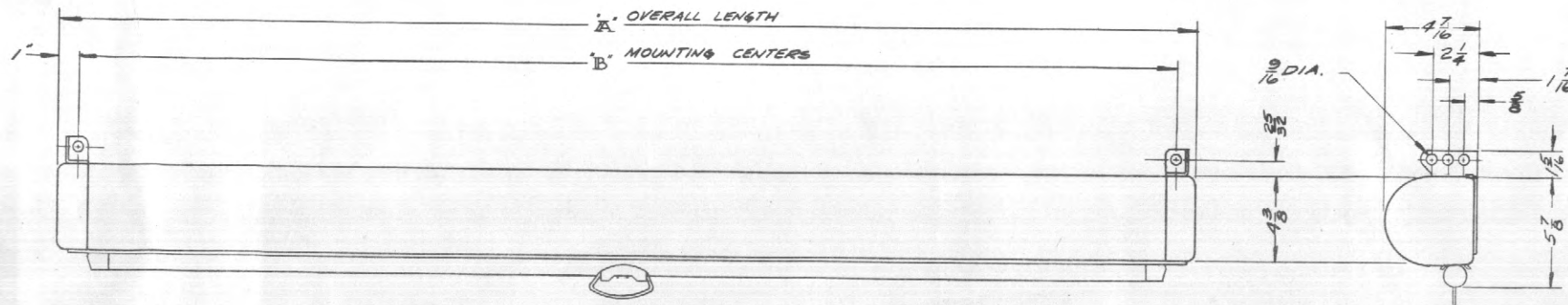
*Your dealer will assist you with any difficulty you may encounter.*

*Your screen has been made with great care and attention. Handle it as a prized possession.*

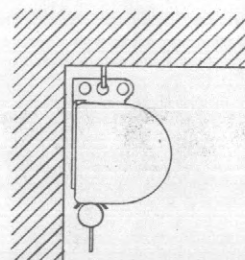
**RADIANT manufacturing corp.**

8220 NORTH AUSTIN AVENUE • MORTON GROVE, ILLINOIS 60053

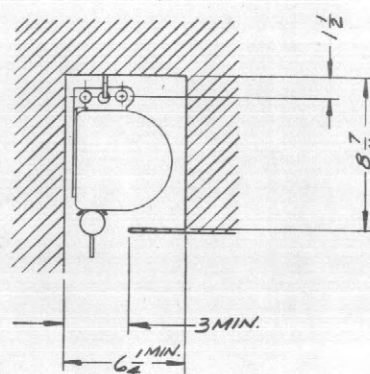
DRWG. NO.  
900-261



WALL  
MOUNTED



CEILING  
MOUNTED



RECESSED MOUNTING

3412-12	148 5/8	146 5/8
8410-10	124 5/8	125 5/8
749-9	112 5/8	110 5/8
648-8	100 5/8	98 5/8
SCREEN SIZE	A DIM.	B DIM.

REVISIONS:

ISSUE: 1

TOLERANCES  
UNLESS OTHERWISE SPECIFIED  
FRACTIONAL ±  
DECIMAL ±  
ANGULAR ±  
HOLES ±

SCALE: ~

DRAWN BY RK

CHECKED F.J.S.

MODEL EC

NO. REQ'D. ~

FINISH:

~

DO NOT SCALE PRINT

APPROVED BT

DATE 5-31-60

EC-ED

~

~

RADIANT MFG. CORP.  
MORTON GROVE ILL.

NEXT  
ASSEMBLY

NAME  
INSTALLATION DIAGRAM  
MODEL-EC & ECB.

DRAWING  
NO. 900-261

ISSUE 1