

Bosin

USNS GENERAL EDWIN D. PATRICK (T-AP 124)  
c/o Fleet Post Office  
San Francisco, California

T-AP 124/AJO'H:Gy  
4700  
23 December 1966

A-D-D-E-N-D-U-M

ANNUAL OVERHAUL REPAIR LIST

1966

VOYAGE No. 156

SUBMITTED BY: J. A. O'Halloran

J. A. O'HALLORAN  
CHIEF ENGINEER

APPROVED BY: C. W. Hutcheson

C. W. HUTCHESON  
MASTER

ITEM No.	PRIORITY	SUBJECT & DESCRIPTION
100	3	SUBJECT: <u>TORQUE SPRING - WATERTIGHT DOORS</u>
		DATA: MFG: Philadelphia Gear Works D-72014; Style: BD; Type: SC-1
		LOCATION: None on board - To be stowed in Spare Parts boxes - for future emergency repairs
		CONDITION: None on board
		SIZE: As per SAMPLE (Three (3) Springs)
		RECOMD: Due to construction date of present watertight doors - Spare parts are no longer available. Fabricate three (3) Springs as per sample; if they are not available in open stock. Furnish vessel with three (3) springs to be used for spare parts.
101	3	SUBJECT: <u>HINGE PADS - No. 5 HATCHCOVER - REPLACEMENT</u>
		DATA: N/A
		LOCATION: Forward coaming No. 5 Hatch - 01 Level
		CONDITION: Hinge pads were originally made to fit a one inch (1") diameter pin. Eyes are elongated to approx. one & one half (1½") inches.

COMP.  
MTR

101 (Contd from Page No.43)

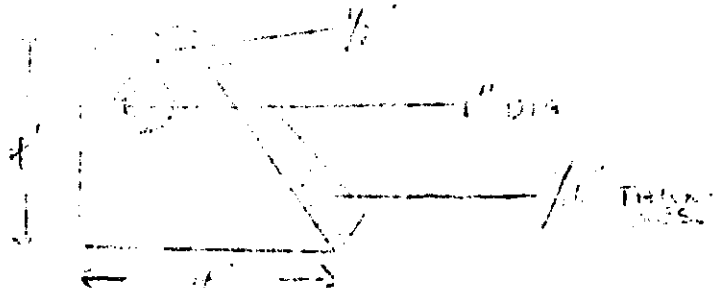
HINGE PADS - No.5 HATCH -REPAACEMENT

QUAN/SIZE:

Eight (8) pads as per accompanying sketch.

RECOND:

Burn off existing pads and replace with new.



102

3

SUBJECT:

RETAINER CHANNELS FOR DOGS ON HATCH  
No.5 COAMING

DATA:

N/A

LOCATION:

No.5 Hatch - 01 Level

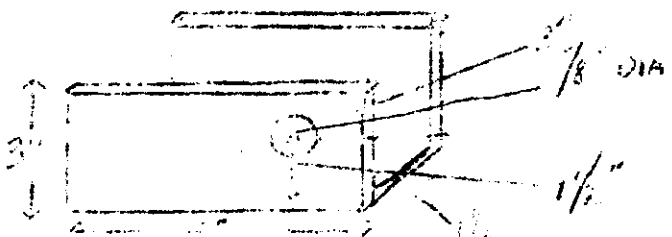
CONDITION:

Broken and bent by stovedores continually securing cargo hook under coaming.

QUAN/SIZE:

Two (2) - Size as per accompanying sketch.

COMP.  
M+R



RECOND:

Crop out remainder of channels, repair and fair up bent sections of coaming on each side of hatch and weld new channels into place so that dogs will line up with lips on hatch cover. Crop out wasted section of stiffeners and build up with new material extending up to coaming.

103

3

SUBJECT:

DOG EARS - INSTALLATION OF

DATA:

None

LOCATION:

Coaming No.5 Hatch - 01 Level

CONDITION:

On forward and after side of Hatch No.5 the coaming is part of the ladderwells leading down into the trunk of the hatch. At present there exist five (5) inch channels in these coamings for the dogs. Due to debris collecting in these channels dogs are inoperative & also the channels form a constant leaking source into the ladderwells.

COMP.  
M+R

(CONTD)

ADDENDUM

ANNUAL OVERHAUL REPAIR LIST - (Continued from Page No.44) VOYAGE No.156

ITEM No.      PRIORITY      SUBJECT & DESCRIPTION

103 (Contd from Page No.44)

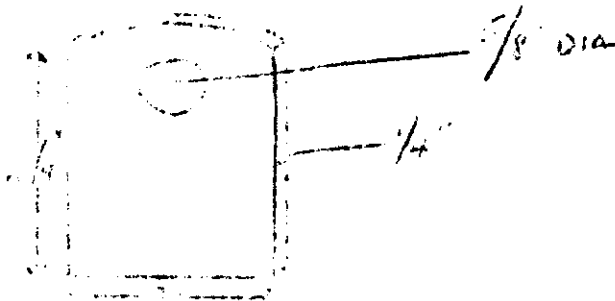
DOG EARS - INSTALLATION OF

QUAN/SIZE:

Eight (8) ears for four (4) dogs

RECOMD:

Burn off the existing channels under the coaming. Close the resulting holes & substitute dogs ears on top of coaming. New dogs will have to be five & one-half inches in length (5½").



104

3

SUBJECT:

HOLED BULKHEAD -CHIEF RADIO OFFICER'S RM.

DATA:

N/A

LOCATION:

02-110-1

CONDITION:

Bulkhead is holed & wasted away behind base tile behind commode. Although it is within the capacity of ship's force to repair this bulkhead, the Radio Officer would be deprived of his room for some time.

QUAN/SIZE:

As required to correct

RECOMD:

Remove base tile, crop out wasted section of bulkhead, and replace with new. Renew base tile.

COMP.  
M+R

105

3

SUBJECT:

LIFEBOAT EMBARKATION DOORS- REPAIR OF

DATA:

N/A

LOCATION:

1-165 to 167- 1&2

CONDITION:

Webbing on bottom of doors is wasted away. M&R has recently installed new sheathing panels on the inside of these doors, however nothing was done about the wasted webbing.

QUAN/SIZE:

Four (4)

RECOMD:

Remove all four doors from ship to shop. Remove panel and sliding window. Subject door to commercial sandblast & replace all wasted sections. Preserve according to MSTs specifications & re-assemble. Re-install doors on vessel.

COMP  
M+R

### ADDENDUM

ANNUAL OVERHAUL REPAIR LIST - (Continued from Page No.45) VOYAGE No.156

ITEM No.	PRIORITY
----------	----------

SUBJECT & DESCRIPTION	DATE	TIME	LOCATION	STATUS	REMARKS
1. [illegible]	[illegible]	[illegible]	[illegible]	[illegible]	[illegible]
2. [illegible]	[illegible]	[illegible]	[illegible]	[illegible]	[illegible]
3. [illegible]	[illegible]	[illegible]	[illegible]	[illegible]	[illegible]
4. [illegible]	[illegible]	[illegible]	[illegible]	[illegible]	[illegible]
5. [illegible]	[illegible]	[illegible]	[illegible]	[illegible]	[illegible]
6. [illegible]	[illegible]	[illegible]	[illegible]	[illegible]	[illegible]
7. [illegible]	[illegible]	[illegible]	[illegible]	[illegible]	[illegible]
8. [illegible]	[illegible]	[illegible]	[illegible]	[illegible]	[illegible]
9. [illegible]	[illegible]	[illegible]	[illegible]	[illegible]	[illegible]
10. [illegible]	[illegible]	[illegible]	[illegible]	[illegible]	[illegible]
11. [illegible]	[illegible]	[illegible]	[illegible]	[illegible]	[illegible]
12. [illegible]	[illegible]	[illegible]	[illegible]	[illegible]	[illegible]
13. [illegible]	[illegible]	[illegible]	[illegible]	[illegible]	[illegible]
14. [illegible]	[illegible]	[illegible]	[illegible]	[illegible]	[illegible]
15. [illegible]	[illegible]	[illegible]	[illegible]	[illegible]	[illegible]
16. [illegible]	[illegible]	[illegible]	[illegible]	[illegible]	[illegible]
17. [illegible]	[illegible]	[illegible]	[illegible]	[illegible]	[illegible]
18. [illegible]	[illegible]	[illegible]	[illegible]	[illegible]	[illegible]
19. [illegible]	[illegible]	[illegible]	[illegible]	[illegible]	[illegible]
20. [illegible]	[illegible]	[illegible]	[illegible]	[illegible]	[illegible]
21. [illegible]	[illegible]	[illegible]	[illegible]	[illegible]	[illegible]
22. [illegible]					

106 3 SUBJECT: SCREENS & INLET CONES FOR VENT SETS

DATA: H/L

LOCATION: #2 Deck - Frame 103 & #2 Deck - Frame 133 P/S

CONDITION: Cone & screens rusted away and holed.

QUAN/SIZE: Three (3) each - SAMPLE IN No.1 PAINT ROOM

RECORD: Fabricate & install, three (3) each, cones and screens on above vent sets - 62" dia. screen by 31" deep cone. The fan housing interior is to be chipped & scolded to bare metal & painted with rust resisting paint before installation.

106 A            3      SUBJECT:                 FORECAST - BLINKER LIGHT

DATE:                  N/A

LOCATION:                FORECAST

CONDITION:             Lighting fixture, fixture support, cable  
and standoffs are rusted away.

QTY/SIZE:               One (1)

RECORD:                Renew one ship's furnished lighting  
fixture, fixture support, cable stand-  
offs and approx. 20 feet of cable to  
junction box below fixture.  
NOTE: Lighting Fixture PSN 6220-152-2877  
Ship's Reqn. No. 8224-7003-0217.

107 3 SUBJECT: VENT SET - 01-147-1

DATA: MFG: LOUIS-ALLIS  
7.5 HP; 1755/855 RPM; 4.3/11.0  
MPS; Frame 324; Type OGEX

LOCATION: 01 Deck - Frame 147 No.9 Fan Room

CONDITION: Bad bearings and very heavy vibration.

QUAN/SIZE: One (1)

RECORD: Remove motor & impeller from ship. Clean, vacuum, dip and bake. Paint motor windings with approved varnish; build up and machine bearing shaft if needed. Install new bearing, clean impeller to bare metal, balance same & paint with rust resistant paint. Re-assemble, re-install & test for approval of Chief Engineer and MSTIS Inspector.

NOTE: Motor shaft is to be coated with leadplate or equal before installing impeller.

ADDENDUM

ANNUAL OVERHAUL REPAIR LIST - (Continued from Page No. 46) VOYAGE No. 156

ITEM No.      PRIORITY      SUBJECT & DESCRIPTION

108      3      SUBJECT:      MAIN SWITCHBOARDS - CONTROL PANELS

DATA:      None

LOCATION:      No. 1 and No. 2 Engine Rooms

CONDITION:      The Main Switchboards and control panels need painting. The paint is streaked and thin from numerous cleanings.

SIZE/QUAN:      Two (2) Switchboards 30' X 7'  
Two (2) Control Panels 8' X 7'

RECOMM:      Mask out panels and boards and spray paint using a semi-gloss Hard finish enamel paint. Boards to be cleaned & all gages, meters, & other instruments masked. Boards to be painted while the Engine rooms are secured.

109      3      SUBJECT:      No. 4 FEED PUMP RECIRC. LINE & VALVES

DATA:      N/A

LOCATION:      AFT ENGINE ROOM

CONDITION:      Hole in recirc. line between valves leaking. Valves do not hold.

QUAN/SIZE:      Two (2) 3/4" Valves -- One (1) section piping -- 14 inches (14") long -- bent.

RECOMM:      Remove existing valves and line, using old line for template. Make up new line using new ship furnished valves and reinstall. NOTE: Line to be removed when D.C. Heater is dry.

110      3      SUBJECT:      FRAMES FOR VENTILATION FILTERS

DATA:      As listed below

CONDITION:      Frames holding ventilation filters are deteriorated and badly rusted.

QUAN/SIZE:      Eighteen (18) Supply ventilation systems using metal filters:  
SIZE: 19 1/2 X 19 1/2 X 2

04-86-2	2	Sections	--	12	Screens each
03-124-0-	2	"	--	16	"
03-124-0-	2	"	--	3	"
01-146-2-	2	"	--	8	"
01-146-2-	2	"	--	3	"
01-171-0-	2	"	--	8	"
01-146-2-	1	"	--	6	"
01-196-2-	1	"	--	4	"
1-160-2-	1	"	--	12	"
1-188-0-	1	"	--	6	"
1-188-0-	2	"	--	3	"

ADDENDUM

ANNUAL OVERHAUL REPAIR LIST -- (Continued from Page No.47) VOYAGE No.156

ITEM No.      PRIORITY      SUBJECT & DESCRIPTION

110 (Contd from Page No.47)

FRAMES FOR VENTILATION FILTERS

RECOMMEND:

Fabricate new frames using galv.  
2" X 1" X 3/16" angle iron to make outside part of the frame with  
2" X 2" X 3/16" "T" galv. steel run horizontal - spaced at twenty inch (20") centers. Weld clips to hold (2") two inch by (3/16") three-sixteenth inch galv. flat bar across the front to hold the filters in place.

NOTE: Do not run any pieces in a vertical position as they are not required & only use more material & require more maintenance.

111

3

SUBJECT:

VENTILATION DUCTS - CLEANING OF

DATA:

03-96-1 PASSENGER LAUNDRY  
MAIN LAUNDRY  
BAKE SHOP

CONDITION:

Ventilation ducts have excessive lint, dirt, and dust in them.

RECOMMEND:

Open ventilation ducts as required to vacuum and sweep out ducts to remove all foreign debris. Upon completion, adjust any dampers and close up, prove air tight.

112

3

SUBJECT:

THAW ROOM DECK - MELT BOX

DATA:

N/A

LOCATION:

5-88-2

CONDITION:

Concrete deck is in poor condition - cracked and porous.

QUAN/SIZE:

One hundred square feet (100 sq ft)

RECOMMEND:

Resurface the deck to fill in cracks & give a smooth finish for easy cleaning to keep sanitary.

113

3

SUBJECT:

WORK BENCH - BUTCHER SHOP

DATA:

N/A

LOCATION:

Butcher Shop

CONDITION:

None existing

QUAN/SIZE:

One (1) only - Eight feet long, three feet wide, thirty-two inches high.  
(8' X 3' X 32")

RECOMMEND:

Install approved type Work bench. When Troops are on board the extra Work Bench surface is required.



ADDENDUMANNUAL OVERHAUL REPAIR LIST - (Continued from Page No.48) VOYAGE No.156ITEM No.      PRIORITYSUBJECT & DESCRIPTION

114	3	SUBJECT:	<u>TYPEWRITER -</u>
		DATA:	MFG: ROYAL - SER No. 16-7465558
		LOCATION:	Steward Dept custody (DECK YEOMAN'S OFFICE for PICK UP)
		CONDITION:	Broken carriage handle, dirty (Line Spacer Lever)
		QUAN/SIZE:	One (1)
		RECORD:	Provide services of a qualified typewriter service/repairman to replace broken carriage handle, thoroughly clean and overhaul machine, replacing all worn, deteriorated and/or missing parts. Clean, oil and place machine in original design operating condition. Return to vessel prior ensuing voyage.
115	3	SUBJECT:	<u>ADDING MACHINE -</u>
		DATA:	MFG: REMINGTON-RAND Ten (10) Key, Electric SER No.3N1544261E
		LOCATION:	Purser's Office (see Note below)
		CONDITION:	Inoperative - mechanism frozen. Keys inoperative when current turned on.
		QUAN/SIZE:	One (1)
		RECORD:	Provide the services of a qualified electric adding machine service/repairman to thoroughly check out machine. Place machine in original design operating condition. NOTE: Machine to be repaired <u>on board</u> or temporary loan of substitute will be required during repair due to work load volume.
116	3	SUBJECT:	<u>TYPEWRITER -</u>
		DATA:	MFG: REMINGTON - Standard SER No. M 212341
		LOCATION:	Engine Dept. Sub-Custody (DECK YEOMAN'S OFFICE for PICK UP)
		CONDITION:	Removable cylinder sticks and typing piles up as carriage moves farther to right. Right foot pad missing (front). Tabulator sluggish in operation. Creases stencils down right side. Platten or removable cylinder out of alignment.

(CONTD)

ADDENDUMANNUAL OVERHAUL REPAIR LIST - (Continued from Page No.49) VOYAGE No.156ITEM No. PRIORITYSUBJECT & DESCRIPTION

116 (Contd from Page No.49)

TYPEWRITER - Remington  
Ser No M212341

## RECORD:

Provide the services of a qualified typewriter service/repairman to thoroughly check out machine. Note deficiencies under "Condition". Remove cylinder & check alignment. Check out tabulator, Space bar, Tab Clear, Tab Set, etc. Place machine in original design operating condition. Return to vessel prior ensuing voyage.

117

3

## SUBJECT:

TYPEWRITER -

## DATA:

MFG: ROYAL - Model 440  
SER No. 16-8335959

## LOCATION:

Engine Dept. Sub-Custody (DECK YEOMAN'S  
OFFICE for PICK UP)

## CONDITION:

Remove cylinder and check bearings under paper feed rollers. Bearings missing- causing cylinder to ride high on right side; keys pile up on each other as cylinder moves to right...starting approx. from right 0 anywhere thru 80. Check alignment of removable cylinder. Check out tension on carriage.

## QUAN/SIZE:

One (1)

## RECORD:

Provide the services of a qualified typewriter service/repairman to thoroughly check out machine. Note items under "Condition" for specific repair. Check speed spacer, tabulator, tab clear, tab set, etc. Correct tension on carriage, replace bearings apparently missing, replace any and all worn, deteriorated and/or missing parts. Place machine in original design operating condition & return to vessel prior to ensuing voyage.

118

3

## SUBJECT:

INDICATORS - HORIZONTAL SLIDING WATER-  
TIGHT DOORS

## DATA:

MFG: Philadelphia Gear Works  
Gear Box Assembly  
Dwg: No.154599 - Sheet No.1

## LOCATION:

6-112-0 - 6-158-0

## QUAN/SIZE:

Two (2) each

## CONDITION:

Indicator cable broken - gears broken

## RECORD:

Replace cable and gears - repair as required to place in design operating condition.



ADDENDUM

ANNUAL OVERHAUL REPAIR LIST - (Continued from Page No. 50) VOYAGE No. 156

ITEM No.      PRIORITY      SUBJECT & DESCRIPTION

119	3	SUBJECT:	<u>REEFER BOX GASKETS</u>
		DATA:	N/A
		LOCATION:	3rd Deck & 5th Deck
		CONDITION:	Gaskets have burst & pulled away from door -- Day Box, Thaw - Milk - & Fwd Meat boxes.
		QUAN/SIZE:	Four reefer box doors (4) Total: Eight-five feet (85')
		RECOMM:	Renew gaskets on the following refrigerated box doors: Day Box; Thaw Box; Milk Box and Fwd Meat Box. Ship is unable to procure proper gasket material.
120	3	SUBJECT:	<u>PHENOLIC NAME PLATES</u>
		DATA:	N/A
		LOCATION:	Various -- see list following Recommendation.
		QUAN/SIZE:	See list following.
		CONDITION:	Non-existent or deteriorated beyond use
		RECOMM:	Request the following listed PHENOLIC NAME PLATES be made up and furnished the vessel in the sizes and quantities indicated:

ROUND PHENOLIC NAME PLATES (Valve Wheel)



<u>NOMENCLATURE</u>	<u>OUTSIDE DIAMETER</u>	<u>INSIDE HOLE DIAMETER</u>	<u>QUANTITY</u>
S.W. TO AUX. AIR CLR.	2"	5/8"	1
S.W. TO AUX. L.O. CLR.	1-3/4"	5/8"	2
FIRE & SAN. P. SUCT.	2 1/2"	3/4"	2
S.W. TO MN. GEN. AIR CLR.	2"	1/2"	2
SUB. BILGE P. SUCT.	4"	1 1/2"	1
F.O. TRANS. P. SUCT. FR. SETTLERS	2"	5/8"	1
TO SETTLERS FR. FILLING MN.	3"	3/4"	2
F.O. FILLING TO 15 STBD	3"	1/2"	1
MN. L.O. & AIR CLR. OVBD.	4"	2"	1
AUX. RECIRC.	1 1/2"	3/8"	2
AUX. M.U.F.	1 1/2"	3/8"	2
AUX. CIRC. P. SUCT.	2 1/2"	3/4"	2
LOW MN. INJ.	5"	1"	1
HIGH MN. INJ.	5"	1-1/4"	1
EMERG. BILGE SUCT.	5"	1"	1
GLD. SEAL DUMP TO COND'ER	2 1/2"	5/8"	1
GLD. SEAL DRAIN	2"	3/8"	1
1ST. STAGE SHELL DRAIN	2"	3/8"	1
600# STM. TO FEED P.	3"	1"	1
FD. P. ACTUATING	1 1/4"	5/16"	4
ACTUATING TO FD. P.	1 1/4"	5/16"	2
600# STM. TO SOOT BLOWERS	2 1/2"	1/2"	2
SUPHTR. CIRC. TO ATMOS.	2"	3/8"	4
BLR. COMP. INLET	2"	3/8"	2

(CONTD)

ADDENDUM

ANNUAL OVERHAUL REPAIR LIST - (Continued from Page No.51) VOYAGE No.156

ITEM No. PRIORITY

SUBJECT & DESCRIPTION

120 (Contd from Page No.51)

PHENOLIC NAME PLATES

<u>NOMENCLATURE</u>	<u>OUTSIDE DIAMETER</u>	<u>INSIDE HOLE DIAMETER</u>	<u>QUANTITY</u>
BLR. WTR. TEST	2"	3/8"	3
150# STM. TO 10# STA.	2 1/2"	5/8"	1
10# STM. TO AUX. EXH.	2 1/2"	5/8"	1
STM. TO 10# STA.	2 1/2"	5/8"	1
STM. FR. 10TH STAGE BLDER.	3"	3/4"	1
EVAP. CIRC. P. SUCT.	4"	3/4"	1
EVAP. CIRC. P. DISCH.	3"	1/2"	1
AUX. EXH. STM. TO EVAP.	3"	5/8"	1
SUPHTR. DRAIN	2"	3/8"	4
BOTTOM BLOW	3"	5/8"	5
F.O. SER. P. LOW SUCT.	2 1/2"	5/8"	1
D.C. HTR. DUMP	3"	3/4"	1
VENT	1 1/4"	5/16"	10
DRAIN	1 1/4"	5/16"	10
F.O. REG. BY-PASS	1 1/2"	5/16"	2
HAGEN BD. ACC. No.1 BLR.	1 1/2"	5/16"	1
HAGEN BD. ACC. No.2 NLR.	1 1/2"	5/16"	1
AUX. COND'STE. TO MN. COND'STE P.	2 1/2"	1/2"	2
DRAINS FR. 1ST ST. HTR. DR. CLR.	2"	1/2"	1
VAC. DRAG. FR. ATMOS. DR. TK.	2 1/2"	5/8"	1
COND'STE. P. VENT	1 1/4"	5/16"	2
S.W. TO L.O. CLR.	1 1/4"	3/8"	2
S.W. FR. L.O. CLR.	1 1/2"	3/8"	2
150# STM. STA. OUTLET	4"	1"	2
AIR EJECT STM. INLET	1 1/2"	3/8"	1
AIR EJECT STM. OUTLET	1 1/2"	3/8"	1
REG. BY-PASS	1 1/2"	3/8"	2
85# STA. INLET	1 1/2"	3/8"	1
85# STA. OUTLET	1 1/2"	3/8"	1
STM. TO MN. & AUX. AIR EJECT.	1 1/2"	3/8"	1
STM. TO EVAP. AIR EJECT.	1 1/2"	3/8"	1
SURFACE BLOW	3"	5/8"	1
85# X OVER	1 1/2"	1"	1
#1 AUX. GEN. THROTTLE	3"	5/8"	1
#2 AUX. GEN. THROTTLE	3"	5/8"	1
INTERMITTENT STM. STA. INLET	2 1/2"	5/8"	1
INTERMITTENT STM. STA. OUTLET	3"	5/8"	1
MN. GEN. AIR CIR. OVBD.	3"	5/8"	1
PUMP VENT	1 1/4"	5/16"	6
L.O. GRV. TK. INLET	3"	5/8"	2
L.O. GRV. TK. OUTLET	3"	5/8"	2
L.O. GRV. TK. DRAIN	1 1/2"	1/2"	2
No.1 BLR. TO MN. TURBO GEN.	4"	3/4"	1
No.2 BLR. TO MN. TURBO GEN.	4"	3/4"	1
PORT ENG. RM. BILGE SUCT.	2 1/2"	5/8"	1
STBD. ENG. RM. BILGE SUCT.	2 1/2"	5/8"	1
DISCH. TO FIRE MAIN	4"	1 1/4"	2
DISCH. TO SANITARY MAIN	4"	1 1/4"	2
AUX. COND. DISCHARGE	2"	3/8"	1
AUX. COND. SUCTION	2"	1/2"	2
AUX. COND. DISC. TO MN.	2"	3/8"	2
COOLING WATER INLET	1"	1/4"	1
COOLING WATER OUTLET	1"	1/4"	1
FIRE MN. SUCTION	3"	5/8"	1
S.W. TO COOLER	2"	3/8"	2
S.W. FR. COOLER	2"	3/8"	2
BALLAST & F.O. Fillin No.6 PORT	3"	1/2"	1

(CONTD)

# ADDENDUM

ANNUAL OVERHAUL REPAIR LIST (Continued from Page No.52) VOYAGE No.156

ITEM No. PRIORITY SUBJECT & DESCRIPTION

120 (Contd from Page No.52)

## PHENOLIC NAME PLATES

NOMENCLATURE	OUTSIDE DIAMETER	INSIDE HOLE DIAMETER	QUANTITY
BALAST & DISC. TANKS - PORT	3"	5/8"	1
INLET STM 150# RED. STA.	2"	1/2"	2
STEAM TO AIR EJECT.	1 1/2"	1/4"	3
DISCH. TUBE NEST DR.PUMP	1 1/2"	3/8"	1
DRAIN 1st. EFFECT	1 1/2"	3/8"	2
MAKE-UP FEED	1 1/2"	3/8"	1
MAIN FEED STOP	2 1/2"	5/8"	1
AUX. FEED STOP	2 1/2"	5/8"	1
BY-PASS D.C. HEATER	2"	3/8"	1
STEAM SMOOTHING	1 1/2"	3/8"	2
DISCH. TO HOSP. AIR COND.	2"	3/8"	1
SUPERHEATER DRAIN	3"	3/8"	1
STEAM 160# RED. STA.	2"	3/8"	2
MAIN STOP	4"	1"	2
10TH STAGE STEAM	3"	3/4"	1
2ND EFFECT FEED	1 1/2"	3/8"	1
AIR EJECTOR DR. TO BILGE	1 1/2"	3/8"	1
2ND EFFECT TUBE NEST VENT	1 1/2"	3/8"	1
AIR EJECTOR AIR SUCTION	2"	3/4"	2
CIRC. WATER OVERBD.	3"	1"	1
1ST EFFECT TUBE NEST VENT	1"	3/8"	1
COLD SHACK CONN.	2"	3/4"	1
BILGE EJECTOR	4"	1 1/2"	1
HIGH SUCTION	4"	1 1/2"	1
LOW SUCTION	4"	1-3/8"	1
CONT. DRAIN TO ATMOS. DR. TK.	1 1/2"	3/8"	1
COND. PUMP VENT No.3	1 1/2"	3/8"	1
COND. PUMP VENT No.4	1 1/2"	3/8"	1
S.W. AIR COOLER OUTLET	2"	3/4"	1
S.W. AIR COOLER OUTLET	1 1/2"	3/8"	2
S.W. OIL COOLER OUTLET	3"	1 1/2"	1
VENT, OIL COOLER	1 1/2"	3/8"	1
L.O. PURIFIER SUCT.	2"	3/4"	1
L.O. DISCH. No.3 PUMP	2"	3/4"	1
AIR SUCT. CROSS-OVER	2"	3/4"	1
S.W. INLET OIL COOLER	4"	3/4"	1
1ST STAGE HTR. DRAIN	2"	3/8"	1
AIR EJECTOR CIRC. LINE	1 1/2"	3/8"	1

THE FOLLOWING PHENOLIC NAME PLATES - RECTANGULAR AS BELOW:

Eight inches by two inches (8" X 2")

SAMPLE → FAN ROOM No.1  
02-105-1 2" ← SAMPLE NOT TO SCALE

8"

FAN ROOM No. 1 02-105-1	FAN ROOM No.6 01-90-2	FAN ROOM No.12 1-96-1
FAN ROOM No.2 02-129-2	FAN ROOM No.7 01-134-0	FAN ROOM No.13 1-180-2
FAN ROOM No.3 02-127-1	FAN ROOM No.8 01-148-2	FAN ROOM No.14 1-180-1
FAN ROOM No.4 02-135-0	FAN ROOM No.9 01-146-0	FAN ROOM No.15 1-206-1
FAN ROOM No.5 01-40-1	FAN ROOM No.10 01-198-0	FAN ROOM No.15 1-206-2
FAN ROOM No.6 01-90-1	FAN ROOM No.11 1-60-2	FAN ROOM No.15A 2-76-1

(CONTD)

ADDENDUM

ANNUAL OVERHAUL REPAIR LIST (Continued from Page No.53) VOYAGE No.156

ITEM No. PRIORITY SUBJECT & DESCRIPTION

120 (Contd from Page No.53)

PHENOLIC NAME PLATES

FAN ROOM No.16
2-124-1
FAN ROOM No.16
2-124-2
FAN ROOM No.17
2-145-1
FAN ROOM No.18
2-172-2
FAN ROOM No.19
2-172-1

FAN ROOM No.20
2-190-1
FAN ROOM No.20
2-190-2
FAN ROOM No.21
3-62-2
FAN ROOM No.22
4-158-1
FAN ROOM No.23
4-164-1

FAN ROOM No.24
4-182-2
FAN ROOM No.25
4-182-1
HEATER ROOM No.14

TOTAL: THIRTY-ONE PLATES  
ONE EACH

THE FOLLOWING PHENOLIC NAME PLATES - RECTANGULAR AS BEBLOW:

SAMPLE	RESISTOR ROOM No.1	SAMPLE
RESISTOR ROOM No.1	RESISTOR ROOM No.4	
RESISTOR ROOM No.2	RESISTOR ROOM No.5	
RESISTOR ROOM No.3	RESISTOR ROOM No.6	

TOTAL: SIX PLATES  
ONE EACH  
LETTERS: ONE INCH HIGH



TOTAL: FORTY-EIGHT  
TWENTY-FOUR EACH  
LETTERS: 1/2" HIGH

121

3

SUBJECT:

WINCH - ACCOMMODATION LADDER

DATA:

MFG: Ideal Winlass Co.  
MODEL: No. CR-1

LOCATION:

Port ladder - Main deck

CONDITION:

Winch will not lift the accommodation ladder

RECCMD:

Remove hoist and completely overhaul reduction gear; check motor out. Reinstall and test operate to lift the ladder up and down upon completion of repairs.

NOT  
COMP. MTR  
HAS WORKED  
OVER. BUT  
NOT SAT.