

	1961	1972
At District level		
— Percentage of women in People's Councils	20,7	40%
— Chairmen and Vice-Chairmen of Administrative Committees	9	201
— Members of Administrative Committees	308	553
At Village level		
— Percentage of women in People's Councils	16,5%	40,87%
— Chairmen and Vice Chairmen of Administrative Committees	81	3.209
— Members of Administrative Committees	3.820	10.330



Comrade Nguyen Minh Thuan, chairman of the Administrative Committee of Hoan Kiem precinct, Ha Noi, conversing with the militia-women of a factory.

WOMEN IN ECONOMIC MANAGEMENT

	1965	1972
— Managers and Assistant-managers of centrally-run factories and work-shops	58	130
— Presidents and Vice-Presidents of centrally-run companies	32	90
— Heads and Vice-heads of State Department Stores	—	1.073
— Chairmen and Vice-chairmen of cooperatives	2.642	6.943
— Leaders of work-teams	8.009	13.987



*Comrade
Le Thi Nha,
manager of
"March 8"
Textile Mill,
visiting a
weaving-
workshop.*

*Two chairmen of farming-cooperatives.
Lê Thi Nhi (left) is an engineer since 1972.*



PERCENTAGE OF WOMEN IN BR



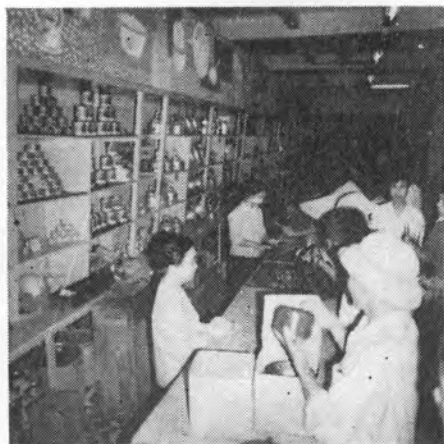
In many agricultural - cooperatives, heavy work is mechanized.



Mass-production of Diesel motors of 20 CV for agriculture.

CHES WITH MAJORITIF OF WOMEN

	1961	1972
— Cadres, workers, civil servants	20 %	42,2 %
— Agriculture :		
+ State Farms	24,7%	54 %
+ Collective sector	57 %	61 %
— Light industry	43 %	65,7 %
— Textile	—	80 %
— Clothes-making	—	83 %
— Transports and Communica- tions	13 %	31,7 %
— Building	—	34 %
— Foods and Foodstuffs	—	60 %
— Trade	24,6%	58 %
— Post-office-Telegraph-Tele- phone	10,3%	38,4 %
— Handicraft	35 %	52,4 %
— Culture	—	36,32%
— Public Health	41 %	58,2 %
— Education	12 %	52 %



A Department Store in Nam Bo street, Ha Noi.





*More and more women
take part in building-work.*



*Handicraft, a trade suitable for
women's clever hands.*



TECHNICAL, SCIENTIFIC CADRES

Women - engineers of the Microbiology group, a Socialist Unit, Ministry of Foods and Foodstuffs, at work in their laboratory.



- University - level cadres and Post-graduates
- Medium-level cadres
- Skilled workers

1965

1972

2.122

17.045

11.530

76.982

24,7%

31,44%



A woman - agronomist analysing the yield of sugar content in sugar - cane.

WOMEN IN SOCIAL AND CULTURAL BRANCHES



In a pharmaceutical factory.

An ophthalmic operation in progress

