

Coords

21-7N 106-02

Subj

XS

CAMP # B 128  
LOG # 180  
DIAAP - 1P3C

DE

\*

TY

N 35 #1

2 1474

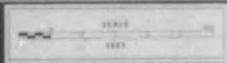
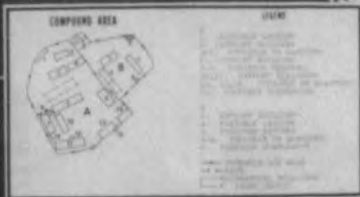
13 044



NORTH VIETNAM  
POSS SATELLITE COMPOUNDS TO  
CAMP, N-34

2 1473

#5



AREA PARTIALLY DEMANDERED APPEARS BRANDED



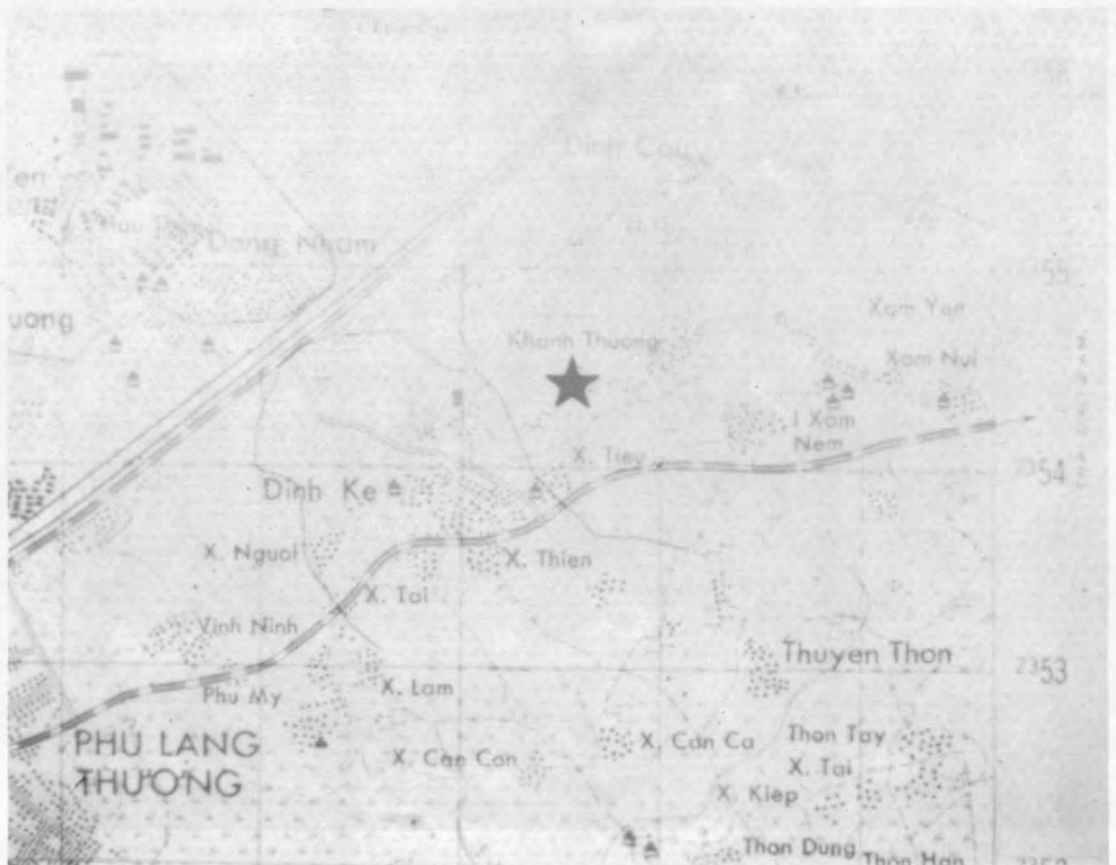
13 043

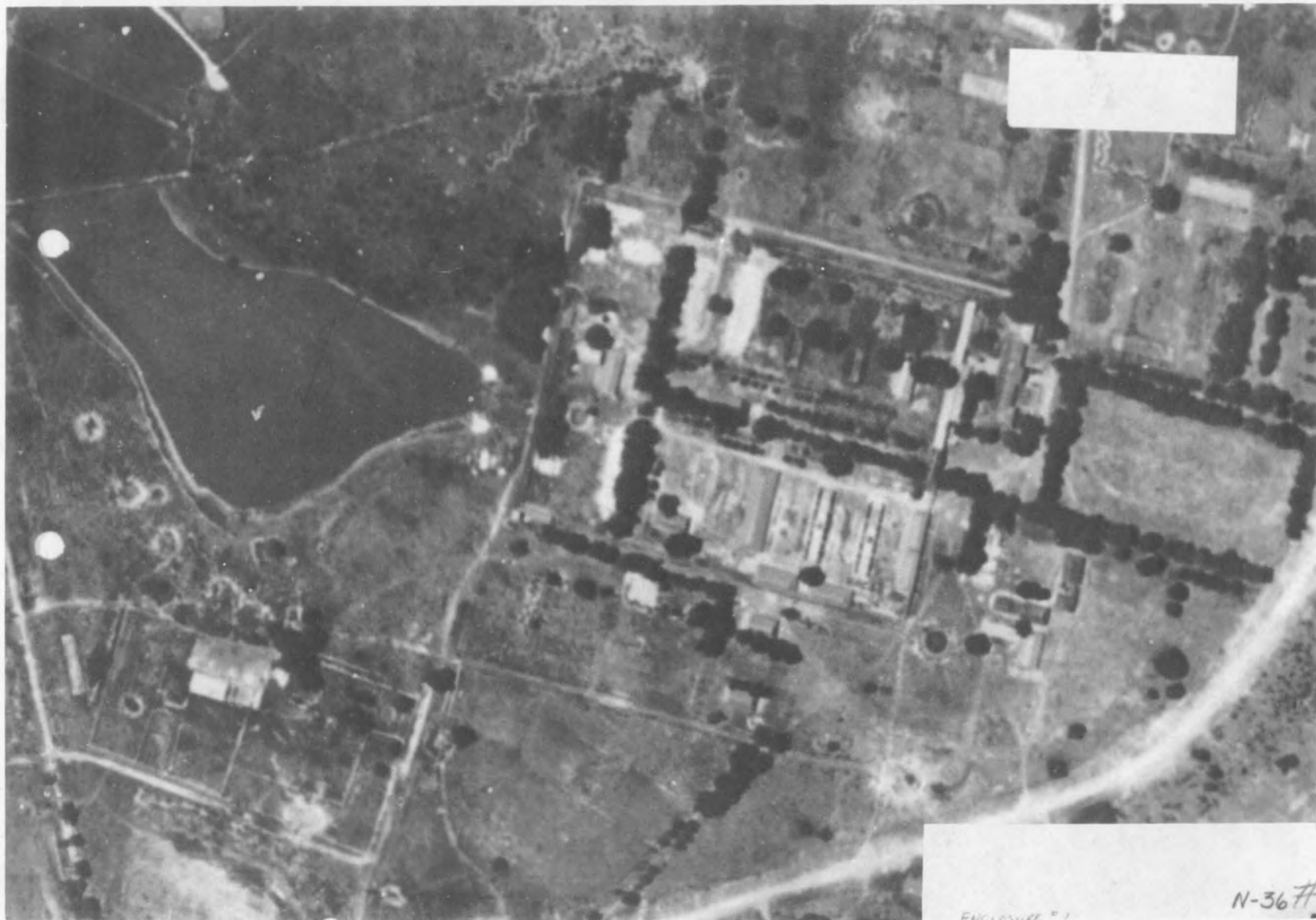


13 051

N35 #8

2 1481





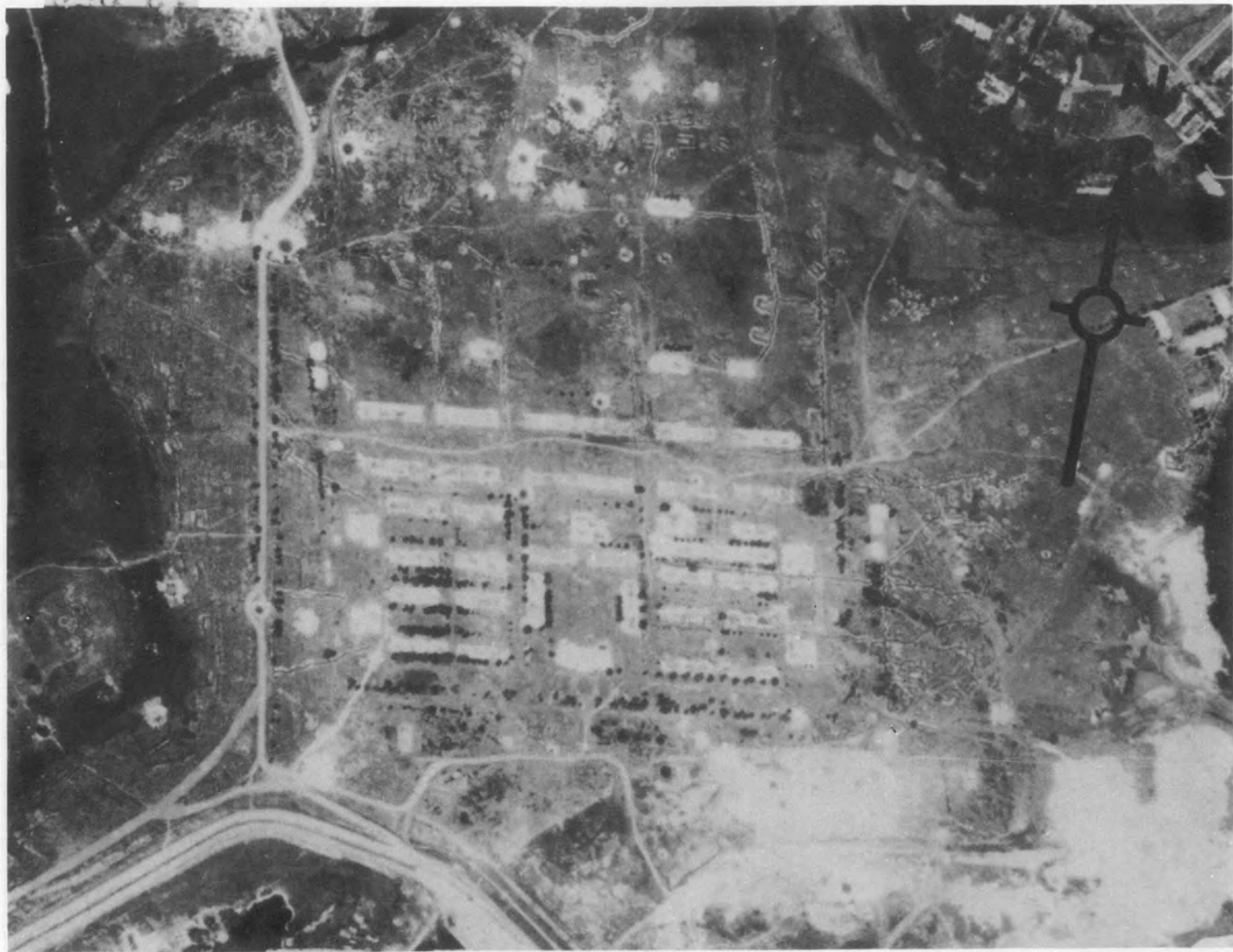
[Redacted]

ENCLOSURE # 1

N-36 #1

2 1482

13052



13 053

N36 #2

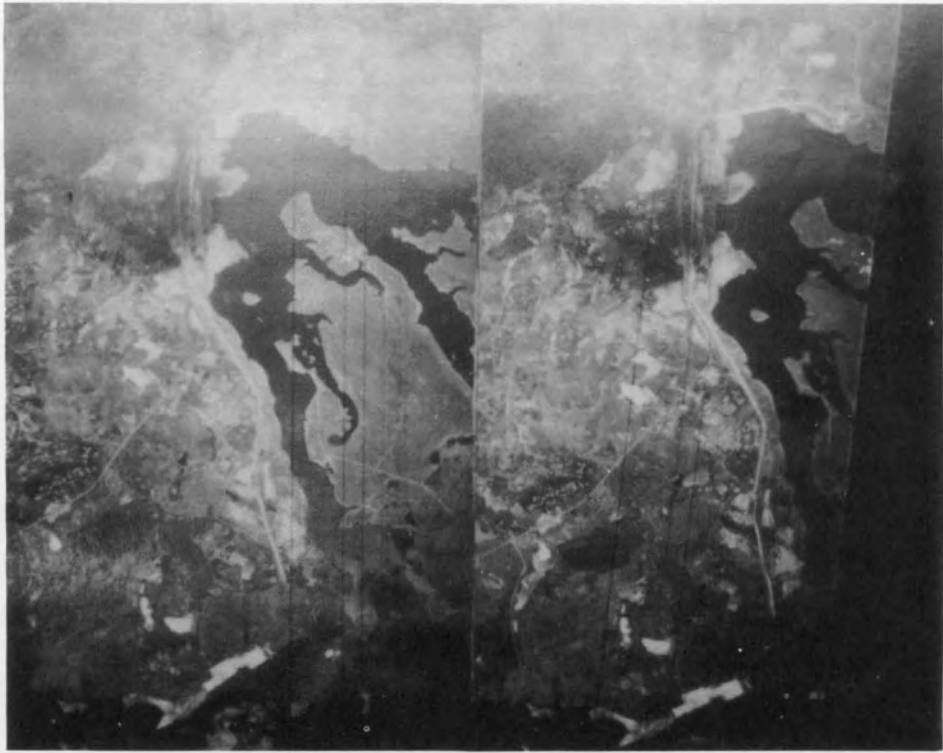
2 1483

13 054



2 1484





13056

N-36 #3

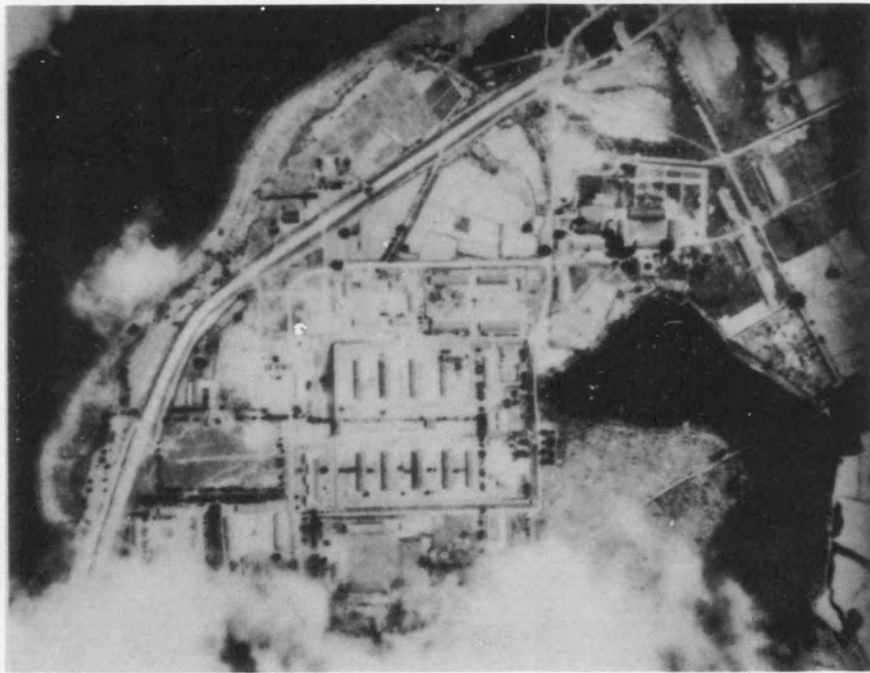
2 1486





13057

NF 48-11



N36 #6

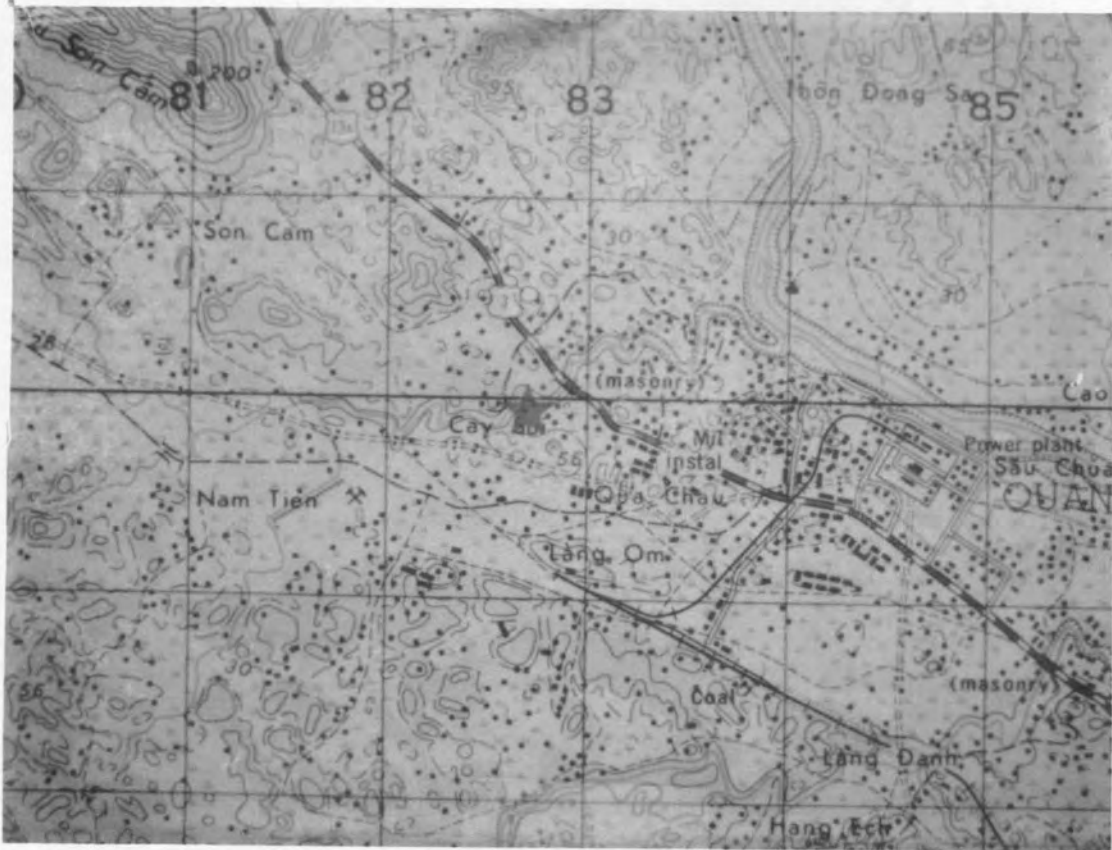
2 1487

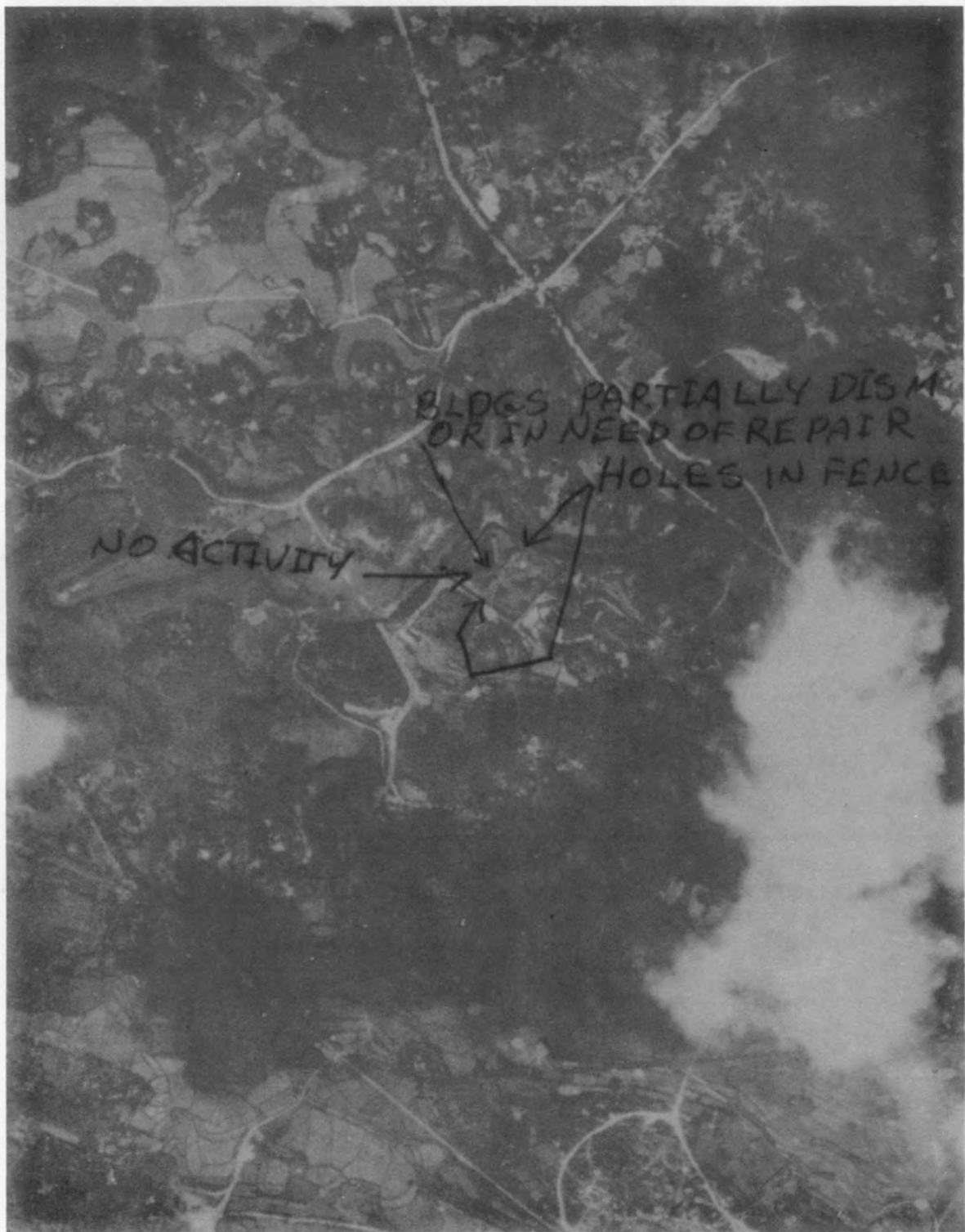


13 058

2 1488

N-37 #1



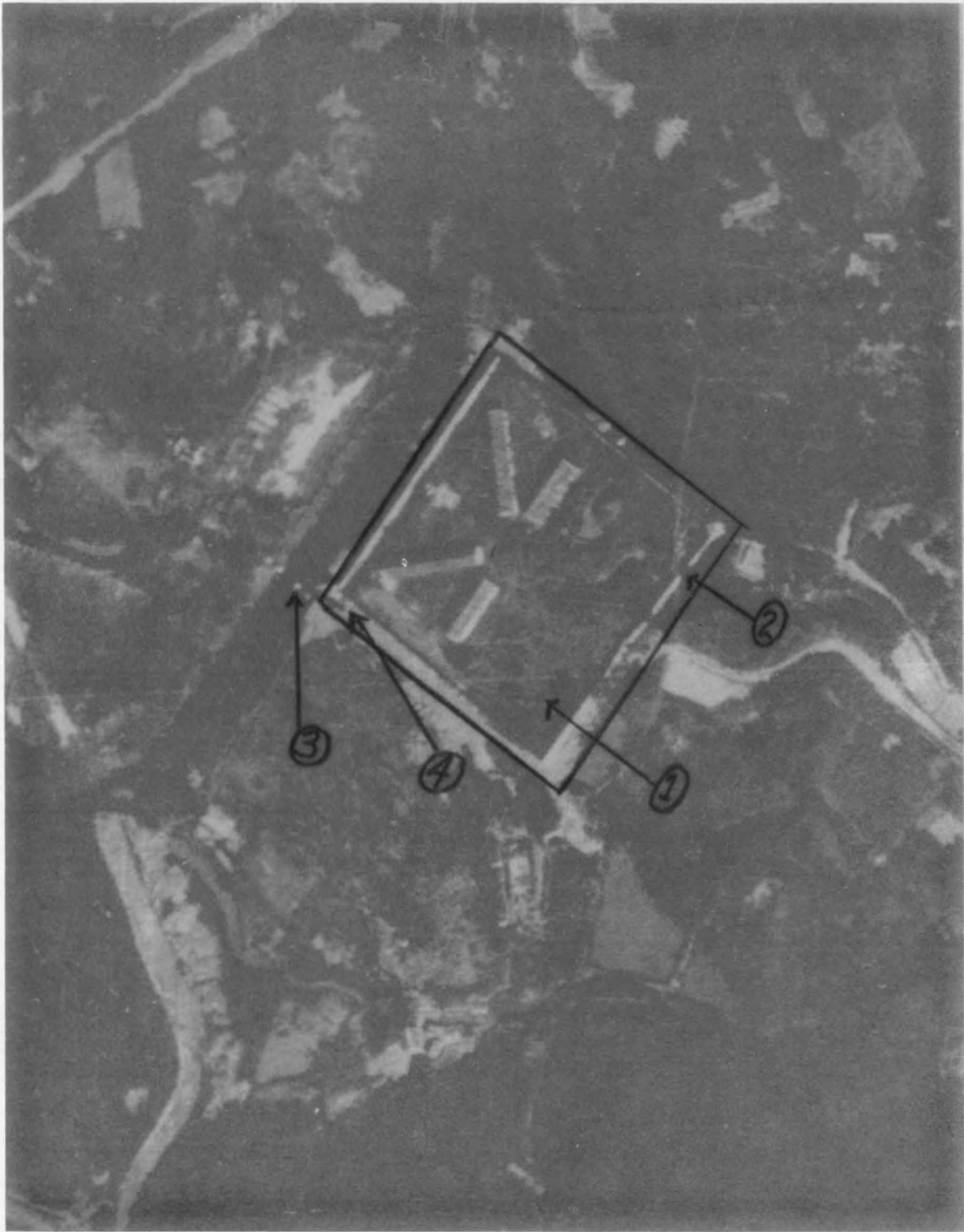


N37 #2

2 1189

13059

13 060



N37 #3

2 1490

190 81



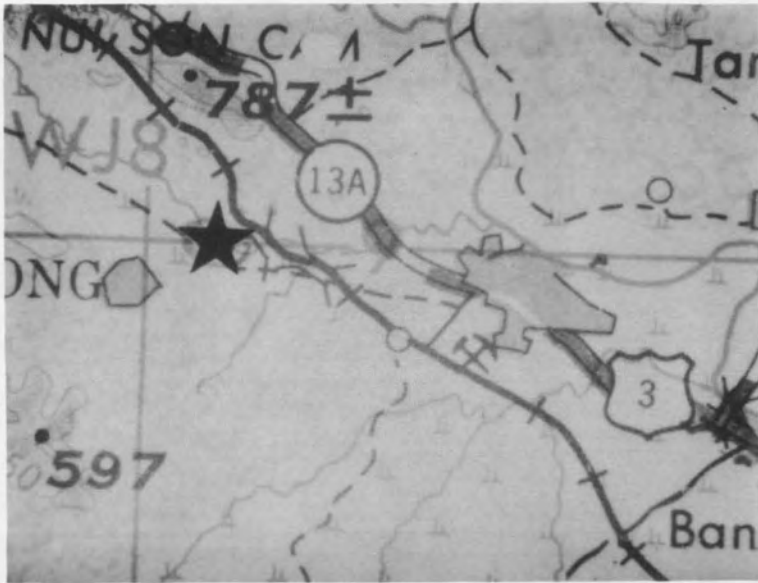
Possible PW Detention  
Installation N-77

#4

213650N/1054830E

2 1491

13 062



1:250,000 NF 48-11



UNDER CONSTRUCTION

K- 37 #5

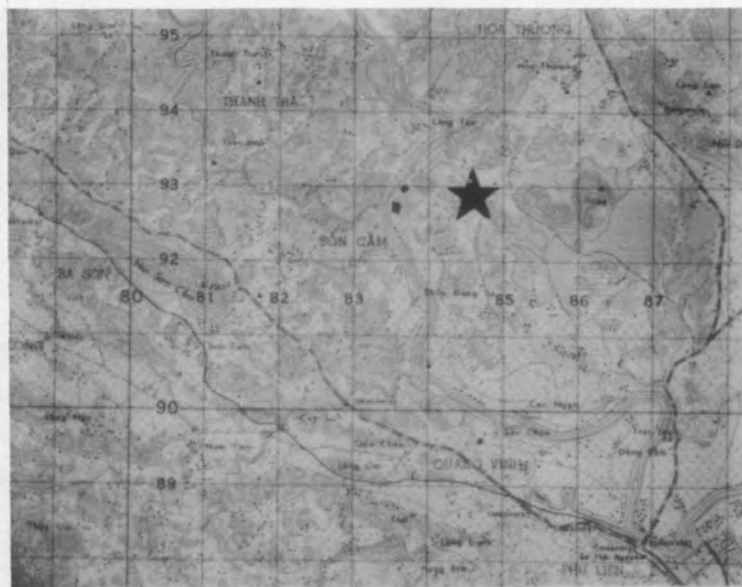
2 1492

COMPLETED

21-36-45N/105-47-50E

Enclosure 3

13-063



21493

1:250,000 NF 48-11

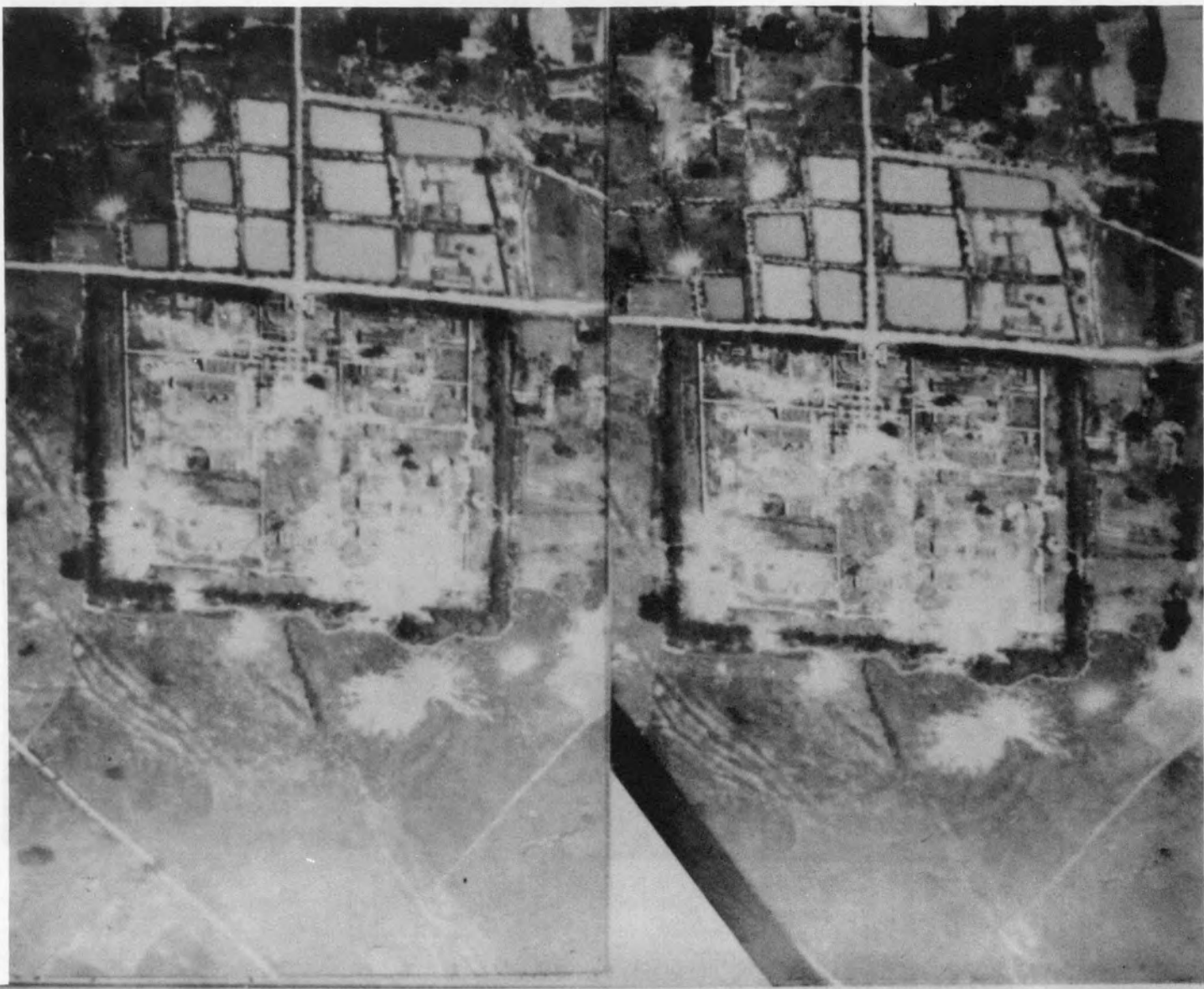
N-37 #6



21-38-20N/105-48-20E

Enclosure 4

WORKING-PAPERS

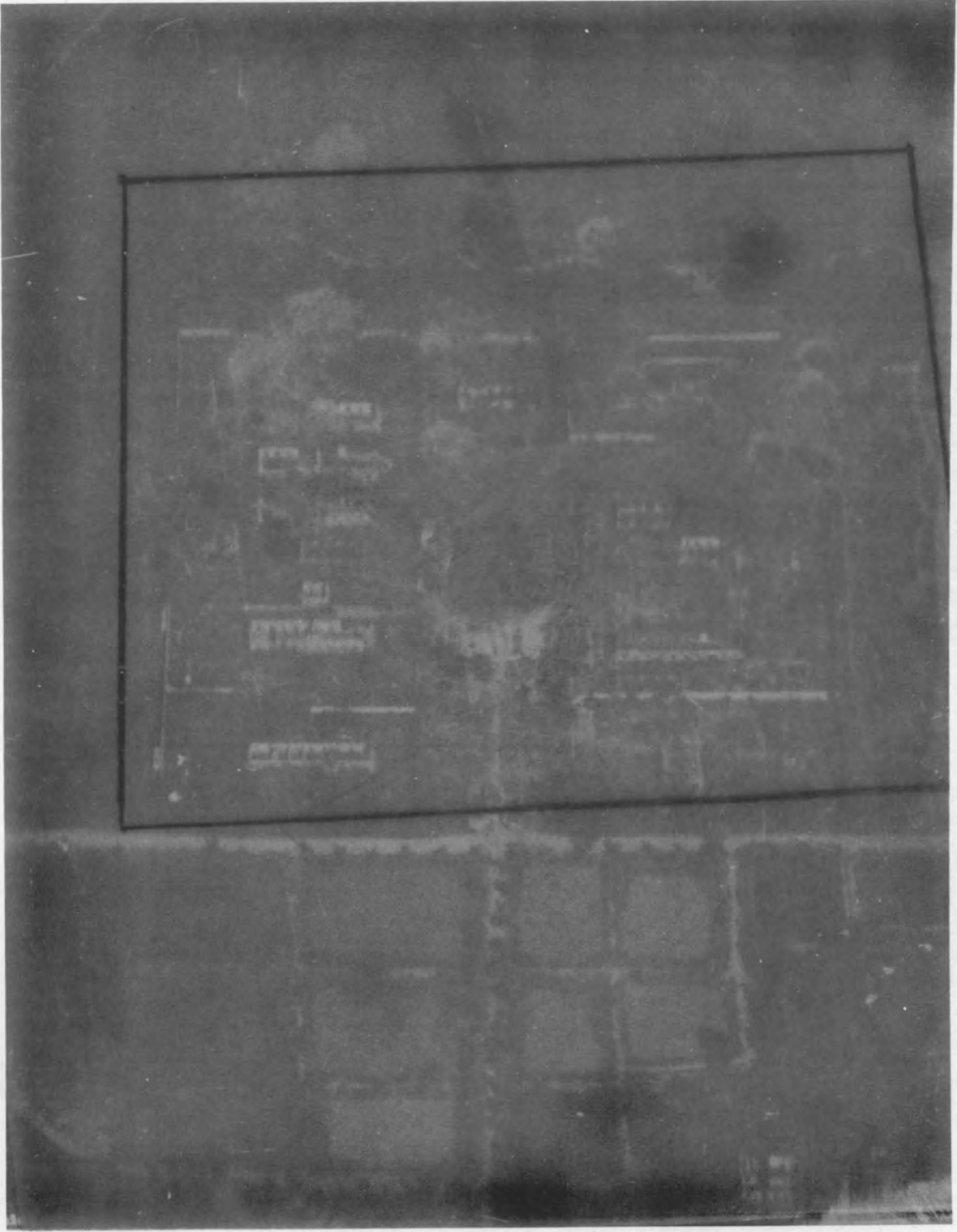


N38 #1

2 1494

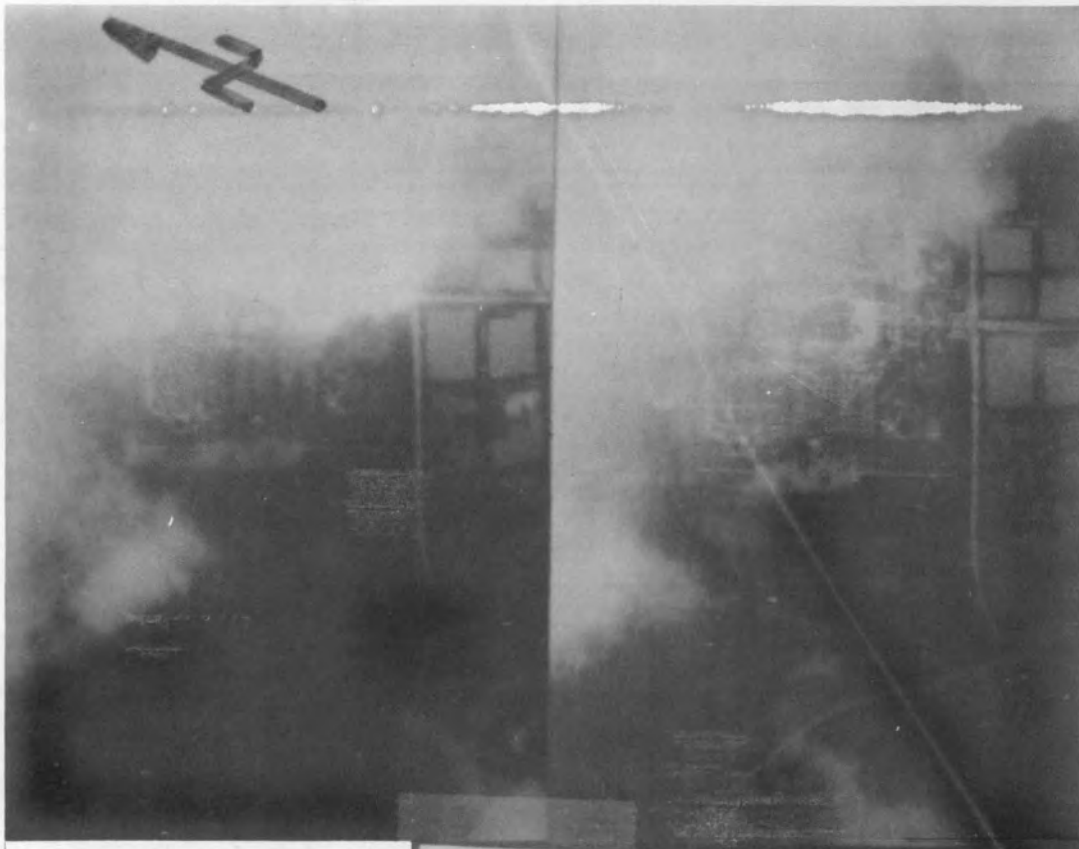
13 064

13 065



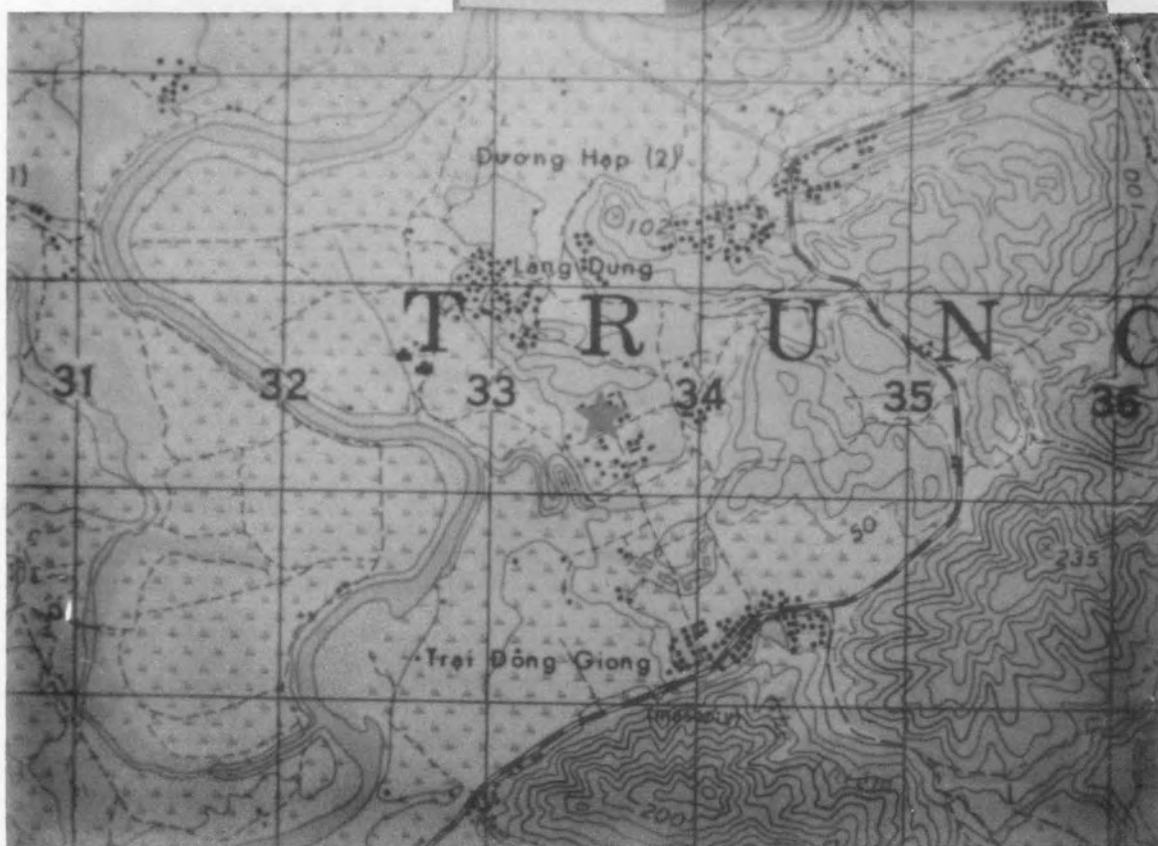
N-38 #2

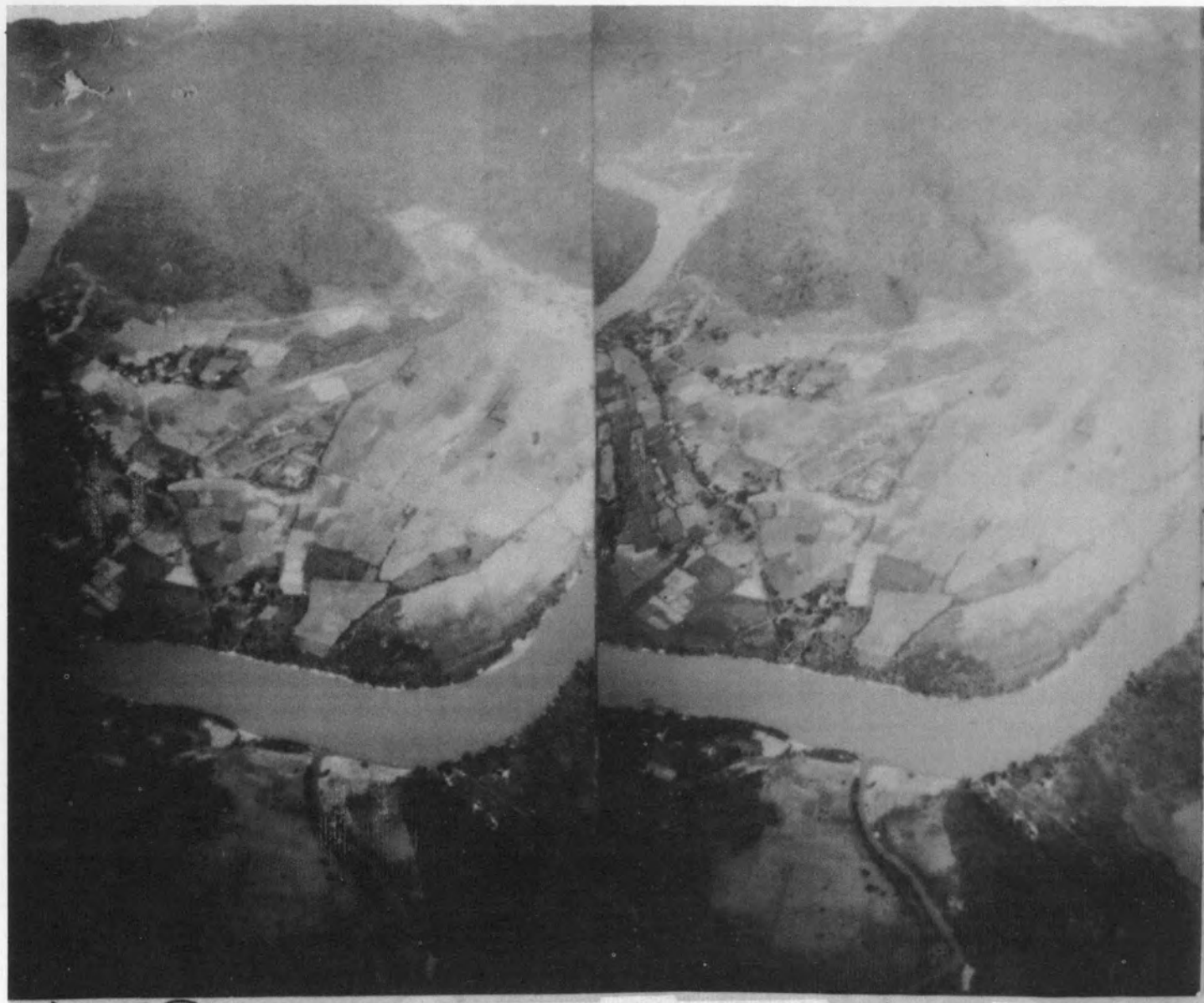
2 14 95



13 056

N-38 #3 2 1496





N 39 #1

2 1497

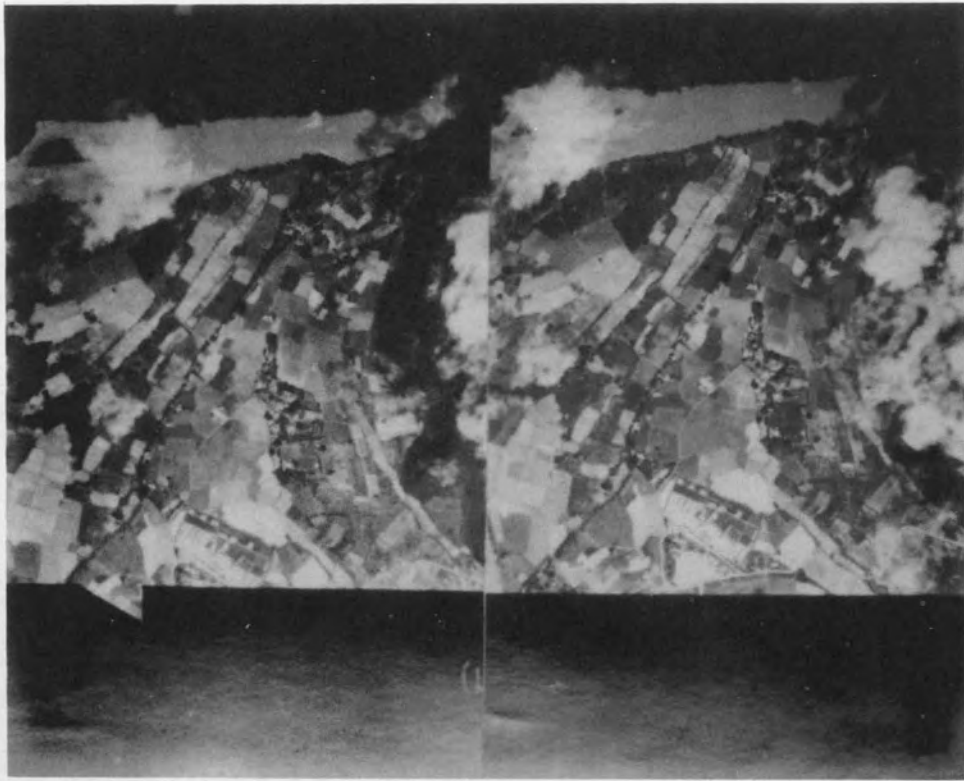
13 067



13 068

N-39 #2

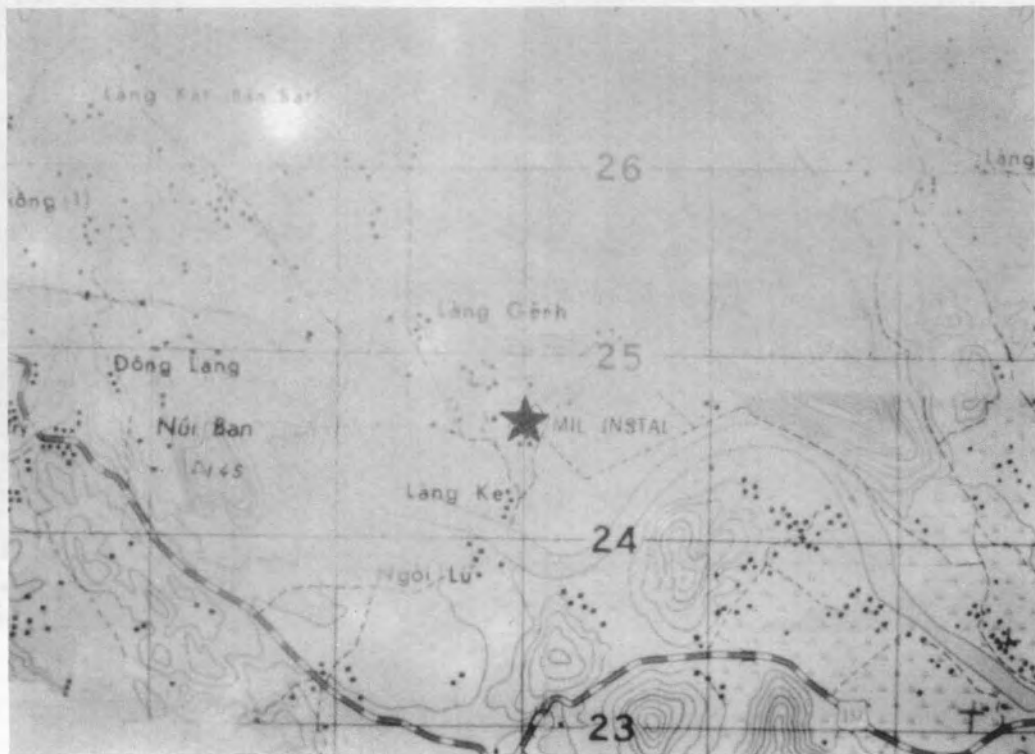
1498

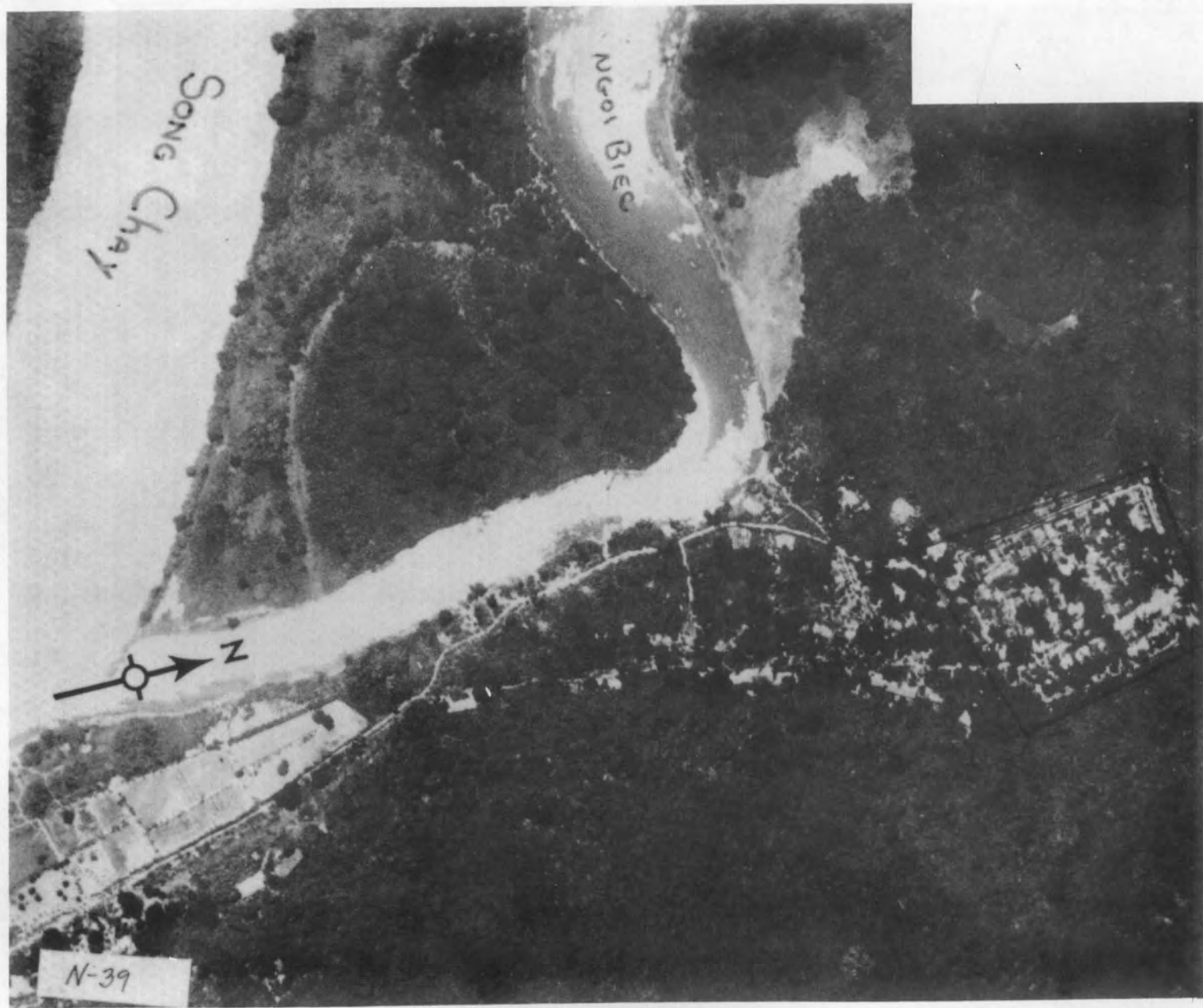


690 CT

2 149 9

N-39 #3

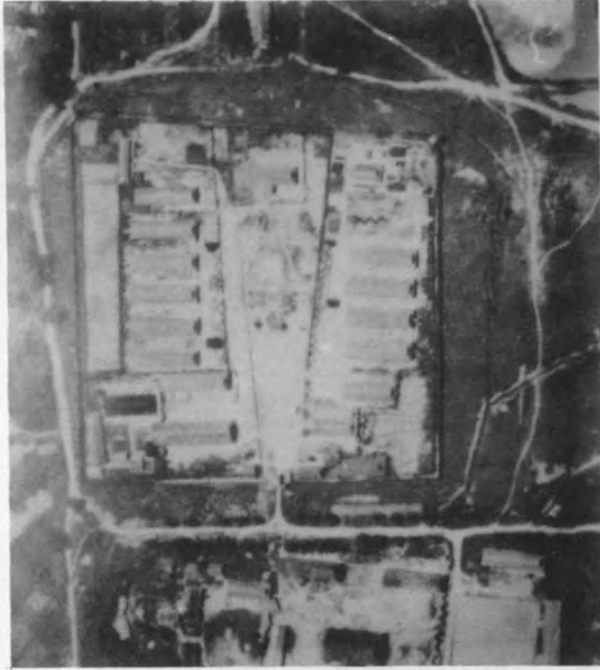




#4

2 1500

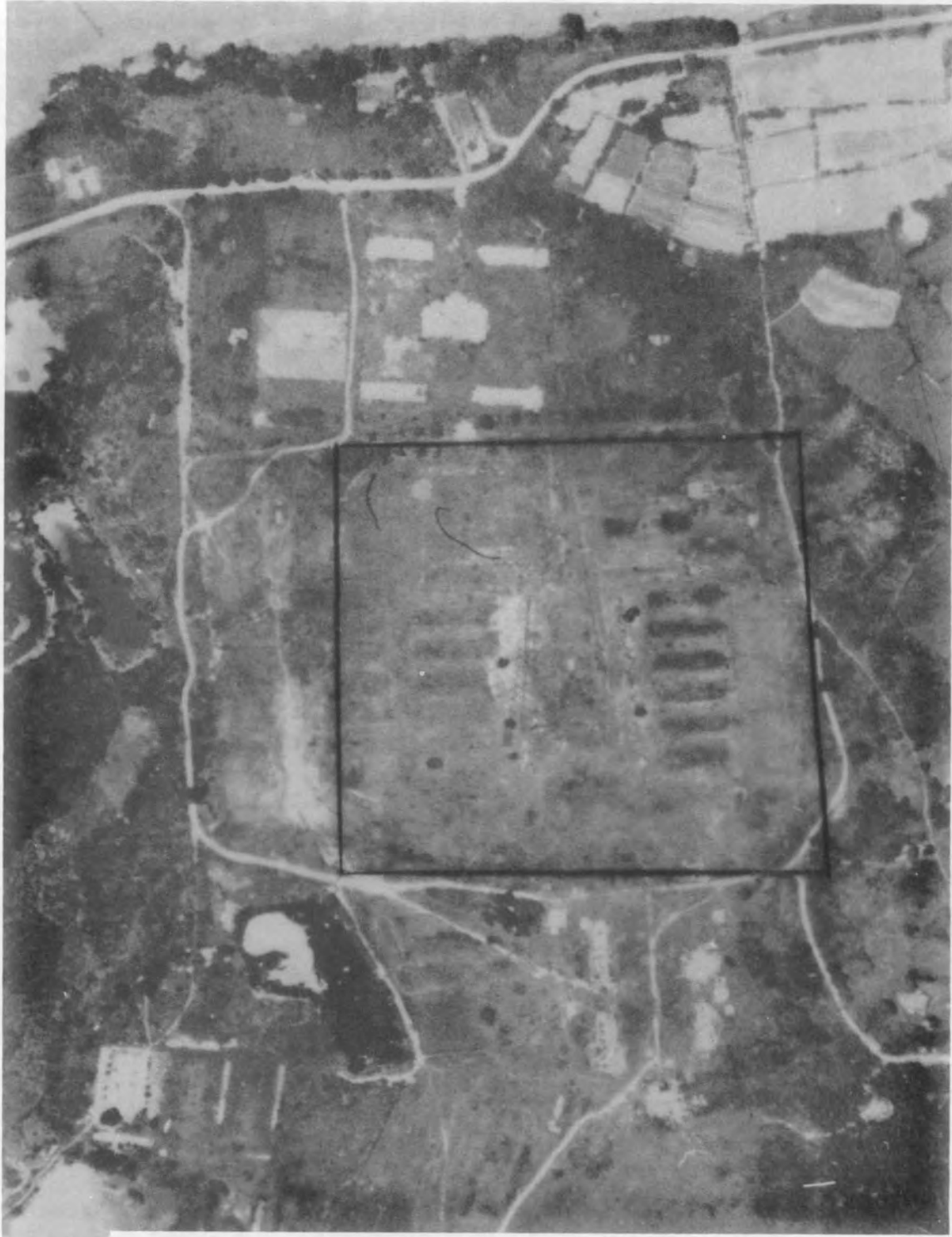
13 070



N-40 #1

2 1501

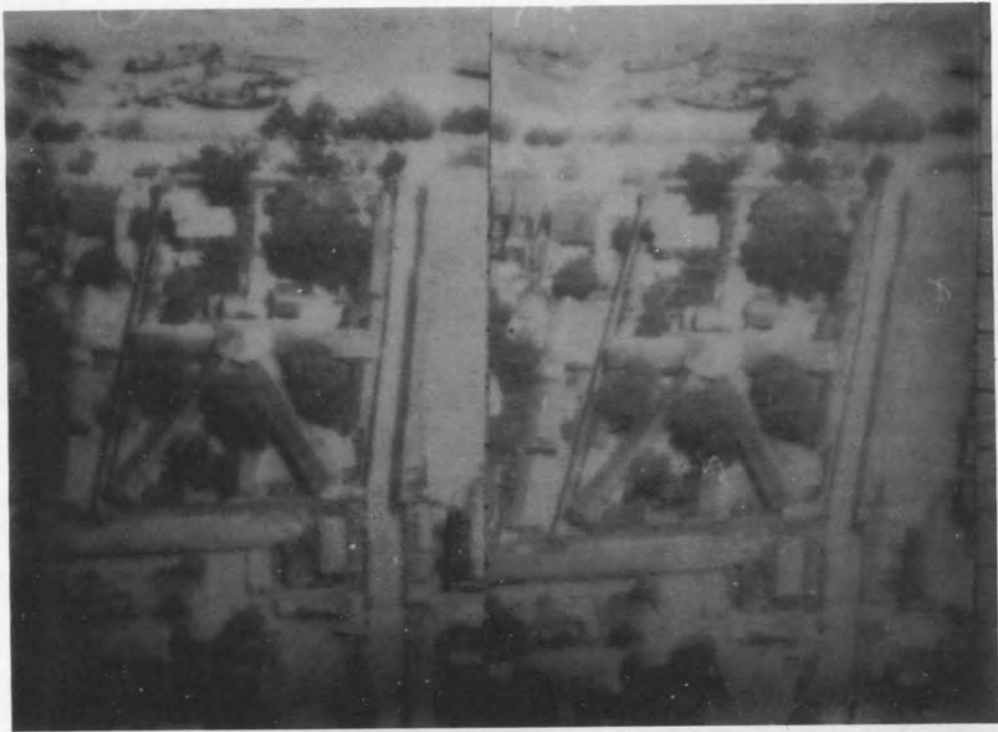




10 072

N-40  
#2

2 1502



13 073

N-41 #1

2 1503

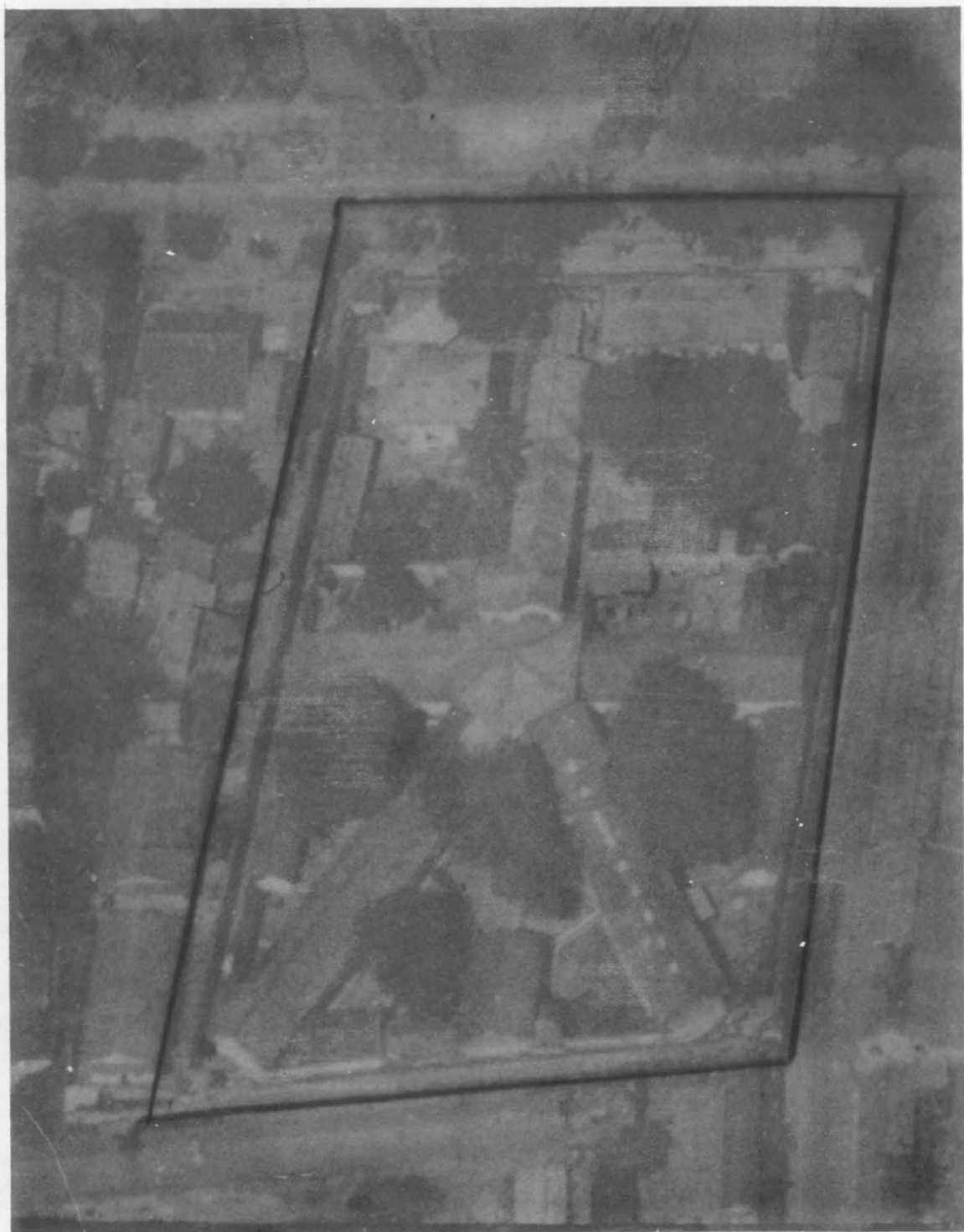




13074

N-41 #2

2 1504



13 075

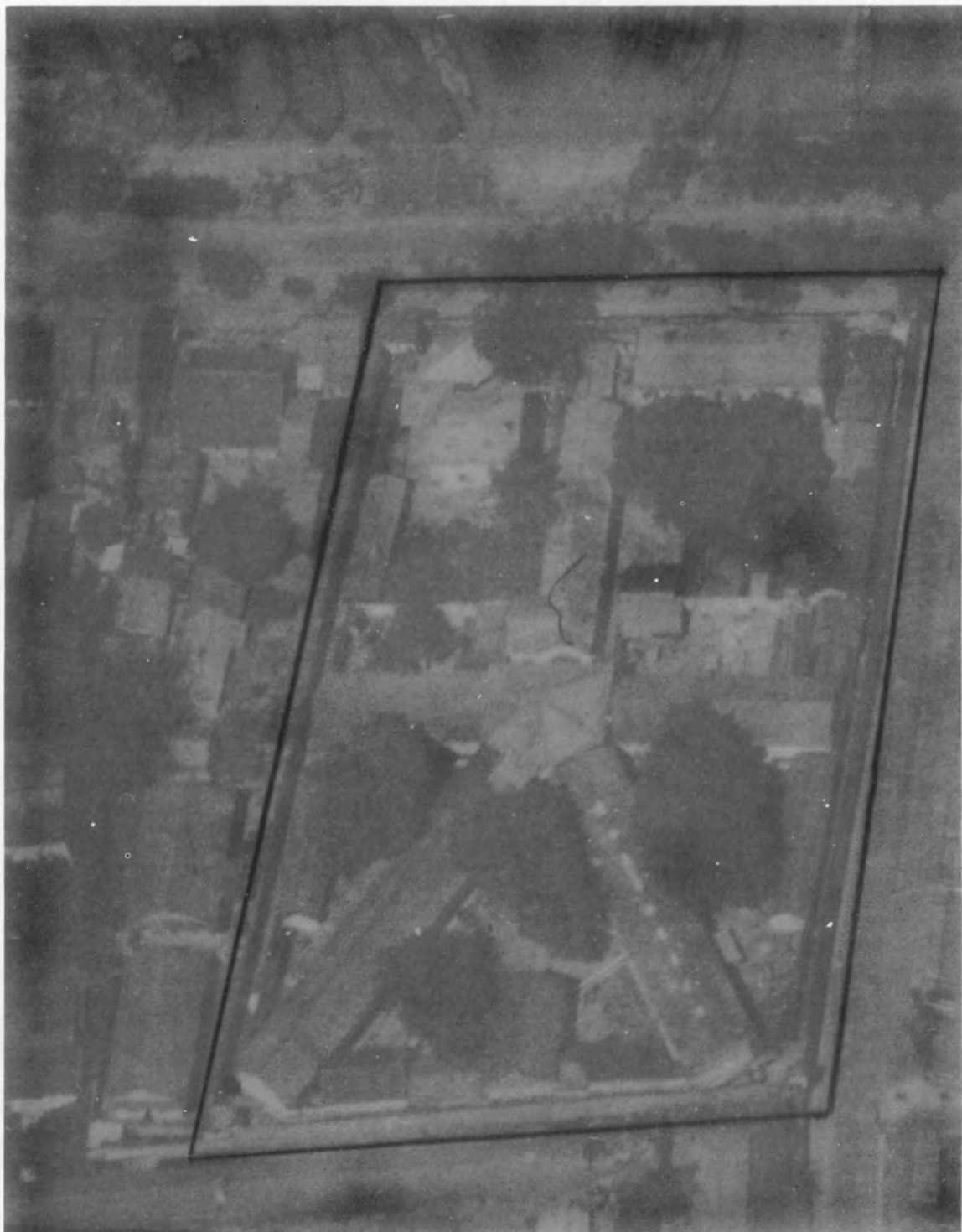
N41 #3

2 1505

18 076



2 1506



N41 #5

2 1507

228 81

BY CAMP M-1

MARITIME HISTORY

1977

82081

NORTH VIETNAM

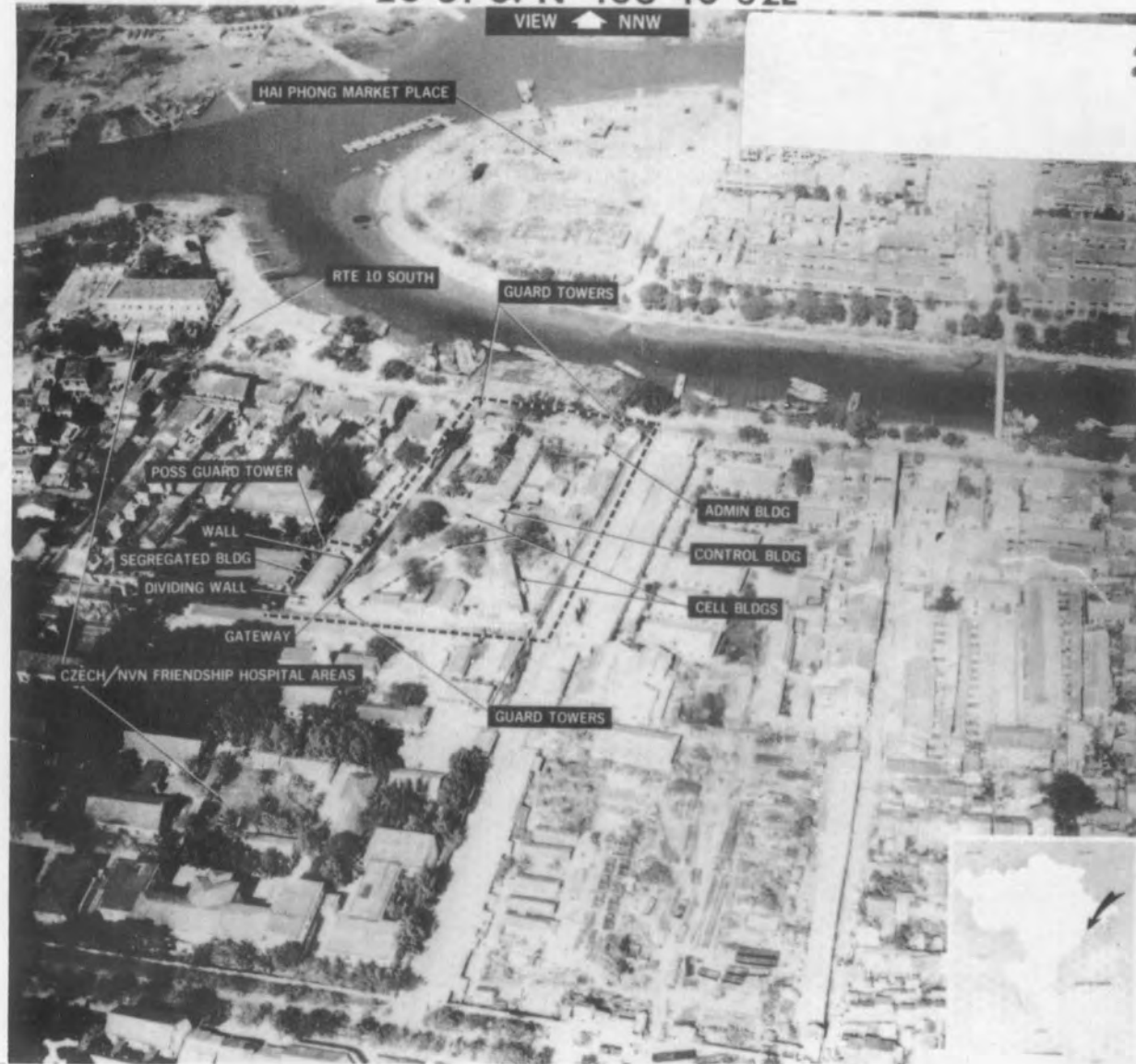
PW CAMP N-41

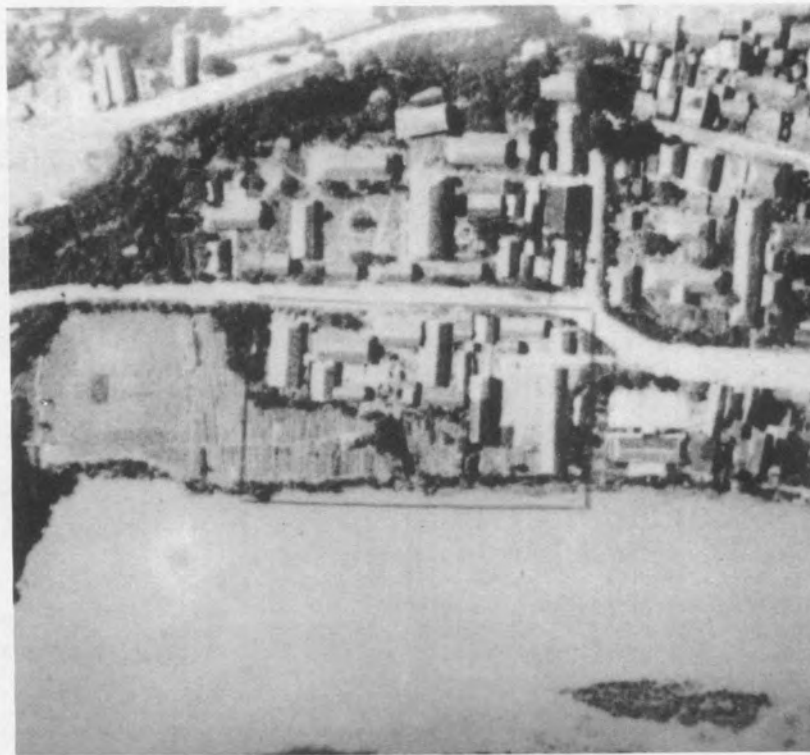
#6

20 51 07N 106 40 32E

VIEW  NNW

2 1508

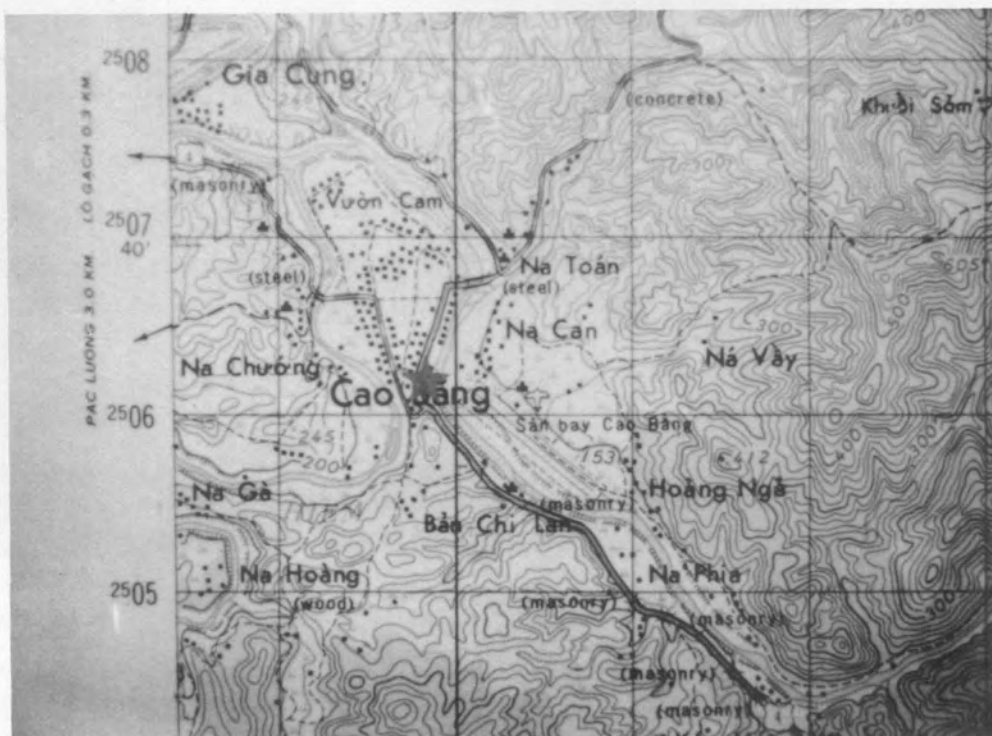




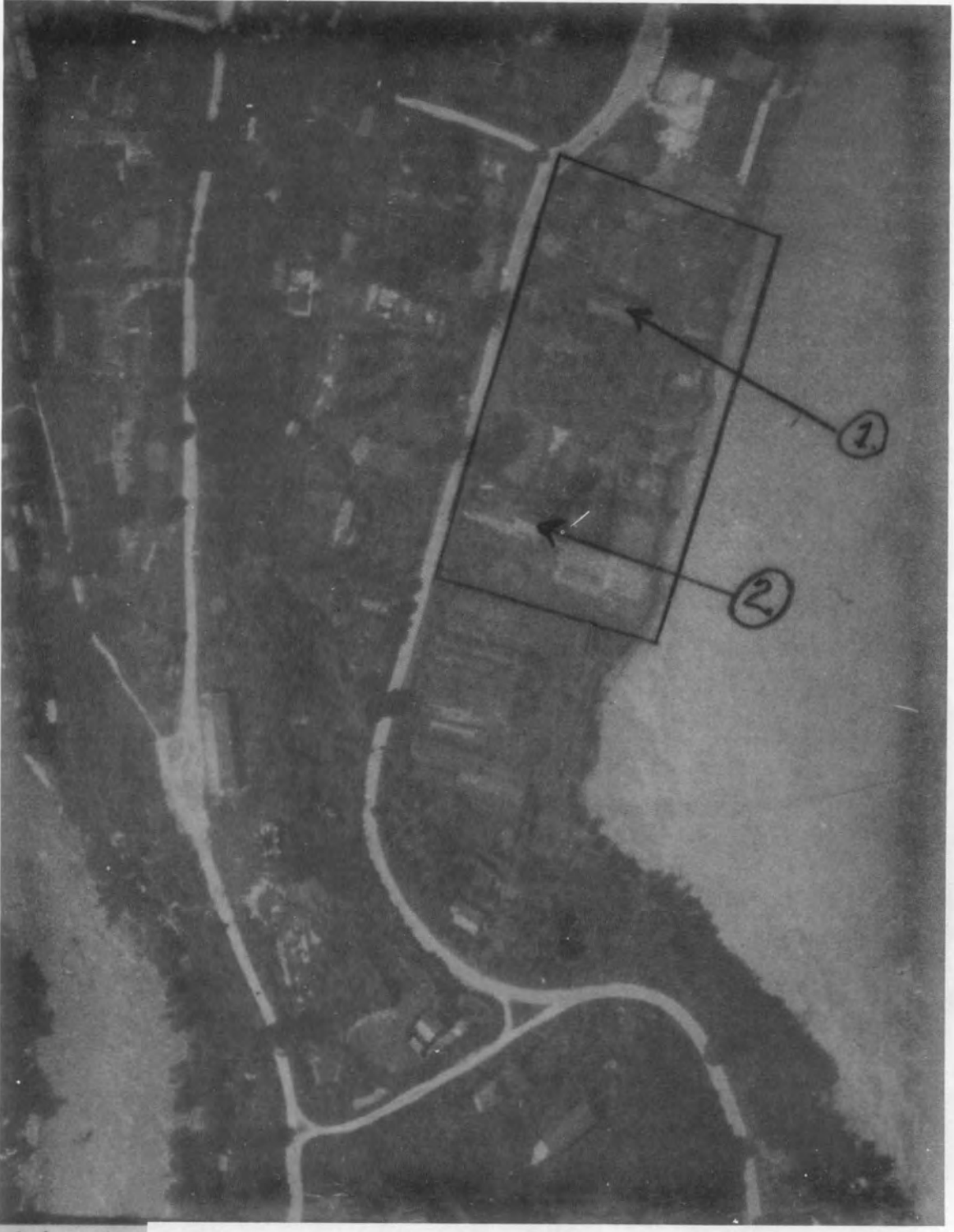
13 079

N-42 #1

2 1509



13 180



N42  
#2

2 1510

13 081



N42 #3  
2 1511

N-42

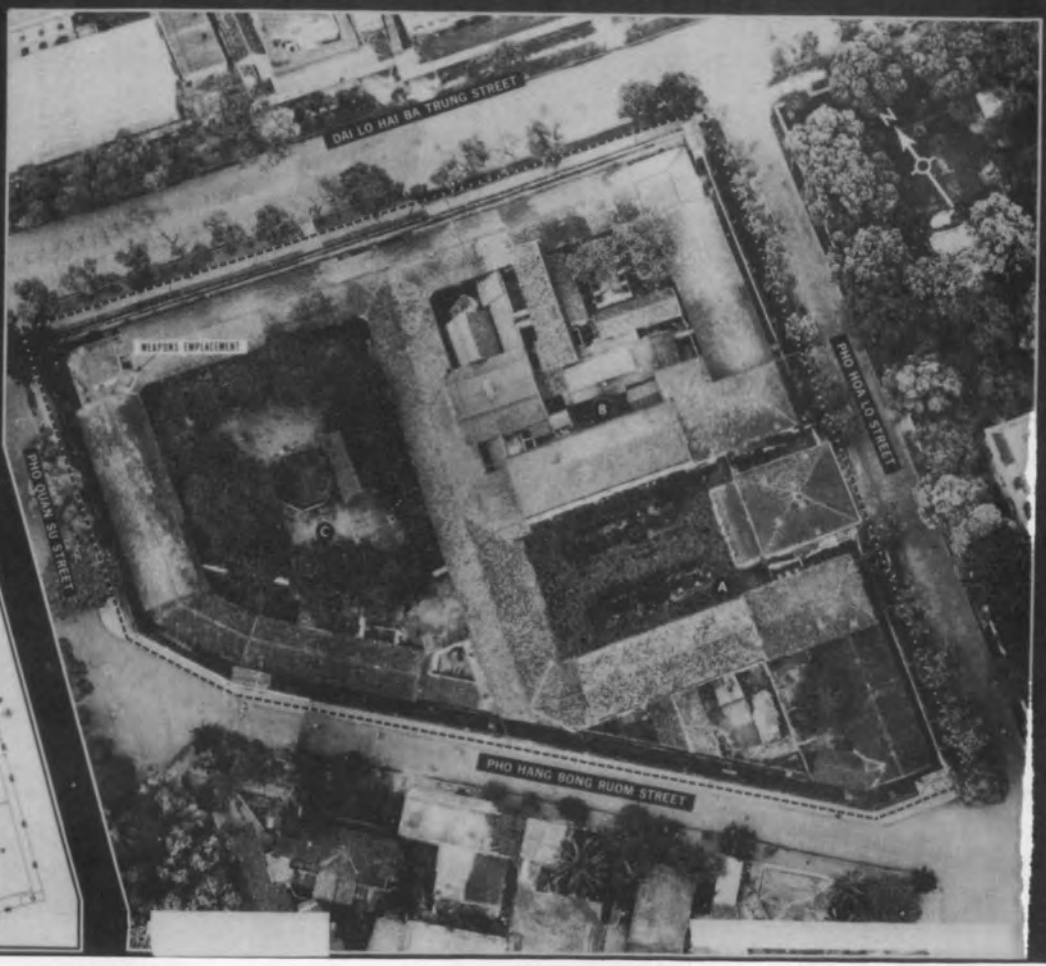
780

NORTH VIETNAM

2 1512

N-43

210126N 1055101E



LEGEND

- WALL
- - - FENCE
- GUARDTOWER
- GATE
- - - AREA OUTLINE
- AREA ENTRANCE/PASSAGEWAY

AREA 'A'

- 1, 2, 12, 14. INTERROGATION ADMINISTRATION
2. 18. CELLBLOCKS
- 4, 5. FLOWER BEDS/SHRUBS
- 6, 10. PASSAGEWAYS
- 7, 11. STAIRWAYS
8. GUARDHOUSE
9. ENTRANCE ADMINISTRATION
13. CELLBLOCK ADMINISTRATION
- 15, 16, 20, 21. SUPPORT BUILDINGS
16. BUNKER
17. WATER TANK

AREA 'B'

- 1, 2, 6, 15. CELLBLOCKS
- 3, 5, 16, 17, 18, 19, 22. SUPPORT BUILDINGS
4. LAUNDRY

AREA 'B' (CONTINUED)

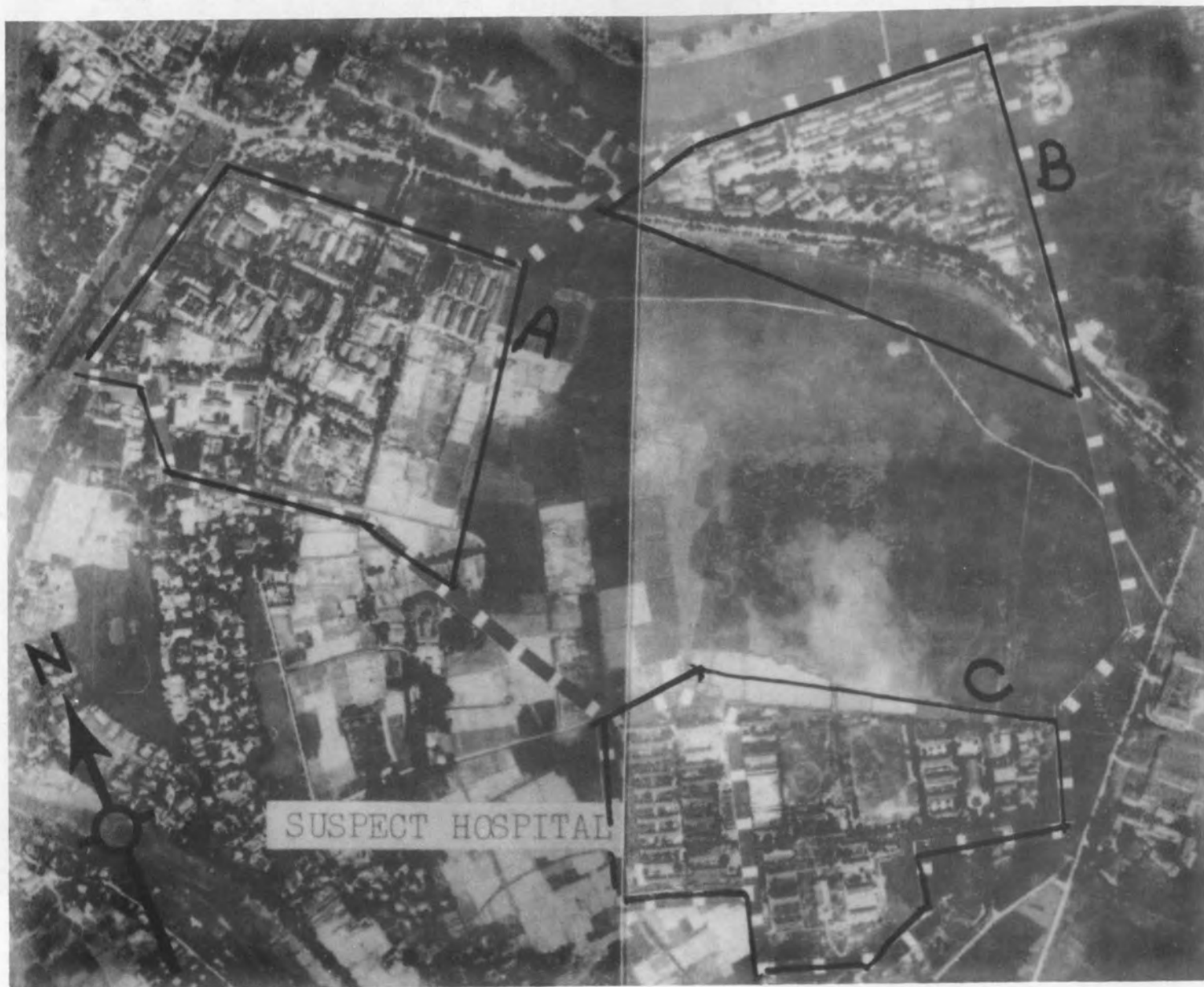
1. CELLBLOCK DISPENSARY
8. WASH HOUSE
- 9, 13. POORABLE KITCHENS
17. CELLBLOCK SUPPORT

AREA 'C'

1. GUARD HOUSE
- 2, 3, 4, 8, 9, 10, 14. CELLBLOCKS
- 5, 7. INTERROGATION STORAGE
6. PAVILION
- 11, 12, 13. SUPPORT BUILDINGS
14. CELLBLOCK
15. CELLBLOCK DISPENSARY
17. INTERROGATION SHED
18. VOLLEYBALL COURT

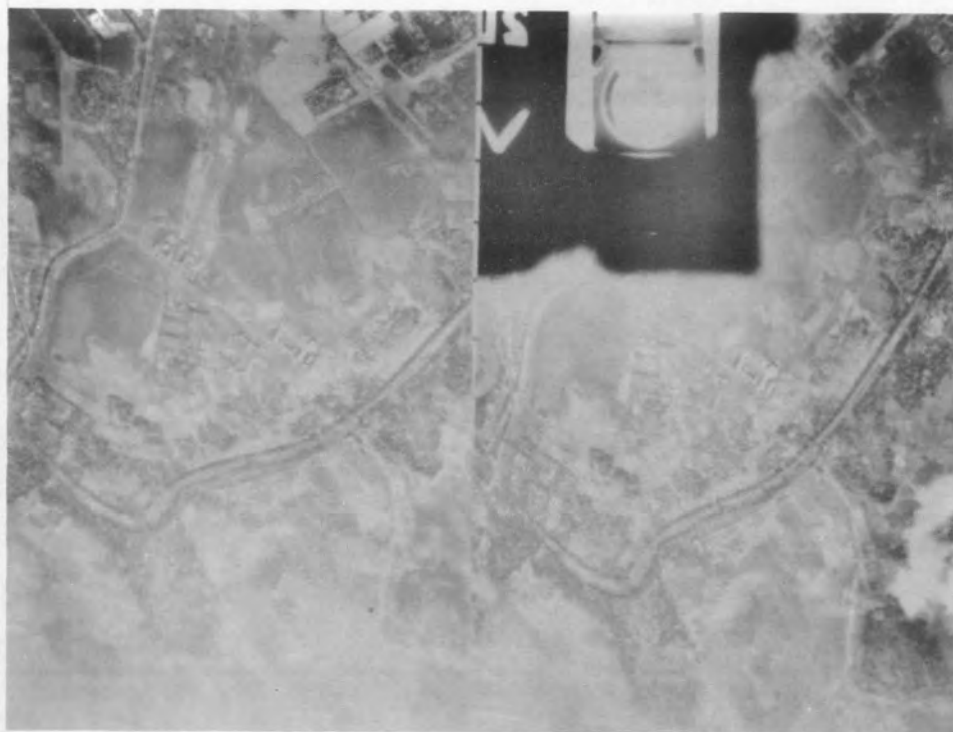
B082

08051



N44 #1

2 1513

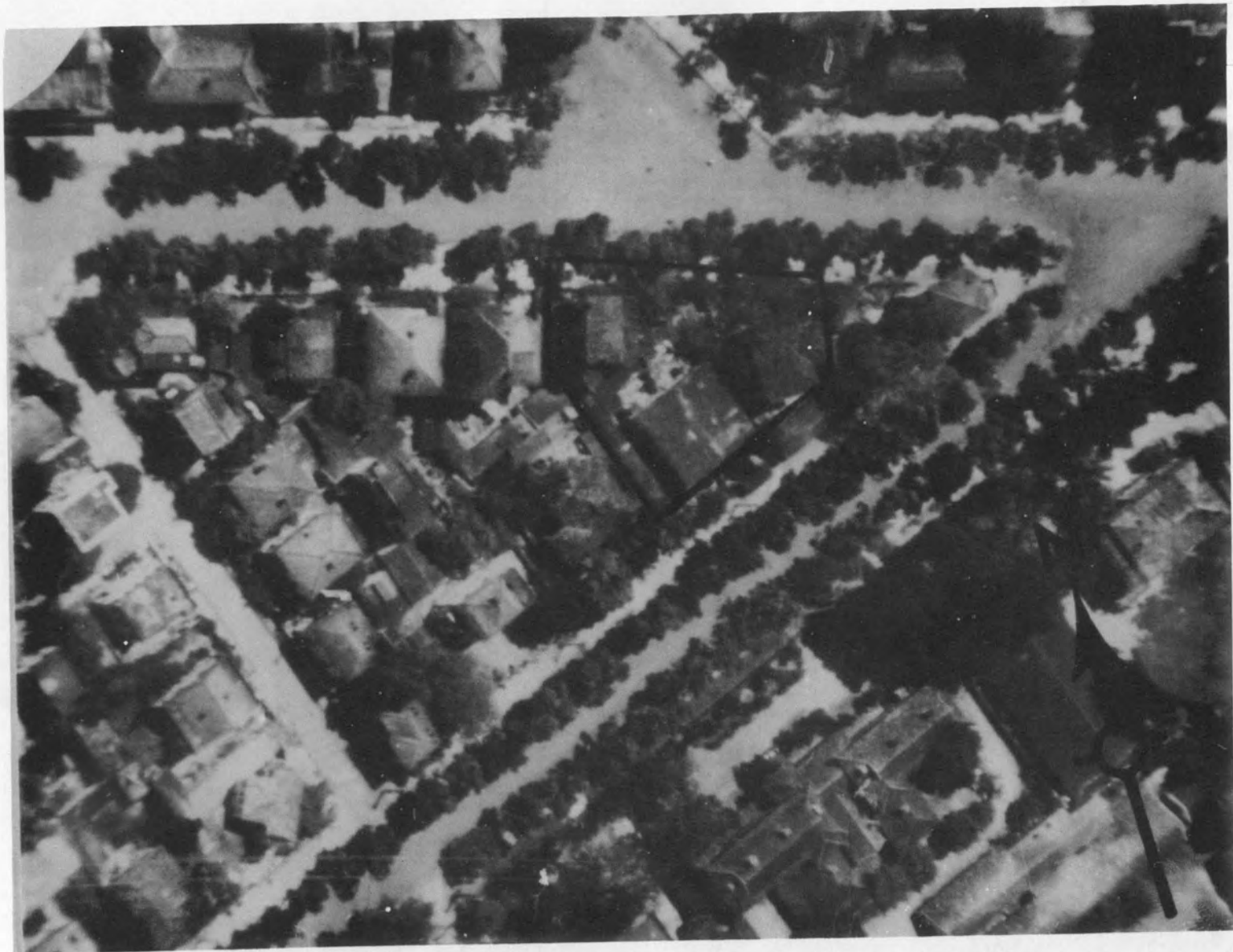


13 084

2 1514

N-44 #2





N45 #1

2 1515

13 085



13 086

2 1516

N45 #2

130871



N-45  
GEO COORDS: 210142N/1055045E  
UTM COORDS: WJ87852541

N-45  
#3

DES: 1, TGT CONSISTS OF THREE TWO-STORY BLDGS. ONE BLDG  
FACING THE MILITARY HOSPITAL APPEARS  
TO BE A POSS MILITARY HQ AND IS APRX 40' SQUARE.  
THE OTHER TWO BLDGS APPEAR TO BE APARTMENT BLDGS.  
TGT IS LOCATED IN A TRIANGULAR BLOCK IN DOMTOWN  
HANOI.

7345-02-763

2 1517



N-45 #4

2 1518



13088

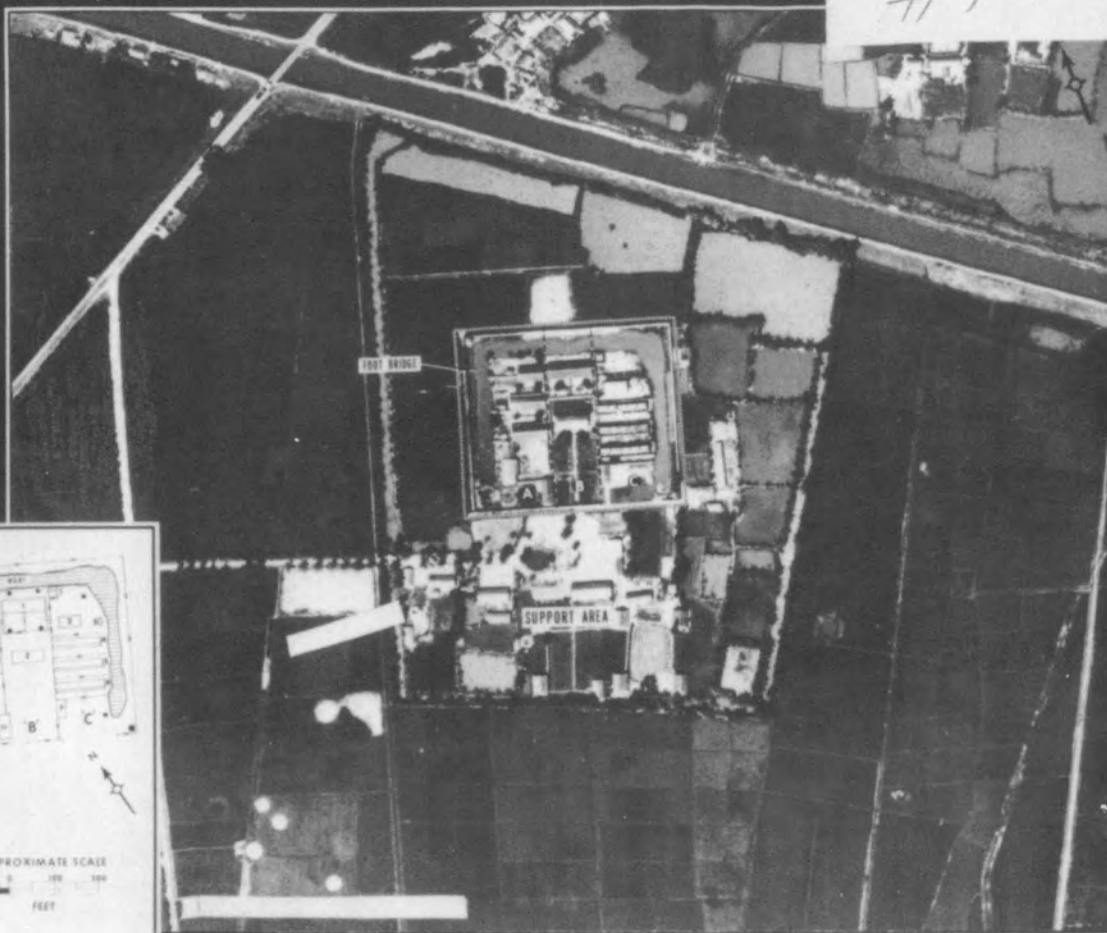
NORTH VIETNAM

N-46

19 48 10N 105 45 47E

#1

2 1519



**LEGEND**

- WALL
- WELL
- GUARD TOWER
- GATE

**AREA X:**

- 1,3,5,7,9 SUPPORT BUILDINGS
- 2,4,6 POSSIBLE PW QUARTERS
- 8 MESS FACILITY
- 10 LATRINE SHOWER
- 11 ADMINISTRATION BUILDING

**AREA Y:**

- 1 POSSIBLE PW QUARTERS WITH WALL ENCLOSURES
- 2 ADMINISTRATION BUILDING

**AREA Z:**

- 1 SUPPORT BUILDING
- 2 PROBABLE STORAGE BUILDING
- 3 LATRINE SHOWER
- 4,5,6 POSSIBLE PW QUARTERS WITH WALL SEPARATORS UNDER RECONSTRUCTION
- 7 SUPPORT BUILDING

A schematic diagram showing the layout of the installation with various buildings and areas labeled with letters A, B, C, and numbers 1 through 11. A north arrow is also present.

**APPROXIMATE SCALE**

10 0 100 200  
FEET

13 089



13 09U

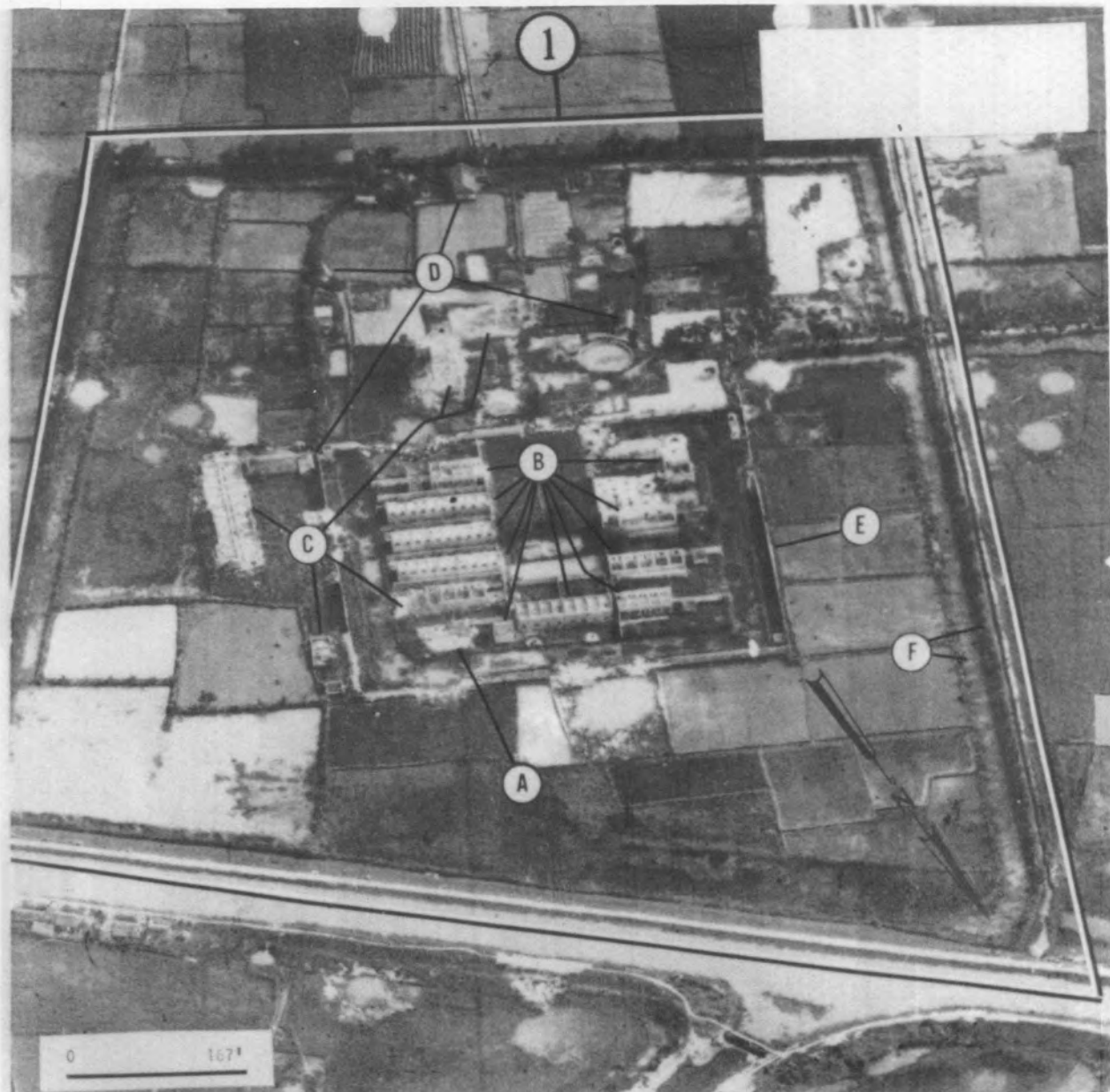
N-46 #2

2 1520



SELECT PRINT

13 09L



N-46

GEO COORD: 194810N 1054545E  
UTM COORD: WG 79908968

2 1521

194810N 1054547E

N-46 #3  
H759

- 1A. ONE BLDG, DESTROYED
  - 1B. TEN BLDGS, MASONRY WALLS STANDING, NO ROOFS.
  - 1C. FIVE BLDGS, HVY DAMAGE
  - 1D. ONE SERV WOODEN BLDG AND THREE SHEDS ALSO SERV.
  - 1E. INNER SECURITY WALL, INTERDICTED SIX PLACES
  - 1F. OUTER MOAT AND HEDGEROW.
- INSTALLATION DOES NOT APPEAR CAPABLE OF FUNCTIONING AS PW DETENTION FAC.



2 1522

13 092

CHANGE OF STATUS OF SUSPECTED PW DETENTION  
INSTALLATION, N-46

13 093



N-46 #5

2 1523

TGT #	<u>N-46</u>	AIF	_____
LOC	<u>194810 N</u>	<u>11054545 E</u>	UPIR # _____
G PAPER			

LEGEND:

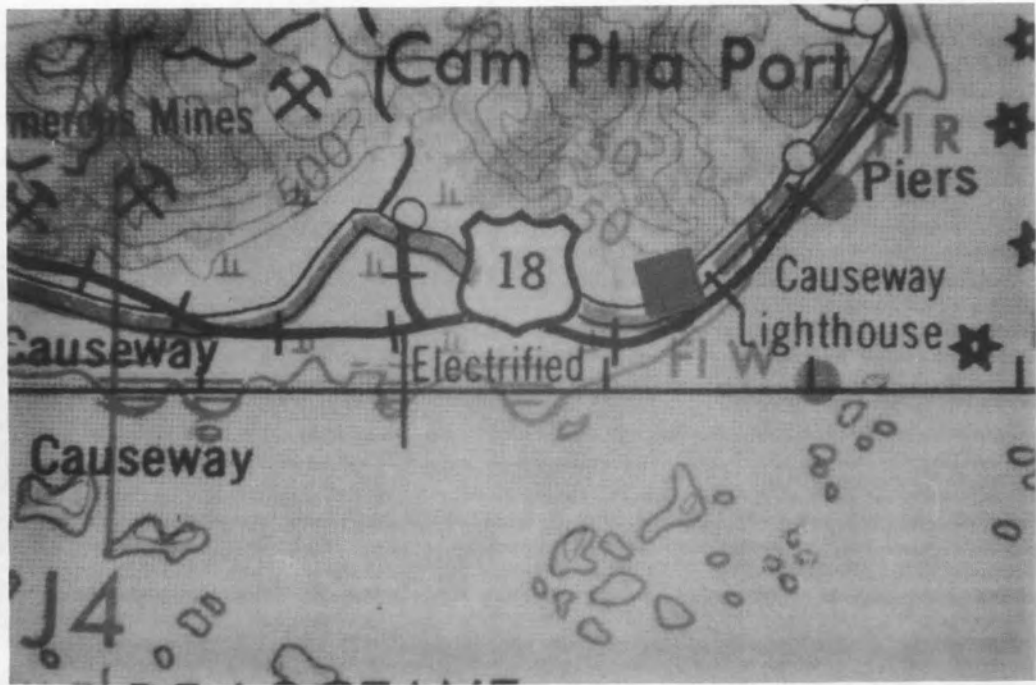
- |                          |                       |
|--------------------------|-----------------------|
| 1. Destroyed             | 5. Breaks in Wall     |
| 2. Severely Damaged      | 6. Moderately Damaged |
| 3. Superficially Damaged | 7. Undamaged          |
| 4. Dismantled            |                       |



13 094

N46 #6

2 1524



13 095

2 1525

21-0045N/107-21-00E



930 PT



N-47

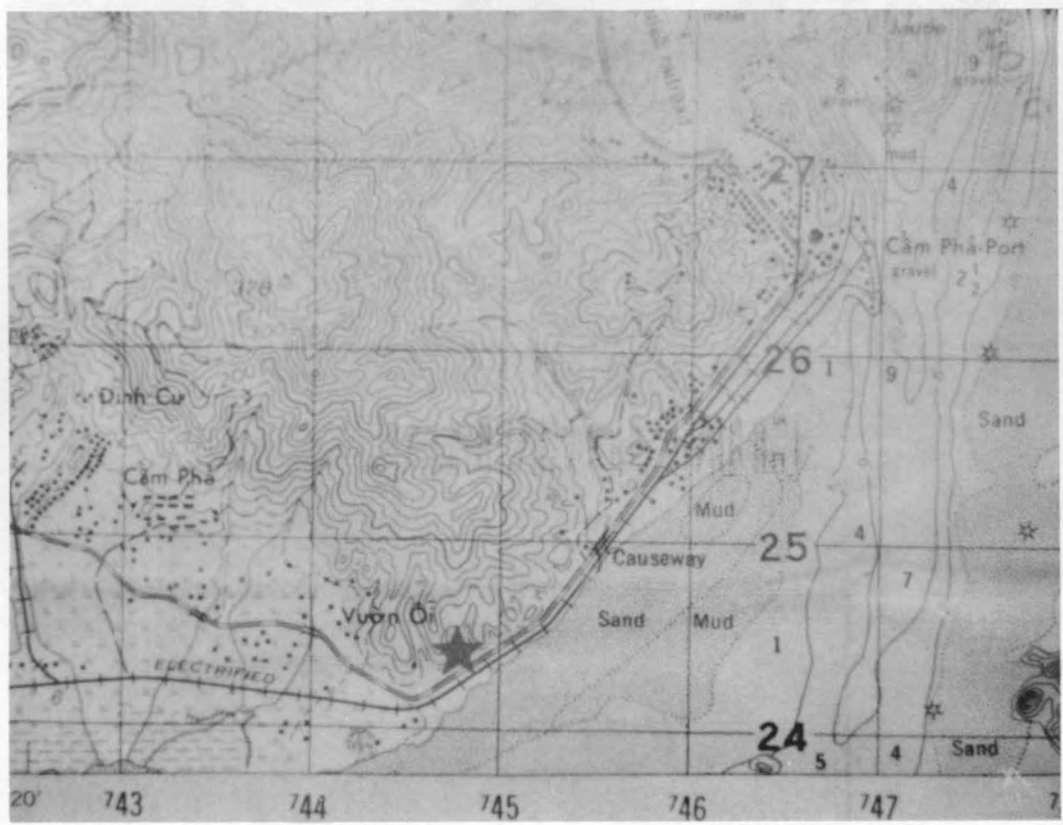
2 1526



13 097

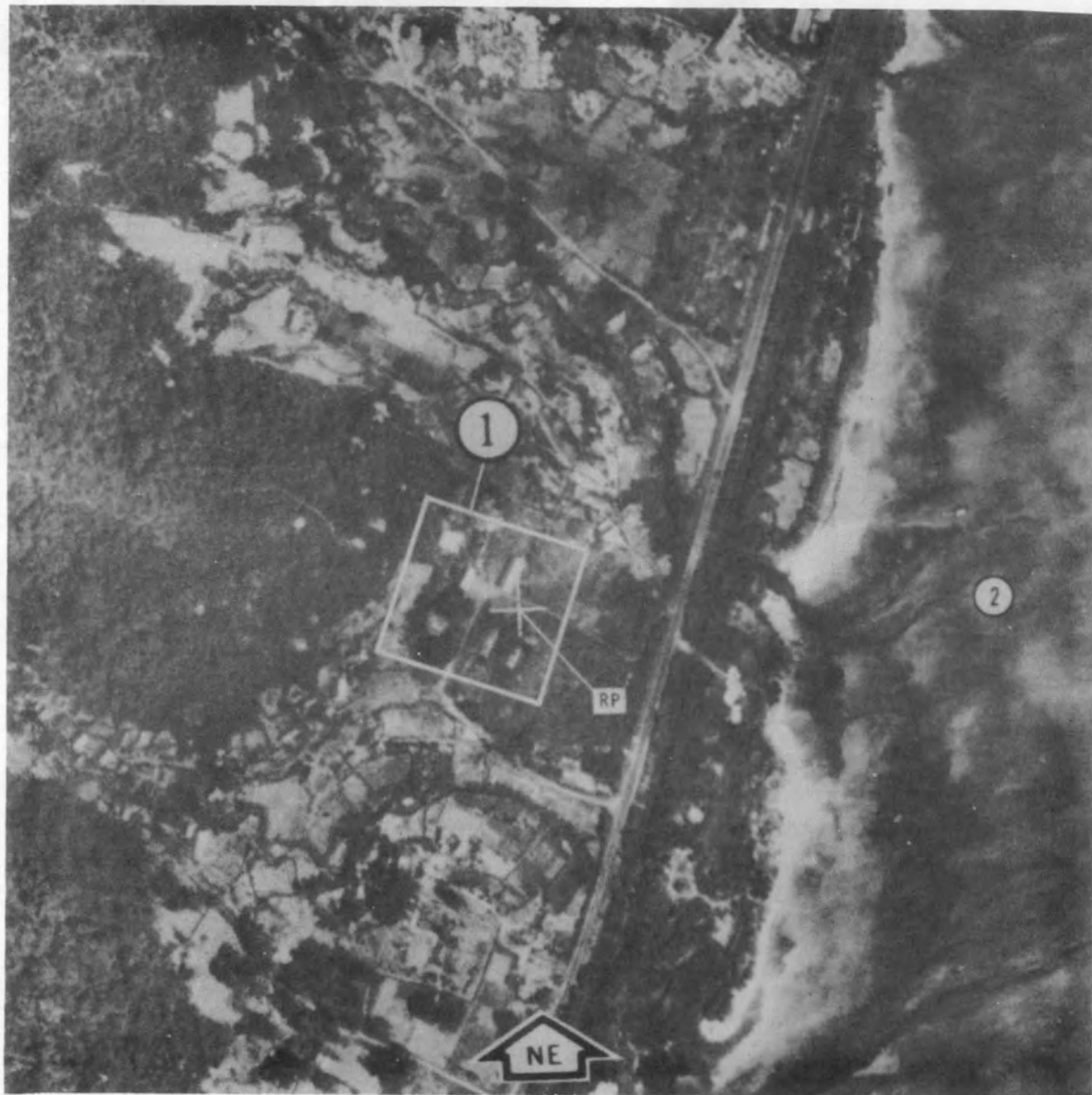
N-47 #3

2 1527



TGR

13 098



POSS PW DETN INST  
21°00'20"N/107°21'25"E  
1 TARGET  
2 GULF OF TONKIN

N-47

2 1528

N-47 #4