

7345-02 # 765

2 1574

DES: 1. 101 IS A FORMER JAIL, LOCATED ON A ISLAND IN THE
RED RIVER, (WEST), DIRECTLY UNDER PAUL DOYER IN.
1 APPEARS TO BE SURROUNDED BY LONG
RECTANGULAR BLOCS CREATING AN ENCLOSED YD. CELLS
IN DISCUS (SEE) PORTION OF COMPOUND.

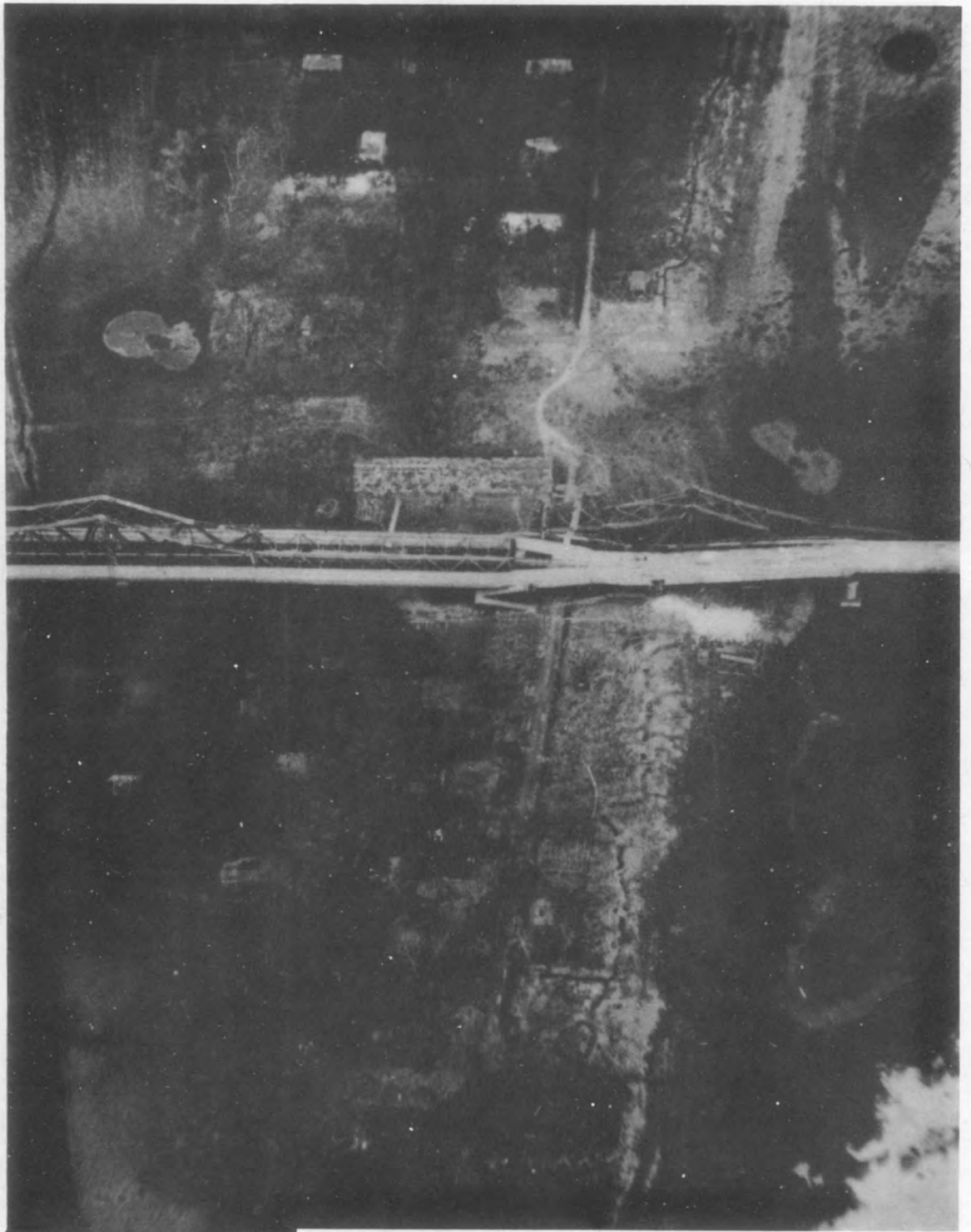
N-60
#2

N60
LTM CORPUS: W89402672
SEO CORPUS: 2102284/1055147E

1

AT FACT

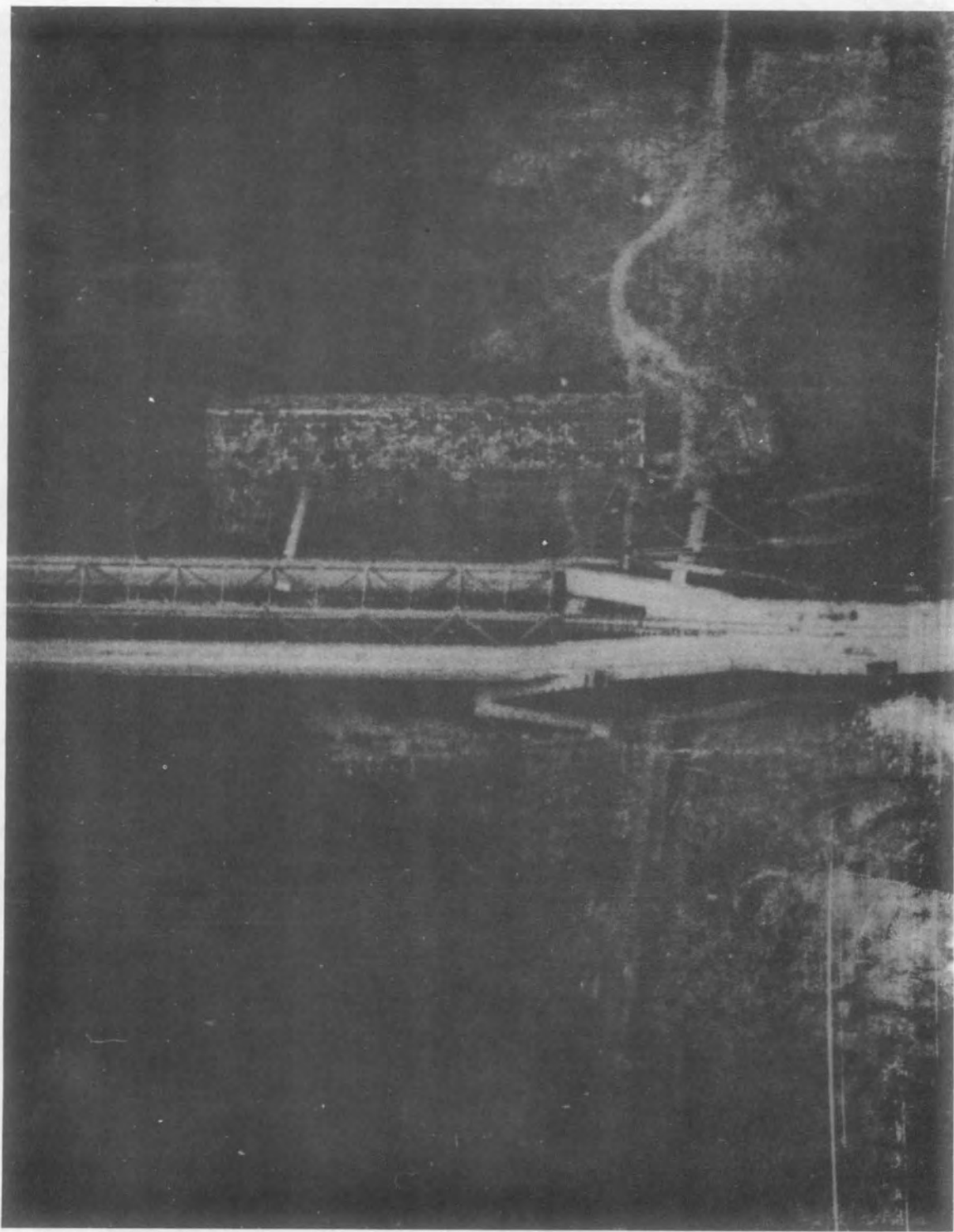
731 144



13 145

N-60 #3

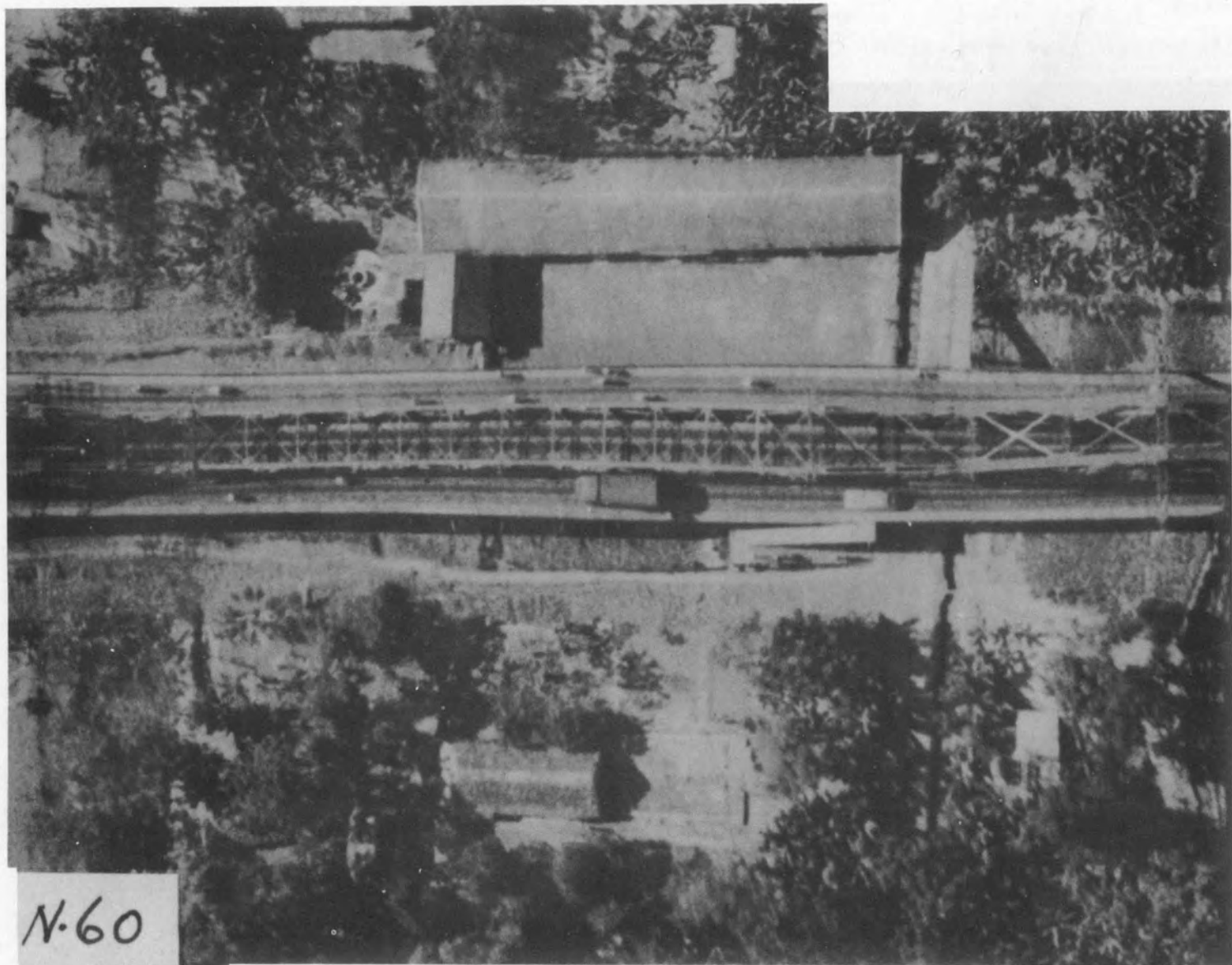
2 1575



13 146

N-60 #4

2 1576

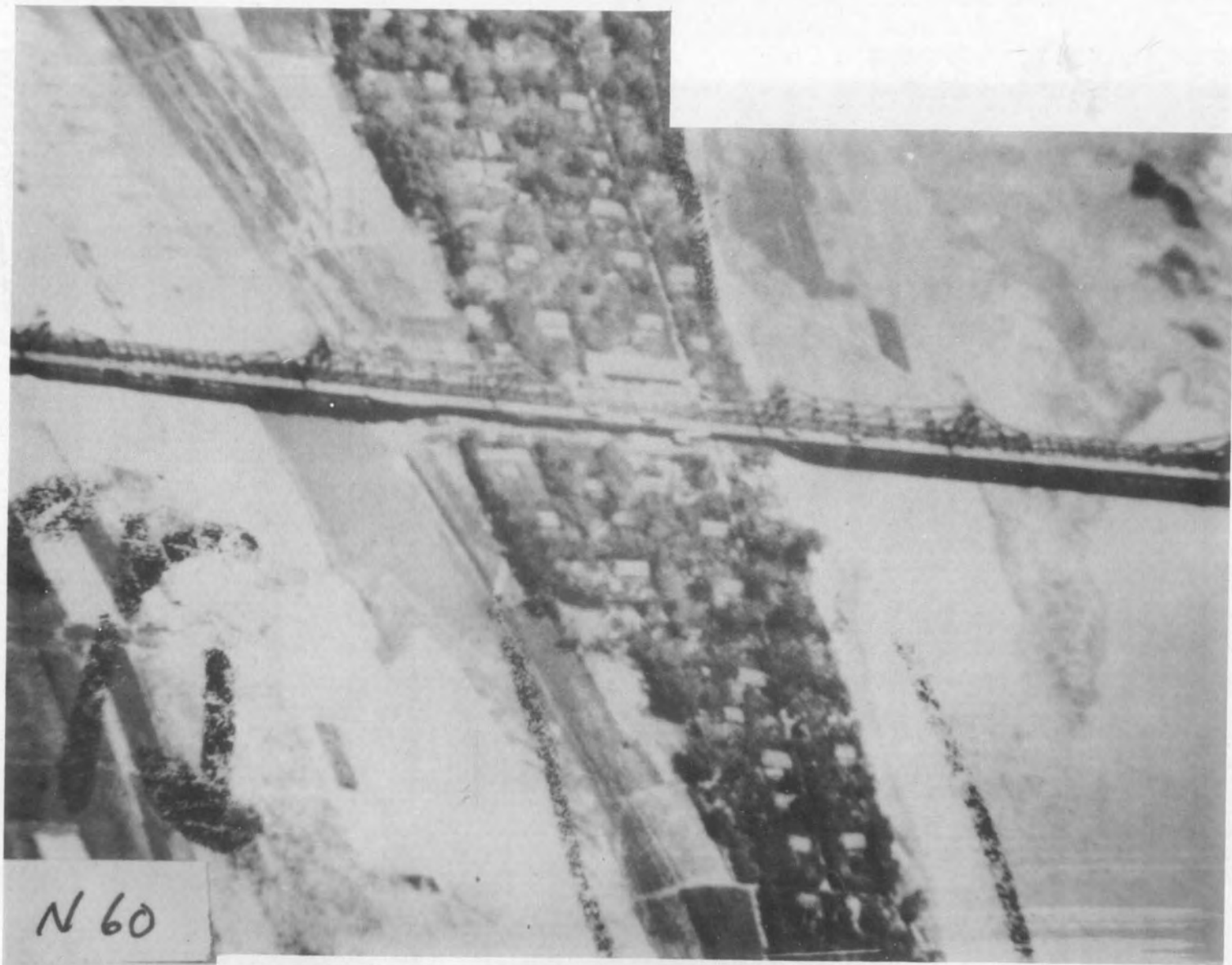


N-60

#5

2 1577

13147



N 60

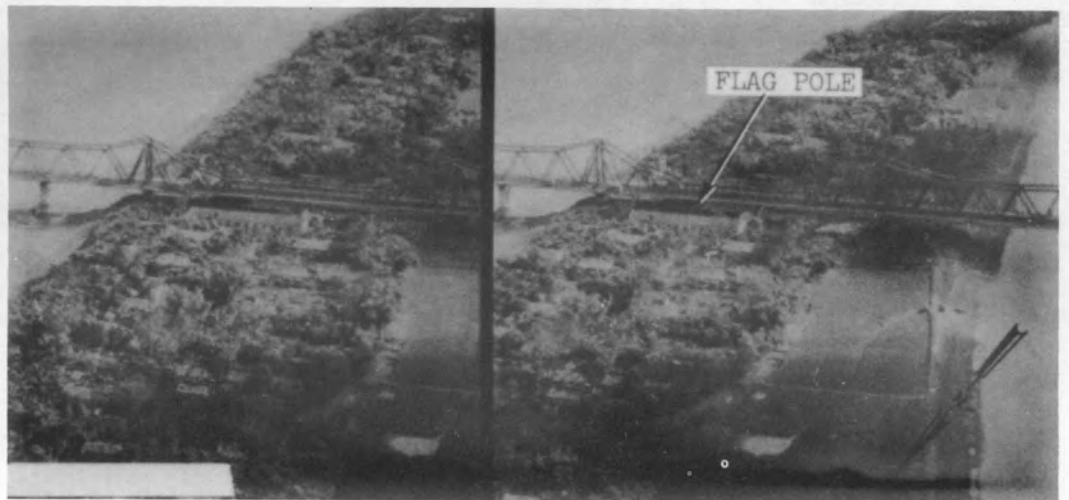
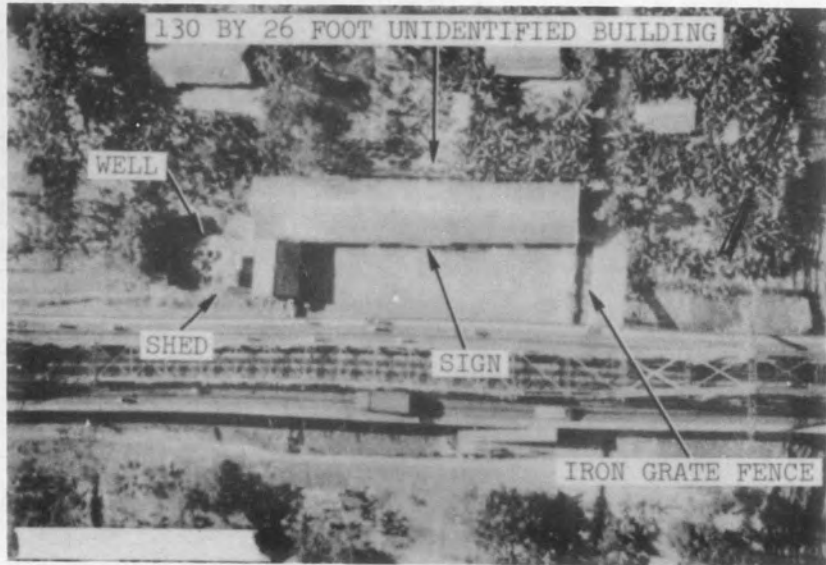
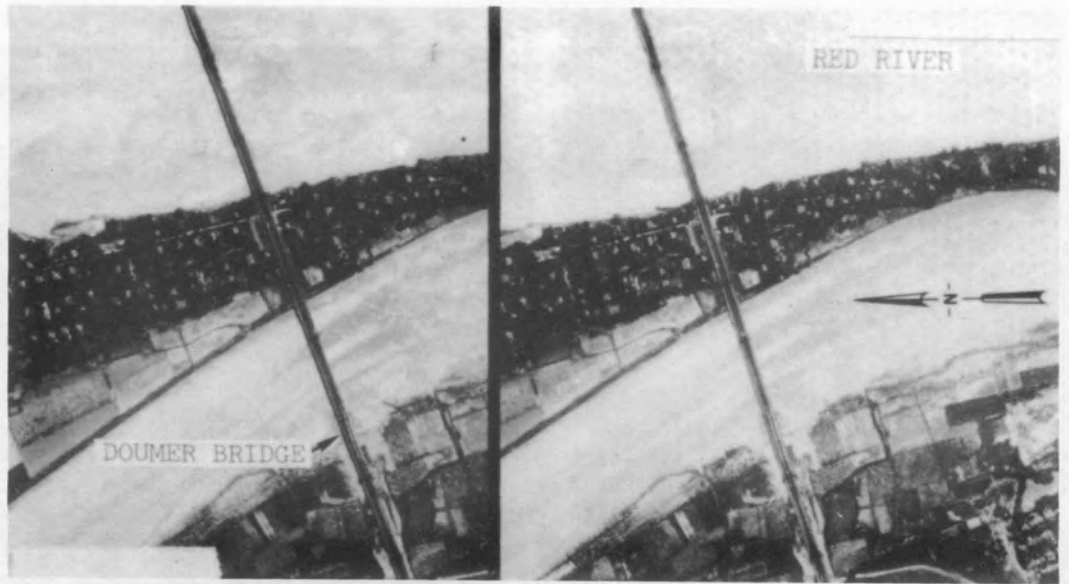
#6

2 1578

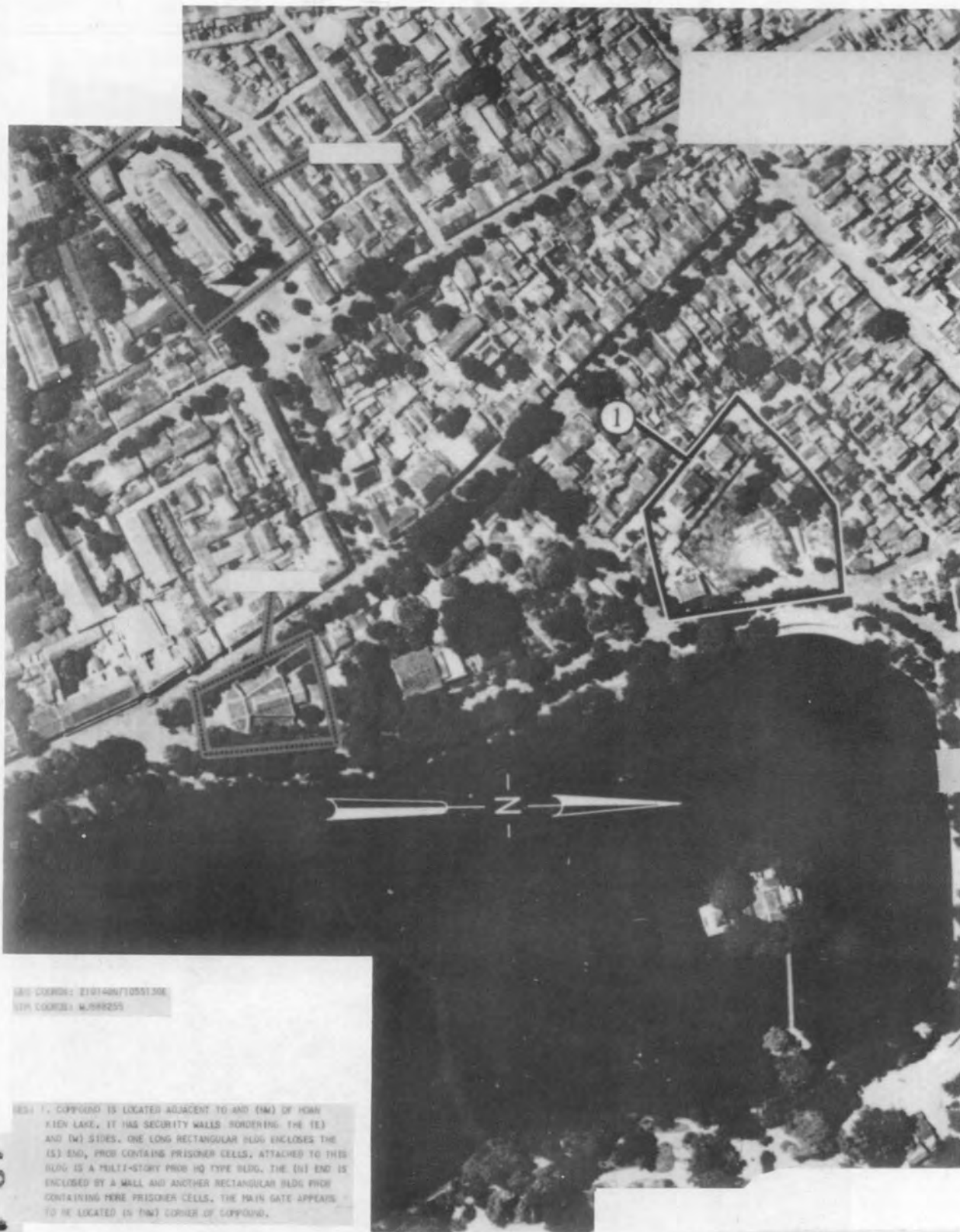
13 148

N-60
#7

2 1579



13 149



REF: 210407105510E
REF: 210407105510E

REF: 1. COMPOUND IS LOCATED ADJACENT TO AND (NW) OF HOW
KIEN LAKE. IT HAS SECURITY WALLS BORDERING THE (E) AND (W) SIDES. ONE LONG RECTANGULAR BLDG ENCLOSES THE (E) END, WHICH CONTAINS PRISONER CELLS. ATTACHED TO THIS BLDG IS A MULTI-STORY PRISON HQ TYPE BLDG. THE (W) END IS ENCLOSED BY A WALL AND ANOTHER RECTANGULAR BLDG WHICH CONTAINS MORE PRISONER CELLS. THE MAIN GATE APPEARS TO BE LOCATED IN THE (NW) CORNER OF COMPOUND.

13 150

2 1580

7345-02762

13151

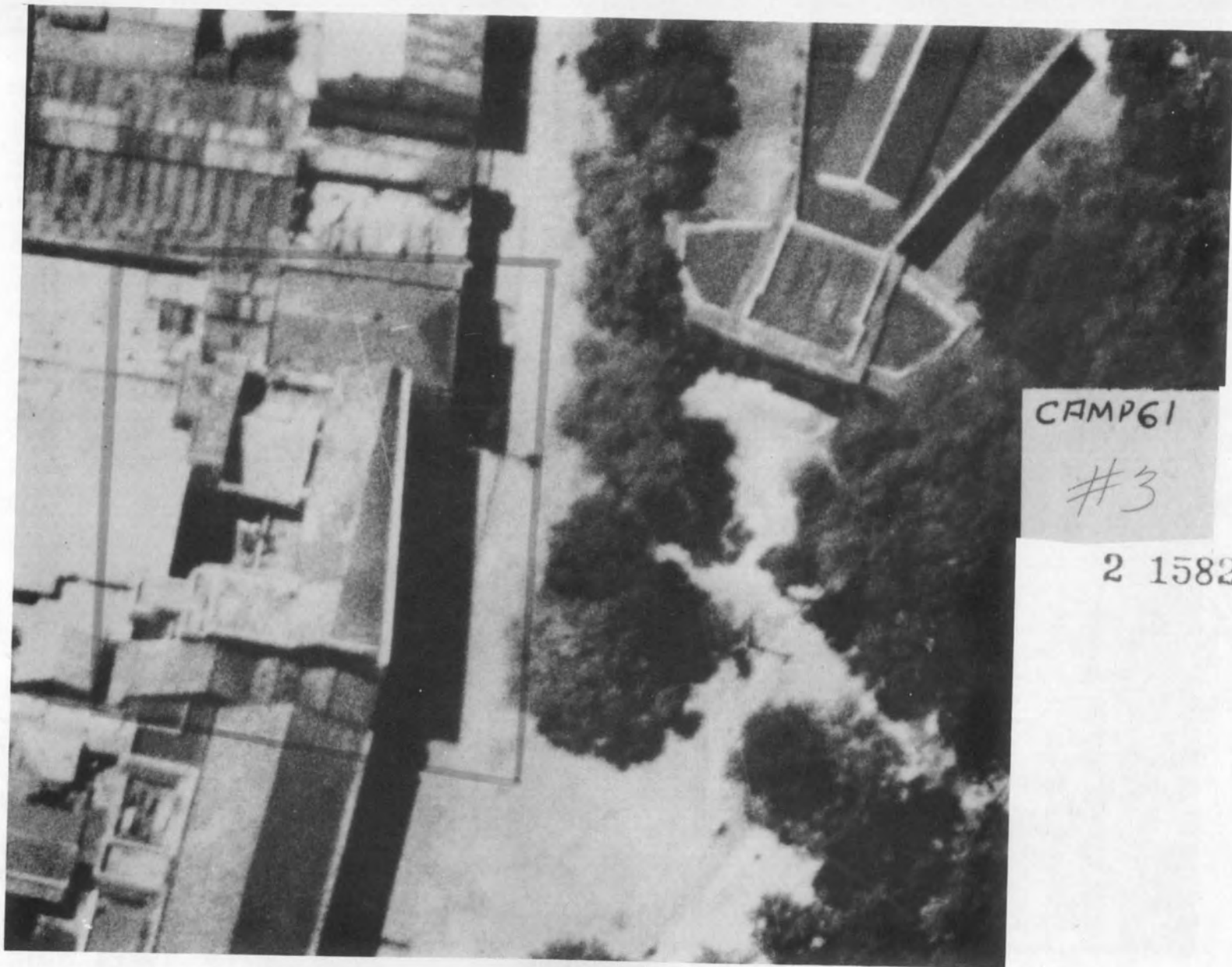


1531 0985 65

1531

CAMP 61

2 1581



CAMP 61

#3

2 1582

13 152



N61 #4

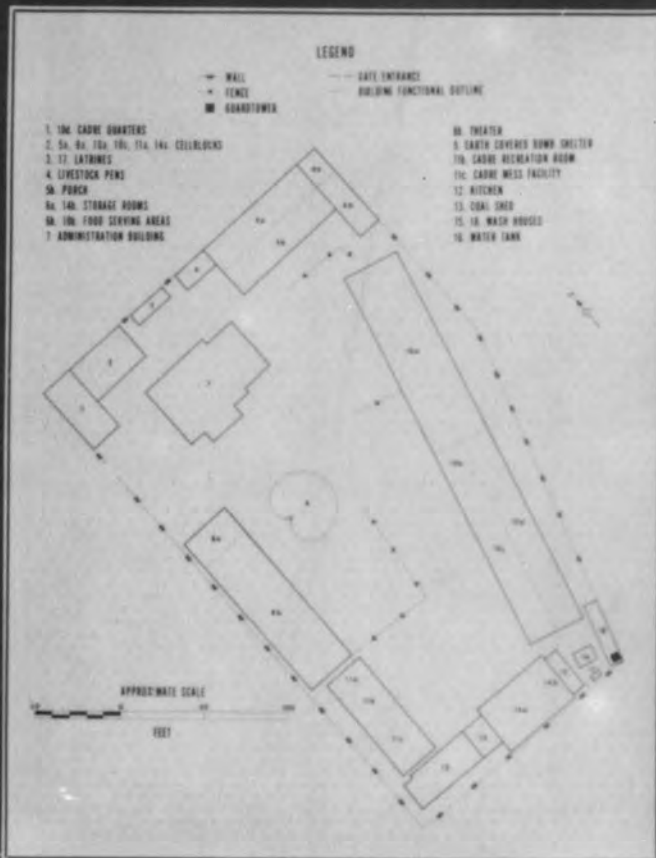
2 1583

13153

NORTH VIETNAM

N-62

ZIUZUYN IUSSIUZE



2 1584

13 154



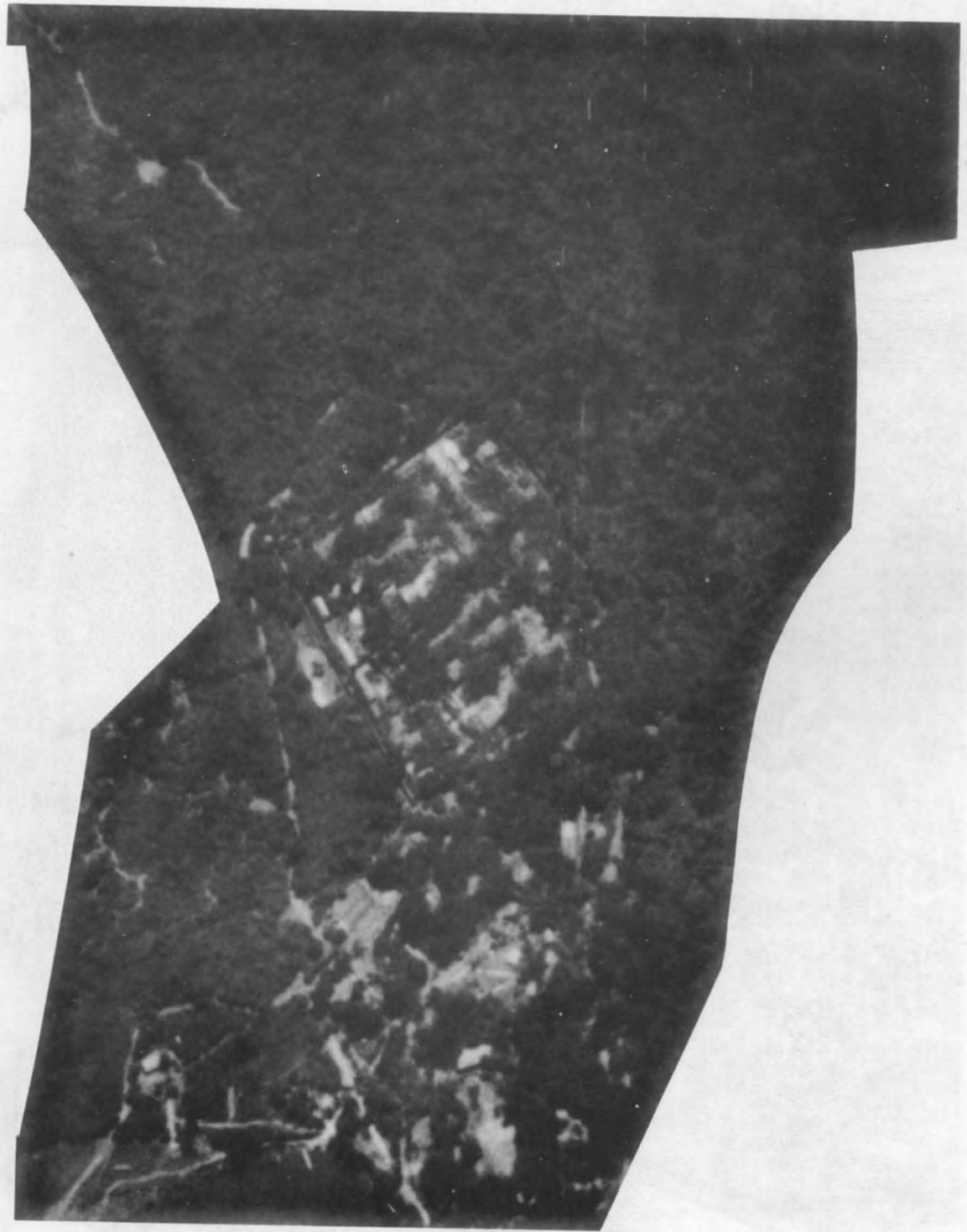
2 1585

N-63

18 155

N-64 #1

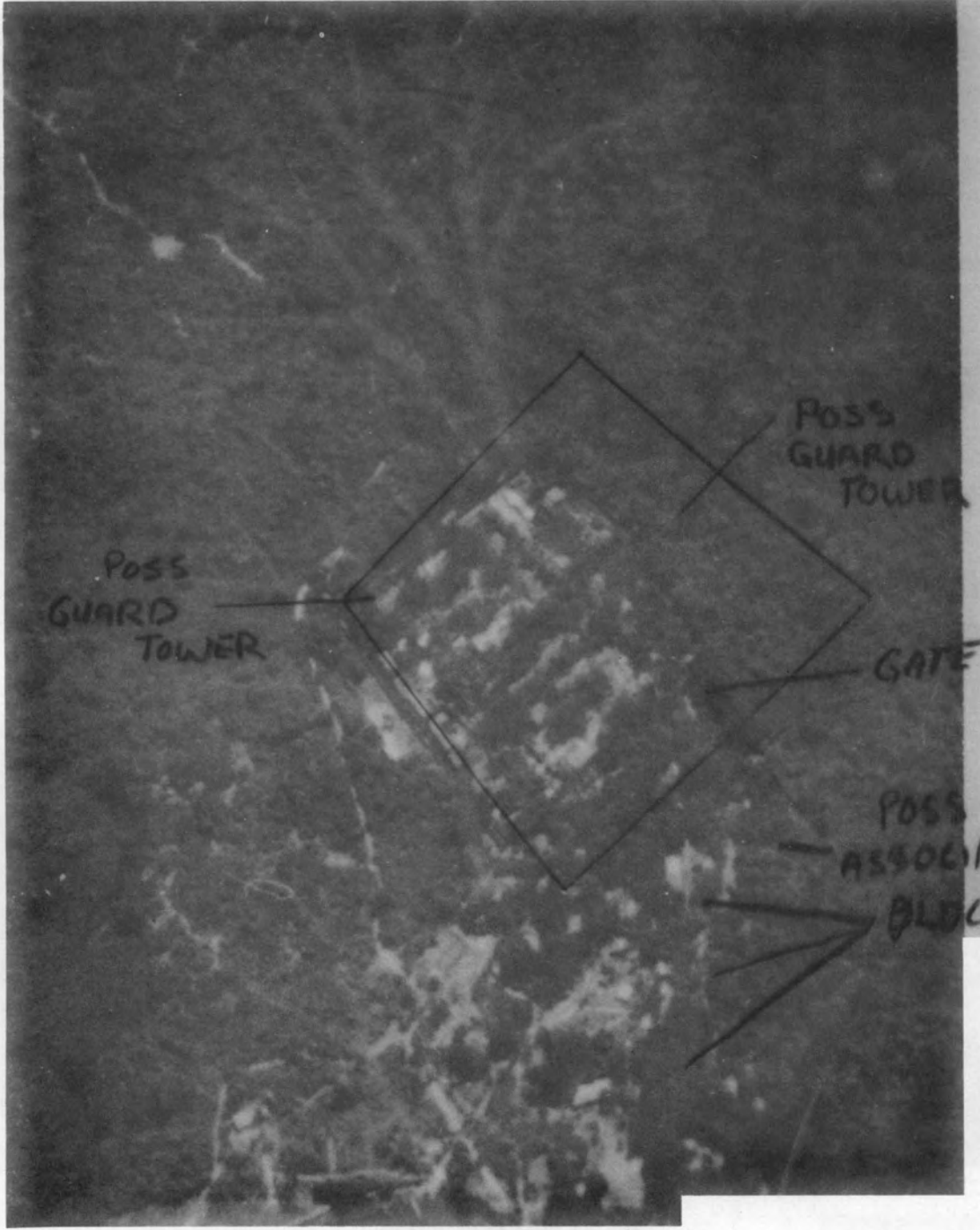
2 1586



13156

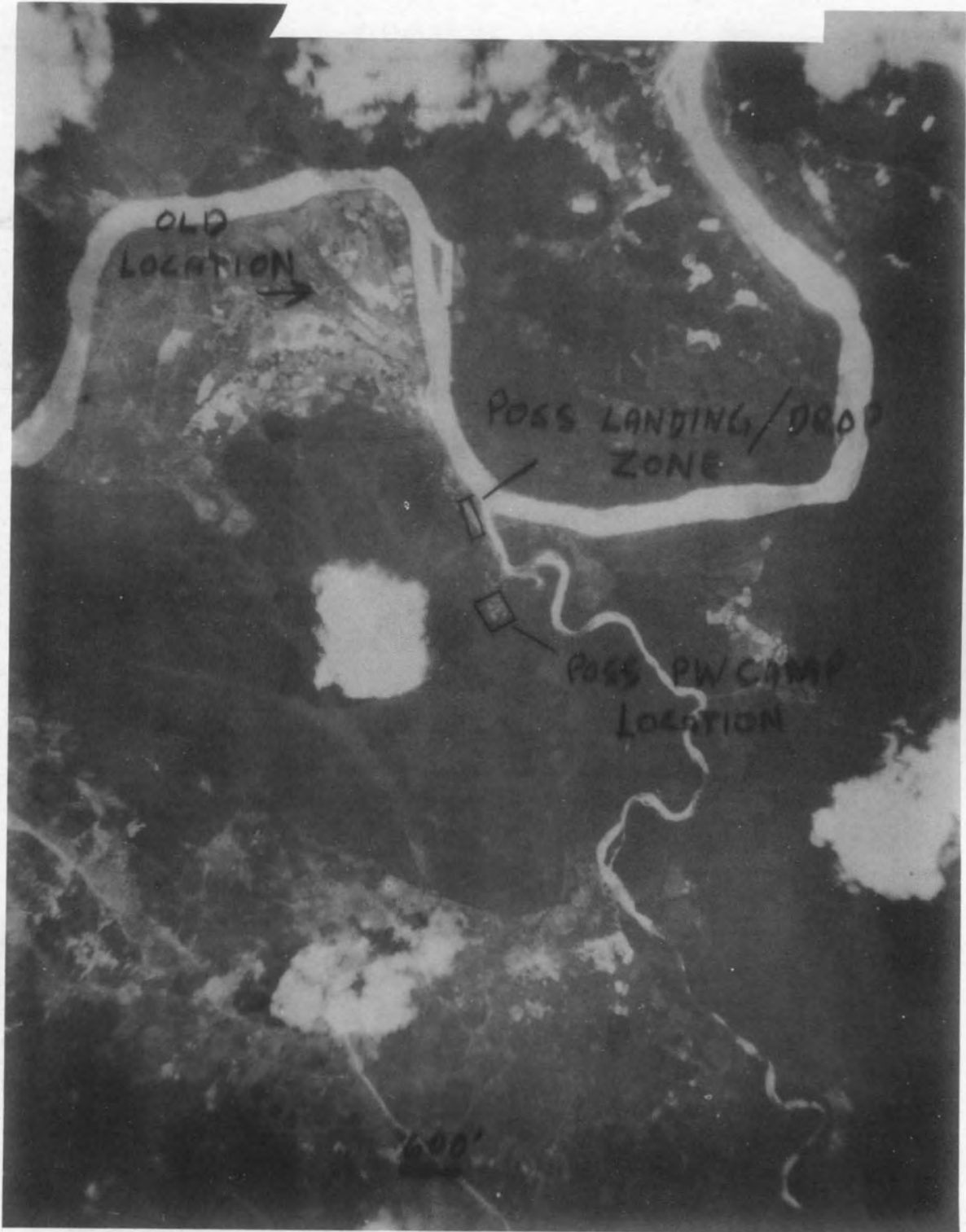
N-64 #2

2 1587



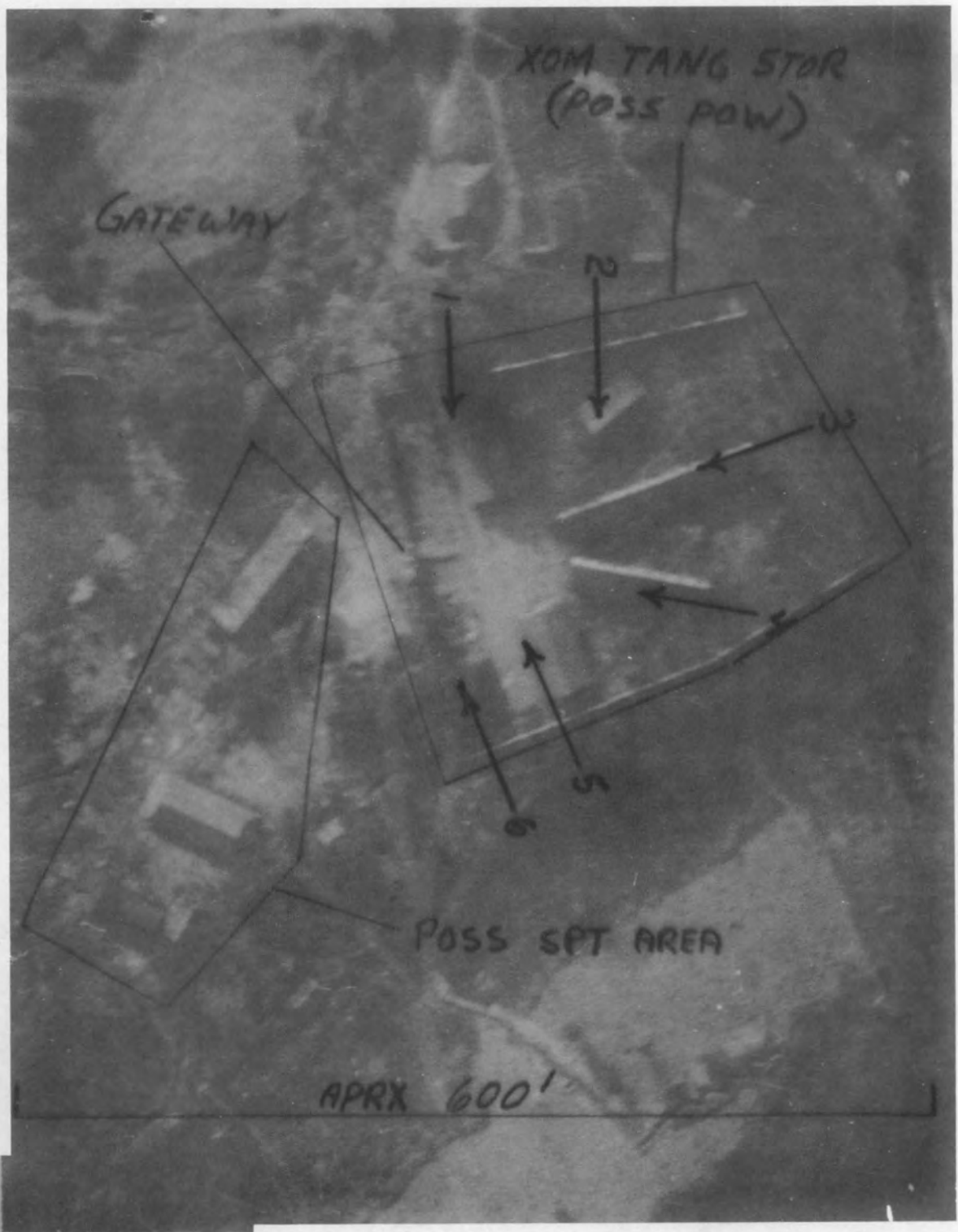
13 157

13 158



N-64 #3

2 1588



17
159

N65 #1

2 1589

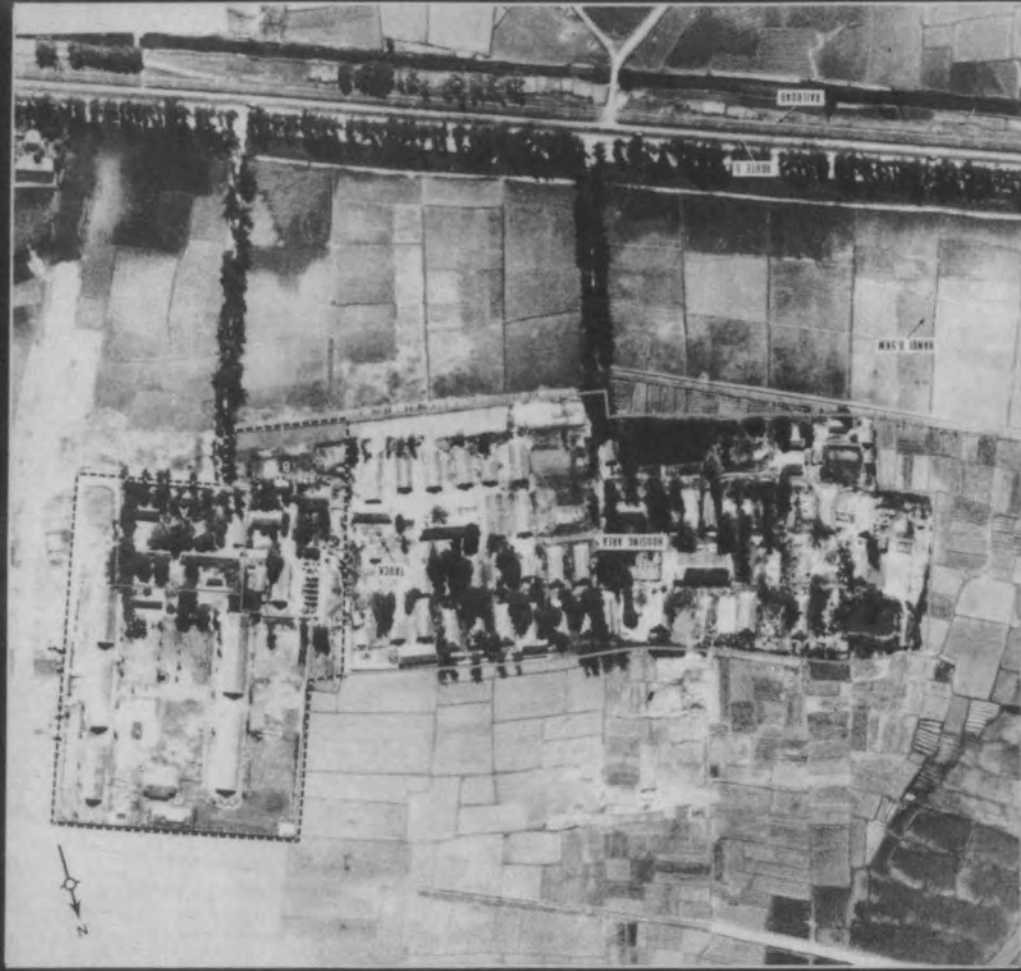


13 160

2 1590

N65 #2

13 159



2 1592

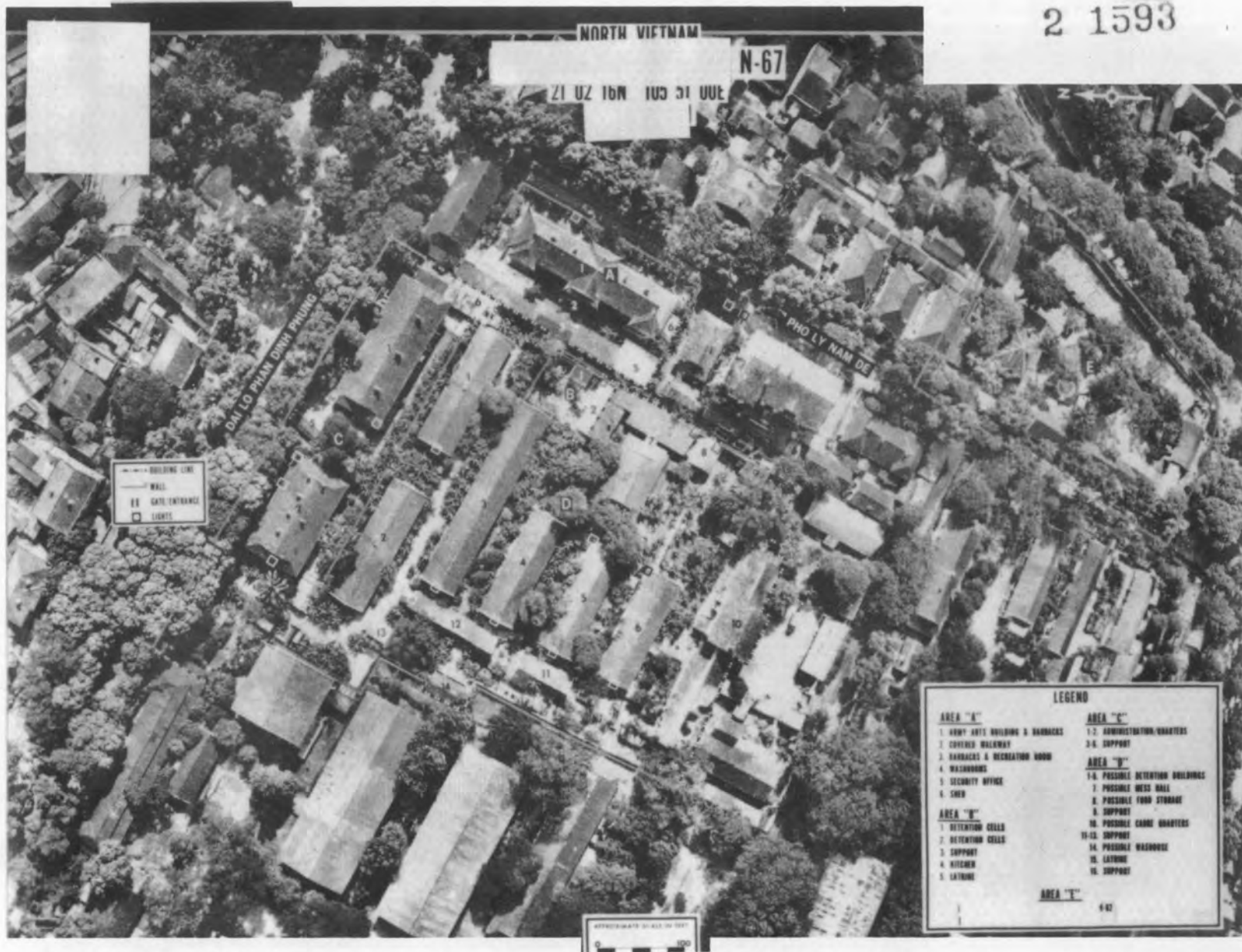
PW CAMP N-66

21 02 02N 105 54 48E

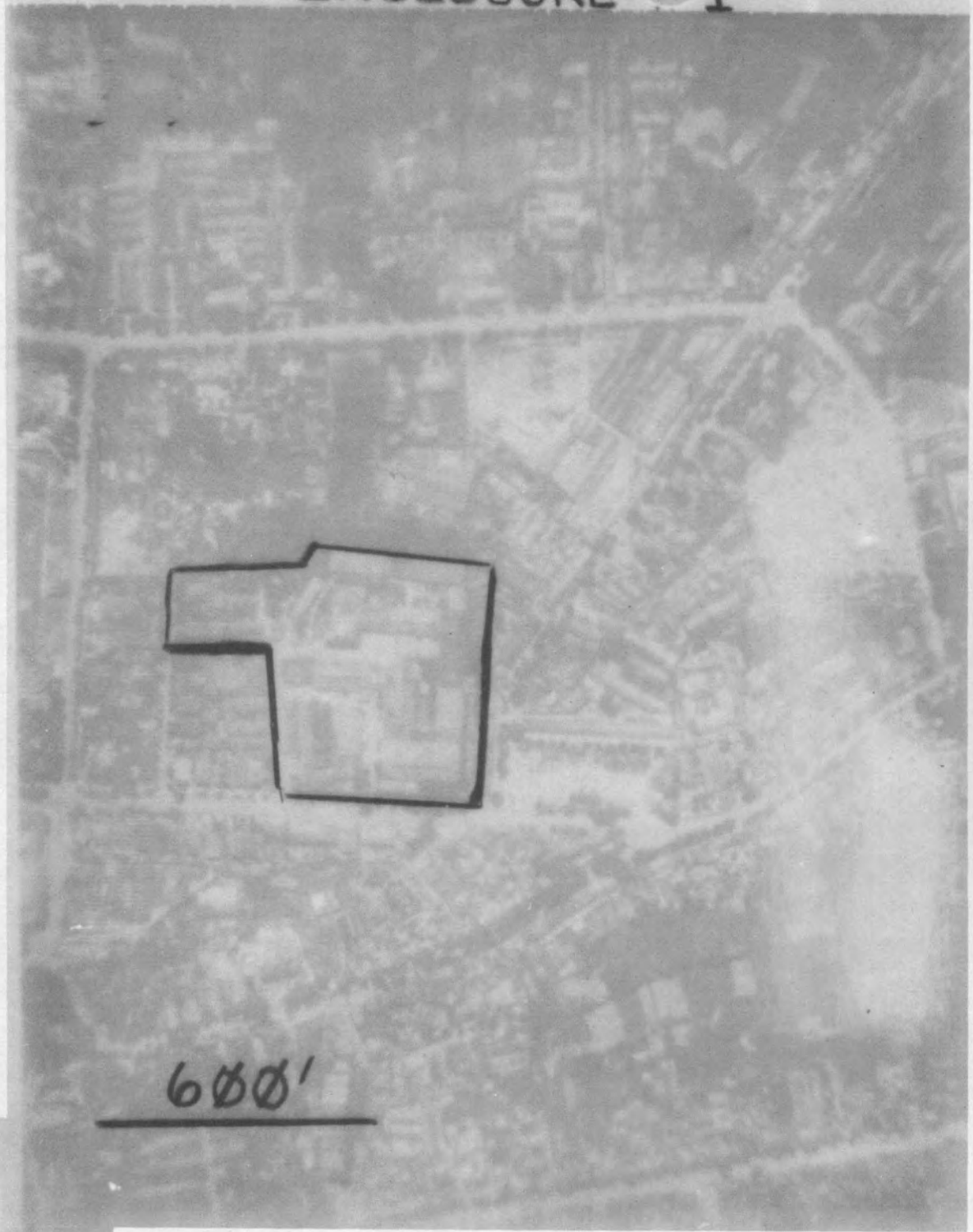
NORTH VIETNAM

13163

2 1593



INCLOSURE ○ 1



600'

13 154

N-68

2 1594

13 165

N68

#2

2 1595



INCLOSURE # 2



13166

300'

N 68 #3

2 1596

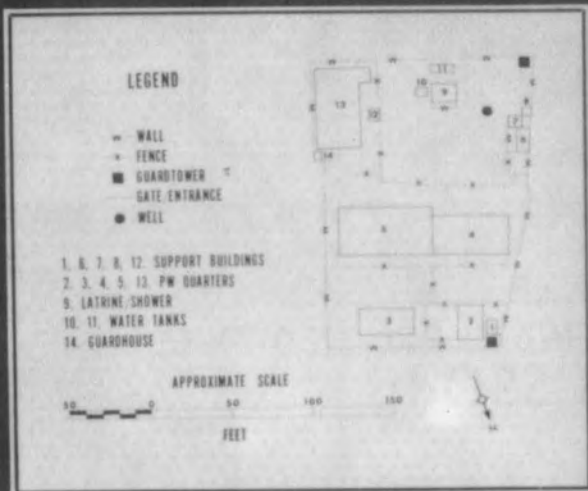
291 ST

NORTH VIETNAM

2 1597

N-69

21 08 36N 105 30 01E



891 81

NORTH VIETNAM

POSS PW CAMP

21 47 02N 105 13 25E

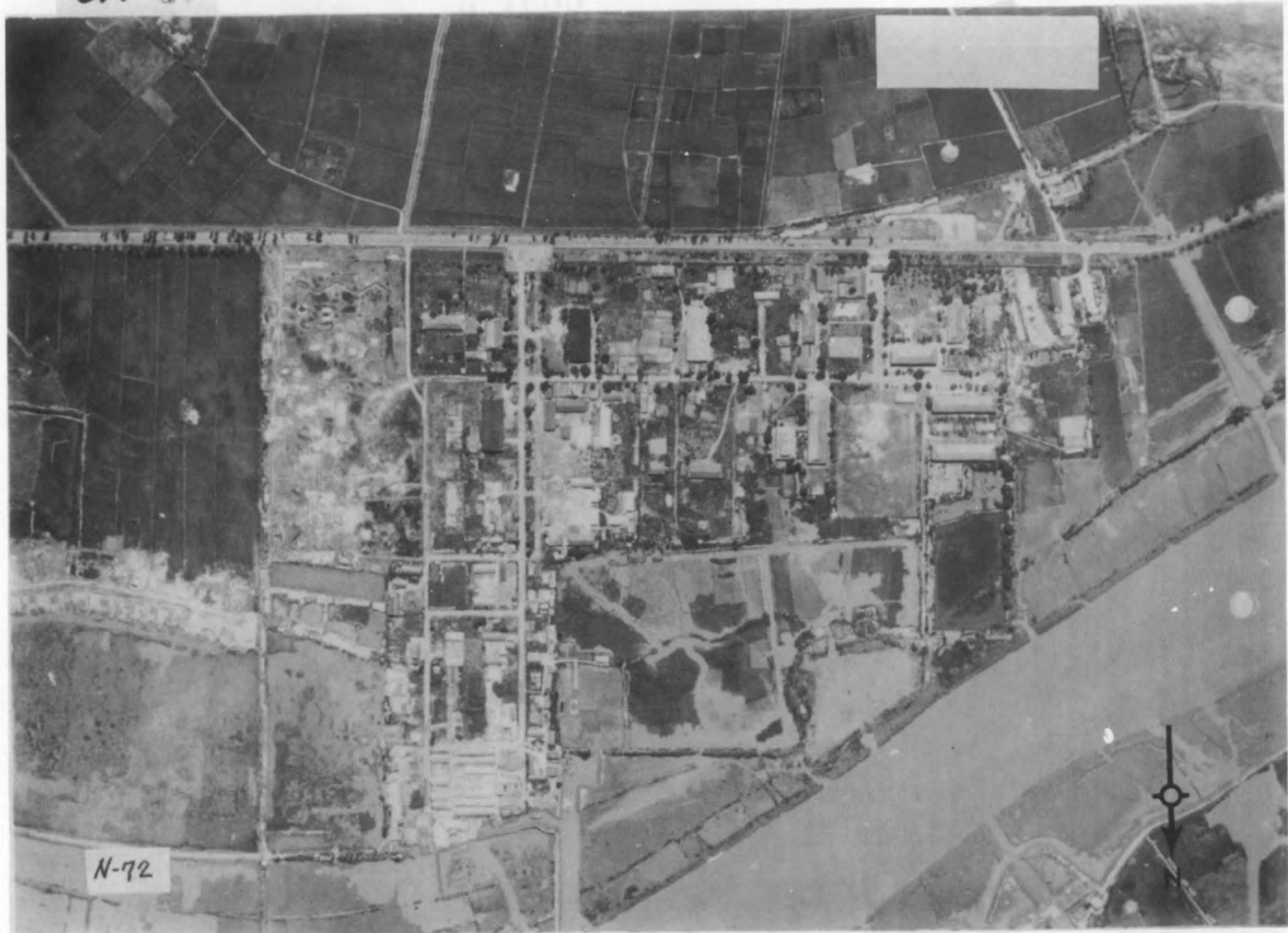


- LEGEND:
- 1. RUBBER PROCESSING COMPOUND
 - 2. PROBABLE BARRACKS
 - 3. WATER RESERVOIR
 - 4. PROBABLE ADMIN AREA
 - 5. WORKERS HOUSING
 - 6. ANIMAL PENS
 - 7. WORKERS HOUSING AREA
 - 8. CHECK POINT
 - 9. THATCH-ROOFED HOUSES
 - 10. PROBABLE STORAGE BUILDINGS



2 1598

691 CT



N-72

2 1599



XJ 782072

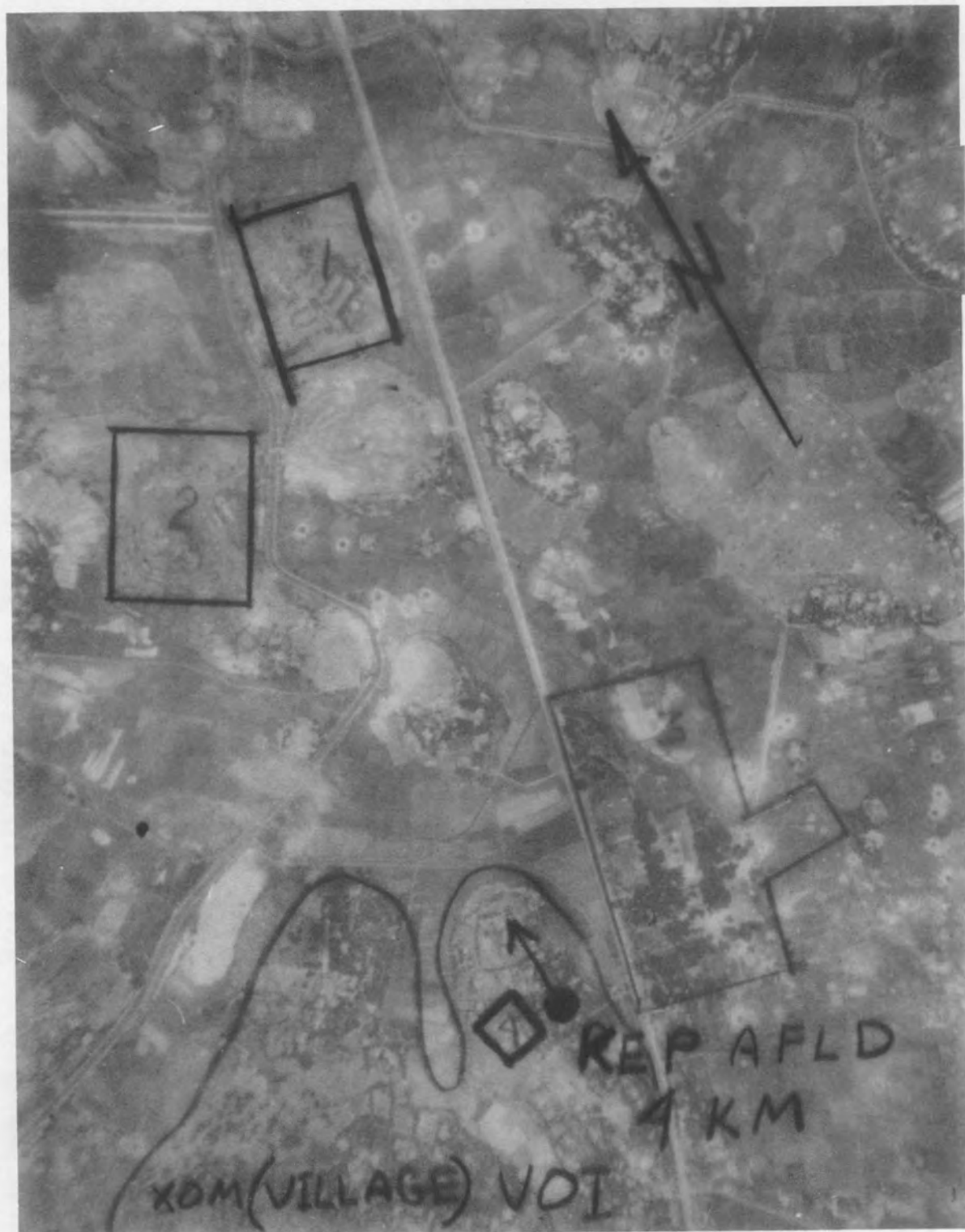
N-72

I

XJ 782069

#2

2 1600



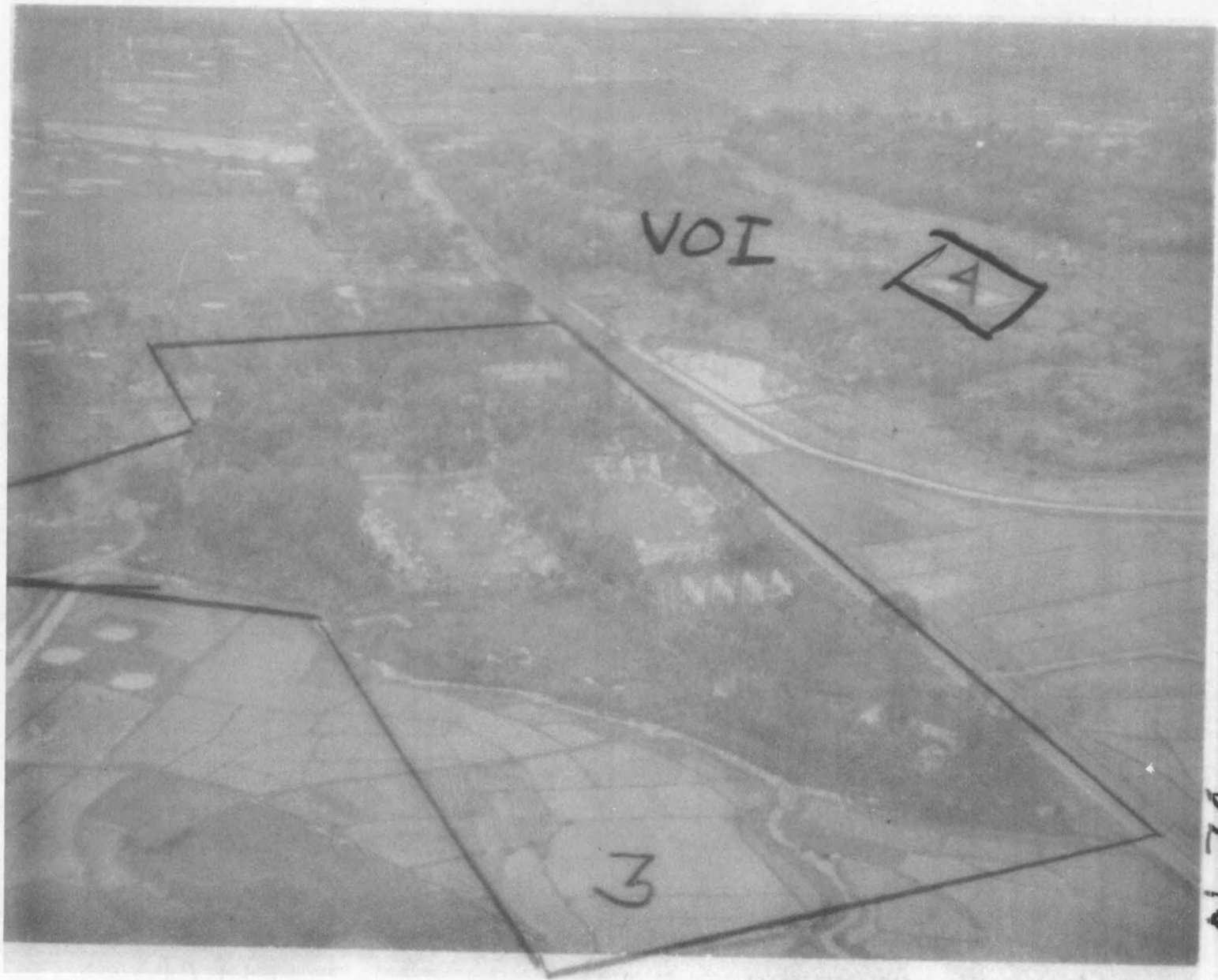
13171

N 74 #1

2 1601

13 172

2 1602



N 74

2 1602

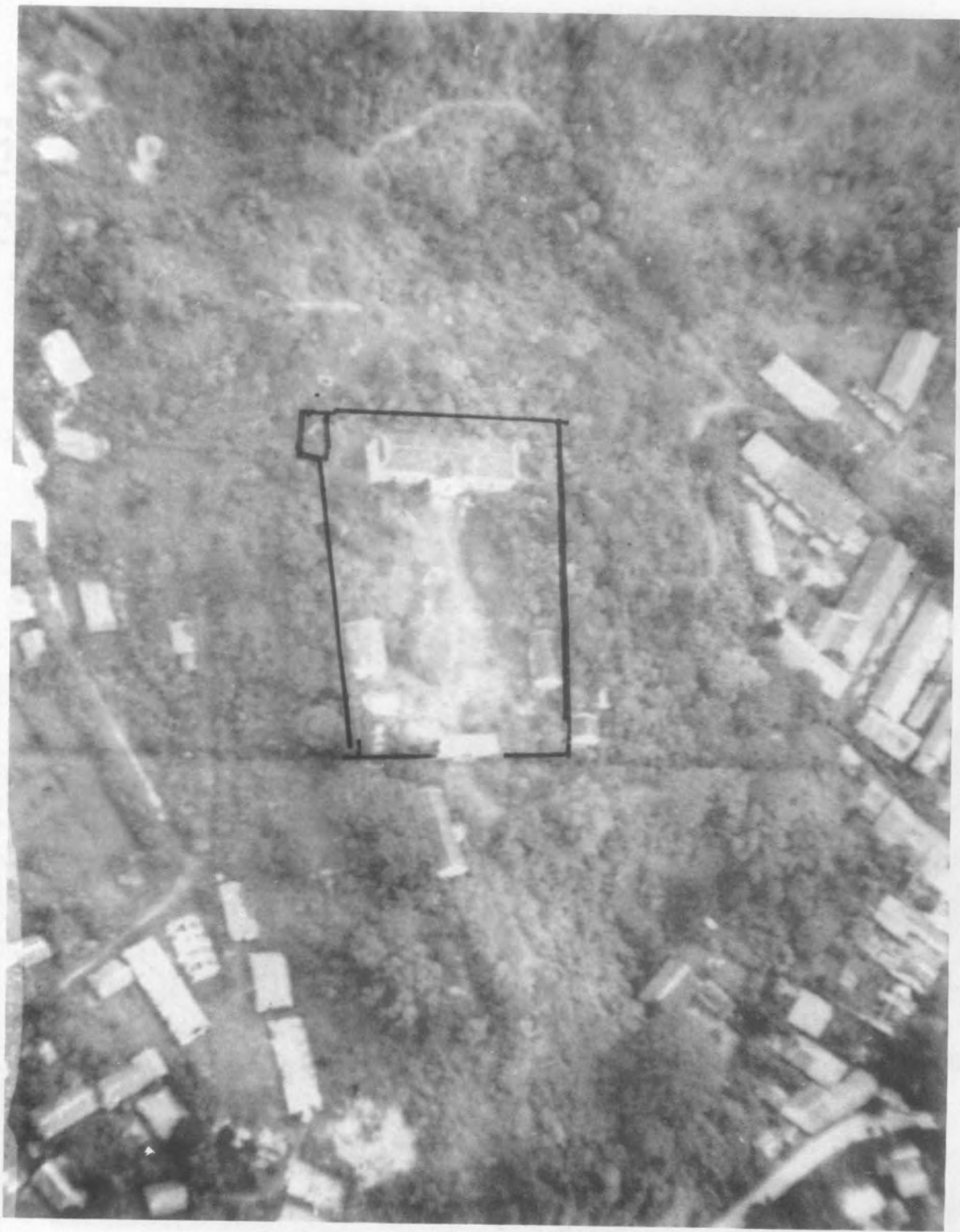


13 173

N 74

2 1603

6L-N



13 174

N-79

2 1604

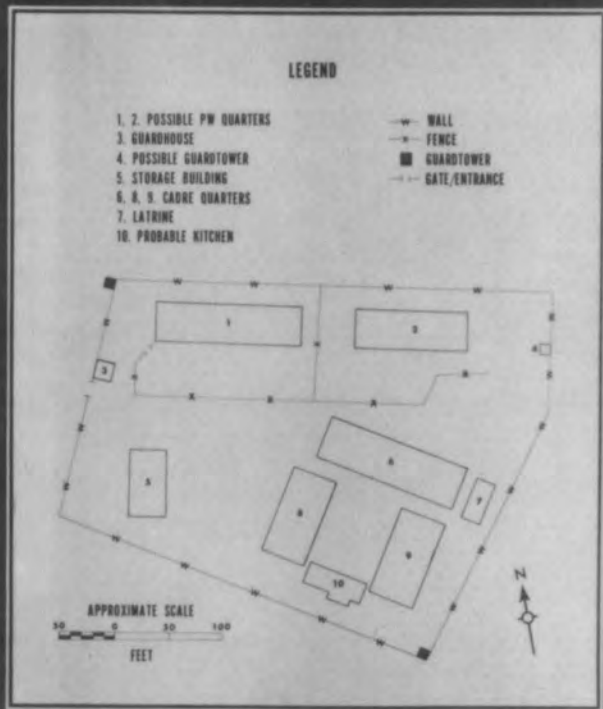
13175

2 1605

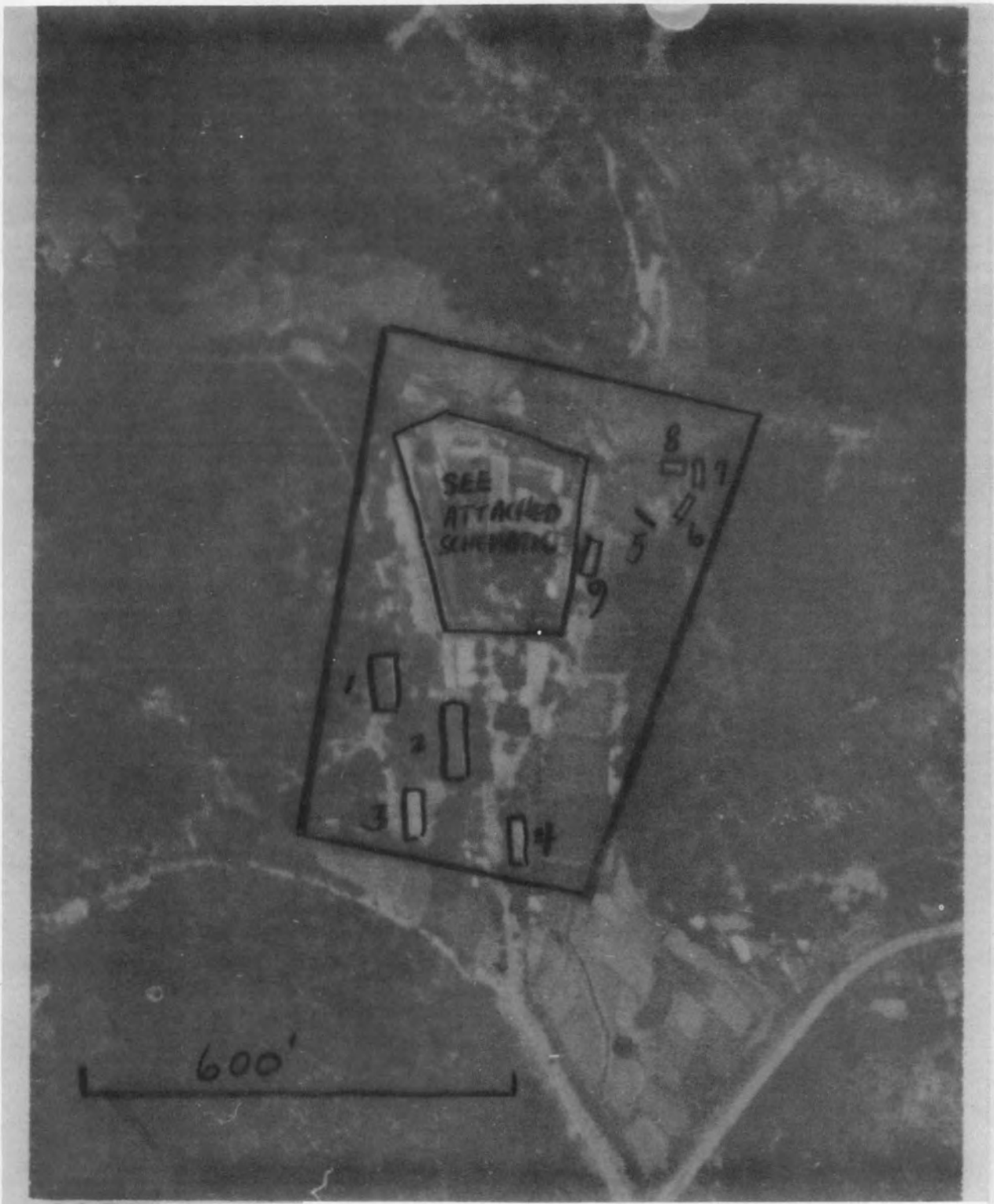
NORTH VIETNAM

PW CAMP, N-80

22 29 58N 103 58 49E



13 176



N80

2 1606

AREA 3



N81

2 1607

13 177



13 178

N81 #2

2 1608

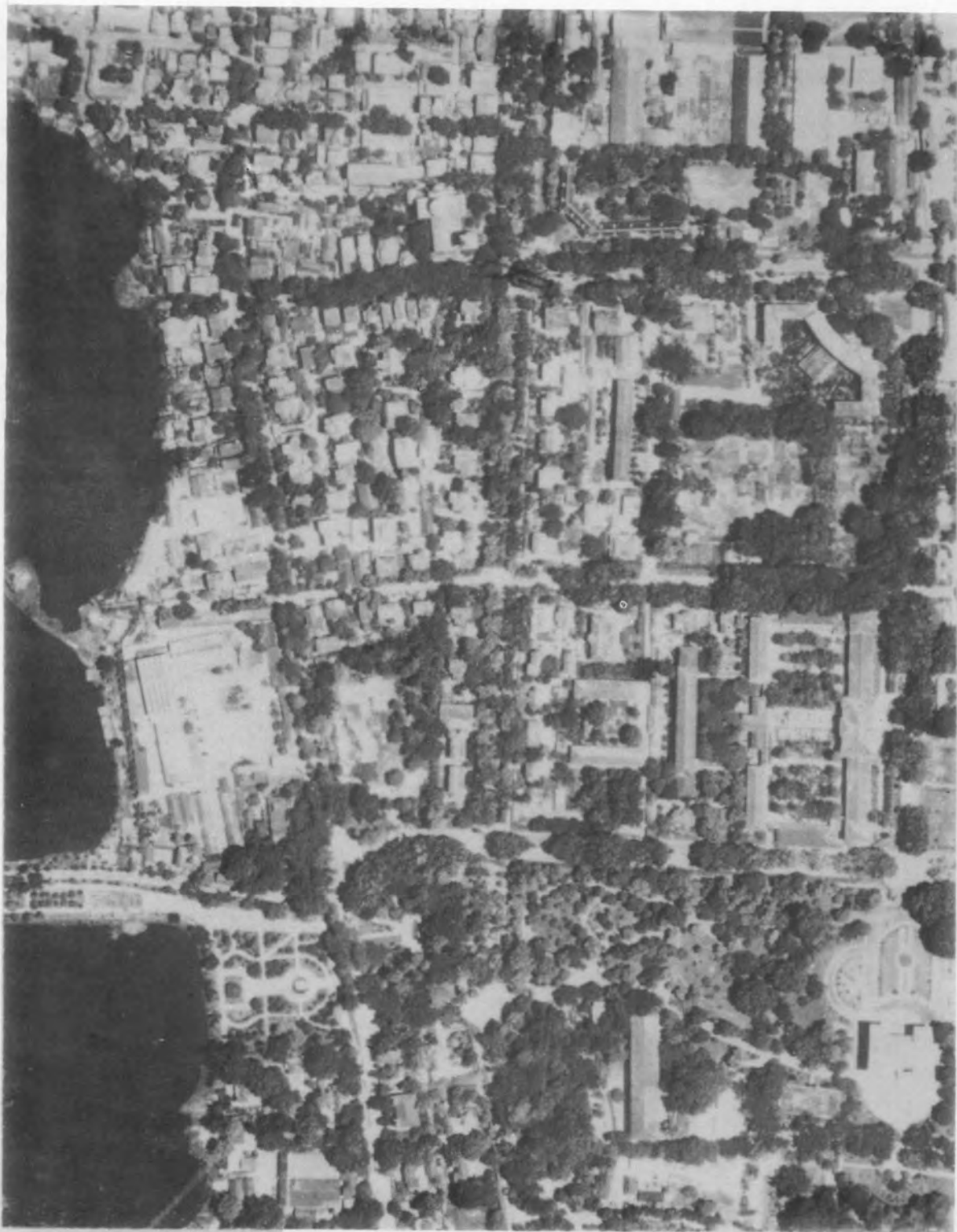


B179

N81 #3

2 1609

|ENLGMNT| NORTH



13 180

N81 #4

2 1610

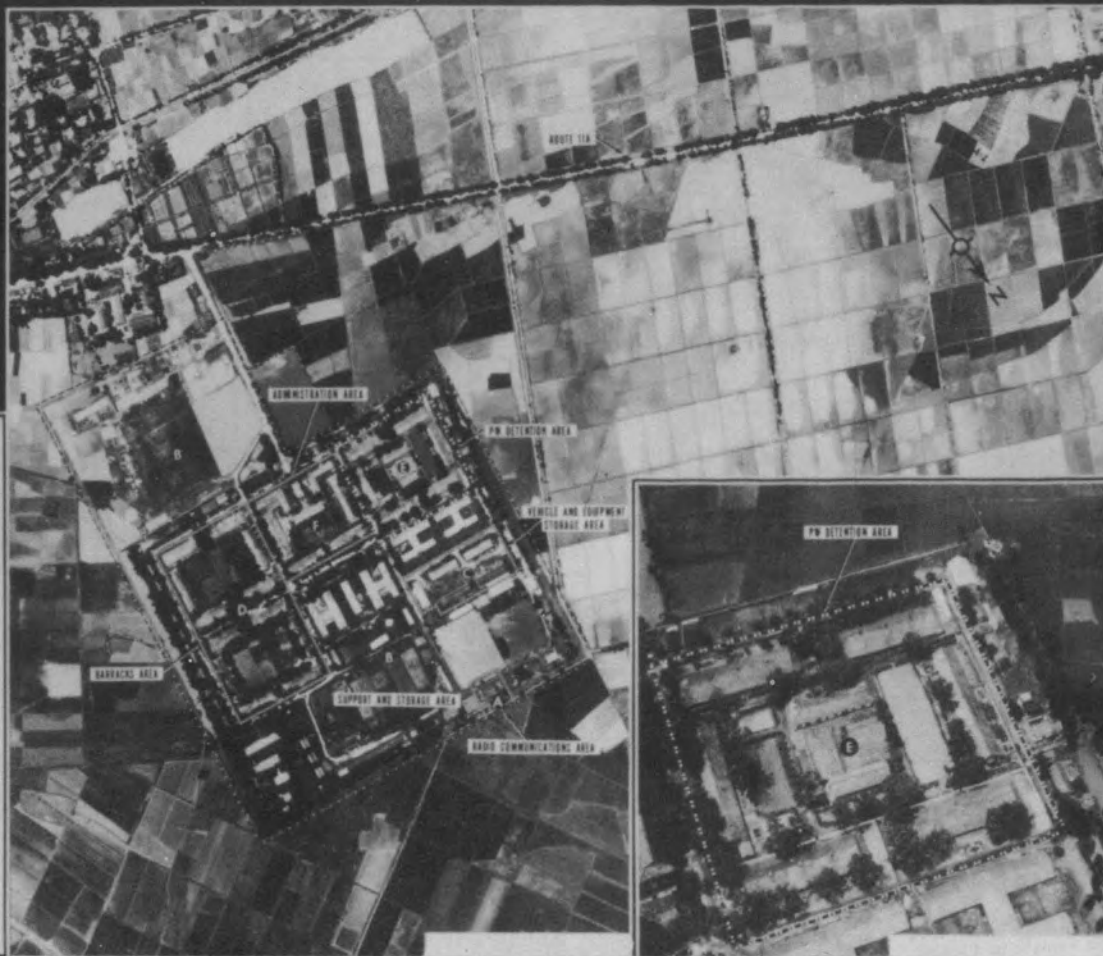
181 81

NORTH VIETNAM

2 1611

N-84

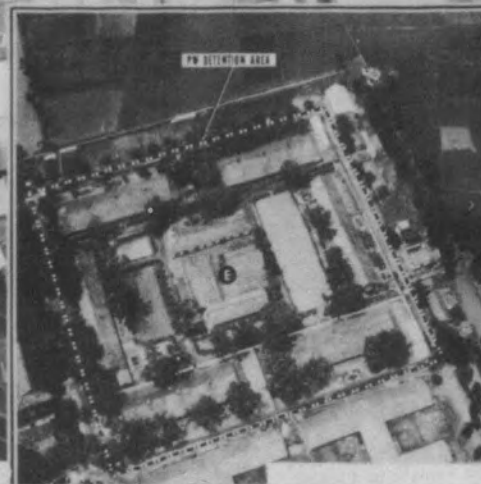
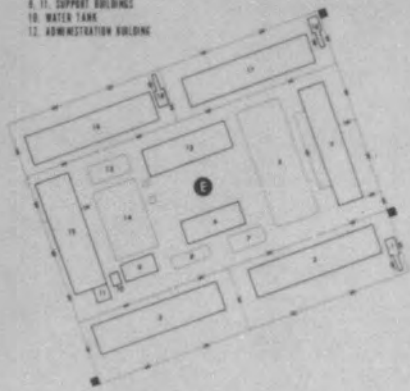
210401N 1054323E



PW DETENTION AREA LEGEND

- 1, 16, 18, LATRINES
- 2, 3, 17, 19, CELLBLOCKS
- 4, 15, POSSIBLE QUARTERS
- 5, 7, 8, 10, 14, PONDS
- 6, STORAGE BUILDING
- 9, 11, SUPPORT BUILDINGS
- 10, WATER TANK
- 12, ADMINISTRATION BUILDING

- WALL
- GUARDTOWER
- GATE ENTRANCE
- EARTH COVERED BOMB SHELTER



13182

NORTH VIETNAM

2 1612

CAMP N-85

20 15 48N 105 21 57E



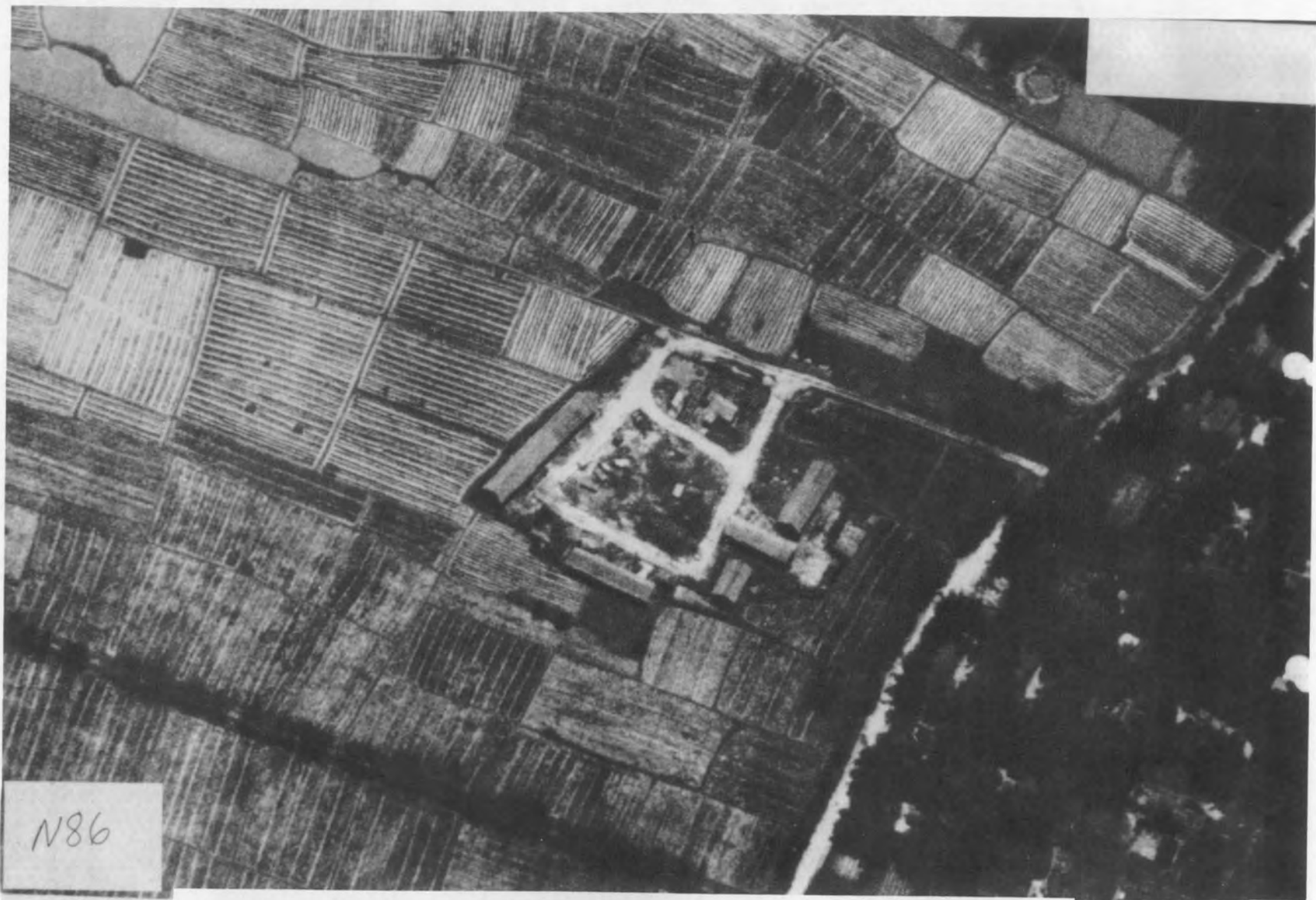


N86

#3

2 1615

15 165

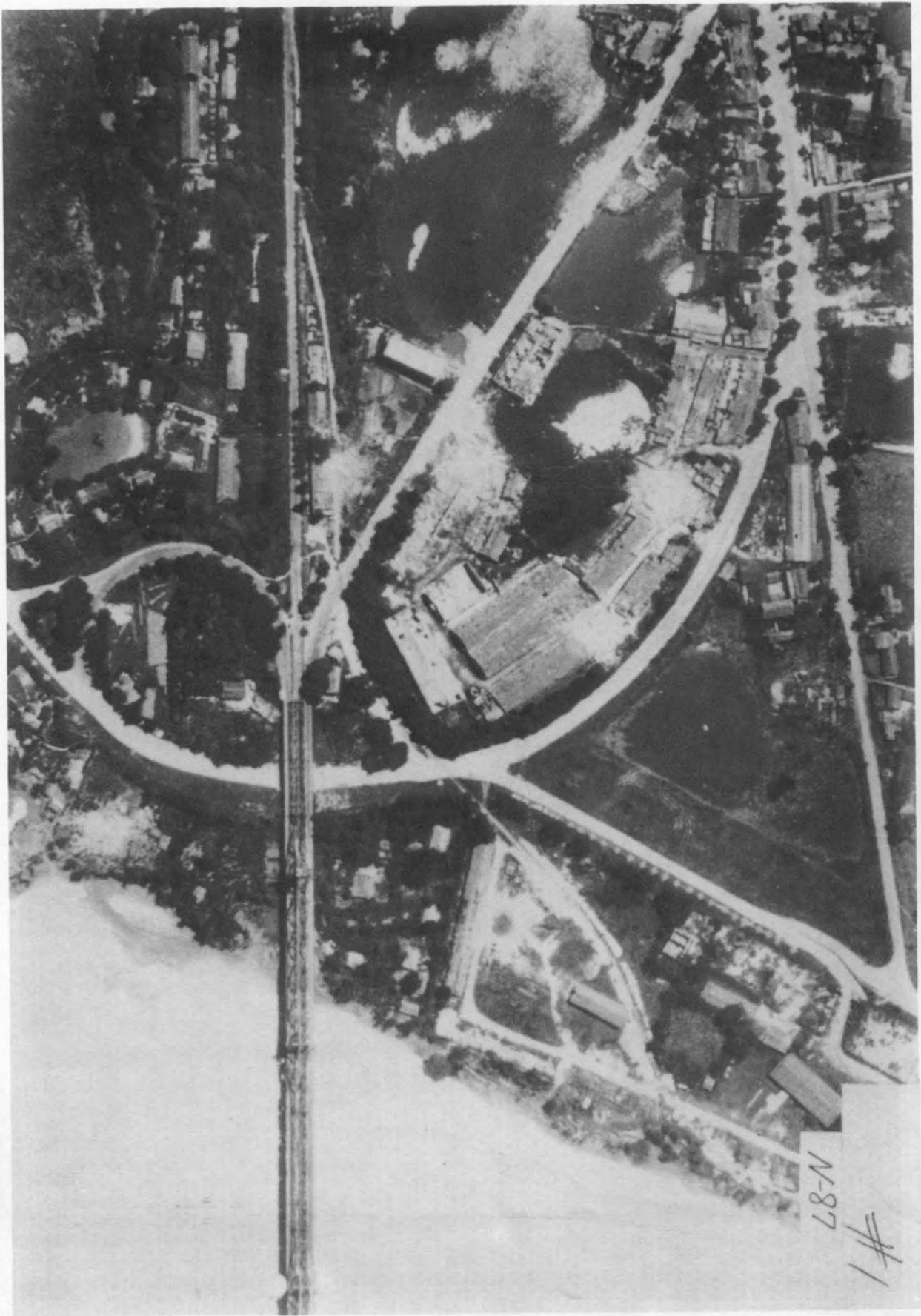


N86

#4

2 1616

13 186



13 187

N-87

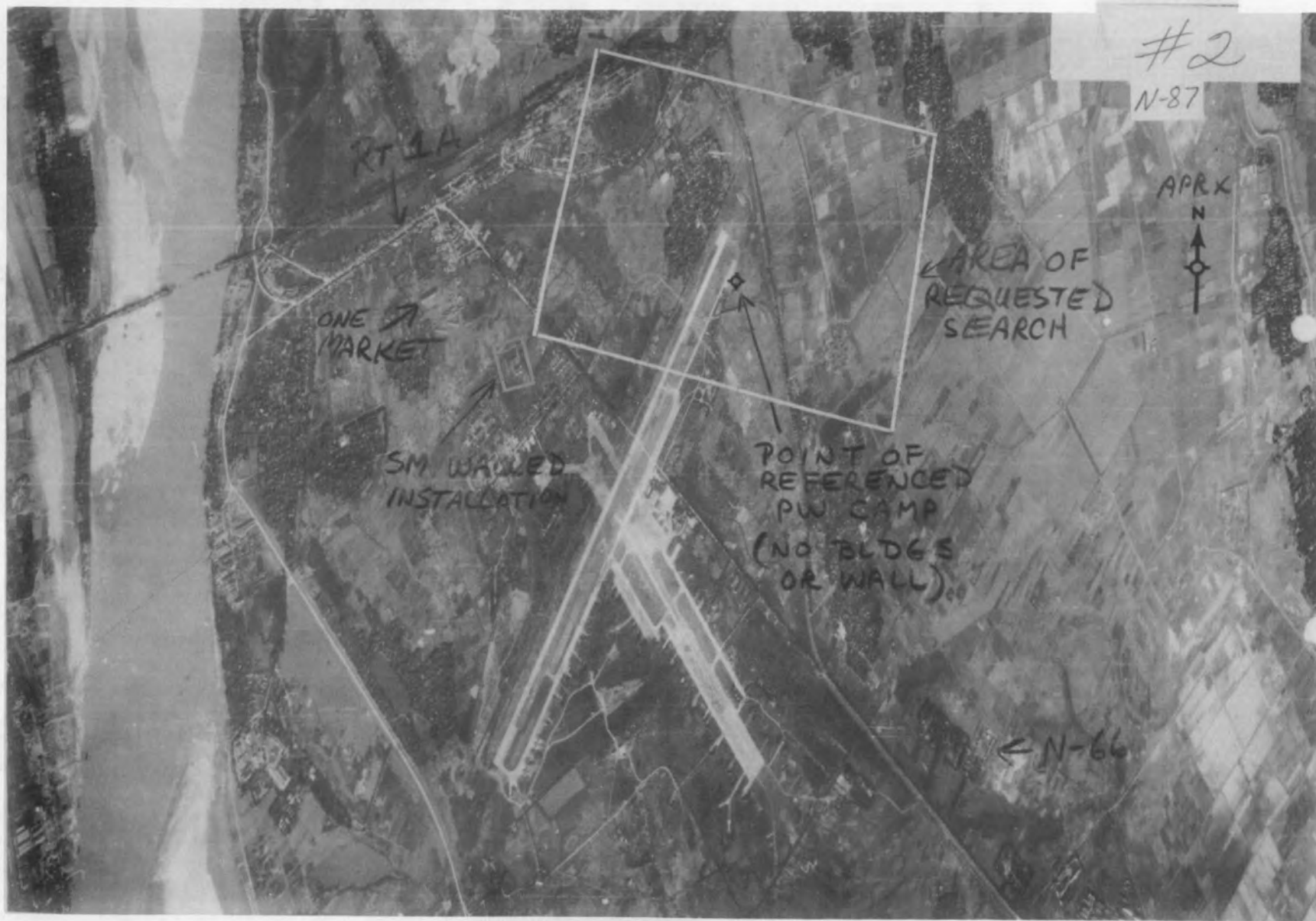
#1

2 1617

2 1618

#2

N-87



13 188