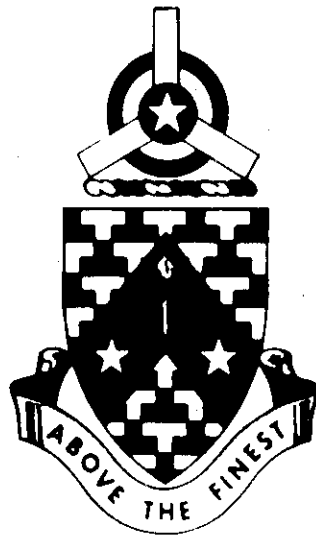


PROGRAMED TEXT

**ORGANIZATION OF THE ARMY
PART II
THE TYPE FIELD ARMY**



JANUARY 1968

**UNITED STATES ARMY
PRIMARY HELICOPTER SCHOOL
FORT WOLTERS, TEXAS**

PROGRAMED TEXT

PROGRAM TEXT

FILE NO:

PROGRAM TITLE

Organization of the Army
Part II
The Type Field Army

POI SCOPE: Present to the student the type field army; its units having organic aviation, the organizational chart and chain of command.

INSTRUCTOR REFERENCES:

Common Subjects and Reference Data for Army Aviation in the Field Army, (USAAVNS, Fort Rucker, Alabama, 1968)

PREPARED BY:

DATE:

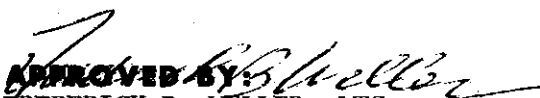
TFPL

January 1968

REVISED BY:

DATE:

APPROVED BY:


FREDERICK B. WELLER, LTC
Chief, TP&A

DATE:

May 1968

TABLE OF CONTENTS

PROGRAMED TEXT
FILE NO:

PROGRAM TITLE:
Organization of the Army
Part II

CONTENTS	PAGE NUMBER
1. PREFACE _____	iii
2. PERFORMANCE OBJECTIVES _____	1
3. PROGRAM _____	2
a. _____	
b. _____	
c. _____	
d. _____	
e. _____	
4. SELF EVALUATION EXERCISE _____	15
5. ANSWERS TO SELF EVALUATION EXERCISE _____	17
6. ITEMS TO BE ISSUED WITH PROGRAM <u>Organization of the Army Handout</u>	18
7. _____	
8. _____	
9. _____	
10. _____	

PREFACE

This self-teaching course in Army organization is designed to acquaint you with the chain of command from the President, as Commander-in-Chief, down through division organization.

The instructional material in this text is part II of a five part course. You will receive each part in the proper sequence, and will be able to develop the organization starting from the top levels. The five parts are as follows:

- Part I. National Defense Organization.
- Part II. The Type Field Army.
- Part III. The Type Corps.
- Part IV. The Divisions.
- Part V. The Airmobile Division.

ORGANIZATION OF TEXT

This text consists of frames, panels, and a self evaluation exercise. A frame presents a teaching point which usually requires an answer to a specific problem. A panel is an illustration or other information needed to solve the problems. The self evaluation exercise is designed to allow you to test yourself on the material learned in the text.

The problems in some frames require you to write an answer. In others, you select a correct choice. Still other problems have more than one correct choice. A few frames are information frames and do not need an answer.

HOW TO WORK THE TEXT

1. Start with frame 1 of Part II. Answer it correctly by marking the correct choice in pencil.
2. Turn the page. The correct answer to frame 1 is printed above frame 2. If your choice was incorrect, turn back to frame 1 to re-study the frame and change your answer to the correct one.
3. Answer frame 2 as required and continue on through the program.

SELF EVALUATION EXERCISE

When you have finished all the frames, turn to the self evaluation exercise located at the end of the text. Work all of the problems then compare your answers with the answer sheet provided. To receive the full benefit of this exercise do not read the answers before answering all questions. Should you not be able to answer a problem, turn back to the text and study the part pertaining to that question.

PERFORMANCE OBJECTIVES

Upon completion of this program you will be able to:

- ✓1. Recognize the units in the type field army having aviation capabilities.
2. Locate the assignments a Warrant Officer aviator may have at field army level.
3. Read and interpret organizational charts.
4. Trace chain of command from a given position.
5. Determine the location of field army in the Army organization.

ORGANIZATION OF THE ARMY

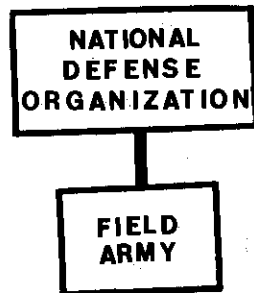
Part II

Frame 1.

In the last program you saw the Army organization at its highest echelon. Now, continuing down the scale you will see the type field army. Keep in mind that units are organized to "fill" a need. The organization of any specific unit will depend upon the needs of that particular unit to "fulfill" its mission.

Organization of any unit is based upon (Circle your answer).

- a. past experience
- b. need
- ☒ c. need to accomplish a mission



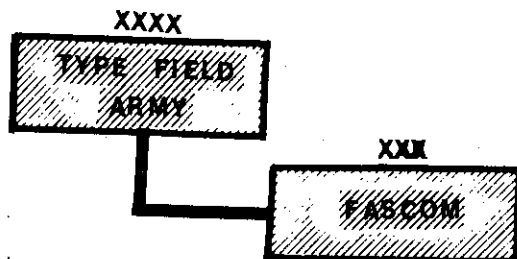
TURN TO FRAME 2 PAGE 4

Frame 7.

Answer: c., Army aviation company, a.

Frame 8.

INFORMATION FRAME



FASCOM stands for field army support command. It is a corps size unit and has the important job of supplying the field army with logistical support. (medical, MP, maintenance, supply, transportation.)

FASCOM has aviation to use as medical evacuation and resupply for the field army.

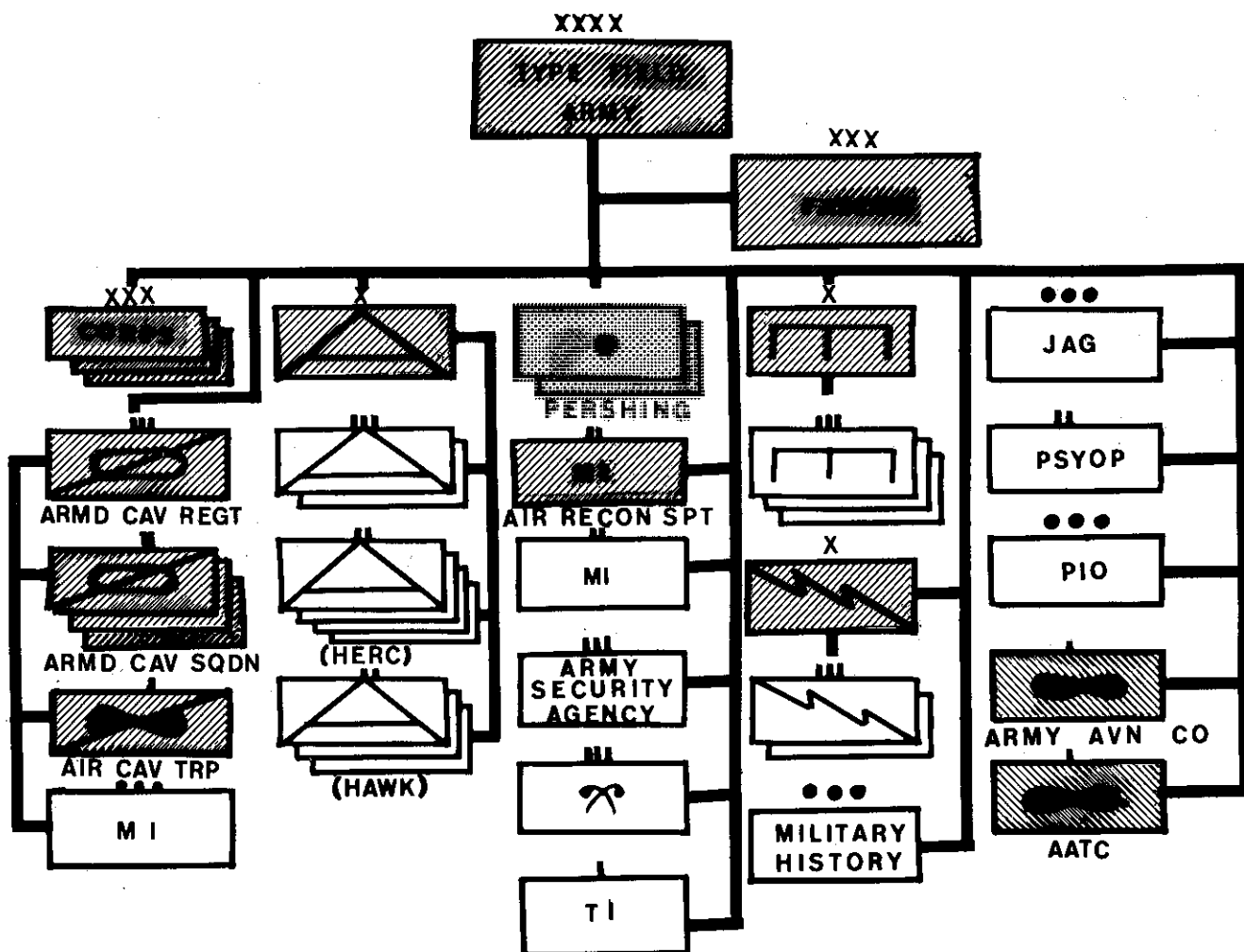
TURN TO FRAME 9 PAGE 5

Frame 1.
 Answer: c. need to accomplish mission

Frame 2.

Look closely at the organizational chart on the bottom of the page.
 The shaded areas show units with organic aviation in the field army.

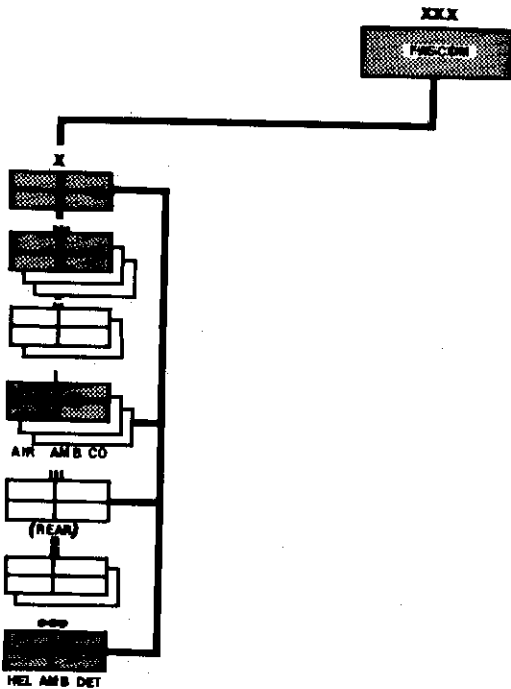
How many corps are located in the type field army 3.



SHADED UNITS DENOTE
 ORGANIC ARMY AIRCRAFT

Frame 9.

A medical brigade in FASCOM is responsible for the field army medical support.



The medical brigade has three air ambulance companies and a helicopter ambulance detachment for aeromedical evacuation of patients organic to it. The commander of the helicopter ambulance detachment is responsible to the: (Circle your answer)

- a. Air ambulance company commander.
- ☒ b. Medical brigade commander.
- c. FASCOM commander.

Select the true statement.

- 1. The air ambulance company is responsible for medical evacuation of the support command only.
- ☒ 2. The air ambulance company is responsible for medical evacuation support to all elements of the field army.

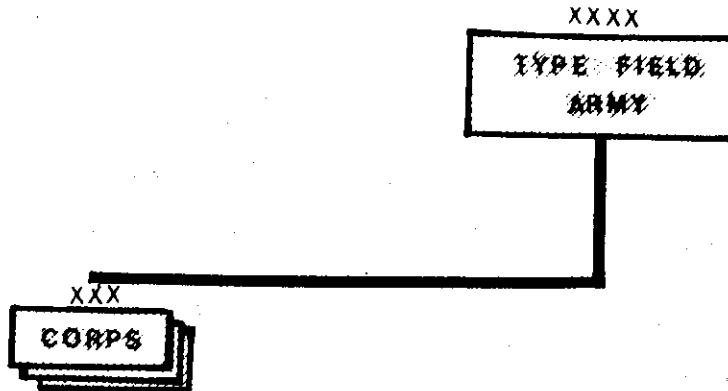
Frame 2.

Answer: 3

Frame 3.

There are 3 corps in the type field army. The corps is the next lower unit in the army organization. Notice the four "X's" above the field army. They are the symbol for field army. Three is the symbol for corps. A general (four star general) normally commands the field army. What rank officer would you expect to command a corps?

- a. Brigadier General (1 star)
- b. Colonel (eagle)
- ☒ c. Lieutenant General (3 star)
- d. Major General (2 star)



USARV (United States Army Vietnam) is the equivalent of a field army. The corps are called "Field Force" to avoid confusion with the Vietnamese corps. Who is the field force commander in Vietnam responsible to? Commanding General

Select the statement that best completes the sentence.

The corps is:

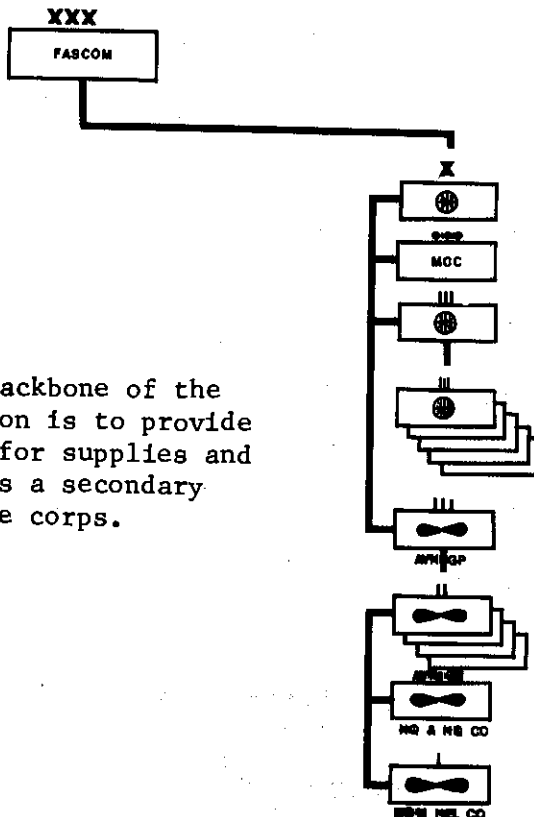
- a. combat service support unit.
- ☒ b. maneuver element for the army.

Frame 9.

Answer: b., 2.

Frame 10.

An aviation group is located in the FASCOM transportation brigade. It is made up of aviation battalions, which have medium and large helicopter companies attached to perform specific missions.



This aviation group is the backbone of the FASCOM supply system. Its mission is to provide logistical and tactical airlift for supplies and troops. Its aircraft also serves a secondary mission of backup support for the corps.

Which of the following is the organization for the aviation group located in FASCOM?

A.

B.

1 aviation battalion.

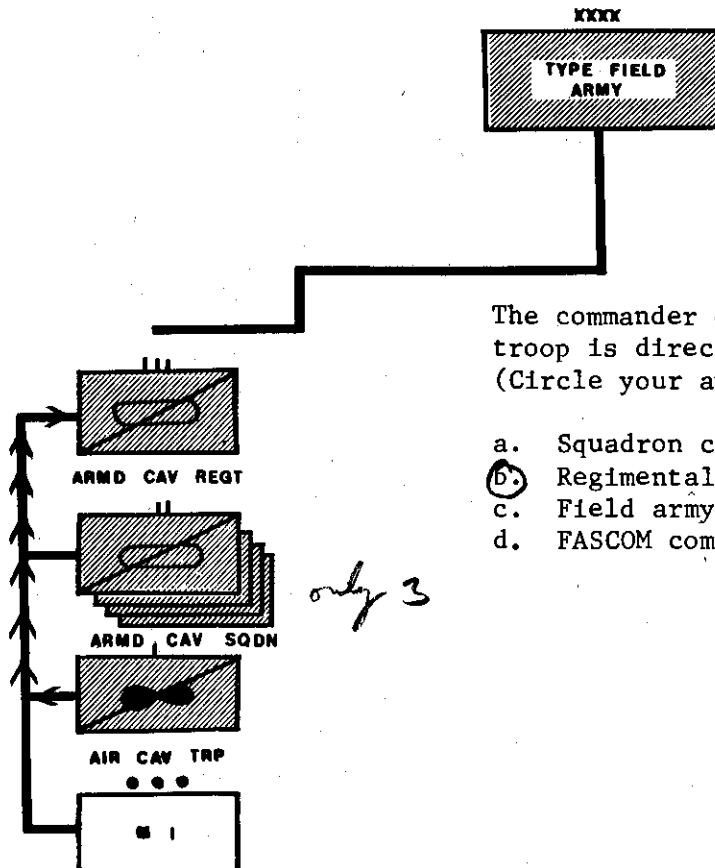
4 aviation battalions.

Frame 3.

Answers: c.; Commanding General, USARV; b.

Frame 4.

One armored cavalry regiment is in the field army. It is composed of three armored cavalry squadrons, one air cavalry troop and one intelligence detachment.



The commander of the air cavalry troop is directly responsible to:
(Circle your answer).

- a. Squadron commander.
- ☒ b. Regimental commander.
- c. Field army commander.
- d. FASCOM commander.

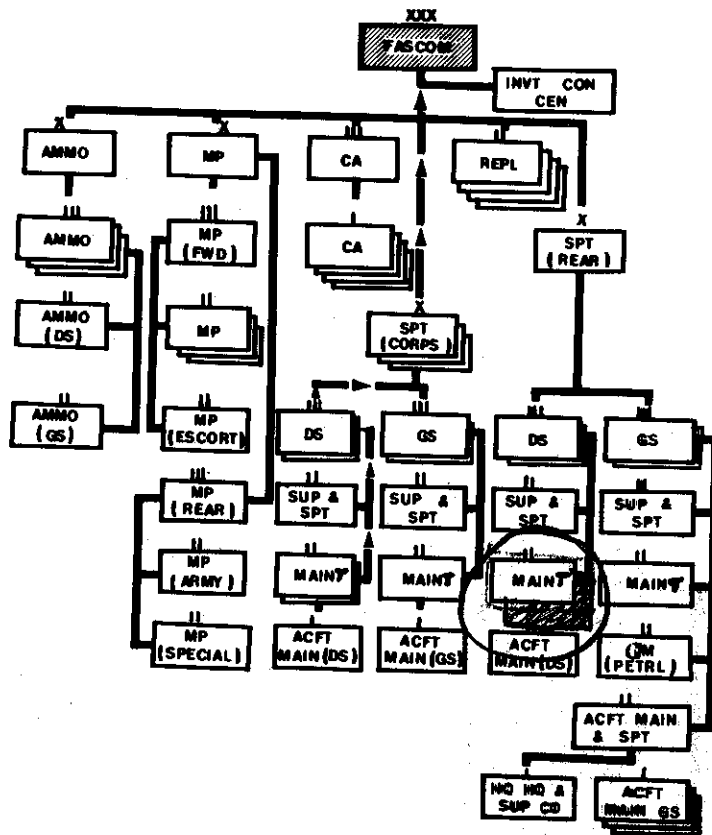
The armored cavalry regiment is the only unit designed to close with and destroy the enemy in the field army. It has the mission of defending and patrolling the field army headquarters area and assisting the other units when necessary.

TRUE or FALSE

When an armored cavalry squadron is engaged in combat the field army commander will direct the operations *false*

Frame 10.
 Answer: B.

Frame 11.



FASCOM is also supplied with general and direct support units that supply the field army with ammunition, MP's, fuel and maintenance.

How many battalion size maintenance units are located in FASCOM?

Select the correct "chain of command" from the maintenance battalion that is circled, to the FASCOM commander. (Circle your answer)

A

Maintenance battalion
 Supply and support battalion
 Direct support group
 Support brigade
 FASCOM commander

B

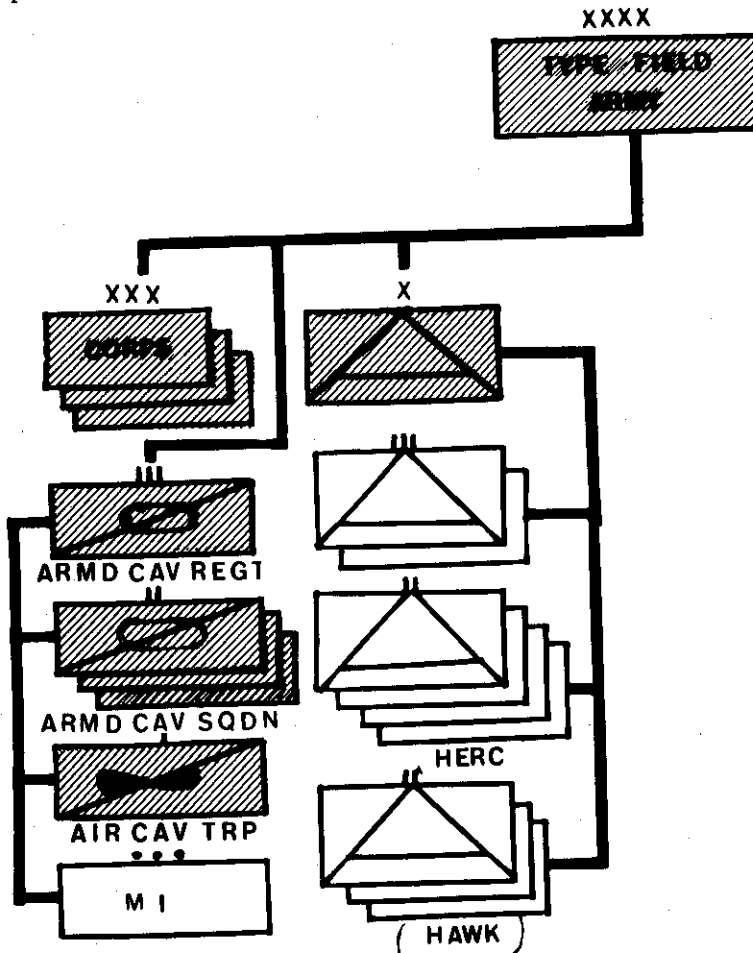
Maintenance battalion
 Direct support group
 Support brigade
 FASCOM commander

Frame 4.

Answers: b., False, the squadron or regimental commander will direct the operations.

Frame 5.

An air defense artillery brigade is found at field army level. It provides the field army with protection from hostile aircraft.



As an aviator assigned to the air defense brigade you could be located only in the brigade headquarters. In the armored cavalry regiment where could you be located?

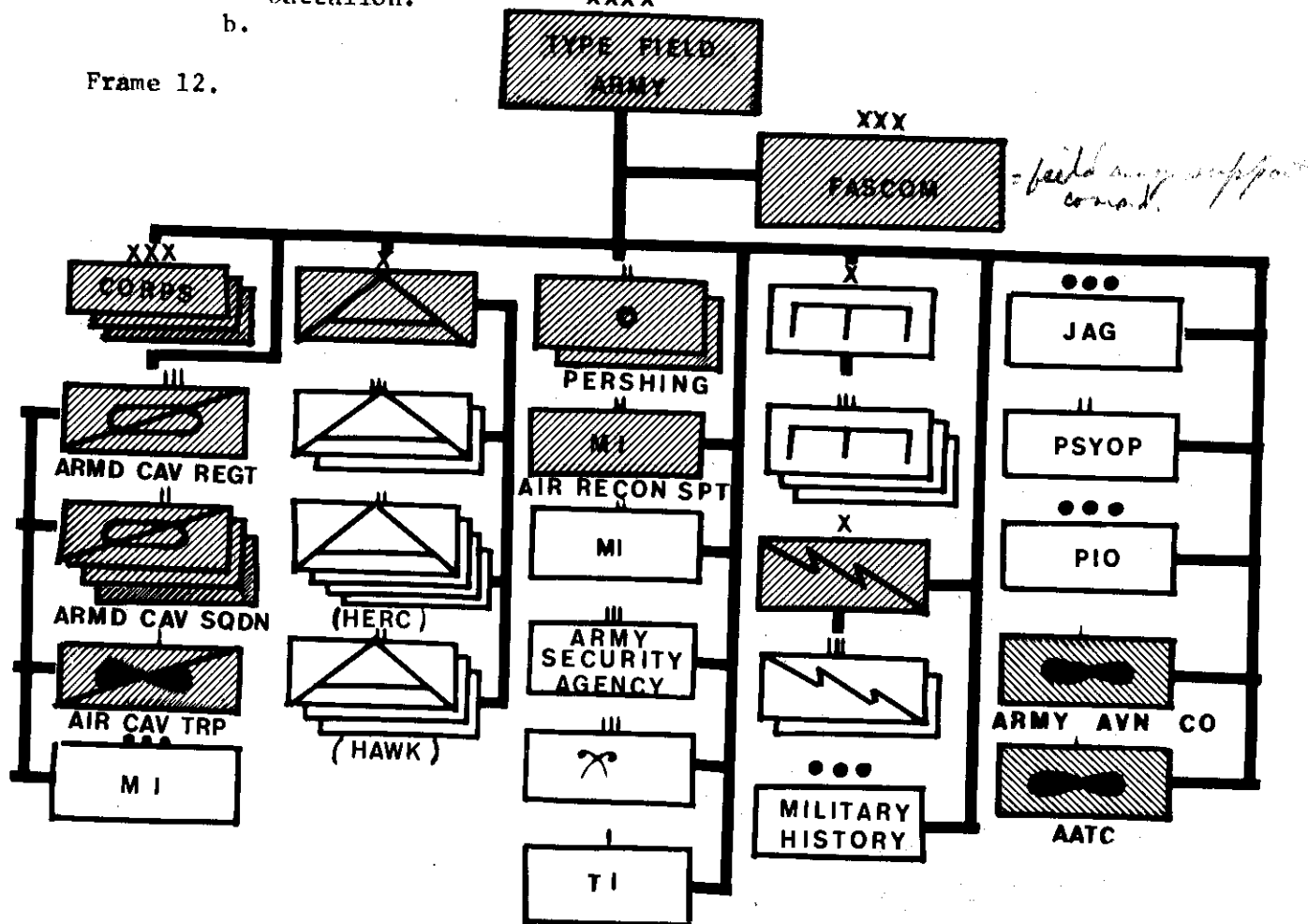
- a. Military intelligence section.
- b. Air cavalry troop only.
- c. Either regiment, squadron or troop.

Frame 11.

Answer: 7, Six maintenance battalions, and one aircraft maintenance and support battalion.

b.

Frame 12.



Here is the organization of the type field army with the army aviation company and aviation air traffic control company shown in the bottom right. Match the missions with unit that is most able to accomplish them.

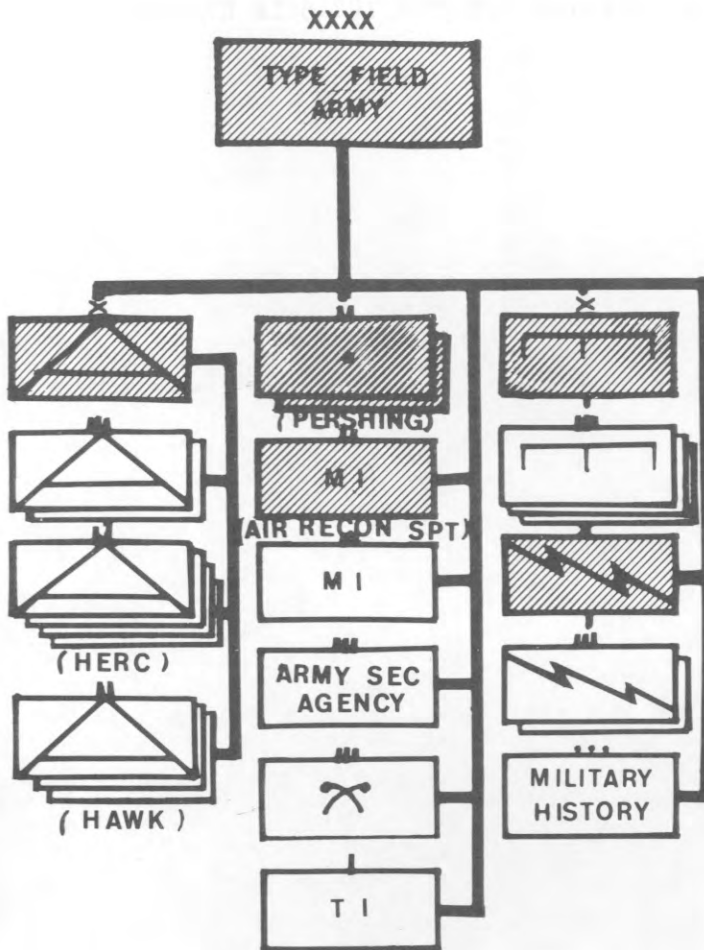
- | | |
|-------------------------------|---------------------------------------------------|
| A1. Corps | A. Next element in organization under field army. |
| H 2. Armored cavalry regiment | B. Perform supply function (Logistics). |
| C 3. Air defense artillery | C. Shoot down enemy observation plane. |
| G 4. Field artillery | D. Responsible for navigational aids. |
| F 5. Engineers | E. Operate an airfield. |
| I 6. Signal | F. Construct a bridge. |
| E 7. Army aviation company | G. Fire nuclear warheads. |
| D 8. AATC | H. Defending field army headquarters from attack. |
| B 9. FASCOM | I. Supply communications. |

Frame 5.

Answer: c. Either regiment, squadron or troop.

Frame 6.

In the diagram below, notice that aircraft are found in the military intelligence air reconnaissance battalion, engineer brigade, and the signal brigade.

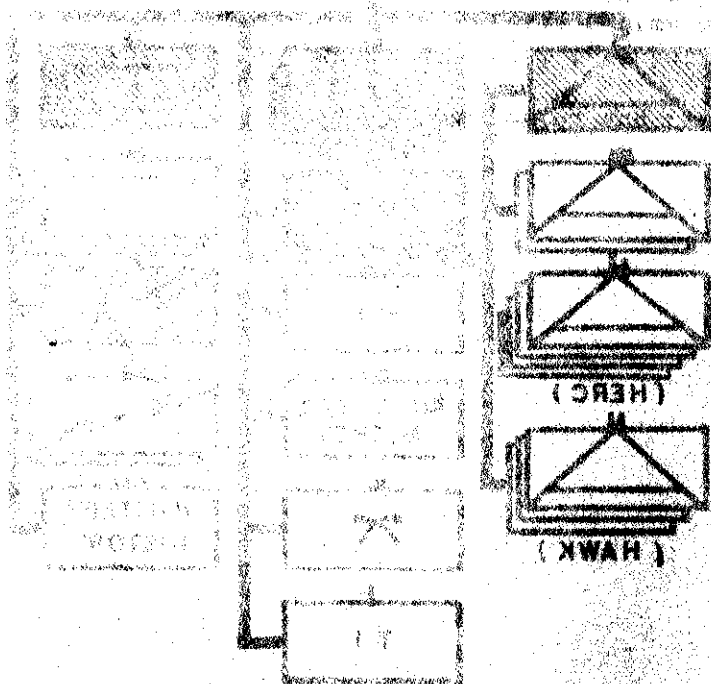


By looking at the chart you can see that the air defense brigade has aircraft at brigade level only. What are two other brigades that have aircraft at brigade level only? engineer and signal.

Frame 12.

Answer: 1. A., 2. H., 3. C., 4. G., 5. F., 6. I., 7. E., 8. D., 9. B.

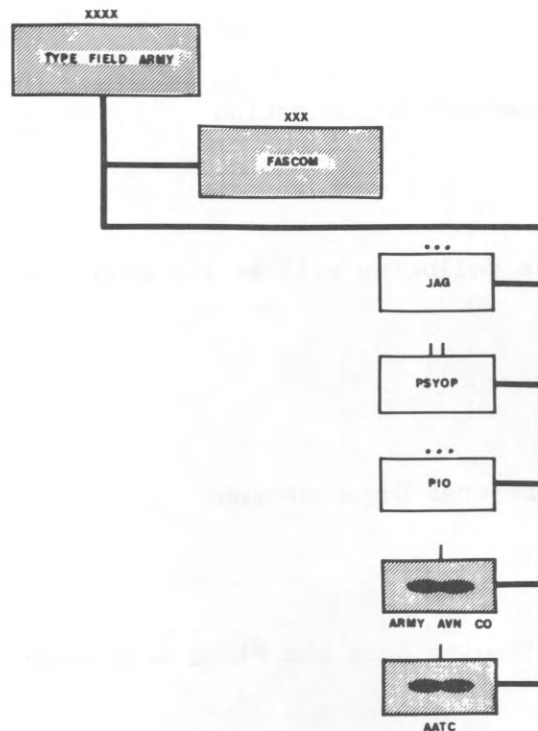
NOW TURN THE PAGE AND COMPLETE THE SELF EVALUATION EXERCISE.



Frame 6.

Answer: Engineer, signal.

Frame 7.



An aviation company supports the field army by providing aircraft support, and operation of the field army landing area.

The aviation air traffic control company is responsible for air traffic regulations, enroute navigational aids, and assistance to airborne personnel in the combat zone.

1. If a pilot wishes to check on weather along his route, he would contact:
 - a. Corps.
 - b. Air cavalry troop.
 - ☒ c. AATC.
 - d. Army aviation company.
2. Which of the above will control airports at the field army level?
army aviation co.
3. The chain of command from the army aviation company runs directly to:
 - ☒ a. Field army.
 - b. FASCOM.
 - c. JAG.

SELF EVALUATION EXERCISE

FIELD ARMY

1. In the Army organization the Field Army falls under:
☐ A. Corps
☐ B. Division
☒ C. National Defense Organization
☐ D. Brigade
2. Normally which of the following will be the next unit in size under the Field Army?
☐ A. Division
☒ B. Corps
☐ C. National Defense Organization
☐ D. Brigade
3. Upon which of the following does the Field Army rely for logistical (supplies) support?
☒ A. Fascom
☐ B. Air cavalry troop
☐ C. Corps
☐ D. Division
4. The type Field Army has:
☐ A. 1 Corps
☐ B. 2 Corps
☒ C. 3 Corps
☐ D. No Corps

5. Which of the following have nuclear capability?

- ☒ A. Pershing missile battalion
- ☐ B. Air cavalry squadron
- ☐ C. Signal Battalion
- ☐ D. Engineer battalion

6. Which of the following is responsible for operating air fields in the Field Army area?

- ☒ A. Army aviation company
- ☐ B. Aviation air traffic control company
- ☐ C. Corps
- ☐ D. Field Army support command

ANSWERS TO SELF EVALUATION EXERCISE

1. C.
2. B.
3. A.
4. C.
5. A.
6. A.

ORGANIZATION OF THE ARMY HANDOUT

DEFINITIONS

1. Logistics - The branch of military science having to do with moving, supplying and quartering troops.
2. Organic - In organization that which is a part of, or inherent to a unit.
3. Echelon - (ladder rung) A step like formation of units of troops.

SIZE INDICATION

TO SHOW THE SIZE OF A SPECIFIC UNIT OR ACTIVITY, THE APPROPRIATE SIZE INDICATION IS PLACED ON TOP OF THE BASIC SYMBOL.

SQUAD	•
SECTION OR UNIT LARGER THAN SQUAD BUT SMALLER THAN A PLATOON.	••
PLATOON OR DETACHMENT	•••
COMPANY, BATTERY, OR TROOP	I
BATTALION OR SQUADRON	II
GROUP OR REGIMENT	(II)
BRIGADE OR EQUIVALENT COMMAND	X
DIVISION	XX
CORPS	XXX
ARMY	XXXX
ARMY GROUP	XXXXX

EXAMPLES:



A PLATOON



A COMPANY
OBSERVATION POST



A CORPS
HEADQUARTERS

ARM OR BRANCH OF SERVICE

Arm or Branch	Symbol
Airborne	
Armor	
Army Security Agency	
Artillery	
Aviation	
Chemical (CBR)	
Coast Artillery (Foreign Armies Only)	
Cavalry (Reconnaissance)	
Engineer	
Finance (Pay)	
Infantry	
Medical	
Military Intelligence	
Military Government or Civil Affairs	
Military Police	
Ordnance	
Postal	
Quartermaster	
Signal	
Transportation	
Veterinary	
<i>air Defense artillery</i>	