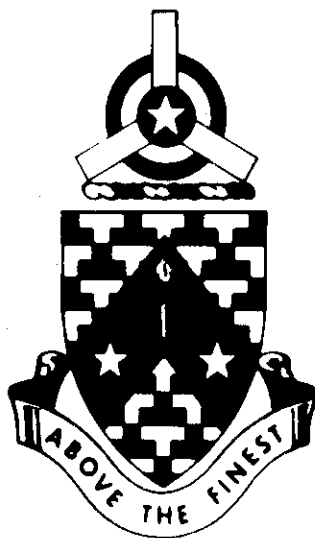


PROGRAMED TEXT

**ORGANIZATION OF THE ARMY
PART III
THE TYPE CORPS**



JANUARY 1968

**UNITED STATES ARMY
PRIMARY HELICOPTER SCHOOL
FORT WOLTERS, TEXAS**

PROGRAMED TEXT

PROGRAM TEXT

FILE NO:

PROGRAM TITLE

Organization of the Army
Part III
The Type Corps

POI SCOPE: Teach the student the type corps, its units having organic aviation, the organizational chart and chain of command.

INSTRUCTOR REFERENCES:

Common Subjects and Reference Data for Army Aviation in the Field Army, January 1968.

PREPARED BY:

DATE:

TFPL

January 1968

REVISED BY:

DATE:

APPROVED BY:

DATE:

Frederick B. Weller
FREDERICK B. WELLER, LTC
Chief, TP&A

May 1968

TABLE OF CONTENTS

PROGRAMED TEXT
FILE NO:

PROGRAM TITLE:
Organization of the Army
Part III

CONTENTS	PAGE NUMBER
1. PREFACE _____	iii
2. PERFORMANCE OBJECTIVES _____	1
3. PROGRAM _____	2
a. _____	

b. _____	

c. _____	

d. _____	

e. _____	

4. SELF EVALUATION EXERCISE _____	22
5. ANSWERS TO SELF EVALUATION EXERCISE _____	23
6. ITEMS TO BE ISSUED _____	
WITH PROGRAM <u>Type Corps Organization Chart</u>	24
7. _____	
<u>Organization of the Army Handout</u>	25
8. _____	
9. _____	
10. _____	

PREFACE

This self-teaching course in Army organization is designed to acquaint you with the chain of command from the President as Commander in Chief down through division organization.

The instructional material in this text is Part III of a five part course. You will receive each part in the proper sequence, and will be able to develop the organization starting from the top levels. The five parts are as follows:

- Part I. National Defense Organization.
- Part II. The Type Field Army.
- Part III. The Type Corps.
- Part IV. The Divisions.
- Part V. The Airmobile Division.

ORGANIZATION OF TEXT

This text consists of frames, panels, and a self evaluation exercise. A frame presents a teaching point which usually requires an answer to a specific problem. A panel is an illustration or other information needed to solve the problems. The self evaluation exercise is designed to allow you to test yourself on the material learned in the text.

The problems in some frames require you to write an answer. In others, you select a correct choice. Still other problems have more than one correct choice. A few frames are information frames and do not need an answer.

HOW TO WORK THE TEXT

1. Start with frame 1 of Part III. Answer it correctly by marking the correct choice in pencil.
2. Turn the page. The correct answer to frame 1 is printed above frame 2. If your choice was incorrect, turn back to frame 1 to re-study the frame and change your answer to the correct one.
3. Answer frame 2 as required and continue on through the program.

SELF EVALUATION EXERCISE

When you have finished all the frames, turn to the self evaluation exercise located at the end of the text. Work all of the problems, then compare your answers with the answer sheet provided. To receive the full benefit of this exercise do not read the answers before answering all questions. Should you not be able to answer a problem, turn back to the text and study the part pertaining to that question.

MATERIAL FURNISHED:

Page 24 of this text is an organization chart of the type corps. Separate this page from the text and keep in front of you as you proceed.

PERFORMANCE OBJECTIVES

Upon completion of this program, and with the aid of the type corps organizational chart, you will be able to:

1. Recognize the units in the type corps having aviation capabilities.
2. Locate the assignments a warrant officer aviator may have at corps level.
3. Read and interpret the organizational chart.
4. Trace the chain of command from a given position.
5. Determine the location of corps in the Army organization.

INTRODUCTION

You have now seen the organization of the type field army and found that it contains three (3) corps which, like the field army, can be tailored to fit the military situation.

We will now study the type corps, keeping in mind that this unit may or may not have the listed units in the quantities we will study.

If you will remove pages 24 and 25 of your program and place them before you, you will be able to see the composition of the model corps and how each section we will study fits in.

Our primary interest will be in those units having Army aviation assigned since that is where you, as aviators, are likely to find yourselves.

TURN TO FRAME 1 PAGE 4

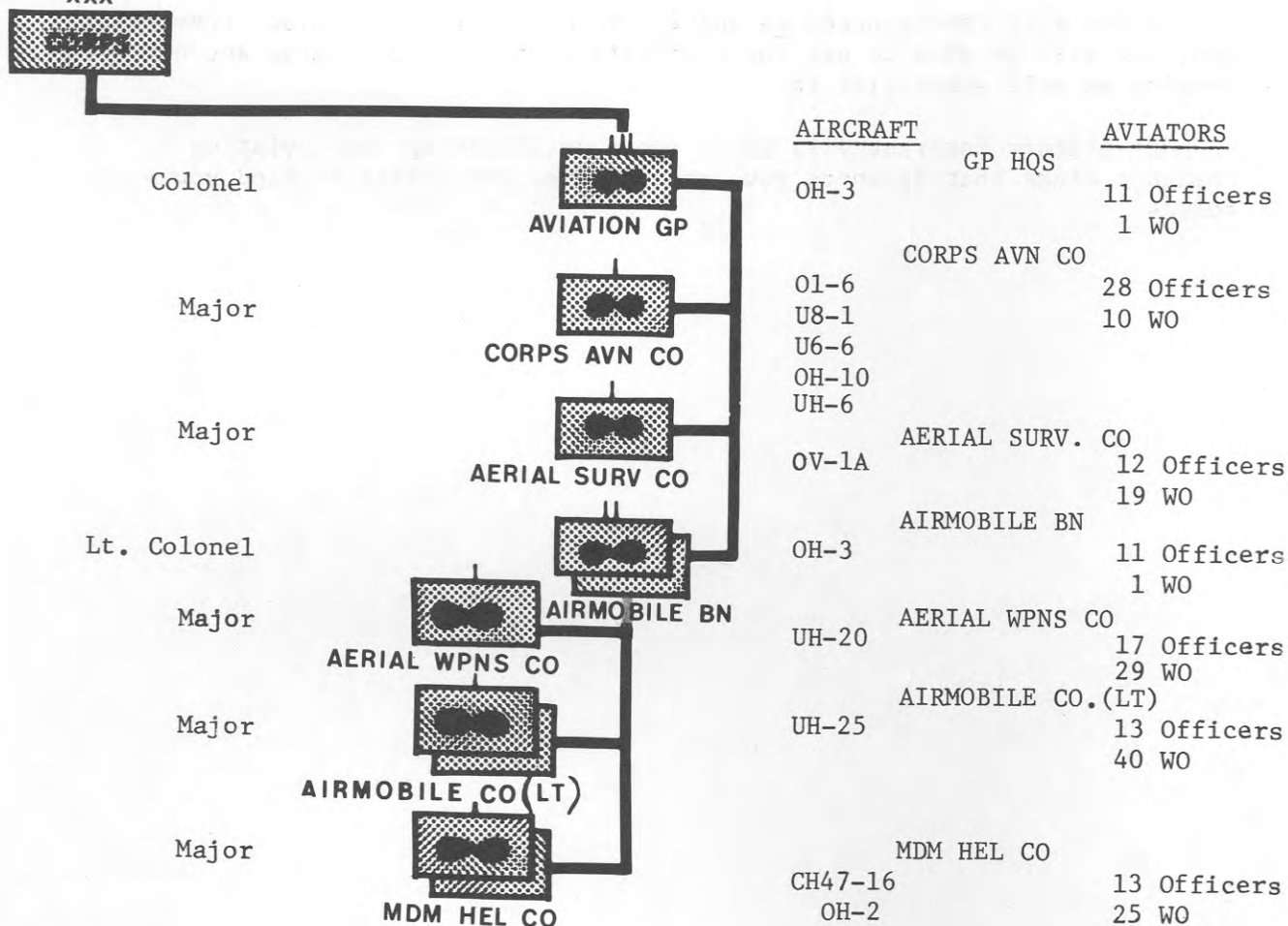
- ANS: 1. c - Follow the command line in chart. Section leaders and platoon leaders are in the chain of command.
2. d - It has an airlift section ③ and a tactical support section ④

FRAME 10.

The largest aviation element in the type corps is the aviation group which is similar to the one in the field army, and supervises the activities of three (3) to seven (7) separate aviation battalions.

Units found in the corps aviation group not normally found in an aviation group are the corps aviation company and the aerial surveillance company.

Lt. General
XXX



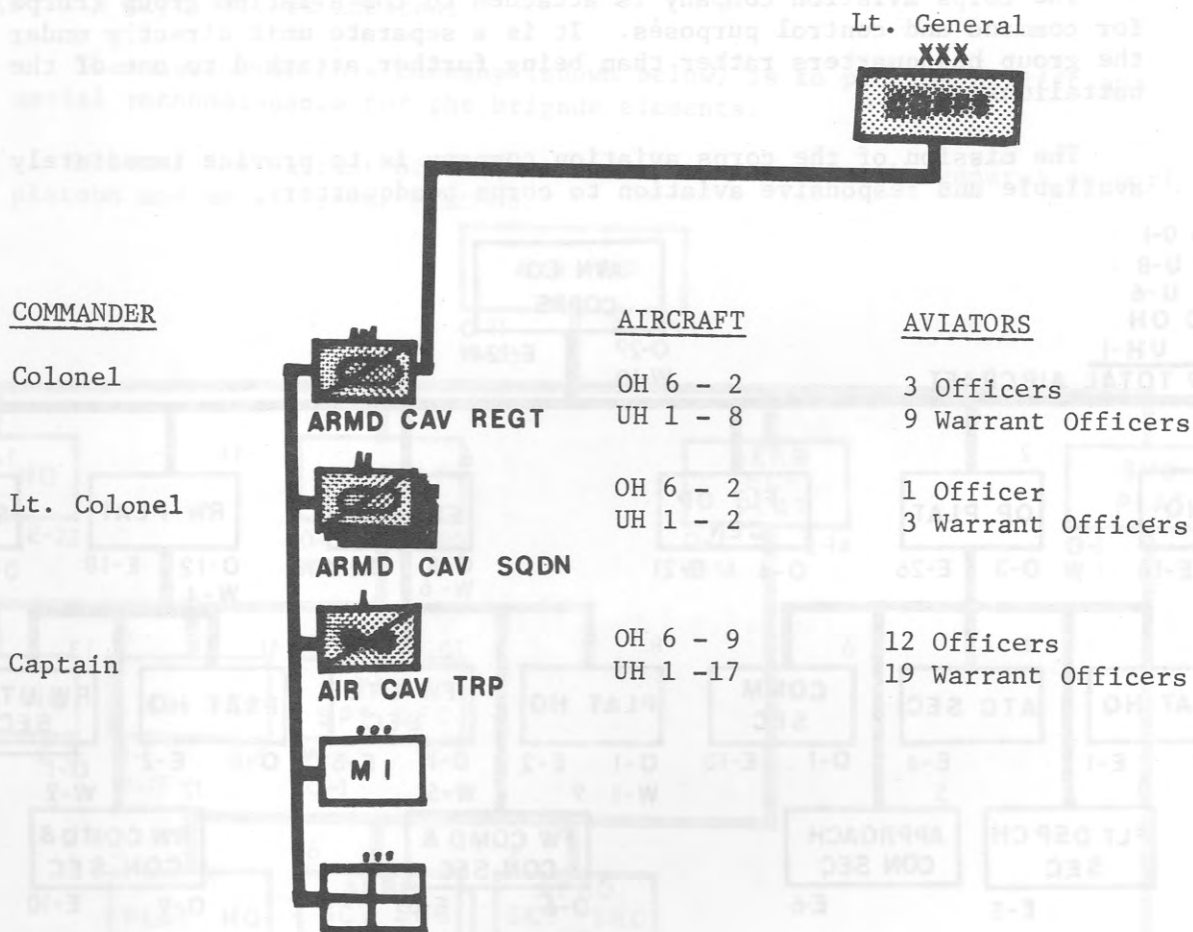
Which of the following units would NOT report directly to the aviation group commander?

- Aerial surveillance company.
- Airmobile battalion.
- ☒ Aerial weapons company.
- Corps aviation company.

TURN TO FRAME 11 PAGE 5

FRAME 1.

Each corps has an armored cavalry regiment, normally commanded by a Colonel and composed of a headquarters and headquarters troop (company), three (3) armored cavalry squadrons and an air cavalry troop.



(Fill in the blank)

In the command line, the regimental commander reports to the corps commander, and the armored cavalry squadron commander to the regimental commander.

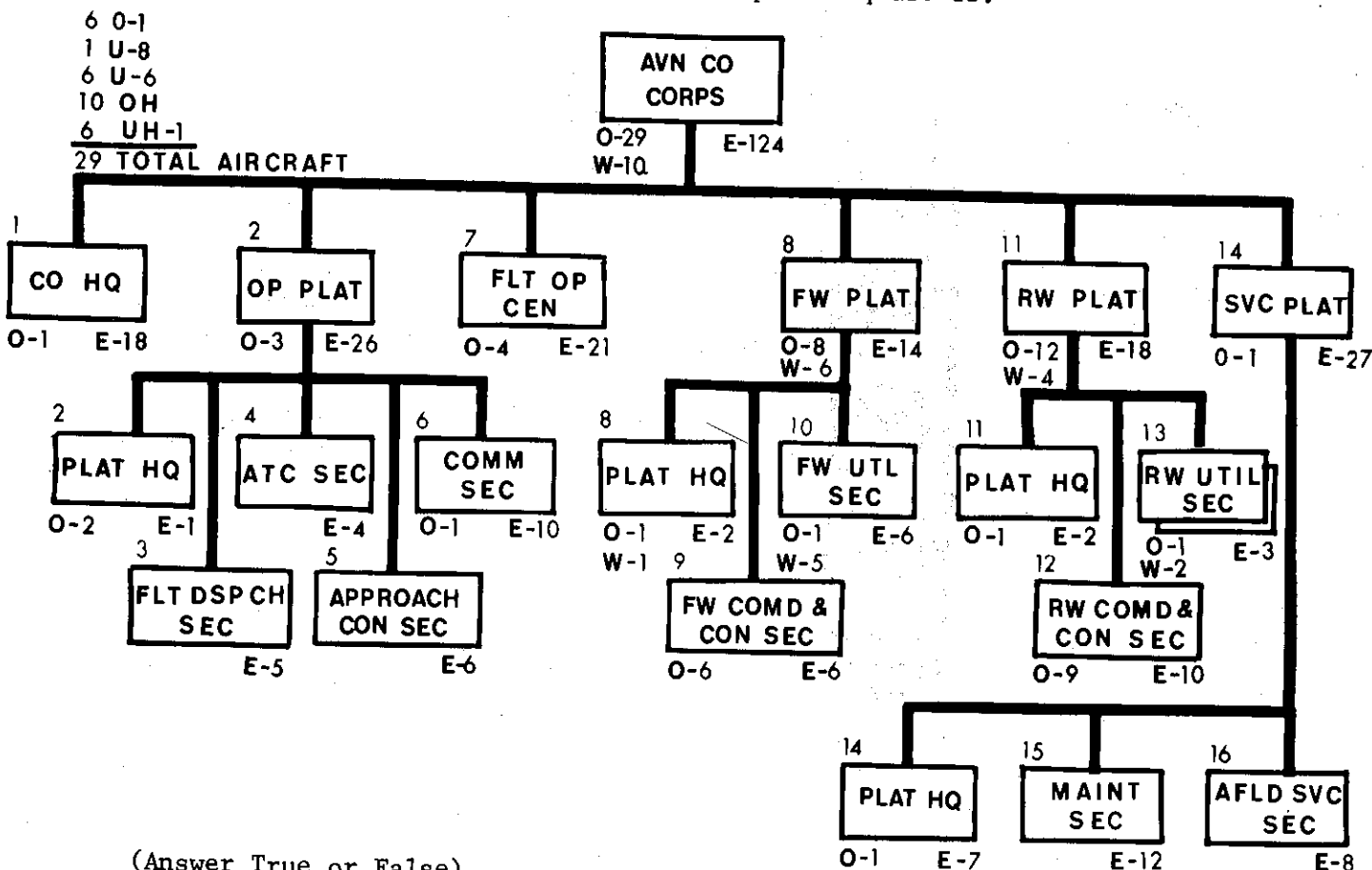
The air cavalry troop commander reports to the Armored Cav Regt. Co.

ANS: c - The aerial weapons company is a part of the airmobile battalion and would therefore report there.

FRAME 11.

The corps aviation company is attached to the aviation group (corps) for command and control purposes. It is a separate unit directly under the group headquarters rather than being further attached to one of the battalions.

The mission of the corps aviation company is to provide immediately available and responsive aviation to corps headquarters.



The aviation company commander reports directly to the battalion headquarters to which his unit is attached.

a. True

☒ b. False

ANS: Regimental commander - There is one air cavalry troop per regiment. It is separate from the armored cavalry squadrons. (See command line previous page.)

FRAME 2.

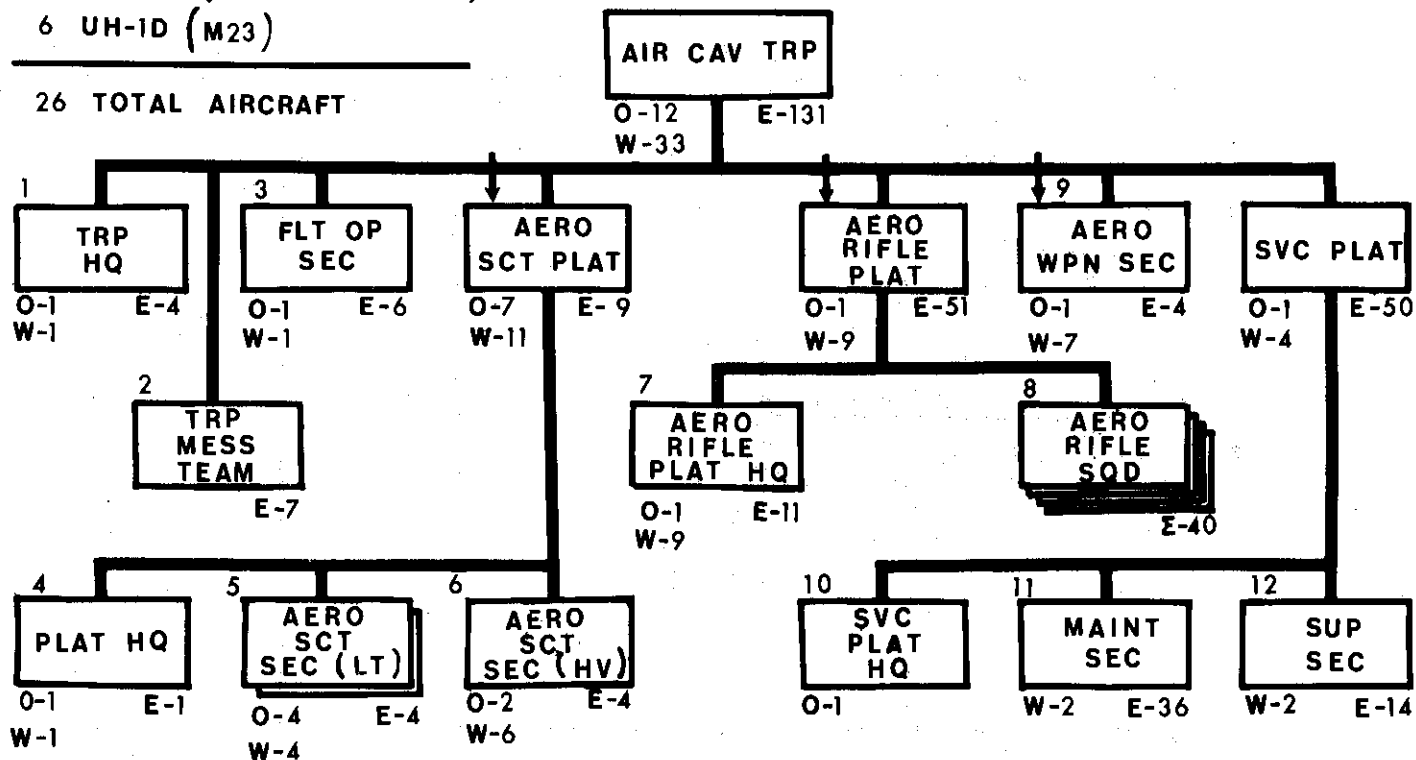
To perform their mission of seizing and dominating lightly defended areas or terrain features and extending the reconnaissance and security capabilities of the regiment, the air cavalry troop is organized as shown below with three major flight elements marked with an arrow (↓).

9 OH-6A (XM27)

11 UH-1B/C (M5, XM21, XM22)

6 UH-1D (M23)

26 TOTAL AIRCRAFT



The three (3) major flight elements of the air cavalry troop are:

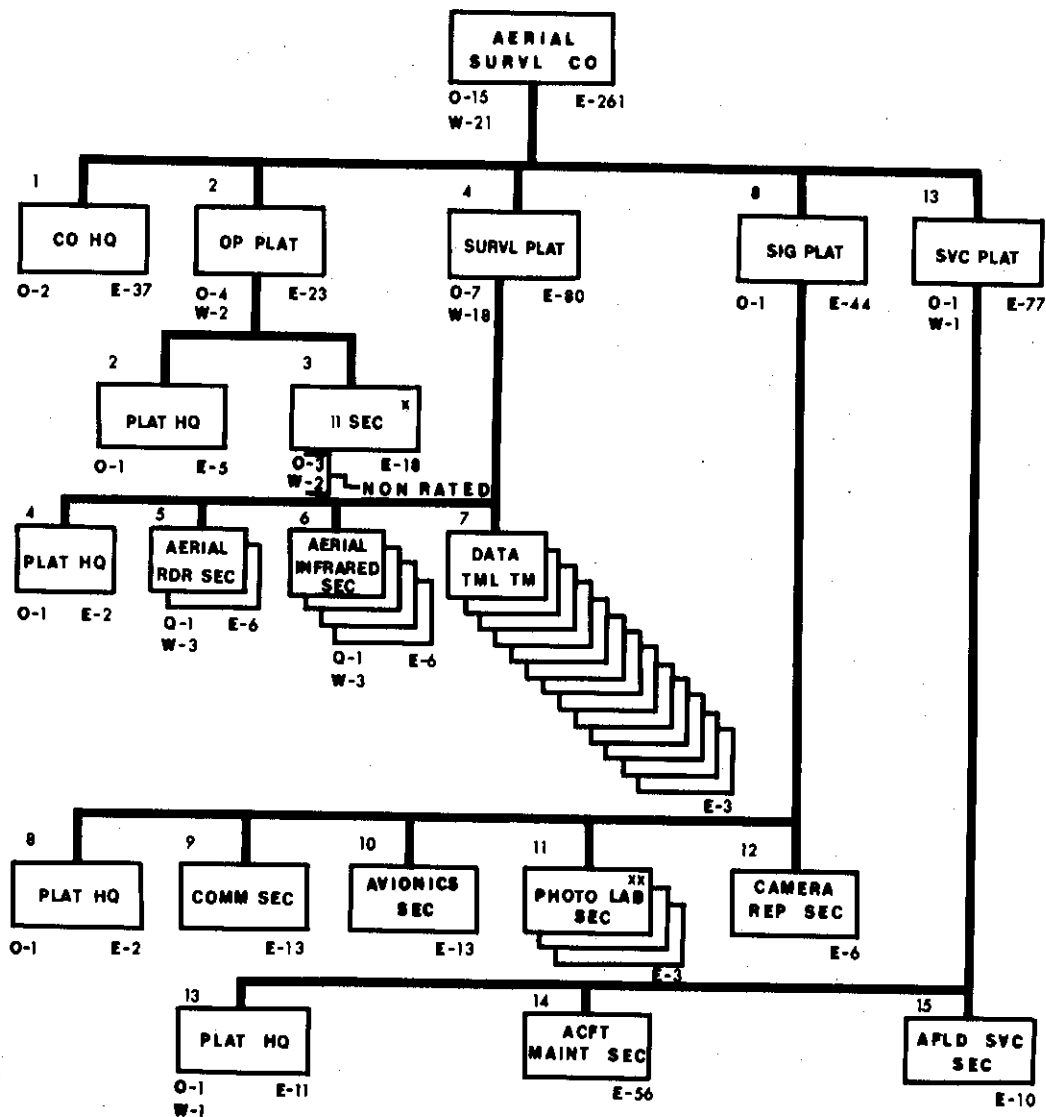
- a. *sct plat*
- b. *rifle platoon*
- c. *weapon sec*

ANS: b. False - The aviation company (corps) is not attached to a battalion. It, like the aerial surveillance company, is a separate company under the aviation group headquarters.

FRAME 12.

The aerial surveillance company is also a separate company under the aviation group, and like the corps aviation company is peculiar to the corps aviation group.

The mission is to provide aerial surveillance and target acquisition for corps units.



(Answer True or False)

As a member of the aerial surveillance company, you could be at either corps or army level.

a. True

☒ b. False

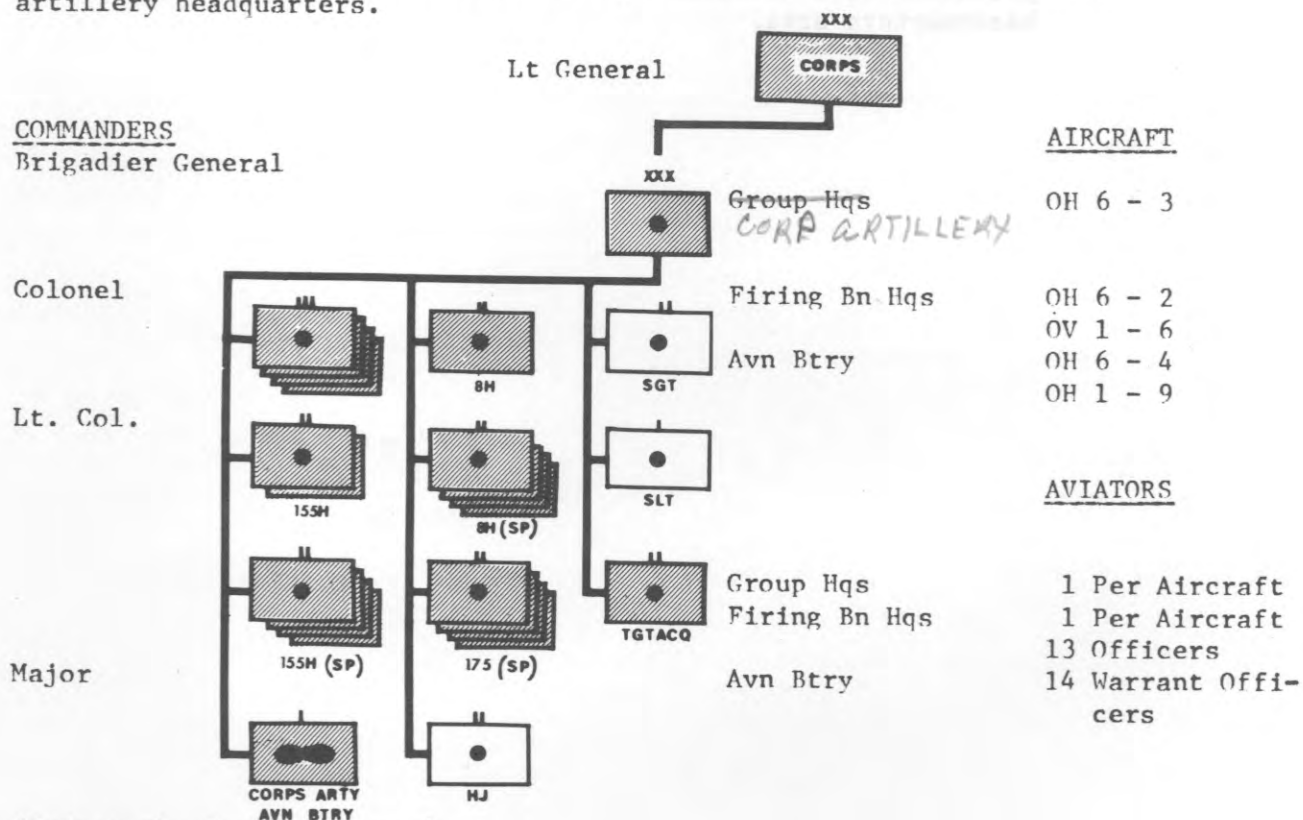
- ANS: a. Aero scout platoon
b. Aero rifle platoon
c. Aero weapons section

FRAME 3.

There are fifteen (15) firing battalions (as shown below) plus other artillery units assigned to corps artillery.

There are four (4) artillery groups assigned to which the corps artillery commander attaches his battalions for command and control as the mission dictates.

The corps artillery aviation battery remains under control of corps artillery headquarters.



(Select the Correct answer)

Artillery battalions are assigned to the artillery groups on a permanent basis.

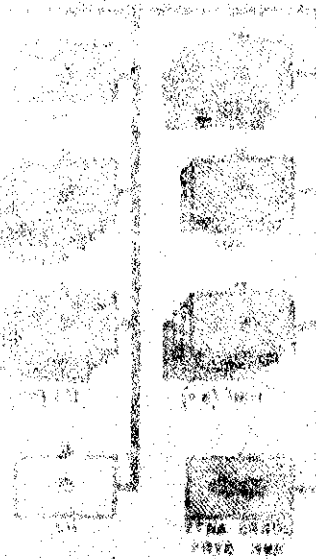
- a. True
b. False

ANS: b. False - There is no aerial surveillance company at army level.

FRAME 13.

If a member of the corps headquarters calls for aerial support, you, as aviation group scheduling officer, would give the following missions to which unit? (Match the correct unit with the mission).

- | | |
|--|--|
| <p>1. <u>b</u> The corps G2 wants photos of an area along the corps front.</p> <p>2. <u>a</u> The corps G3 wants transportation to a division headquarters area.</p> | <p>a. Corps aviation company</p> <p>b. Aerial surveillance company.</p> <p>c. Separate brigade aviation company.</p> |
|--|--|



(10-10-10)

ANS: b. False. They are attached, not assigned. Attachment may last for a period of months or years, as the mission dictates.

FRAME 4.

The 50th Artillery Battalion (155H) has been attached to the 212th Artillery Group. As an aviator in the 50th your chain of command would be:

- a. Battalion → Group → Corps.
- b. Battalion → Corps.
- c. Battalion → Group → Corps Artillery → Corps.
- d. Battalion → Corps Artillery → Corps.

ANS: 1. b - The aerial surveillance company provides surveillance support for the headquarters.

2. a - The corps aviation company provides transportation for the headquarters.

The aviation group does not control the separate brigade aviation company.

FRAME 14.

The airmobile battalions of the aviation group have the primary mission of providing tactical transport backup support for the organizations attached to the corps.

The airmobile battalion at corps will normally have a headquarters and headquarters company and:

- one aerial weapons company.
- two airmobile companies (light).
- two aviation medium helicopter companies.

(Select the correct response)

One of the corps organizations finds it needs backup transport support by a medium helicopter company for a planned airlift. The request would be transmitted to:

- a. Airmobile battalion → medium helicopter company.
- b. Aviation group → medium helicopter company.
- c. Aviation group → airmobile battalion → medium helicopter co.
- ☒ d. Corps → aviation group → airmobile battalion → medium helicopter co.

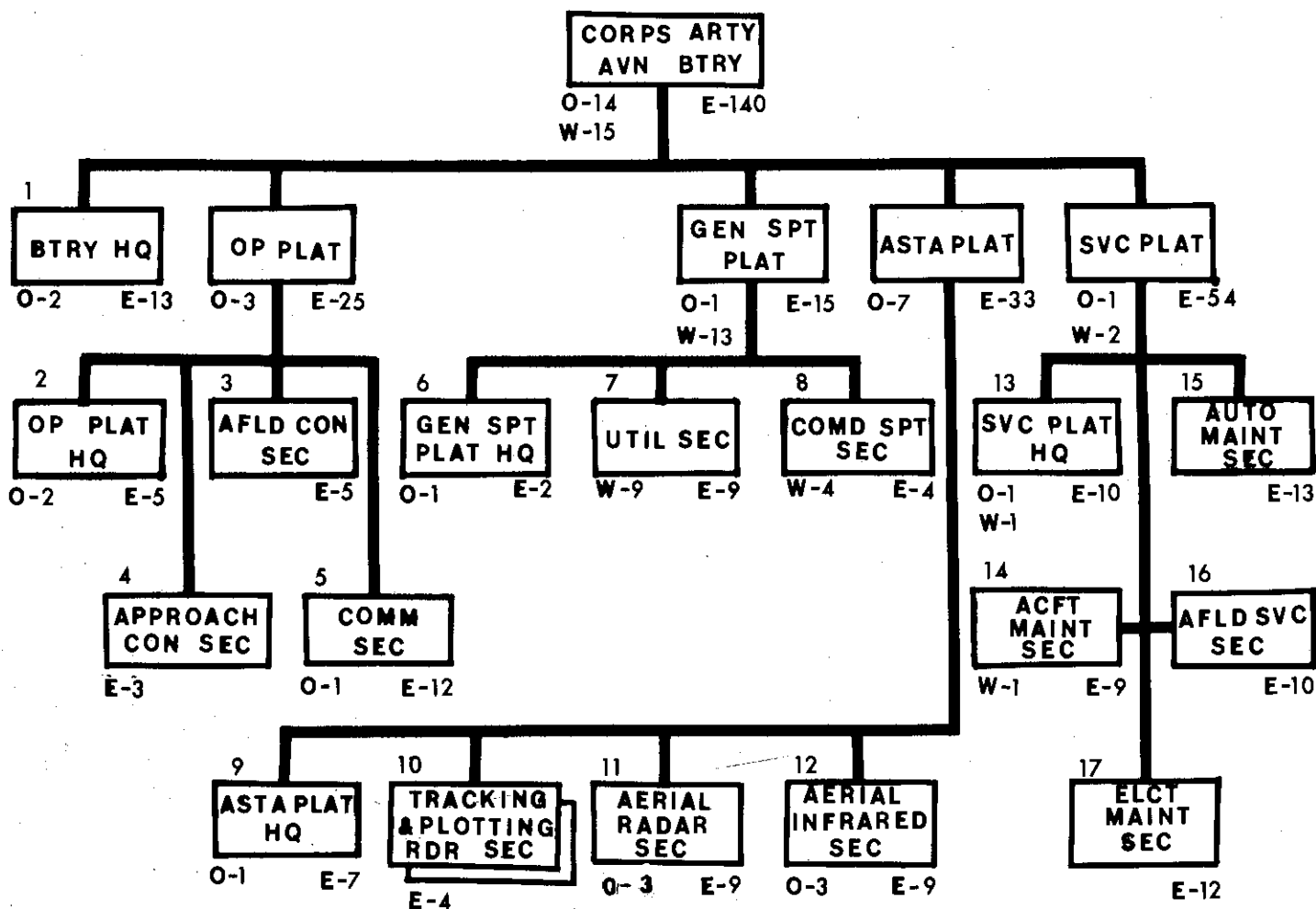
ANS: c. Battalion → Group → Corps Artillery → Corps. When a unit is attached to an organization, that organization assumes command and control responsibilities.

FRAME 5.

The corps artillery aviation battery is directly under the corps artillery headquarters.

Its mission is to provide aerial target acquisition support, and aviation support to corps artillery headquarters and other units not having organic aircraft.

As shown below, most of the warrant officers are in the utility section ⑦ and the command support section ⑧.



(Fill in the blank)

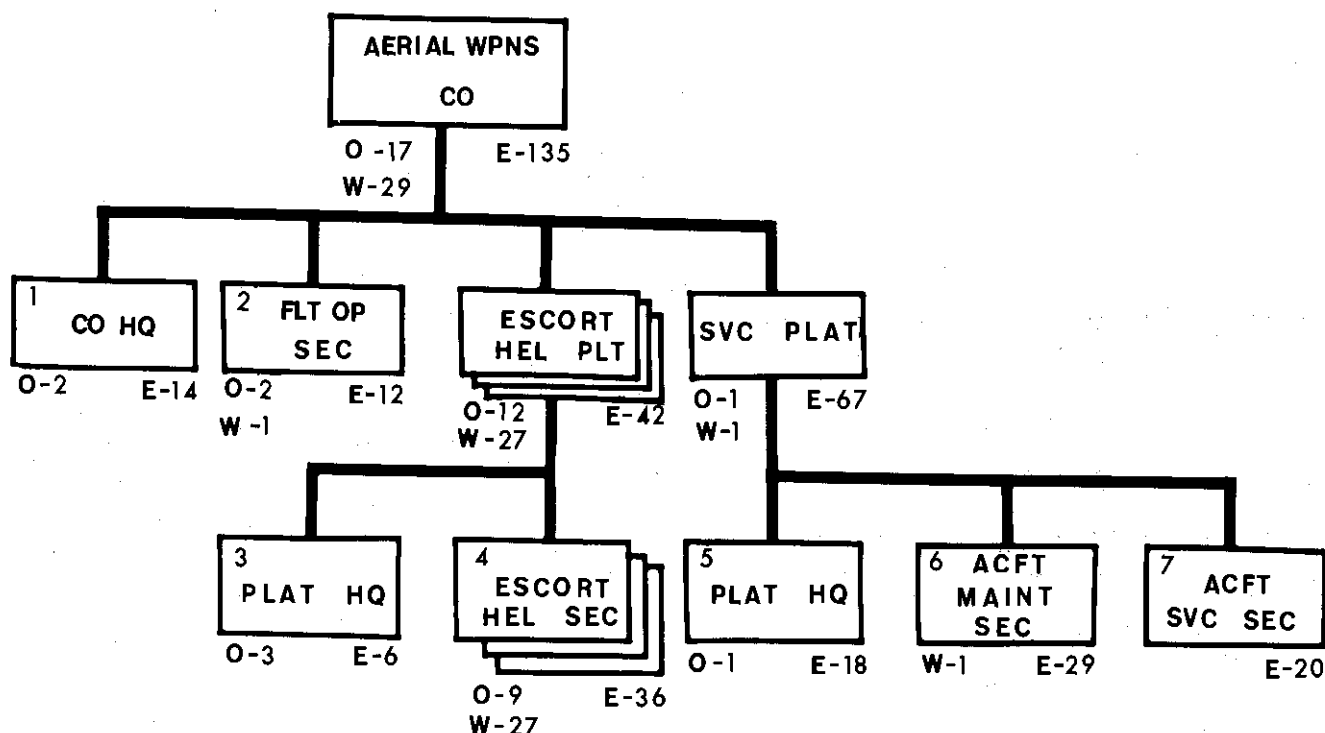
The utility and command support sections of the corps artillery aviation battery are in the Gen. Spt. Platoon.

ANS: d. - The corps is the command headquarters and will normally approve the mission and establish priorities.

FRAME 15.

The aerial weapons company of the battalion has the primary mission of providing armed escorts for lift companies.

To accomplish this, it has three (3) escort helicopter platoons of three (3) sections each.



(Fill in the blank)

As a warrant officer aviator in the aerial weapons company, you would probably be assigned to an escort helicopter section.

ANS: General support

FRAME 6.

The commander of the corps artillery aviation battery is responsible for proper unit operation to:

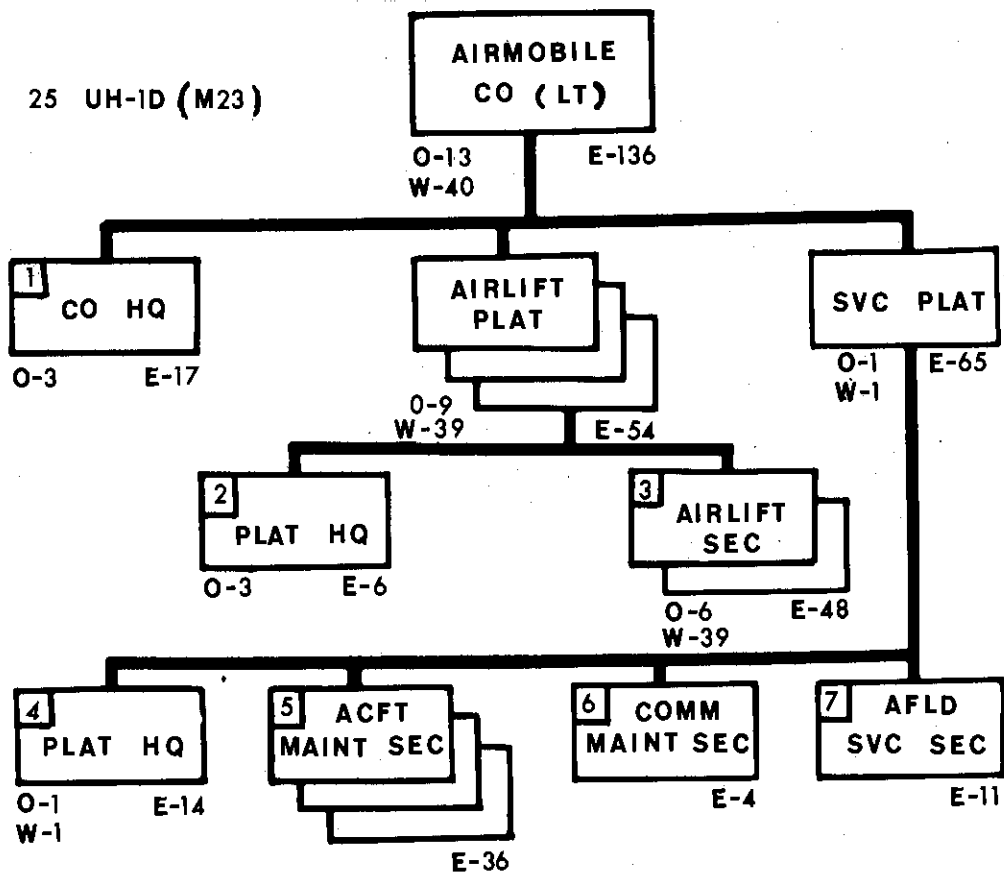
- a. One of the artillery groups.
- b. Corps artillery headquarters.
- c. Corps headquarters.
- d. One of the artillery battalions.

ANS: Escort helicopter section - There are a total of nine (9) escort helicopter sections having three (3) warrant officers each.

FRAME 16.

The airmobile companies have the same organization and mission as those in the division aviation battalion.

Each of the airlift platoons can operate detached from the company for an extended period with assistance from the company or the support unit.



(Fill in the blanks)

There are 3 airlift platoons in the airmobile company (lt)
(number)
and the platoon leaders are directly responsible to the Airmobile
Company Co. for operation and control.

ANS: b. Corps artillery headquarters - The aviation battery has no attachment to any corps artillery unit other than the corps artillery headquarters.

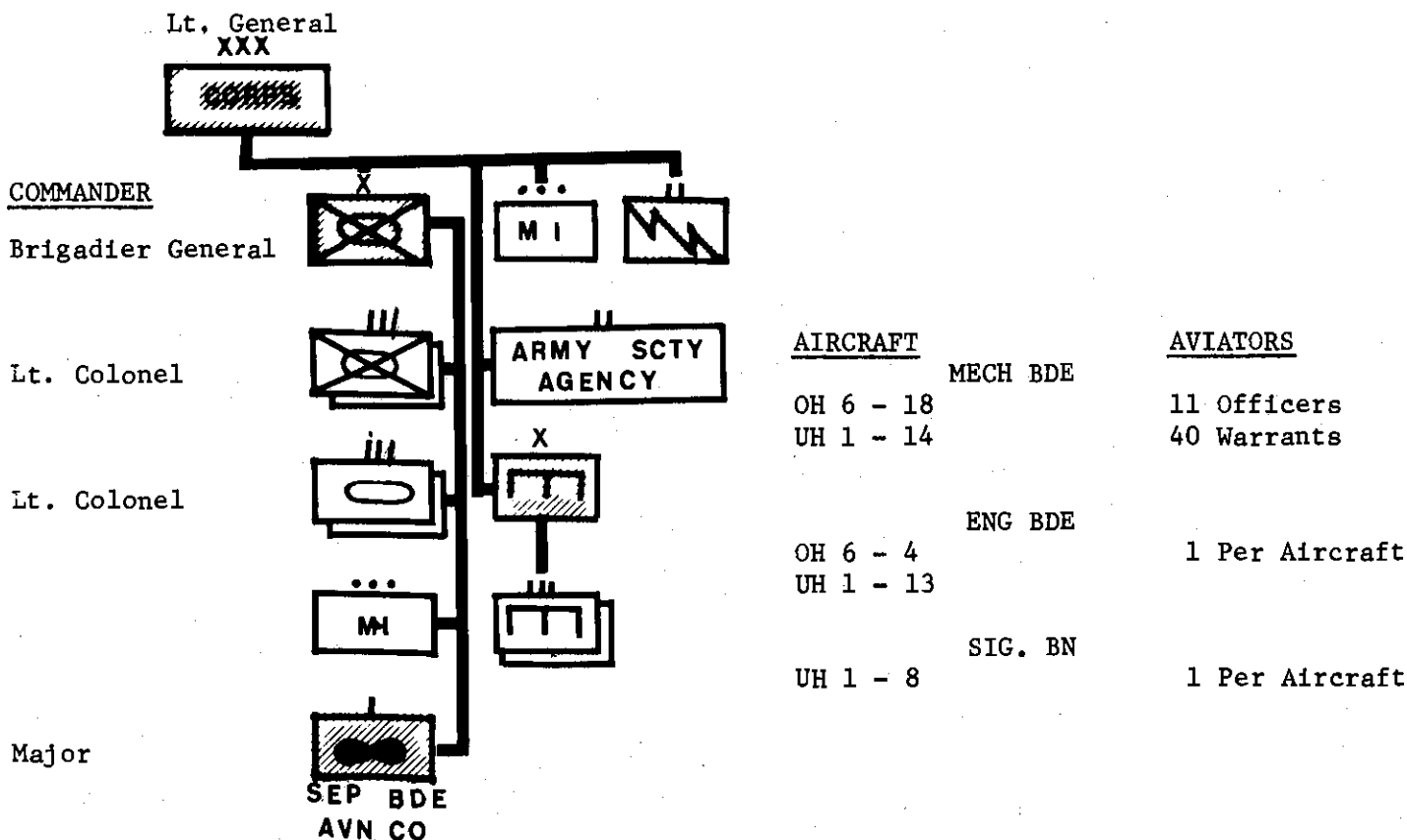
FRAME 7.

Aviation elements are also found in the separate mechanized brigade, the engineer brigade, and the signal battalion.

The engineer brigade headquarters and the signal battalion headquarters provide command and control for junior elements.

Engineer aircraft are found in the brigade headquarters, in each of the headquarters of the three groups, and in the topographic company.

Signal aircraft are located in each of the two (2) signal companies.



The command line runs from corps headquarters through the engineer brigade to the two (2) engineer groups.

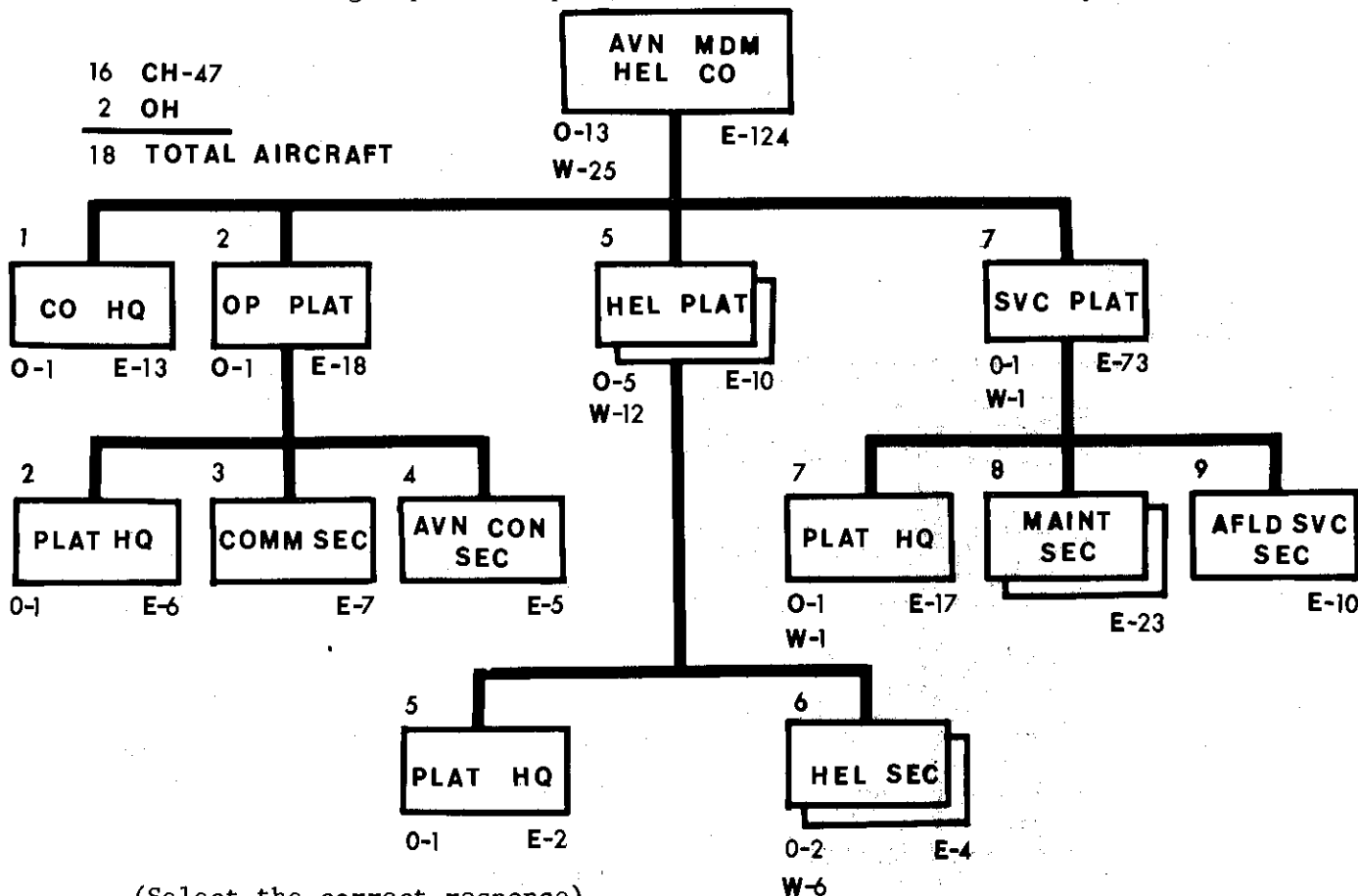
there are 3 eng. groups at all times

ANS: 3 Company commander (commanding officer)

FRAME 17.

The medium helicopter companies are the same as those found in FASCOM at field army, though their primary mission here will be tactical support rather than logistical.

The allocation of the capabilities of these units is more heavily controlled at group and corps level than is the airmobile companies.



(Select the correct response)

The chain of command from you, as a warrant officer in a helicopter section ⑥, to the company commander is:

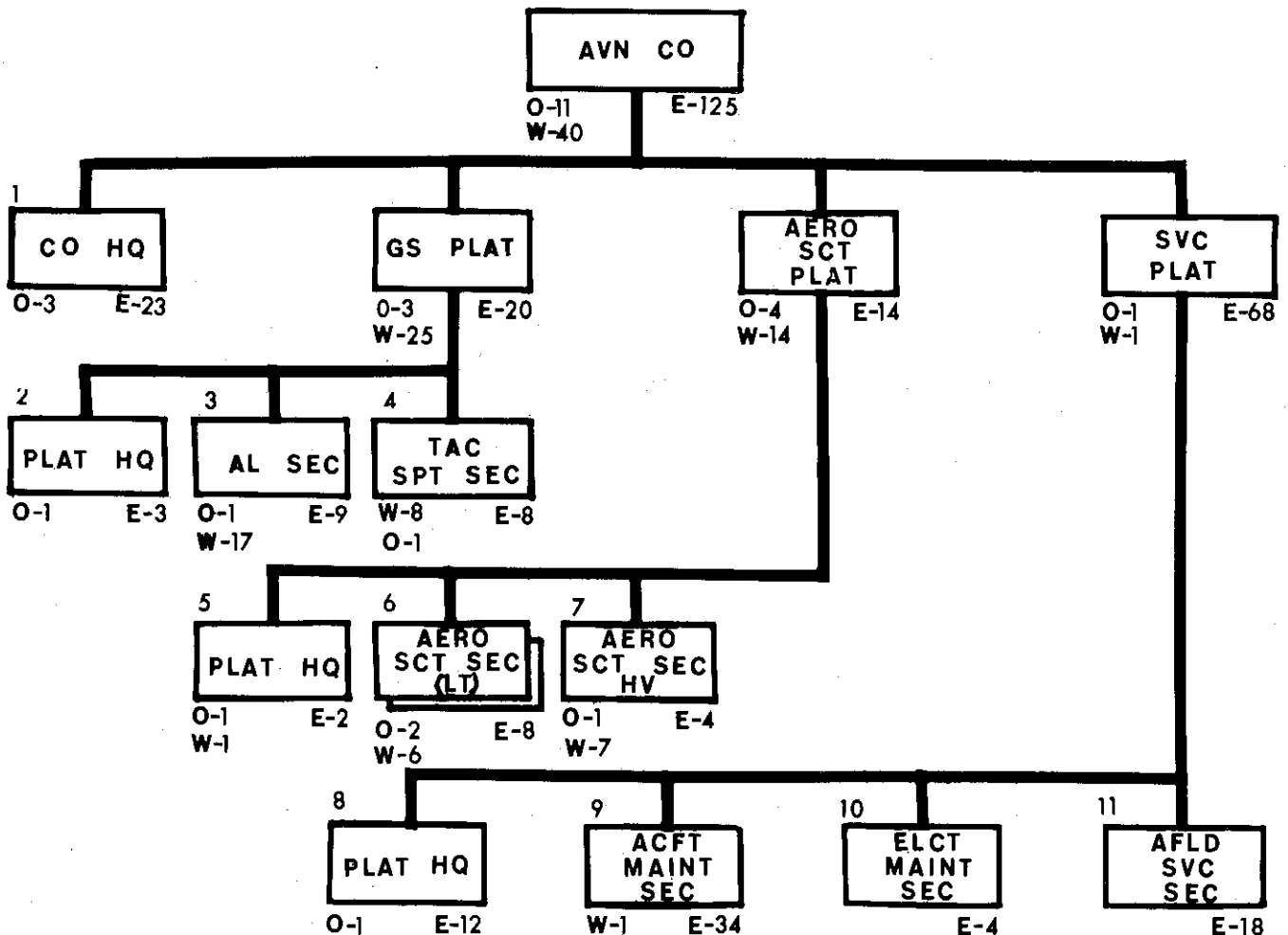
- a. Section leader → platoon leader → company commander.
- b. Section leader → platoon leader → operations officer → CO.
- c. Platoon leader → company commander.
- d. Section leader → operations officer → company commander.

FRAME 8.

The separate mechanized brigade has an aviation company in which all of its aircraft are located.

The mission of this company (shown below) is to provide airlift and aerial reconnaissance for the brigade elements.

Most of the warrant officer aviators are found in the general support platoon and aerial scout platoon.



As a warrant officer assigned to the service platoon of the above aviation company you would be in the:

- a. Electrical maintenance section.
- b. Aircraft maintenance section.
- c. Tactical support section.
- d. Airfield service section. 18

ANS: a. Section leader → platoon leader → company commander.

FRAME 18.

1. Which of the following are under the command and control of the airmobile battalion?

- a. Medium helicopter company.
- b. Airmobile company (lt).
- c. Aerial weapons company.
- ☒ d. All of the above.

2. Which of the following are a part of the aviation group?

- a. Air cavalry troop.
- b. Separate brigade aviation company.
- ☒ c. Airmobile battalion.
- d. Artillery aviation battery.

ANS: b. See box ⑨ previous page.

FRAME 9.

(Refer to separate brigade aviation company chart and select the correct response).

1. The chain of command for a warrant officer in the aero scout section (1t) would be:

a. WO → CO

b. WO → platoon leader → CO

③ c. WO → section leader → platoon leader → CO

d. WO → section leader → platoon leader → operations officer → CO

2. The general support platoon has a platoon headquarters and _____ flight sections.

a. 5

b. 4

c. 3

④ d. 2

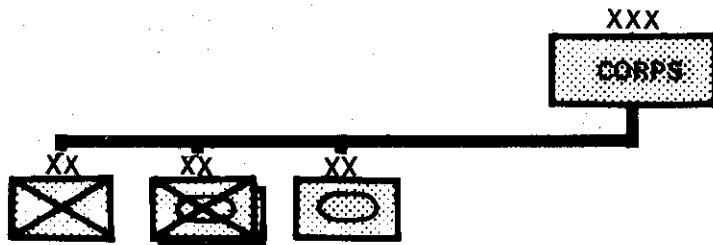
STOP. RETURN TO FRAME 10 PAGE 3

- ANS: 1. d - All of the above
2. c - Airmobile battalion.
-

FRAME 19

The maneuver elements of the corps are the divisions. In the type corps there are two (2) mechanized divisions, an infantry division, and an armored division; however, this may be changed to adapt the corps capabilities to the mission.

The other organizations on the corps chart provide support for these divisions.



This concludes our discussion of the type corps. You now know where you as a warrant officer aviator may be assigned at corps level.

Your next class will familiarize you with the division elements.

CONTINUE TO THE SELF EVALUATION EXERCISE

SELF EVALUATION EXERCISE

TYPE CORPS

1. Which of the following corps units have aviation assigned or attached?
 - a. Anti-aircraft artillery group.
 - b. Chemical battalion.
 - c. ASA battalion.
 - ☒ d. Engineer brigade.

2. Which of the following units has an aviation company?
 - a. Signal battalion.
 - ☒ b. Artillery groups.
 - ☒ c. Armored cavalry regiment.
 - d. Anti-aircraft artillery group.

3. As a warrant officer aviator in a weapons section of the aerial weapons company your chain of command to the airmobile battalion commander would be:
 - a. Section leader → company CO → battalion CO.
 - b. Platoon leader → operations officer → company CO → Bn CO.
 - ☒ c. Section leader → platoon leader → company CO → Bn CO.
 - ☒ d. Platoon leader → company CO → battalion CO.

4. Which of the following is a true statement?
 - a. The corps normally reports directly to the Secretary of Defense.
 - ☒ b. The corps is responsible to the field army for control of several divisions.
 - c. The division is senior to a corps.
 - d. None of the above.

5. Which of the following corps aviation group units is not under control of an airmobile battalion.
 - ☒ a. Corps aviation company.
 - b. Aerial weapons company.
 - c. Airmobile company (lt).
 - d. Medium helicopter company.

6. Select the correct command line for an airmobile battalion.
 - ☒ a. Airmobile battalion → aviation group → corps → field army.
 - ☒ b. Airmobile battalion → corps → field army.
 - c. Airmobile battalion → corps artillery → corps → field army.
 - d. Airmobile battalion → aviation group → corps artillery → corps field army.

ANSWERS TO SELF EVALUATION EXERCISE

1. d.
2. c.
3. c.
4. b.
5. a.
6. a.

L2380 Army-Ft. Sill, Okla.