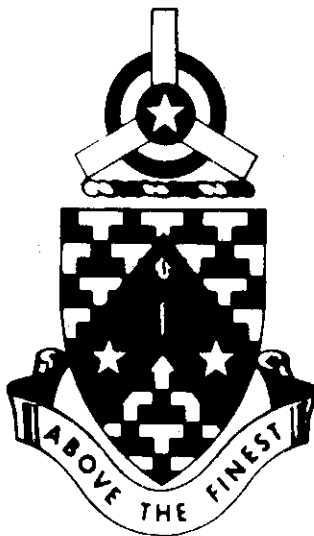


# PROGRAMED TEXT

ORGANIZATION OF THE ARMY  
PART IV  
THE DIVISION



JANUARY 1968

UNITED STATES ARMY  
PRIMARY HELICOPTER SCHOOL  
FORT WOLTERS, TEXAS

# PROGRAMED TEXT

---

## PROGRAM TEXT

**FILE NO:**

**PROGRAM TITLE**

Organization of the Army  
Part IV  
The Division

---

**POI SCOPE:** Teach the student the infantry, armored, mechanized and airborne divisions; their units and missions; where organic aviation is assigned; the organization charts; and the chain of command.

---

## INSTRUCTOR REFERENCES:

Common Subjects and Reference Data for Army Aviation in the Field Army, January 1968.  
USACGSC, RB 61-1, Vol 1, Reference Book the Division, 15 July 1967.

---

**PREPARED BY:**

**DATE:**

January 1968

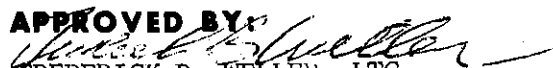
TFPL

---

**REVISED BY:**

**DATE:**

**APPROVED BY:**

  
FREDERICK B. WELLER, LTC  
Chief, TP&A

**DATE:**

May 1968

# TABLE OF CONTENTS

**PROGRAMED TEXT**  
**FILE NO:**

**PROGRAM TITLE:**  
Organization of the Army  
Part IV

CONTENTS	PAGE NUMBER
1. PREFACE _____	iii
2. PERFORMANCE OBJECTIVES _____	1
3. PROGRAM _____	2
a. _____	
b. _____	
c. _____	
d. _____	
e. _____	
4. SELF EVALUATION EXERCISE _____	13
5. ANSWERS TO SELF EVALUATION EXERCISE _____	15
6. ITEMS TO BE ISSUED WITH PROGRAM _____	
7.   Organization of the Army Handout _____	16
8. _____	
9. _____	
10. _____	

## PREFACE

This self-teaching course in Army organization is designed to acquaint you with the chain of command from the President as Commander in Chief down through division organization.

The instructional material in this text is Part IV of a five part course. You will receive each part in the proper sequence, and will be able to develop the organization starting from the top levels. The five parts are as follows:

- Part I. National Defense Organization.
- Part II. The Type Field Army.
- Part III. The Type Corps.
- Part IV. The Division.
- Part V. The Airmobile Division.

### ORGANIZATION OF TEXT

This text consists of frames, panels, and self evaluation exercise. A frame presents a teaching point which usually requires an answer to a specific problem. A panel is an illustration or other information needed to solve the problems. The self evaluation exercise is designed to allow you to test yourself on the material learned in the text.

The problems in some frames require you to write an answer. In others, you select a correct choice. Still other problems have more than one correct choice. A few frames are information frames and do not need an answer.

### HOW TO WORK THE TEXT

1. Start with frame 1 of Part IV. Answer it correctly by marking the correct choice in pencil.
2. Turn the page. The correct answer to frame 1 is printed above frame 2. If your choice was incorrect, turn back to frame 1 to re-study the frame and change your answer to the correct one.
3. Answer frame 2 as required and continue on through the program.

### SELF EVALUATION EXERCISE

When you have finished all the frames, turn to the self evaluation exercise located at the end of the text. Work all of the problems then compare your answers with the answer sheet provided. To receive the full benefit of this exercise do not read the answers before answering all questions. Should you not be able to answer a problem, turn back to the text and study the part pertaining to that question.

## PERFORMANCE OBJECTIVES

Upon completion of this program you will be able to:

1. Recognize the units in a division having aviation capabilities.
2. Locate the assignments a warrant officer aviator may have at division level.
3. Read and interpret the organizational charts.
4. Trace the chain of command from a given position.
5. Determine the location of the division in the Army organization.
6. Select the type of divisions in the Army organization.

ORGANIZATION OF THE ARMY  
PART IV

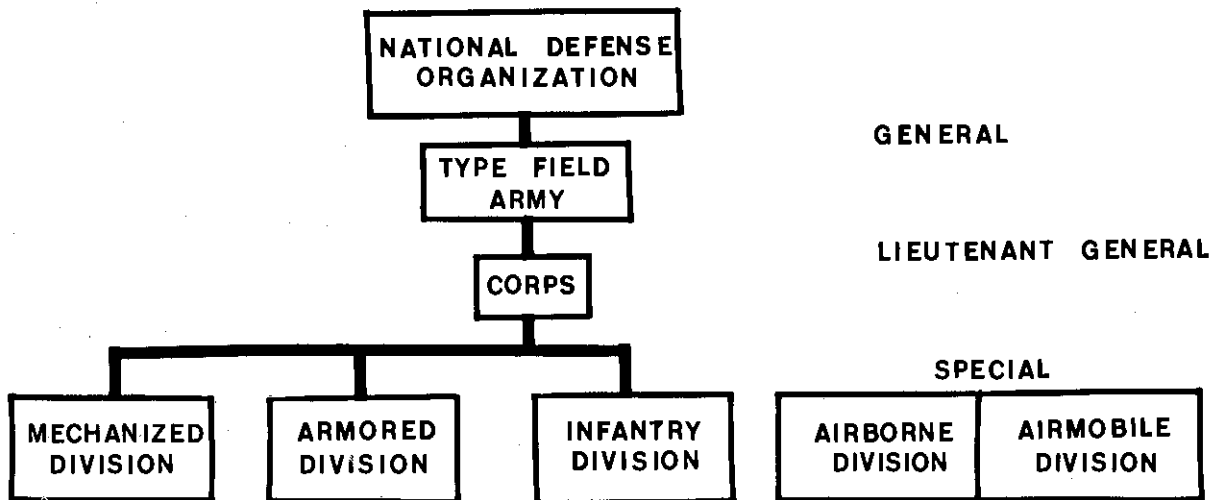
THE DIVISION

FRAME 1

In your last program you covered the corps. You know that the corps has the division as its primary maneuver element. There are five types of divisions:

1. Infantry
2. Airborne
3. Armored
4. Mechanized Infantry: commonly called mechanized
5. Airmobile

This program will cover the first four together, leaving the airmobile to be covered separately.



The division has the mission of destroying enemy military forces and controlling land areas.

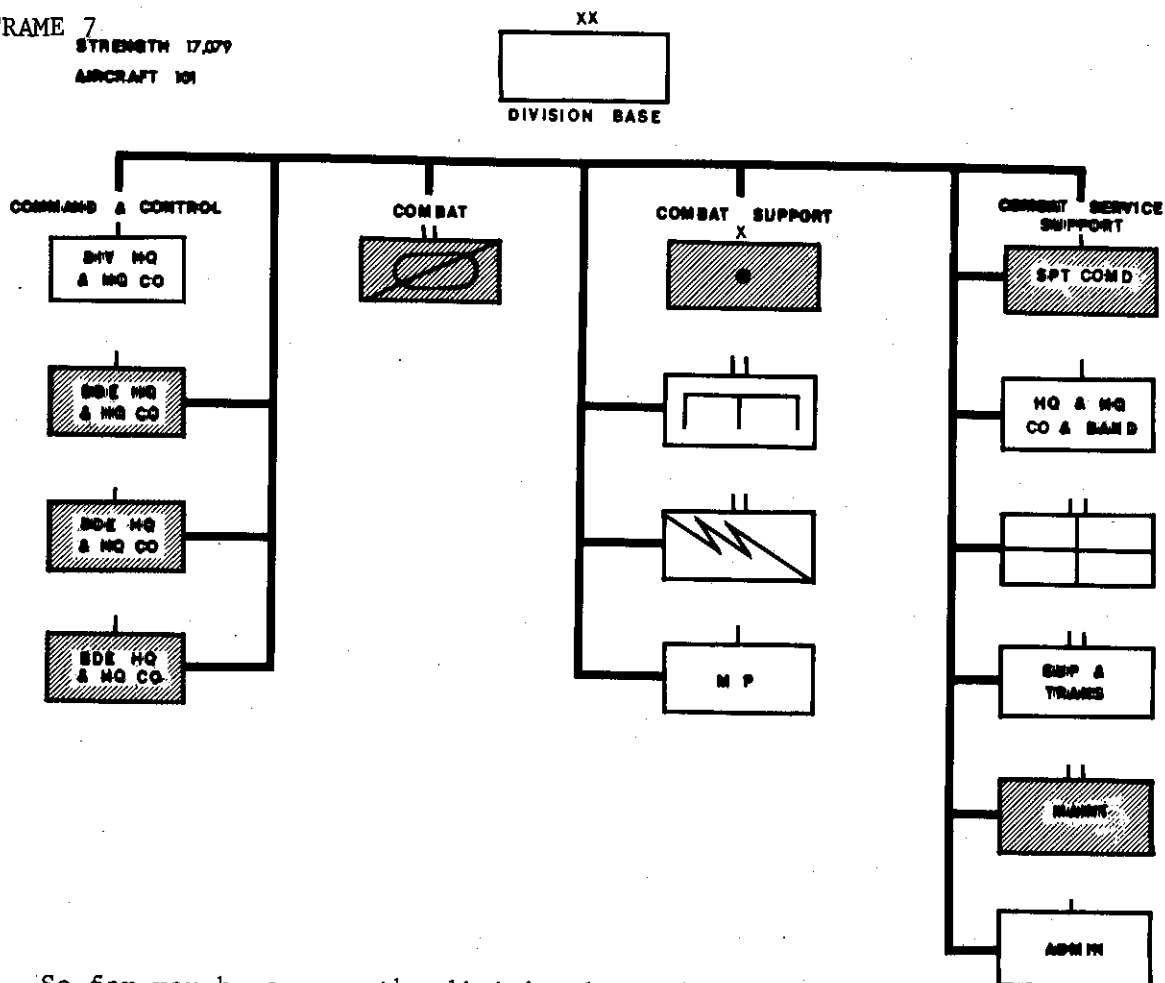
A division is normally commanded by:

- a. Major General (2 star)
- b. Brigadier General (1 star)
- c. Colonel (eagle)
- d. Lieutenant General (3 star)

TURN TO FRAME 2 PAGE 4

Answer: 2.

FRAME 7  
STRENGTH 17,079  
AIRCRAFT 101



So far you have seen the division base that is common to the four divisions; armored, infantry, mechanized, and airborne. These divisions differ in the type of battalions that make up the brigades. The other difference that you will be required to remember is that the infantry and airborne division have, in the combat support elements, an aviation battalion.

Example: An infantry division will have infantry battalions in the brigades, and an aviation battalion in the combat support units.

Circle the types of divisions that have an organic aviation battalion.

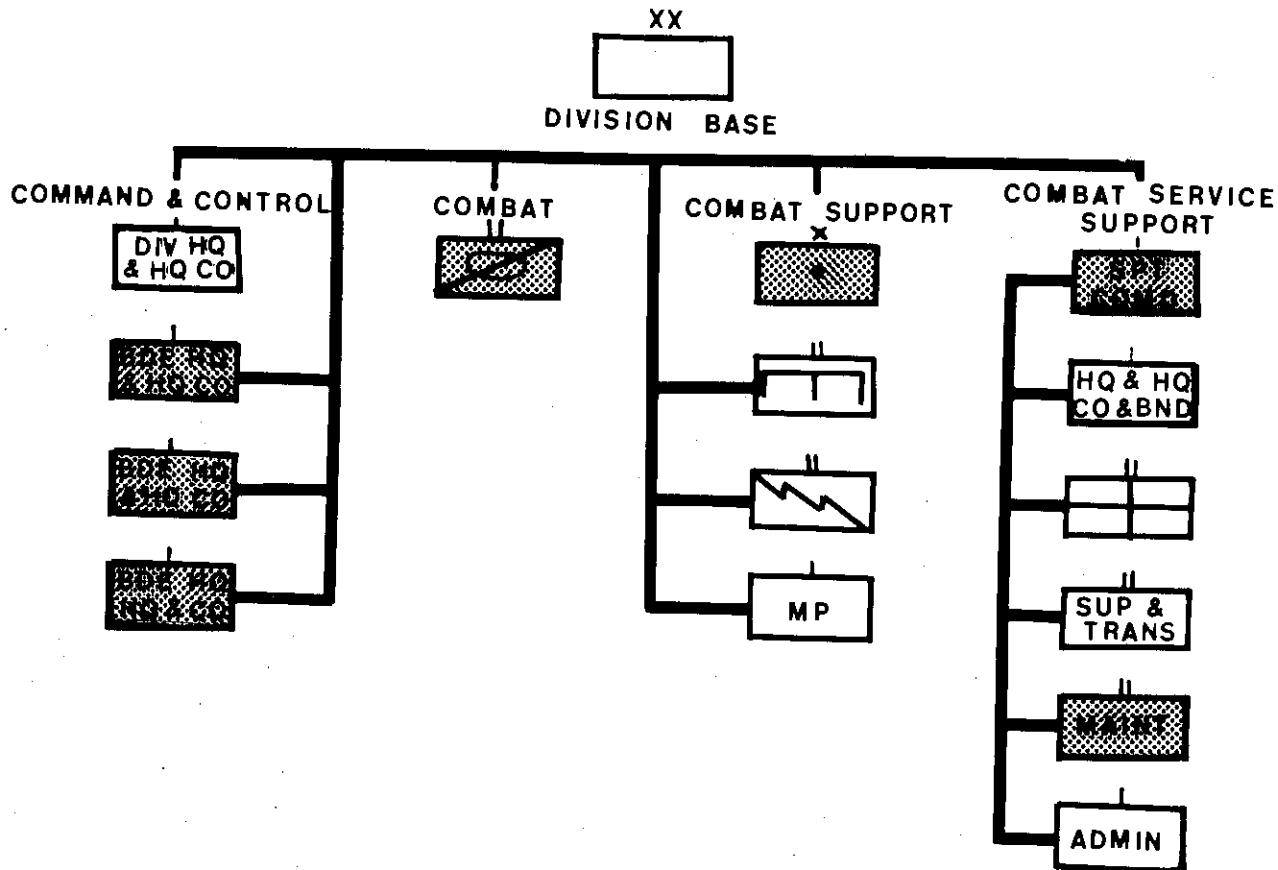
1. Mechanized
2. Armored
3. Infantry
4. Airborne

\_\_\_\_\_

FRAME 2

Divisions have a common base consisting of:

1. Combat control units
2. Combat units
3. Combat support units
4. Combat service support units



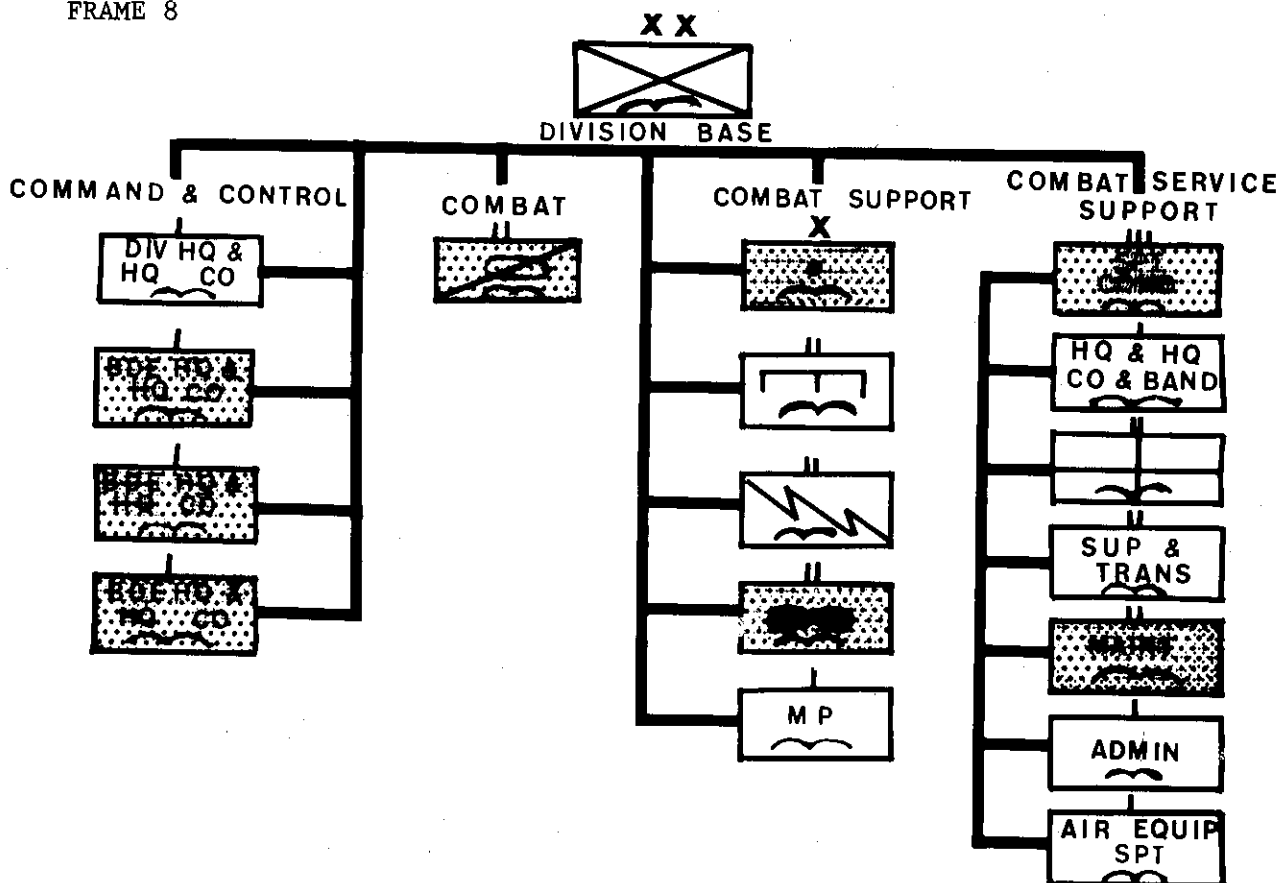
Which of the following is the only combat unit in the division base?

- a. Brigade headquarters
- ☒ b. Armored cavalry squadron
- c. Military police company
- d. Armored cavalry regiment

Remember that the brigade headquarters and headquarters companies are combat control units. The brigade is the maneuver element for the division.



FRAME 8



Here you see the organizational chart of a division. What type division is it? (Select correct response)

- a. Airborne
- b. Mechanized
- c. Armored

WHY?

- a. There are 3 infantry brigades.
- b. The medical and maintenance battalions are located in the combat service support command.
- c. There is an aviation battalion and an air equipment support company in the division base.

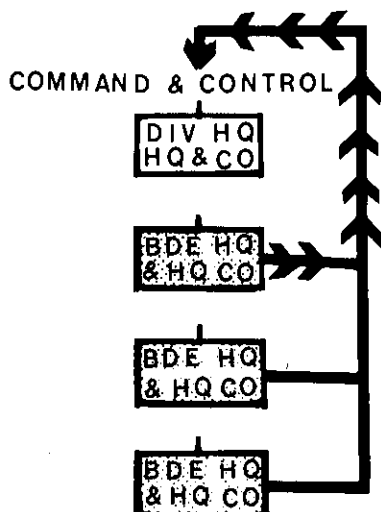
Answer: b.

---

FRAME 3

The division headquarters company provides administrative support for the division headquarters, which is composed of the commander and his staff.

The division base has three brigade headquarters that provide command and control of operations for the division and attached units.



4 light observation helicopters  
in each brigade.

The brigade normally commands the tactical operations of two to five attached combat battalions.

Who is the brigade commander responsible to?

Division Co.

What is the maneuver element for the brigades?

battalion

Answer: a, c

---

FRAME 9

In order to give the mechanized and armored division organic aircraft, 4 light observation helicopters and 2 medium helicopters have been added to the division Hq and Hq company.

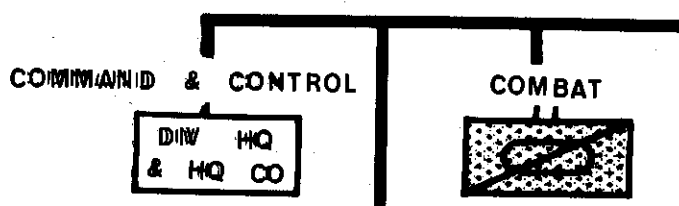
Select the most probable reason the mechanized and armored divisions do not have an aviation battalion.

- A. The mechanized and armored division have an organic means of movement with tanks and armored personnel carriers.
- B. The mechanized and armored divisions act as a covering force for the battalions.

Answer: Division commander, battalion

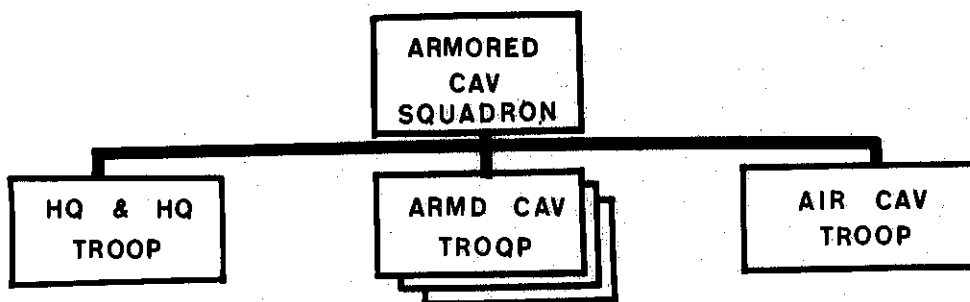
FRAME 4

The division armored cavalry squadron is a combat unit which can protect the flanks of the division, provide security, collect and report information of intelligence value, act as a covering force, provide rear area security and conduct independent operations when suitably reinforced.



9 observation helicopters  
17 lift helicopters  
Officers 45  
Warrants 36

The armored cavalry squadron commander is responsible to: Division Co.



G-12  
W-33

Who is the air cavalry troop commander responsible to: Squadron Co.

Answer: A.

---

FRAME 10

MATCH THE FOLLOWING

- |                                      |          |                                  |
|--------------------------------------|----------|----------------------------------|
| 1. Infantry, airborne division       | <u>4</u> | A. Air cavalry troop             |
| 2. Armored, mechanized division      | <u>6</u> | B. Armored cavalry squadron      |
| 3. Major General                     | <u>5</u> | C. Combat service support        |
| 4. One in armored cavalry squadron   | <u>2</u> | D. No organic aviation battalion |
| 5. Provides services to the brigades | <u>3</u> | E. Division commander            |
| 6. Protects division area            | <u>1</u> | F. Organic aviation battalion    |

Answer: Division commander, Squadron commander

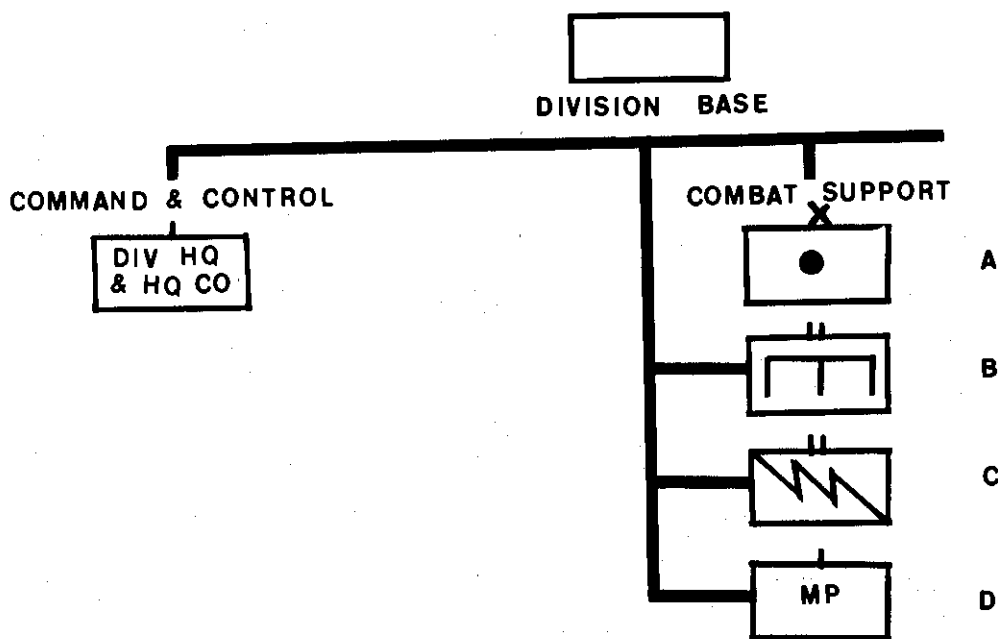
FRAME 5

The division is also supplied with combat support elements. The division artillery brigade provides combat support to the division by accurate delivery of nuclear and non-nuclear artillery.

The engineer battalion builds and maintains roads, bridges, culverts, camouflage, fortification, and air landing facilities for the division.

The division signal battalion provides signal communication support such as: operation of the message center, messenger service between division and brigade, and photographic service.

The MP company provides a provost or traffic control post, operates a prisoner of war camp, and investigates crime.



Which of the above would you call upon to perform the following missions if you were division commander:

1. Provide communication to the brigade headquarters. C
2. Remove a obstacle in the road. B
3. Fire on a suspected enemy location. A
4. Secure a prisoner of war. D

What combat support unit has organic aviation? ARTILLERY

FRAME 10

Answer: 1. F., 2. D., 3. E., 4. A., 5. C., 6. B.

---

NOW TURN THE PAGE AND COMPLETE THE SELF EVALUATION EXERCISE.

- Answer: 1. C  
2. B  
3. A  
4. D

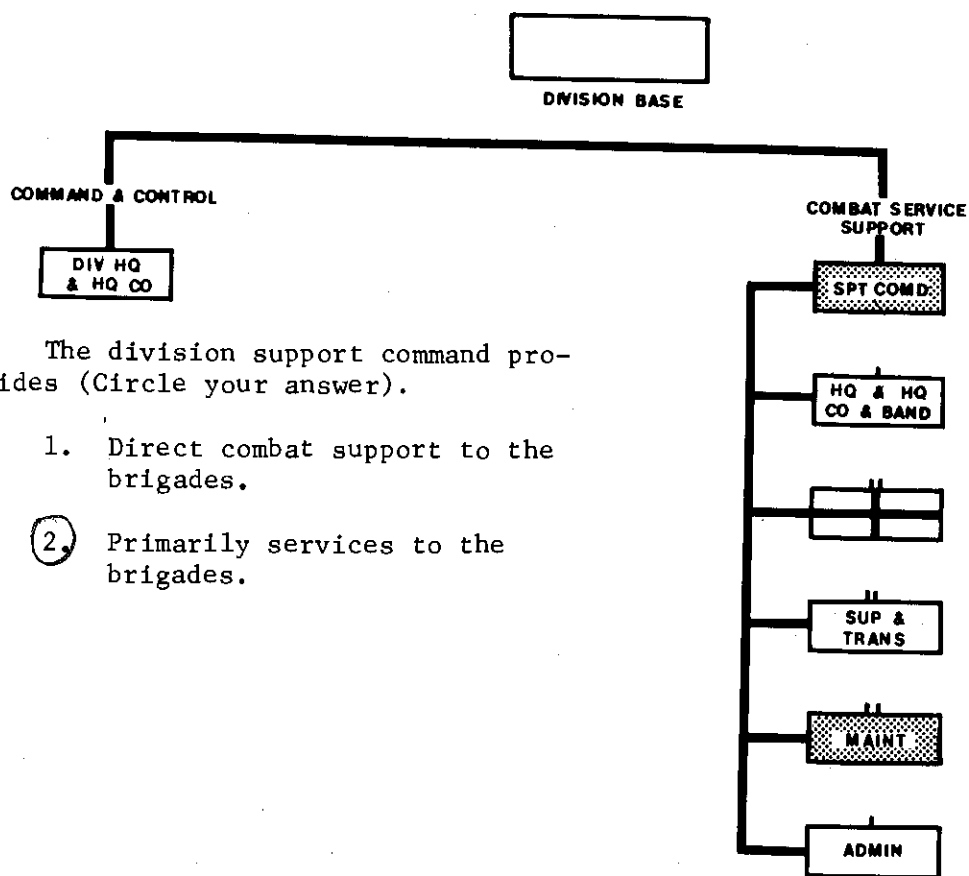
Division artillery

---

FRAME 6

The division support command provides combat service support to the division to include:

1. Supplies, including establishment of mobile distribution points.
2. Division level medical service.
3. Maintenance.
4. Personnel administration.



The division support command provides (Circle your answer).

1. Direct combat support to the brigades.
2. Primarily services to the brigades.

STOP. RETURN TO FRAME 7 PAGE 3



## SELF EVALUATION EXERCISE

### DIVISION

1. Normally which of the following units will be the next unit in the army organization under the Division.

- ☐ A. Corps. 1
- ☐ B. Battalion. 3
- ☐ C. Squadron. 2
- ☒ D. Brigade. 4

2. The Division base has:

- ☐ A. 5 Brigades.
- ☐ B. 2 Brigades.
- ☒ C. 3 Brigades.
- ☐ D. 6 Brigades.

3. What is the next unit under brigade in Army organization?

- ☒ A. Battalions.
- ☐ B. Companies.
- ☐ C. Squads.
- ☐ D. Platoons.

4. Which of the following is the command and control unit for the Division.

- ☐ A. Division artillery.
- ☐ B. Engineer battalion.
- ☒ C. Headquarters and headquarters company.
- ☐ D. Armored cavalry squadron.

5. Which of the following is a combat support unit for the Division.

- ☒ A. Division artillery.
- ☐ B. PIO.
- ☐ C. Headquarters and headquarters company.
- ☐ D. Armored cavalry squadron.

6. Which of the following Divisions have an aviation battalion organic to them.

- ☐ A. Armored and mechanized.
- ☒ B. Infantry and airborne.
- ☐ C. Armored and airborne.
- ☐ D. Armored and infantry.

7. How many types of Divisions are there?

- ☐ A. 1
- ☐ B. 2
- ☐ C. 3
- ☒ D. 5

## ANSWERS TO SELF EVALUATION EXERCISE

1. D.
2. C.
3. A.
4. C.
5. A.
6. B.
7. D.

- How many types of...
- A. 1
  - B. 2
  - C. 3
  - D. 4

# ORGANIZATION OF THE ARMY HANDOUT

## DEFINITIONS

1. Logistics - the branch of military science having to do with moving, supplying and quartering troops.
2. Organic - In organization that which is a part of, or inherent to a unit.
3. Echelon - (ladder rung) A step like formation of units of troops.

## SIZE INDICATION

TO SHOW THE SIZE OF A SPECIFIC UNIT OR ACTIVITY, THE APPROPRIATE SIZE INDICATION IS PLACED ON TOP OF THE BASIC SYMBOL.

SQUAD	•
SECTION OR UNIT LARGER THAN SQUAD BUT SMALLER THAN A PLATOON.	• •
PLATOON OR DETACHMENT	• • •
COMPANY, BATTERY, OR TROOP	I
BATTALION OR SQUADRON	II
GROUP OR REGIMENT	III
BRIGADE OR EQUIVALENT COMMAND	X
DIVISION	XX
CORPS	XXX
ARMY	XXXX
ARMY GROUP	XXXXX

EXAMPLES:



A PLATOON



A COMPANY  
OBSERVATION POST



A CORPS  
HEADQUARTERS

## ARM OR BRANCH OF SERVICE

Arm or Branch	Symbol
Airborne	
Armor	
Army Security Agency	
Artillery	
Aviation	
Chemical (CBR)	
Coast Artillery (Foreign Armies Only)	
Cavalry (Reconnaissance)	
Engineer	
Finance (Pay)	
Infantry	
Medical	
Military Intelligence	
Military Government or Civil Affairs	
Military Police	
Ordnance	
Postal	
Quartermaster	
Signal	
Transportation	
Veterinary	

L2383 Army-Ft. Sill, Okla.

Part # 1 50% test

5 types of divisions

support units have organic action at base level

shaded area has organic action in graphs.

symbols - know