



Find one thing wrong with this picture.



Good God lets eat



Yessir, yessir, yessir...



Speaking of polution....





Comrades at arms.



Is that how it really happened art?



Some body wake moose up.





Comrades at arms.



Is that how it really happened art?



Some body wake moose up.





CPT BULLET PERRY



LAWRENCE OF PLANTATION



CPT WIERD CLONTZ



CPT HUCK BROWN



CPT MOOSE ROBISON



CPT Uncle BERNIE
BERNATH



CPT Big Red
McCLINTOCK



CPT SPICK BENNETT



CPT GAF JETTER



CPT LYONS
Dirty Old Man



CPT EHLERS
Buffalo Chips



CPT BULLET PERRY



LAWRENCE OF PLANTATION



CPT WIERD CLONTZ



CPT BUCK BROWN



CPT MOOSE ROBISON



CPT Uncle BERNIE
BERNATH



CPT Big Red
McCLINTOCK



CPT SPICK BENNETT



CPT GAF JETTER



CPT LYONS
Dirty Old Man



CPT EHLERS
Buffalo Chips



CPT KC CHURN



CPT THUMPER CHOMA



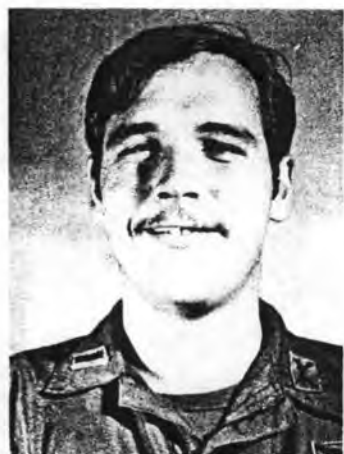
CPT ED MCCAHN BAKER



CPT BILLY CAUSEY



CPT AL SMITH



1LT SHEP SNOW



1LT TILT GENTRY



CW2 KANITE KNIGHT



CW2 TOM SLICK STOCKTON



CW2 FRITO LYNN



CW2 POPS HOULT



CW2 CAUBLE



CW2 RUSS TONS



CW2 GALLOP



CW2 MOLEA



CW2 JOHN HEN



CPT KC CHUNN



CPT THUMPER CHOMA



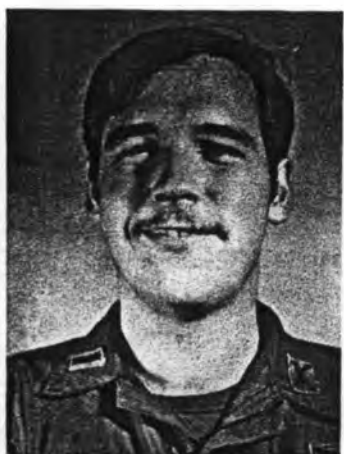
CPT ED HOCMAHN BAKER



CPT BILLY CAUSEY



CPT AL SMITH



1LT SHEP SNOW



1LT TILT GENTRY



CW2 KANTE KNIGHT



2 TOM SLICK STOCKTON



CW2 FRITO LYNN



CW2 POPS HOULT



CW2 CAUBLE





CPT KC CHUNN



CPT THUMPER CHOMA



CPT ED MOGMANN BAKER



CPT BILLY CAUSEY



CPT AL SMITH



1LT SHEP SNOW



1LT TILT GENTRY



CW2 KANITE KNIGHT



CW2 TOM SLICK STOCKTON



CW2 FRITO LYNN



CW2 POPS HOULT



CW2 CAUBLE





CPT KC CHUNN



CPT THUMPER CHOMA



CPT ED MOCMAHN BAKER



CPT BILLY CAUSEY



CPT AL SMITH



1LT SHEP SNOW



1LT TILT GENTRY



CW2 KANITE KNIGHT



CW2 TOM SLICK STOCKTON



CW2 FRITO LYNN



CW2 POPS HOULT



CW2 CAUBLE





CW2 CHUCK WINDLER



WO1 MAGILLA McINTYRE



WO1 RICKENBACKER



WO1 FESTUS BASKETT



WO1 ELVIS PRESLEY



WO1 BUFORD WHITE



WO1 MAC McCOY



1LT EASY RIEDER



CPT MACLACHLAN



CW2 RON TUSKI



CW2 MARISCHEN



CPT ALAN M. RUSSO





CW2 CHUCK WINDLER



WO1 MAGILLA McINTYRE



WO1 RICKENBACKER



WO1 FESTUS BASKETT



WO1 ELVIS PRESLEY



WO1 BUFORD WHITE



WO1 MAC MCCOY



1LT EASY RIEDER



CPT MACLACHLAN



CW2 RON TUSKI



CW2 MARISCHEN



CPT ALAN M. RUSSO



COMMAND HISTORY

On 30 June 1971, at Camp Martin Cox, (Bearcat), Republic of Vietnam, Company B, 228th Assault Support Helicopter Battalion was redesignated as the 362nd Aviation Company (ASH), and assigned to the 229th Assault Helicopter Battalion, 3rd Brigade (Separate), 1st Cavalry Division (Airmobile). From 30 June 1971, until 6 October 1971, the 362nd Aviation Company (ASH), proudly supported all elements of the 3rd Brigade (Separate), 1st Cavalry Division (AM), from its home base at Camp Martin Cox (Bearcat), Republic of Vietnam. On 6 October 1971, under the Command of Major Carle E. Dunn, the 362nd picked-up bag and baggage and moved to Phu Loi, Republic of Vietnam. This move was a significant achievement and a definite millstone for the 362nd Aviation Company (ASH) in that the entire move, nickname COURAGE, was completed in three and one-half days, and during which time, the 362nd Aviation Company (ASH), remained 100% combat operational, full-filling all commitments, and flying in excess of 1000 direct combat support hours. Team-work was the name of the game, and the word Excellent was not our goal but our standard. On 15 October 1971, the 362nd Aviation Company (ASH), officially changed its radio call-sign to "UNITED" and began wearing the unit patch of the "United Flying Ducks". The second significant achievement came about during Christmas of 1971, when the Commanding General, BG James F. Hamlet, tasked the 362nd Aviation Company (ASH), with "Operations Jingle Bell", a mission dedicated solely to the First Team Sky Troopers. The 362nd Aviation Company accepted the surge in flying hours without a reduction in operational aircraft and without reducing combat commitments to the sky Troopers located at remote Fire Support Bases. This willingness to spend the holiday season in service and support of others in typically United. January of 1972, brought about a renewed dedication on the part of the 362nd Aviation Company (ASH) to continue its high standards. The 362nd Aviation Company (ASH) is looking forward to expending its vital role in Vietnam by increasing the size of the unit in terms of men and CH-47 helicopters. With many units standing-down, the 1st Cavalry can proudly say: "First In, Last Out".



Major CARLE E. DUNN

Commanding Officer



CPT WRIGHT



MAJ CARLE E. DUNN



CPT BALL



CAPT BURROW



CPT CRUMP



CPT DEVER



CPT DRANIKOSKI



CAPT ELDRIDGE



CPT TARPLEY



CPT WALLACE



CPT WAINWRIGHT



1LT DENBESTE



1LT CONNOLLY



1LT FAIRCLOTH



1LT HARRELL



1 LT NELSON



1 LT TOBIN



CW2 TESCHLER



CW2 GREER



WO1 COWAN



WO1 GOIN



WO1 GOTTMAN



WO1 LONGMAN



WO1 McLEMORE



WO1 MEEDS





Capt. JERRY D. WRIGHT Executive Officer

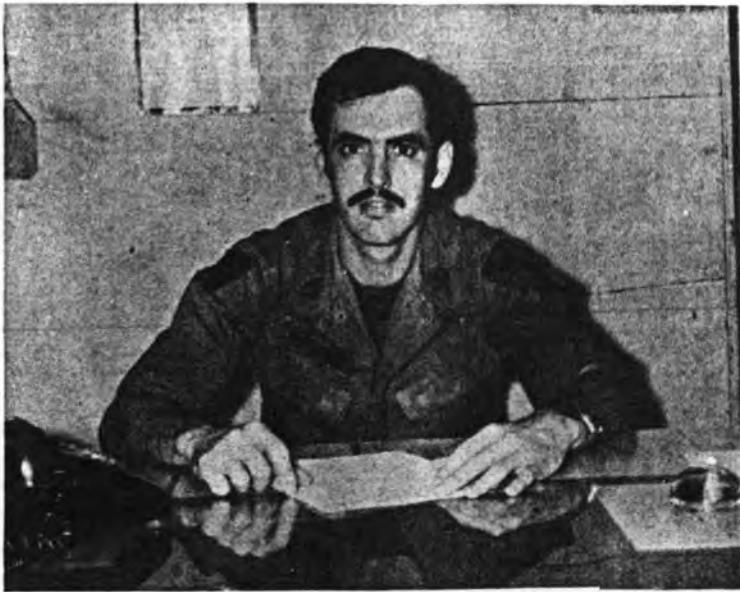


CPT. TROY E. BURROW
Administration Officer



WO1 DENNIS J. LONGMAN Public Relations Officer

OPERATIONS



CPT TOMMY R. WALLACE-
Operations Officer



1LT EDWIN J. DEN BESTE Assistant Opns Officer



CW2 GREER Safety Officer



CW2 JOHN N. PARRY Assistant Safety officer



SFC TOWNSEND Operation SGT



SSG GARCIA Assistant Operation SGT & Chief RTO



CPT LARRY E BALL Supply Officer



SP/5 TERRY Supply SGT



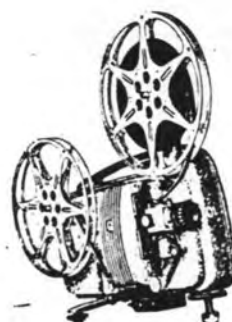
CW2 HARMON Property Book Officer



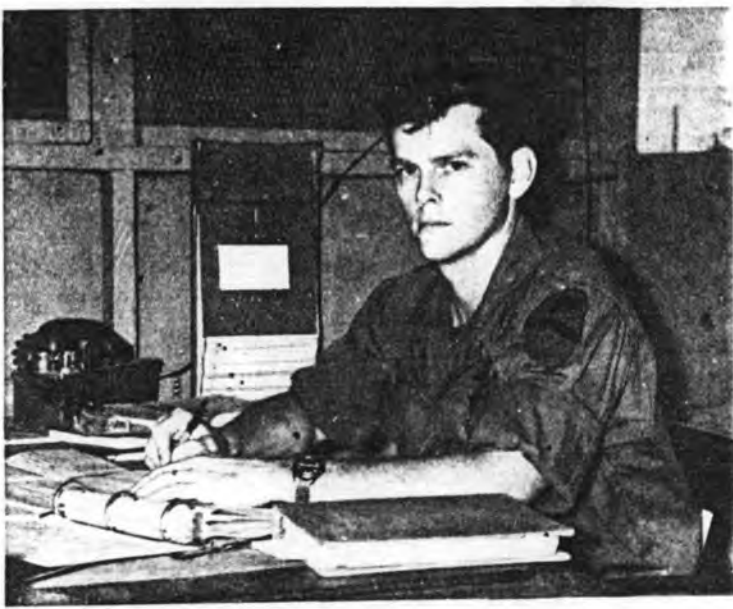
PFC HORN Arms Room



You name it we ain't got it



MOTOR POOL



CPT BARRY TOMLIN Motor Officer



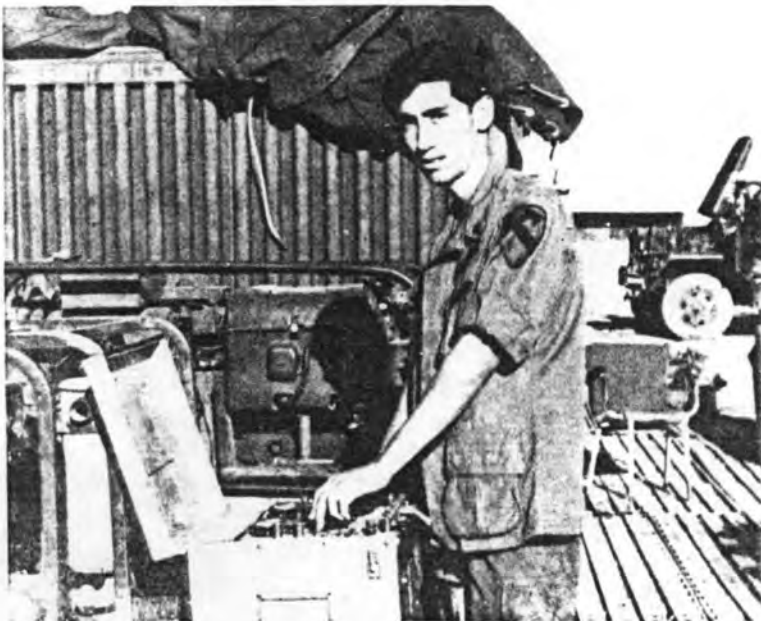
SGT DONALD R TAYLOR
Motor SGT



PFC KNOX Dispatcher



SP4 KLOSS P11 Clerk



RYAN Generator Operator



MAINTENANCE



CPT DAVID Mc CLINTOC Maint Officer



CPT TIMOTHY G. KELLY
Assistant Maint Officer



CW2 GEORGE PERDUE
Maint Technician



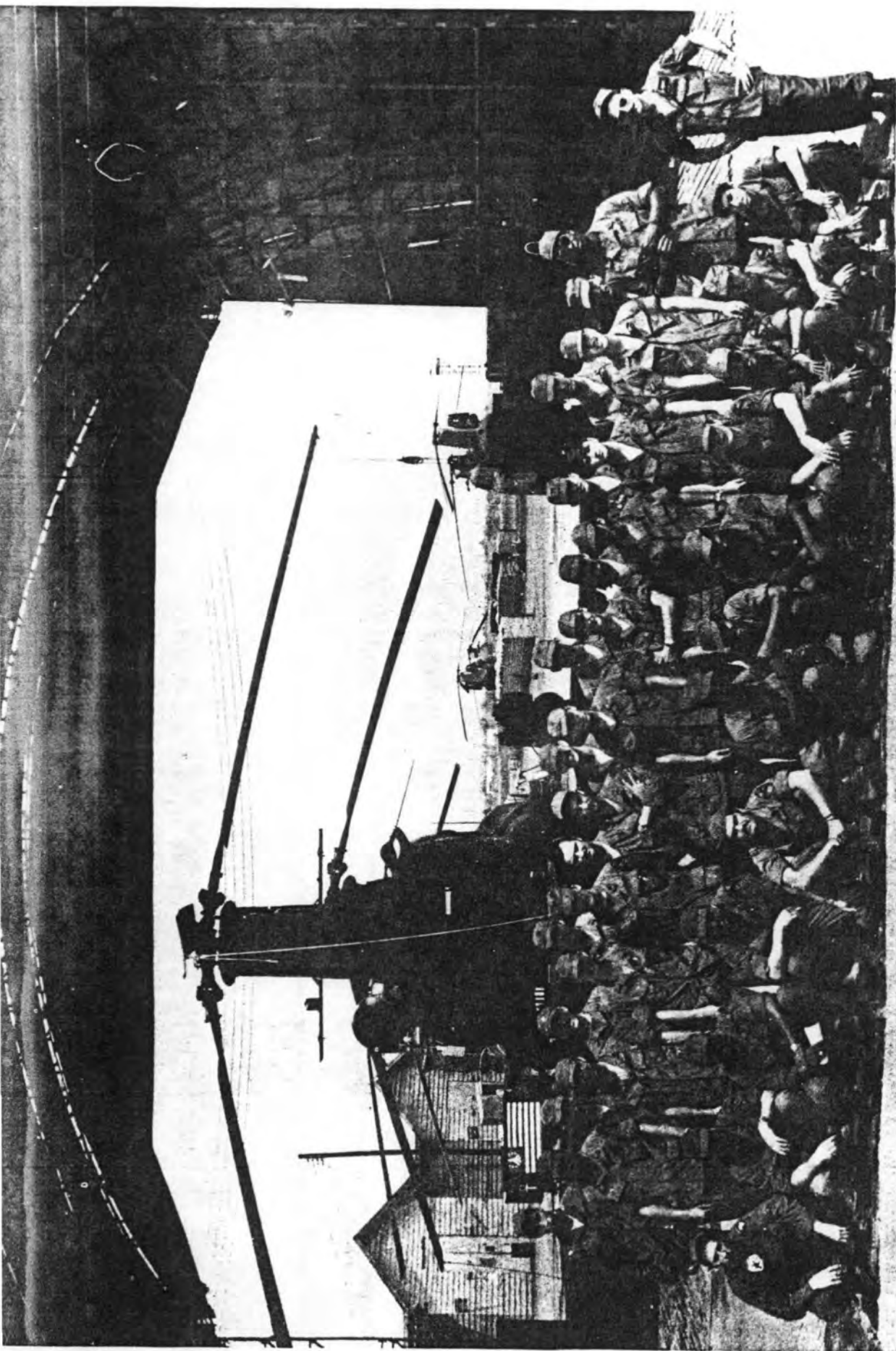
CPT. JIM GARTLEV
Maint Officer



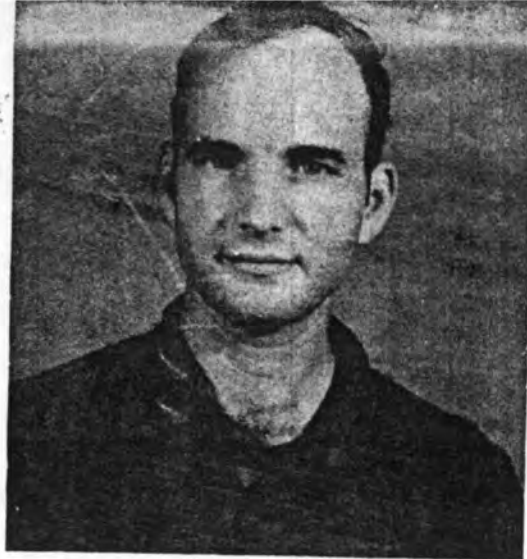
CW2 GARRY ARMENTROUT



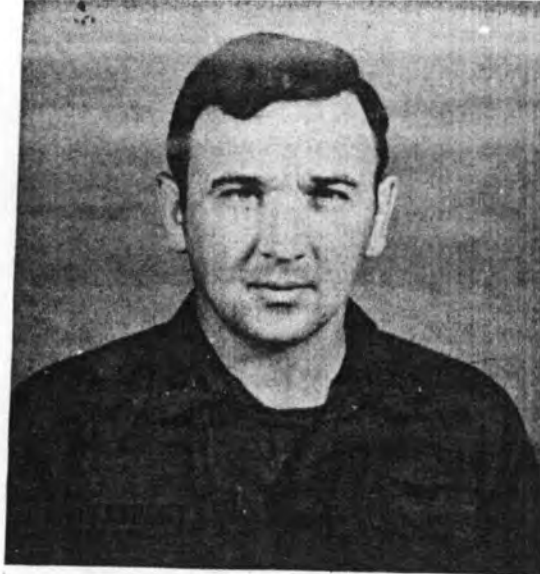
Mr. JACK MARTINEZ JR.



MAINTENANCE PLATOON



CPT CRUMP 1st Plt Cdr



CPT TARPLEY 2nd Plt Cdr



I don't know who they are
but look intelligent



FLIGHT PLATOON

FLIGHT
PLATOON



Arm the hook set me up
and watch the beep



Cpt WALLACE said I could



Crew 081



Crew 129



No It's your turn



Hard core



Last one to the club, buys



$\frac{1}{2}$ crew 157



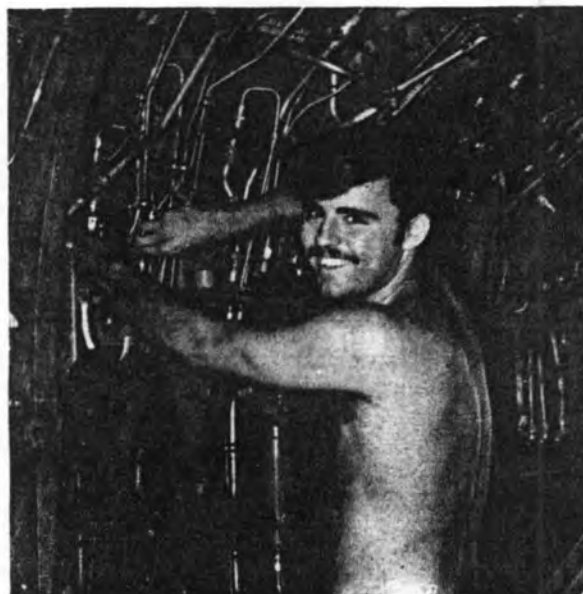
This is a hell of a way
to spend a honeymoon



Hi mom



Crew 157



Rebel 016



Chief Gunner
Anybody there



Rebel 016



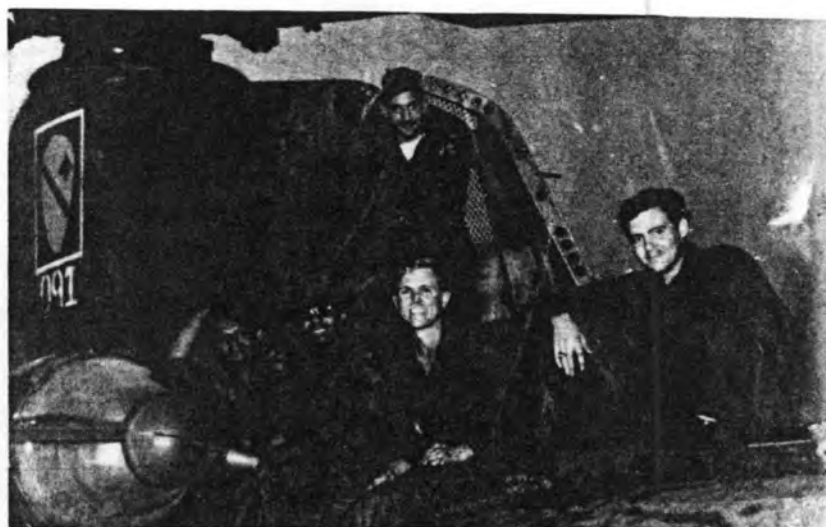
Crew 038



Crew 994



Test Pilots



Crew 091



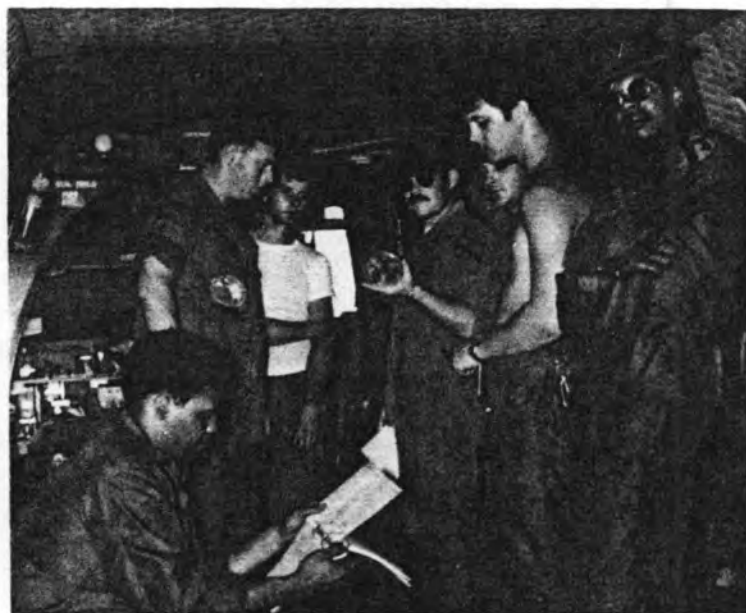
Crew 091



Fe Mustin - 157



Crew 143



I don't know where it goes either



Crew 016



Crew 129



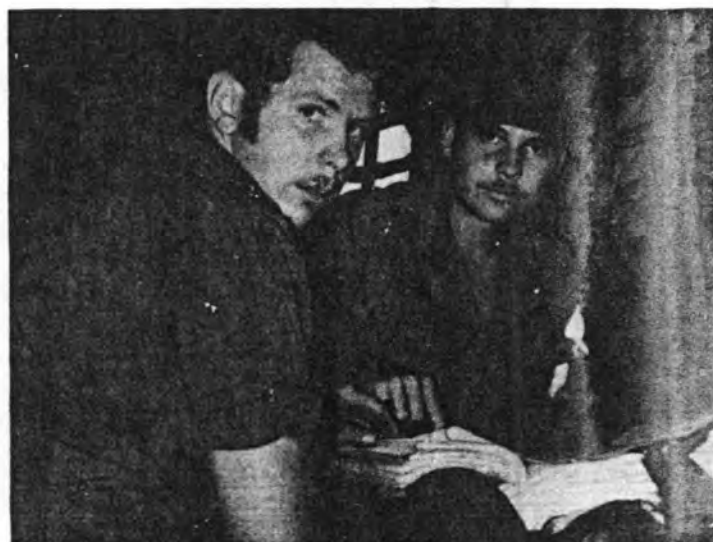
Don't feed the bear



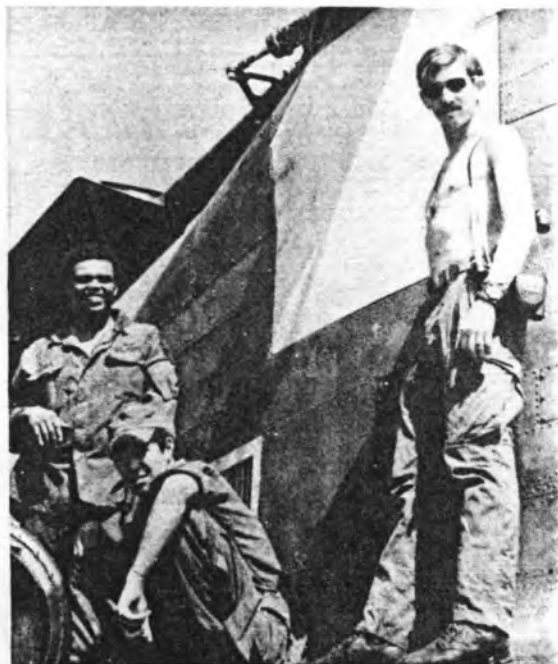
anybody seen my crew



Sure I know what I'm doing



Dirty pictures what else



The start rope broke



This picture is for my wire
so make it goof



You called