

- 20608 *Vân Canh district, VC district corresponding roughly to western Tuy Phước district*
- 20603 *Vĩnh Thạnh district, VC district corresponding roughly to northern Bình Khê district*
- 20700 Kontum (Kon Tum; Công Tum) province
- 20901 *Cheo Reo district, VC district covering part of Phú Thiện district in Phú Bổn province*
- 20701 Chuong Nghĩa district
- 20702 Dak-Sút (Daksut; Đắc Sút) district
- 20703 Dak-To (Dakto; Đắc Tô) district
- 20704 Kon-Tum (Kontum) district
- 20705 Tou Morong (Tu Mơ Rông) district
- 20800 Pleiku (Pơ Lây Cu) province (*VC Gia Lai province*)
- 20801 Lệ Thanh district
- 20802 Lệ Trung district
- 20803 Phú Nhơn district
- 20900 Phú Bổn province (*Included in VC Daklak and Kontum provinces.*)
- 20901 Phú Thiện district
- 20902 Phú Túc district
- 20903 Thuận Mãn district

- 21000 Phú Yên province
- 21001 Đông Xuân district
  - 21002 Hiếu Xương district
  - 21003 *Miền Tây, VC district corresponding to Phú Hòa district*
  - 21004 *and the western parts of Sơn Hòa and Hiếu Xương*
  - 21002 *districts*
  - 21003 Phú Đức district
  - 21004 Sơn Hòa district
  - 21005 Sông Cầu district
  - 21006 Tuy An district
  - 21007 Tuy Hòa district (*VC Tuy Hòa 2 district corresponds to GVN Tuy Hòa district; Tuy Hòa 1 district covers the eastern part of Hiếu Xương district [code 21002].*)
- 21100 Khánh Hòa province
- 21104 *Bắc Ninh district, VC district covering northern Ninh*
  - 21103 *Hòa and northeastern Khánh Dương districts*
  - 21101 Cam Lâm district
  - 21101 *Cam Ranh district, VC district covering part of Cam Lâm district and the autonomous municipality of Cam Ranh*
  - 21102 Diên Khánh district
  - 21103 Khánh Dương district
  - 21102 *Khánh Sơn district, VC district within Diên Khánh district*
  - 21104 *Nam Ninh district, VC district covering southern Ninh Hòa district*
  - 21104 Ninh Hòa district
  - 21105 Vạn Ninh district

- 21102 *Vĩnh Khánh district, VC district within Diên Khánh district*
- 21101 *Vĩnh Sơn district, VC district covering most of Cam Lâm district*
- 21106 *Vĩnh Xương district*
- 21200 *Ninh Thuận province*
  - 21201 *An Phước district (VC Đồng Hà district)*
  - 21202 *Bac Ai (Bac Ai Đông) district, VC district covering*
  - 21203 *Bửu Sơn and most of Dư Long districts*
  - 21202 *Bửu Sơn district*
  - 21201 *Đồng Hà district, VC name for An Phước district*
  - 21203 *Dư Long district*
  - 21204 *Thanh Hải district*
  - 21202 *Thuận Bắc district, VC district covering northern*
  - 21204 *Thanh Hải district and part of Bửu Sơn district*
  - 21204 *Thuận Nam district, VC district covering southern*
  - 21201 *Thanh Hải and adjacent An Phước districts*
- 21300 *Darlac province (VC Darlak or Đắk Lắk province, which includes most of GVN Phú Bổn province. The VC districts are also numbered H1-H9. H1-H7 are under B-3; H8-H9 are under B-5.)*
  - 21301 *Ban Mê Thuật (Banmêthuôt) district*
  - 21302 *Buôn Hồ district*
  - 21303 *Đắc Song district, VC district covering Lạc Thiện and*
  - 21304 *Phước An districts*
  - 21303 *Lạc Thiện district (H8)*
  - 21304 *Phước An district (H9)*

21400. Quảng Đức province
- 21401 Đức Lập district (Formerly called Đức Sơn district.)
  - 21502 Đức Trọng district, VC district considered by the GVN as part of Tuyên Đức province
  - 21402 Khiêm Đức district
  - 21403 Kiến Đức district
- 21500 Tuyên Đức province (Tuyên Đức is divided by the VC into three areas [vùng] lettered A, B and C.)
- 21501 Đơn Dương district
  - 21502 Đức Trọng district (Considered by the VC as part of Quảng Đức province.)
  - 21503 Lạc Dương district
- 21600 Lâm Đồng province
- 21601 Bảo Lộc district
  - 21602 Di Linh district
- 21700 Bình Thuận province (Northern Bình Thuận is sometimes referred to by the VC and Bắc Bình province.)
- 21705 Bắc Sơn district, VC district covering Phan Lý Châm district
  - 21701 Đông Hải district, VC name for Hải Long district
  - 21704 Đông Lâm district, VC district covering Hòa Đa and
  - 21707 coastal Tuy Phong districts
  - 21701 Hải Long district
  - 21702 Hải Ninh district
  - 21703 Hàm Thuận district (VC Hàm Thuận district includes most of Thiện Giáo district and enclaves from Phan Lý Châm district.)

- 21704 Hòa Đa district
- 21705 Phan Lý Cham district *(Parts of this district are enclaves wholly within Thiện Giáo and Hòa Đa districts.)*
- 21703 *Phan Thiết district, VC district covering parts of Ham*
- 21706 *Thuận and Thiện Giáo district adjacent to Phan Thiết City*
- 21706 Thiện Giáo district
- 21707 Tuy Phong district
- 31800 Bình Tuy province *(Included in VC Bình Thuận province.)*
- 31801 Hàm Tân district
- 31802 Tân Linh district
- 31803 Hoài Đức district *(Reestablished by decree no. 1681 on 30 September 1965.)*
- 31900 Phước Long province *(VC also use name Tiên Giang)*
- 31901 Bồ Đức district
- 31902 Đôn Luân district
- 31903 Đức Phong district
- 31904 Phước Bình district
- 32100 Bình Long province
- 32101 An Lộc district
- 32102 Châu Thành district
- 32102 *Chơn Thành district, VC name for Châu Thành district*
- 32103 Lộc Ninh district
- 32200 Long Khánh province *(Merged by the VC in late 1966 with Bà Rịa (GVN Phước Tuy) and Biên Hòa provinces to form Bà Biên province, sometimes called Long Bà Biên province.)*
- 32201 Định Quán district
- 32202 Xuân Lộc district

- 32300 Phước Tuy province (VC Bà Rịa province, merged in late 1966 with Biên Hòa and Long Khánh provinces to form Bà Biên province, sometimes called Long Bà Biên province.)
- 32302 Cao Su district, VC name for Đức Thành district
- 32304 Châu Thành district, VC name for Long Lễ district
- 32301 Đất Đỏ district (Included in VC Long Đất district.)
- 32302 Đức Thành district (VC Cao Su district)
- 32301 Long Đất district, VC district covering Đất Đỏ and  
32302 Long Điền districts
- 32303 Long Điền district Included in VC Long Đất district.)
- 32304 Long Lễ district (VC and former GVN Châu Thành district.)
- 32305 Xuyên Mộc district
- 32400 Biên Hòa province (In late 1966 the VC merged Biên Hòa province with Bà Rịa (GVN Phước Tuy) and Long Khánh provinces to form Bà Biên province, sometimes called Long Bà Biên province.)
- 52902 Cơn Giò district, VC district included by the GVN in Gia Định province
- 32401 Công Thành district (Included in VC Thủ Dầu Một province.)
- 32402 Dĩ An district
- 32403 Đức Tu district (VC Vĩnh Cửu district covers western Đức Tu district; VC Trảng Bom district formed in October 1966 covers at least eastern Đức Tu district.)
- 32404 Long Thành district } (Merged by the VC into a single  
32405 Nhơn Trạch district } district, called Long Thành district, on 9 October 1966.)
- 52906 Quảng Xuyên district, VC district included by GVN in Gia Định province
- 32406 Tân Uyên district (Included in VC Thủ Dầu Một province; formerly in GVN and VC Phước Thành province.)
- 32403 Trảng Bom district, VC district activated in October 1966 covering at least eastern Đức Tu district
- 32403 Vĩnh Cửu district, VC name for part of Đức Tu district

- 32500 Tây Ninh province
- 32501 Bến Cầu district, VC district covering most of Khiêm Hạnh district
- 32503 Châu Thành district, VC district covering part of Phú Khương district
- 32504 Dương Minh Châu district, VC district covering Phước Ninh district
- 32503 Gò Dầu (Gò Dầu Hạ) district, VC district covering Hiếu Thiện district
- 32501 Hiếu Thiện district (VC. Gò Dầu Hạ district)
- 32502 Khiêm Hạnh district
- 32503 Phú Khương district
- 32504 Phước Ninh district
- 32503 Tòa Thánh district, VC district covering part of Phú Khương district
- 32704 Trảng Bàng district, GVN district in Hậu Nghĩa province considered by the VC in Tây Ninh province
- 32600 Bình Dương province (VC Thủ Dầu Một province, formed in Nov. 1966)
- 32601 Bến Cát district
- 32602 Châu Thành district
- 32606 Dầu Tiếng district, renamed Tri Tâm district
- 32603 Lái Thiêu district
- 32604 Phú Giáo district (Formerly in GVN and VC Phước Thanh province.)
- 32605 Phú Hòa district
- 32606 Tri Tâm district (Formerly named Dầu Tiếng district.)
- 32406 Tân Uyên district, GVN district in Biên Hòa, considered by the VC as part of Thủ Dầu Một province

32700 Hậu Nghĩa province

- 32701 Củ Chi district (VC Củ Chi district is under Gia Định province.)
- 32702 Đức Hòa district (VC Đức Hòa district is under Long An province.)
- 32703 Đức Huệ district (VC Đức Huệ district is under Long An province.)
- 32704 Trảng Bàng district (VC Trảng Bàng district is under Tây Ninh province)

32800 Long An province

- 32801 Bến Lức district
- 32801 Bến Thủ district, VC district covering Bến Lức and Thủ Thừa districts
- 32806
- 32802 Bình Phước district
- 32803 Cần Đước (Cần Đức) district
- 32807 Cần Giuộc district
- 32702 Đức Hòa district, Hậu Nghĩa province, is carried by the VC as part of Long An province
- 32703 Đức Huệ district, Hậu Nghĩa province, is carried by the VC as part of Long An province
- 32804 Tân Trụ district
- 32805 Thạnh Đức district
- 32806 Thủ Thừa district

- 43000 Kiến Tường province
- 43001 Châu Thành district
- 43002 Kiến Bình district
- 43003 Tuyên Bình district
- 43004 Tuyên Nhơn district
- 43100 Định Tường province (*Part of VC Mỹ Tho province*)
- 43101 Bến Trành district
- 43102 Châu Thành district
- 43103 Chợ Gạo district
- 43104 Giáo Đức district
- 43105 Cai Lậy district
- 43106 Long Định district
- 43107 Cái Bè district
- 43200 Gò Công province (*Part of VC Mỹ Tho province*)
- 43203 *Gò Công district, VC district covering Hòa Lạc and Hòa Tân districts*
- 43204 *Tân districts*
- 43201 Hòa Bình district (*Included in VC Hòa Đông district.*)
- 43202 Hòa Đông district
- 43203 Hòa Lạc district (*Included in VC Gò Công district.*)
- 43204 Hòa Tân district (*Included in VC Gò Công district.*)

- 43300 Kiến Hòa province (VC Bến Tre province)
- 43301 Ba Tri district
  - 43302 Bình Đại district
  - 43305 Châu Thành district, VC district including Hàm Long and  
43309 Trúc Giang districts
  - 43303 Đôn Nhơn district
  - 43304 Giồng Trôm district
  - 43305 Hàm Long district (Included in VC Châu Thành  
district.)
  - 43306 Hương Mỹ district
  - 43307 Mỏ Cày district (VC Mỏ Cày district includes Đôn Nhơn  
and parts of Hương Mỹ and Giồng Trôm districts.)
  - 43308 Thạnh Phú district
  - 43309 Trúc Giang district (Included in VC Châu Thành  
district.)
- 43400 Kiến Phong province
- 43401 Cao Lãnh district
  - 43402 Hồng Ngự district
  - 43403 Kiến Văn district (Included in VC Cao Lãnh district.)
  - 43404 Mỹ An district (Established by decree on 24 April 1964.)
  - 43405 Thanh Bình district

- 43500 Châu Đốc province (Included by the VC as part of An Giang province.)
- 43501 An Phú district
  - 43501 An Tân district, VC district covering An Phú and Tân Châu districts
  - 43503 Châu districts
  - 43504 Biên Tịnh district, VC name for Tịnh Biên district
  - 43502 Châu Phú district
  - 43503 Tân Châu district
  - 43501 Tân Châu An Phú district, variant name of VC An Tân district, covering An Phú and Tân Châu districts
  - 43503
  - 43504 Tịnh Biên district (VC Biên Tịnh district)
  - 43505 Tri Tôn district
- 43600 An Giang province (VC An Giang province includes GVN Châu Đốc province; also called Long Xuyên province.)
- 43601 Châu Thành district
  - 43602 Chợ Mới district
  - 43701 Hà Tiên district, VC district covering Hà Tiên and western Kiên Lương district, Kiên Giang province
  - 43704
  - 43603 Huệ Đức district
  - 43604 Thốt Nốt district (Included in VC Cần Thơ province.)
- 43700 Kiên Giang province (VC Rạch Gia province)
- 43702 An Biên district, VC district covering northern Kiến An district
  - 43706 Châu Thành district, VC district covering Kiến Thanh and eastern Kiên Lương districts
  - 43704
  - 43703 Giồng Riềng district, VC district approximately the same as Kiên Bình district
  - 44102 Gò Quao district, VC district approximately the same as Kiên Hưng district, Chương Thiện province

- 43701 Hà Tiên district
- 43702 *Hiếu Lê district, GVN district incorporated into Kiến An district by decree no. 459/NV on 20 March 1965*
- 43702 Kiến An district
- 43703 Kiến Bình district
- 43704 Kiến Lương district
- 43705 Kiến Tân district
- 43706 Kiên Thành district
- 43707 Phú Quốc district (Phú Quốc island)
- 43705 *Tân Hiệp district, VC name for Kiến Tân district*
- 43103 *Vĩnh Thuận district, VC district covering Kiến Long district, Chương Thiện province*
- 43800 Vĩnh Bình province (VC Trà Vinh province)
- 43801 Càng Long district
- 43802 Cầu Kè district
- 43803 Cầu Ngang district
- 43804 Châu Thành district
- 43805 *Duyên Hải district, VC name for Long Toàn district*
- 43805 Long Toàn district (VC Duyên Hải district)
- 43806 Tiểu Cần district
- 43807 Trà Cú district
- 43808 *Trà Ôn district, transferred to Vĩnh Long province in late 1966, without adjustment of area code*
- 43809 *Vũng Liêm district, transferred to Vĩnh Long province in late 1966, without adjustment of area code*

- 43900 Vinh Long province (VC Vinh Long province includes Sa Đéc province.)
- 43901 Binh Minh district (VC Binh Minh district includes the southwestern half of Đức Thành district, Sa Đéc province.)
- 43904 Cài Nhum district, VC name for Minh Đức district
- 43902 Châu Thành district
- 43903 Chợ Lách district
- 44601 Đức Thành district, transferred to Sa Đéc province on 24 September 1966
- 44602 Đức Tôn district, transferred to Sa Đéc province on 24 September 1966
- 44603 Lập Vò district, transferred to Sa Đéc province on 24 September 1966
- 43904 Minh Đức district (VC Cài Nhum district)
- 44604 Sa Đéc district, transferred to Sa Đéc province on 24 September 1966
- 43905 Tam Bình district
- 43808 Trà Ôn district (Transferred from Vĩnh Bình province in late 1966, without adjustment of area code.)
- 43902 Vinh Long district, VC district covering Châu Thành and Đức Tôn districts
- 44602
- 43809 Vũng Liêm district (Transferred from Vĩnh Bình province in late 1966, without adjustment of area code.)
- 44600 Sa Đéc province (Reestablished by decree no. 162 on 24 September 1966)
- 44601 Đức Thành district
- 44602 Đức Tôn district
- 44603 Lập Vò district
- 44604 Lê Hà district, VC district covering northern Sa Đéc district
- 44604 Sa Đéc district

- 44000 Phong Dinh province (VC Cần Thơ province)
- 44001 Châu Thành district
  - 44101 Long Mỹ district, VC district covering Long Mỹ and Đitel Long districts, Chương Thiện province
  - 44002 Ô Môn district, VC district covering part of Phong Phú district
  - 44002 Phong Phú district
  - 44003 Phụng Hiệp district
  - 44004 Thuận Nhơn district
  - 44005 Thuận Trung district
- 44100 Chương Thiện province (Divided by the VC between Cần Thơ, Rạch Gia and Sóc Trăng provinces.)
- 44101 Châu Thành district
  - 44102 Phong Phú district
  - 44103 Phụng Hiệp district
  - 44104 Thuận Nhơn district
  - 44105 Thuận Trung district
- 44200 Ba Xuyên province (Included in VC Sóc Trăng province.)
- 44206 Châu Thành district, VC name for Thuận Hòa district
  - 44201 Kế Sách district
  - 44202 Lịch Hội Thượng district (Included in VC Long Phú district.)
  - 44203 Long Phú district (VC Long Phú district includes Lịch Hội Thượng district.)
  - 44204 Mỹ Xuyên district
  - 44205 Thạnh Trị district
  - 44206 Thuận Hóa district (VC Châu Thành district)

- 44300 Bạc Liêu province (*Included in VC Sóc Trăng province.*)
- 44301 Gia Rai district
- 44301 *Hồng Dân district, VC district covering parts of Gia*  
 44302 *Rai and Phước Long districts in Bạc Liêu province*  
 44302 *and part of Kiến Thiện district in Chương Thiện*  
*province*
- 44302 Phước Long district
- 44303 Vĩnh Châu district
- 44304 Vĩnh Lợi district
- 44400 An Xuyên province (*VC Cà Mau province*)
- 44404 *Bảy Châu district, VC name for Quản Long district*
- 44401 *Cái Nước district (VC Năm Căn district)*
- 44301 *Chín Nam district, VC district falling within GVN Gia*  
*Rai district, Bạc Liêu province*
- 44402 *Đầm Dơi district*
- 44405 *Hải Duyên district, VC district covering coastal parts*  
 44406 *of Sông Ông Đốc and Thới Bình districts*
- 43702 *Mười Cư district, VC district covering approximately*  
*southern Kiến An district, Kiên Giang province*
- 44405 *Mười Tê district, VC district covering inland parts of*  
 44406 *Sông Ông Đốc and Thới Bình districts*
- 44403 Năm Căn district
- 44401 *Năm Căn district, VC district approximately the same*  
*as Cái Nước district*
- 44404 *Quản Long district*
- 44405 *Sông Ông Đốc district*
- 44406 *Thới Bình district*

44403 *Tư Khang district, VC district covering Năm Căn district*  
 44402 *and eastern Đầm Dơi district*

52900 Gia Định province

52901 Bình Chánh district

52901 *Bình Tân district, VC district covering Bình Chánh and*  
 52907 *Tân Bình districts*

52902 Cần Giuộc district *(Included in VC Biên Hòa province.)*

32701 *Củ Chi district, VC district included by the GVN in*  
*Hậu Nghĩa province*

52903 *Gò Môn district, VC district covering Gò Vấp and Hóc*  
 52904 *Môn districts*

52903 Gò Vấp district

52904 Hóc Môn district

52905 Nhà Bè district

52906 Quảng Xuyên district *(Included in VC Biên Hòa province.)*

52907 Tân Bình district

52908 Thủ Đức district

54500 Côn Sơn administrative delegation (Côn Sơn islands)

ADMINISTRATIVE DIVISIONS OF THE  
REPUBLIC OF VIET NAM

(SOUTH VIET NAM)

ALPHABETICAL LISTING

JUL 1967

B-25

**A**

- 43702 *An Biên district, VC district covering northern Kiến An district, Kiên Giang (Rạch Gia) province*
- 43600 *An Giang province (VC An Giang province also includes Châu Đốc province, code 43500. It is sometimes called Long Xuyên province.)*
- 20605 *An Lão district, VC district corresponding roughly to Hoài Nhơn district, Bình Định province*
- 32101 *An Lộc district, Bình Long province*
- 20601 *An Nhơn district, Bình Định province*
- 43501 *An Phú district, Châu Đốc province*
- 21201 *An Phước district, Ninh Thuận province (VC Đồng Hà district)*
- 43501 *An Tân district, VC district covering An Phú and Tân Châu districts,*  
43503 *Châu Đốc (VC An Giang) province*
- 20602 *An Túc district, Bình Định province (Included in VC Gia Lai province.)*
- 44400 *An Xuyên province (VC Cà Mau province)*

**B**

- 32200 Bà Biên province, VC province formed by the merger of Bà Rịa, Biên  
32300 Hòa and Long Khánh province in late 1966. It is also called Long  
32400 Bà Biên.  
10108 Ba Lòng district, Quảng Trị province  
32300 Bà Rịa province, VC name for Phước Tuy province, merged by the VC in  
late 1966 with Biên Hòa and Long Khánh provinces to form Bà Biên  
province, sometimes called Long Bà Biên province.
- 10501 Ba Tơ district, Quảng Ngãi province
- 43301 Ba Tri district, Kiến Hòa province
- 44200 Ba Xuyên province (Included in VC Sóc Trăng province.)
- 21202 Bạc Ai district, VC district covering Bửu Sơn district and most  
21203 of Dư Long district, Ninh Thuận province
- 21700 Bắc Bình province, VC name for the northern part of Bình Thuận province.
- 44300 Bạc Liêu province (Included in VC Sóc Trăng province.)
- 21104 Bắc Ninh district, VC district covering northern Ninh Hòa and  
21103 northeastern Khánh Dương districts, Khánh Hòa province
- 21705 Bắc Sơn district, VC district covering Phan Lý Cham district, Bình  
Thuận province
- 21301 Ban Mê Thuột (Banmethuot) district, Đarlac province
- 21601 Bảo Lộc district, Lâm Động province
- 44404 Bảy Châu district, VC name for Quận Long district, An Xuyên (Cà  
Mau) province
- 32601 Bến Cát district, Bình Dương province
- 32501 Bến Cầu district, VC district covering most of Khiêm Hanh district,  
Tây Ninh province
- 32801 Bến Lức district, Long An province
- 32801 Bến Thu district, VC district in Long An province covering Bến Lức  
32806 and Thủ Thừa districts
- 43101 Bến Tranh district, Định Tường province (Included by the VC in  
Châu Thành district, Mỹ Tho province.)
- 43300 Bến Tre province, VC name for Kiên Hòa province
- 32400 Biên Hòa province (In late 1966 the VC merged Biên Hòa with Bà Rịa  
(GVN Phước Tuy) and Long Khánh provinces to form Bà Biên province,  
sometimes called Long Bà Biên province.)
- 43504 Biên Tịnh district, VC name for Tịnh Biên district, Châu Đốc (VC  
An Giang) province

52901 Bình Chánh district, Gia Định province

43302 Bình Đại district, Kiến Hòa province

20600 Bình Định province

32600 Bình Dương province

20603 Bình Khê district, Bình Định province

32100 Bình Long province

43901 Bình Minh district, Vĩnh Long province (VC Bình Minh district  
(Trà Vinh province) includes the southwestern half of Đức Thành  
district, Sa Đéc province.)

32802 Bình Phước district, Long An province

10502 Bình Sơn district, Quảng Ngãi province

52901 Bình Tân district, VC district covering Bình Chánh and Tân Bình  
52907 districts, Gia Định province

21700 Bình Thuận province

31800 Bình Tuy province (Included by the VC in Bình Thuận province.)

31901 Bồ Đức district, Phước Long province

21302 Buôn Hồ district, Đarlac province

21202 Bửu Sơn district, Ninh Thuận province

C

- 44400 *Cà Mau province, VC name for An Xuyên province*
- 43102 *Cái Bè district, Định Tường province*
- 43103 *Cai Lậy district, Định Tường province*
- 43904 *Cài Nhum district, VC name for Minh Đức district, Vĩnh Long province*
- 44401 *Cái Nước district, An Xuyên (Cà Mau) province (VC Năm Căn district)*
- 21101 *Cam Lâm district, Khánh Hòa province*
- 10101 *Cam Lộ district, Quảng Trị province*
- *Cam Ranh autonomous municipality (Established July 1966 by decree no. 62)*
- 21101 *Cam Ranh district, VC district covering part of Cam Lâm district and the autonomous municipality of Cam Ranh*
- 32803 *Cần Đức district, Long An province (also Cần Đức district)*
- 52902 *Cần Giờ district, Gia Định province (Included by the VC in Biên Hòa province.)*
- 32807 *Cần Giuộc district, Long An province*
- 44000 *Cần Thơ province, VC name for Phong Định province*
- 43801 *Càng Long district, Vĩnh Bình province*
- 43401 *Cao Lãnh district, Kiến Phong province*
- 32302 *Cao Su district, VC name for Đức Thành district, Phước Tuy (Bà Rịa) province*
- 43802 *Cầu Kè district, Vĩnh Bình province*
- 43803 *Cầu Ngang district, Vĩnh Bình province*
- 43203 *Cay Lậy district, variant spelling of Cai Lậy district, Định Tường (Mỹ Tho) province*
- 43500 *Châu Đốc province (Included in VC An Giang province.)*
- 32300 *Châu Đức district, Phước Tuy (Bà Rịa) province, VC district not correlated with GVN boundaries*
- 43502 *Châu Phú district, Châu Đốc province*

43601 Châu Thành district, An Giang province

44206 *Châu Thành district, VC name for Thuận Hòa district, Ba Xuyên (Sóc Trăng) province*

32602 Châu Thành district, Bình Dương province

32102 Châu Thành district, Bình Long province

43104 Châu Thành district, Định Tường province (VC Châu Thành district, Mỹ Tho province) includes Long Định and Bến Tranh districts.)

43706 *Châu Thành district, Kiên Giang province (VC Rạch Gia province), VC*  
 43704 *district covering Kiến Thành and eastern Kiến Lương districts*

43305 *Châu Thành district, Kiến Hòa (VC Bến Tre) province, VC district*  
 43309 *covering Hâm Long and Trúc Giang districts*

43001 Châu Thành district, Kiến Tường province

44001 Châu Thành district, Phong Định province

32304 *Châu Thành district, VC name and former GVN name for Long Lễ*  
*district, Phước Tuy (Ba Rịa) province*

32404 *Châu Thành district, Tây Ninh province, VC district covering part*  
*of Phước Ninh district*

43804 Châu Thành district, Vĩnh Bình province

43902 Châu Thành district, Vĩnh Long province

20901 *Cheo Reo district, VC district in Gia Lai province covering part of*  
*Phủ Thiện district, Phú Bổn province*

44301 *Chín Nam district, VC district falling within Gia Rai district, Bạc*  
*Liêu (Cà Mau) province*

43105 Chợ Gạo district, Định Tường province

43903 Chợ Lách district, Vĩnh Long province

43602 Chợ Mới district, An Giang province

32102 *Chơn Thành district, VC name for Châu Thành district, Bình Long*  
*province*

20701 Chương Nghĩa district, Kontum province

- 44100 Chương Thiện province (Divided by the VC between Cần Thơ, Rạch  
Gia and Sóc Trăng provinces.)
- 54500 Côn Sơn administrative delegation (Côn Sơn islands)
- 32401 Công Thành district, Biên Hòa province (Included in VC Thủ Dầu  
Một province.)
- 20700 Công Tum province, variant spelling of Kontum province
- 2701 Củ Chi district, Hậu Nghĩa province (VC consider Củ Chi district  
as part of Gia Định province.)

**D**

- Đà Lạt autonomous municipality
- Đà Nẵng autonomous municipality
- 21300 *Đắc Lắc province, variant spelling of Đaklak, VC name for Đarlac province*
- 21303 *Đắc Song district, VC district covering Lạc Thiện and Phước An*
- 21304 *districts, Đarlac (Đaklak) province*
- 10301 *Đại Lộc district, Quảng Nam province (VC Quảng Đà province)*
- 21300 *Đaklak province, VC name for Đarlac province*
- 20702 *Đak-Sut (Đắc Sút) district, Kontum province*
- 20703 *Đak-To (Đắc Tô) district, Kontum province*
- 44402 *Đám Dơi district, An Xuyên province*
- 21300 *Đarlac province (VC Đaklac or Đắc Lắc province, which includes most of GVN Phú Bôn province. The VC districts are also numbered H1-H9; H1-H7 are under B-3, H8-H9 under B-5.)*
- 32301 *Đất Đỏ district, Phước Tuy (Ba Rịa) province*
- 32606 *Dầu Tiếng district, renamed Tri Tâm district, Bình Dương province*
- 32402 *Dĩ An district, Biên Hòa province*
- 21602 *Di Linh district, Lâm Đồng province*
- 10302 *Điện Bàn district, Quảng Nam province (VC Điện Bàn district, Quảng Đà province, includes Hiếu Nhơn district.)*
- 21102 *Diên Khánh district, Khánh Hòa province*
- 32201 *Định Quán district, Long Khánh province*
- 43100 *Định Tường province (Included in VC Mỹ Tho province.)*
- 21501 *Đôn Dương district, Tuyên Đức province*
- 31902 *Đôn Luân district, Phước Long province*
- 43303 *Đôn Nhơn district, Kiến Hòa province*

- 21201 *Đông Hà district, VC name for An Phước district, Ninh Thuận province*
- 21701 *Đông Hải district, VC name for Hải Long district, Bình Thuận province*
- 21704 *Đông Lâm district, VC district covering Hòa Đa and coastal Tuy*  
21707 *Phong districts, Bình Thuận province*
- 21001 *Đông Xuân district, Phú Yên province*
- 21203 *Dũ Long district, Ninh Thuận province*
- 10303 *Đức Dục district, Quảng Nam province (VC Quảng Đà province. Đức Dục is divided by the VC among Đại Lộc, Duy Xuyên and Quế Sơn districts.)*
- 32702 *Đức Hòa district, Hậu Nghĩa province (VC Đức Hòa district is under Long An province.)*
- 32703 *Đức Huệ district, Hậu Nghĩa province (VC Đức Huệ district is under Long An province.)*
- 21401 *Đức Lập district, Quảng Đức province (Formerly Đức Sơn district)*
- 44101 *Đức Long district, Chương Thiện province*
- 10503 *Đức Phổ district, Quảng Ngãi province*
- 31903 *Đức Phong district, Phước Long province*
- 21401 *Đức Sơn district, old name for Đức Lập district, Quảng Đức province*
- 32302 *Đức Thành district, Phước Tuy province*
- 44601 *Đức Thành district, Sa Đéc province (Moved from Vĩnh Long to Sa Đéc province 24 September 1966.)*
- 44602 *Đức Tôn district, Sa Đéc province (Moved from Vĩnh Long to Sa Đéc province 24 September 1966.)*
- 21502 *Đức Trọng district, Tuyên Đức province (Considered by the VC as part of Quảng Đức province.)*
- 32403 *Đức Tú district, Biên Hòa province (VC Vĩnh Cửu district.)*
- 32504 *Dương Minh Châu district, VC district covering Phước Ninh district, Tây Ninh province*
- 10304 *Duy Xuyên district, Quảng Nam province (VC Quảng Đà province.)*
- 43805 *Duyên Hải district, VC name for Long Toàn district, Vĩnh Bình (Trà Vinh) province*

## G

- 52900 Gia Dinh province
- 20800 Gia Lai province, VC name for Pleiku province
- 44301 Gia Rai district, Bạc Liêu province
- 10501 Gia Vut district, Quảng Ngãi province, VC district covering half of Ba Tư district, probably created in early 1967
- 43106 Giáo Đức district, Định Tường province
- 10102 Gio Linh district, Quảng Trị province
- 43703 Giồng Riềng district, VC district approximately the same as Kiến Bình district, Kiên Giang (Rạch Gia) province
- 43304 Giồng Trôm district, Kiến Hòa province
- 43203 Gò Công district (Mỹ Tho province), VC district covering Hòa Lạc and Hòa Tân districts, Gò Công (Mỹ Tho) province
- 43204
- 43200 Gò Công province (Included in VC Mỹ Tho province)
- 32503 Gò Dầu (Gò Dầu Hạ) district, VC district covering Hiếu Thiện district, Tây Ninh province
- 32501
- 52903 Gò Môn district, VC district corresponding to Gò Vấp and Hóc Môn districts, Gia Định province
- 52904
- 44102 Gò Quao district, VC district approximately the same as Kiến Hưng district, Chương Thiện (Rạch Gia) province
- 52903 Gò Vấp district, Gia Định province (Included in VC Gò Môn district.)

H

- 43701 Hà Tiên district, Kiên Giang province (VC Hà Tiên district covers Hà Tiên and western Kiên Lương districts.)
- 44405 Hải Duyên district, VC district covering coastal parts of Sông Ông  
44406 Đốc and Thời Bình districts, An Xuyên (Cà Mau) province
- 10103 Hải Lang district, Quảng Trị province
- 21701 Hải Long district, Bình Thuận province
- 21702 Hải Ninh district, Bình Thuận province
- 43305 Hàm Long district, Kiến Hòa province (Included in VC Châu Thành district.)
- 31801 Hàm Tân district, Bình Tuy province
- 21703 Hàm Thuận district, Bình Thuận province (VC Hàm Thuận district includes most of Thiện Giáo district and enclaves from Phan Lý Cham district.)
- 10401 Hậu Đức district, Quảng Tín province (VC Trà My 2 district, Quảng Nam province.)
- 32700 Hậu Nghĩa province (Divided by the VC between Tây Ninh, Gia Định and Long An provinces.)
- 10402 Hiệp Đức district, Quảng Tín province (VC Quảng Nam province)
- 10305 Hiếu Đức district, Quảng Nam province (VC Quảng Đà province)
- 43702 Hiếu Lê district, incorporated into Kiến An district by decree no. 459/NV on 20 March 1965
- 32401 Hiếu Liêm district, former GVN district, Phước Thanh province,  
32201 incorporated into Công Thành and Định Quán districts
- 10306 Hiếu Nhơn district, Quảng Nam province (Included in VC Điện Bàn district, Quảng Đà province.)
- 32501 Hiếu Thiện district, Tây Ninh province (VC Gò Dầu Hạ district)
- 21002 Hiếu Xương district, Phú Yên province

43201 Hòa Bình district, Gò Công province (Included in VC Hòa Đông district, Mỹ Tho province.)

21704 Hòa Đa district, Bình Thuận province

43202 Hòa Đông district, Gò Công province (VC Hòa Đông district includes Hòa Bình district.)

43203 Hòa Lạc district, Gò Công province (Included in VC Gò Công district, Mỹ Tho province.)

43204 Hòa Tân district, Gò Công province (Included in VC Gò Công district, Mỹ Tho province.)

10307 Hòa Vang district, Quảng Nam province (VC Quảng Đà province)

20604 Hoài Ân district, Bình Định province

31802 Hoài Đức district, Bình Tuy province (Reestablished 30 Sept. 1965)

20605 Hoài Nhơn district, Bình Định province (VC Hoài Nhơn district covers only the eastern part of the GVN district.)

52904 Hốc Môn district, Gia Định province

44301 Hồng Đan district, VC district covering parts of Gia Rai and Phước  
 44302 Long districts in Bạc Liêu province and part of Kiến Thiện  
 44104 district in Chương Thiện province

43402 Hồng Ngự district, Kiến Phong province

----- Huệ autonomous municipality

43603 Huệ Đức district, An Giang province

10201 Hương Điền district, Thừa Thiên province

10104 Hương Hóa district, Quảng Trị province (VC Hương Hóa district includes Trung Lương district.)

43306 Hương Mỹ district, Kiến Hòa province

10202 Hương Thủy district, Thừa Thiên province

10203 Hương Trà district, Thừa Thiên province

10104 Hy Lập district, VC district in the southern part of Hương Hóa district, Quảng Trị province

K

44201 Kê Sách district, Ba Xuyên province

21103 Khánh Dương district, Khánh Hòa province

21100 Khánh Hòa province

21102 *Khánh Sơn district, VC district within Diên Khánh district, Khánh Hòa province*

21402 Khiêm Đức district, Quảng Đức province

32502 Khiêm Hạnh district, Tây Ninh province

43702 Kiến An district, Kiên Giang province

43002 Kiến Bình district, Kiến Tường province

43703 Kiến Bình district, Kiên Giang province

21403 Kiến Đức district, Quảng Đức province

43700 Kiên Giang province (*VC Rạch Gia province*)

43300 Kiến Hòa province (*VC Bến Tre province*)

44102 Kiến Hưng district, Chương Thiện province

44103 Kiến Long district, Chương Thiện province

43704 Kiến Lương district, Kiên Giang province

43400 Kiến Phong province

43705 Kiến Tân district, Kiên Giang province

43706 Kiến Thành district, Kiên Giang province

44104 Kiến Thiện district, Chương Thiện province

43000 Kiến Tường province

43403 Kiến Văn district, Kiến Phong province (*Included in VC Cao Lãnh district.*)

20700 Kontum (Kon-Tum) province

20704 Kontum (Kon-Tum) district, Kontum province

## L

- 21503 Lạc Dương district, Tuyên Đức province
- 21303 Lạc Thiện district, Đarlac province
- 32603 Lái Thiêu district, Bình Dương province
- 21600 Lâm Đồng province
- 44603 Lập Vò district, Sa Đéc province (*Transferred from Vĩnh Long to Sa Đéc province 24 September 1966.*)
- 44604 Lê Hà district, VC district covering northern Sa Đéc district, Sa Đéc province
- 20801 Lê Thanh district, Pleiku province
- 20802 Lê Trung district, Pleiku province
- 44202 Lịch Hội Thượng district, Ba Xuyên (Sóc Trang) province  
(*Included in VC Long Phú district.*)
- 32103 Lộc Ninh district, Bình Long province
- 32800 Long An province
- 32200 Long Bà Biên province, variant name of VC Bà Biên province, formed  
32300 in late 1966 by the merger of Long Khánh, Bà Rịa (GVN Phước Tuy)  
32400 and Biên Hòa provinces
- 32301 Long Đất district, VC district covering Đất Đỏ and Long Điền  
32302 districts, Phước Tuy (Ba Rịa) province
- 32303 Long Điền district, Phước Tuy province
- 43107 Long Định district, Định Tường province (*Included in VC Châu Thành district, Mỹ Tho province.*)
- 32200 Long Khánh province (*VC Long Khánh province was merged in late 1966 with Biên Hòa and Bà Rịa (GVN Phước Tuy) provinces to form Bà Biên province, sometimes called Long Bà Biên province.*)
- 32304 Long Lễ district, Phước Tuy (Ba Rịa) province (*VC and former GVN Châu Thành district*)
- 44105 Long Mỹ district, Chương Thiện province
- 44203 Long Phú district, Ba Xuyên (Sóc Trang) province (*VC Long Phú district includes Lịch Hội Thượng district.*)

- 32404 Long Thành district, Biên Hòa province (VC Nhon Trạch district was incorporated into Long Thành district on 9 October 1966.)
- 43805 Long Toàn district, Vĩnh Bình province (VC Duyên Hải district)
- 43600 Long Xuyên province, variant name for An Giang province
- 10403 Lý Tín district, Quảng Tín province (VC Tam Kỳ Nam district)

M

- 10105 Mai Linh district, Quảng Trị province (Created by decree 880 on 11 June 1965.)
- 21003 Miền Tây district, VC district corresponding to Phú Hòa district  
21004 and the western parts of Sơn Hòa and Hiếu Xương districts  
21002
- 43904 Minh Đức district, Vĩnh Long province
- 10504 Minh Long district, Quảng Ngãi province
- 43307 Mộ Cày district, Kiến Hòa province (VC Mộ Cày district includes Đôn Nhơn and parts of Hương Mỹ and Giồng Trôm districts.)
- 10505 Mộ Đức district, Quảng Ngãi province
- 10104 Mông Cổ district, VC district in the southern part of Hương Hóa district, Quảng Trị province
- 43702 Mười Cự district, Cà Mau province, VC district approximately covering southern Kiến An district, Kiên Giang province
- 44405 Mười Tề district, VC district covering inland parts of Sông Ông Đốc  
44406 and Thới Bình districts, An Xuyên (Cà Mau) province
- 43404 Mỹ An district, Kiến Phong province (Created by decree 480/BNV/NC on 24 April 1964.)
- 43100 Mỹ Tho province, VC province corresponding to Định Tường and Gò  
4 3200 Công provinces
- 44204 Mỹ Xuyên district, Ba Xuyên province

N

- 44403 Nam Căn district, An Xuyên (Cà Mau) province
- 44401 *Nam Cưng district, VC name for Cái Nước district An Xuyên province*
- 10204 Nam Hòa district, Thừa Thiên province (*Nam Hòa is divided into three areas [vùng] by the VC, designated A, B and C.*)
- 21104 *Nam Ninh district, VC district covering southern Ninh Hòa district, Khánh Hòa province*
- 10506 Nghĩa Hạng district, Quảng Ngãi province
- 52905 Nhà Bè district, Gia Định province
- 32405 Nhon Trạch district, Biên Hòa province (*VC Nhon Trạch district was merged with Long Thành district on 9 October 1966, with the new district retaining the name Long Thành, in the new Bà Biên province.*)
- 21104 Ninh Hòa district, Khánh Hòa province
- 21200 Ninh Thuận province

44002    *Ở Môn district, VC district covering part of Phong Phú district,  
Phong Định province*

P

- 21705 Phan Lý Cham district, Bình Thuận province (*Parts of this district are enclaves wholly within Thiên Giáo and Hòa Đa districts.*)
- 21703 Phan Thiết district, VC district covering parts of Hàm Thuận and  
21706 Thiên Giáo districts adjacent to Phan Thiết city
- 10205 Phong Điền district, Thừa Thiên province
- 44000 Phong Định province (*VC Cần Thơ province*)
- 44002 Phong Phú district, Phong Định province
- 20900 Phú Bôn province (*Included by the VC under Daklak and Kontum provinces.*)
- 20606 Phù Cát district, Bình Định province
- 21003 Phú Đức district, Phú Yên province
- 32604 Phú Giáo district, Bình Dương province (*Formerly in GVN and VC Phước Thành province.*)
- 32605 Phú Hòa district, Bình Dương province
- 32503 Phú Khương district, Tây Ninh province
- 10206 Phú Lộc district, Thừa Thiên province
- 20607 Phù Mỹ district, Bình Định province
- 20803 Phú Nhơn district, Pleiku province
- 43707 Phú Quốc district (Phú Quốc island), Kiên Giang province (*VC Rạch Gia province*)
- 20901 Phú Thiện district, Phú Bôn province
- 10207 Phú Thụ district, Thừa Thiên province (*Included in VC Phú Vang district.*)
- 20902 Phú Túc district, Phú Bôn province
- 10208 Phú Vang district, Thừa Thiên province (*VC Phú Vang district includes Phú Thụ and Vĩnh Lộc districts.*)
- 21000 Phú Yên province

- 44003 Phụng Hiệp district, Phong Định province
- 21304 Phước An district, Đarlac province
- 31904 Phước Bình district, Phước Long province
- 31900 Phước Long province (VC also use the name Tiến Giang province for Phước Long province.)
- 44302 Phước Long district, Bạc Liêu province
- 32504 Phước Ninh district, Tây Ninh province
- 10402 Phước Sơn district, VC district covering northern Hiệp Đức district, Quảng Tín province (VC Quảng Nam province)
- Phước Thanh province, former GVN and VC province. The GVN incorporated it into adjacent Bình Long, Phước Long, Bình Dương, Biên Hòa and Long Khánh provinces; the VC incorporated it into Thủ Dầu Một province in November 1966.
- 32300 Phước Tuy province (VC Ba Rịa province)
- 20800 Pleiku (Pơ Lây Cu) province (VC Gia Lai province)
- 20800 Pơ Lây Cu province, variant spelling of Pleiku province

Q

- 44404 *Quản Long district, An Xuyên (Cà Mau) province (VC Bảy Châu district)*
- 10300 *Quảng Đà province, VC name for Quảng Nam province*
- 10209 *Quảng Điền district, Thừa Thiên province*
- 21400 *Quảng Đức province*
- 10300 *Quảng Nam province (VC Quảng Đà province; VC Quảng Nam province corresponds to GVN Quảng Tín province.)*
- 10500 *Quảng Ngãi province*
- 10400 *Quảng Tín province (VC Quảng Nam province)*
- 10100 *Quảng Trị province*
- 52906 *Quảng Xuyên district, Gia Định province (Included in VC Biên Hòa province.)*
- 10308 *Quế Sơn district, Quảng Nam province (VC Quảng Đà province)*

R

- 43700 *Rạch Gia province, VC name for Kiên Giang province*
- 52902 *Rừng Sắt special zone, a GVN designation for the area covered by*  
52906 *Quảng Xuyên and Cần Giờ districts, Gia Định province. The Việt Cộng activated a Rừng Sắt special zone on 15 April 1966, but it was not effectively manned until 1 June 1966.*

S

- 44604 Sa Đéc district, Sa Đéc province (Moved from Vĩnh Long to Sa Đéc province 24 September 1966.)
- 44600 Sa Đéc province (Reestablished 24 September 1966.)
- Sài Gòn prefecture
- 44200 Sóc Trăng province, VC province corresponding to Bạc Liêu and Ba  
44300 Xuyên provinces
- 10507 Sơn Hà district, Quảng Ngãi province (The VC consider western  
Sơn Hà to be part of Kontum province.)
- 21004 Sơn Hòa district, Phú Yên province
- 10508 Sơn Tịnh district, Quảng Ngãi province
- 21005 Sông Cầu district, Phú Yên province
- 44405 Sông Ông Đốc district, An Xuyên province

T

- 43905 Tam Bình district, Vĩnh Long province
- 10404 Tam Kỳ district, Quang Tín province (VC Tam Kỳ Bắc district, Quảng Nam province)
- 10403 Tam Kỳ Nam district, VC name for Lý Tín district, Quảng Tín province (VC Quảng Nam province)
- 52907 Tân Bình district, Gia Định province
- 43503 Tân Châu district, Châu Đốc province
- 43501 Tân Châu An Phú district, variant name of VC An Tân district,  
43503 VC An Giang province, covering An Phú and Tân Châu districts, of GVN Châu Đốc province
- 43705 Tân Hiệp district, VC name for Kiên Tân district, Kiên Giang (Rạch Gia) province
- 32804 Tân Trụ district, Long An province
- 32406 Tân Uyên district, Biên Hòa province (Included by the VC in Thủ Dầu Một province; formerly in GVN and VC Phước Thành province.)
- 31803 Tánh Linh district, Bình Tuy province
- 32500 Tây Ninh province
- 10405 Thang Bình district, Quảng Tín province (VC Quảng Nam province)
- 43405 Thạnh Bình district, Kiến Phong province
- 32805 Thanh Đức district, Long An province
- 21204 Thanh Hải district, Ninh Thuận province
- 43308 Thạnh Phú district, Kiến Hòa province
- 44205 Thạnh Trị district, Ba Xuyên province
- 21706 Thiện Giáo district, Bình Thuận province
- 44406 Thới Bình district, An Xuyên province
- 43604 Thốt Nốt district, An Giang province (Included in VC Cần Thơ province.)
- 32600 Thủ Dầu Một province, VC province corresponding to parts of Bình Dương, Biên Hòa and Long Khánh provinces; created in Nov. 1966.
- 52908 Thủ Đức district, Gia Định province

FEB 1968

B-47

32806 Thủ Thừa district, Long An province

10200 Thừa Thiên province

21202 *Thuận Bắc district, VC district covering northern Thanh Hải and*  
 21204 *part of Bửu Sơn districts, Ninh Thuận province*

44206 Thuận Hóa district, Ba Xuyên province (VC Châu Thành district)

20903 Thuận Mãn district, Phú Bổn province

21204 *Thuận Nam district, VC district covering Thanh Hải and adjacent*  
 21201 *An Phước districts, Ninh Thuận province*

44004 Thuận Nhơn district, Phong Dinh province

21704 *Thuận Phong district, VC district probably covering Hoa Đa*  
*district, Bình Thuận province*

44005 Thuận Trung district, Phong Dinh province

10309 Thuong Đức district, Quảng Nam province (VC Quang Đà province)

31900 *Tiến Giang province, VC cover name for Phước Long province*

10406 Tiến Phước district, Quảng Tín province (VC Quảng Nam province)

43806 Tiến Cần district, Vĩnh Bình province

43504 Tịnh Biên district, Châu Đốc province (VC Biên Tịnh district,  
*An Giang province*)

32503 *Tòa Thánh district, VC district covering part of Phú Khương*  
*district, Tây Ninh province*

20705 Tou Morong (Tu Mơ Rông) district, Kontum province

10509 Trà Bông district, Quảng Ngãi province

43807 Trà Cú district, Vĩnh Bình province

10402 *Trà Mỹ 1 district, VC district covering southern part of Hiệp Đức*  
*district, Quảng Tín province (VC Quảng Nam province)*

10401 *Trà Mỹ 2 district, VC name for Hậu Đức district, Quảng Tín*  
*province (VC Quảng Nam province)*

43808 Trà Ôn district, Vĩnh Long province (Transferred from Vĩnh  
*Bình province in late 1966; area code not adjusted.*

43800 Trà Vinh province, VC name for Vĩnh Bình province

- 32704 Trảng Bàng district, Hậu Nghĩa province. (VC consider Trảng Bàng district as part of Tây Ninh province.)
- 32403 Trảng Bom district, Bà Biên province, VC district formed in October 1966 covering at least eastern Đức Tú district
- 32606 Tri Tâm district, Bình Dương province (Formerly Dầu Tiếng district)
- 43505 Tri Tôn district, Châu Đốc province
- 10106 Triệu Phong district, Quảng Trị province
- 43309 Trúc Giang district, Kiến Hòa province (Included in VC Châu Thành district.)
- 10107 Trung Lương district, Quảng Trị province (Included in VC Hương Hóa district.)
- 44403 Tư Khang district, VC district covering Nam Căn and eastern Đám Dơi  
44402 districts, An Xuyên (Cà Mau) province
- 10510 Tư Nghĩa district, Quảng Ngãi province
- 20705 Tu Mơ Rông district, variant spelling of Tou Morong district, Kontum Province
- 21006 Tuy An district, Phú Yên province
- 21007 Tuy Hòa district, Phú Yên province (VC Tuy Hòa 2 district corresponds to GVN Tuy Hòa district; Tuy Hòa 1 district covers eastern Hiêu Xương district, code 21001.)
- 21707 Tuy Phong district, Bình Thuận province
- 20608 Tuy Phước district, Bình Định province (VC Tuy Phước district covers only the eastern part of the GVN district.)
- 43003 Tuyên Bình district, Kiến Tường province
- 21500 Tuyên Đức province (Tuyen Đức is divided by the VC into three areas [vùng] lettered A, B and C.)
- 43004 Tuyên Nhơn district, Kiến Tường province

V

- 21105 Vạn Ninh district, Khánh Hòa province
- 20608 *Vân Canh district, VC district corresponding roughly to western Tuy Phước district, Bình Định province*
- 43800 Vĩnh Bình province (VC Trà Vinh province)
- 44303 Vĩnh Châu district, Bạc Liêu province
- 32403 *Vĩnh Cửu district, VC name for Đức Tú district, Biên Hòa province*
- 21102 *Vĩnh Khánh district, VC district within Diên Khánh district, Khánh Hòa province*
- 6000 *Vĩnh Linh district, Quang Trị province, variant name for Vĩnh Linh region, North Việt Nam*
- 10210 Vĩnh Lộc district, Thừa Thiên province (Included in VC Phú Vang district.)
- 44304 Vĩnh Lợi district, Bạc Liêu province
- 43902 *Vĩnh Long district, VC district covering Châu Thành and Đức Tôn districts, Vĩnh Long and Sa Đéc provinces*
- 44602
- 43900 Vĩnh Long province (VC Vĩnh Long province corresponds to Vĩnh Long and Sa Đéc provinces.)
- 21101 *Vĩnh Sơn district, VC district covering most of Cam Lâm district, Khánh Hòa province*
- 20603 *Vĩnh Thạnh district, VC district corresponding roughly to northern Bình Khê district*
- 43103 *Vĩnh Thuận district, VC district covering Kiến Long district, Chương Thiện (Rạch Gia) province*
- 21106 Vĩnh Xương district, Khánh Hòa province
- 43809 *Vũng Liêm district, Vĩnh Long province (Transferred from Vĩnh Bình province in late 1966; area code not adjusted.)*
- Vũng Tàu autonomous municipality

X

- 32202 Xuân Lộc district, Long Khánh province
- 32305 *Xuyên Mộc district, Phước Tuy province (VC Ba Rịa province)*

ADMINISTRATIVE DIVISIONS OF THE  
DEMOCRATIC REPUBLIC OF VIET NAM

(NORTH VIET NAM)

GEOGRAPHICAL LISTING

JUL 1967

B-51

ADMINISTRATIVE DIVISIONS OF THE  
DEMOCRATIC REPUBLIC OF VIỆT NAM

Three different types of administrative divisions are used at an equal level in the Democratic Republic of Việt Nam (North Việt Nam):

Autonomous municipality (*Thành phố trực thuộc trung ương*)

Province (*Tỉnh*)

Region (*Khu vực*)

There are two municipalities and only one region. In two cases several provinces have been grouped into autonomous regions (*khu tự trị*). Each of these, except the Vinh Linh region, may be divided into wards (*khu*), cities (*thị xã*) and districts (*huyện*). Of these smaller divisions, only the districts (*huyện*) are listed here.

In the geographical listing the provinces have been arranged from south to north, with the Tây Bắc and Việt Bắc autonomous regions at the end.

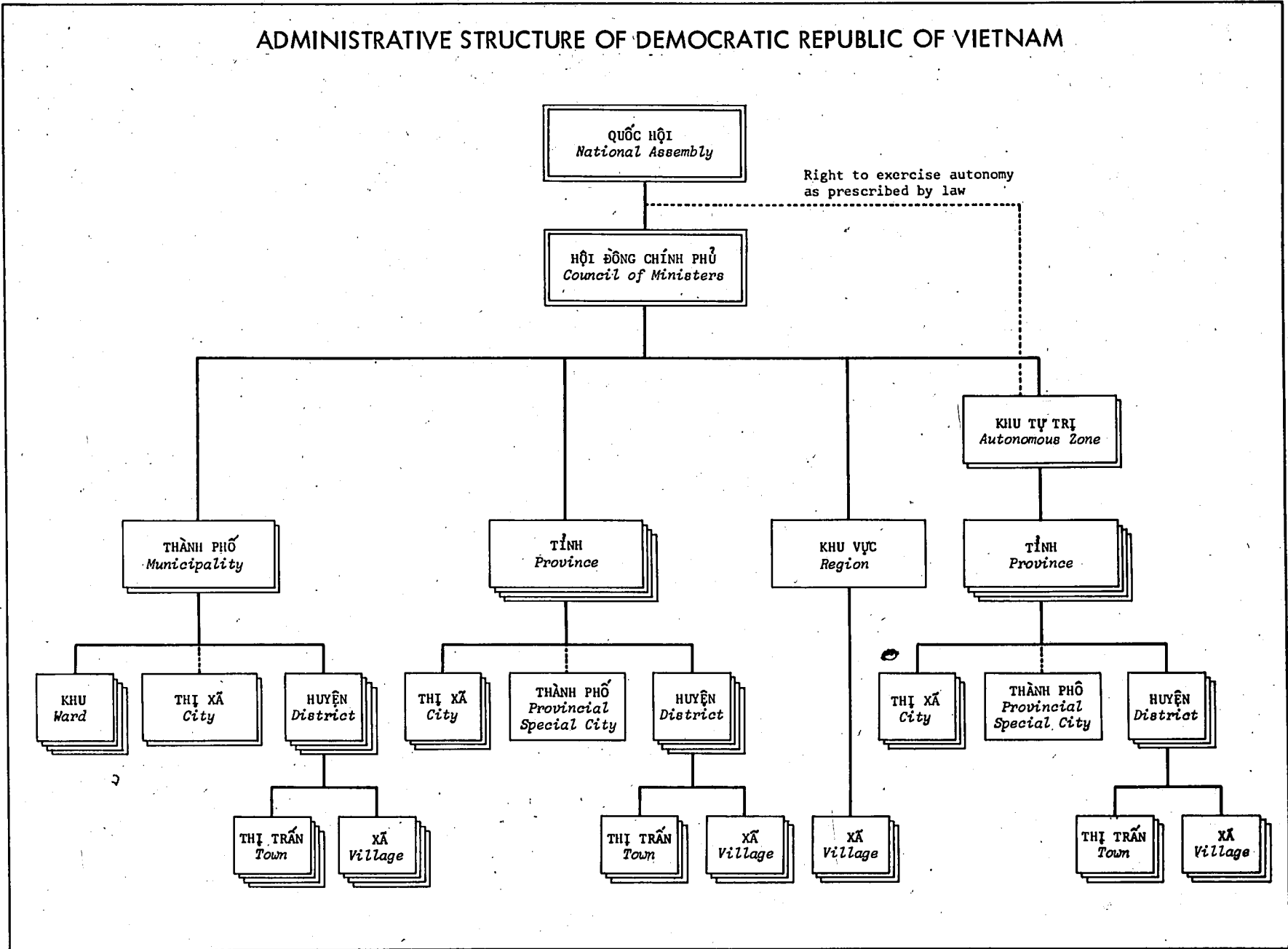
The numerical area codes given for each administrative division is composed of a two digit number for the province, region or autonomous municipality, followed by two digits for the district. The province numbers begin with 60 to avoid confusion with the numbers assigned to the provinces of the Republic of Việt Nam.

The Chinese characters for the Vietnamese place names have been included in the geographical listing.

JUL 1967

B-53

# ADMINISTRATIVE STRUCTURE OF DEMOCRATIC REPUBLIC OF VIETNAM



6000	Vĩnh Linh region	永寧
6100	Quảng Bình province	廣平
6101	Bố Trạch district	布澤
6102	Lệ Thủy district	麗水
6103	Minh Hóa district	明化
6104	Quảng Ninh district	廣寧
6105	Quảng Trạch district	廣澤
6106	Tuyên Hóa district	宣化
6200	Hà Tĩnh province	河靜
6201	Cẩm Xuyên district	錦春
6202	Can Lộc district	干祿
6203	Đức Thọ district	德壽
6204	Hương Khê district	香溪
6205	Hương Sơn district	香山
6206	Kỳ Anh district	棋安
6207	Nghi Xuân district	儀春
6208	Thạch Hà district	石河

6300	Nghệ An province	藝安
6301	Anh Sơn district	櫻山
6302	Con Cuông district	岡薑
6303	Diễn Châu district	演州
6304	Đô Lương district	都良
6305	Hưng Nguyên district	興源
6306	Kỳ Sơn district	棋山
6307	Nam Đàn district	南壇
6308	Nghi Lộc district	儀祿
6309	Nghĩa Đàn district	義壇
6310	Quế Phong district	桂封
6311	Quỳ Châu district	葵州
6312	Quỳ Hợp district	葵合
6313	Quỳnh Lưu district	瓊樓
6314	Tân Kỳ district	新棋
6315	Thanh Chương district	清彰
6316	Tương Dương district	襄陽
6317	Yên Thành district	安成

6400	Thanh Hóa province	清和
6401	Bá Thước district	霸鐮
6402	Cẩm Thủy district	錦水
6403	Đông Sơn district	東山
6404	Hà Trung district	河忠
6405	Hậu Lộc district	后祿
6406	Hoàng Hóa district	弘化
6407	Lang Chánh district	琅正
6408	Nga Sơn district	峨山
6409	Ngọc Lạc district	玉洛
6410	Như Xuân district	如春
6411	Nông Cống district	農貢
6412	Quan Hóa district	冠化
6413	Quảng Xương district	廣昌
6414	Thạch Thành district	石城
6415	Thiệu Hóa district	紹化
6416	Thọ Xuân district	壽春
6417	Thường Xuân district	長春
6418	Tĩnh Gia district	靜嘉
6419	Triệu Sơn district	肇山
6420	Vĩnh Lộc district	永祿
6421	Yên Định district	燕定

6500	Ninh Bình province	寧平
6501	Gia Khánh district	嘉慶
6502	Gia Viễn district	嘉遠
6503	Kim Sơn district	金山
6504	Nho Quan district	儒關
6505	Yên Khánh district	燕慶
6506	Yên Mô district	燕撫

6600 Nam Hà province 南河

*Formed from the merger of Hà Nam and Nam Định provinces.  
Districts marked with an a were in Hà Nam province, those  
marked with a b were in Nam Định province.*

6601	Bình Lục district	(a)	平祿
6602	Duy Tiên district	(a)	維仙
6603	Giao Thủy district	(b)	蛟水
6604	Hải Hậu district	(b)	海后
6605	Kim Bảng district	(a)	金榜
6606	Lý Nhân district	(a)	理仁
6607	Mỹ Lộc district	(b)	美祿
6608	Nam Trực district	(b)	南籍
6609	Nghĩa Hưng district	(b)	義興
6610	Thanh Liêm district	(a)	清臺
6611	Trực Ninh district	(b)	籍寧
6612	Vụ Bản district	(b)	霧本
6613	Xuân Trường district	(b)	春長
6614	Ý Yên district	(b)	意燕

6700	Thái Bình province	太平
6701	Đông Quan district	東關
6702	Duyên Hà district	緣河
6703	Hưng Nhân district	興仁
6704	Kiến Xương district	建昌
6705	Phụ Dực district	輔翼
6706	Quỳnh Côi district	瓊叢
6707	Thái Ninh district	太寧
6708	Thư Tri district	舒輜
6709	Thụy Anh district	瑞英
6710	Tiền Hải district	前海
6711	Tiên Hưng district	先興
6712	Vũ Tiên district	宇仙
6800	Hải Phòng (Autonomous municipality)	海防
6801	An Dương district	安楊
6802	An Lão district	安老
6803	Cát Bà district	葛巴
6804	Cát Hải district	葛海
6805	Hải An district	海安
6806	Kiến Thụy district	建陞
6807	Thủy Nguyên district	水源
6808	Tiên Lãng district	仙浪
6809	Vĩnh Bảo district	永保